

# Attachment 2, Part 1, Austin/Tonopah Ranger District

**Toquima Range, NV**, Humboldt Toiyabe National Forest; Slides 2-20; Impacts of cattle grazing; Photos from 2008 to 2021. Connie Millar

**Slides show conditions in: Meadow Creek Canyon; South Fork of the South Fork Pine Creek; South Fork Pine Creek; North Fork Pine Creek; Pasco Canyon; Bucks Canyon Moores Canyon, and Mt Jefferson Alpine Plateau (tablelands > 11,000').**

Alta Toquima Wilderness; Mt Jefferson Research Natural Area

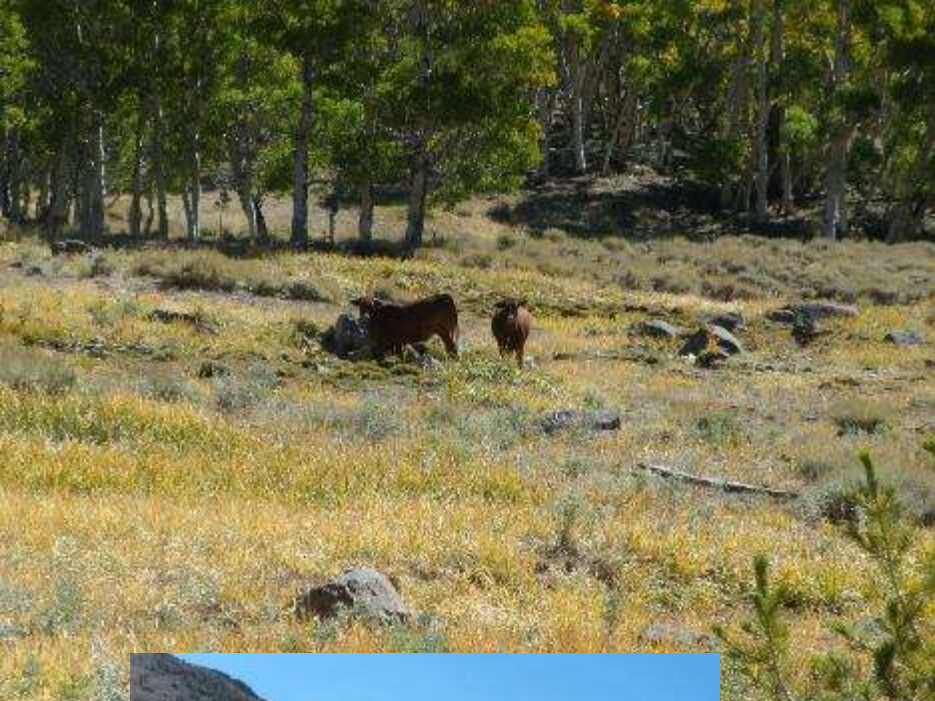
From the USFS Humboldt Toiyabe National Forest website (accessed 072519):

*“The Atla [sic] Toquima Wilderness contains one of the most beautiful destinations in Central Nevada, Pine Creek. Backpackers and stock users alike can enjoy thick groves of aspen and lush riparian areas along the trail at lower elevations and above 9,000 feet...Encompassing the highest points of this range is the Mount Jefferson [Research Natural Area](#) (RNA: Forest lands that are permanently protected as baseline areas). The Mount Jefferson Research Natural Area is one of the countries most unique environments due to its extreme conditions.”*

The following pictures portray the actual conditions on the ground of the Alta Toquima Wilderness and Mt Jefferson Research Natural Area as a result of cattle grazing – rendering the website text a fantasy of what actually exists.



























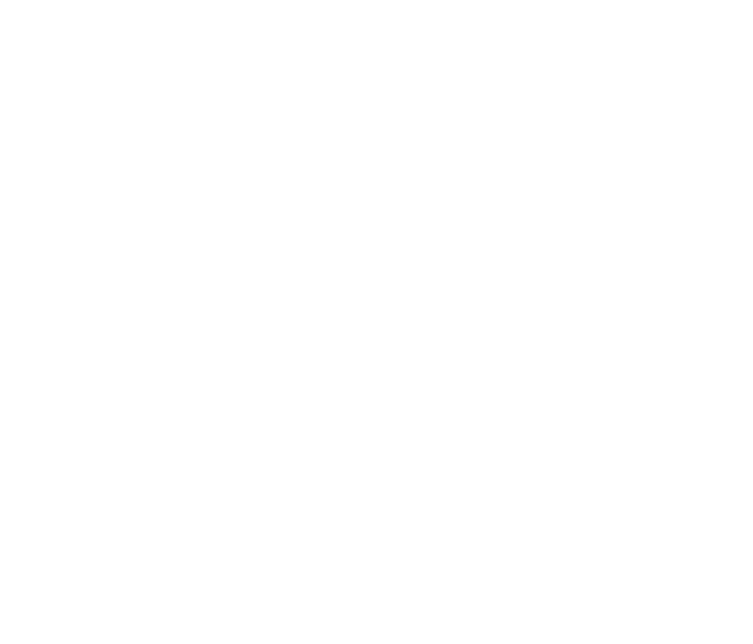
















Context view of Toquima Plateau (> 11,000') with Barker Creek headwaters (green wet meadows); Alta Toquima Ancient Archeological site directly adjacent. Cattle in next slides are in the wetlands of this alpine zone, and also graze the alpine shrublands of the whole plateau







# **Attachment 2, Part 2**

## **Austin/Tonopah Ranger District, HTNF**

### **Monitor Range, NV**

Slides 2-12; Impacts of cattle grazing; Photos from 2015.  
Connie Millar

**Slides show conditions in Clear Creek and Greenmonster  
Canyons**

Table Mountain Wilderness

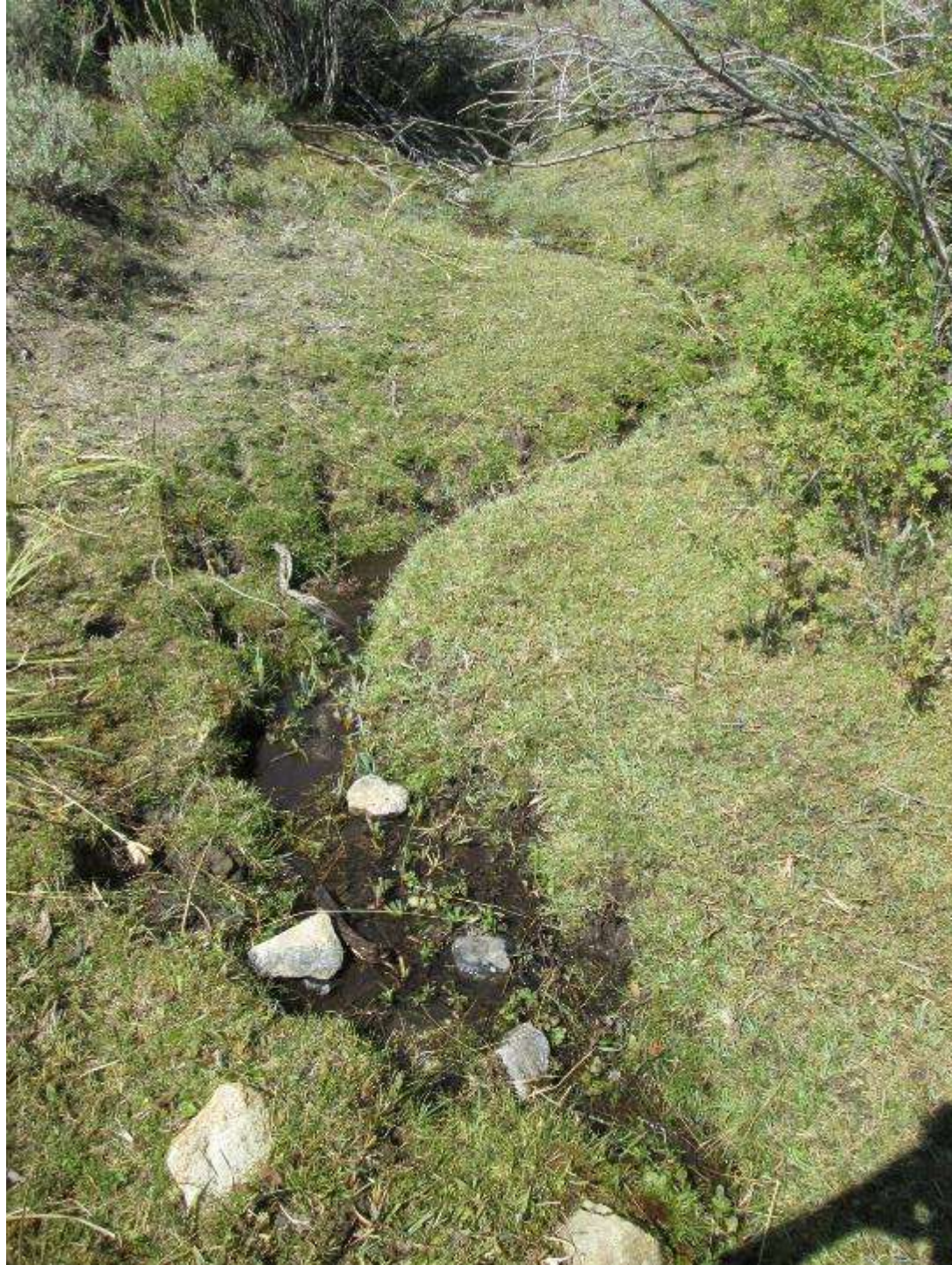






















## **Attachment 2, Part 3**

**East Humboldt Range, NV**, Humboldt Toiyabe National Forest; Slides 2-7; Trailhead sign and impacts of cattle grazing; Photos from 2013. Connie Millar

**Slides show conditions in Wiseman Cr, Winchell Cr, and Schoer Cr along trail to Winchell Lake; montane shrub communities heavily impacted by cattle grazing.**

East Humboldt Wilderness



Apparently the cattle haven't been told this.









