

Environmental Research Letters



LETTER

OPEN ACCESS

RECEIVED
5 February 2017REVISED
14 April 2017ACCEPTED FOR PUBLICATION
26 April 2017PUBLISHED
8 June 2017

Original content from this work may be used under the terms of the [Creative Commons Attribution 3.0 licence](#).

Any further distribution of this work must maintain attribution to the author(s) and the title of the work, journal citation and DOI.



Tree mortality from fires, bark beetles, and timber harvest during a hot and dry decade in the western United States (2003–2012)

Logan T Berner^{1,4}, Beverly E Law¹, Arjan J H Meddens² and Jeffrey A Hicke³¹ Department of Forest Ecosystems and Society, Oregon State University, Corvallis, OR, United States of America² Department of Natural Resources and Society, University of Idaho, Moscow, ID, United States of America³ Department of Geography, University of Idaho, Moscow, ID, United States of America⁴ Current address: School of Informatics, Computing and Cyber Systems, Northern Arizona University, Flagstaff, AZ, United States of AmericaE-mail: logan.berner@nau.edu

Keywords: forest disturbance, carbon stock, logging, greenhouse gas emission, drought, climate change, tree biomass

Supplementary material for this article is available [online](#)

Abstract

High temperatures and severe drought contributed to extensive tree mortality from fires and bark beetles during the 2000s in parts of the western continental United States. Several states in this region have greenhouse gas (GHG) emission targets and would benefit from information on the amount of carbon stored in tree biomass killed by disturbance. We quantified mean annual tree mortality from fires, bark beetles, and timber harvest from 2003–2012 for each state in this region. We estimated tree mortality from fires and beetles using tree aboveground carbon (AGC) stock and disturbance data sets derived largely from remote sensing. We quantified tree mortality from harvest using data from US Forest Service reports. In both cases, we used Monte Carlo analyses to track uncertainty associated with parameter error and temporal variability. Regional tree mortality from harvest, beetles, and fires ($MORT_{H+B+F}$) together averaged 45.8 ± 16.0 Tg AGC yr^{-1} ($\pm 95\%$ confidence interval), indicating a mortality rate of $1.10 \pm 0.38\%$ yr^{-1} . Harvest accounted for the largest percentage of $MORT_{H+B+F}$ ($\sim 50\%$), followed by beetles ($\sim 32\%$), and fires ($\sim 18\%$). Tree mortality from harvest was concentrated in Washington and Oregon, where harvest accounted for $\sim 80\%$ of $MORT_{H+B+F}$ in each state. Tree mortality from beetles occurred widely at low levels across the region, yet beetles had pronounced impacts in Colorado and Montana, where they accounted for $\sim 80\%$ of $MORT_{H+B+F}$. Tree mortality from fires was highest in California, though fires accounted for the largest percentage of $MORT_{H+B+F}$ in Arizona and New Mexico ($\sim 50\%$). Drought and human activities shaped regional variation in tree mortality, highlighting opportunities and challenges to managing GHG emissions from forests. Rising temperatures and greater risk of drought will likely increase tree mortality from fires and bark beetles during coming decades in this region. Thus, sustained monitoring and mapping of tree mortality is necessary to inform forest and GHG management.

1. Introduction

Forests help regulate Earth's climate in part by sequestering carbon from the atmosphere (Bonan 2008, Pan *et al* 2011a, Anderson-Teixeira *et al* 2012), yet tree mortality from disturbance accelerates carbon transfer from these ecosystems back to the atmosphere (Kurz *et al* 2008, Baccini *et al* 2012, Brinck *et al* 2017).

Forests globally store a similar amount of carbon as the atmosphere (Pan *et al* 2011a, Houghton 2013), with much of the carbon ($\sim 42\%$) held in the biomass of living trees (Pan *et al* 2011a). Disturbances such as forest fires, insect outbreaks, and timber harvest can kill trees over large areas each year (Goetz *et al* 2012, Meddens *et al* 2012, Kautz *et al* 2016, Williams *et al* 2016) and thus contribute to increased regional

carbon emissions as tree biomass subsequently decomposes or is rendered into wood products that have finite longevity (Harmon *et al* 1990, Harmon *et al* 2011, Ghimire *et al* 2015). Carbon emissions from forest disturbance can challenge efforts to meet greenhouse gas (GHG) emission targets (Gonzalez *et al* 2015), but are also highly uncertain in many parts of the world (Pacala *et al* 2010). Both the growing global demand for wood products (FAO 2017) and the increase in forest disturbance due to ongoing climatic change (Allen *et al* 2010, Williams *et al* 2012, Kautz *et al* 2016) underscore the need to better understand carbon implications of tree mortality from disturbance.

Forest disturbance by fires and insects increased during recent decades in the western contiguous United States as the regional climate became warmer and more arid (Westerling *et al* 2006, Williams *et al* 2012, Dennison *et al* 2014, Hicke *et al* 2015, Abatzoglou and Williams 2016). Regional mean annual air temperature increased 0.8 °C–1.1 °C from 1895 to 2011, with most of the warming having occurred in recent decades (Mote *et al* 2014, Walsh *et al* 2014). Higher temperatures contributed to higher atmospheric vapor pressure deficits (Abatzoglou and Williams 2016), reduced mountain snowpack (Mote *et al* 2005), and more frequent and severe drought (McCabe *et al* 2004, Diffenbaugh *et al* 2015). For instance, the western US recently experienced its most severe drought (2000–2004) in the past 800 years (Schwalm *et al* 2012), with hot and dry conditions then prevailing through the 2000s (Diffenbaugh *et al* 2015, Abatzoglou and Williams 2016). These conditions contributed to extensive forest disturbance by fires and bark beetles relative to recent decades (Williams *et al* 2012, Creeden *et al* 2014, Abatzoglou and Williams 2016). High temperatures and drought increase regional forest fire occurrence (Littell *et al* 2016) and the likelihood of post-fire tree mortality (i.e. increased fire severity; van Mantgem *et al* 2013), while also increasing beetle populations and the vulnerability of drought-stricken trees to beetle attack (Raffa *et al* 2008, Creeden *et al* 2014, Hart *et al* 2014). Projections indicate that regional temperatures could rise another ~3.8 °C–5.5 °C by the end of the 21st century and that much of the region, particularly the Southwest, could become increasingly arid and prone to drought under a high GHG scenario (RCP 8.5; Kunkel *et al* 2013, Walsh *et al* 2014, Cook *et al* 2015). These changes in regional climate could further accelerate tree mortality (Adams *et al* 2009, Allen *et al* 2015) and increase carbon emissions from forest ecosystems (Spracklen *et al* 2009, Jiang *et al* 2013, McDowell *et al* 2015).

Several states in the western US have GHG reduction targets (e.g. Oregon, California) and would thus benefit from information on the magnitude and primary causes of recent tree mortality. Prior studies have shown that fires, bark beetles, and timber harvest

are important causes of tree mortality in this region (Masek *et al* 2011, Meddens *et al* 2012, Hicke *et al* 2015). In this study, we asked ‘What was the magnitude and relative contribution of mean annual tree mortality from fires, bark beetles, and timber harvest from 2003–2012 both regionally and among the 11 western states?’ Tree mortality can be quantified over large areas in terms of carbon using remote sensing estimates of tree aboveground biomass (AGB) together with information on the carbon content of AGB, as well as disturbance extent and severity (Baccini *et al* 2012, Hicke *et al* 2013). Here we quantified tree mortality as the amount of *carbon stored in tree AGB* (AGC) killed by disturbance (e.g. Mg AGC ha yr⁻¹ or Tg AGC state yr⁻¹). Specifically, we developed spatially explicit estimates of annual tree mortality from fires and bark beetles across regional forestland building off of a remote sensing framework from an earlier study (Hicke *et al* 2013). In addition to the remote sensing analysis, we estimated mean annual tree mortality from timber harvest for each state using harvest statistics from the US Forest Service (USFS; Smith *et al* 2009, Oswald *et al* 2014). The USFS recently recommended that metrics related to fire and insect effects be used to track national climate change impacts (Heath *et al* 2015), further underscoring the importance of quantifying the magnitude and regional variation in tree mortality from these types of disturbance.

2. Methods

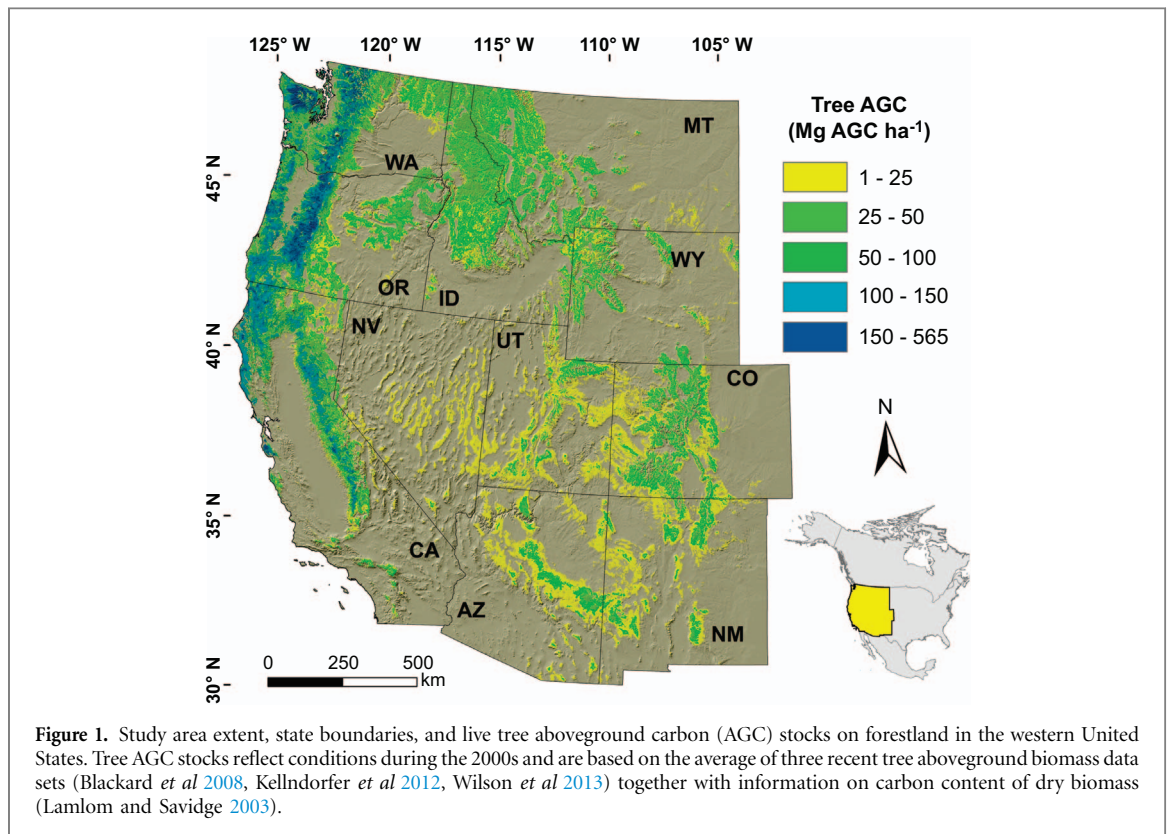
2.1. Geospatial data sets and preprocessing

2.1.1. General information

We quantified tree mortality from fires (MORT_{fire}, Mg AGC ha yr⁻¹) and bark beetles (MORT_{beetle}, Mg AGC ha yr⁻¹) from 2003–2012 across 802 575 km² of forestland located in the western US (figure 1, 31.3°N–49.0°N, 102.0°W–124.5°W). Forestlands were included if consistently mapped as forest by three separate tree AGB data sets (described below). We conducted the analysis on a 1 km resolution grid in an Albers Equal Area projection, with the resolution chosen to match the bark beetle data set (Meddens *et al* 2012). We analyzed and visualized the data using ArcGIS 10 (ESRI, Redlands, CA) and R statistical software (version 3.2; R Core Team 2015), along with the R packages *raster* (Hijmans and van Etten 2013) and *dplyr* (Wickham and Francois 2015). The data preprocessing work flow described in the following section is illustrated in figure 2.

2.1.2. Tree carbon stocks

We estimated tree AGC using three tree AGB geospatial data sets together with information on the fraction of dry biomass that is carbon (f_{carbon}). The tree AGB data sets were produced by spatially interpolating USFS inventory measurements (FIA)



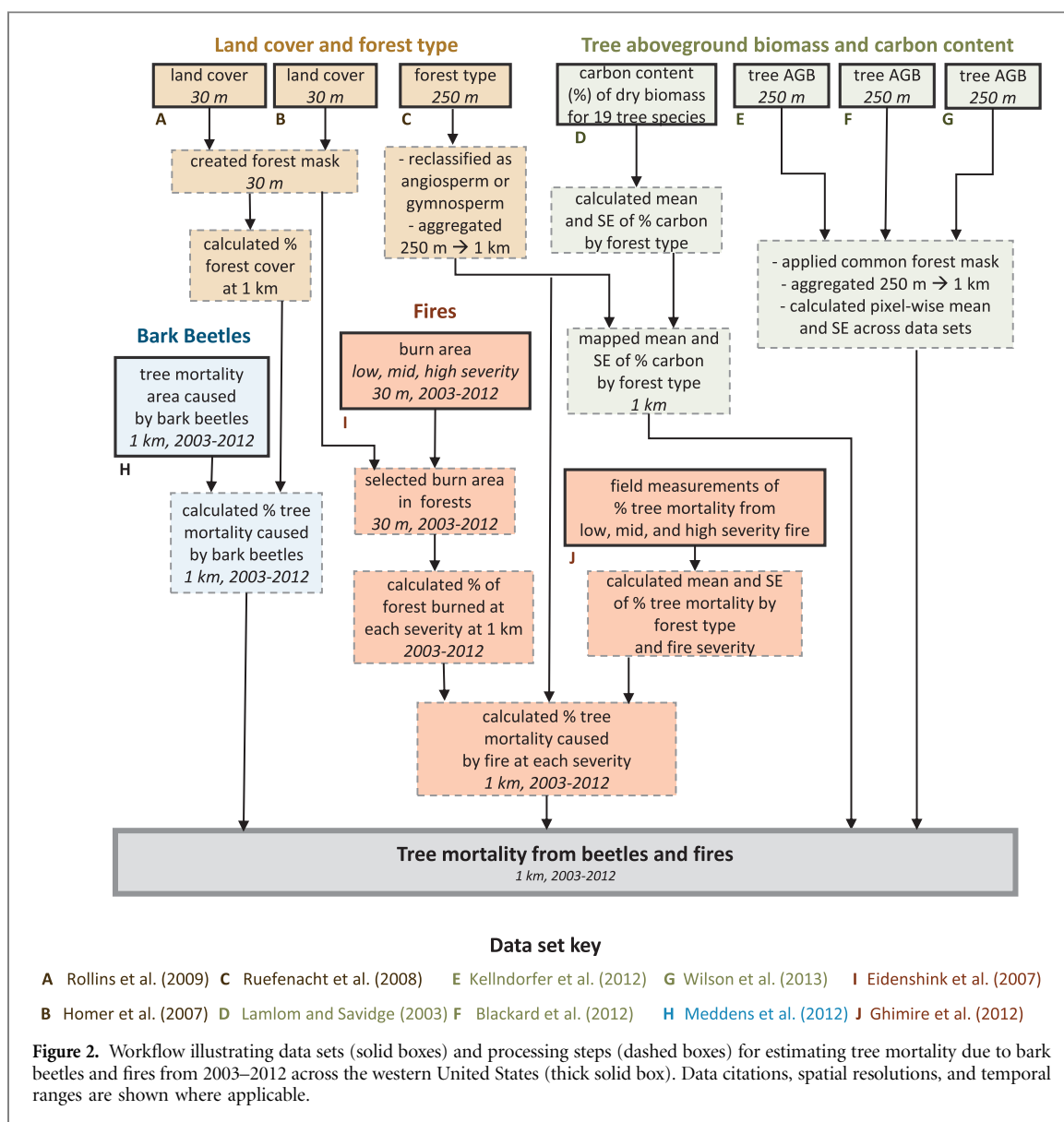
using satellite and geophysical data sets in conjunction with machine learning algorithms (Blackard *et al* 2008, Kellndorfer *et al* 2012, Wilson *et al* 2013). Wilson *et al* (2013) provided estimates of tree AGC assuming that f_{carbon} was 50%; we converted these estimates back to tree AGB by multiplying by 2. We acquired each data set at 250 m spatial resolution, reprojected it to an Albers Equal Area projection, and then applied a common mask that identified pixels consistently classified as forest among all data sets. Next, we aggregated from 250 m to 1 km resolution by computing total tree AGB in each 1 km pixel (i.e. Mg AGB pixel⁻¹).

We quantify tree mortality from 2003–2012 and required estimates of tree AGB prior to disturbance. Two of these data sets represented tree AGB circa 2000 (Blackard *et al* 2008, Kellndorfer *et al* 2012), whereas the third depicted tree AGB circa 2003–2008 (Wilson *et al* 2013). Therefore we needed to estimate pre-disturbance tree AGB in pixels that were disturbed during these six years in the Wilson *et al* (2013) data set. We followed an existing approach (Hicke *et al* 2013) that involved comparing tree AGB in fire and beetles disturbed pixels against the average tree AGB of undisturbed pixels from the same forest type (Ruefenacht *et al* 2008) and ecoregion (Omernik 1987). If tree AGB in the disturbed pixel was less than the average tree AGB of undisturbed pixels, then we set tree AGB in the disturbed pixel to this average, but otherwise left the disturbed pixel unaltered. After implementing this correction, we then computed the average and standard error (SE) of tree AGB for each

pixel over the three data sets ($\overline{\text{AGB}}$, SE_{AGB}). Lastly, we estimated the average and SE of f_{carbon} ($\overline{f_{\text{carbon}}}$, $\text{SE}_{\text{carbon}}$) for hardwood (angiosperm, $48.49 \pm 0.42\%$ C, $n = 8$) and softwood (gymnosperm, $50.87 \pm 0.63\%$ C, $n = 11$) tree species found in this region (Lamloom and Savidge 2003).

2.1.3. Forest fires

We used annual maps of fire severity from 2003–2012 produced by the Monitoring Trends in Burn Severity (MTBS) project (Eidenshink *et al* 2007). These maps were derived from 30 m resolution Landsat images acquired before and after fires larger than ~ 405 ha in the western US. Fire severity was mapped using the differenced Normalized Burn Ratio (dNBR) and then each pixel was classified as one of five thematic severity classes. We focused on pixels that burned at low-, moderate-, or high-severity and excluded those that were unburned or showed post-fire greening. We identified fire in forests by generating a 30 m resolution forest mask based on forestland in either of two national land cover maps (Homer *et al* 2007, Rollins 2009). We then computed the annual fraction of forest area that burned at each severity (A_s) in each 1 km pixel over the decade. Lastly, we incorporated field measurements of the fraction of tree biomass killed at each severity (f_{fire}). We computed the mean and SE of f_{fire} ($\overline{f_{\text{fire}}}$, SE_{fire}) for forests dominated by hardwood and softwood tree species based on 116 estimates of f_{fire} synthesized from 29 field studies conducted in the western United States (table S1 available at stacks.iop.org/ERL/12/065005/mmedia, Ghimire *et al* 2012).



2.1.4. Bark beetles

We used annual maps depicting the areal extent of tree canopy mortality due to 12 bark beetle species that were produced from aerial surveys, forest inventory measurements, and high-resolution satellite imagery (Meddens *et al* 2012). The USFS National Forest Health Monitoring program conducts aerial detection surveys (ADS) that provide a coarse snapshot of insect and other forest disturbance at a landscape scale (Johnson and Wittwer 2008). Trained observers conduct surveys from fixed-wing aircraft that involve sketch-mapping the extent of areas affected by insect outbreaks and then visually estimating the number of dead trees within affected areas. Meddens *et al* (2012) used the ADS observations to estimate annual canopy mortality area due to bark beetles across the western US from 1997–2010, with estimates then extended through 2012 (Hicke *et al* 2015).

Canopy mortality area was estimated at 1 km resolution based on the number of recently killed trees and the average canopy area of each tree species. The

ADS observations underestimated the number of trees killed by bark beetles in comparison with field observations and QuickBird (2.4 m resolution) satellite imagery from Colorado, Idaho, and New Mexico. This led to the development of adjustment factors for several forest types based on the ratio of dead trees mapped from satellite to ADS tree kill counts. These adjustment factors were then used to modify ADS tree kill counts, resulting in high and middle (most realistic) estimates as well as low estimates based on unaltered ADS numbers (more details in: Meddens *et al* 2012, Hicke *et al* 2015). The data set includes bark beetle species that cumulatively killed at least 100 000 trees across the domain from 1997–2010. Specifically, it includes (from greatest to least mortality area) mountain pine beetle (*Dendroctonus ponderosae* Hopkins), piñon ips (*Ips confusus* (LeConte)), Douglas-fir beetle (*Dendroctonus pseudotsugae* Hopkins), western balsam bark beetle (*Dryocoetes confuses* (Swaine)), and fir engraver (*Scolytus ventralis* LeConte), as well as seven additional beetle species

that killed fewer trees. We masked these data to our domain and then summed canopy mortality area across bark beetle species for each 1 km pixel in a given year (i.e. a voxel) from 2003–2012. We then calculated annual tree canopy mortality fraction (f_{beetle}) for each voxel by dividing canopy mortality area by forest cover fraction. We incorporated the lower, middle, and upper estimates of f_{beetle} into our analysis.

2.2. Tree mortality from bark beetles and fires

We developed spatially explicit estimates of annual $\text{MORT}_{\text{beetle}}$ and $\text{MORT}_{\text{fire}}$ from 2003–2012 and quantified uncertainty in these estimates using a Monte Carlo approach (e.g. Harmon *et al* 2007, Gonzalez *et al* 2015). The Monte Carlo involved generating 100 realizations of annual tree mortality in each voxel, where each realization iteratively varied tree $\overline{\text{AGC}}$, \bar{f}_{carbon} , f_{beetle} , and \bar{f}_{fire} based on uncertainty in each term. We assumed that tree AGC within a pixel only changed due to disturbance (i.e. no tree growth or recruitment), which potentially caused us to slightly underestimate tree mortality. For instance, stand age averaged 97 ± 73 years ($\pm 1\text{SD}$) in our study area (Pan *et al* 2011b). Field measurements from the Western Cascades (Hudiburg *et al* 2009) and the Rocky Mountains showed that tree AGC could increase 6%–7% between stands that are 97 and 106 years old. This simplifying assumption made it so that cumulative tree mortality within a pixel could not exceed the initial tree AGC. For each realization r we first computed tree AGC for pixel p of year $t = 2003$ as

$$\overline{\text{AGC}}_{r,p,t} = (\overline{\text{AGB}}_{p,t} + a_{\text{AGB},r} \times \text{SE}_{\text{AGB},p}) \times (\bar{f}_{\text{carbon}} + a_{\text{carbon},r} \times \text{SE}_{\text{carbon}}) \quad (1)$$

where \bar{f}_{carbon} and $\text{SE}_{\text{carbon}}$ varied by forest type and a_x was a random number from a normal distribution (mean = 0, SD = 1) that differed for each variable with each realization. The other variables are defined above. We then calculated $\text{MORT}_{\text{beetle}}$ as

$$\text{MORT}_{\text{beetle},r,p,t} = \overline{\text{AGC}}_{r,p,t} \times \hat{f}_{\text{beetle},p,t} \quad (2)$$

where $\hat{f}_{\text{beetle},p,t}$ was an estimate of f_{beetle} drawn randomly from a triangular distribution defined uniquely for each voxel using the low, middle, and high estimates of f_{beetle} . Each distribution was fit using the *triangle* package in R (Carnell 2016). Next, we computed $\text{MORT}_{\text{fire}}$ as

$$\text{MORT}_{\text{fire},r,p,t} = (\overline{\text{AGC}}_{r,p,t} - \text{MORT}_{\text{beetle},r,p,t}) \times \sum_s^{\text{severity classes}} [A_{p,t,s} \times (\bar{f}_{\text{fire},s} + a_{\text{fire},s,r} \times \text{SE}_{\text{fire},s})] \quad (3)$$

We then reduced tree AGC stocks at the start of year $t + 1$ to account for mortality in year t , such that

$$\overline{\text{AGC}}_{r,p,t+1} = \overline{\text{AGC}}_{r,p,t} - (\text{MORT}_{\text{beetle},r,p,t} + \text{MORT}_{\text{fire},r,p,t}) \quad (4)$$

We repeated equations 2–4 annually through 2012 and then repeated the entire process 100 times.

We then computed the mean and standard deviation (SD) of these multiple estimates of tree mortality for each voxel, where the SD represented uncertainty due to parameter error (e.g. SE_{AGB} , SE_{fire}). Altogether, this process yielded spatially explicit estimates of annual tree mortality (and uncertainty) caused by fires and bark beetles from 2003–2012 across forestland in the western United States.

Following the geospatial analysis, we estimated mean annual tree mortality from fires ($\overline{\text{MORT}}_{\text{fire}}$) and bark beetles ($\overline{\text{MORT}}_{\text{beetle}}$) for each state from 2003–2012 and used a Monte Carlo analysis to propagate uncertainty in these estimates associated with parameter error and temporal variability. As illustrated for fires (identical for beetles), we first derived 1000 realizations r of annual tree mortality in each state from $t = 2003$ to 2012, as per

$$\text{MORT}_{\text{fire},r,\text{state},t} = \sum_{p=1}^{\text{N pixels}} (\text{MORT}_{\text{fire},p,t} + a_r \times \text{SD}_{\text{MORT}_{\text{fire},p,t}}) \quad (5)$$

and then summarized (mean and SD) each set of realizations. We used these annual statewide summaries to then repeatedly ($N_r = 1000$) estimate both the mean and SE of annual mortality from 2003–2012 for each state, where each realization randomly varied annual statewide mortality by its parameter error (i.e. SD computed above). We again summarized (mean and SD) each set of realizations for both statistics. This yielded an estimate of $\overline{\text{MORT}}_{\text{fire}}$ for each state and produced estimates of uncertainty in $\overline{\text{MORT}}_{\text{fire}}$ due to parameter error (i.e. SD of estimates of $\overline{\text{MORT}}_{\text{fire}}$) and temporal variability (i.e. mean of estimates of SE of annual mortality).

In the final step, we derived a 95% confidence interval (CI) around each estimate of $\overline{\text{MORT}}_{\text{fire}}$ that accounted for both parameter error and temporal variability. This involved repeatedly estimating $\overline{\text{MORT}}_{\text{fire}}$ for each state, where each realization randomly varied $\overline{\text{MORT}}_{\text{fire}}$ by uncertainty associated with both parameter error and temporal variability. We then computed the 95% CI (Gonzalez *et al* 2015) for each state, as per

$$95\% \text{ CI} = \frac{\overline{\text{MORT}}_{\text{fire}}^{97.5} - \overline{\text{MORT}}_{\text{fire}}^{2.5}}{2} \quad (6)$$

where $\overline{\text{MORT}}_{\text{fire}}^{97.5}$ and $\overline{\text{MORT}}_{\text{fire}}^{2.5}$ were the 97.5th and 2.5th percentiles of 1000 realizations of $\overline{\text{MORT}}_{\text{fire}}$. Overall, this approach yielded estimates of mean annual tree mortality ($\pm 95\%$ CI) due to fires and bark

beetles from 2003–2012 for each state in the western US. We present these estimates both in terms of absolute tree mortality (Tg AGC yr^{-1}) and mortality rate (i.e. % of statewide $\overline{\text{AGC}}$ in tree biomass killed each year).

2.3. Tree mortality from timber harvest

We estimated mean annual tree mortality caused by timber harvest from 2003–2012 for each state ($\overline{\text{MORT}}_{\text{harvest}}$, Tg AGC yr^{-1}) using timber product output surveys from several USFS reports along with information on tree characteristics. We again used a Monte Carlo analysis to propagate uncertainty in $\overline{\text{MORT}}_{\text{harvest}}$ that was associated with parameter error and temporal variability. The USFS reported harvest for each state in terms of mean annual growing stock volume (GSV, $\text{m}^3 \text{yr}^{-1}$) removed from c. 2003 to 2007 (Smith *et al* 2009) and c. 2008 to 2012 (Oswalt *et al* 2014). Harvest was reported separately for hardwood and softwood tree species. We calculated mean annual GSV removed across these two periods for both species groups in each state ($\overline{\text{GSV}}$). In each case, we then estimated $\overline{\text{MORT}}_{\text{harvest}}$ from $\overline{\text{GSV}}$ using information on the ratio of total aboveground tree volume to GSV(R), wood density (WD , Mg m^{-3}), and the fraction of dry woody biomass that is carbon (f_{carbon}), as per

$$\overline{\text{MORT}}_{\text{harvest}} = \overline{\text{GSV}} \times \overline{R} \times \overline{WD} \times \overline{f} \quad (7)$$

We repeatedly ($N_r = 1000$) estimated $\overline{\text{MORT}}_{\text{harvest}}$ for both species groups in each state as part of the Monte Carlo analysis, which again involved randomly varying each parameter by its uncertainty (e.g. as shown in equation (1)). It was not possible to directly compute the uncertainty (SE) associated with temporal variability in the amount of GSV annually removed since annual harvest data were not available for each state. We therefore assumed that the SE was 4.6% of $\overline{\text{GSV}}$ based concurrent annual harvest data from Oregon, which accounted for 35% regional harvest (Oregon Department of Forestry 2017). We used estimates of average R (\overline{R}) that varied for hardwoods and softwoods, as well as among states in different USFS regions (Birdsey 1992), assuming in each case that the SE was 2% of \overline{R} (Levy *et al* 2004). We computed average WD (\overline{WD}) and its uncertainty (SE_{WD}) for both species groups in each state by (1) identifying the four tree species in each group that accounted for the largest percentages of total tree AGB on USFS inventory plots surveyed 2003–2012 (Smith 2002) and then (2) summarizing WD measurements among these species (Miles and Smith 2009). After repeatedly estimating $\overline{\text{MORT}}_{\text{harvest}}$, we then derived the average and associated 95% CI from each set of 1000 realizations (e.g. equation (6)). We report $\overline{\text{MORT}}_{\text{harvest}}$ ($\pm 95\%$ CI) for each state both in terms of absolute mortality (Tg AGC yr^{-1}) and mortality rate ($\% \text{yr}^{-1}$).

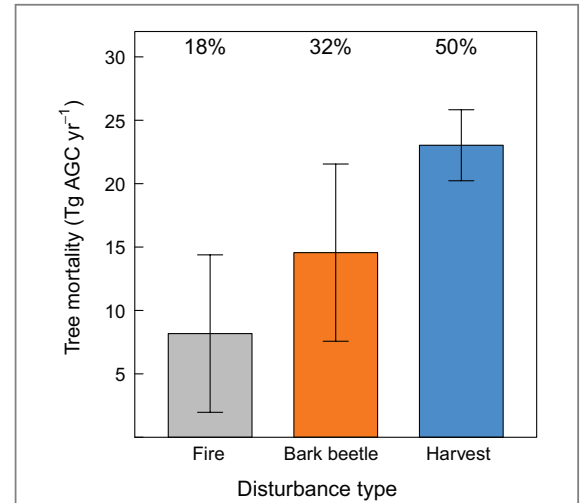


Figure 3. Regional mean annual tree mortality from fires, bark beetles, and timber harvest from 2003–2012 on forestland in the western United States. Tree mortality was quantified as the amount of aboveground carbon (AGC) stored in tree biomass killed by disturbance (Tg AGC yr^{-1}). Tree mortality from bark beetles and fires was derived using remote sensing, whereas harvest was derived from USFS forest resource assessments (Smith *et al* 2009, Oswalt *et al* 2014). Error bars depict 95% confidence intervals computed with a Monte Carlo analysis and incorporate temporal variability and parameter error. We estimated that regional mean annual tree mortality from fires, beetles, and harvest was $45.8 \pm 16.0 \text{ Tg AGC yr}^{-1}$ from 2003–2012, with fires, beetles, and harvest accounting for 18%, 32%, and 50% of annual mortality, respectively.

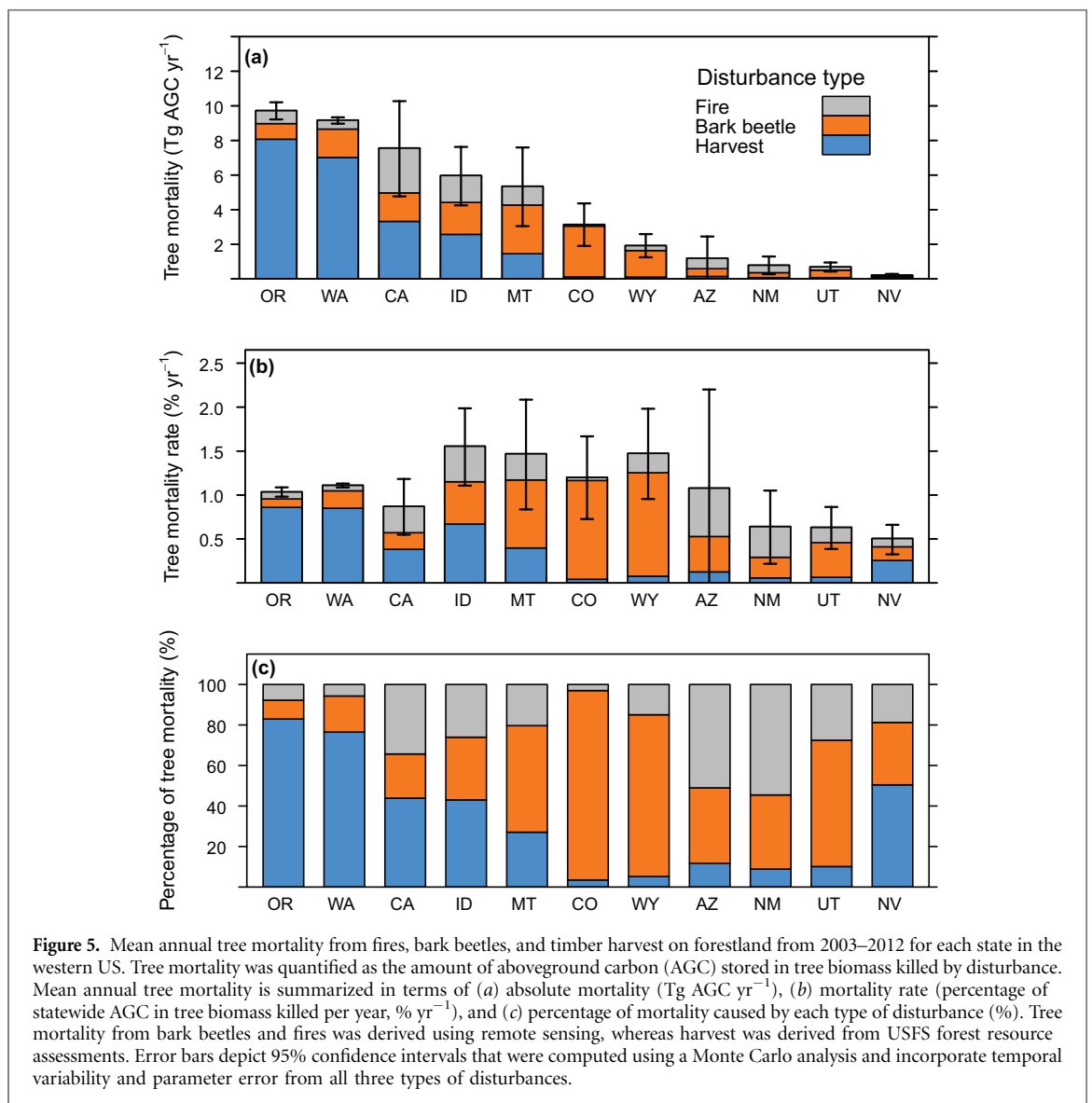
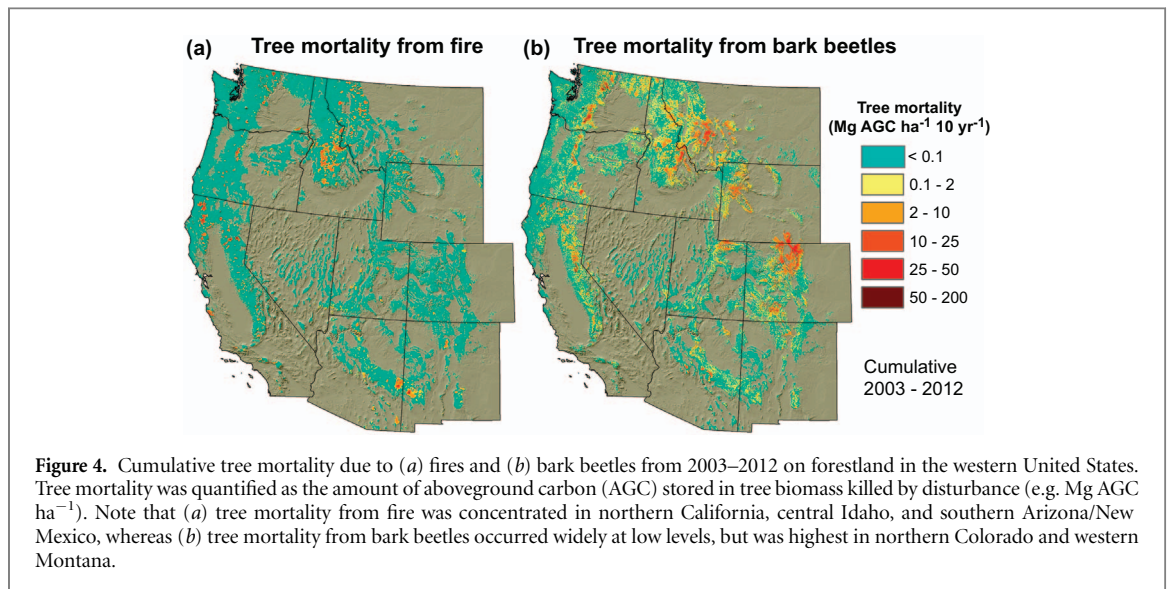
3. Results

3.1. Regional tree mortality from disturbance

Taken together, mean annual tree mortality from timber harvest, bark beetles, and fires ($\overline{\text{MORT}}_{\text{H+B+F}}$) was $45.8 \pm 16.0 \text{ Tg AGC yr}^{-1}$ from 2003–2012 across the western US. Regional tree $\overline{\text{AGC}}$ stocks totaled $4.16 \pm 0.12 \text{ Pg}$, suggesting that the tree mortality rate was $1.10 \pm 0.38\% \text{yr}^{-1}$. Timber harvest accounted for the largest percentage of $\overline{\text{MORT}}_{\text{H+B+F}}$ (50%), followed by bark beetles (32%) and then fires (18%, figure 3, table S2).

3.2. Tree mortality from fire

Mean annual tree mortality from fires ($\overline{\text{MORT}}_{\text{fire}}$) was $8.2 \pm 6.2 \text{ Tg AGC yr}^{-1}$ and the mortality rate was $0.20 \pm 0.15\% \text{yr}^{-1}$ from 2003–2012 in the western US (figures 3, 4(a), 5, table S2). Absolute $\overline{\text{MORT}}_{\text{fire}}$ was highest in northern California, central Idaho, and western Montana, with these states accounting for 64% of regional $\overline{\text{MORT}}_{\text{fire}}$. Forests in Arizona and New Mexico experienced the highest annual rates of $\overline{\text{MORT}}_{\text{fire}}$ ($0.36\%–0.57\% \text{yr}^{-1}$), as well as the highest percentage of $\overline{\text{MORT}}_{\text{H+B+F}}$ caused by fire (51%–55%). Conversely, forests in Colorado, Oregon, and Washington had the lowest rates of $\overline{\text{MORT}}_{\text{fire}}$ ($0.03\%–0.08\% \text{yr}^{-1}$) and the lowest percentage of $\overline{\text{MORT}}_{\text{H+B+F}}$ caused by fire (2%–8%). Fires that occurred in Oregon and Washington were largely concentrated along the eastern slopes of the Cascade Range.



3.3. Tree mortality from bark beetles

Mean annual tree mortality from bark beetles ($\overline{\text{MORT}}_{\text{beetle}}$) was 14.6 ± 7.0 Tg AGC yr^{-1} and the mortality rate was $0.35 \pm 0.17\% \text{yr}^{-1}$ from 2003–2012 in the western US (figures 3, 4(b), 5, table S2). Absolute $\overline{\text{MORT}}_{\text{beetle}}$ was highest in northern Colorado, western Montana, and central Idaho, with these states accounting for 52% of regional $\overline{\text{MORT}}_{\text{beetle}}$ (table S2). Forests in Colorado and Wyoming had the highest annual rates of $\overline{\text{MORT}}_{\text{beetle}}$ (1.12%–1.22% yr^{-1}) and the highest percentage of $\overline{\text{MORT}}_{\text{H+B+F}}$ caused by bark beetles (80%–93%). Conversely, Oregon and Washington had not only two of the lowest rates of $\overline{\text{MORT}}_{\text{fire}}$, but also two of the lowest rates of $\overline{\text{MORT}}_{\text{beetle}}$ (0.10%–0.20% yr^{-1}).

3.4. Tree mortality from timber harvest

Mean annual tree mortality from timber harvest ($\overline{\text{MORT}}_{\text{harvest}}$) was 23.0 ± 2.8 Tg AGC yr^{-1} and the mortality rate was $0.55 \pm 0.07\% \text{yr}^{-1}$ from 2003–2012 in the western US (figures 3, 5, table S2). Timber harvest in Oregon and Washington accounted for 67% of regional $\overline{\text{MORT}}_{\text{harvest}}$. These two states had the highest rates of $\overline{\text{MORT}}_{\text{harvest}}$ (0.85%–0.86% yr^{-1}) and the highest percentage of $\overline{\text{MORT}}_{\text{H+B+F}}$ caused by harvest (76%–83%). Conversely, forest in Colorado, Utah, and New Mexico had the lowest rates of $\overline{\text{MORT}}_{\text{harvest}}$ (0.04%–0.06% yr^{-1}) and among the lowest percentage of $\overline{\text{MORT}}_{\text{H+B+F}}$ caused by harvest (3%–10%).

4. Discussion

4.1. Regional tree mortality from disturbance

In this study, we quantified tree mortality caused by timber harvest, bark beetles, and fire from 2003–2012 across the western US. We found that regional mean annual tree mortality from timber harvest (~ 23 Tg AGC yr^{-1}) was quite similar in magnitude to the mortality from fires and bark beetles combined (~ 22 Tg AGC yr^{-1}). Regional timber harvest declined about 40% since the 1980s (Oswalt *et al* 2014), yet harvest still caused significantly more tree mortality than bark beetles or fires during the 2000s, a period during which hot and dry conditions contributed to extensive beetle and fire activity relative to the last several decades (Williams *et al* 2012, Hicke *et al* 2015, Meddens *et al* 2015, Abatzoglou and Williams 2016, Cohen *et al* 2016).

Our regional tree mortality estimates were comparable with several other studies from the western US. For instance, forest inventories indicated that the regional tree mortality rate was $\sim 0.72\%$ – $0.92\% \text{yr}^{-1}$ during the 2000s in areas unaffected by harvest or land clearing (Oswalt *et al* 2014). By comparison, we estimated that the tree mortality rate from fires and bark beetles combined was $\sim 0.56\% \text{yr}^{-1}$, suggesting that these disturbances together might have accounted

for $\sim 60\%$ – 80% of regional tree mortality not associated timber harvest or land clearing. Our estimates of tree mortality from fires and bark beetles were also of similar magnitude to those predicted using the CASA (Carnegie–Ames–Stanford Approach) carbon cycle model with fire (Ghimire *et al* 2012) and beetle (Ghimire *et al* 2015) disturbances prescribed using MTBS and ADS data sets, respectively. Lastly, our estimates of regional $\text{MORT}_{\text{H+B+F}}$ in 2003 and 2004 differed by $\pm 5\%$ from estimates of tree mortality due to all forms (undifferentiated) of disturbance that were derived using a regional sample of Landsat scenes from 1986–2004 (Powell *et al* 2014). Similarity among these field, modeling, and remote sensing estimates of regional tree mortality is encouraging. Together these comparisons suggest that timber harvest, bark beetles, and fires were the primary causes of tree mortality from disturbance during the 2000s in the western US.

Our current estimates of cumulative (2003–2012) regional tree mortality from fires and bark beetles were both $\sim 40\%$ lower than earlier best-estimates reported by Hicke *et al* (2013). This downward revision stemmed from refinements in representation of tree AGB, more realistic parameterization of tree mortality from fire, and a routine that tracked prior tree mortality within each grid cell. Estimating tree mortality in terms of carbon necessitated accurate representation of tree AGB; however, estimates of tree AGB differ among available data sets, particularly at the pixel scale (figure S1; Huang *et al* 2015, Neeti and Kennedy 2016). We therefore chose to incorporate an ensemble of available data sets (Blackard *et al* 2008, Kellndorfer *et al* 2012, Wilson *et al* 2013) rather than rely on a single data set as was done in the prior study (Hicke *et al* 2013). This improvement accounted for $\sim 10\%$ of the reduction in tree mortality between studies and allowed us to propagate uncertainty in tree AGB into our estimates of mortality. Our current analysis also used a regional synthesis of field measurements (Ghimire *et al* 2012) to vary tree mortality fraction by forest type and fire severity rather than assume complete tree mortality in areas that burned at moderate or high severity (Hicke *et al* 2013). This further reduced our estimates of tree mortality from fire. Lastly, we found that 39% of the forested grid cells (1 km²) registered multiple disturbances during this decade. We therefore implemented a routine that reduced tree AGB each time a disturbance occurred, which reduced the amount of tree AGB killed by subsequent disturbance. These improvements enabled more robust estimation of how much carbon was stored in trees recently killed by fires and beetles across the western US.

The carbon in trees killed by disturbance will be emitted to the atmosphere as dead trees decompose in the forest and as harvested trees are processed into wood products with varying efficiency and longevity (Harmon *et al* 1990, Harmon *et al* 2011, Hudiburg *et al* 2011). Ignoring pyrogenic emissions, mean

annual tree mortality from fire and beetles could together lead to emission of $\sim 0.8 \text{ Tg C yr}^{-1}$ during the following decade assuming exponential decay and an intermediate rate constant ($k = 0.04$; Harmon *et al* 1986). Actual decomposition rates will depend on the interplay among snag fall rate, microclimate, wood chemistry, tree anatomy, and other factors (Weedon *et al* 2009, Harmon *et al* 2011). Similarly, mean annual tree mortality from harvest could lead to emission of around 1.3 Tg C yr^{-1} during the following decade assuming that (1) 60% of harvested material went to fuels, paper, and residues that lasted < 5 years (Harmon *et al* 1990) and that (2) the remaining 40% of material went to longer term storage that remained unchanged during the first decade. In other words, tree mortality from harvest, bark beetles, and fires averaged $45.8 \pm 16.0 \text{ Tg AGC yr}^{-1}$, yet annual emissions are potentially closer to 2 Tg C yr^{-1} during the first decade following disturbance and will persist for decades to centuries. By comparison, regional fossil fuel emissions averaged $\sim 260 \text{ Tg C yr}^{-1}$ during this period (US Energy Information Administration 2015). More accurate assessment of the timing and magnitude of carbon emissions requires using robust ecosystem models and life cycle assessments (e.g. Hudiburg *et al* 2011, Ghimire *et al* 2015).

4.2. Tree mortality from fire

Tree mortality from fire was highest in the Southwest, with regional variation in mortality associated with differences in drought severity and human activities. States with more consistently severe summer drought tended to have the highest average tree mortality rate from fires (e.g. Arizona), whereas states that experienced less consistently severe drought tended to have lower mortality from fires (e.g. Oregon, figures S2, S3). Hot and dry conditions increase fuel flammability and fire occurrence among forests in the western US (Littell *et al* 2009, Morton *et al* 2013, Abatzoglou and Williams 2016). Furthermore, drought-stricken trees are more likely to die if a fire does occur (van Mantgem *et al* 2013), potentially because of more extensive xylem cavitation and hydraulic impairment during a fire (Michaletz *et al* 2012, van Mantgem *et al* 2013).

Human activities, including fire ignition and suppression, also affected regional variation in fire activity. Human fire ignitions were responsible for $\sim 32\%$ of the total area burned in the western US from 1992–2012 and were concentrated among the more densely populated coastal states (Balch *et al* 2017). Humans were the primary cause of fire ignitions in California (Balch *et al* 2017), where drought-affected forests experienced the highest tree mortality from fire of any western state ($\sim 2.6 \text{ Tg AGC yr}^{-1}$). The federal government recently spent $\sim \$400$ million per year on fire suppression in California, which accounted for about half of the federal expenditure on fire suppression in the western US (Kenward and Raja 2013). Nevertheless, plant mortality from fire averaged

$\sim 4.3 \text{ Tg AGC yr}^{-1}$ across all of California's ecosystems from 2001–2010, which led to an estimated 8% net reduction in statewide plant AGC and complicated efforts to reduce GHG emissions (Gonzalez *et al* 2015).

It is widely perceived in California and other parts of the region that beetle-killed trees increase subsequent risk of fire (Heller 2017), yet recent studies indicate that beetle outbreaks have not increased burn area (Hart *et al* 2015, Meigs *et al* 2015a) or fire severity in the region (Bond *et al* 2009, Meigs *et al* 2016, Reilly and Spies 2016). Similarly, we found no association between statewide tree mortality rates from fires and beetles ($P = 0.88$), though lagged effects and the spatial scale of this comparison could mask potential interactions.

The MTBS data set provides a valuable record of fire extent and severity across the nation (Eidenshink *et al* 2007), though additional efforts are needed to better quantify fire severity (Kolden *et al* 2015). It is also important to better understand how mortality differs among co-occurring trees species with different functional traits (e.g. bark thickness; Pausas 2015). Projected shifts towards a hotter, drier climate could potentially increase fire activity in the Southwest and other dry parts of the region over the coming century (Spracklen *et al* 2009, Williams *et al* 2014), contributing to increases in tree mortality, cost of wildfire management, and GHG emissions.

4.3. Tree mortality from bark beetles

Tree mortality from bark beetles was pervasive at low levels across the region, though was pronounced in the Rocky Mountains (e.g. Colorado) where beetles accounted for $\sim 80\%$ of $\overline{\text{MORT}}_{\text{H+B+F}}$. Mountain pine beetles were responsible for $\sim 62\%$ of tree mortality area (5.37 Mha) caused by bark beetles from 1997–2010 in the western US and largely affected lodgepole pine (Meddens *et al* 2012, Hicke *et al* 2015). In this region, lodgepole pine occur most extensively in the Rocky Mountains, where stands were generally of an age (80–120 years) and stem density ($> 500 \text{ stems ha}^{-1}$) that rendered them more susceptible to beetle attack than lodgepole pine in the coastal states, which tended to be younger and less widespread (Hicke and Jenkins 2008). Forests in the Rocky Mountains also experienced long-term warming that increased beetle populations by reducing beetle mortality during winter and accelerating beetle development (Logan and Powell 2001, Creeden *et al* 2014). Furthermore, states with the most severe single-year summer drought tended to have the highest average tree mortality rate from beetles (e.g. Colorado, Wyoming), whereas states that experienced less acute drought tended to have lower mortality from beetles (e.g. Oregon, figure S4). High tree mortality from beetles in the Rocky Mountains has been linked to acute drought that weakened tree defense against beetle attack (Creeden *et al* 2014, Hart *et al* 2014) in stands already subject to

high structural susceptibility and larger beetle populations (Logan and Powell 2001, Hicke and Jenkins 2008).

Lower tree mortality from beetles in other parts of the region could reflect less severe drought (Abatzoglou and Redmond 2017), lower stand susceptibility (Hicke and Jenkins 2008), and different host and beetle species. Low insect-caused mortality among wet coastal forests (Meddens *et al* 2012, Meigs *et al* 2015b, Reilly and Spies 2016) might be linked to higher tree species diversity (Waring *et al* 2006) limiting host availability and population size of host-specific beetle species (Anderegg *et al* 2015). The coastal forests also tend to be younger than forests in the Rocky Mountains (Pan *et al* 2011b) due to more extensive timber harvest (Masek *et al* 2011), which might reduce the likelihood of beetle attack since beetles tend to prefer large old trees (Raffa *et al* 2008). On the other hand, land-use activities that homogenize forest structure and composition can increase the likelihood of beetle outbreaks (Raffa *et al* 2008). Future efforts are needed to reduced uncertainty in the causes, extent, and severity of bark beetle outbreaks (Meddens *et al* 2012, Gartner *et al* 2015) given that rising temperatures and local land use activities could amplify tree mortality from bark beetles over the coming century in parts of this region (Hicke *et al* 2006, Raffa *et al* 2008).

4.4. Tree mortality from harvest

Tree mortality from timber harvest was highest in Oregon and Washington and accounted for $\sim 80\%$ of $\overline{\text{MORT}}_{\text{H+B+F}}$ in these states. Much of the timber harvest in these states occurs in highly productive coastal forests, where rates of timber extraction per unit of forest area are the highest in the country (Masek *et al* 2011, Law and Waring 2015). These coastal forests were a net source of carbon to the atmosphere during the 1980s due to high rates of timber harvest, though declines in harvest following implementation of the Northwest Forest Plan in 1994 led forests on public lands to become a net carbon sink during the 2000s (Turner *et al* 2011). Forests in Oregon and northern California currently store ~ 3.2 Pg C, yet could theoretically store ~ 5.9 Pg C if stand-replacing disturbances did not occur on the landscape (Hudiburg *et al* 2009). Recent tree mortality from timber harvest far exceeded tree mortality caused by both bark beetles and fires in the Pacific Northwest, highlighting that reductions in timber harvest could help these states meet GHG emission reduction targets. Continued warming and drying could reduce the amount of tree biomass available to be harvested in the Interior West over the coming century (Williams *et al* 2012, Jiang *et al* 2013, Berner *et al* 2017), yet it is currently unclear how the net effects of ongoing climate change will affect tree biomass and resource availability in the Pacific Northwest (Hudiburg *et al* 2013, Jiang *et al* 2013, Kang *et al* 2014, McDowell *et al* 2015).

5. Conclusions

Timber harvest, bark beetles, and fires were important causes of tree mortality from 2003–2012 across forests in the western US. This was a period during which high temperatures contributed to severe drought that increased both fire and bark beetle activity relative to recent decades. Regional tree mortality from these disturbances together averaged 45.8 ± 16.0 Tg AGC yr^{-1} , with harvest accounting for a significantly larger percentage (50%) than bark beetles (32%) or fires (18%). The amount of carbon in tree aboveground biomass killed each year by these disturbances was equivalent to $\sim 18\%$ of concurrent regional carbon emissions from fossil fuel consumption (US Energy Information Administration 2015). Tree mortality from timber harvest was concentrated in the high-biomass forests of the Northwest, where it accounted for $\sim 80\%$ of the mortality caused by these three types of disturbance. Shifts in management priorities in the Northwest could reduce tree mortality and subsequent GHG emissions as a means of mitigating climate change. Bark beetles caused tree mortality widely across the region, though mortality was concentrated in the Rocky Mountains. Tree age and high stem density in these mountain forests made them susceptible to beetle attack, while rising air temperatures increased beetle populations and caused drought-induced reductions in tree defense against beetle attack. Lastly, tree mortality from fires peaked in California, where high temperatures increased fuel aridity and human activities increased fire ignitions. Tree mortality from bark beetles and fires will likely increase in parts of the regions over the coming decades as anthropogenic GHG emissions drive higher temperatures and increased risk of drought. Efforts to manage natural resources and meet GHG emission targets will all benefit from better understanding of the magnitude, location, and causes of tree mortality.

Data Availability

Our geospatial estimates of tree mortality from fires and bark beetles will be publicly archived with Oak Ridge National Laboratory at the Distributed Active Archive Center for Biogeochemical Dynamics (<https://daac.ornl.gov/>). This data set includes annual estimates of tree mortality and uncertainty from 2003 to 2012 at 1 km spatial resolution for the western US.

Acknowledgments

LTB was supported by NASA Headquarters under the NASA Earth and Space Science Fellowship Program (Grant NNX14AN65H) and by the ARCS Foundation Scholar program. BEL and JAH were supported by the USDA National Institute of Food and Agriculture

(Grant 2013–67003–20652). AJHM was supported by the Interior Northwest Climate Science Center (NW CSC) through a Cooperative Agreement (G14AP00177) from the United States Geological Survey (USGS). The contents of this article are solely the responsibility of the authors and do not necessarily represent the views of the NW CSC or the USGS. We thank the two reviewers for their helpful comments, and Mark Harmon and Ariel Muldoon for guidance on uncertainty analysis using Monte Carlo. We cite no conflicts of interest.

References

- Abatzoglou J T and Redmond K 2017 West Wide Drought Tracker, University of Idaho (www.wrcc.dri.edu/wwdt/time/)
- Abatzoglou J T and Williams A P 2016 Impact of anthropogenic climate change on wildfire across western US forests *Proc. Natl Acad. Sci.* **113** 11770–5
- Adams H D, Guardiola-Claramonte M, Barron-Gafford G A, Villegas J C, Breshears D D, Zou C B, Troch P A and Huxman T E 2009 Temperature sensitivity of drought-induced tree mortality portends increased regional die-off under global-change-type drought *Proc. Natl Acad. Sci. USA* **106** 7063–6
- Allen C D, Breshears D D and McDowell N G 2015 On underestimation of global vulnerability to tree mortality and forest die-off from hotter drought in the Anthropocene *Ecosphere* **6** 1–55
- Allen C D, Macalady A K, Chenchouni H, Bachelet D, McDowell N, Vennetier M, Kitzberger T, Rigling A, Breshears D D and Hogg E H 2010 A global overview of drought and heat-induced tree mortality reveals emerging climate change risks for forests *Forest Ecol. Manage.* **259** 660–84
- Anderegg W R, Hicke J A, Fisher R A, Allen C D, Aukema J, Bentz B, Hood S, Lichstein J W, Macalady A K and McDowell N 2015 Tree mortality from drought, insects, and their interactions in a changing climate *New Phytol.* **208** 674–83
- Anderson-Teixeira K J, Snyder P K, Twine T E, Cuadra S V, Costa M H and DeLucia E H 2012 Climate-regulation services of natural and agricultural ecoregions of the Americas *Nat. Clim. Change* **2** 177–81
- Baccini A *et al* 2012 Estimated carbon dioxide emissions from tropical deforestation improved by carbon-density maps *Nat. Clim. Change* **2** 182–5
- Balch J K, Bradley B A, Abatzoglou J T, Nagy R C, Fusco E J and Mahood A L 2017 Human-started wildfires expand the fire niche across the United States *Proc. Natl Acad. Sci.* **114** 2946–51
- Berner L T, Law B E and Hudiburg T W 2017 Water availability limits tree productivity, carbon stocks, and carbon residence time in mature forests across the western US *Biogeosciences* **14** 365–78
- Birdsey R A 1992 Carbon storage accumulation in United States forest ecosystems *General Technical Report WO-59* (Washington, DC: USDA Forest Service) 55
- Blackard J, Finco M, Helmer E, Holden G, Hoppus M, Jacobs D, Lister A, Moisen G, Nelson M and Riemann R 2008 Mapping US forest biomass using nationwide forest inventory data and moderate resolution information *Remote Sens. Environ.* **112** 1658–77
- Bonan G B 2008 Forests and climate change: forcings, feedbacks, and the climate benefits of forests *Science* **320** 1444–9
- Bond M L, Lee D E, Bradley C M and Hanson C T 2009 Influence of pre-fire tree mortality on fire severity in conifer forests of the San Bernardino Mountains, California *Open Forest Sci. J.* **2** 41–7
- Brinck K, Fischer R, Groeneveld J, Lehmann S, De Paula M D, Pütz S, Sexton J O, Song D and Huth A 2017 High resolution analysis of tropical forest fragmentation and its impact on the global carbon cycle *Nat. Commun.* **8** 14855
- Carnell R 2016 triangle: Provides the standard distribution functions for the triangle distribution *R package version 0.10* (<https://cran.r-project.org/package=triangle>)
- Cohen W B, Yang Z, Stehman S V, Schroeder T A, Bell D M, Masek J G, Huang C and Meigs G W 2016 Forest disturbance across the conterminous United States from 1985–2012: the emerging dominance of forest decline *Forest Ecol. Manage.* **360** 242–52
- Cook B I, Ault T R and Smerdon J E 2015 Unprecedented 21st century drought risk in the American Southwest and Central Plains *Sci. Adv.* **1** e1400082
- Creeden E P, Hicke J A and Buotte P C 2014 Climate, weather, and recent mountain pine beetle outbreaks in the western United States *Forest Ecol. Manage.* **312** 239–51
- Dennison P E, Brewer S C, Arnold J D and Moritz M A 2014 Large wildfire trends in the western United States, 1984–2011 *Geophys. Res. Lett.* **41** 2928–33
- Diffenbaugh N S, Swain D L and Touma D 2015 Anthropogenic warming has increased drought risk in California *Proc. Natl Acad. Sci.* **112** 3931–6
- Eidenshink J, Schwind B, Brewer K, Zhu Z, Quayle B and Howard S 2007 A project for monitoring trends in burn severity *Fire Ecol.* **3** 3–21
- FAO 2017 Forest production and trade (United Nations Food and Agriculture Organization)
- Gartner M H, Veblen T T, Leyk S and Wessman C A 2015 Detection of mountain pine beetle-killed ponderosa pine in a heterogeneous landscape using high-resolution aerial imagery *Int. J. Remote Sens.* **36** 5353–72
- Ghimire B, Williams C A, Collatz G J and Vanderhoof M 2012 Fire-induced carbon emissions and regrowth uptake in western US forests: documenting variation across forest types, fire severity, and climate regions *J. Geophys. Res. Biogeosci.* **117** G03036
- Ghimire B, Williams C A, Collatz G J, Vanderhoof M, Rogan J, Kulakowski D and Masek J G 2015 Large carbon release legacy from bark beetle outbreaks across Western United States *Glob. Change Biol.* **21** 3087–101
- Goetz S J *et al* 2012 Observations and assessment of forest carbon dynamics following disturbance in North America *J. Geophys. Res.* **117** G02022
- Gonzalez P, Battles J J, Collins B M, Robards T and Saah D S 2015 Aboveground live carbon stock changes of California wildland ecosystems, 2001–2010 *Forest Ecol. Manage.* **348** 68–77
- Harmon M E, Bond-Lamberty B, Tang J and Vargas R 2011 Heterotrophic respiration in disturbed forests: a review with examples from North America *J. Geophys. Res. Biogeosci.* **116** G00K04
- Harmon M E, Ferrell W K and Franklin J F 1990 Effects on carbon storage of conversion of old-growth forests to young forests *Science* **247** 699–702
- Harmon M E, Franklin J F, Swanson F J, Sollins P, Gregory S, Lattin J, Anderson N, Cline S, Aumen N G and Sedell J 1986 Ecology of coarse woody debris in temperate ecosystems *Adv. Ecol. Res.* **15** 133–302
- Harmon M E, Phillips D L, Battles J, Rassweiler A, Hall R and Lauenroth W 2007 *Principles and Standards for Measuring Net Primary Production in Long-Term Ecological Studies* ed T Fahey and A Knapp (Oxford: Oxford University Press) pp 238–60
- Hart S J, Schoennagel T, Veblen T T and Chapman T B 2015 Area burned in the western United States is unaffected by recent mountain pine beetle outbreaks *Proc. Natl Acad. Sci.* **112** 4375–80
- Hart S J, Veblen T T, Eisenhart K S, Jarvis D and Kulakowski D 2014 Drought induces spruce beetle (*Dendroctonus rufipennis*) outbreaks across northwestern Colorado *Ecology* **95** 930–9

- Heath L S, Anderson S M, Emery M R, Hicke J A, Littell J, Lucier A, Masek J G, Peterson D L, Pouyat R and Potter K M 2015 Indicators of climate impacts for forests: recommendations for the US National Climate Assessment indicators system *General Technical Report NRS-155* (Newtown Square, PA: USDA Forest Service) 156
- Heller M 2017 Federal fire policy may be based on faulty science *E&E News Greenwire* (www.eenews.net/greenwire/stories/1060051219/print)
- Hicke J A and Jenkins J C 2008 Mapping lodgepole pine stand structure susceptibility to mountain pine beetle attack across the western United States *Forest Ecol. Manage.* **255** 1536–47
- Hicke J A, Logan J A, Powell J and Ojima D S 2006 Changing temperatures influence suitability for modeled mountain pine beetle (*Dendroctonus ponderosae*) outbreaks in the western United States *J. Geophys. Res. Biogeosci.* **111** G02019
- Hicke J A, Meddens A J, Allen C D and Kolden C A 2013 Carbon stocks of trees killed by bark beetles and wildfire in the western United States *Environ. Res. Lett.* **8** 0350032
- Hicke J A, Meddens A J and Kolden C A 2015 Recent tree mortality in the Western United States from bark beetles and forest fires *Forest Sci.* **62** 141–53
- Hijmans R J and van Etten J 2013 *Raster: Geographic Analysis and Modeling with Raster Data* (Vienna: R Foundation for Statistical Computing)
- Homer C, Dewitz J, Fry J, Coan M, Hossain N, Larson C, Herold N, McKerrow A, VanDriel J N and Wickham J 2007 Completion of the 2001 national land cover database for the conterminous United States *Photogramm. Eng. Remote Sens.* **73** 337
- Houghton R 2013 *Global Forest Monitoring from Earth Observation* ed F Achard and M C Hansen (Boca Raton, FL: CRC Press) pp 15–39
- Huang W, Swatantran A, Johnson K, Duncanson L, Tang H, O'Neil Dunne J, Hurtt G and Dubayah R 2015 Local discrepancies in continental scale biomass maps: a case study over forested and non-forested landscapes in Maryland, USA *Carbon Balance Manage.* **10** 1–16
- Hudiburg T, Law B, Turner D P, Campbell J, Donato D and Duane M 2009 Carbon dynamics of Oregon and Northern California forests and potential land-based carbon storage *Ecol. Appl.* **19** 163–80
- Hudiburg T W, Law B E, Wirth C and Luysaert S 2011 Regional carbon dioxide implications of forest bioenergy production *Nat. Clim. Change* **1** 419–23
- Hudiburg T W, Luysaert S, Thornton P E and Law B E 2013 Interactive effects of environmental change and management strategies on regional forest carbon emissions *Environ. Sci. Technol.* **47** 13132–40
- Jiang X, Rauscher S A, Ringler T D, Lawrence D M, Williams A P, Allen C D, Steiner A L, Cai D M and McDowell N G 2013 Projected future changes in vegetation in Western North America in the twenty-first century *J. Clim.* **26** 3671–87
- Johnson E and Wittwer D 2008 Aerial detection surveys in the United States *Australian Forestry* **71** 212–5
- Kang S, Running S W, Kimball J S, Fagre D B, Michaelis A, Peterson D L, Halofsky J E and Hong S 2014 Effects of spatial and temporal climatic variability on terrestrial carbon and water fluxes in the Pacific Northwest, USA *Environ. Modell. Softw.* **51** 228–39
- Kautz M, Meddens A J, Hall R J and Arneith A 2016 Biotic disturbances in Northern Hemisphere forests—a synthesis of recent data, uncertainties and implications for forest monitoring and modelling *Glob. Ecol. Biogeogr.* **26** 533–52
- Kellendorfer J, Walker W, LaPoint E, Bishop J, Cormier T, Fiske G, Hoppus M, Kirsch K and Westfall J 2012 NACP Aboveground Biomass and Carbon Baseline Data (NBCD 2000), USA, 2000 Data set ORNL DAAC, Oak Ridge, Tennessee, USA
- Kenward A and Raja U 2013 Nearly half of all western wildfire costs go to California *Climate Central* (www.climatecentral.org/news/nearly-half-of-all-wildfire-costs-go-to-california-16406)
- Kolden C A, Smith A M and Abatzoglou J T 2015 Limitations and utilisation of monitoring trends in burn severity products for assessing wildfire severity in the USA *Int. J. Wildland Fire* **24** 1023–8
- Kunkel K E, Stevens L E, Stevens S E, Sun L, Janssen E, Wuebbles D, Redmond K T and Dobson J G 2013 Regional climate trends and scenarios for the US National Climate Assessment: Part 5 *Climate of the Southwest US* (Washington, DC: US Department of Commerce, National Oceanic and Atmospheric Administration, National Environmental Satellite, Data, and Information Service) p 87
- Kurz W A, Dymond C C, Stinson G, Rampley G J, Neilson E T, Carroll A L, Ebata T and Safranyik L 2008 Mountain pine beetle and forest carbon feedback to climate change *Nature* **452** 987–90
- Lamloom S and Savidge R 2003 A reassessment of carbon content in wood: variation within and between 41 North American species *Biomass Bioenergy* **25** 381–8
- Law B E and Waring R H 2015 Carbon implications of current and future effects of drought, fire and management on Pacific Northwest forests *Forest Ecol. Manage.* **355** 4–14
- Levy P, Hale S and Nicoll B 2004 Biomass expansion factors and root: shoot ratios for coniferous tree species in Great Britain *Forestry* **77** 421–30
- Littell J S, McKenzie D, Peterson D L and Westerling A L 2009 Climate and wildfire area burned in western US ecoprovinces, 1916–2003 *Ecol. Appl.* **19** 1003–21
- Littell J S, Peterson D L, Riley K L, Liu Y and Luce C H 2016 A review of the relationships between drought and forest fire in the United States *Glob. Change Biol.* **22** 2353–69
- Logan J A and Powell J A 2001 Ghost forests, global warming, and the mountain pine beetle (Coleoptera: Scolytidae) *Am. Entomol.* **47** 160
- Masek J G, Cohen W B, Leckie D, Wulder M A, Vargas R, de Jong B, Healey S, Law B, Birdsey R and Houghton R 2011 Recent rates of forest harvest and conversion in North America *J. Geophys. Res. Biogeosci.* **116** G00K03
- McCabe G J, Palecki M A and Betancourt J L 2004 Pacific and Atlantic Ocean influences on multidecadal drought frequency in the United States *Proc. Natl Acad. Sci.* **101** 4136–41
- McDowell N G, Williams A, Xu C, Pockman W, Dickman L, Sevanto S, Pangle R, Limousin J, Plaut J and Mackay D 2015 Multi-scale predictions of massive conifer mortality due to chronic temperature rise *Nat. Clim. Change* **6** 295–300
- Meddens A J, Hicke J A and Ferguson C A 2012 Spatiotemporal patterns of observed bark beetle-caused tree mortality in British Columbia and the western United States *Ecol. Appl.* **22** 1876–91
- Meddens A J, Hicke J A, Macalady A K, Buotte P C, Cowles T R and Allen C D 2015 Patterns and causes of observed piñon pine mortality in the southwestern United States *New Phytol.* **206** 91–7
- Meigs G W, Campbell J L, Zald H S, Bailey J D, Shaw D C and Kennedy R E 2015a Does wildfire likelihood increase following insect outbreaks in conifer forests? *Ecosphere* **6** 1–24
- Meigs G W, Kennedy R E, Gray A N and Gregory M J 2015b Spatiotemporal dynamics of recent mountain pine beetle and western spruce budworm outbreaks across the Pacific Northwest Region, USA *Forest Ecol. Manage.* **339** 71–86
- Meigs G W, Zald H S, Campbell J L, Keeton W S and Kennedy R E 2016 Do insect outbreaks reduce the severity of subsequent forest fires? *Environ. Res. Lett.* **11** 045008
- Michaletz S T, Johnson E and Tyree M 2012 Moving beyond the cambium necrosis hypothesis of post-fire tree mortality: cavitation and deformation of xylem in forest fires *New Phytol.* **194** 254–63
- Miles P K and Smith B W 2009 Specific gravity and other properties of wood and bark for 156 tree species found in north America *USDA Forest Service Northern Research Station, NSP-RP-38* 18

- Morton D, Collatz G, Wang D, Randerson J, Giglio L and Chen Y 2013 Satellite-based assessment of climate controls on US burned area *Biogeosciences* **10** 247–60
- Mote P A *et al* 2014 *Climate Change Impacts in the United States: The Third National Climate Assessment* ed J M Melillo (Washington, DC: US Global Change Research Program) pp 487–513
- Mote P W, Hamlet A F, Clark M P and Lettenmaier D P 2005 Declining mountain snowpack in Western North America *Bull. Am. Meteorol. Soc.* **86** 39–49
- Neeti N and Kennedy R 2016 Comparison of national level biomass maps for conterminous US: understanding pattern and causes of differences *Carbon Balance Manage.* **11** 1–19
- Omerik J M 1987 Ecoregions of the conterminous United States *Ann. Assoc. Am. Geogr.* **77** 118–25
- Oregon Department of Forestry 2017 Timber Harvest Data 1942–2015 Available online (<https://data.oregon.gov/Natural-Resources/Timber-Harvest-Data-1942-2015/v7yh-3r7a>) (Accessed: 14 July 2016)
- Oswalt S N, Smith W B, Miles P D and Pugh S A 2014 Forest Resources of the United States, 2012: a technical document supporting the Forest Service 2010 update of the RPA Assessment *General Technical Report WO-91* (Washington, DC: USDA Forest Service) 228
- Pacala S W, Breidenich C, Brewer P, Fung I, Gunson M, Heddle G, Law B, Marland G, Paustian K and Prather M 2010 Verifying greenhouse gas emissions: methods to support international climate agreements *Committee on Methods for Estimating Greenhouse Gas Emissions*
- Pan Y, Birdsey R A, Fang J, Houghton R, Kauppi P E, Kurz W A, Phillips O L, Shvidenko A, Lewis S L and Canadell J G 2011a A large and persistent carbon sink in the world's forests *Science* **333** 988–93
- Pan Y, Chen J M, Birdsey R, McCullough K, He L and Deng F 2011b Age structure and disturbance legacy of North American forests *Biogeosciences* **8** 715–32
- Pausas J G 2015 Bark thickness and fire regime *Funct. Ecol.* **29** 315–27
- Powell S L, Cohen W B, Kennedy R E, Healey S P and Huang C 2014 Observation of trends in biomass loss as a result of disturbance in the conterminous US: 1986–2004 *Ecosystems* **17** 142–57
- R Core Team 2015 *R: A Language and Environment for Statistical Computing* (Vienna: R Foundation for Statistical Computing)
- Raffa K F, Aukema B H, Bentz B J, Carroll A L, Hicke J A, Turner M G and Romme W H 2008 Cross-scale drivers of natural disturbances prone to anthropogenic amplification: the dynamics of bark beetle eruptions *Bioscience* **58** 501–17
- Reilly M J and Spies T A 2016 Disturbance, tree mortality, and implications for contemporary regional forest change in the Pacific Northwest *Forest Ecol. Manage.* **374** 102–10
- Rollins M G 2009 LANDFIRE: a nationally consistent vegetation, wildland fire, and fuel assessment *Int. J. Wildland Fire* **18** 235–49
- Ruefenacht B, Finco M, Nelson M, Czaplewski R, Helmer E, Blackard J, Holden G, Lister A, Salajanu D and Weyermann D 2008 Conterminous US and Alaska forest type mapping using forest inventory and analysis data *Photogramm. Eng. Remote Sens.* **74** 1379–88
- Schwalm C R, Williams C A, Schaefer K, Baldocchi D, Black T A, Goldstein A H, Law B E, Oechel W C and Scott R L 2012 Reduction in carbon uptake during turn of the century drought in western North America *Nat. Geosci.* **5** 551–6
- Smith W, Miles P, Perry C and Pugh S 2009 Forest resources of the United States 2007: A technical document supporting the Forest Service 2010 RPA assessment *General Technical Report WO-78* (Washington, DC: USDA Forest Service) 349
- Smith W B 2002 Forest inventory and analysis: a national inventory and monitoring program *Environ. Pollut.* **116** S233–42
- Spracklen D V, Mickley L J, Logan J A, Hudman R C, Yevich R, Flannigan M D and Westerling A L 2009 Impacts of climate change from 2000 to 2050 on wildfire activity and carbonaceous aerosol concentrations in the western United States *J. Geophys. Res. Atmos.* **114** D20301
- Turner D P, Ritts W D, Yang Z, Kennedy R E, Cohen W B, Duane M V, Thornton P E and Law B E 2011 Decadal trends in net ecosystem production and net ecosystem carbon balance for a regional socioecological system *Forest Ecol. Manage.* **262** 1318–25
- US Energy Information Administration 2015 *Energy-related Carbon Dioxide Emissions at the State Level, 2000–2013* (Washington, DC: US Department of Energy)
- van Mantgem P J, Nesmith J C, Keifer M, Knapp E E, Flint A and Flint L 2013 Climatic stress increases forest fire severity across the western United States *Ecology letters* **16** 1151–6
- Walsh J *et al* 2014 *Climate Change Impacts in the United States: The Third National Climate Assessment* ed J M Melillo *et al* (US Global Change Research Program) pp 19–67
- Waring R, Coops N, Fan W and Nightingale J 2006 MODIS enhanced vegetation index predicts tree species richness across forested ecoregions in the contiguous USA *Remote Sens. Environ.* **103** 218–26
- Weedon J T, Cornwell W K, Cornelissen J H, Zanne A E, Wirth C and Coomes D A 2009 Global meta-analysis of wood decomposition rates: a role for trait variation among tree species? *Ecol. Lett.* **12** 45–56
- Westerling A L, Hidalgo H G, Cayan D R and Swetnam T W 2006 Warming and earlier spring increase western US forest wildfire activity *Science* **313** 940–3
- Wickham H and Francois R 2015 dplyr: A Grammar of Data Manipulation *R package version 0.4.2* (<http://CRAN.R-project.org/package=dplyr>)
- Williams A P, Allen C D, Macalady A K, Griffin D, Woodhouse C A, Meko D M, Swetnam T W, Rauscher S A, Seager R and Grissino-Mayer H D 2012 Temperature as a potent driver of regional forest drought stress and tree mortality *Nat. Clim. Change* **3** 292–7
- Williams A P, Seager R, Macalady A K, Berkelhammer M, Crimmins M A, Swetnam T W, Trugman A T, Bunnings N, Noone D and McDowell N G 2014 Correlations between components of the water balance and burned area reveal new insights for predicting forest fire area in the southwest United States *Int. J. Wildland Fire* **24** 14–26
- Williams C A, Gu H, MacLean R, Masek J G and Collatz G J 2016 Disturbance and the carbon balance of US forests: a quantitative review of impacts from harvests, fires, insects, and droughts *Glob. Planet. Chang.* **143** 66–80
- Wilson B T, Woodall C and Griffith D 2013 Imputing forest carbon stock estimates from inventory plots to a nationally continuous coverage *Carbon Balance Manage.* **8** 1–15