

Figure 1. Map showing the location of Colorado Roadless Areas on the Rio Grande National Forest in relationship to Colorado Roadless Areas on the adjacent National Forests, adjacent/proximal BLM lands with wilderness characteristics, and Wilderness areas.

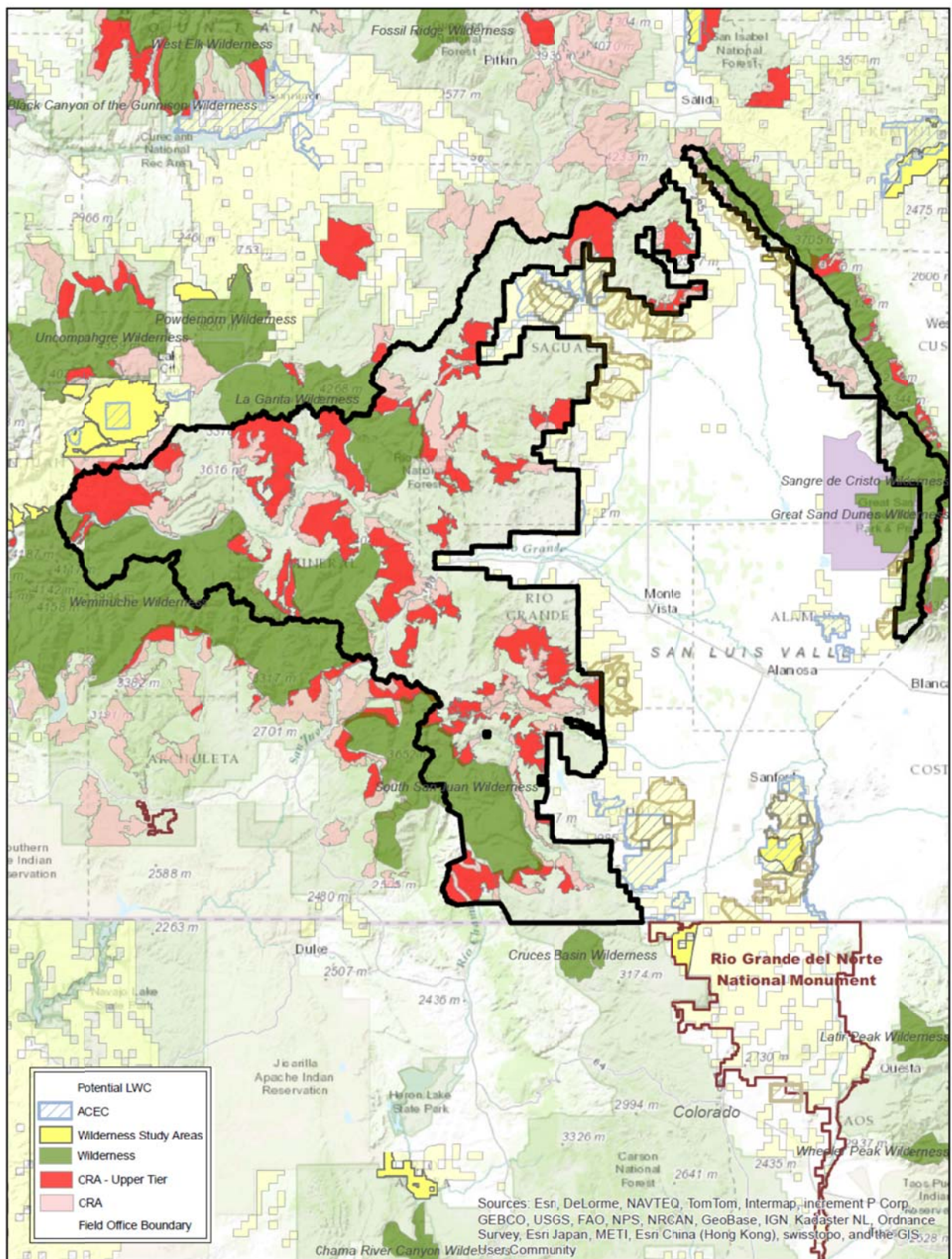
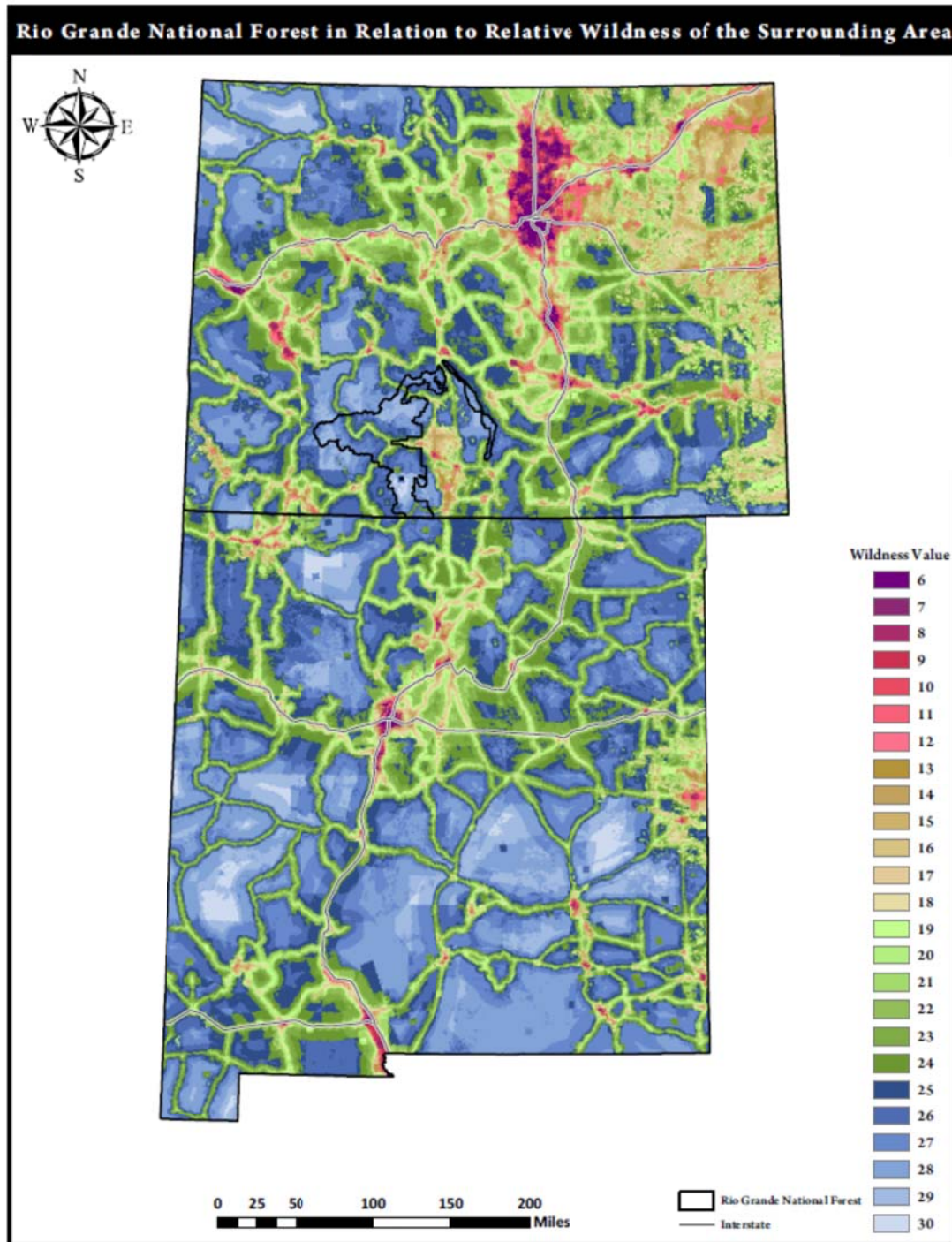


Figure 2. Wildness of the Rio Grande Headwaters as Mapped by Aplet et al. (2000)

The following are maps of the Rio Grande Headwaters Region depicting wildness values as calculated by Aplet et al.(2000). The first map is at a smaller scale and shows the Rio Grande National Forest units in relationship to protected lands. The second map is at a larger scale and shows more clearly the wildness values of the Rio Grande National Forest mountain units.



Rio Grande National Forest in Relation to Relative Wildness of the Surrounding Area

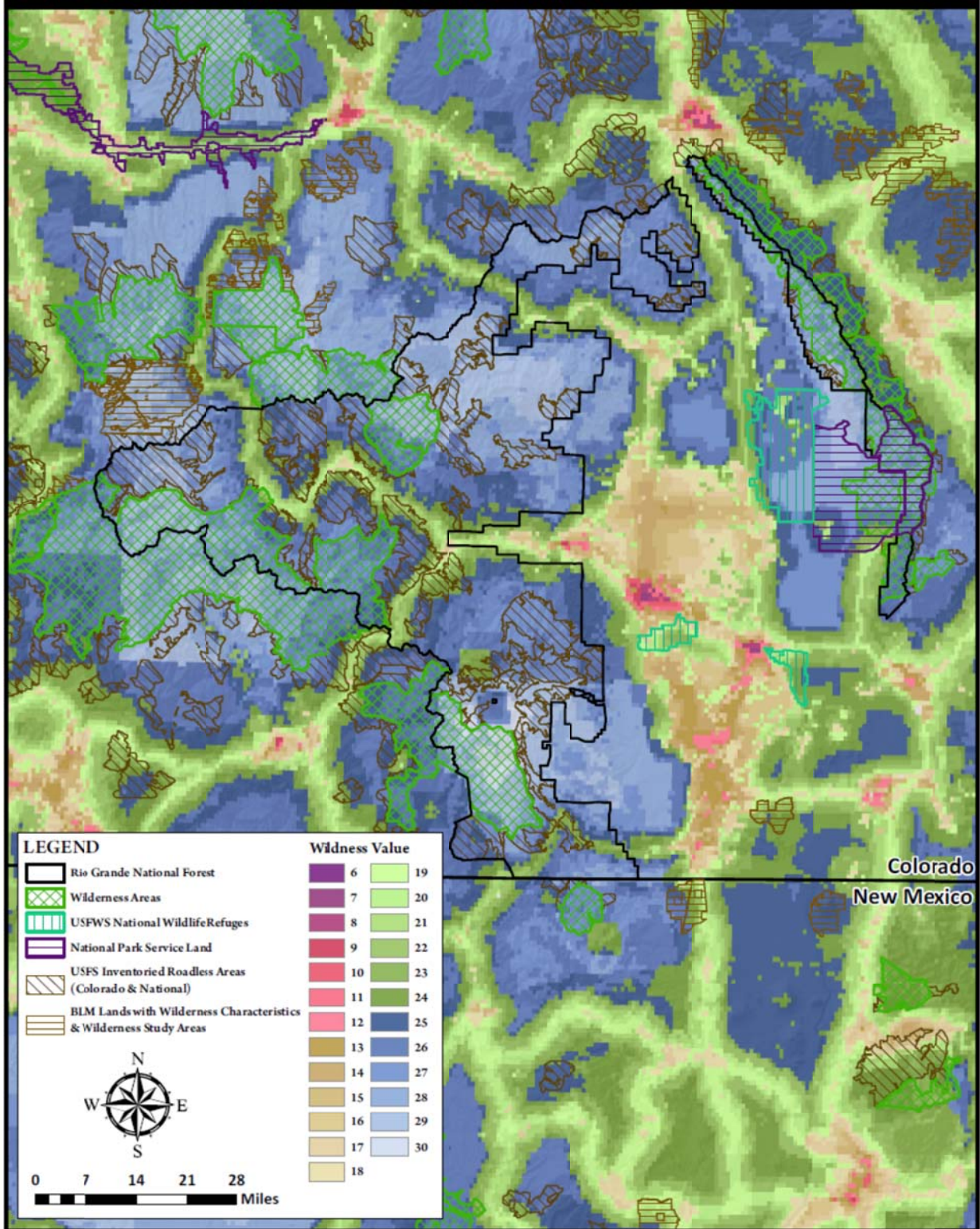


Figure 3. Watershed condition resulting from impacts from roads and trails in Colorado National Forests based on the Forest Service's Watershed Condition Framework roads/trails indicator score.

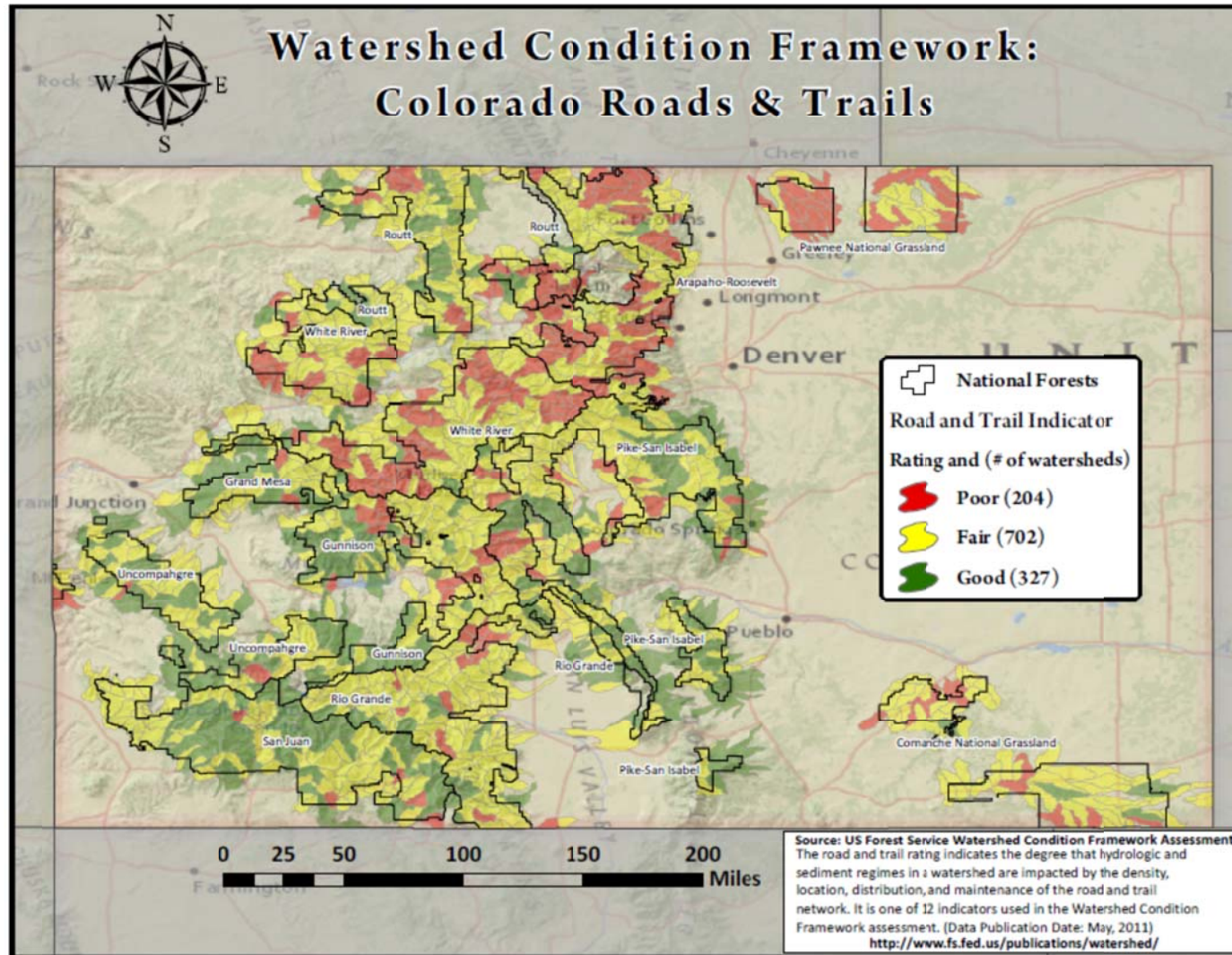


Table 1: Rio Grande National Forest Administrative Disparities at Boundaries with other National Forests

Designated Area on Adjacent National Forest	Length of Boundary Disparity	Rio Grande National Forest Current Management at Boundary
PSINF Porphyry Peak roadless	2.1 miles	RGNF general forest products and dispersed recreation
PSINF Starvation Creek roadless	3.84 miles	RGNF general forest products and dispersed recreation
GMUG Cochetopa Hills roadless	15 miles	RGNF general forest products
GMUG Cochetopa roadless (upper tier 6618 acres)	Approx. 2 miles	RGNF Grassland Resource Production
GMUG La Garita Wilderness	Approx. 5 miles	RGNF General Forest and Intermingled Rangelands, Grassland Resource Production and Forest products
GMUG La Garita Wilderness	2.6 miles	RGNF Lake Fork roadless
GMUG La Garita Wilderness	5.6 miles	RGNF Wasson Park roadless
GMUG La Garita Wilderness	5.6 miles	RGNF General Forest and Intermingled Rangelands
GMUG La Garita Wilderness	9 miles	RGNF Bristol Head roadless
GMUG Carson roadless	2.53 E side 0.94 W side	RGNF dispersed recreation on sides of K/BBuck/Ruby Roadless
GMUG Cataract roadless	2.4 miles	RGNF dispersed recreation on NE side of Pole Mtn/Finger Mesa roadless
SJNF Weminuche Wilderness (at Hunchback Pass)	3.9 miles	RGNF dispersed recreation
SJNF Weminuche Wilderness (at Piedra Pass)	0.36 miles	RGNF Copper Mountain / Sulphur roadless
SJNF Weminuche Wilderness (at Piedra Pass)	0.5 miles	RGNF backcountry and dispersed recreation
SJNF Weminuche Wilderness (at Piedra Pass)	1 mile	RGNF Red Mountain roadless
SJNF Treasure Mountain roadless (upper tier)	11.58 miles	RGNF Forest Products and some dispersed recreation
Carson NF Cruces Basin Oser Mesa roadless	Approx. 5 miles	RGNF Grassland Resource Protection and Designated/Eligible Scenic Rivers (Rio de los Pinos)

GMUG - Grand Mesa-Uncompahgre-Gunnison National Forests

PSINF – Pike-San Isabel National Forest

RGNF – Rio Grande National Forest

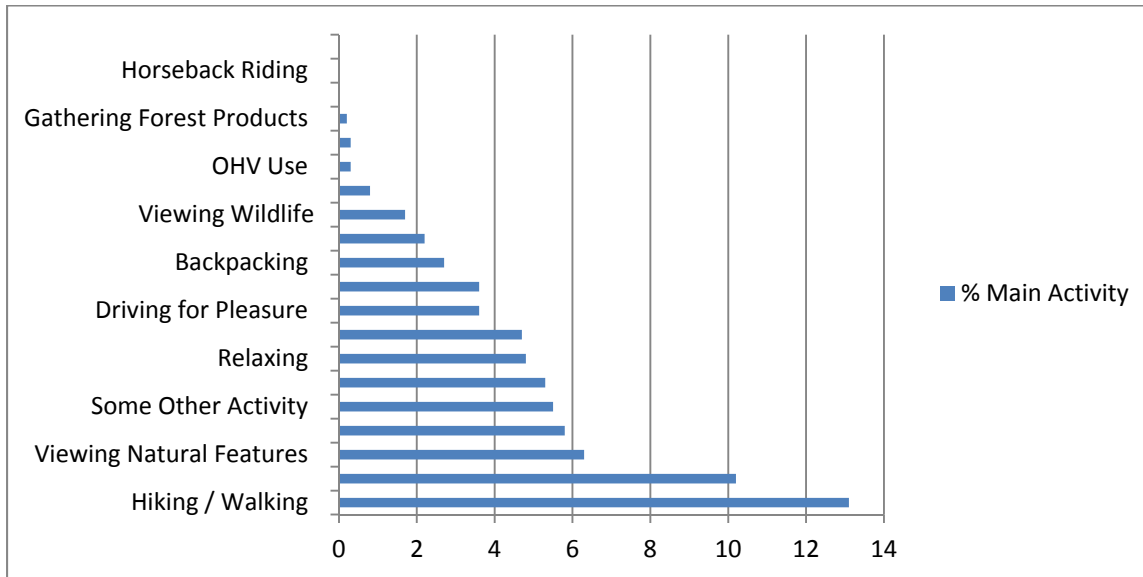
SJNF – San Juan National Forest

Total of approximately 80 miles of RGNF boundary adjacent to inventoried roadless/Wilderness under an adjacent jurisdiction, where the adjacent administrative designation is at a higher level of protection than the RGNF designation.

Table 2. Estimated number of people participating in selected activities and total annual days of participation in the United States, 1994 to 2008. After Cordell (2008a).

	1994-1995		1999-2001		2005-2008		% change from 1999-2001 to 2005-2008		% change from 1994-1995 to 2005-2008	
	Millions of Participants Annually	Billions of Days Annually	Millions of Participants Annually	Billions of Days Annually	Millions of Participants Annually	Billions of Days Annually	Millions of Participants Annually	Billions of Days Annually	Millions of Participants Annually	Billions of Days Annually
Nature-based Outdoor Recreation Activity										
Viewing Wildlife	62.8	2.3	94.6	3.6	114.8	5.3	21.4	47.2	82.8	130.4
Viewing Birds	54.3	4.8	68	5.8	81.1	8	19.3	37.9	49.4	66.7
Visit a Wilderness or Primitive Area	n/a	n/a	68.5	0.98	70.6	1.1	3.1	12.2	n/a	n/a
Primitive Camping	28.1	0.26	34	0.28	33.3	0.34	-2.1	21.4	18.5	30.8
Backpacking	15.2	0.13	22.3	0.22	22.1	0.28	-0.9	27.3	45.4	115.4

Table 3. Dispersed Recreation Participation, Rio Grande National Forest, FY 2005



Activity	% Participation	% Main Activity	Average Hours Doing Main Activity
Hiking / Walking	35.9	13.1	8.3
Cross-country Skiing	12.4	10.2	3.4
Viewing Natural Features	49.5	6.3	3.4
Fishing	13.6	5.8	11.7
Some Other Activity	9.8	5.5	3.9
Snowmobiling	5.7	5.3	4.4
Relaxing	39.6	4.8	20.7
Hunting	6.5	4.7	35.2
Driving for Pleasure	17.2	3.6	6
Motorized Trail Activity	7.6	3.6	4.9
Backpacking	8.7	2.7	45.3
Primitive Camping	7.4	2.2	73
Viewing Wildlife	35	1.7	4.9
Picnicking	7.8	0.8	36
OHV Use	4.9	0.3	35.2
Visiting Historic Sites	4.6	0.3	5.9
Gathering Forest Products	4.9	0.2	1.5
Nature Study	6.6	0	1.1
Horseback Riding	3.6	0	0
Bicycling	0.7	0	1

After USDA Forest Service, 2005. National Visitor Use Monitoring Results Master Report, Page 21. Available at <http://apps.fs.usda.gov/nrm/nvum/results/A02009.aspx/Round2>.

Table 4. Colorado Natural Heritage Program Potential Conservation Areas Ranked High or Very High on the Rio Grande National Forest, 2014.

Name of CNHP area ⁱ	Biodiversity Significance ⁱⁱ	Ranger District	Element Type	Intersects Wilderness	Intersects Colorado Roadless Area	Notes	Acres
Adams Fork of Conejos River	High	Conejos Peak	Zoology	South San Juan	Gold Creek / Cascade Creek	300 acres outside of SSJ Wilderness	1,600
Alamosa River at Government Park	High	Conejos Peak	Ecology	no	part		6,700
Cascade Creek at Osier	High	Conejos Peak	Ecology	no	no		800
Conejos River at Menkhaven Ranch	High	Conejos Peak	Ecology	no	no		220
Conejos River at Spectacle Lake	High	Conejos Peak	Ecology	slight	Spectacle Lake		170
Hicks Canyon	High	Conejos Peak	Botany	no	no		3,390
Hot Creek	Very High	Conejos Peak	Multi-Types	no	no	half on state land	2,800
Lake Fork	High	Conejos Peak	Ecology	no	no		980
Ojito Creek Uplands	High	Conejos Peak	Botany	no	no		140
Osier Creek	High	Conejos Peak	Zoology	no	no		1,320
Rio Chama	High	Conejos Peak	Ecology	no	Chama Basin		190
Rito Hondo Creek	High	Conejos Peak	Botany	no	no		2,340
South Fork of the Conejos River and Hansen Creek	High	Conejos Peak	Ecology	South San Juan	no		4,970
Southwest Cumbres Pass	High	Conejos Peak	Zoology	no	no		1,220
Terrace Reservoir North	High	Conejos Peak	Botany	no	no		1,770
Zapata Falls	High	Conejos Peak	Ecology	Sangre de Cristo	no	most on wilderness or state	640
Grayback Mountain	High	Conejos Peak/Divide	Botany	no	no		930
Antelope Park	High	Divide	Botany	slight	slight	much on private	11,980
Bellows Creek	Very High	Divide	Botany	La Garita	slight	some on private	9,580
Bennett Creek	High	Divide	Ecology	no	Bristol Head		

South							1,000
Cedar Spring Uplands	High	Divide	Ecology	no	no		1,570
Deep Creek Uplands West	Very High	Divide	Botany	no	all in Snowshoe Mtn		420
Elephant Rocks	High	Divide	Botany	no	no		16,100
Fivemile Park	High	Divide	Botany	no	no		70
Goose Creek-Mineral County	High	Divide	Botany	slight	no		1,560
Groundhog Park	Very High	Divide	Zoology	no	slight		3,580
Half Peak	Outstanding	Divide	Multi-Types	no	Pole Mountain / Finger Mesa	half in GMUG roadless	520
Haven of the Reflected Moonwort	High	Divide	Botany	Weminuche	part on SJNF		1,600
Highway Spring	High	Divide	Ecology	no	no		310
Jumper and Trout Creeks	High	Divide	Zoology	Weminuche	part		52,500
Kite Lake	High	Divide	Botany	slight	no		300
Miners Creek	Very High	Divide	Botany	no	Bristol Head		1,680
North Clear Creek Falls	High	Divide	Botany	no	some		2,710
North Creede	Very High	Divide	Botany	no	no		1,480
Park Creek at Summit Pass	High	Divide	Botany	no	no		60
Pole Creek	High	Divide	Ecology	no	part		1,180
Rat Creek Pond	Very High	Divide	Botany	no	no		40
Rio Grande at Pole Creek Mountain	High	Divide	Botany	Weminuche	some		620
Rio Grande Pyramid	Very High	Divide	Zoology	Weminuche	no	most in wilderness	670
San Francisco Lakes	High	Divide	Zoology	no	part		3,430
Sheep Mountain in San Juans	Very High	Divide	Botany	no	Pole Mountain / Finger Mesa		1,440
Six Mile Flats	High	Divide	Multi-Types	no	Snowshoe Mountain	much on private	2,670
Squaw Creek at Chief Mountain	High	Divide	Ecology	Weminuche	no	All in wilderness	1,380

Stony Pass	Very High	Divide	Botany	Weminuche	no	much on BLM	120
Summit Pass	High	Divide	Botany	no	part on SJNF	most on SJNF	190
Weminuche Creek at Rio Grande Reservoir	High	Divide	Botany	Weminuche	no	Almost all in wilderness	180
West Alder Creek	High	Divide	Ecology	no	no		190
Carnero Creek	High	Saguache	Zoology	no	some		20,620
Cedar Canyon	Very high	Saguache	Ecology	no	no	land added to forest after 96 plan	260
Cotton Creek	High	Saguache	Zoology	Sangre de Cristo	Cotton Creek	most in SDC Wild. Lower 275 acres	2,110
Cottonwood Creek-Western Sangres	Very High	Saguache	Ecology	some	no	land added to forest after 96 plan	970
Deadman Creek-Western Sangres	Very High	Saguache	Botany	Sangre de Cristo	no	upper is RNA. Lower land added to forest after 96 plan	3,670
Decker Creek	High	Saguache	Zoology	some	part	much on private	20,910
Dimick Gulch	Very High	Saguache	Ecology	some	Crestone (~50%)		1,750
Ford Creek	High	Saguache		no			3,050
Head of Spanish Creek	high	Saguache	Botany	no	no	land added to forest after 96 plan	
Houselog Creek	High	Saguache	Ecology	no	no		580
Kelly Creek	High	Saguache	Ecology	no	Elkhorn Peak		2,010
Lake Fork of North Crestone Creek	High	Saguache	Botany	Sangre de Cristo	no	almost all in wilderness	1,840
Luder Creek	High	Saguache	Ecology	no	slight		1,540
Milwaukee Peak	High	Saguache	Botany	Sangre de Cristo	no	all in wilderness	90
Rito Alto Peak	High	Saguache	Ecology	no	no	only upper 185 acres on RGNF	3,000
Saguache Creek	High	Saguache	Botany	La Garita	some		

							12,060
Sangres Alluvial Fan	High	Saguache	Ecology	no	slight		3,730
Slaughterhouse Creek	High	Saguache	Ecology	no	no		130
South Crestone Creek	High	Saguache	Ecology	Sangre de Cristo	no	part in wild	860
Spanish Creek	Very high	Saguache	Ecology	no	no	land added to forest after 96 plan	800
Stout Creek	High	Saguache	Multi-Types	Sangre de Cristo	some	most in wilderness or private	2,860
Trickle Mountain	Very High	Saguache	Ecology	no	no	Most on BLM	30,500
Valley View	High	Saguache	Ecology	Sangre de Cristo	part	2/3 in SDC Wilderness	710
Willow Creek- Western Sangres	High	Saguache	Ecology	Sangre de Cristo	no	land added to forest after 96 plan	1,120

ⁱ Descriptions of the individual Potential Conservation Areas are available on Colorado Natural Heritage Program's website http://www.cnhp.colostate.edu/download/gis/pca_reports.asp.

ⁱⁱ CNHP uses element and element occurrence ranks to assess the overall biological diversity significance of a PCA, which may include one or many element occurrences. Based on these ranks, each PCA is assigned a biological diversity rank (or B-rank). The PCAs on the RGNF are B2 or B3.

B2 Very High Significance:

B- or C-ranked occurrence of a G1 element

A- or B-ranked occurrence of a G2 element

One of the most outstanding (for example, among the five best) occurrences rangewide (at least A or B-ranked) of a G3 element

Concentration of A- or B-ranked G3 elements (four or more)

Concentration of C-ranked G2 elements (four or more)

B3 High Significance:

C-ranked occurrence of a G2 element

A- or B-ranked occurrence of a G3 element

D-ranked occurrence of a G1 element (if best available occurrence)

Up to five of the best occurrences of a G4 or G5 community (at least A- or B-ranked) in an ecoregion (requires consultation with other experts)