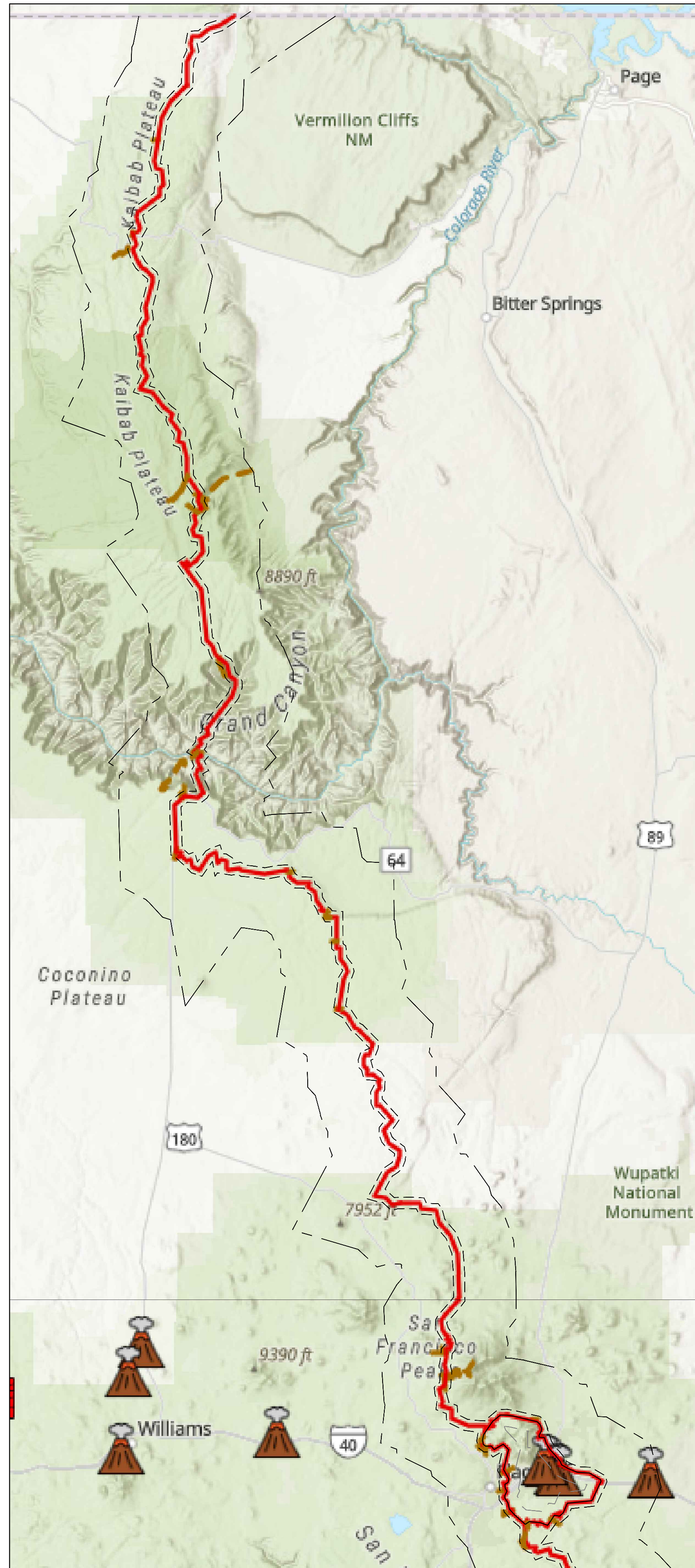


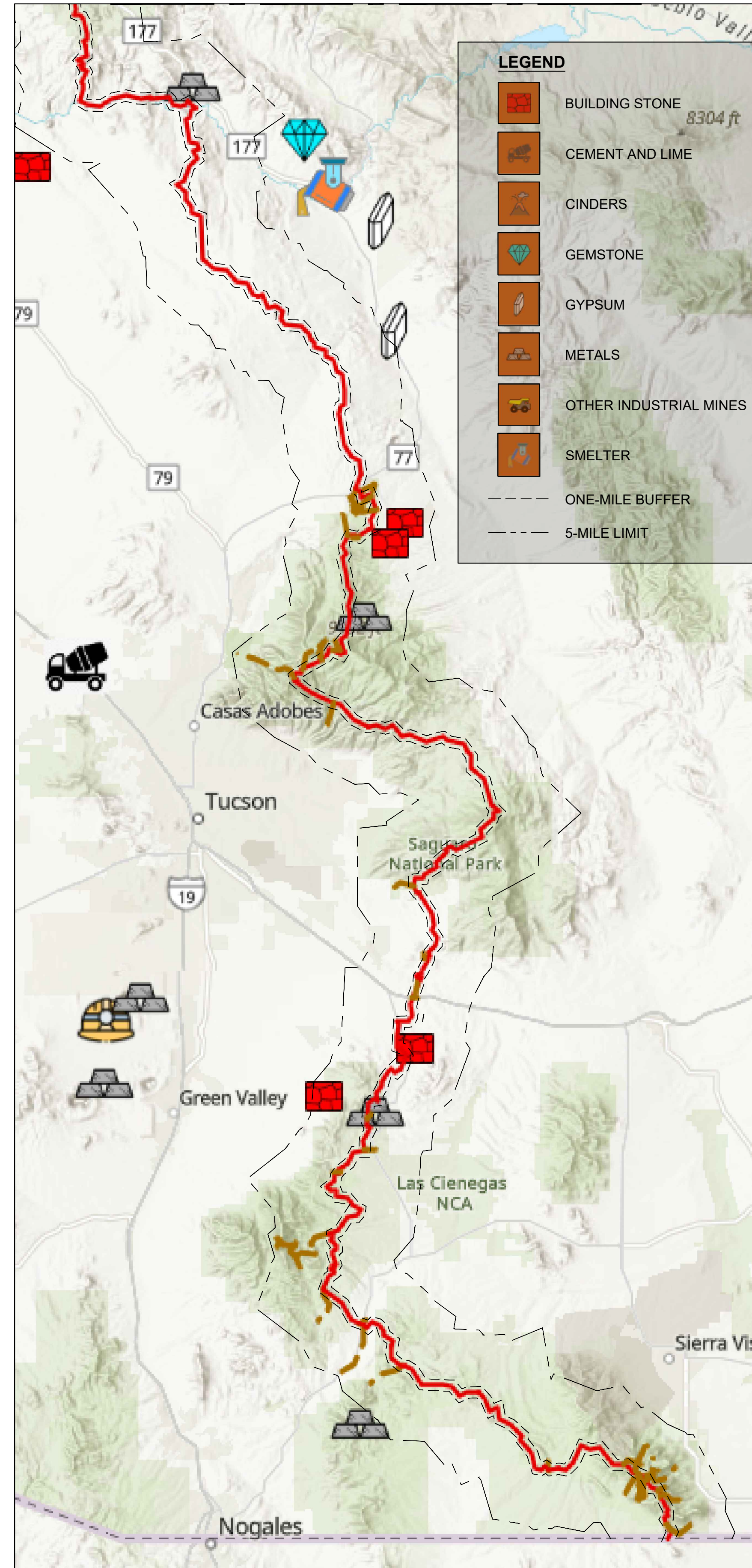
LANGHAM, CHRISTOPHER, 2/22/2024 2:28 PM, Layout: LAYOUT1, C:\USERS\LANGHAM\ONE DRIVE - HALLEY ALDRICH\COMDESKTOP\AAAA\_ALL\DWG\FIG-1\_ACTIVE-MINE-EXHIBIT.DWG







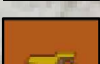
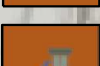
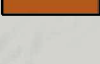
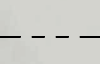
MATCHLINE SEE MIDDLE TOP



MATCHLINE SEE RIGHT TOP



**LEGEND**

-  BUILDING STONE 8304 ft
-  CEMENT AND LIME
-  CINDERS
-  GEMSTONE
-  GYPSUM
-  METALS
-  OTHER INDUSTRIAL MINES
-  SMELTER
-  ONE-MILE BUFFER
-  5-MILE LIMIT

Project No.:	-
Scale:	AS SHOWN
Date:	MARCH 2024
Drawn By:	H&A
Designed By:	H&A
Checked By:	H&A
Approved By:	H&A
Stamp:	


Rev.	Description	By	Date

ACTIVE MINES IN PROXIMITY TO ANST MANAGEMENT CORRIDOR