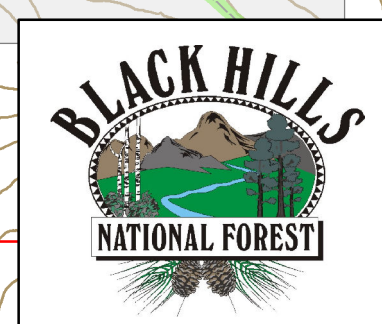


- Sale Area Boundary, B1.1
- Cutting Unit Boundary, B1.1
- Cutting Unit Number, B1.1
- Overstory Removal, 9" Minimum DBH, B2.33
- Blue Cut Tree Marking, B2.35, C2.357#
- Pink Leave Tree Marking, B2.35, C2.356#
- Whole Tree Yarding Not Required, C6.7#
- Whole Tree Yarding Required, C6.7#
- Anticipated Landing Locations
- Anticipated Skid Directions
- Temporary Road, B6.63
- Existing County Road, B5.12
- Forest System Road, B5.2
- Specified Road Reconstruction, A7, B5.2
- Forest System Road Use Restricted, C5.12#
- Forest System Road To Be Closed, C5.41#
- Road Number
- GUDAT County Road
- Other Existing Road

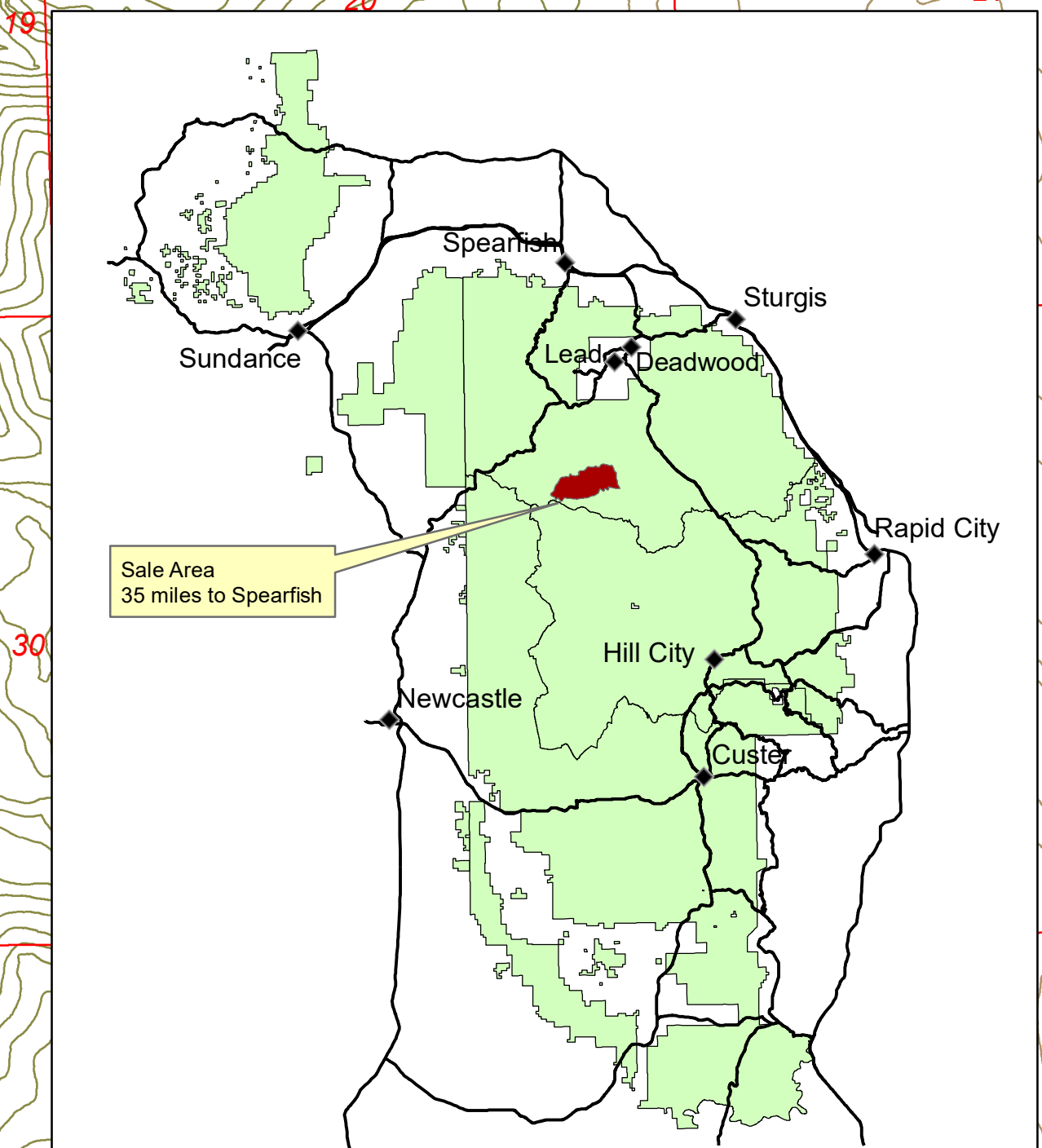
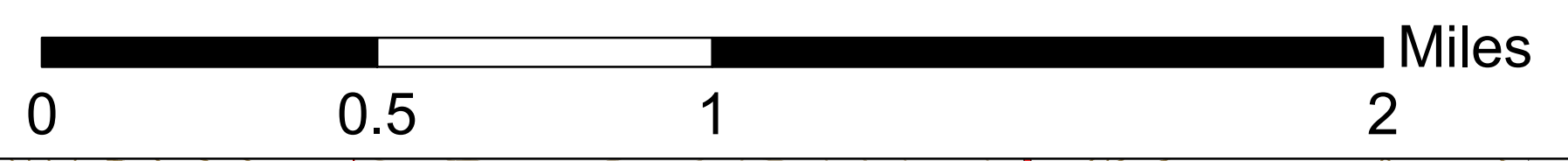
**Protect Improvements - Resources**

- Area To Protect, B6.24, C6.24#
- Area To Protect, B6.24
- Protect Wetlands, B6.62, C6.62#
- Protect Wetlands, B6.62
- Protect Survey Monument, B6.23
- Protect Pipeline Feature, B6.221
- Protect Spring, B6.62
- Protect Water Development, B6.22, B6.221
- Protect Cattle Guard, B6.22
- Protect Gate, B6.22
- Protect Pipeline, B6.221
- Protect Stream Course, B6.5
- Protect Fence, B6.22
- Protect Overhead Utility Line, B6.221
- Protect Underground Utility Line, Locator May Be Needed, B6.221
- Protect Snowmobile Trail, B6.22
- Ephemeral Stream
- Raptor Timing Restriction
- Marten Corridor
- Montane Grasslands
- Severe Slope Stability Rating
- Private/ Other Ownership

L. Zahor  
Feb 2020



**Iceman Timber Sale  
Logging Plan Map  
Northern Hills Ranger District  
Black Hills National Forest**



**TBC**  
Forest System Roads  
To Be Closed, C5.41#  
231.5J  
206.2D  
206.2G  
234.1  
206.2H  
206.2A

