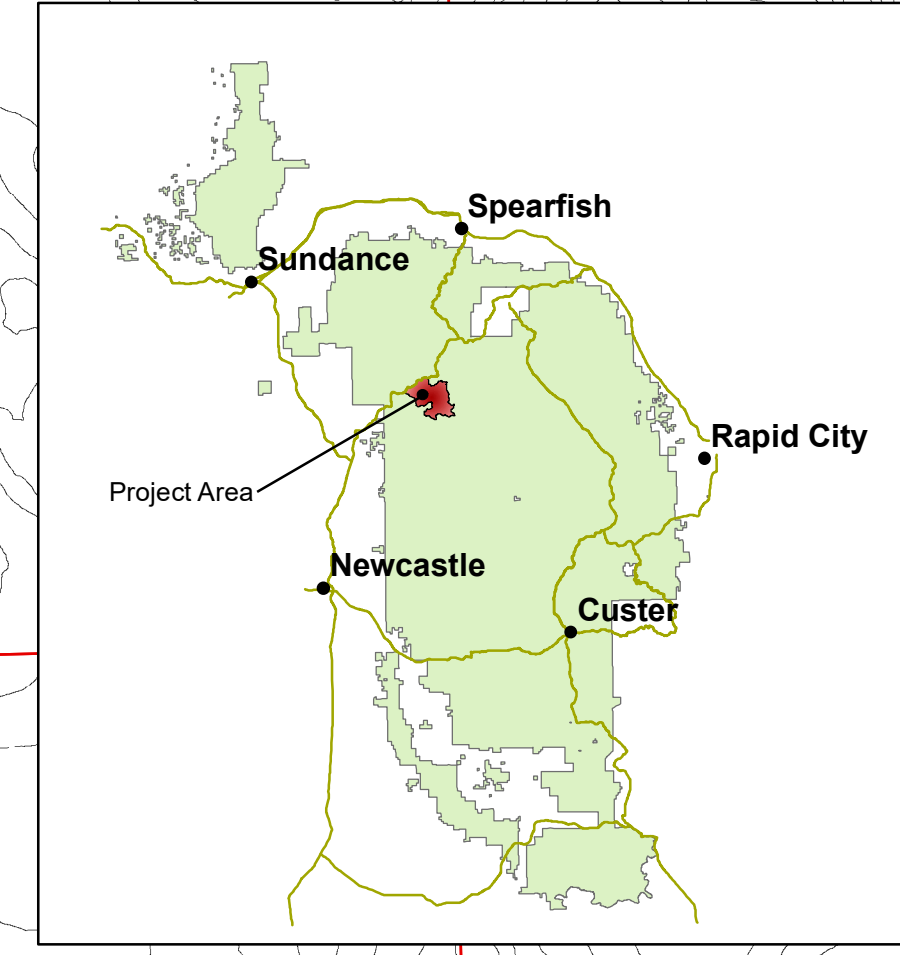




Viper Timber Sale
 Sale Area Map
 Black Hills National Forest
 Northern Hills Ranger District

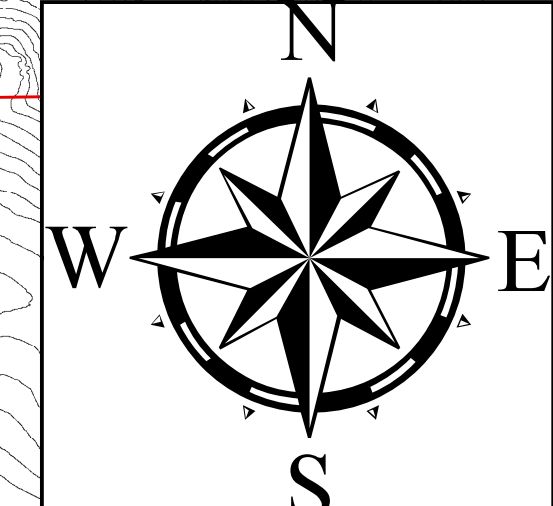
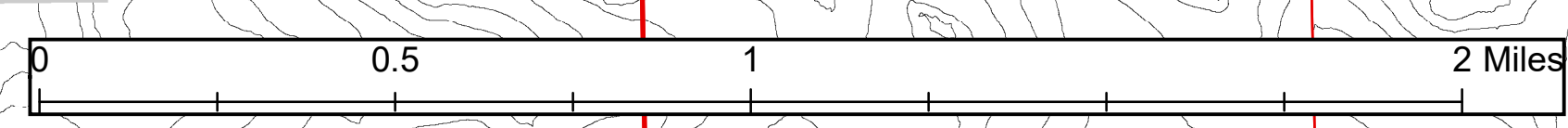


C5.12# USE OF ROADS BY PURCHASER				
Restricted Road List				
Road Number	From	To	Description of Restrictions	Designation
117.1	Jct. 231.5	Jct. 117.6B	December 1 - March 31 Snowmobile Trail	R
117.6B	Jct. 117.1	EOR	December 1 - March 31 Snowmobile Trail	R
117.7	SW corner unit 6	Jct. 231.5	December 1 - March 31 Snowmobile Trail	R
117.7J	Gate	EOR	December 1 - March 31 Snowmobile Trail	R
189.4B	Jct. 117.6B	EOR	December 1 - March 31 Snowmobile Trail	R
209	Jct. 231.5	Jct. 209.3C	December 1 - March 31 Snowmobile Trail	R
231.5	Jct. 117.7	EOR	December 1 - March 31 Snowmobile Trail	R
554.1	Jct. 231.5	Jct. 554.1B	December 1 - March 31 Snowmobile Trail	R
554.1B	Jct. 554.1	SW corner unit 39 North to gate	December 1 - March 31 Snowmobile Trail	R
232.1	Jct. 232.2A		Yearround	P

Only P: Prohibited Roads are symbolized on map

C5.41# - CLOSURE TO USE BY OTHERS.	
Forest System Roads To Be Closed, TBC	
Road Number	To Be Closed
117.7J	TBC
209.3C	TBC
554.1B	TBC
232.1	TBC
231.5N	TBC
231.5Q	TBC

- | | | |
|---|---|---|
| <ul style="list-style-type: none"> --- Sale Area Boundary, B1.1 --- Cutting Unit Boundary, B1.1 --- Private/Other Ownership --- Prohibited Road Use, C5.12# --- US Highway --- Forest System Roads, B5.12 --- Specified Road Reconstruction, A7, B5.2 --- Road Number | <ul style="list-style-type: none"> ② Cutting Unit #, B1.1 OR Overstory Removal - Conifers ≥ 9 in. DBH - B2.33 CTM-G Green Cut Tree Marking - B2.35, C2.357# CTM-B Blue Cut Tree Marking - B2.35, C2.357# CTM-O Orange Leave Tree Marking - B2.35, C2.356# WTRN Whole Tree Yarding Not Required - C6.7# WTR Whole Tree Yarding Required - C6.7# Track Mounted Equipment Required, C6.42# Clayton II Pit | <p>Protect Improvements-Resources</p> <ul style="list-style-type: none"> Protect Gates, B6.22 Protect Spring, B6.62 Protect Fence, B6.22 Protect Stream Course, B6.5 Protect Cattleguard, B6.22 Area to Protect, B6.24, C6.24# Area to Protect, B6.24 Protect Water Development, B6.62 Protect Wetland, B6.62 Protect Survey Monument, B6.23 Protect Underground Utility Line, B6.221 Protect Overhead Utility Line, B6.221 Protect Range Pipeline, B6.22 Protect Snowmobile Trails, B6.22 |
|---|---|---|



Prepared By: Cassidy Burnett February 2021