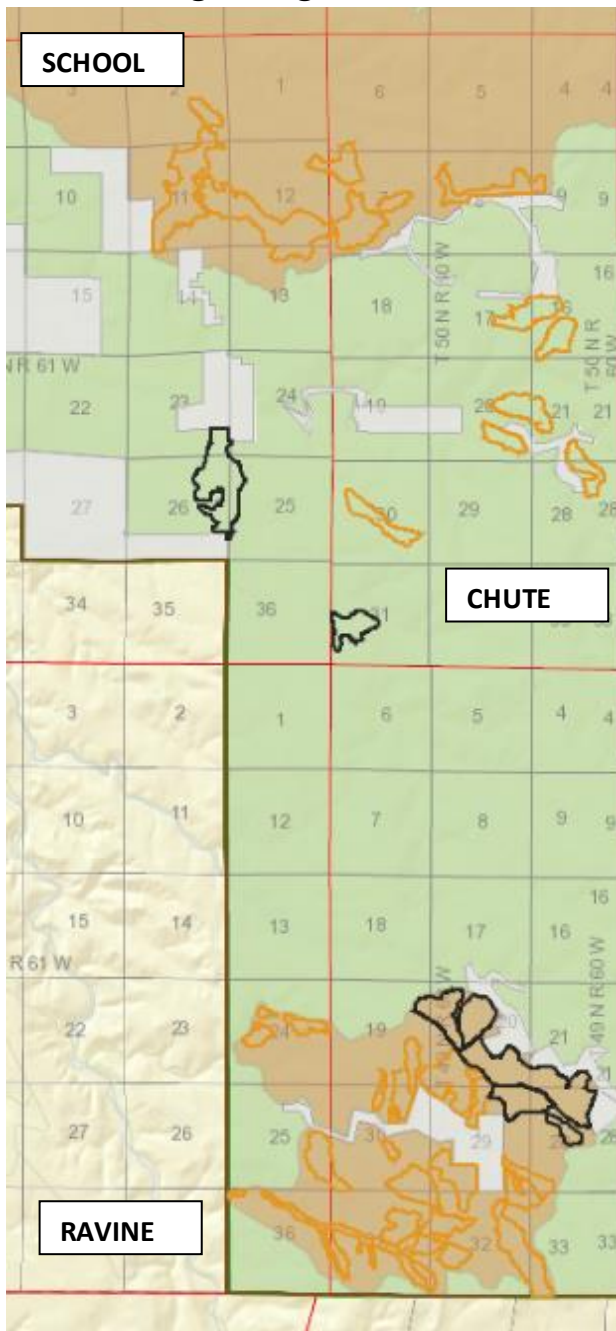


BLACK HILLS RESILIENT LANDSCAPES PROJECT:

Unauthorized, but sold timber units that may not yet be cut

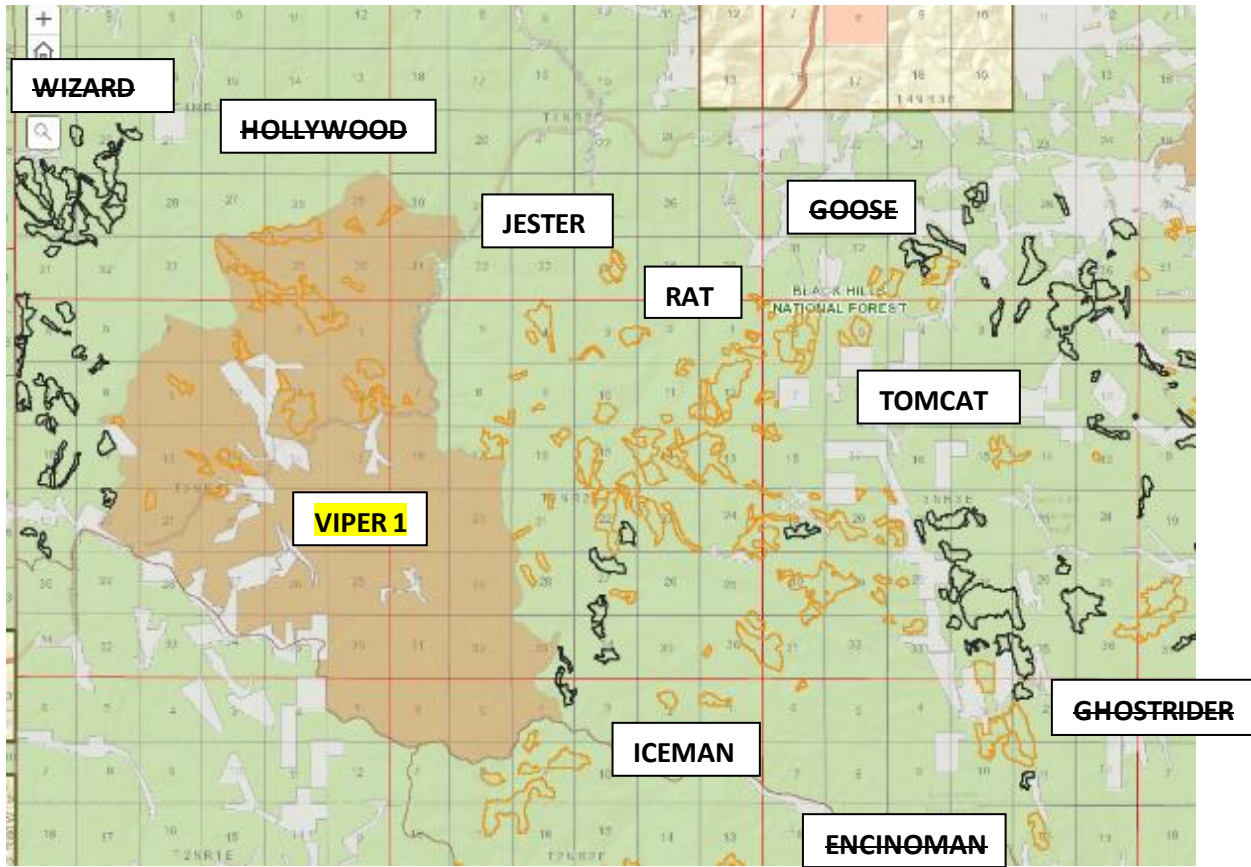
Since the Record of Decision, the Black Hills Resilient Landscapes Project implementation has included sales of many cutting units that are not disclosed to the public as such in the NEPA. A review of cutting units in sales that have been sold, or are about to be sold, shows there are likely units not designated as Potential Commercial Treatment Areas (PCTAs) that have been sold, but not cut. The tables below were developed by comparing BHRL NEPA maps with the implementation map found at [Black Hills Resilient Landscapes Project Implementation \(arcgis.com\)](https://arcgis.com) **LAST ACCESSED ON 09-06-2021**

Bearlodge Ranger District:

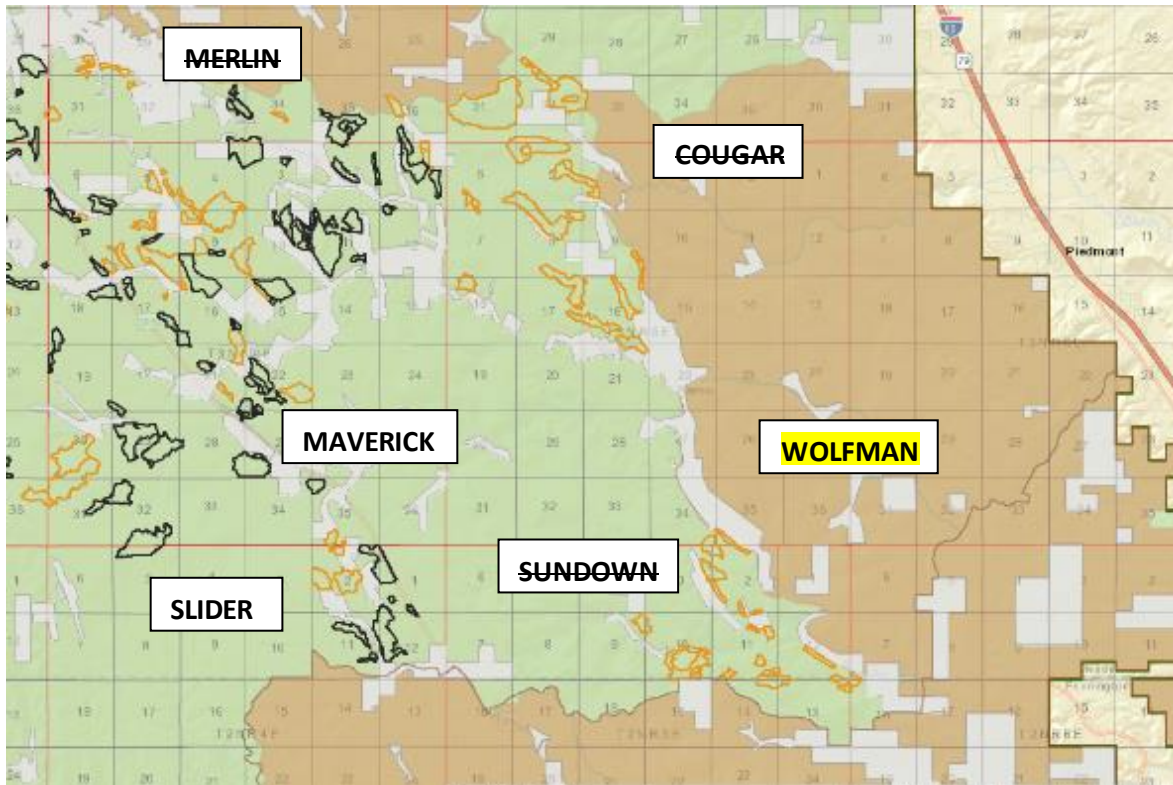


BEARLODGE DISTRICT				
Sale name	Sold	Non-PCTA units	acres	NOTES
SCHOOL	2021-03-22	1	54	Overstory Removal Cut (from advanced regeneration) (EA/RH/FH)
		7	30	Overstory Removal Cut (from advanced regeneration) (EA/RH/FH)
		8	24	Overstory Removal Cut (from advanced regeneration) (EA/RH/FH)
RAVINE	2021-01-11	5	57	Harvest Without Restocking Other units marked cut on 3-15-2021
		7	32	Harvest Without Restocking
		11	11	Harvest Without Restocking
		13	13	Harvest Without Restocking
		20	32	Overstory Removal Cut (from advanced regeneration) (EA/RH/FH)
		31	78	Overstory Removal Cut (from advanced regeneration) (EA/RH/FH)
CHUTE	2020-09-14	2	77	Liberation Cut
		8	52	Overstory Removal Cut (from advanced regeneration) (EA/RH/FH)
BOUNDARY				Complete and/or within PCTAs
			460 acres TOTAL	

Northern Hills - west



Northern Hills - east



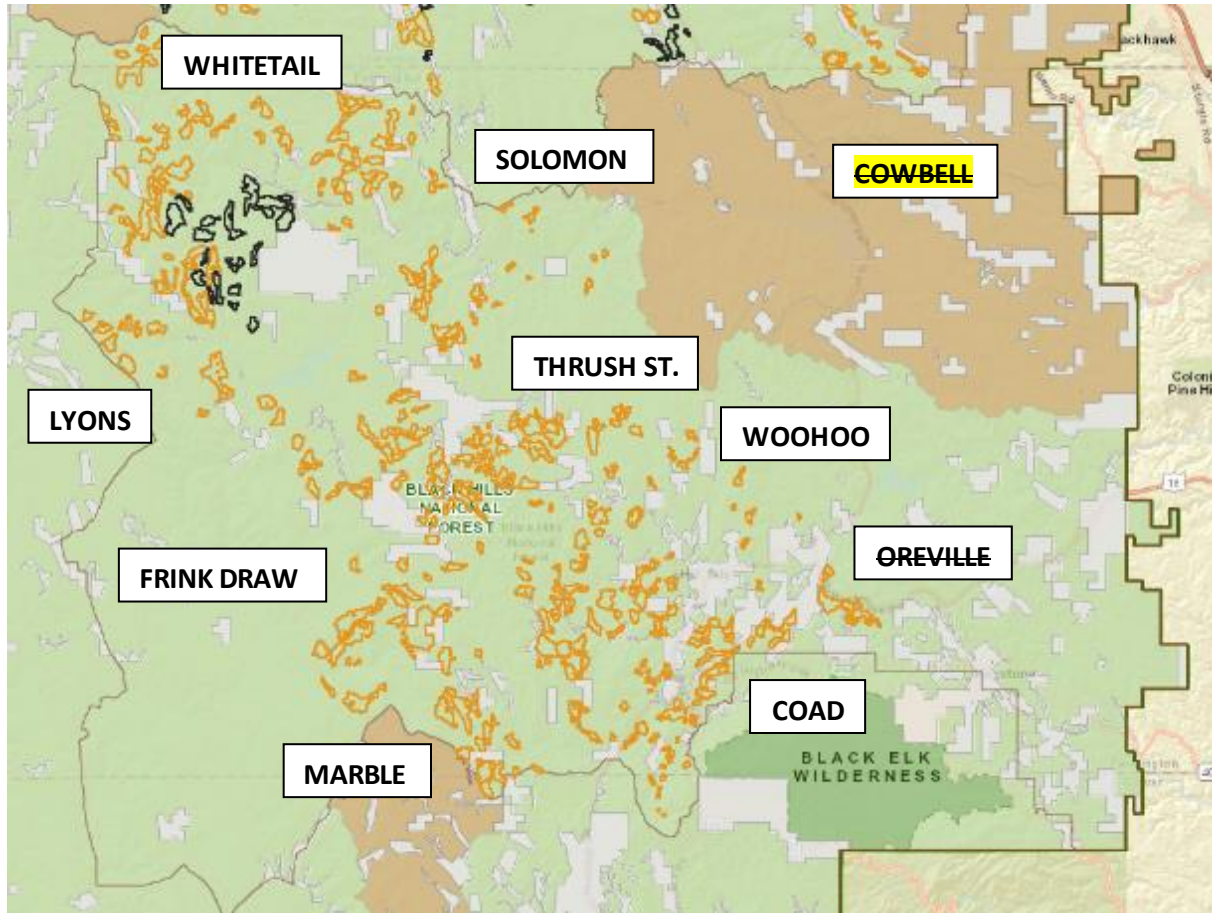
Sale names struck = units of interest already cut

Yellow highlights = open for bids as of 9-06-2021

NORTHERN HILLS DISTRICT				
Sale name	Sold	Non-PTA units	acres	NOTES
WOLFMAN SBA	2021-09-07 Bid opening	18	9	Entire unit OVERSTORY REMOVAL (OR)
		22	62	Small portions on east end OR
ICEMAN	2020-06-08	13	9	Liberation cut (LC)
		15	225	LC
		17	34	LC
		28	7	Improvement Cut (IC)
		30	34	LC
		31	38	LC
		32	7	IC
RAT	2020-04-21	8A	12	LC
		13A	7	Harvest w/o restocking (H w/o R)
		15	6	LC
		16	190	LC
		17	23	LC
		21	14	LC
		22	23	LC
		24	11	LC
		25	116	LC
		29	42	H w/o R
		30	56	LC
JESTER	2020-03-05	2A	26	LC
		2C	25	H w/o R
		2D	19	H w/o R
		4	90	LC
		5	12	H w/o R
		6	10	H w/o R
		7	46	LC
		10A	14	LC
		10B	10	H w/o R
		22A	19	LC
		22B	5	H w/o R
		24A	101	LC
		24B	43	H w/o R
SLIDER	2019-09-03	11A	141	LC
		11B	39	IC
		52	116	IC
TOMCAT	2019-04-21	13	8	LC

MAVERICK	2019-04-03	20	108	LC
		30	2	H w/o R
Viper 1	2021-09-20 Bid opening	--	--	Complete and/or within PCTAs
GOOSE				Complete and/or within PCTAs
ENCINOMAN				Complete and/or within PCTAs
COUGAR				Complete and/or within PCTAs
SUNDOWN				Complete and/or within PCTAs
MERLIN				Complete and/or within PCTAs
GHOSTRIDER				Complete and/or within PCTAs
HOLLYWOOD				Complete and/or within PCTAs
WIZARD				Complete and/or within PCTAs
			1759 acres TOTAL	

MYSTIC RANGER DISTRICT



MYSTIC DISTRICT				
Sale name	Sold	Non-PTA units	acres	NOTES
SOLOMON	2020-07-26	1	58	LC (liberation cut)
		2	61	LC
		3	99	LC
		4	90	LC
		5	83	LC
		8	103	LC
		10	45	LC
		14	26	LC
		15	38	LC
		16	96	LC
		19	55	LC
		21	50	LC
WOOHOO	2020-07-24	6	2	LC
		7	21	LC
		13	9	LC
		25	51	LC

		28	10	LC
		40	21	LC
		41	65	Overstory Removal Cut (from advanced regeneration) (EA/RH/FH)
		45	18	Overstory Removal Cut (from advanced regeneration) (EA/RH/FH)
FRINK DRAW	2019-09-22	29	36	LC
		46	63	LC
		60	81	LC
		93	16	LC
MARBLE	2019-09-03	1	83	LIB/OR (liberation/ overstory removal)
		2	228	LIB/OR
		3	247	LIB/OR
		9	85	LIB/OR
		10	79	LIB/OR
		11	50	LIB/OR
		12	29	LIB/OR
		13	404	LIB/OR
RED = removed from implementation map	Medicine Mt.	16	~ 100	LIB/OR
		18	~ 18	LIB/OR
		19	19	LIB/OR
		31	65	LIB/OR
THRUSH ST.	2019-04-18	1	100	LC
		5	36	LC
		18	96	LC
		40	6	LC
		41	8	LC
		50	18	LC
		55	22	LC
		56	83	LC
		64	76	LC
		261	22	LC
COAD	2019-04-01	96	161	LC
		98	105	LC
		101	50	LC
LYONS	2018-09-23	3	42	Overstory Removal Cut (from advanced regeneration) (EA/RH/FH)
		66	53	Overstory Removal Cut (from advanced regeneration) (EA/RH/FH)
		67	30	Overstory Removal Cut (from advanced regeneration) (EA/RH/FH)
		69	63	Overstory Removal Cut (from advanced regeneration) (EA/RH/FH)
		105	50	Overstory Removal Cut (from advanced regeneration) (EA/RH/FH)

		106	71	Overstory Removal Cut (from advanced regeneration) (EA/RH/FH)
		108	35	Overstory Removal Cut (from advanced regeneration) (EA/RH/FH)
WHITETAIL	2018-09-23	7	84	LIB/OR (liberation/ overstory removal)
		15	35	LIB/OR
		16	17	LIB/OR
		17	72	LIB/OR
		18	5	LIB/OR
		19	41	LIB/OR
		20	32	LIB/OR
		24	11	LIB/OR
		27	62	LIB/OR
		32	17	LIB/OR
		33	24	LIB/OR
		34	80	LIB/OR
		36	87	LIB/OR
		41	65	LIB/OR
		45	18	LIB/OR
		48	59	LIB/OR
COWBELL	2021-09-27 Bid opening	--	--	Complete and/or within PCTAs
OREVILLE	2020-09-20			Complete and/or within PCTAs
			4440 acres TOTAL	

HELL CANYON DISTRICT



BULL SPRING ST.

HELL CANYON DISTRICT				
Sale name	Sold	Non-PTA units	acres	NOTES
Bull Spring St.	2021-09-07	--	--	New temporary roads associated with units 25, 31, 44, and 48 are not publicly disclosed in BHRL NEPA, nor is use of numerous existing templates for temporary roads.
LITTLE BEAR	2020-01-12	9	12	Overstory Removal Cut (from advanced regeneration) (EA/RH/FH)
		13	63	Single-tree Selection Cut (UA/RH/FH) Other units complete 5-10-2021
			75 acres TOTAL	

In conclusion, 124 cutting units, that may not yet be cut, were found where the entire unit, or parts of it, are not disclosed as potential commercial treatment areas in the Black Hills Resilient Landscapes project NEPA.