



**PFMc**

Professional Forest  
Management,  
LLC



## SCIENCE

# Land Managers Can't Burn the West Fast Enough

Prescribed burns, which create buffers against larger fires, can do only so much.

AMANDA MONTHEI OCTOBER 28, 2020



The Massive Burning is  
Premeditated

“If the location is right, if extreme weather is not predicted, and if the appropriate resources are on hand to help should anything go awry, allowing wildfires to burn naturally—with viable fire lines established ahead of time—could be the best way to accomplish widespread forest management.”

Using  
unplanned  
fire....

---



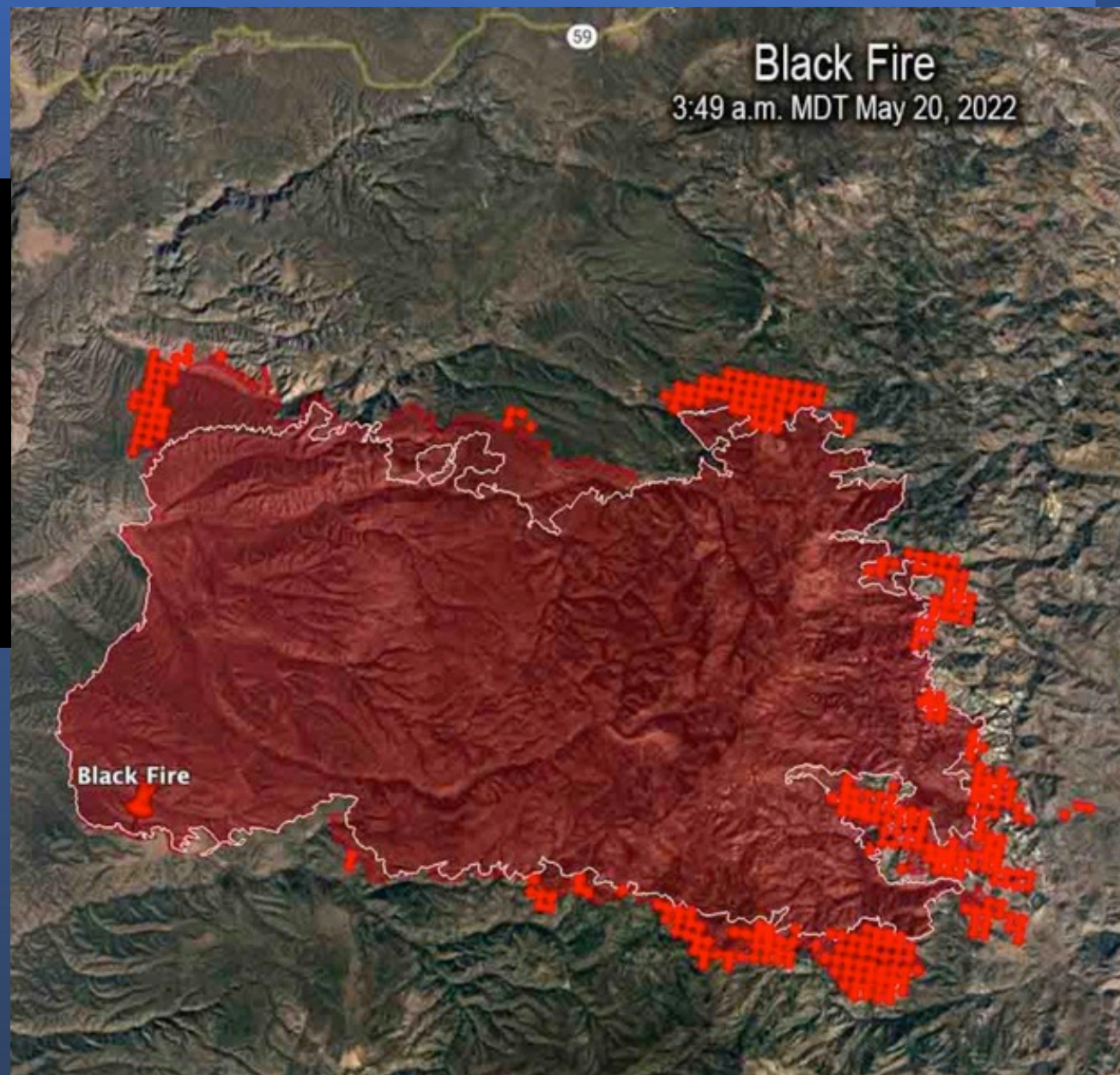
—

To reintroduce  
fire to fire-  
depleted  
ecosystems....

---

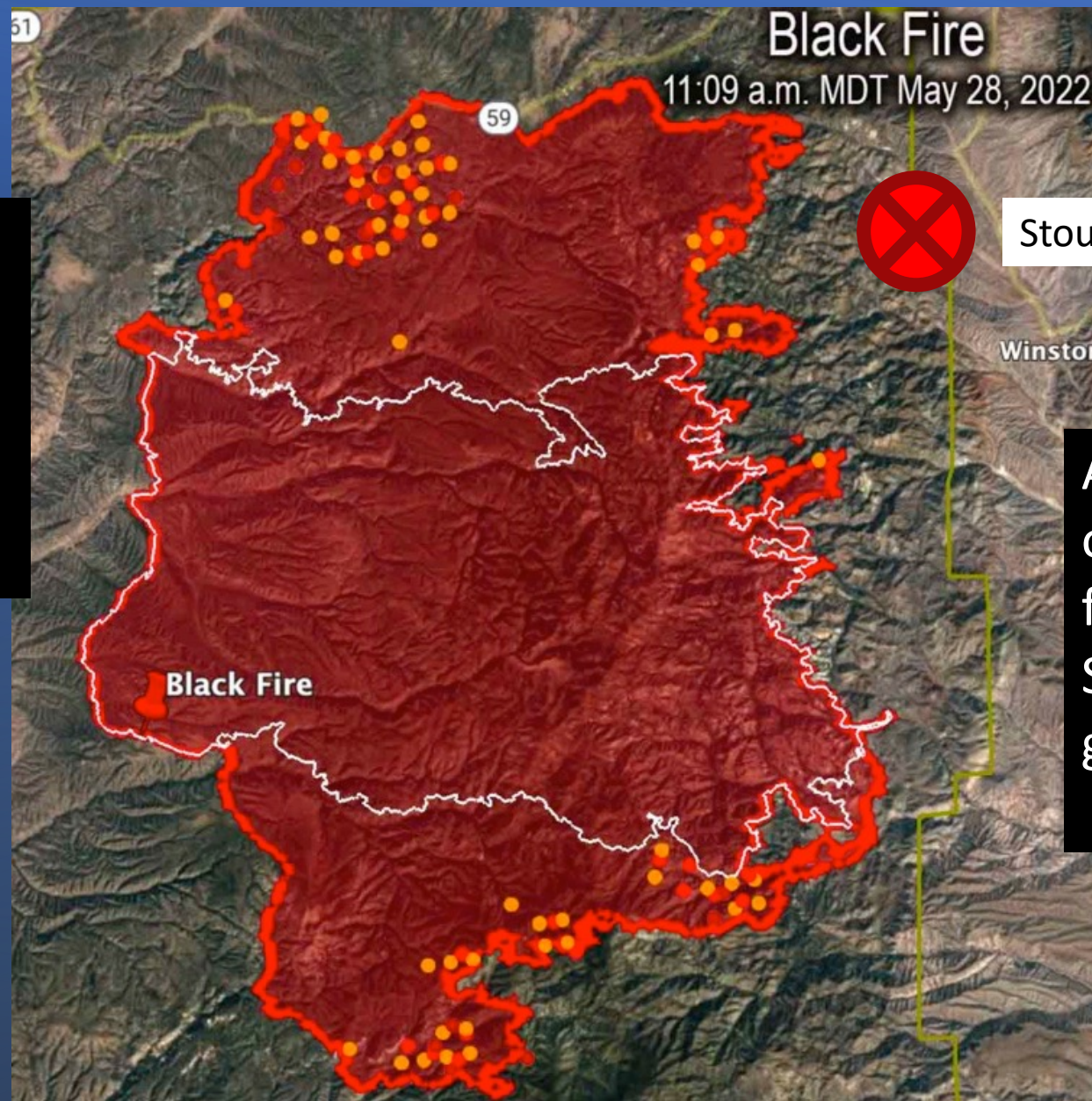


**Black Fire  
2022  
Gila NF  
New Mexico  
May 20**



**Active firing  
operations  
on three  
flanks**

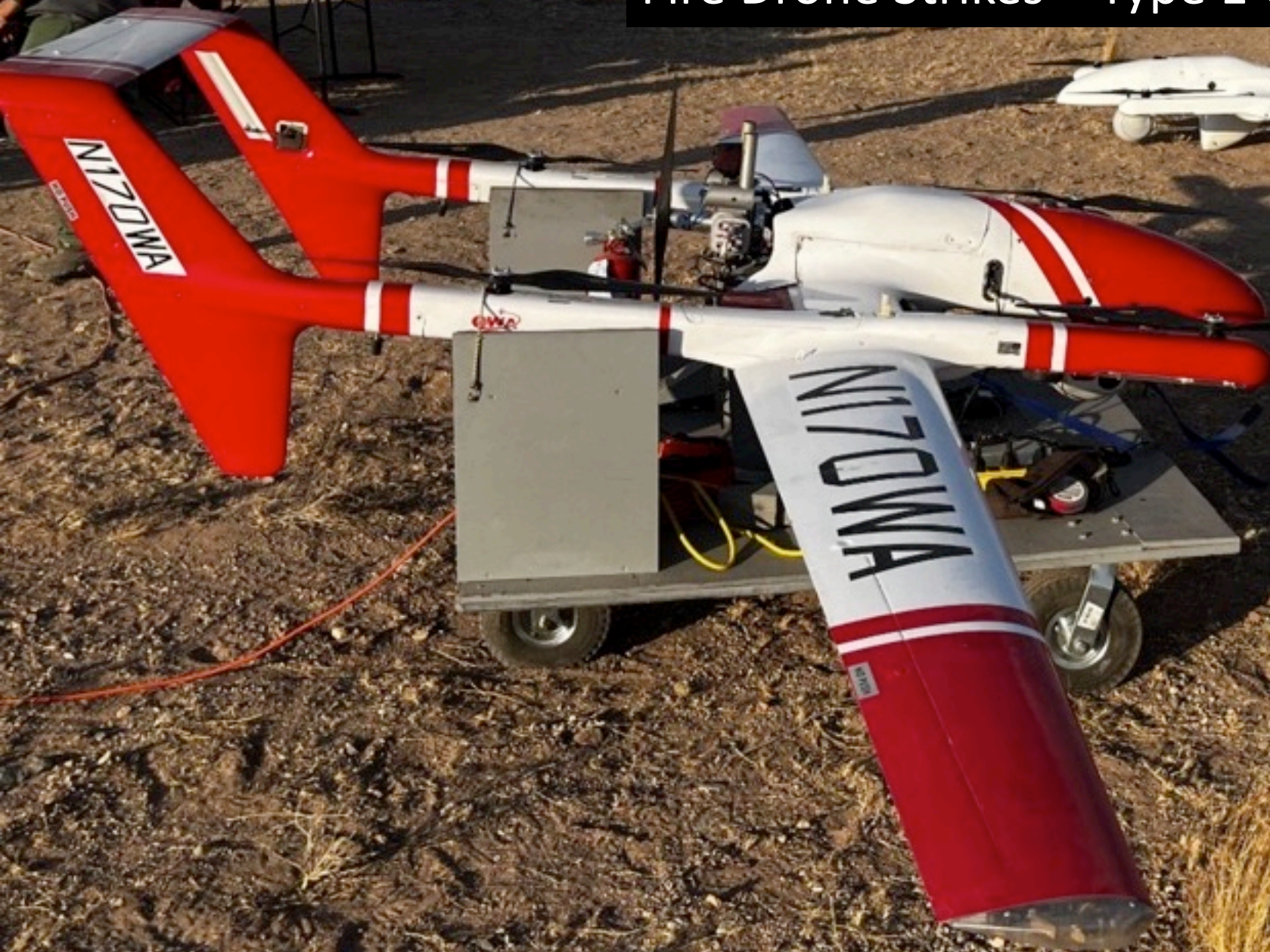
**Black Fire 2022**  
**Gila NF**  
**New Mexico**  
**May 28**



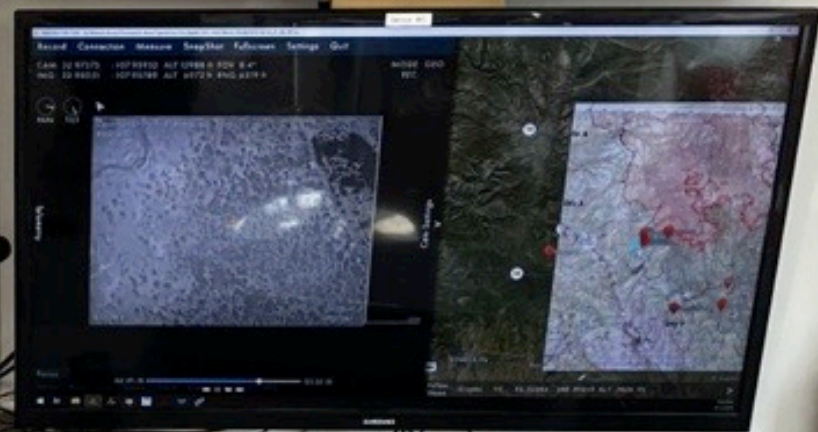
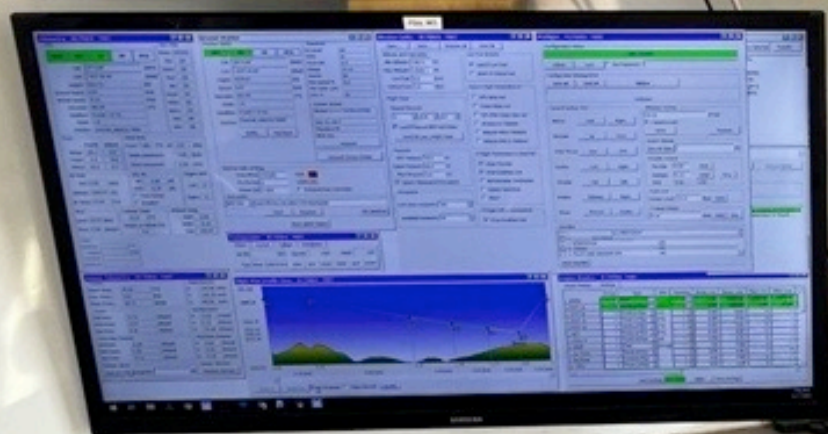
Stout Outfit

Active firing operations on two flanks – North and South – Perimeter growing

# Fire Drone Strikes – Type 1 UAV



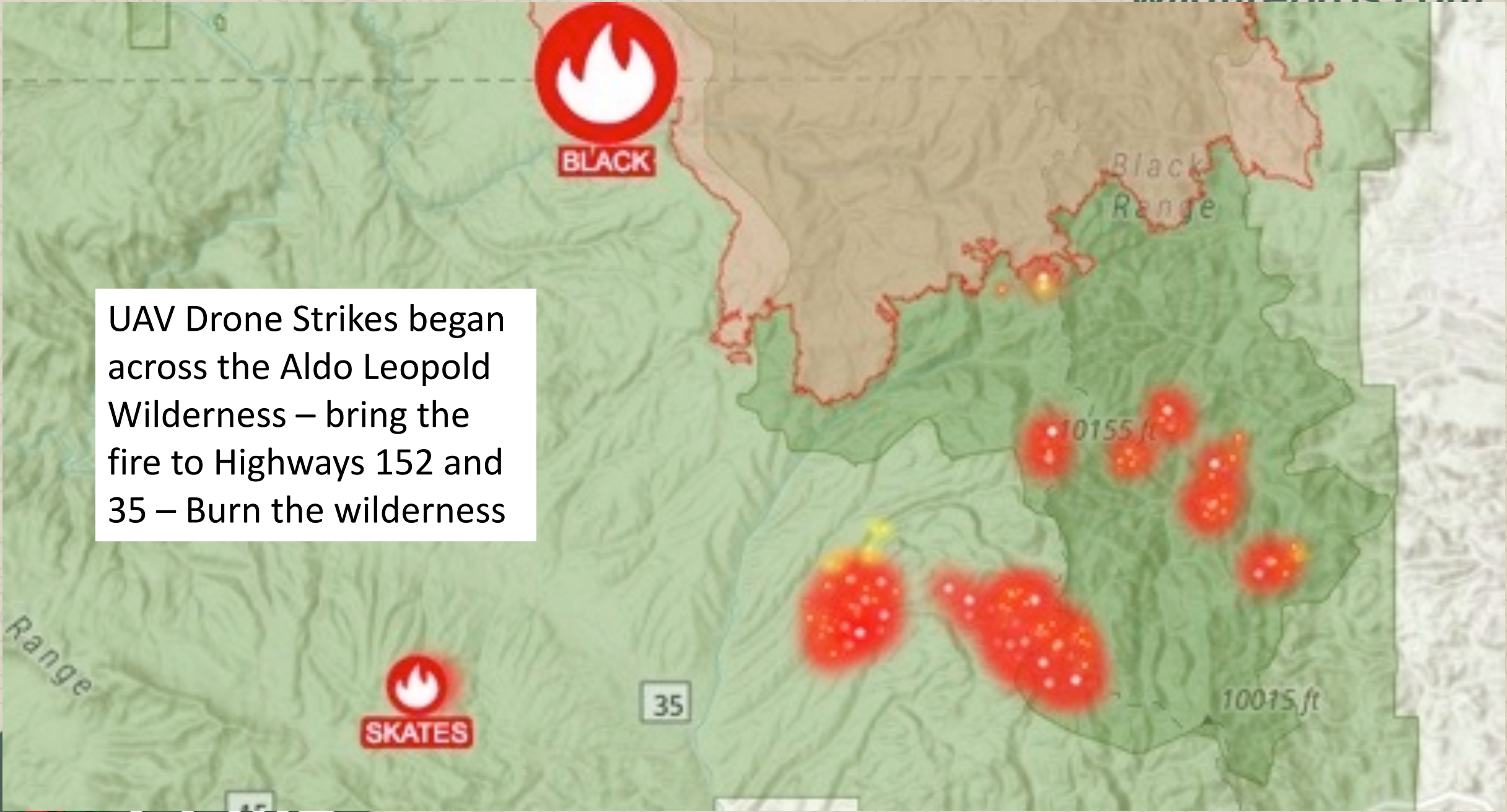




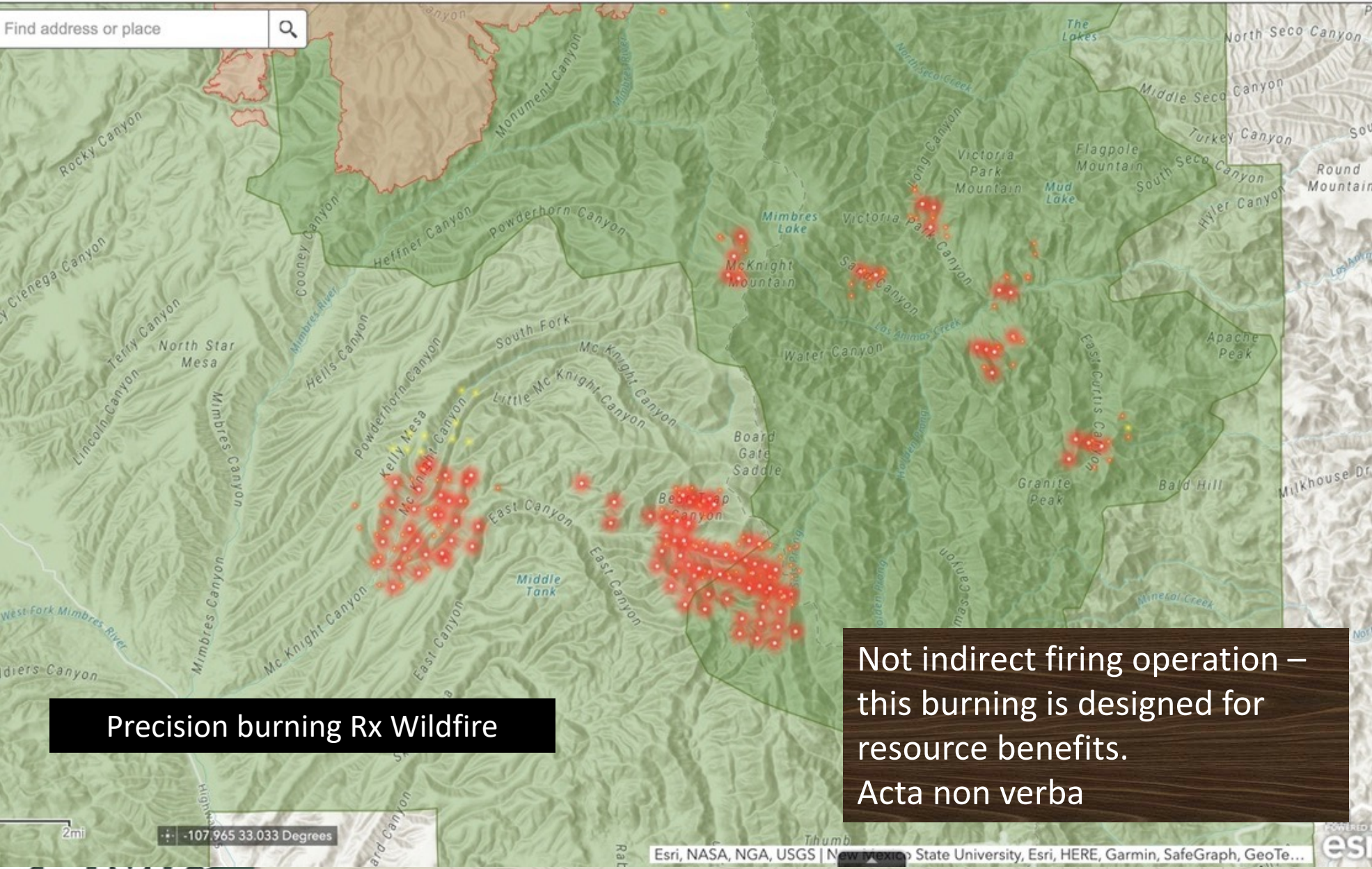


---

Drones lighting a ridge in an indirect firing operation



UAV Drone Strikes began across the Aldo Leopold Wilderness – bring the fire to Highways 152 and 35 – Burn the wilderness

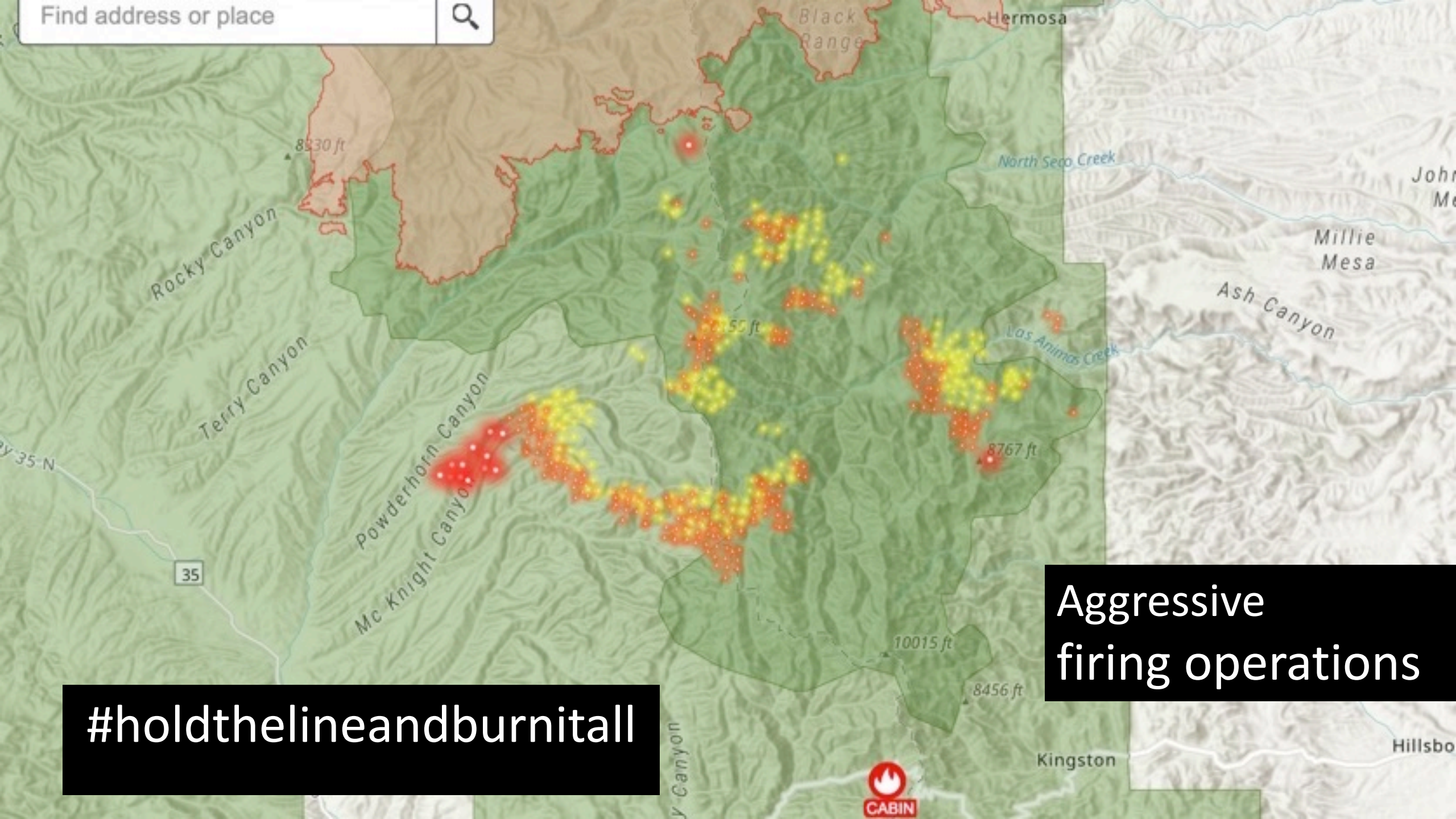


Precision burning Rx Wildfire

Not indirect firing operation – this burning is designed for resource benefits. Acta non verba

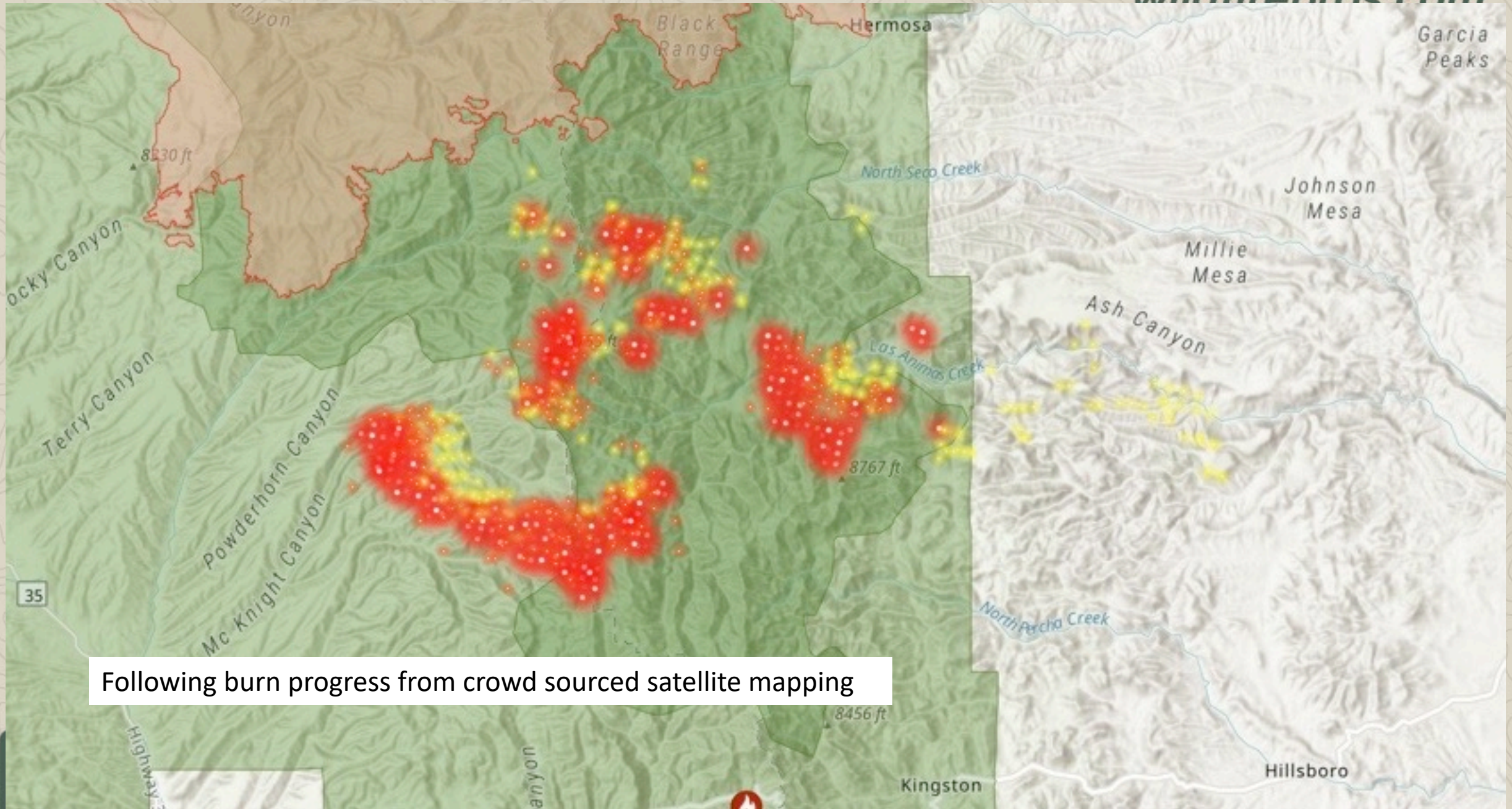


Find address or place

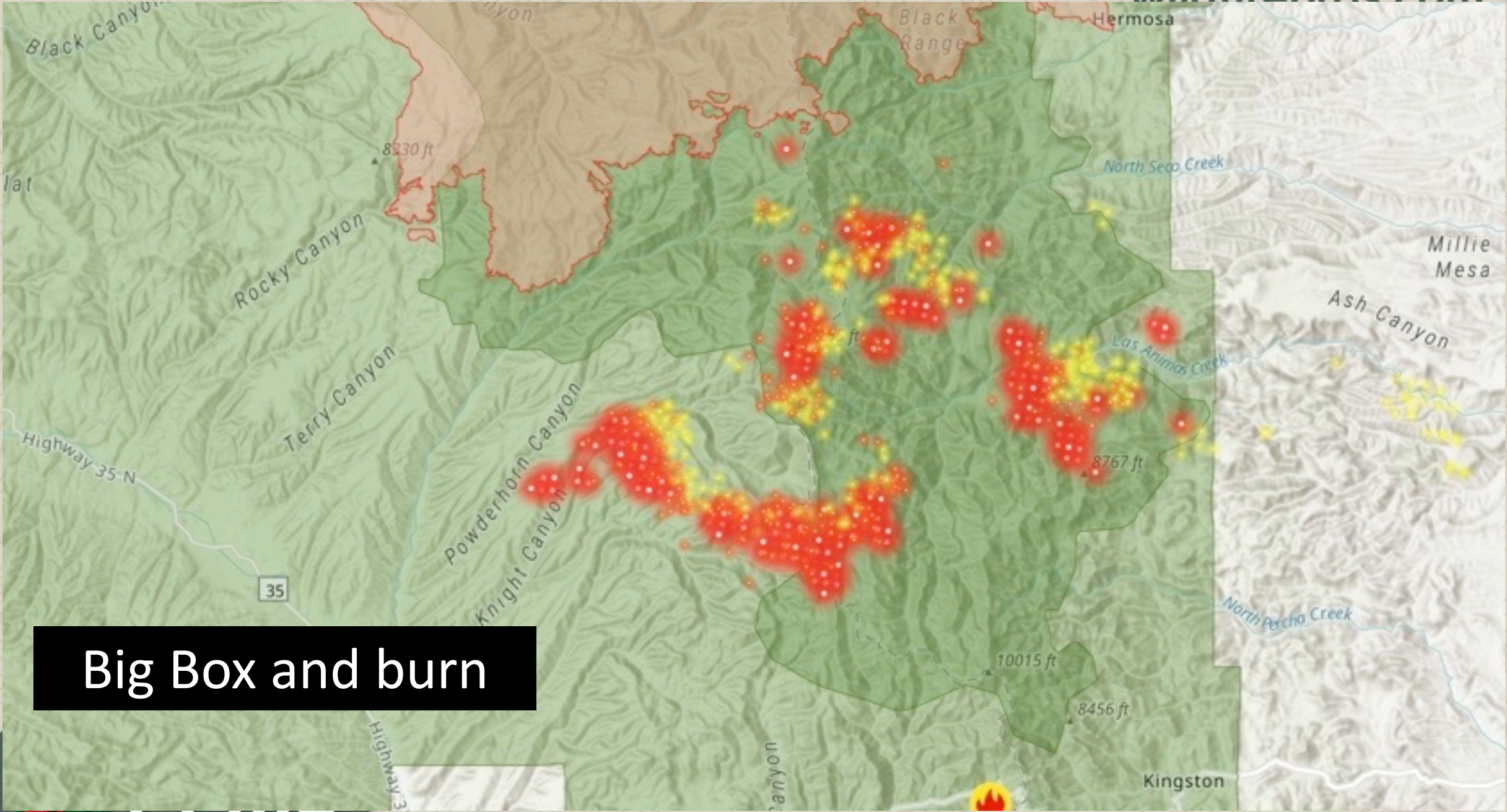


Aggressive firing operations

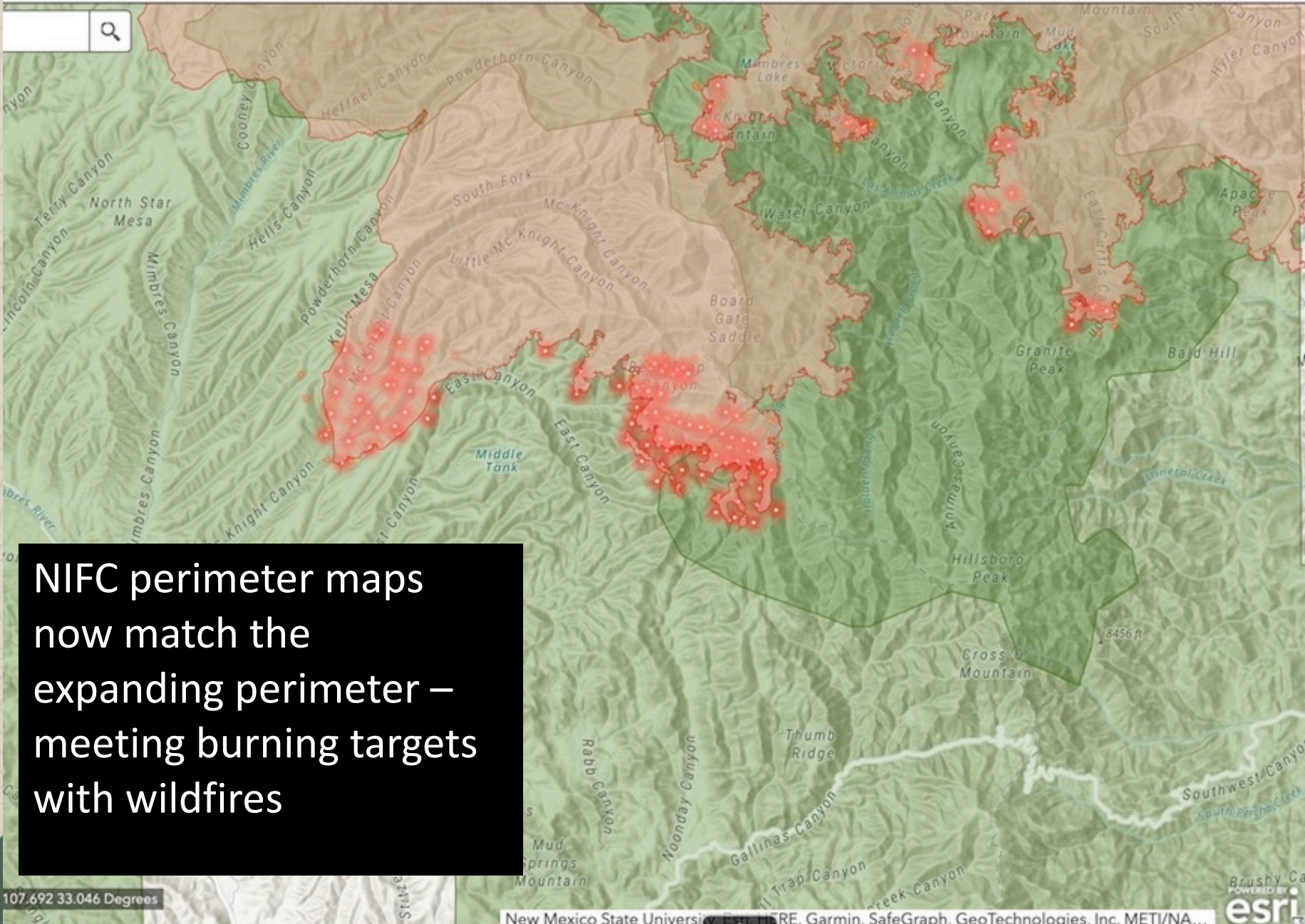
#holdthelineandburnital



Following burn progress from crowd sourced satellite mapping



Big Box and burn



**Legend**

**New Fires (Crowdsourced - Early Notification) Public Feature Layer View - 85277**

**Crowdsourced Fire Locations**

- Active
- Forward Progress Stopped
- Contained

**Current Wildfires (IRWIN - hosted by Esri)**

**USA Wildfire Incidents (Acres)**

- 300,000 or more
- 50,000-299,999
- 10,000-49,999
- 1,000-9,999
- 0-999
- New (Past 24-hour)
- Incident Complex
- Prescribed Fire

**Current Wildfires (IRWIN - hosted by NIFC)**

- 

**Radio Log Intel (Crowdsourced by #FireMappers)**

- 

**USA Wildfire Perimeters (NIFC)**

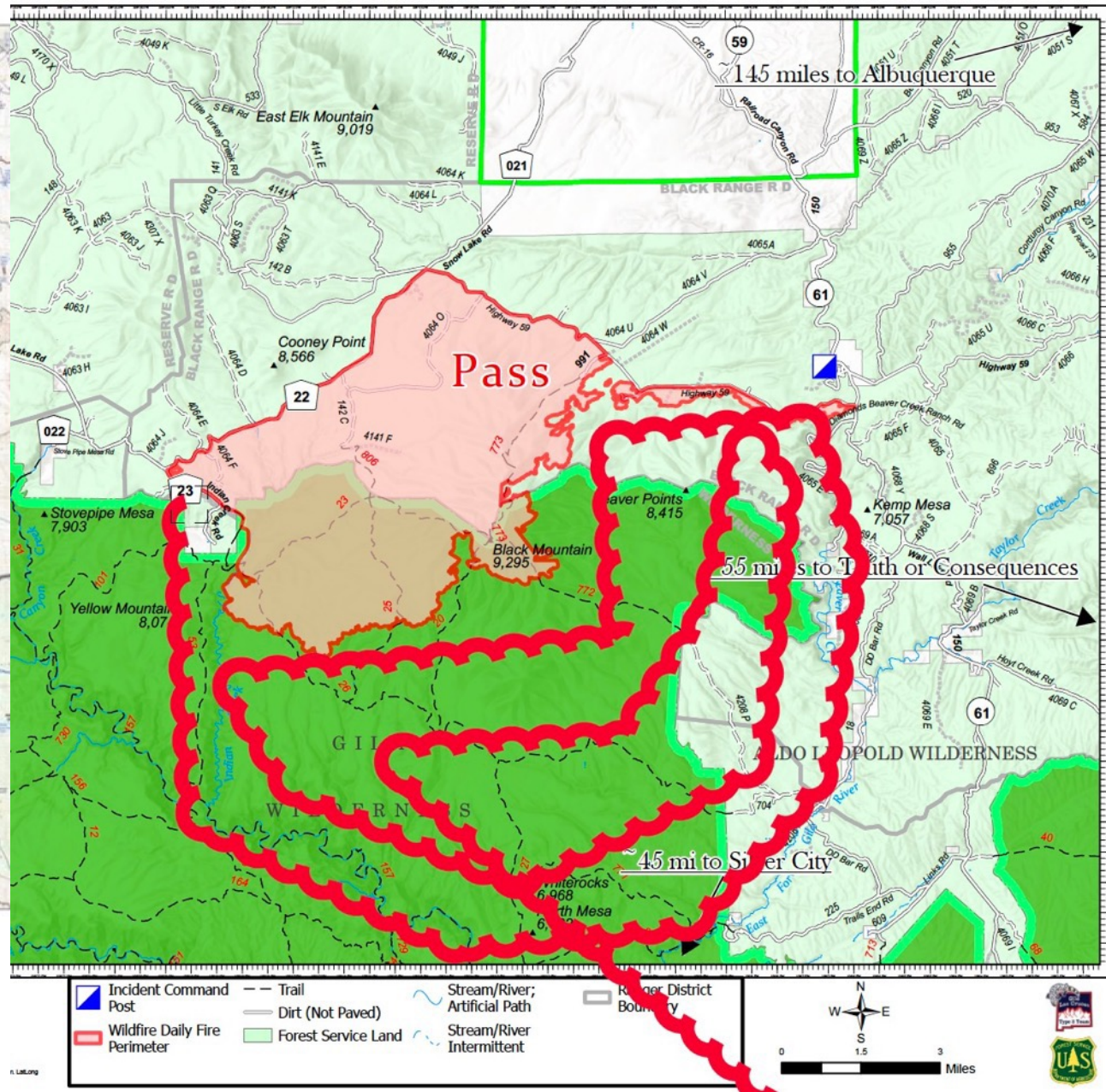
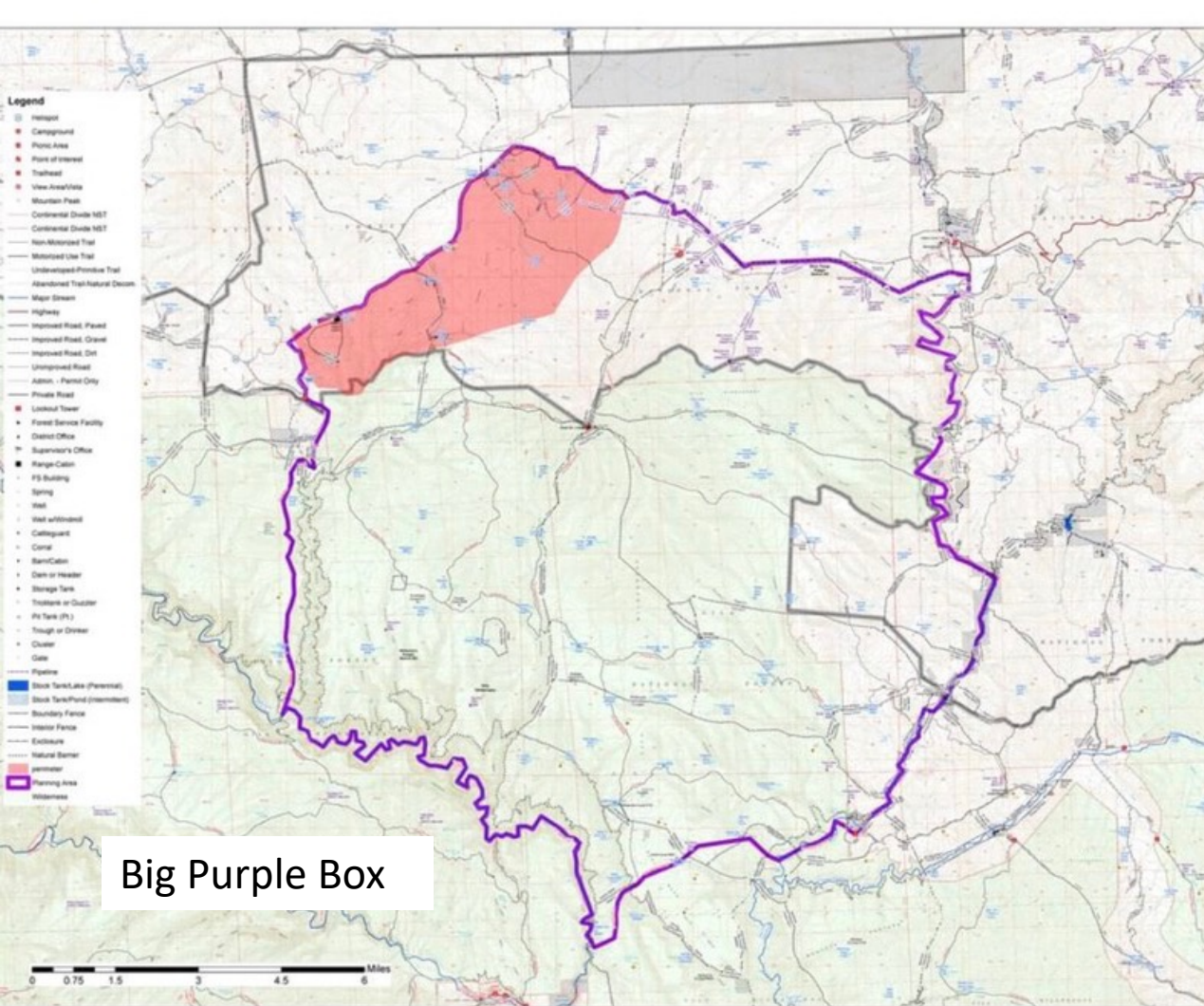
- Wildfire Daily Fire Perimeter
- Prescribed Fire

NIFC perimeter maps now match the expanding perimeter – meeting burning targets with wildfires

107.692 33.046 Degrees

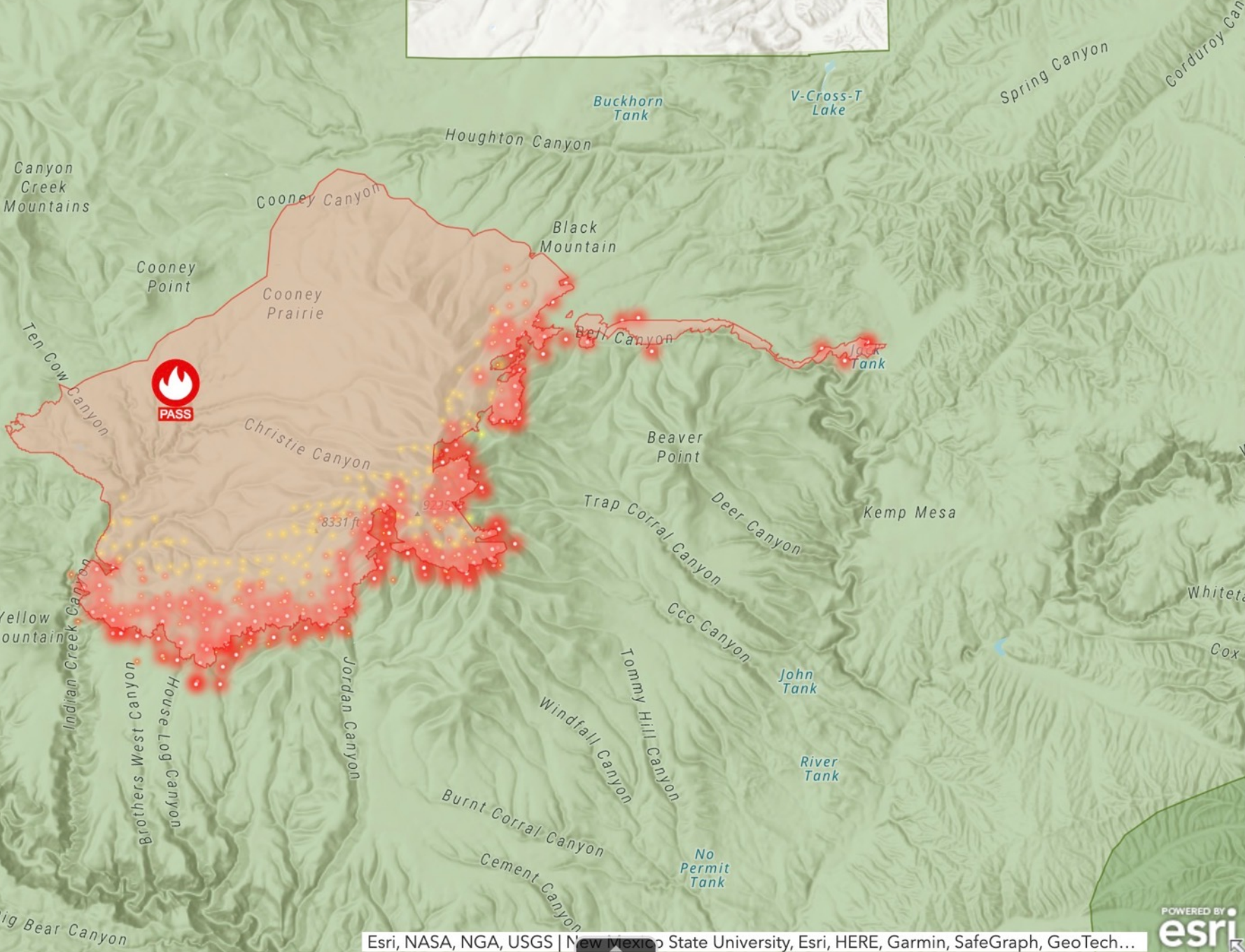






Pass Fire map indicates fire perimeter in red filled polygon. The purple boundary illustrates the planning area within which this fire will be allowed to grow.

#Holdthelineandburnitall



-  Active
-  Forward Progress
-  Contained

Current Wildfires (

USA Wildfire Incident

-  300,000 or more
-  50,000-299,999
-  10,000-49,999
-  1,000-9,999
-  0-999
-  New (Past 24 hours)
-  Incident Contained
-  Prescribed Fire

Radio Log Intel (C#FireMappers)

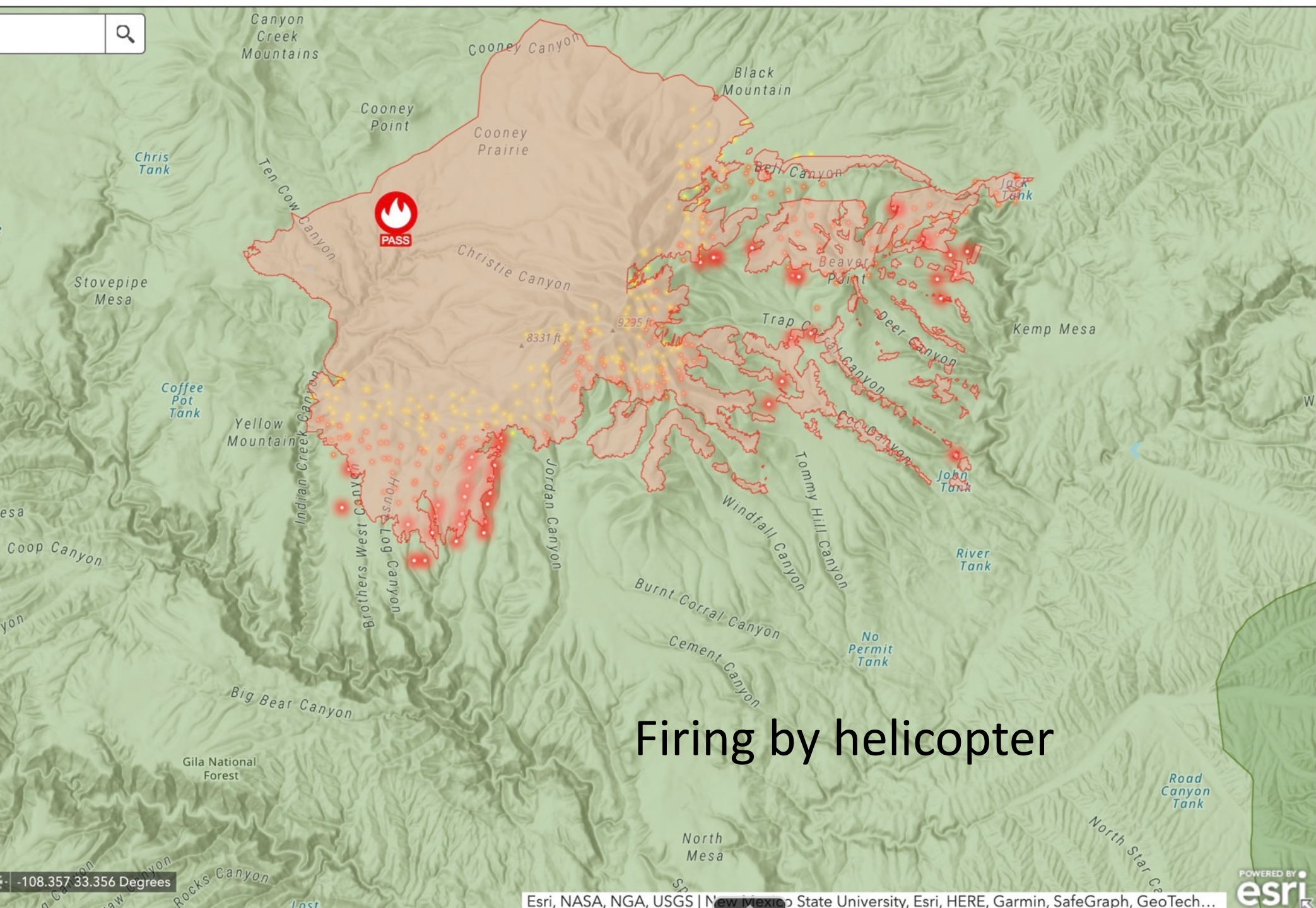


Current Wildfire Perimeter

-  Wildfire Daily Perimeter
-  Prescribed Fire

Weather Station (Miles)

Wind Speed (km/h)



# Firing by helicopter

### Legend

**New Fires (2.0 Under MAINTENANC  
Crowdsourced by #FireMappers)**

- Active
- Forward Progress Stopped
- Contained

**Current Wildfires (IRWIN - hosted by**

**USA Wildfire Incidents (Acres)**

- 300,000 or more
- 50,000-299,999
- 10,000-49,999
- 1,000-9,999
- 0-999
- New (Past 24-hour)
- Incident Complex
- Prescribed Fire

**Radio Log Intel (Crowdsourced by #FireMappers)**

- 

**Current Wildfire Perimeters (NIFC)**

- Wildfire Daily Fire Perimeter
- Prescribed Fire

**Weather Station (NOAA METAR)**

- Wind Speed (km/h)

-108.357 33.356 Degrees



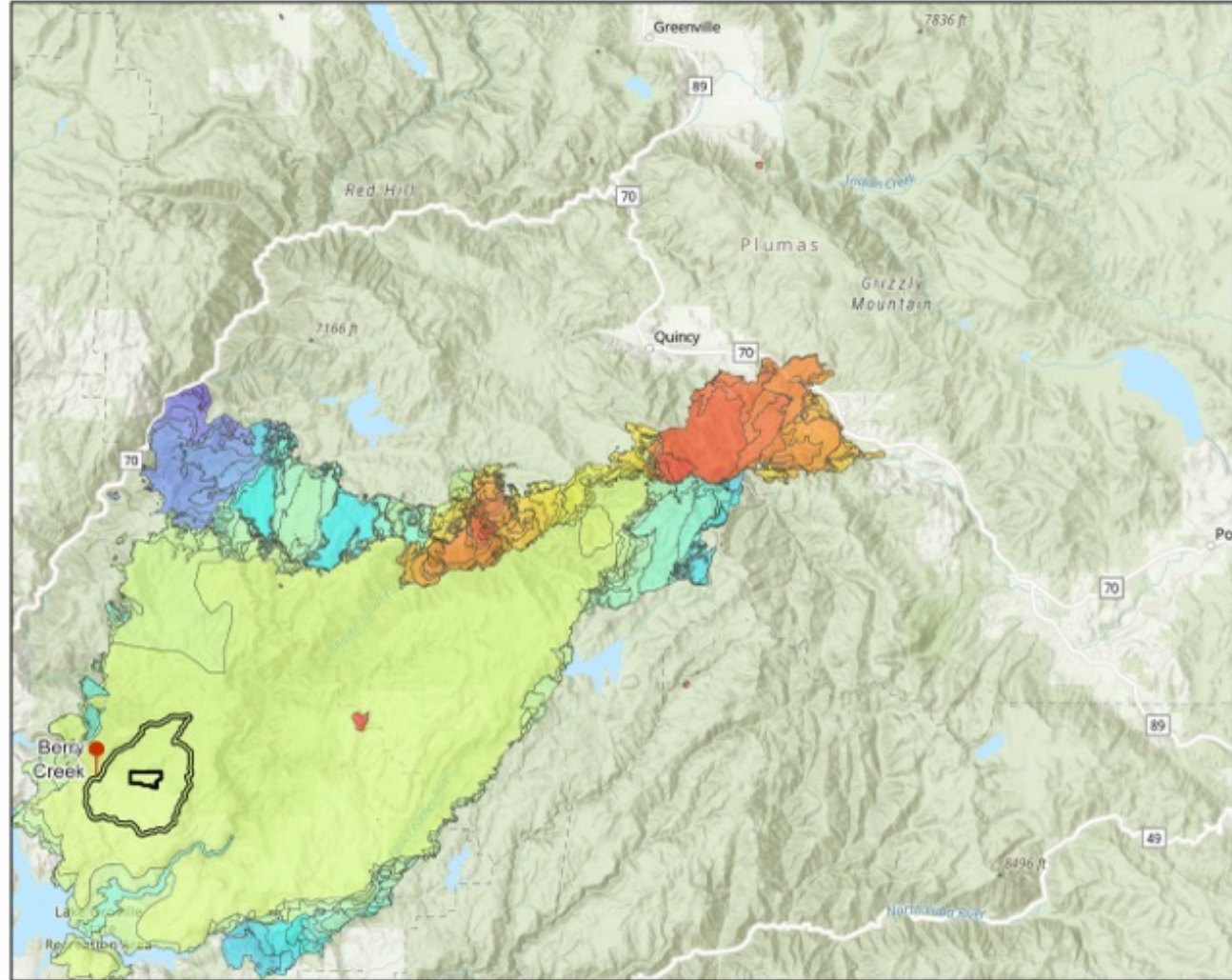
Using Congressionally appropriated WFM “emergency fire suppression” dollars to field thousands of firefighters to do prescribed wildfires for 8 months through the summer....





# The Bear Fire 2020

### North Complex Fire Progression



### North Complex Fire Progression Map






T21N R5E Sec 25, 26 MDBM Berry Creek & Bush Creek 7.5' Quad Butte County 1:400,000

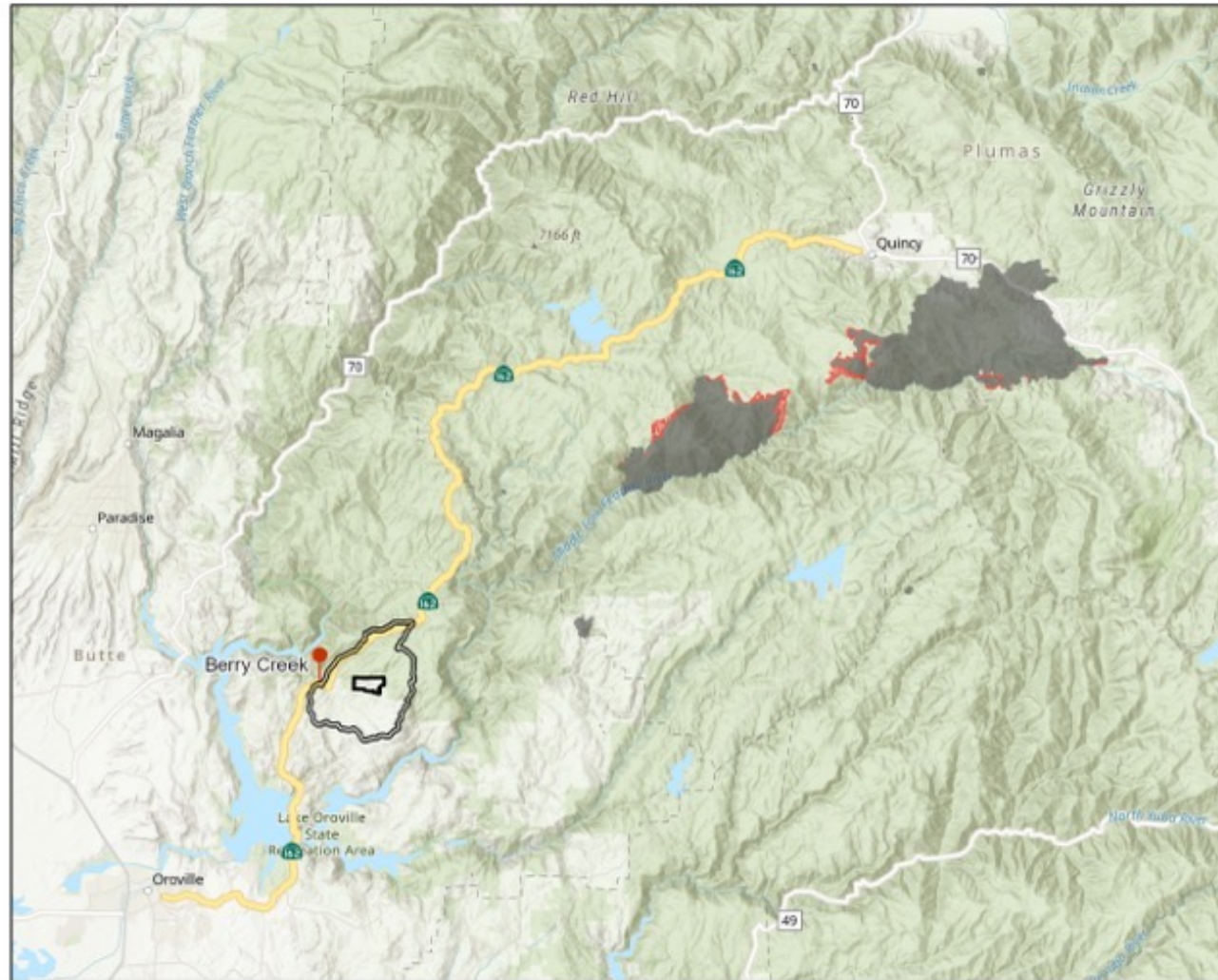


**Forester's Co-Op**  
 Professional Forestry  
 & GIS Services  
 (530) 273-4326  
[www.fcoo-op.com](http://www.fcoo-op.com)

Prepared by EMS  
 August 25th, 2022

### North Complex Fire Progression

-  Burned Area  
36,663 Acres
-  09 / 03 / 2020  
858 Acres
-  Camp Okizu  
Boundary
-  Berry Creek  
Watershed
-  Oroville-Quincy  
Highway State  
Route 162
-  Berry Creek



### North Complex Fire Progression Map Series (09/03/2020)

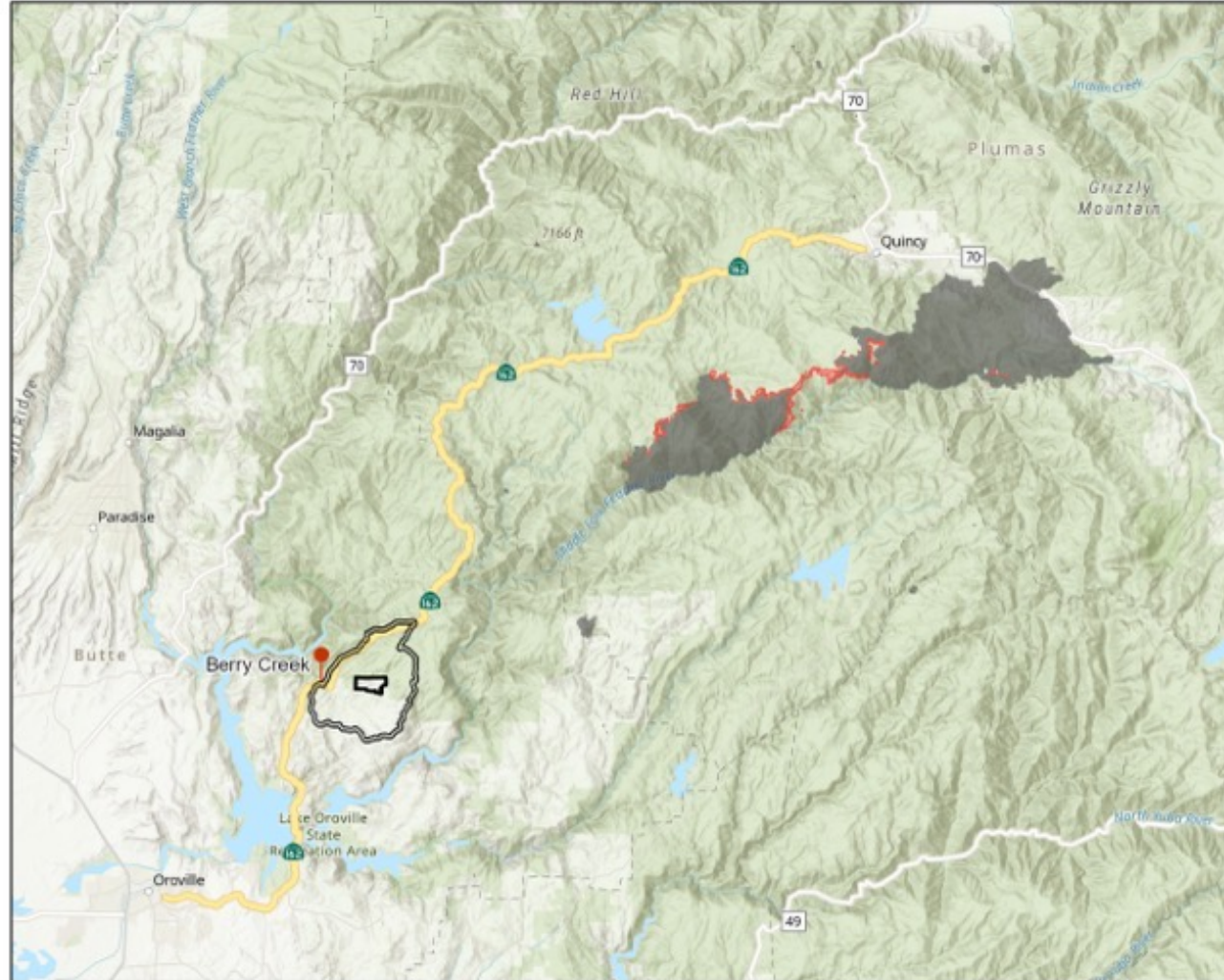
T21N R5E Sec 25, 26 MDBM Berry Creek & Bush Creek 7.5' Quad Butte County 1:400,000

Prepared by EMS  
August 30th, 2022



### North Complex Fire Progression

- Burned Area  
37,522 Acres
- 09 / 04 / 2020  
873 Acres
- Camp Okizu  
Boundary
- Berry Creek  
Watershed
- Oroville-Quincy  
Highway State  
Route 162
- Berry Creek



### North Complex Fire Progression Map Series (09/04/2020)

T21N R5E Sec 25, 26 MDBM Berry Creek & Bush Creek 7.5' Quad Butte County 1:400,000

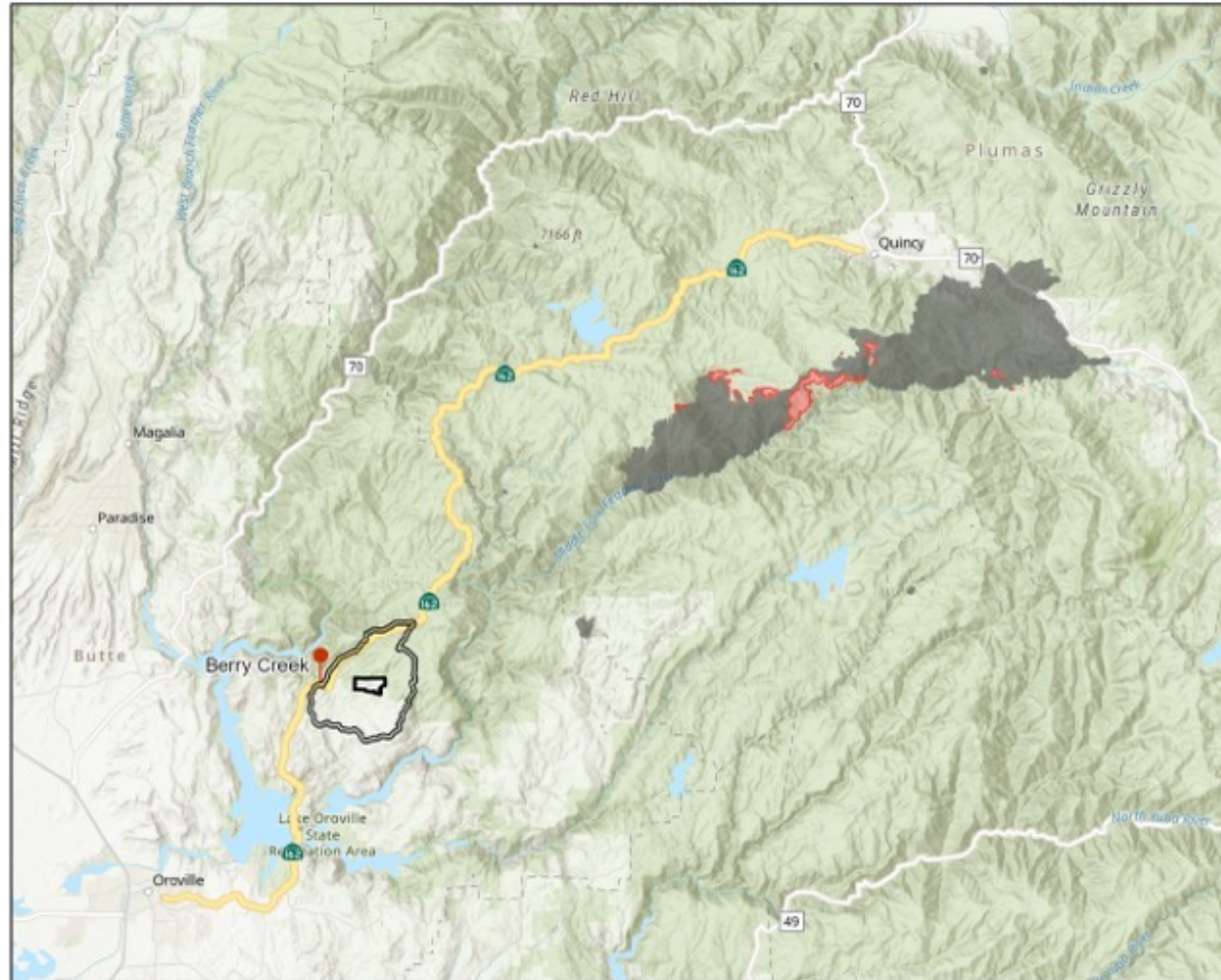
Prepared by EMS  
August 30th, 2022





### North Complex Fire Progression

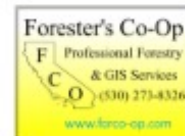
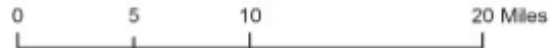
- Burned Area  
38,394 Acres
- 09 / 05 / 2020  
1,645 Acres
- Camp Okizu  
Boundary
- Berry Creek  
Watershed
- Oroville-Quincy  
Highway State  
Route 162
- Berry Creek



### North Complex Fire Progression Map Series (09/05/2020)

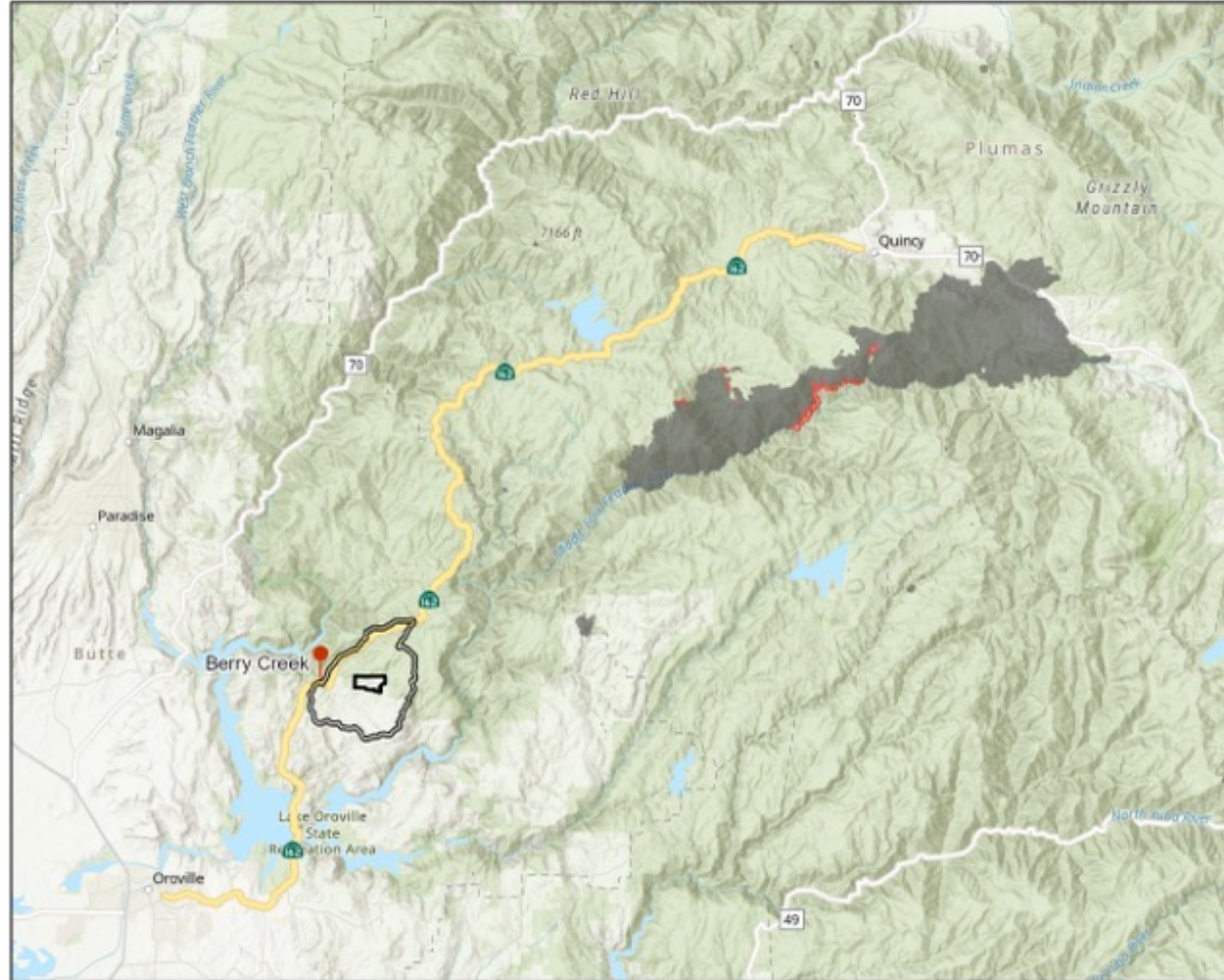
T21N R5E Sec 25, 26 MDBM Berry Creek & Bush Creek 7.5' Quad Butte County 1:400,000

Prepared by EMS  
August 30th, 2022



### North Complex Fire Progression

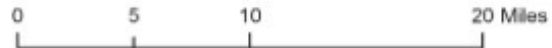
- Burned Area  
40,633 Acres
- 09 / 07 / 2020  
471 Acres
- Camp Okizu  
Boundary
- Berry Creek  
Watershed
- Orville-Quincy  
Highway State  
Route 162
- Berry Creek

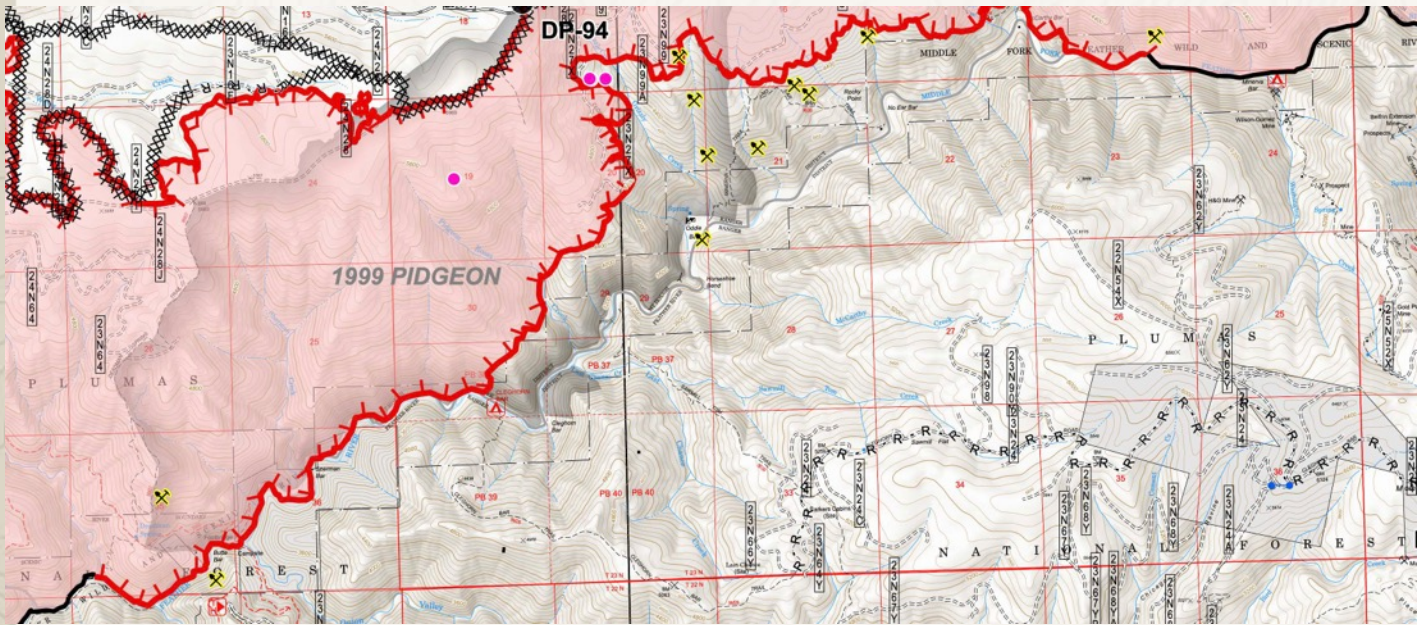


### North Complex Fire Progression Map Series (09/07/2020)

T21N R5E Sec 25, 26 MDBM Berry Creek & Bush Creek 7.5' Quad Butte County 1:400,000

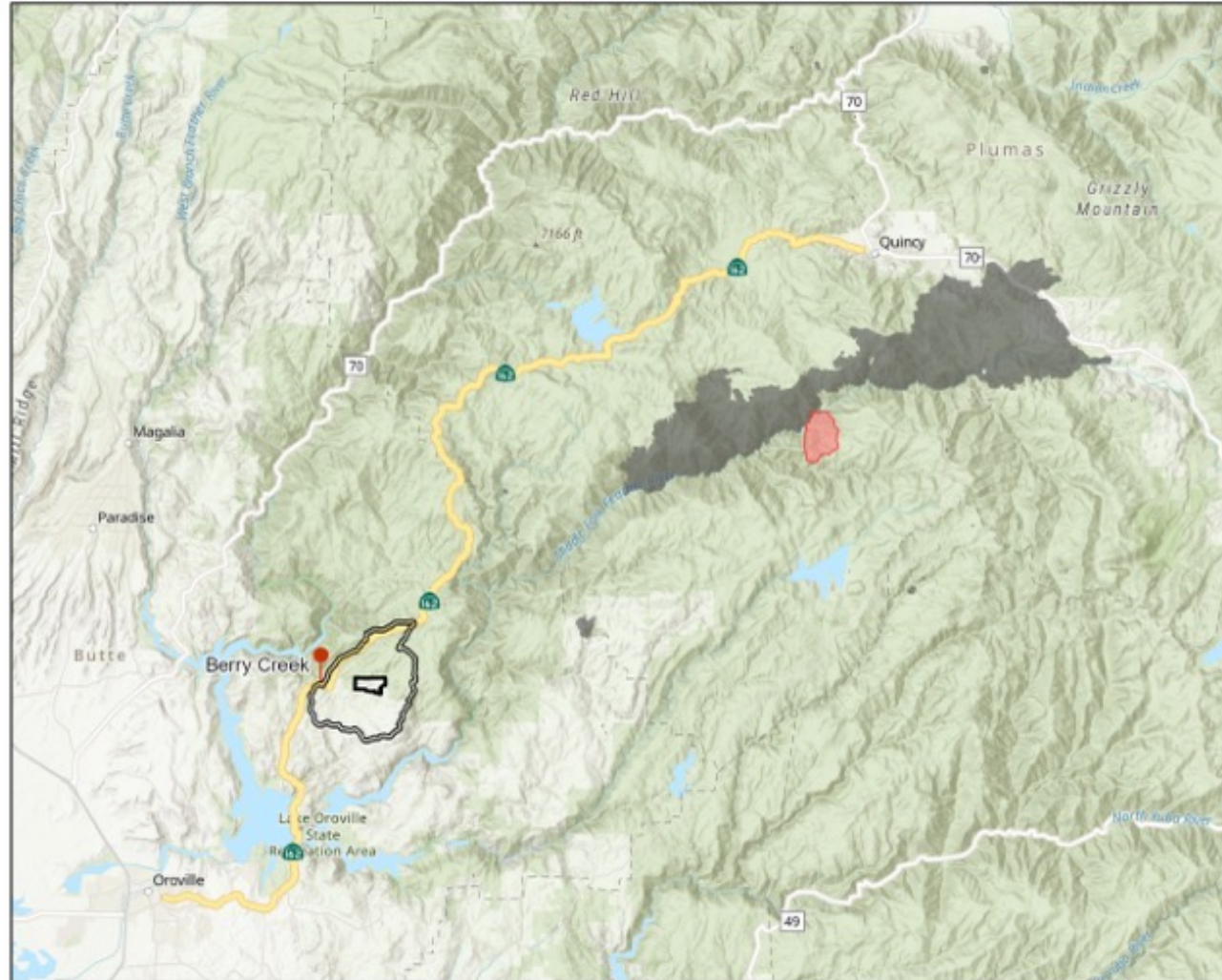
Prepared by EMS  
August 30th, 2022





### North Complex Fire Progression

- Burned Area  
41,104 Acres
- 09 / 08 / 2020  
1,692 Acres
- Camp Okizu  
Boundary
- Berry Creek  
Watershed
- Oroville-Quincy  
Highway State  
Route 162
- Berry Creek



### North Complex Fire Progression Map Series (09/08/2020)

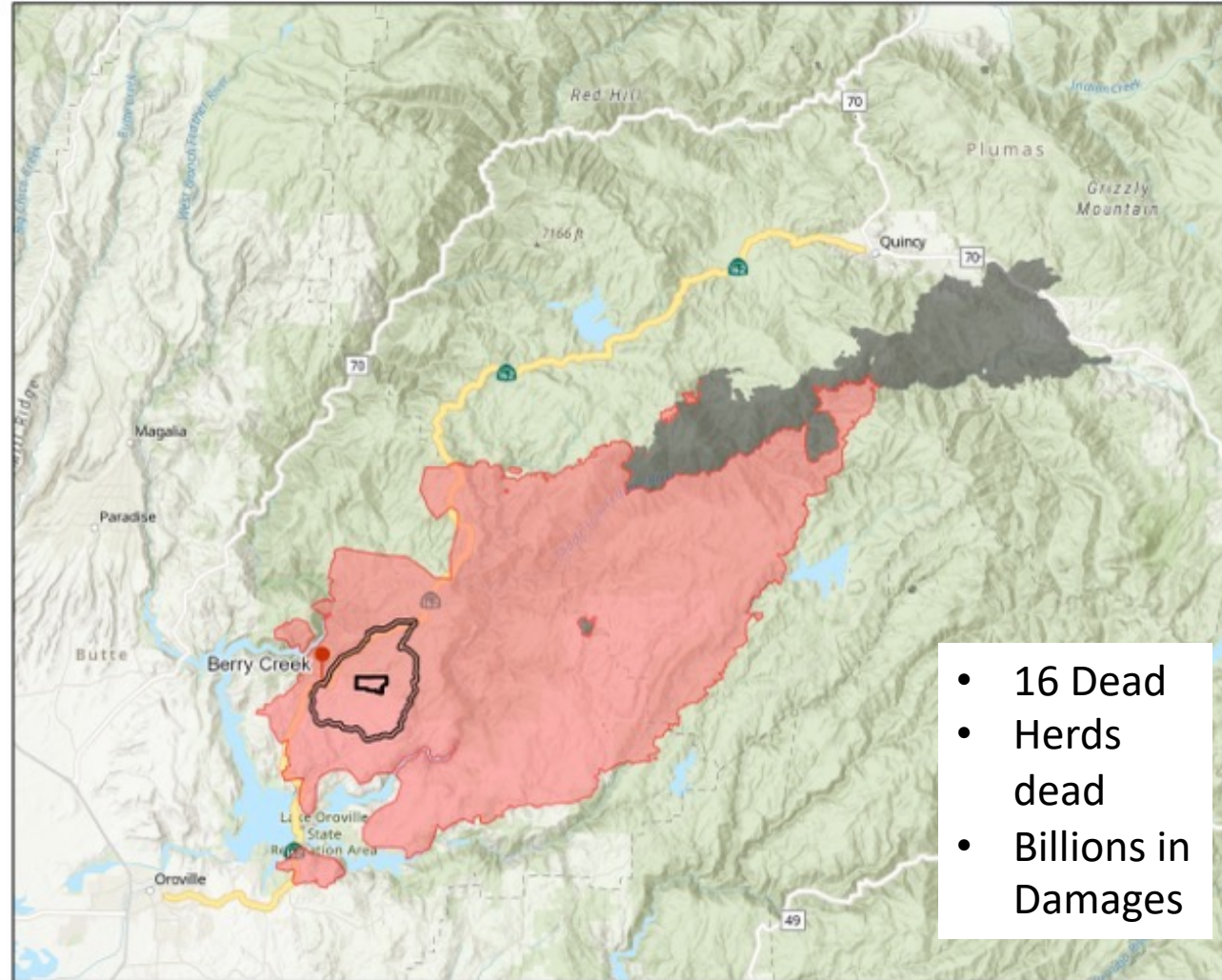
T21N R5E Sec 25, 26 MDBM Berry Creek & Bush Creek 7.5' Quad Butte County 1:400,000

Prepared by EMS  
August 30th, 2022



### North Complex Fire Progression

- Burned Area  
41,796 Acres
- 09 / 09 / 2020  
181,596 Acres
- Camp Okizu  
Boundary
- Berry Creek  
Watershed
- Oroville-Quincy  
Highway State  
Route 162
- Berry Creek



- 16 Dead
- Herds  
dead
- Billions in  
Damages

### North Complex Fire Progression Map Series (09/09/2020)

T21N R5E Sec 25, 26 MDBM Berry Creek & Bush Creek 7.5' Quad Butte County 1:400,000

Prepared by EMS  
August 30th, 2022

