

DRAFT **CRESTED BUTTE, COLORADO** **DRAFT**
COMMUNITY PROFILE
January, 2022

POPULATION

Population Estimates

<u>Year</u>	<u>Crested Butte</u>			<u>Mt. Crested Butte</u>		<u>GUNNISON COUNTY</u>
	<u>Census/State</u>	<u>Local Estimate</u>	<u>Dogs</u>	<u>Census/State</u>	<u>Local Estimate</u>	
1960	289					5,477
1970	372					7,578
1980	959			272		10,686
1990	878			264	417	10,281
1991	903			339		10,416
1992	909	1,154		352		10,776
1993	980	1,384		355		11,311
1994	1,018	1,457		363		11,671
1995	1,031	1,465		365		11,974
1996	1,047	1,465	300	366		12,244
1997	1,068	1,577	314	366		12,405
1998	1,526	1,598	330	679		13,442
1999	1,528	1,526	299	695		13,736
2000	1,529	1,630	366	723		13,989
2001	1,537	1,534	355	774		14,345
2002	1,507	1,507	291	763		14,316
2003	1,467	1,537	328	748		14,206
2004	1,466	1,499	301	745		14,230
2005	1,503	1,525	290	762		14,473
2006	1,505	1,603	282	771		14,650
2007	1,506	1,555	295	805		14,957
2008	1,484	1,560	292	814		15,137
2009	1,469	1,522	327	808		15,266
2010	1,482	1,496	311	798		15,309
2011	1,497	1,497	314	801		15,409
2012	1,512	1,502	215	802		15,393
2013	1,529	-----	----	805		15,606
2014	1,559	-----	----	815		15,797
2015	1,602	-----	----	836		16,134
2016	1,644	-----	----	850		16,449

Population Estimates

Year	Crested Butte			Mt. Crested Butte		GUNNISON COUNTY
	Census/State	Local Estimate	Dogs	Census/State	Local Estimate	
2017	1,691	-----	----	868		16,891
2018	1,724	1,565	281	874		17,188
2019	1,628	-----	-----	884		16,941
2020	1,635	-----	-----	938		16,944
2021		1,615	243			

Sources: State of Colorado, Department of Local Affairs, Division of Local Government, Demography Section - July population estimates for Crested Butte and Mt. Crested Butte and Gunnison County; Town of Crested Butte annual census (December 31st population estimate); *Potential Peak Season Population is the total population + 4 people per unit in 2nd homes and short term rentals.

Age Distribution

Age Groups	Male				Female				Total			
	1980	1990	2000	2010	1980	1990	2000	2010	1980	1990	2000	2010
1- 6	21	43	27	55	31	41	40	38	52	84	67	93
7-17	53	35	68	80	35	35	71	65	88	70	139	145
18-24	84	63	108	67	80	47	69	84	164	110	177	151
25-44	327	285	478	377	235	227	372	294	562	512	850	671
45-64	28	45	149	193	21	34	118	170	49	79	267	363
65+	18	14	18	39	26	9	11	25	44	23	29	64

Median Age

	1980	1990	2000	2010
Crested Butte	28.7	30.2	30.6	34.4
Colorado	28.6	32.5	34.3	36.1

Ethnic and Racial Composition

RACE	1980		1990		2000		2010	
	Number	Percent	Number	Percent	Number	Percent	Number	Percent
Total Population	959	100.0	878	100.0	1,529	100.0	1,487	100.0
One Race					1,522	99.5	1,467	98.7
White (NSO)	921	96.0	865	98.5	1,486	97.2	1,426	95.9
Black	2	.2	6	.7	4	0.3	1	0.1
Native American	5	.5	3	.3	14	0.9	6	0.4
Asian	2	.2	2	.2	11	0.7	21	1.4
Other	29	3.0	2	.2	7	0.5	13	0.9
Two or more races					7	0.5	20	1.3
HISPANIC OR LATINO								
Total Population					1,529	100.0	1,487	100.0
Hispanic or Latino (or any race)	29	3.0	14	1.6	42	2.7	63	4.2
Not Hispanic or Latino	930	97.0	864	98.4	1,487	97.3	1,424	95.8

*data not yet available

Persons of Spanish Origin may be of any race

NSO = Not of Spanish Origin

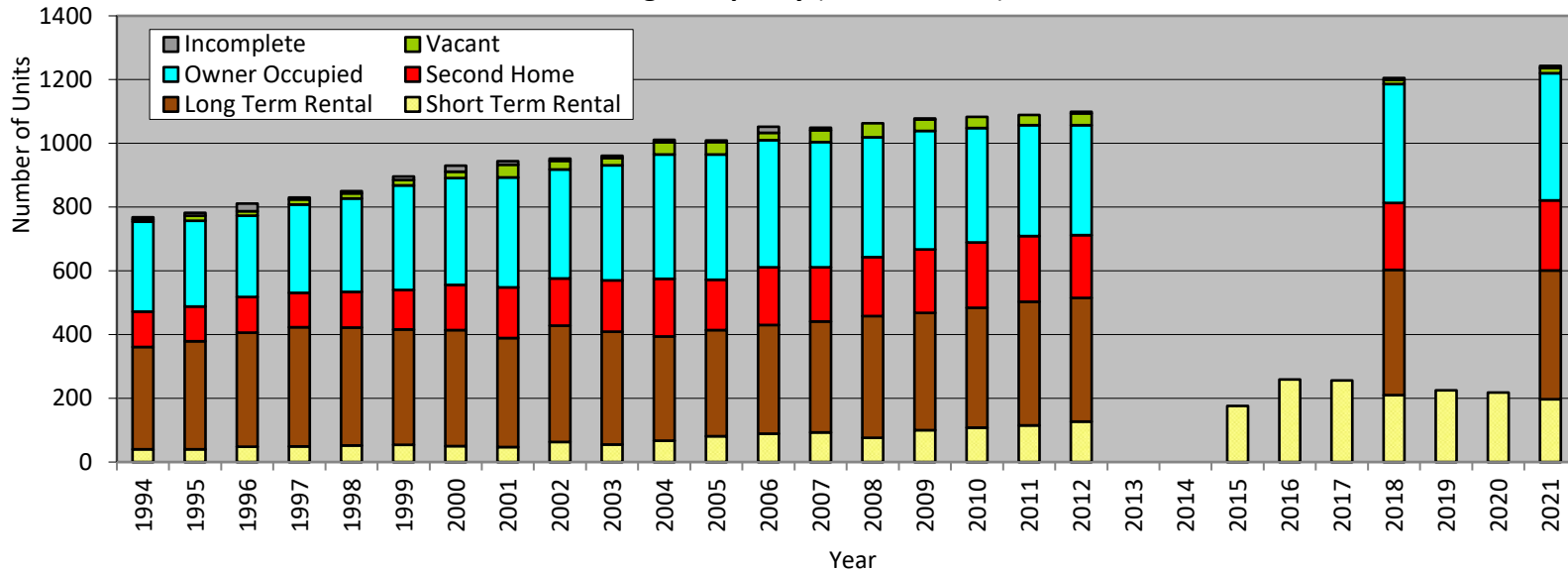
Sources: U.S. Bureau of the Census, 1980, 1990, 2000, 2010; Colorado Department of Local Affairs;
Crested Butte Community Development Department

HOUSING

Housing Occupancy

	2000	2005	2010	Estimate from Dec. 31 Census										
	2000	2005	2010	2011	2012	2013	2014	2015	2016	2017	2018	2019	2020	2021
Total Housing Units	928	1009	1083	1089	1099	1105	1109	1123	1166	1169	1182	1190	1236	1244
Long Term Rental	364	333	376	388	388						393			404
Owner Occupied	335	393	359	348	345						373			399
Short Term Rental	50	81	108	115	127					256	187	209	205	197
2nd Homes	142	158	205	206	197						210			220
Vacant units	20	39	35	32	37						13			16
Incomplete new	19	5	0	0	5						6			7
% of Units that are Occupied	75	72	68	68	67						65			64

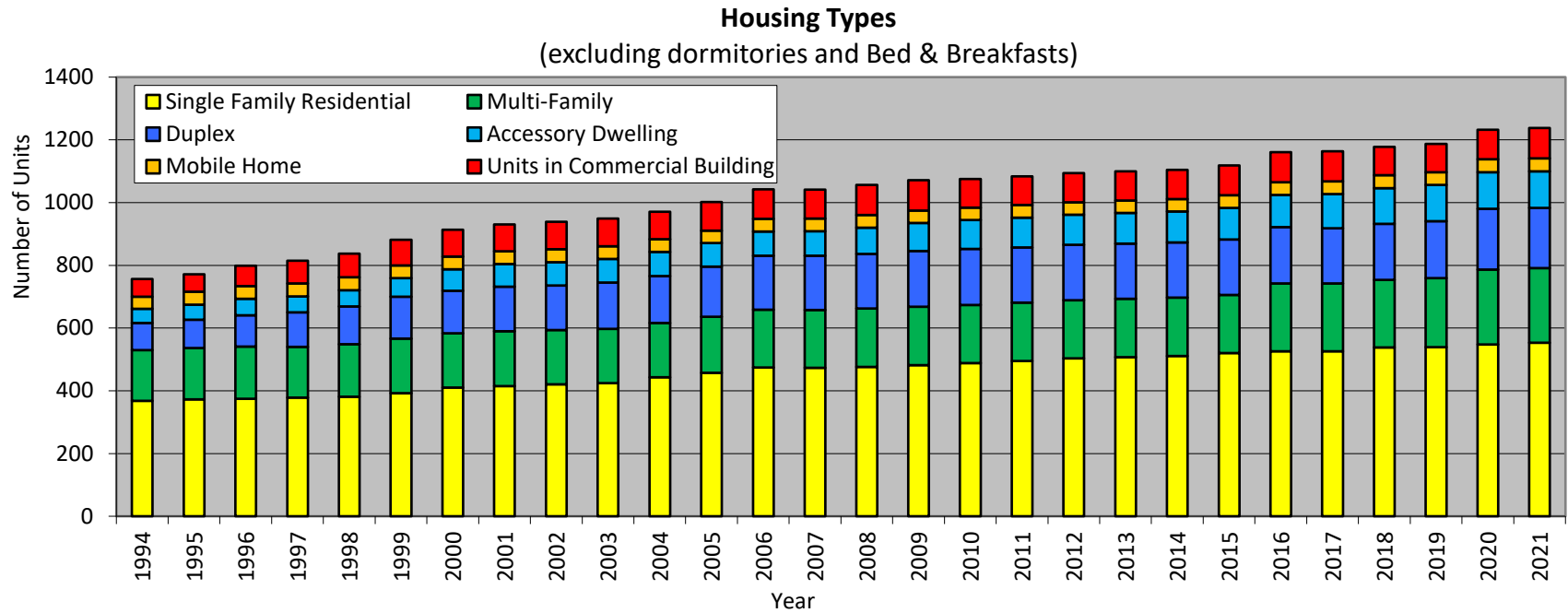
Housing Occupancy (December 31)



Housing Types

	2008	2009	2010	2011	2012	2013	2014	2015	2016	2017	2018	2019	2020	2021
Single Family Residential	476	482	488	495	503	507	511	520	526	526	538	539	548	553
Multifamily Residential Units	186	186	186	186	186	186	186	186	216	216	216	220	238	238
Duplex Units	174	178	178	176	176	176	176	176	180	176	178	182	194	192
Accessory Dwellings	84	89	92	95	96	98	99	101	102	109	114	115	117	117
Mobile Homes	40	40	40	40	40	40	39	40	41	41	41	41	41	41
Bed & Breakfasts	77	8	5	5	5	5	5	5	5	4	4	4	4	4
Units in a Business Building	96	96	91	92	93	93	93	95	96	96	91	90	94	97
Dormitory														1
Deed Restricted Rentals/Owners	186	186	199	198	198	200	201	203	235	249	259	270	302	305
Persons per Occup.Housing Unit	2.06	2.06	2.04	2.03	2.05						2.04			2.01
Persons per Housing Unit	1.47	1.41	1.38	1.37	1.37						1.32			1.30

Source: 1990 and 2000 Census; Town of Crested Butte annual censuses.

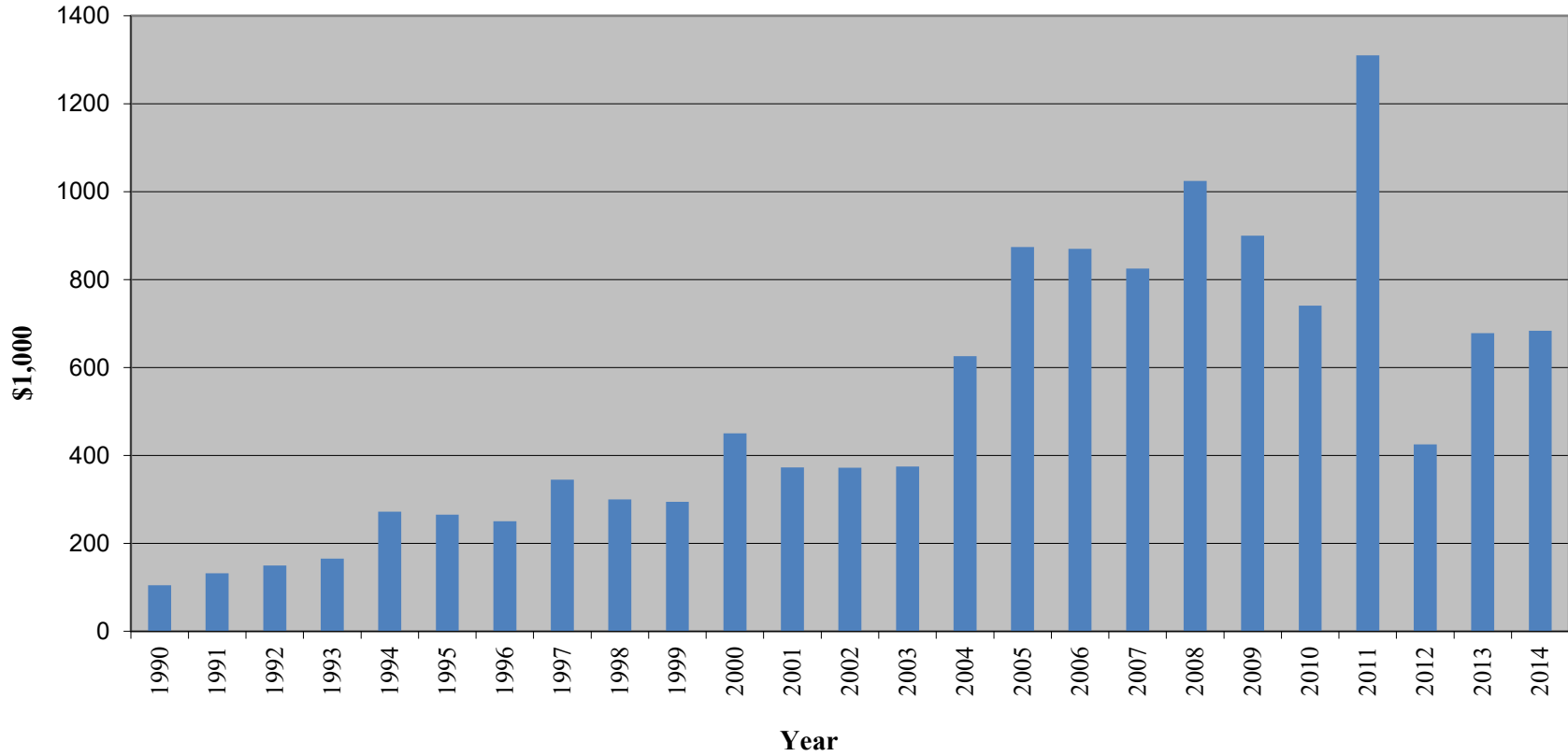


Median Single Family Home Sale Price (in thousands of dollars) – does not include deed restricted homes

1995	1996	1997	1998	1999	2000	2001	2002	2003	2004	2005	2006	2007	2008	2009
265	250	345	300	294.5	450	372.5	372.3	375.0	625.6	873.8	870.0	825.0	1,024.5	900.0
2010	2011	2012	2013	2014	2015	2016	2017	2018	2019	2020	2021			
740.6	1,310.0	425.0	677.8	683.8	629.3	770.9	914.6	906.9	1,118	1,133	1,340			

Source: Reports to the Town for Real Estate Transfer Tax.

Median Single Family Home Sale Price



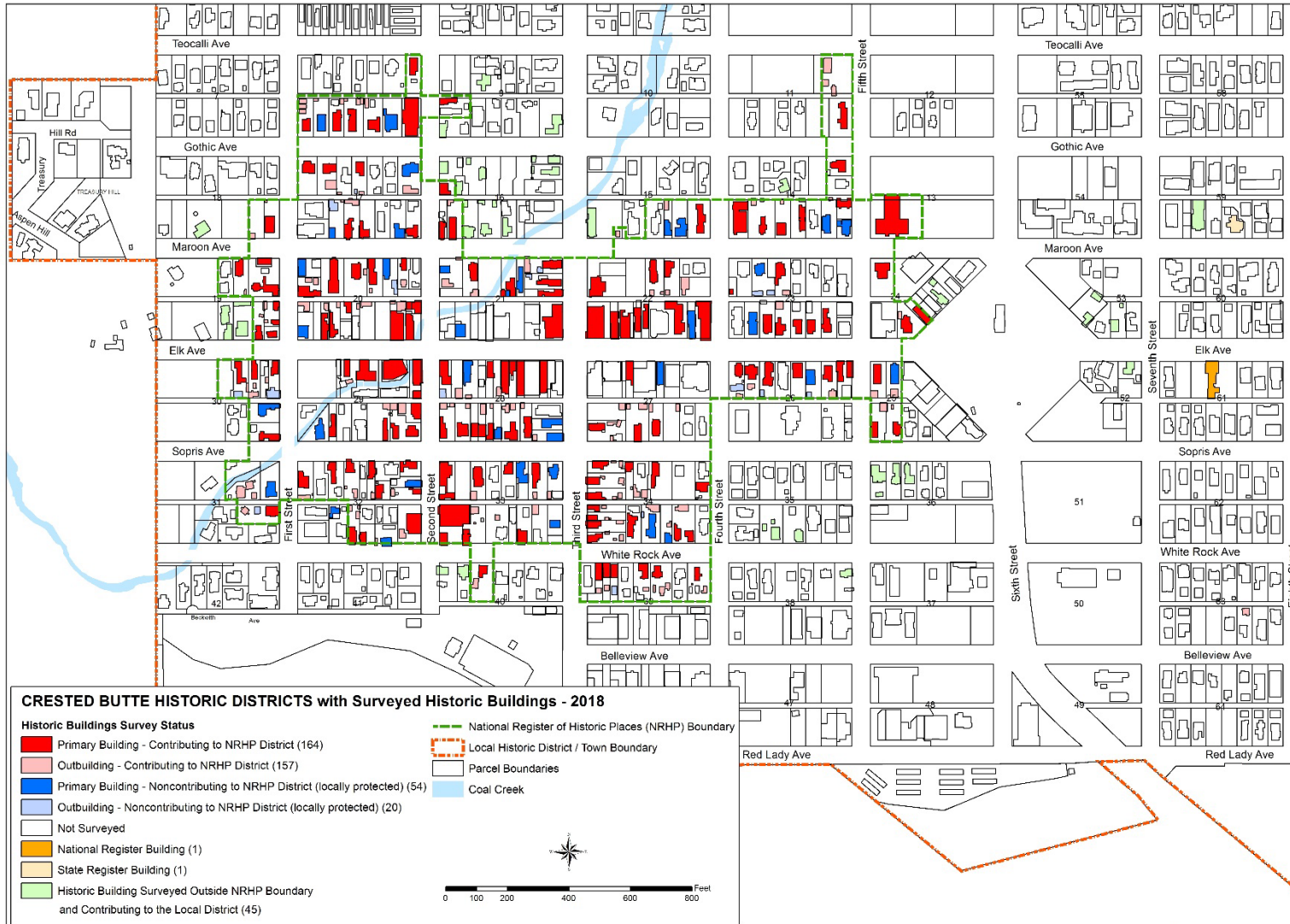
Annual Building Permits

	2009	2010	2011	2012	2013	2014	2015	2016	2017	2018	2019	2020	2021
Total building permits	49	58	67	68	62	80	98	75	83	103	76	70	100
New housing units	2	5	9	3	8	7	44	11	13	19	38	10	16
Net new housing units (new units minus lost units)	2	5	9	2	8	6	44	6	13	19	38	10	16

Permit Value (in millions of dollars)

	2009	2010	2011	2012	2013	2014	2015	2016	2017	2018	2019	2020	2021
New residential	0.626	3.979	5.185	0.983	6.279	5.158	6.089	4.696	8.082	7.560	12.206	9.842	12.190
Residential repair/remodel	1.250	1.298	2.855	3.454	1.854	3.463	4.327	2.548	2.892	0.882	2.018	2.955	4.490
New commercial	0.000	0.000	0.191	0.000	0.000	1.137	6.028	0.045	0.000	2.525	0.000	0.000	6.495
Commercial repair/remodel	2.849	1.485	0.844	1.112	0.733	0.434	2.869	0.273	0.247	0.071	3.012	0.729	1.517
Mobile homes	0.005	0.067	0.000	0.000	0.000	0.000	0.000	0.060	0.000	0.000	0.000	0.120	0.000
Public facilities	0.000	1.400	1.285	0.115	0.000	0.000	0.000	0.050	13.323	0.000	0.147	0.000	0.129
Total	4.731	8.229	10.360	5.664	8.866	10.211	19.961	7.605	24.545	11.038	17.383	13.647	25.271

Source: Town of Crested Butte Building Department



CONSUMER CHARACTERISTICS

Earnings by Industry, Gunnison County (in thousands of dollars)

	2009	2010	2011	2012	2013	2014	2015	2016	2017	2018
Farm Earnings	671	200	1,062	284	1,708	2,858	3,354	2,395	1,100	2,517
Forestry, fishing, and related activities	(D)	869	(D)	(D)	870	770	(D)	(D)	686	721
Mining Earnings	(D)	82,266	(D)	(D)	71,771	47,904	(D)	(D)	35,431	43,720
Utilities Earnings	4,700	4,750	4,395	4,222	4,377	4,786	5,231	5,577	5,816	6,216
Construction Earnings	51,497	45,203	44,471	43,655	51,746	53,614	53,558	54,362	61,876	68,067
Manufacturing Earnings	4,130	3,127	3,196	3,563	4,286	5,201	5,635	5,496	6,302	6,773
Wholesale Trade Earnings	2,279	2,581	3,287	3,637	3,790	3,233	3,306	3,459	4,294	4,337
Retail Trade Earnings	28,670	25,326	25,583	26,555	27,478	29,656	31,765	33,698	35,408	37,194
Transportation & Warehousing Earnings	4,890	4,113	3,672	3,012	4,095	4,149	8,572	16,062	22,368	25,361
Finance & Insurance Earnings	11,322	10,377	8,383	9,195	8,204	8,137	8,717	10,009	11,135	11,493
Real Estate and Rental and Leasing	7,738	6,805	6,359	7,555	10,313	13,006	16,414	16,306	16,440	16,710
Accommodation & Food Services	24,667	22,731	23,476	24,648	26,157	31,779	35,800	38,797	42,651	44,294
Gov't & Gov't. Enterprises Earnings	97,213	98,571	98,497	98,768	98,707	104,422	111,229	118,653	124,472	131,812

(D) not shown by U.S. Bureau of Economic Analysis to avoid disclosure of confidential information

Source: U.S. Bureau of Economic Analysis, Table CAINC5N (May, 2021)

Per Capita Personal Income (Dollars)

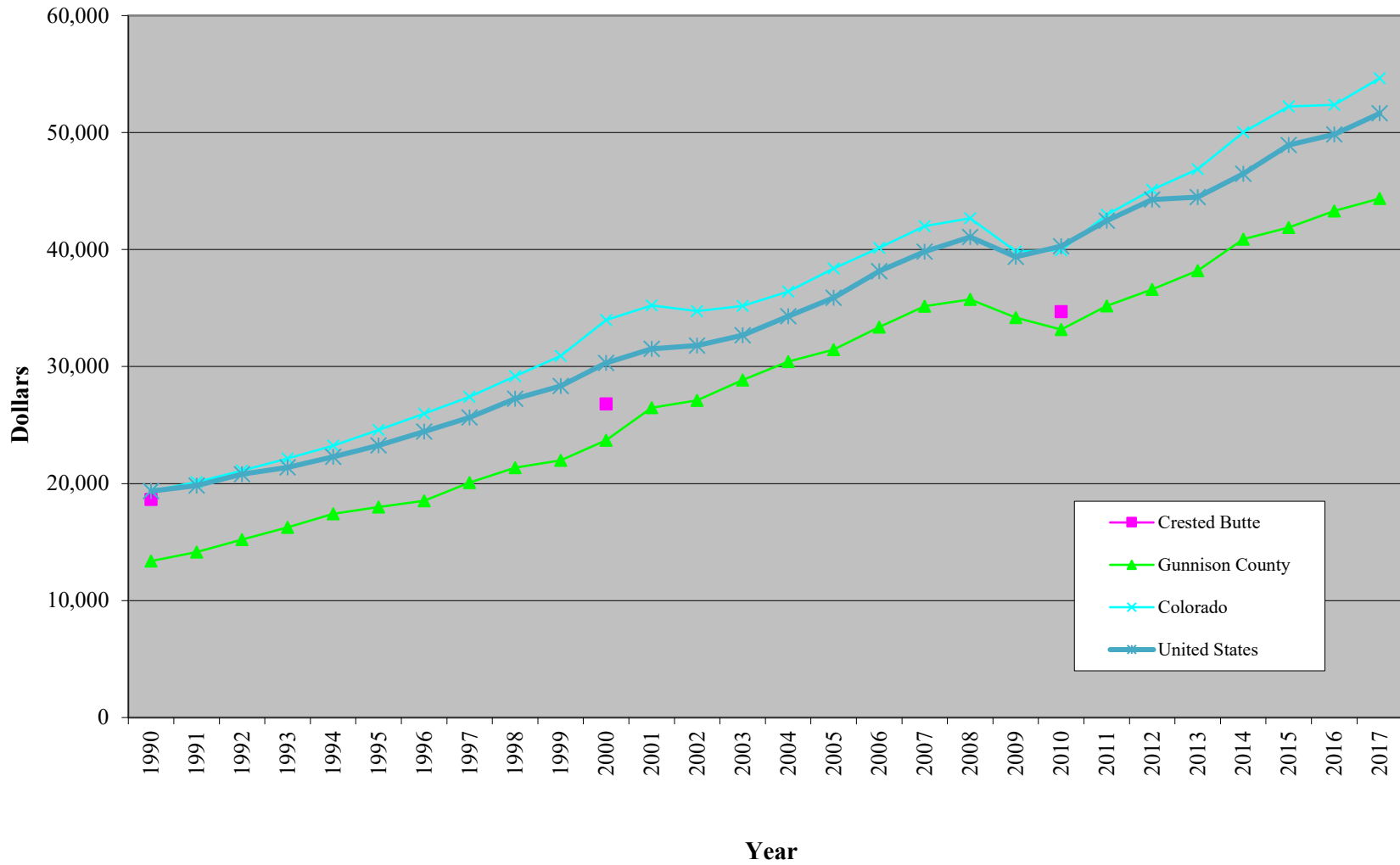
	2008	2009	2010	2011	2012	2013	2014	2015	2016	2017	2018	2019
Gunnison County	35,736	34,188	33,162	35,188	36,600	38,202	40,893	41,888	43,294	45,438	47,962	48,853
Colorado	42,663	39,838	39,930	42,972	45,120	46,869	50,021	52,228	52,372	55,604	58,896	61,157
U.S.	41,082	39,376	40,278	42,463	44,283	44,489	46,486	48,940	49,831	52,118	54,606	56,490

Source: U.S. Bureau of Economic Analysis, Table CA1, SA1 (May, 2021)

	1990	2000	2010
Crested Butte	18,646	26,798	34,690

Source: 1990, 2000 and 2010 Census

Per Capita Personal Income (dollars)



	Crested Butte		Gunnison County		Colorado	
	<u>1999</u>	<u>2012</u>	<u>1999</u>	<u>2013</u>	<u>1999</u>	<u>2013</u>
Per Capita Income	\$ 26,789		\$ 21,407	\$37,098	\$ 24,049	\$46,897
Median Family Income	\$ 49,118		\$ 51,950	\$73,500	\$ 55,883	\$72,100
Median Household Income	\$ 41,250	\$ 59,342	\$ 36,916		\$ 47,203	

Source: 1999 data - U.S. Bureau of the Census, Census 2000.

2013 data – Per Capita Income from U.S. Bureau of Economic Analysis

- Median Family Income from FY 2013 HUD Income Limits Documentation System

2012 data – Median Household Income for Crested Butte is based on the Gunnison County Median Family Income and the 1999 Gunnison County Housing Needs Assessment which found the Median Household Income to be \$40,000 in Crested Butte in 1999.

Size of Buying Groups

% of Households by Disposable Income, 2012

	< \$15,000	\$15,000- 24,999	\$25,000- 34,999	\$35,000- 49,999	\$50,000- 74,999	\$75,000- 99,999	\$100,000- 149,999	\$150,000- 199,999	\$200,000+	
Gunnison County	13.0	14.1	15.4	18.2	21.1	8.3	7.4	1.6	0.9%	
Colorado	13.1	11.8	13.4	16.7	20.6	11.0	9.9	2.1	1.4%	

Note: Disposable Income is after-tax household income. Disposable income for 2012 is a forecast based on the Current Population Survey, U.S. Census Bureau.

Source: U.S. Census Bureau, Census 2010 Summary File 1. ; Source: www.businessdecision.info

LABOR FORCE

Employment by Industry – Gunnison County (number of people)

	2010	2011	2012	2013	2014	2015	2016	2017	2018	2019
Farm Employment	272	278	283	292	295	301	310	334	321	320
Forestry, Fishing, & Related Activities	81	(D)	(D)	90	88	(D)	(D)	88	92	(D)
Mining	853	(D)	(D)	820	550	(D)	(D)	453	449	493
Utilities	66	57	58	55	57	64	67	68	65	63
Construction	1,103	1,030	1,000	1,044	1,056	1,102	1,191	1,266	1,341	1,373
Manufacturing	149	159	176	178	174	173	218	236	231	225
Wholesale Trade	74	91	87	89	110	116	103	114	110	103
Retail Trade	1,083	1,124	1,118	1,129	1,153	1,184	1,250	1,277	1,268	1,286
Transportation & Warehousing	124	131	128	130	143	153	158	191	176	198
Finance & Insurance	389	423	390	389	331	354	402	383	422	424
Real Estate & Rental & Leasing	1,005	977	991	1,017	1,017	1,097	1,181	1,190	1,222	1,264
Accommodations and Food Services	1,435	1,415	1,371	1,434	1,560	1,640	1,705	1,759	1,720	1,711
Government	2,045	2,048	2,058	2,019	2,050	2,100	2,186	2,284	2,331	2,367
Total Employment	12,095	12,091	12,070	12,294	12,386	12,727	13,367	13,785	14,078	14,292

Source: U.S. Bureau of Economic Analysis, Table CAEMP25N (May, 2021)
(D) not shown to avoid disclosure of confidential information

Local Hourly Wages by Occupation – Southwest Colorado (May, 2017)

	Entry Level (10 th percentile)	Mean (Average)	Experienced (90 th percentile)
Accountants & Auditors	\$16.12	\$33.54	\$62.14
Bookkeeping	9.65	17.65	27.97
Cashier	9.36	11.54	15.41
Electrician	20.91	28.25	36.20
Plumber	15.42	21.81	29.91
Secretary	9.66	16.56	23.99

Source: Bureau of Labor Statistics (January, 2019)

LAND USE

Designated Land Use in Crested Butte

	<u>Acres</u>	<u>Percentage</u>	
Residential	128.6	23.3%	Residential
Residential vacant	15.2		
Business & Tourist	26.0	4.7%	Business
Business vacant	3.6		
Commercial / Light Industrial	7.0	1.2%	Commercial
Commercial / Light industrial vacant	1.5		
Public	294.7	53.4%	Public (46.6% parks and open space)
Verzuh Open Space	40.5		
Town Ranch	173.6		
Parks and Public Open Space	43.3		
Schools	12.9		
Churches	1.7		
Other	22.7		
Roads, alleys and right-of-ways	95.1	17.2%	Roads
Total	551.9 Acres		

Source: Crested Butte Geographic Information Department. Revised October, 2021

SALES

Taxable Sales (in millions of dollars)

	2007	2008	2009	2010	2011	2012	2013	2014	2015	2016	2017	2018	2019	2020	2021
Crested Butte	55.2	53.1	48.3	49.3	53.5	55.4	60.2	70.1	79.2	82.3	90.0	94.2	99.9	103.8	124.4
(% Change)	(4.7)	(-2.4)	(-9.1)	(2.0)	(8.5)	(3.6)	(8.7)	(16.4)	(12.9)	(3.9)	(9.3)	(4.7)	(6%)	(4%)	(20%)
Mt. Crested Butte	35.9	37.1	31.4	29.8	31.5	30.4	36.1	41.9	44.29	46.09					
(% Change)	(-6.2)	(3.4)	(-15.5)	(-5.0)	(6.9)	(-3.5)	(18.9)	(16.0)	(5.8)	(4.1)					

Source: Crested Butte Finance Department and Mt. Crested Butte Finance Officer

Retail Sales (in millions of dollars)

	2006	2007	2008	2009	2010	2011	2012	2013	2014	2015	2016	2017	2018	2019	2020
Crested Butte	91.5	95.7	90.6	79.7	80.9	85.0	84.1	91.4	110.4	187.3	136.7	148.7	151.9	149.3	167.8
(% Change)	(23.8)	(4.6)	(-5.3)	(-12.0)	(1.5)	(5.1)	(-1.1)	(8.7)	(20.8)	(69.7)	(-27.0)	(8.8)	(2.1)	(-1.7)	(12.4)
Mt. Crested Butte	31.9	30.6	33.0	28.2	28.1	30.3	29.2	32.8	39.4	41.1	40.6	43.7	45.8	45.2	43.1
(% Change)	(17.1)	(-4.2)	(8.0)	(-14.7)	(-0.4)	(7.8)	(-3.4)	(12.2)	(20.0)	(4.5)	(-1.3)	(7.7)	(4.7)	(-1.3)	(-4.7)

Source: Colorado Department of Revenue, Research Analysis and Statistics Dept. (May, 2021).

BUSINESS IN CRESTED BUTTE AREA**Major Employers in East River Valley**

	Year Round	# Employees		Product / Service
		Summer only	Winter only	
Gunnison Watershed School District (2008)	300	0	0	K - 12 Education
Crested Butte Mountain Resort (ski area) (2011)	102	259	872	Ski resort
Elevation Hotel and Spa (2011)	3	29	36	Resort hotel
The Grand Lodge (2011)	2	38	36	Resort hotel
The Lodge at Mountaineer Square (2011)	8	23	30	Resort hotel
Town of Crested Butte (2019)	49	9	2	Municipal government
Town of Mt. Crested Butte (2013)	19	15	2	Municipal government
Mountain Express (2019)	12	27	31	Shuttle bus service (27 drivers work both winter & summer)
The Club at Crested Butte (2008)	20	0	0	Golf, restaurant, and fitness facility

Commercial Banks (millions of dollars) – as of December 31st

Bank of the West (all branches)	2005	2010	2011	2012	2013	2014	2015	2016	2017	2018	2019	2020
Total Assets	55.2	57.7	62.4	63.3	66.5	71.7	75.7	83.7	89.8	87.3	92.9	96.1
Total Liabilities	46.8	47.0	51.2	51.7	54.8	59.8	63.6	71.6	77.6	75.1	80.0	82.0
Total Equity	8.3	10.6	11.2	11.7	11.7	11.9	12.1	12.2	12.1	12.2	12.9	14.0
Community Banks of Colorado	2005	2010	2011	2012	2013	2014	2015	2016	2017	2018	2019	2020
Total Assets	1,049.7	1,575.7	6,352.0	5,410.8	4,914.1	4,819.6	4,683.9	4,573.0	4,843.5	5,676.7	5,895.5	6,659.9
Total Liabilities	948.7	1,521.0	5,263.3	4,320.2	4,016.2	4,025.0	4,066.3	4,036.9	4,311.1	4,981.7	5,128.6	5,839.3
Total Equity	101.1	54.6	1,088.7	1,090.6	897.8	794.6	617.5	536.2	532.4	695.0	766.9	820.7
(all branches)												
(Community Banks of Colorado was acquired by National Bank Holdings Corporation in 2011. Beginning in 2011, values are for all subsidiaries of NBH Corp.)												
Gunnison Bank and Trust	2005	2010	2011	2012	2013	2014	2015	2016	2017	2018	2019	2020
Total Assets	57.6	67.8	70.3	71.3	76.1	75.6	81.1	87.2	94.6	98.1	122.9	156.7
Total Liabilities	52.8	61.4	63.8	64.5	69.0	68.2	73.7	79.1	86.0	88.7	111.2	142.5
Total Equity	4.8	6.4	6.5	6.9	7.0	7.4	7.5	8.1	8.6	9.5	11.7	14.1
(Gunnison and Crested Butte branches combined)												
Gunnison Savings & Loan (as of Sept 30th)	2005	2010	2011	2012	2013	2014	2015	2016	2017	2018	2019	2020
Total Assets	87.4	106.7	104.1	106.9	108.1	109.3	105.6	107.3	106.2	101.1	103.2	102.5
Total Liabilities	78.8	96.9	94.2	96.9	98.0	99.1	95.1	96.2	94.9	89.4	90.8	89.7
Total Equity	8.6	9.8	9.8	10.0	10.1	10.2	10.5	11.0	11.3	11.7	12.4	12.8
(Gunnison and Crested Butte branches combined)												

Support Services in the Crested Butte Area (CB South to Mt. CB)

Type	Number		
Accounting Services	4	Education	2
Ad agencies	0	Electrical Contractors	5
Antiques.....	0	Employment Agencies.....	0
Appraisers.....	0	Engineers, Civil	2
Architects and Drafting	8	Engineers, Soil.....	1
Art Galleries	7	Engineers, Structural	2
Attorneys	7	Engineers, Water	1
Auto Body Shops.....	0	Excavating Contractors.....	6
Auto Glass	0	Financial Services.....	2
Auto Repair Shops.....	2	Florists	2
Auto Sales.....	0	Furniture	2
Auto Towing.....	1	Gas Stations	2
Banks	4	General Contractors.....	49
Bed & Breakfasts.....	4	Grocery Stores	2
Book Dealers	1	Guide Services.....	7
Bookkeeping.....	6	Hair Salons / Personal Care	10
Building Materials	7	Health Clubs	1
Caterers.....	2	Home Maintenance.....	13
Child Care.....	2	Hospitals	0
Chiropractors	2	Hotels, Lodges, Hostel.....	4
Clothing Repair	0	Insurance Agents	3
Collection Agencies.....	0	Interior Designers	6
Computer Sales / Service.....	1	Landscape Architects.....	0
Concrete Contractors	2	Landscape Contractors.....	14
Counseling.....	1	Laundries	1
Crane Services	1	Liquor Stores	2
Credit Unions.....	0	Marketing Companies.....	0
Dance / Yoga / Pilates	4	Massage	17
Dentists / Doctors / Health.....	20	Mortgage Companies.....	0
Dry Cleaning	0	Newspapers.....	1
Drywall Contractors	2	Office Supplies	1
		Painting Contractors	13
		Paving Contractors.....	0
		Pharmacies.....	0
		Photographers	3
		Photographic Labs	0
		Physical Therapy	2
		Plumbing Contractors	6
		Printers	2
		Property Managers.....	17
		Publishers.....	0
		Real Estate Offices	12
		Rental Centers	2
		Restaurant / Bar	35
		Retail Shops.....	44
		Roofing Contractors.....	4
		Sand and Gravel Suppliers.....	0
		Sawmill	1
		Shipping Service.....	1
		Surveyors.....	2
		Telephone Companies	0
		Temporary Help Services	0
		Theaters	3
		Title Companies.....	1
		Transportation/ Delivery.....	2
		Travel Agencies.....	0
		TV	2
		Veterinarian	1
		Video Rentals	1
		Waste Disposal	2
		Web Design	2
		Welding Shops.....	1

Additional services are available in Gunnison (population 5, 461), located 28 miles south of Crested Butte
 Source: Town of Crested Butte Business Licenses. Revised December, 2012

GOVERNMENT

Type of Local Government in Crested Butte: Home Rule Town

Comprehensive Plan	yes	Performance Standards	no
Air Pollution Standards	yes	Watershed Standards	yes
Zoning Ordinance	yes	Architectural Review Standards	yes
Noise Standards	no	Subdivision Regulation	yes

Fire /Marshals/Town Employees (2019)

	-----Number of Employees-----			
	Full Time	Part Time/Seasonal	Volunteer	
Fire Department	6	0	40	(Fire Insurance Rating = 5)
Marshal's Office	9			
Town Employees	49	9	2	

Community Budget

	1994	1995	1996	1997	1998	1999	2000
Annual Budget:	\$3,120,645	\$3,353,134	\$5,941,978	\$5,071,052	\$4,116,827	\$4,320,503	\$4,345,247
	2001	2002	200	2004	2005	2006	2007
	\$5,193,667	\$7,381,615	\$4,753,116	\$6,928,963	\$6,333,041	\$6,728,325	\$8,698,887
	2008	2009	2010	2011	2012	2013	2014
	\$8,161,436	\$5,989,698	\$8,575,668	\$9,854,138	\$7,428,494	\$6,870,079	\$7,156,764
	2015	2016	2017	2018	2019	2020	2021
	\$10,205,072	\$8,823,733	\$17,752,490	\$14,058,302	\$15,211,547	\$11,740,906	\$11,071,368

(Sources: General Fund, Capital Fund, Street Fund, Sewer and Water Fund, and Sales Tax/Transportation, Affordable Housing)

Primary Sources of General Fund Revenue (Percentage):

	2000	2005	2010	2011	2012	2013	2014	2015	2016	2017	2018	2019	2020	2021
Sales and Use tax	52%	67%	60%	69%	68%	70%	71%	67%	75%	73%	72%	72%	72%	73%
Property Tax	7%	6%	7%	7%	7%	7%	7%	7%	6%	6%	6%	6%	6%	6%
State	4%	2%	2%	2%	2%	2%	2%	2%	3%	3%	2%	3%	3%	3%
Other Local	37%	26%	31%	22%	23%	21%	20%	25%	17%	19%	20%	19%	19%	18%

Mill Levies / Property Tax Rates (per \$1,000 Assessed Valuation):

	1980	1985	1990	1995	2000	2005	2010	2015	2018	2019	2020
Crested Butte	14	10.87	15.73	8.16	9.976	9.109	8.395	10.633	10.668	10.304	10.372
Gunnison County	13.1	14.20	15.76	13.88	13.109	12.272	10.240	15.674	17.145	15.355	16.226
REIJ School District	36.27	40.84	38.30	40.32	31.836	24.609	23.926	31.886	30.161	28.868	28.711
Colorado River Water District	.37	.465	.429	.383	.283	.230	.188	.243	.256	.235	.502
CB Fire Protection District	5.315	9.933	5.698	3.302	4.103	5.475	3.799	4.514	8.139	12.145	7.687
Metropolitan Recreation District	.678	.737	.77	.672	.676	.535	.321	.557	1.000	1.000	1.000
UGR Water Conservancy Dist	.18	.196	3.038	1.091	2.000	2.00	1.770	1.951	1.951	1.951	1.951
Total Crested Butte	69.913	77.245	79.725	67.804	61.983	54.230	48.639	65.458	69.320	69.858	66.449
Mt. Crested Butte	0	6.2384	5.001	3.888	10.378	8.300	10.378	10.378	10.378	10.378	10.378
Mt. Crested Butte Water & San			13.764	9.965	10.776	9.585	6.925	11.254	11.770	10.23	10.415

Source: Gunnison County Assessor Abstract of Assessments and Levies

Assessed Valuation for Crested Butte (\$1,000)

1995	1996	1997	1998	1999	2000	2001	2002	2003	2004	2005	2006
32,079	32,348	34,639	34,622	37,172	37,560	47,132	48,465	51,638	62,907	62,907	63,860
2007	2008	2009	2010	2011	2012	2013	2014	2015	2016	2017	2018
103,108	104,694	106,711	106,373	84,932	83,984	79,564	79,288	87,290	86,570		96,030
2019	2020										
114,886	115,551										

Source: Gunnison County Assessor Abstract of Assessments and Levies

Total Sales Tax in Crested Butte (\$)

2000	2001	2002	2003	2004	2005	2006	2007	2008	2009
1,657,399	1,535,089	1,471,496	1,480,433	1,721,824	1,887,237	2,107,010	2,176,131	2,124,971	1,936,765
2010	2011	2012	2013	2014	2015	2016	2017	2018	2019
1,973,510	2,140,795	2,217,714	2,408,395	2,829,392	3,169,296	3,725,739	3,981,095	4,205,150	4,427,075
2020	2021								
4,599,333	5,519,950								

Source: Town of Crested Butte Finance Department

Sales Tax

Town of Crested Butte	4.5%
Short-Term Rental Excise Tax	5.0%
Gunnison County	1%
State	2.9%
RTA	1.0%

Income Tax

Town of Crested Butte	0%
Town of Mt. Crested Butte	0%
Gunnison County	0%
State (2018)	4.63%

Other Taxes

Corporate Franchise Tax	3%
Machinery and Equipment Tax	0%
Inventory Tax	0%
Auto use Tax	4.5%
Building Use Tax	4.5%
Real Estate Transfer Tax	3%
Personal Commercial Property Tax	29% x mill levy

Business Occupation Licensing Tax

\$100 / year for all businesses except lodging
Lodging: \$10/pillow

Other Required Business Expenses:

Unemployment Compensation Rate: varies with each type of business (minimum benefit 100%)
Workers Compensation Rate (average): varies with each type of business (minimum benefit 100%)

Bond Rating: None

UTILITIES

Water (2019)

Source:	Coal Creek	Average Daily Demand:	0.33 MGD
Treated Water Storage:	1.1 M Gallons	Pumping Capacity:	N/A
Raw Water Storage:	10.0 M Gallons	Total Hardness	Less than 25 ppm
Peak Demand:	0.75 MGD		

Wastewater Treatment (2022)

Treatment Capacity:	0.75 MGD
Peak Demand:	0.64 MGD
Average Daily Flow:	0.21 MGD

Water and Sewer Rates (2022):

	Water	Sewer
Base Rate:	\$37.50/EQR/ Month, first 8,000 gal.	\$48.50 / EQR / Month
Water and Sewer Tap Fee:	\$10,200 water + \$12,600 sewer per EQR \$3,400 water + \$4,200 sewer per EQR for each deed restricted affordable housing unit.	

Solid Waste

Service Provider:	Waste Management (888)-964-9740
Address:	P.O. Box 167, Crested Butte, CO 81224
Disposal Site:	Gunnison County Landfill (970)-641-5522

Rates (2022):

Residential (inside town limits):	\$25.42 / month / EQR (includes tin, aluminum, newspaper, magazine, and brown glass recycling)
Business:	rates vary based on container size and frequency of pickup:

Natural Gas

Supplier: Atmos Energy
Address: P.O. Box 930, Gunnison, CO 81230

Natural Gas Available: yes no
New Hookups Available: yes no

Rates (January, 2022):

Residential: \$11.60 facility demand plus
\$ 0.56621 Gas Cost Adjustment / CCF

Commercial: \$28.24 facility demand plus
\$ 0.56621 Gas Cost Adjustment / CCF

8% State, Town and County Sales tax.

Electrical Power

Supplier: Gunnison County Electric Association
Address: P.O. Box 180, Gunnison, CO 81230

Supplier: municipal private co-op
Generating Capacity: local wholesaler

Rates (2022):

Residential (General Service): \$29.00 consumer charge plus \$0.12918 per kWh
Residential (Large Power) (50-750 kW): \$145.00 consumer charge plus \$0.05718 per kWh plus \$15.55 demand charge

Telephone

Supplier: CenturyLink
To order phone service: 1-800-475-7526
General customer service: 1-800-491-0118
Website: <http://www.centurylink.com/>

EDUCATION

Crested Butte Community School Enrollment (October count)

	SCHOOL YEAR									
	2000/01	2005/06	2010/11	2015/16	2016/17	2017/18	2018/19	2019/20	2020/21	2021/22
<u>Elementary</u>										
K	24	32	59	57	39	62	45	45	51	54
1	31	33	50	63	57	41	64	44	59	52
2	31	37	55	67	65	56	44	68	51	63
3	29	31	51	50	66	70	59	47	70	48
4	26	41	56	48	51	67	69	62	50	70
5	<u>26</u>	<u>29</u>	<u>37</u>	<u>71</u>	<u>48</u>	<u>49</u>	<u>71</u>	<u>75</u>	<u>64</u>	<u>48</u>
Subtotal	167	203	308	356	326	345	352	341	345	335
<u>Middle</u>										
6	22	35	38	51	71	53	52	76	74	67
76 74	7		31.5	28	39	57	50	65	76	74
8	<u>29</u>	<u>22</u>	<u>31</u>	<u>49</u>	<u>62</u>	<u>48</u>	<u>68</u>	<u>58</u>	<u>51</u>	<u>78</u>
Subtotal	82.5	85	108	157	183	166	175	188	201	219
<u>High School</u>										
9	22	22	46	56	55	60	51	67	50	44
10	21	22	28	39	55	50	66	56	68	48
11	26	15	29	37	42	52	50	69	57	57
12	<u>26</u>	<u>25</u>	<u>34</u>	<u>44</u>	<u>43</u>	<u>42</u>	<u>55</u>	<u>51</u>	<u>70</u>	<u>54</u>
Subtotal	95	84	137	176	195	204	222	243	245	203
TOTAL	344.5	372	553	689	704	715	749	772	791	757

Source: Gunnison Watershed School District RE-1J

Other Educational Facilities in the Area

<u>Facilities in Upper East River Valley</u>	<u>Location</u>
Rocky Mountain Biological Laboratory	Gothic
<u>Preschools in Upper East River Valley</u>	
Paradise Place	Crested Butte
Stepping Stones	Crested Butte
Little Red Schoolhouse	Crested Butte South
<u>Universities</u>	
Western Colorado University	Gunnison

TRANSPORTATION

Distance and Travel Time for Goods in Transit

	Miles	Days by Motor Freight
Atlanta	1576	6
Aspen	91	2
Chicago	1250	6
Dallas	870	5
Denver	185	1
Kansas City	790	4
Los Angeles	970	5
New York	2088	6
Phoenix	660	5
Seattle	1300	5

Motor Freight Carriers

RAC Transport Co., Inc.	(719) 539-7687
UPS	(970) 641-3277
Fed Ex	(800) 463-3339
XPO Logistics	(844) 742-5976

Railroads

None

Airline Facilities

Location: Gunnison
 Served By: United (Denver)
 United (Houston) – summer and winter months
 American Airlines (Dallas/Ft. Worth) – winter months

Other Airport Facilities

Avis Rent-a-Car:	641-0263
Budget Rent-a-Car:	641-4403
Hertz Rent-a-Car:	641-2881

Bus Lines

Alpine Express and RTA: 641-5074
 area served: Gunnison, Crested Butte, Mt. Crested Butte
 Mountain Express: 349-5616
 area served: Crested Butte and Mt. Crested Butte

CLIMATE

	<u>January</u>	<u>July</u>	<u>Annual</u>
Average Monthly Maximum Temperature (°F)	27.8	76.0	51.5
Average Monthly Minimum Temperature (°F)	- 4.4	38.5	17.9
Average Monthly Temperature (°F)	11.7	57.3	34.7
Average Total Precipitation (inches)			23.46
Average Total Snowfall (inches)			197.5

Elevation: 8885 feet above sea level

Source: Western Regional Climate Center, for the period 6/01/1909 – 6/10/2016

COMMUNITY SERVICES

Number of Churches	3
Number of Libraries	1
Number of Parks	11
Miles of Trails	unlimited
Number of Golf Courses	1 (in valley)
Number of Tennis Courts	3 (17 total in the valley)
Number of Swimming Pools	5 in Mt. Crested Butte (all commercial)
Number of Recreation Centers	1 (in Gunnison)

NEWS MEDIA

Local Newspapers

Crested Butte News

Radio

KBUT	Crested Butte
KAYV	Crested Butte
KTPF	Crested Butte
KVLE	Gunnison
KGNI	Gunnison
KEJJ	Gunnison
KVLE	Gunnison
KWSB	Gunnison

Television

Local	CBTV10
Other channels available	3
Cable Available	yes

HOTELS, BED & BREAKFASTS, SHORT TERM RENTAL UNITS

Crested Butte

Hotels and Bed & Breakfasts	9
• Pillows	312
• Rooms	110
Short term rental units	175

Larger Hotels and Accommodation Companies – Crested Butte and Mt. Crested Butte

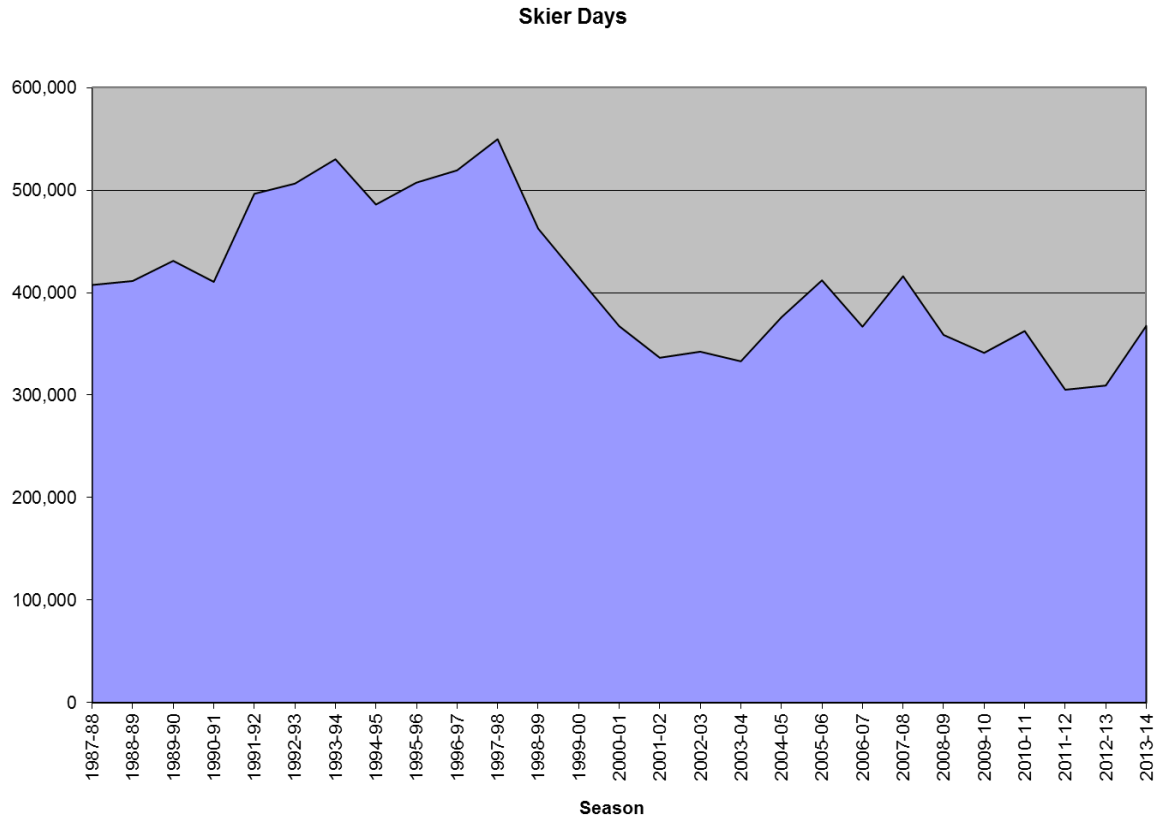
	# of Rooms	Condo Units	Conference Capability	Banquet Capability
The Elevation Hotel	262		Yes	Yes
Elk Mountain Lodge	19		No	No
Old Town Inn	27		No	No
The Grand Lodge	226		Yes	Yes
The Lodge at Mountaineer Square		95	Yes	Yes
WestWall Lodge		44	No	No

MEDICAL INFORMATION

Hospital:	Gunnison Valley Hospital (Gunnison)
Clinics:	5
Number of Doctors in Crested Butte/Mt. Crested Butte:	9
Number of Doctors in Crested Butte/Mt. Crested Butte Associated with the Hospital:	9
Number of Dentists:	3
Number of Nursing Homes:	0 (1 in Gunnison)

CRESTED BUTTE SKI AREA STATISTICS

Season:	1987-88	1988-89	1989-90
Skier Days:	407,453	411,356	431,015
1990-91	1991-92	1992-93	1993-94
410,500	496,382	506,310	530,088
1994-95	1995-96	1996-97	1997-98
485,904	507,309	519,250	549,660
1998-99	1999-00	2000-01	2001-02
462,478	414,642	367,263	336,483
2002-03	2003-04	2004-05	2005-06
342,416	333,011	375,936	412,000
2006-07	2007-08	2008-09	2009-10
366,765	416,009	358,735	341,260
2010-11	2011-12	2012-13	2013-14
362,554	305,290	309,412	367,659



Source: Crested Butte Mountain Resort.
 CBMR no longer shares skier day information.

OTHER VISITOR INFORMATION

Local public transit riders per year (Mountain Express)

1998	1999	2000	2001	2002	2003	2004	2005	2006	2007	2008	2009
903,749	733,605	647,621	508,719	510,063	506,425	537,097	554,729	539,744	604,809	631,740	598,080
2010	2011	2012	2013	2014	2015	2016	2017	2018	2019	2020	
584,738	591,400	560,200	582,100	554,585	684,200	704,500	757,300	689,000	712,042	445,394	

For more information contact the Planning Department in the Town of Crested Butte, P.O. Box 39, Crested Butte, CO 81224