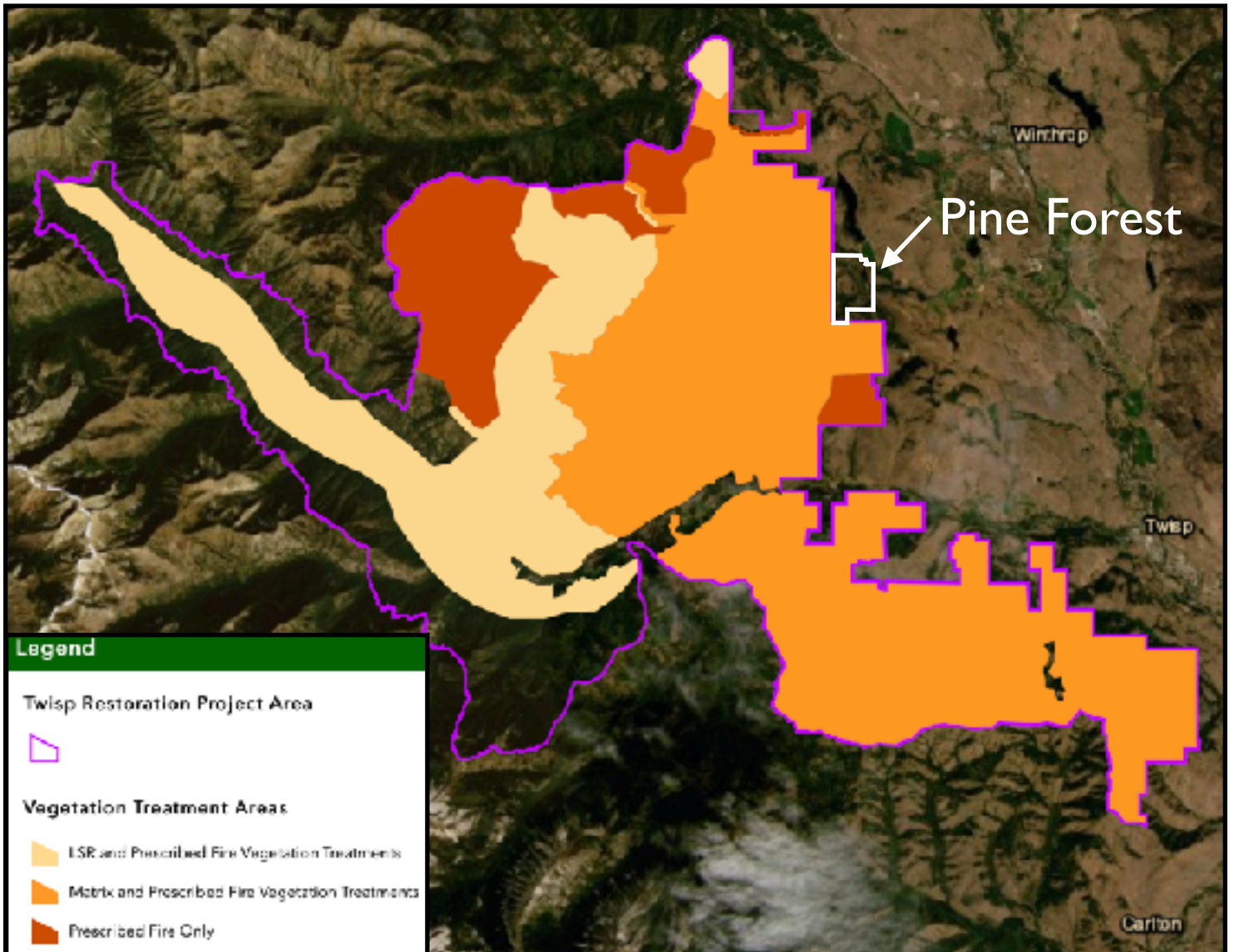


# Figure I: Location of Pine Forest





# Figure 2: Pine Forest



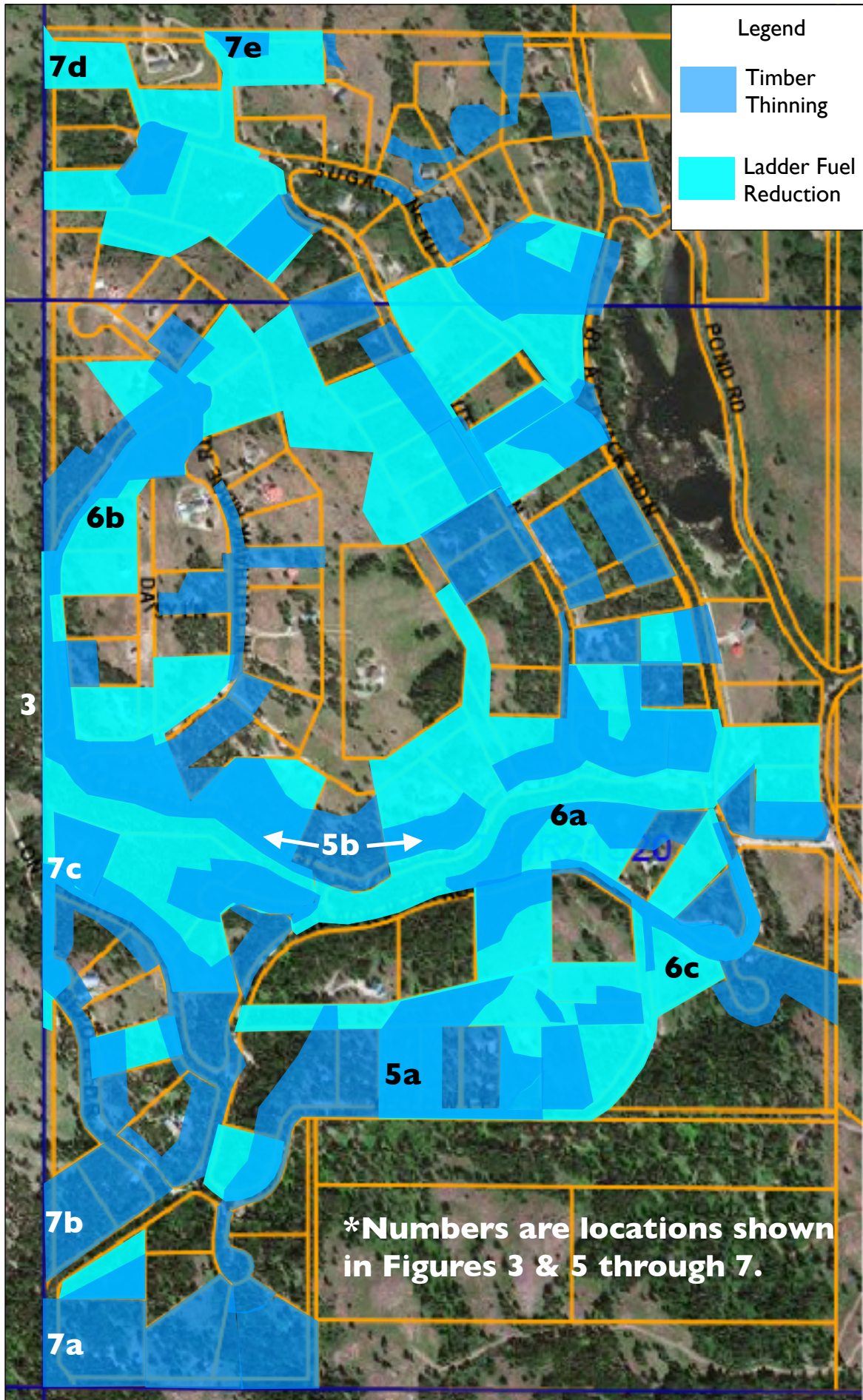


## **Figure 3: Prescribed Burn Area to West of Pine Forest**





# Figure 4: 2014-2019 Pine Forest Fuels Reduction\*





# Figure 5a: Recent Commercial Thinning





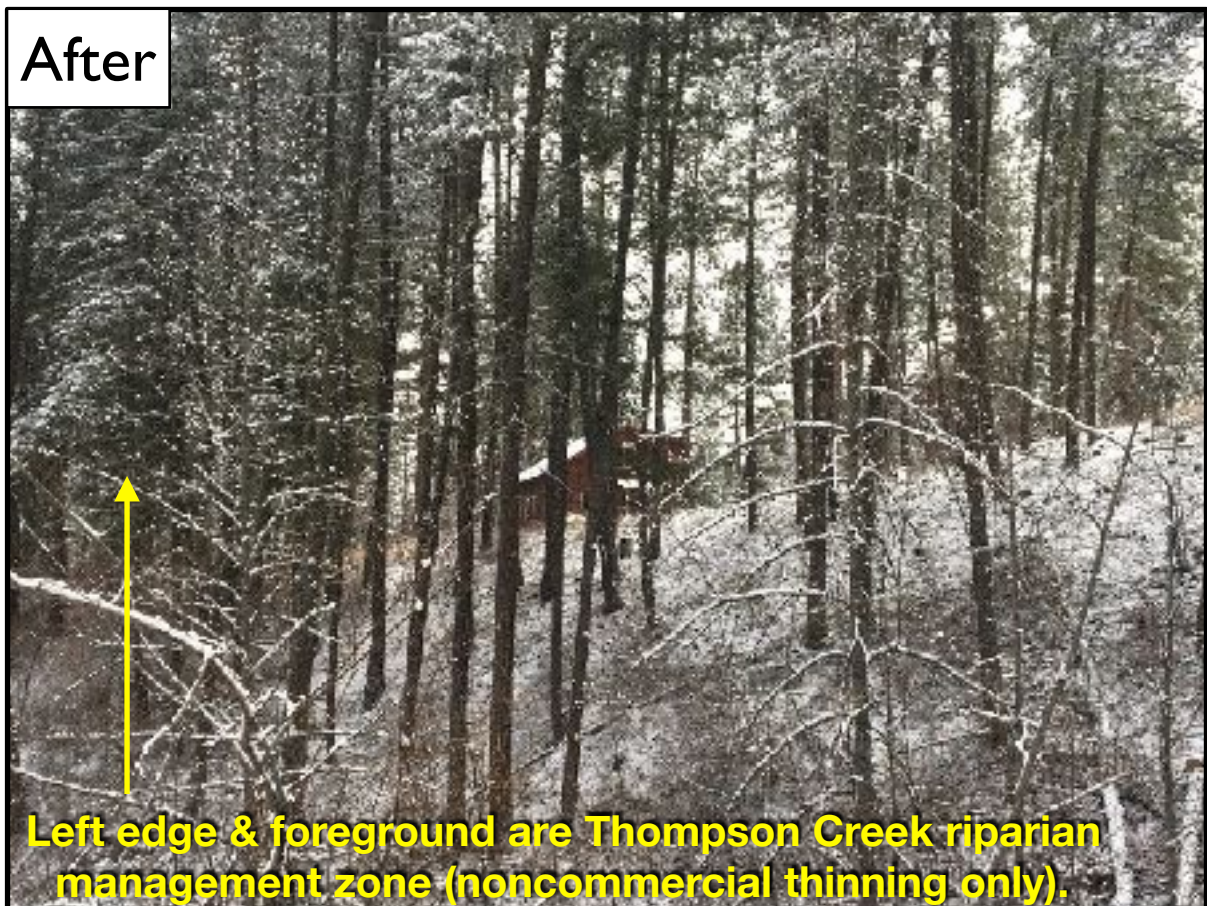
# Figure 5b: Recent Commercial Thinning



Lower left & right are in the Thompson Creek riparian management zone & weren't commercially thinned; noncommercial thinning completed in 2019.



## Figure 6a: Recent Commercial & Noncommercial Thinning





# Figure 6b: Recent Noncommercial Thinning





# Figure 6c: Recent Noncommercial Thinning

Before



After

