

Re: Gate Placement/Relocation on Forest Rd 394

““ The proposal includes two new gates to restrict seasonal access. The gates would be on Forest Road Photo 5 Bottomless arch culvert. Photo credit Dan McKriey, USDA Forest Service 394 (approximate mile posts 0.22 and 1.80). The gates would be placed on concrete foundations which require an approximate 4 by 4 by 5-foot-deep holes. Adequate space for turn arounds would be provided.

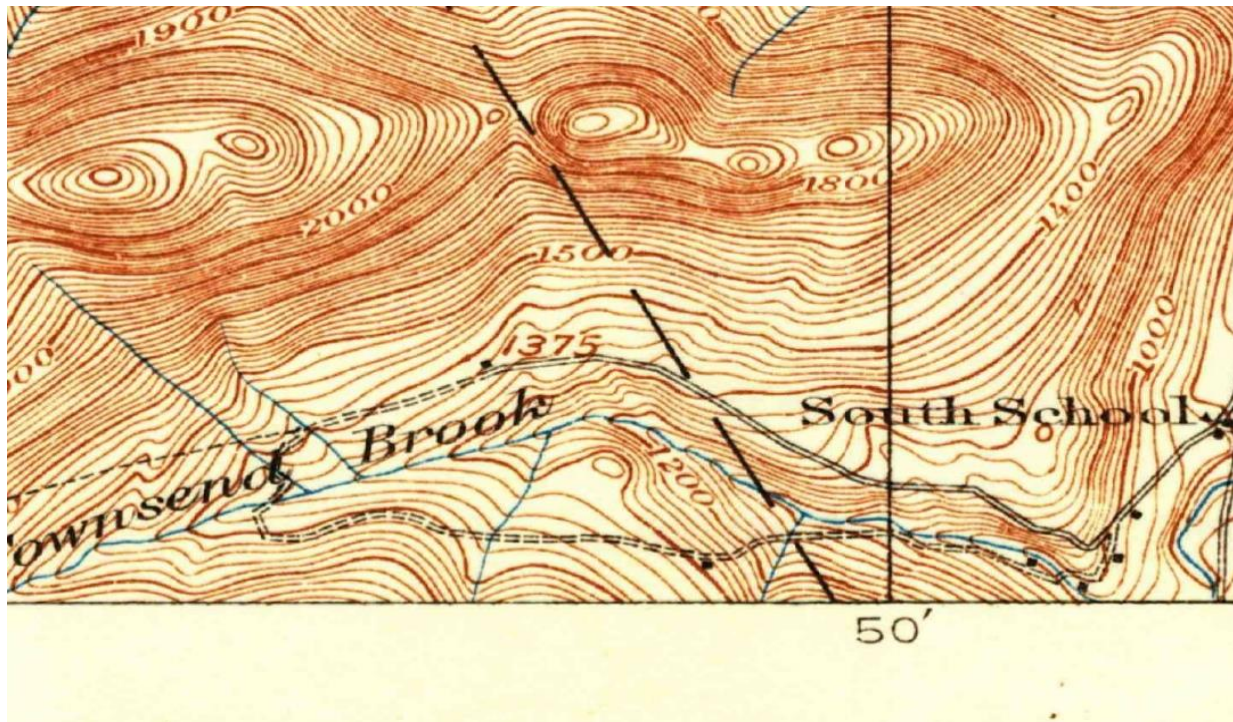
Parking Area Construction

A parking area for three vehicles (approximately 50 feet by 30 feet) would be constructed at mile post 180 on Forest Road 394 (Townsend Brook Road). Parking area construction would not require the

Removal of trees and would require the leveling and resurfacing of the area.””

The proposed gate and parking lot at mile 1.8 would limit access to recreational activities such as hunting and fishing for people who have limited abilities or handicaps. The existing parking lot allows easier access to fishing and hunting areas with less grade. The area selected for the new gate and parking lot has steep banks/grades and limits access to fishing and hunting for limited individuals.

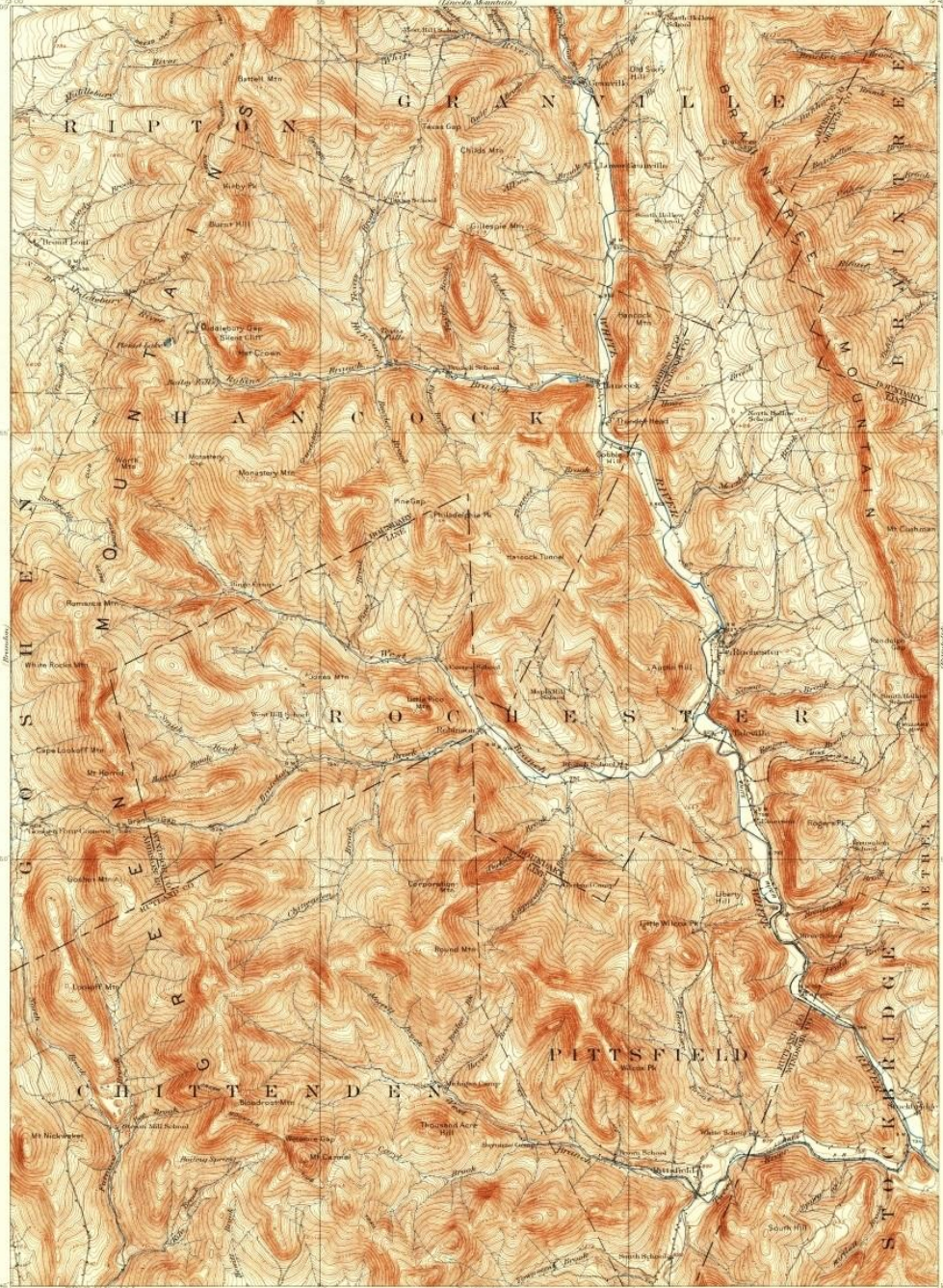
The existing Road continues to an parking lot that has been there for well over 100 years. It could be argued the what you have designated as a trail is actually an existing road. Topo maps from 1915 have the road continuing to meet the Tozier Hill Rd (or what was originally the Old Stage Coach Rd) on the North Side of Tozier Brook. This has been a ROAD for at least 108 years or more. Please see Maps included.



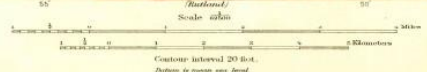
DEPARTMENT OF THE INTERIOR
U.S. GEOLOGICAL SURVEY

STATE OF VERMONT
PERRY H. MERRILL,
STATE GEOLOGIST
(Rochester Quadrangle)

VERMONT
ROCHESTER QUADRANGLE



R. B. Marshall, Chief Geographer
Francis Sutton, Geographer in charge
Topography by Henry Munroe and J. E. Mackay
Control by U. S. Coast and Geodetic Survey
D. M. Baldwin and J. E. Sellschopp
Surveyed in 1888.
SURVEYED IN COOPERATION WITH THE STATE OF VERMONT.



1:62,500
USGS
Historical File
Topographic Division
ROCHESTER, VT.
APR 1 1950

USGS
FILE COPY
TOPOGRAPHIC DIVISION



HISTORICAL

1950

This is an important area of Recreation for many people especially those that have grown up there and are not getting any younger. This gate would limit access and be unfair to those that are limited. Please consider not wasting the money on a gate and parking lot but possibly use it to improve the road and parking lot that exists.

Thank You,

The LIMITED AND OLD/GETTING OLD FOLKS WHO Recreate in the Townsend Brook Valley