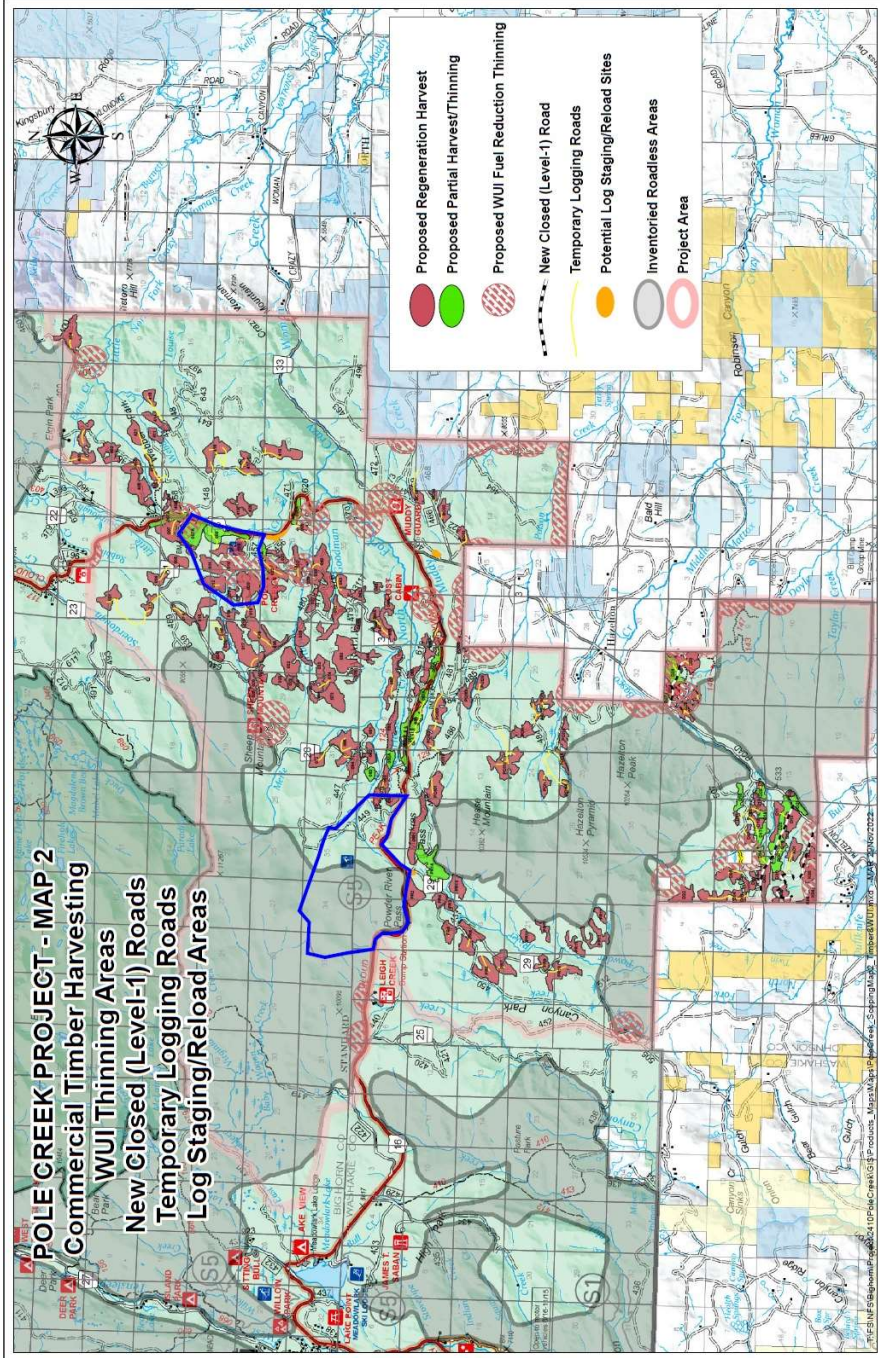
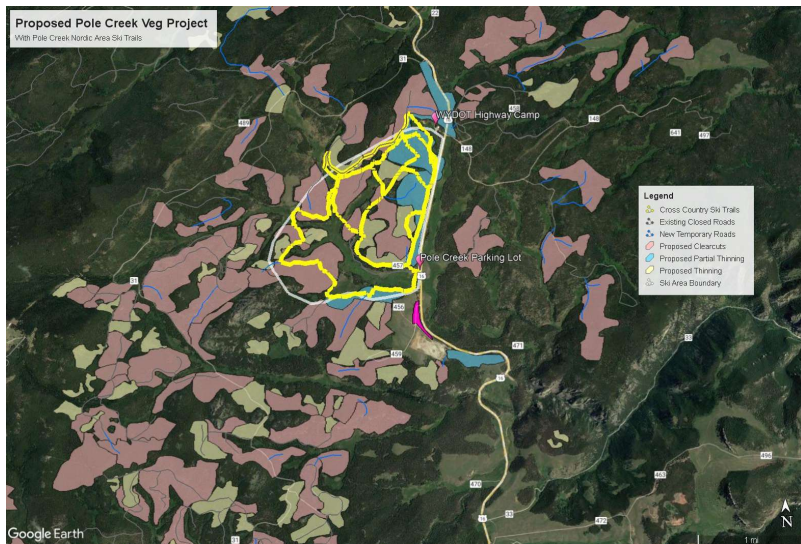
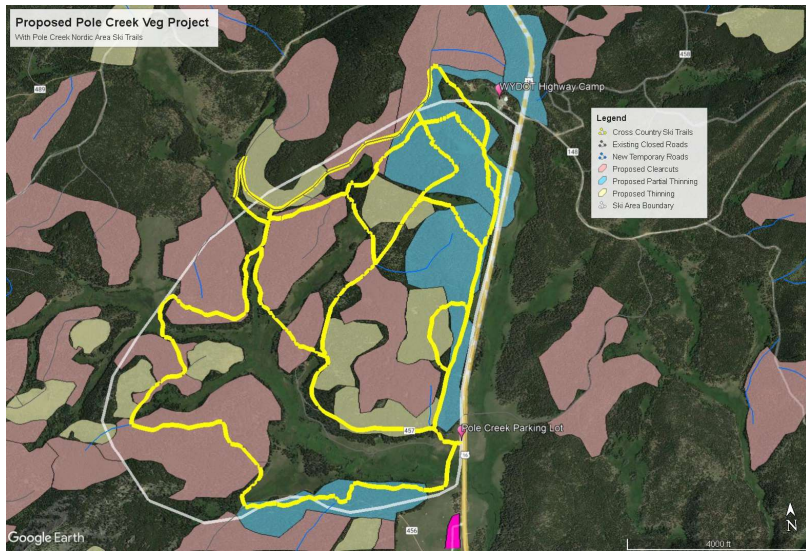


US Forest Service map of proposed project, Aspen Projects and Road Changes, with ski areas outlined in blue.



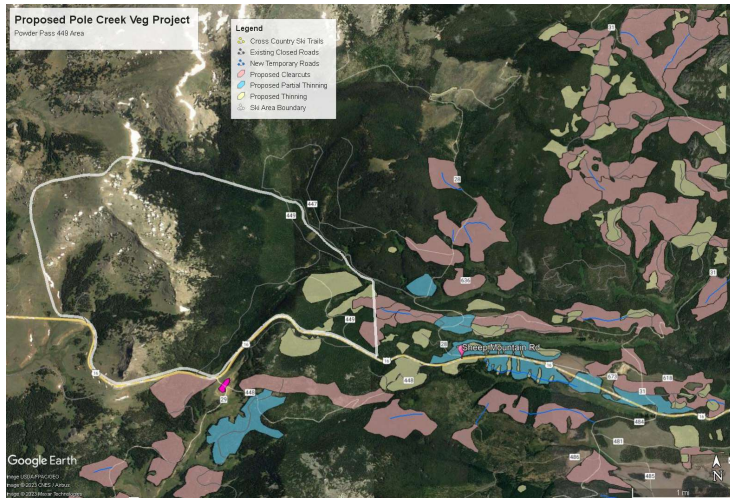
US Forest Service map of proposed project, Timber Harvests & WUI Areas, with ski areas outlined in blue.

Detail Maps of Bighorn National Forest's Proposed Timber Project at Pole Creek Nordic Area



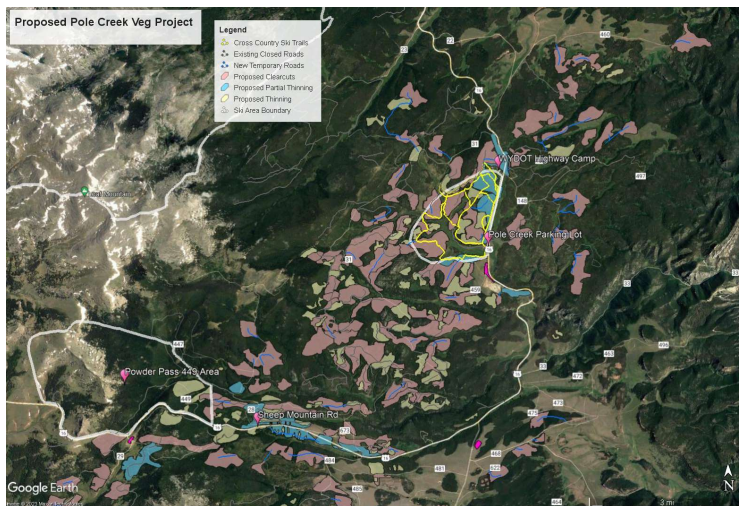
Yellow lines are maintained cross-country ski trails, and the white line is the ski area boundary. Light pink polygons are proposed clearcuts, yellow polygons are proposed pre-commercial thinning, blue are proposed partial thinning. Map does not show 1/8 mile tree removal for Wildland Urban Interface buffers around WYDOT Highway Camp, a Cow Camp Cabin, and the Pole Creek Rental Cabin, which would remove substantial additional tree cover.

Map of Powder Pass 449 Nordic Area with USFS Proposed Treatments



Powder Pass 449 non-motorized Nordic Ski Area (boundary shown as white line) with Forest Service Proposed timber treatments.

Large Scale Map of Ski Areas and USFS Proposed Treatments



Large scale view of USFS project showing ski areas. The entire Pole Creek Vegetation Management Project extends several miles to the south of this map. Pole Creek represents a small proportion of the project area as a whole.