

 An official website of the United States government [Here's how you know](#)



Forest Service
Caring For the Land and Serving People

MENU

Fire Danger TODAY



MODERATE

[InciWeb - Incident Information System](#)

[Kalispell Interagency Dispatch Center](#)

[Montana Fire Restrictions Information](#)

Alerts & Warnings

[Margaret Fire area, road, and trail closure](#)

[Cannon Fire Area and Trail Closure](#)

[Dean Creek Fire Area Closure](#)

[Weasel Fire Area, Road, and Trail Closure Order](#)

[Food/Wildlife Attractant Storage Special Order](#)

[View All Forest Alerts](#)

2017 Holland Lake Land Acquisition

The Partnership



Partnerships are a critical part of land acquisition projects for the U.S. Forest Service.

Partners and cooperators in this project include Missoula County, Montana Fish, Wildlife and Parks, Montana Department of Natural Resources, Montana Trout Unlimited, Swan Ecosystems Center, Northwest Connections, Montana Wilderness Association, Vital Ground, Backcountry Hunters and Anglers, The Trust for Public Land, The Nature Conservancy, the Rocky Mountain Elk

Foundation, and Montana Governor Steve Bullock.

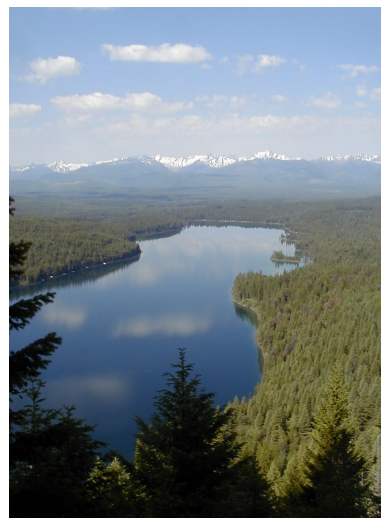
The Project

The Holland Lake Acquisition received 2017 funding from the Land and Water Conservation Fund (LWCF).

"This property lies within the popular Holland Lake recreational area of the scenic Swan Valley and there was some pressure to develop it," said Blake Henning, RMEF chief conservation officer. "We appreciate the landowners for recognizing the wildlife values of the land and reaching out to us to help conserve it."

Situated within the internationally recognized Crown of the Continent Ecosystem, and 64-miles north of Missoula, this 640-acre parcel in the Swan Valley will contribute to national efforts to provide multiple recreation opportunities to the public.

Additionally, acquisition of this parcel helps the Forest Service foster resilient, adaptive ecosystems, strengthen communities, and connect people with the outdoors. The parcel lies west of the Swan Mountains and Holland Lake Recreation Area, and east of the Mission Mountain Wilderness.



The Land

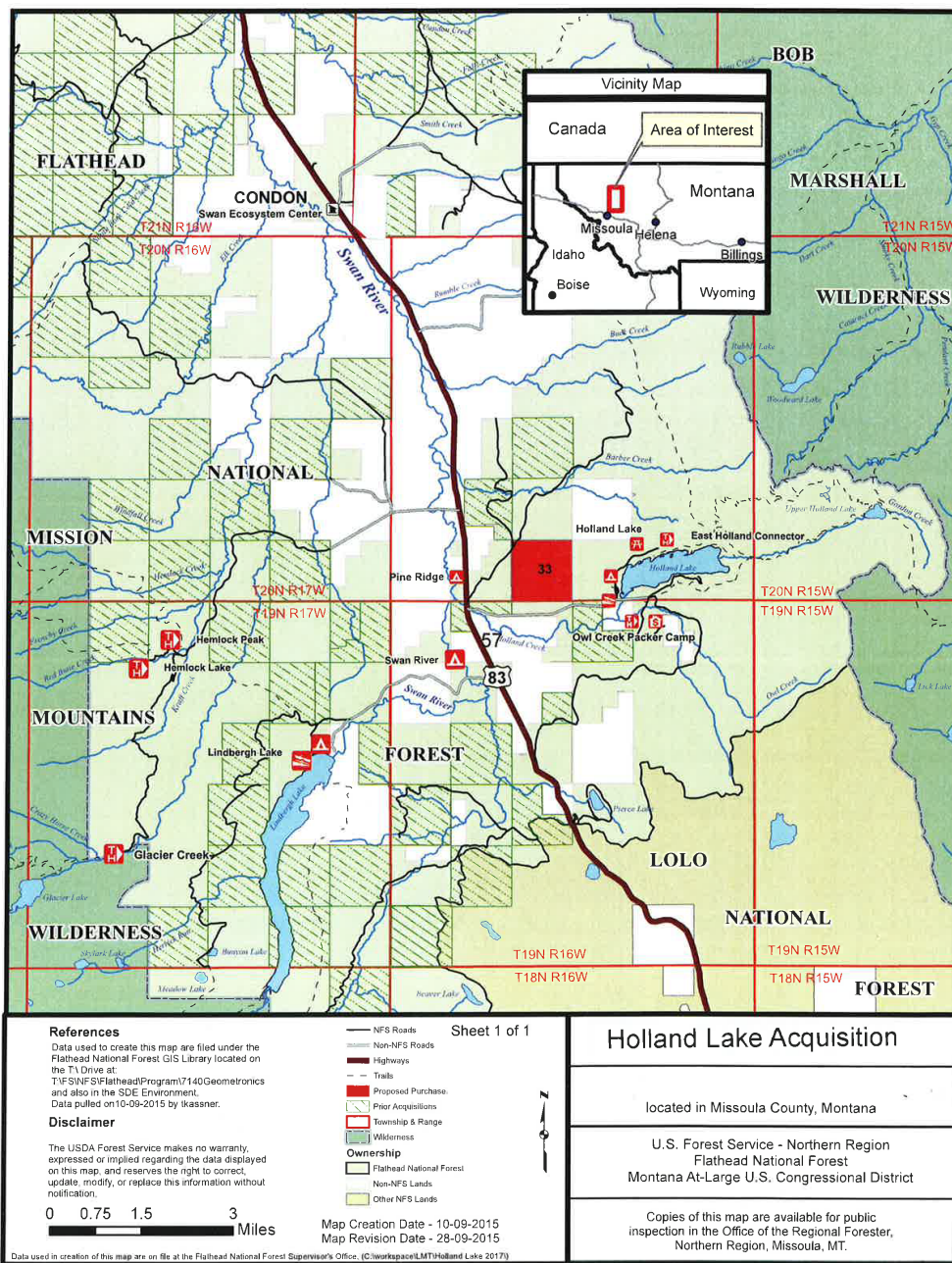
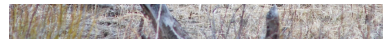


The acquisition of public land, previously threatened by development, in the Swan Valley contributes to the protection of prime wetland habitat as a result of its proximity to Holland Lake, the Swan River and its tributaries. This area provides connectivity from the Swan to the Mission Mountains and offers vital habitat for species protected by the Endangered Species Act. This area supports populations of federally threatened bull trout, grizzly bear, and Canada Lynx, as well as gray wolves, elk, moose, deer, mountain lions and wolverines.

The Crown of the Continent has been described as one of the premier mountain regions of the world and contains many of the largest remaining blocks of roadless lands in the contiguous US. This landscape is a remarkable assemblage of peaks, dense conifer forest, cold clear



rivers, and native grasslands. The full suite of native forest carnivores are found within this ecosystem, including wolf, wolverine, pine marten, fisher, bobcat, Canada lynx, mountain lion, black and grizzly bear. On a larger scale, this Crown of the Continent area links the Canadian Rockies with the Greater Yellowstone Ecosystem, Selway-Bitterroot Wilderness, and proposed Great Burn Wilderness. Acquisition of this parcel will prevent residential development and fractionation of this critical area.



[Return to top](#)

[Recreation.gov](#)

[askUSDA](#)

[Report Fraud on USDA
Contracts](#)

[Accessibility Statement](#)

[WhiteHouse.gov](#)

[Policies and Links](#)

[Visit OIG](#)

[Privacy Policy](#)

[eGov](#)

[Our Performance](#)

[Plain Writing](#)

[Non-Discrimination
Statement](#)

[Anti-Harassment Policy](#)

[No FEAR Act Data](#)

[Open Government](#)

[Careers](#)

[FOIA](#)

[Information Quality](#)

[USA.gov](#)

Flathead National Forest

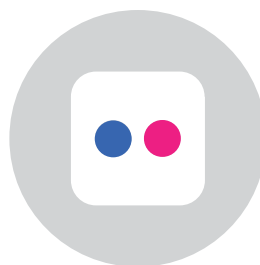
Supervisor's Office

650 Wolfpack Way

Kalispell, MT 59901

(406) 758-5208

Visit or Call our Ranger District Offices



Contact Us



Forest Service
U.S. Department of Agriculture