



Montana Fish, Wildlife & Parks

Targeted Elk Brucellosis Surveillance Project March 2016 Update

Elk capture and sampling efforts for the Targeted Elk Brucellosis Surveillance project occurred January 17th through February 23rd, 2016. Elk from 4 populations along the eastern portion of the Absaroka Mountain range between Big Timber and Red Lodge were screened for exposure to brucellosis. Additionally, elk captured in previous years of this project were recaptured for continued monitoring and/or collar removal (Figure 1).

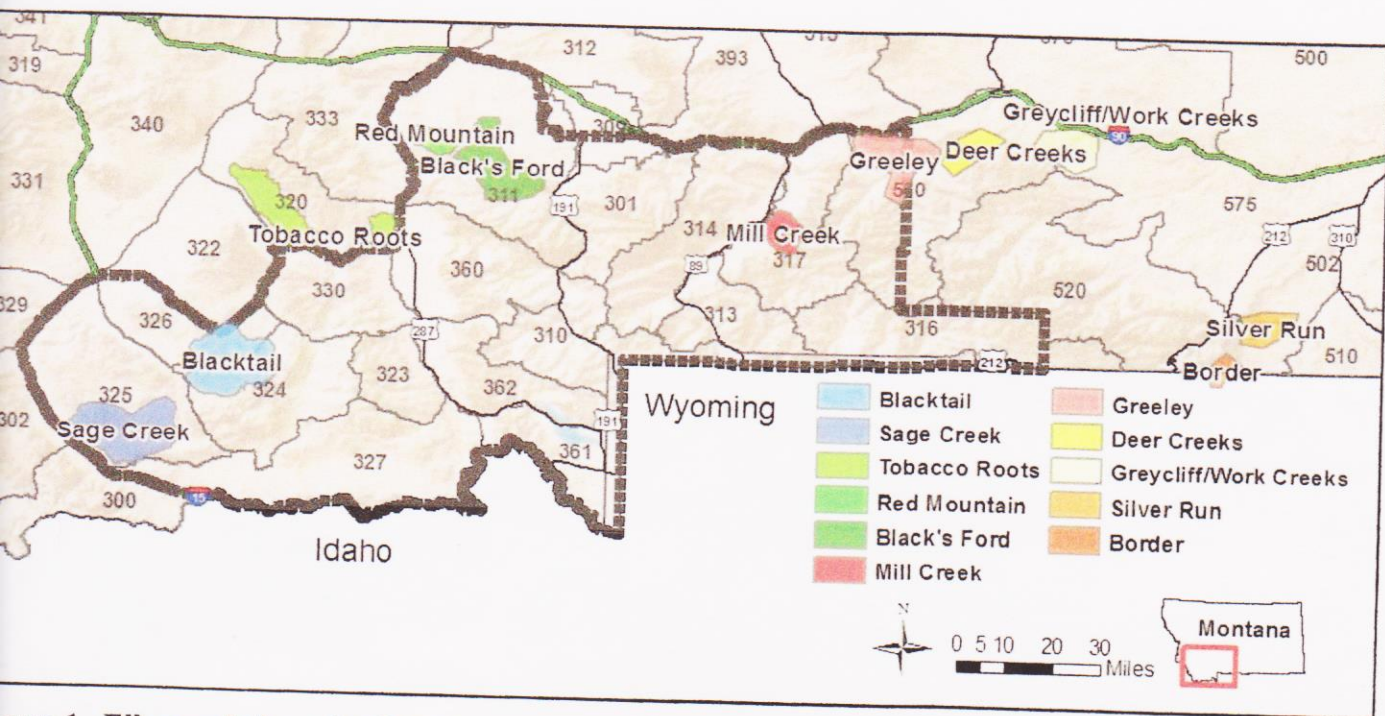


Figure 1. Elk populations that have been screened for exposure to brucellosis as part of the Targeted Elk Brucellosis Surveillance Project during 2011 - 2016.