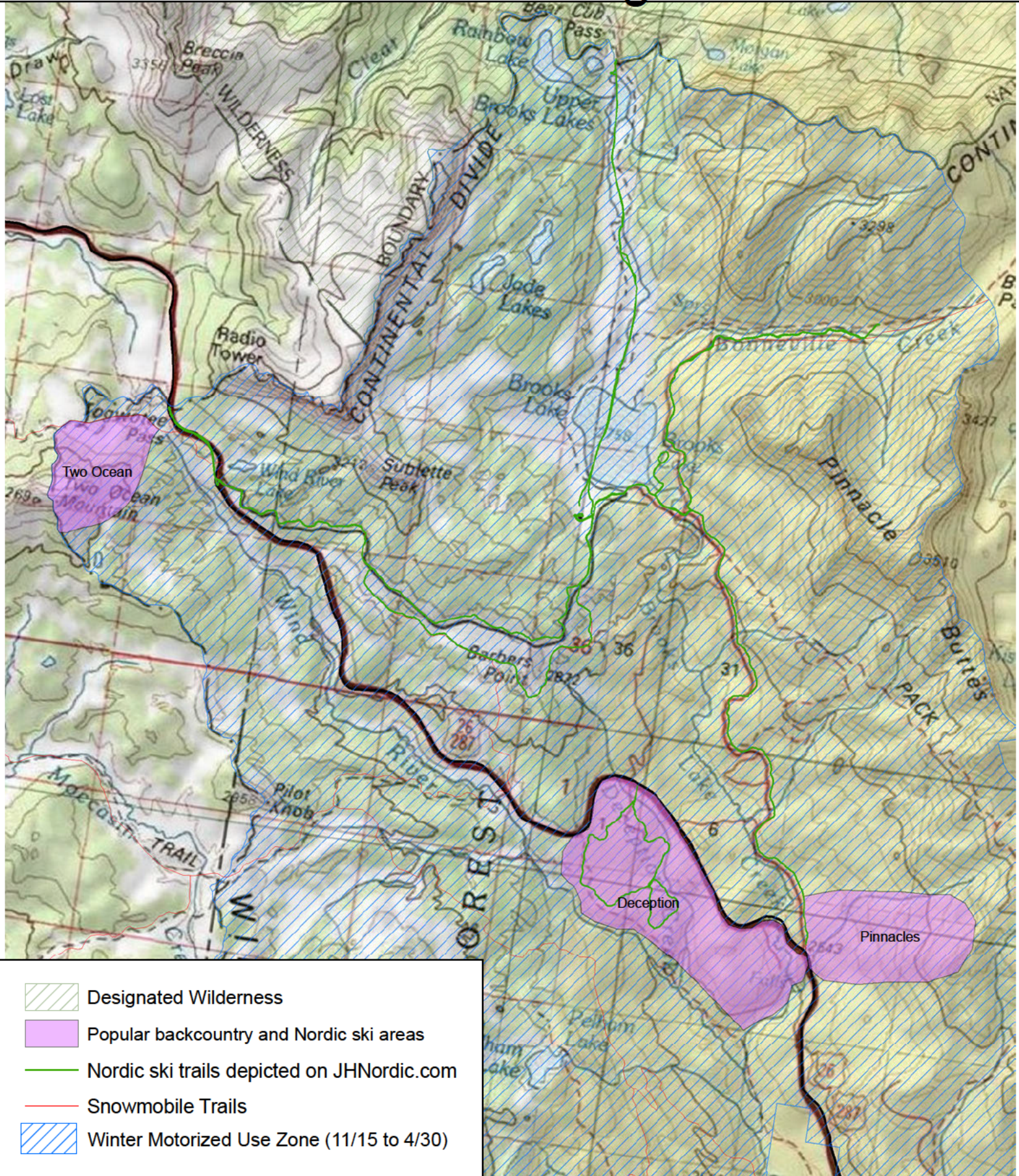
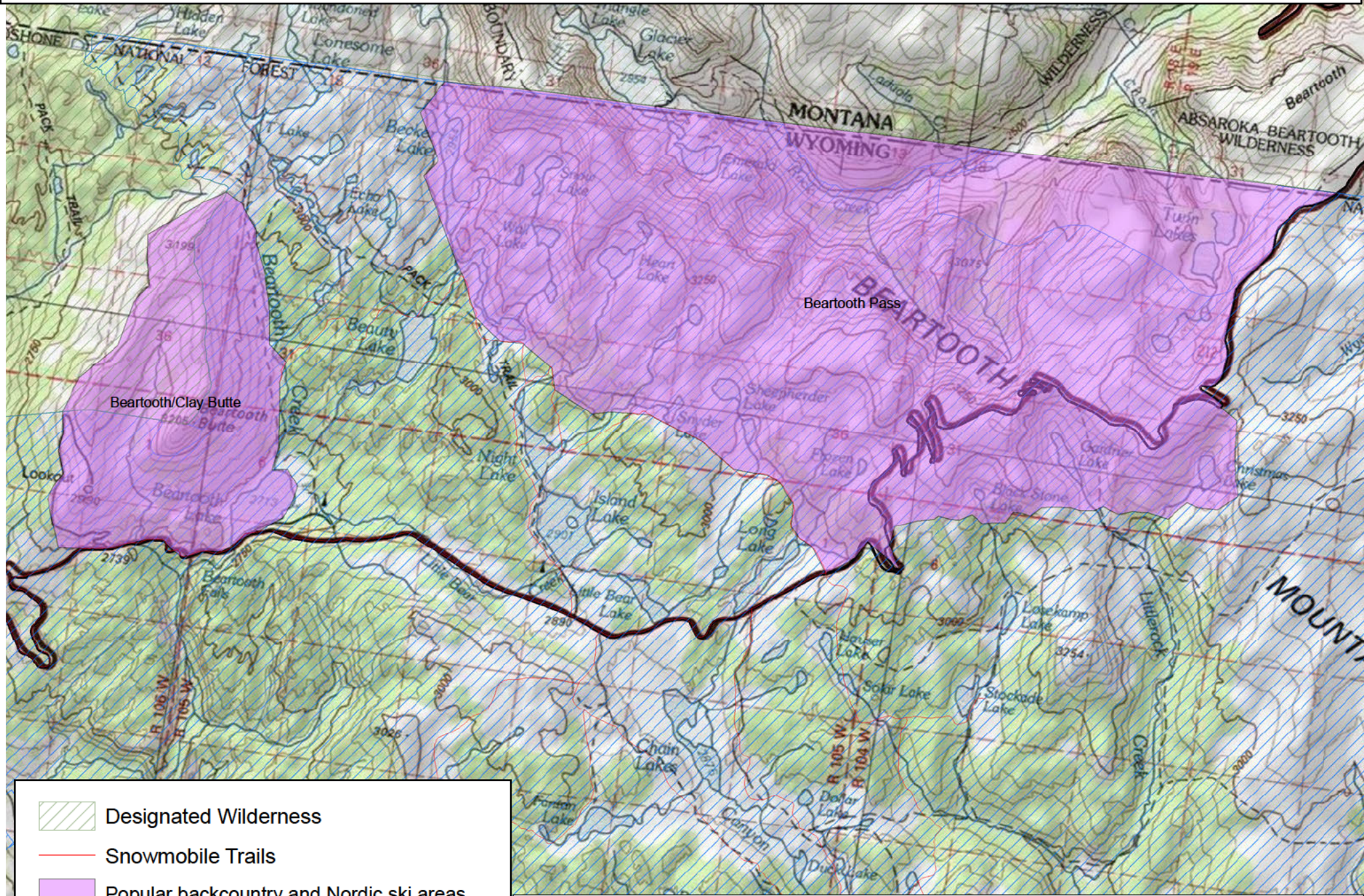






Winter Recreation on Togwotee Pass



Non-motorized area	Season Used	Management
Two Ocean	Winter/Spring	Increase education efforts and signage to reduce conflict between recreational uses
Deception	Winter	Close area to motorized use with exception of grooming equipment
Pinnacles	Winter	Close area to motorized use with exception of grooming equipment

Winter Recreation on the Beartooth Pass (Wyoming)



-  Designated Wilderness
-  Snowmobile Trails
-  Popular backcountry and Nordic ski areas
-  Winter Motorized Use Zone (11/15 to 4/30)

Non-motorized area	Season Used	Management
Beartooth Pass	Spring/Summer	End OSV season April 30 to temporally separate uses
Beartooth/Clay Butte	Spring/some winter use	End OSV season April 30 to temporally separate uses