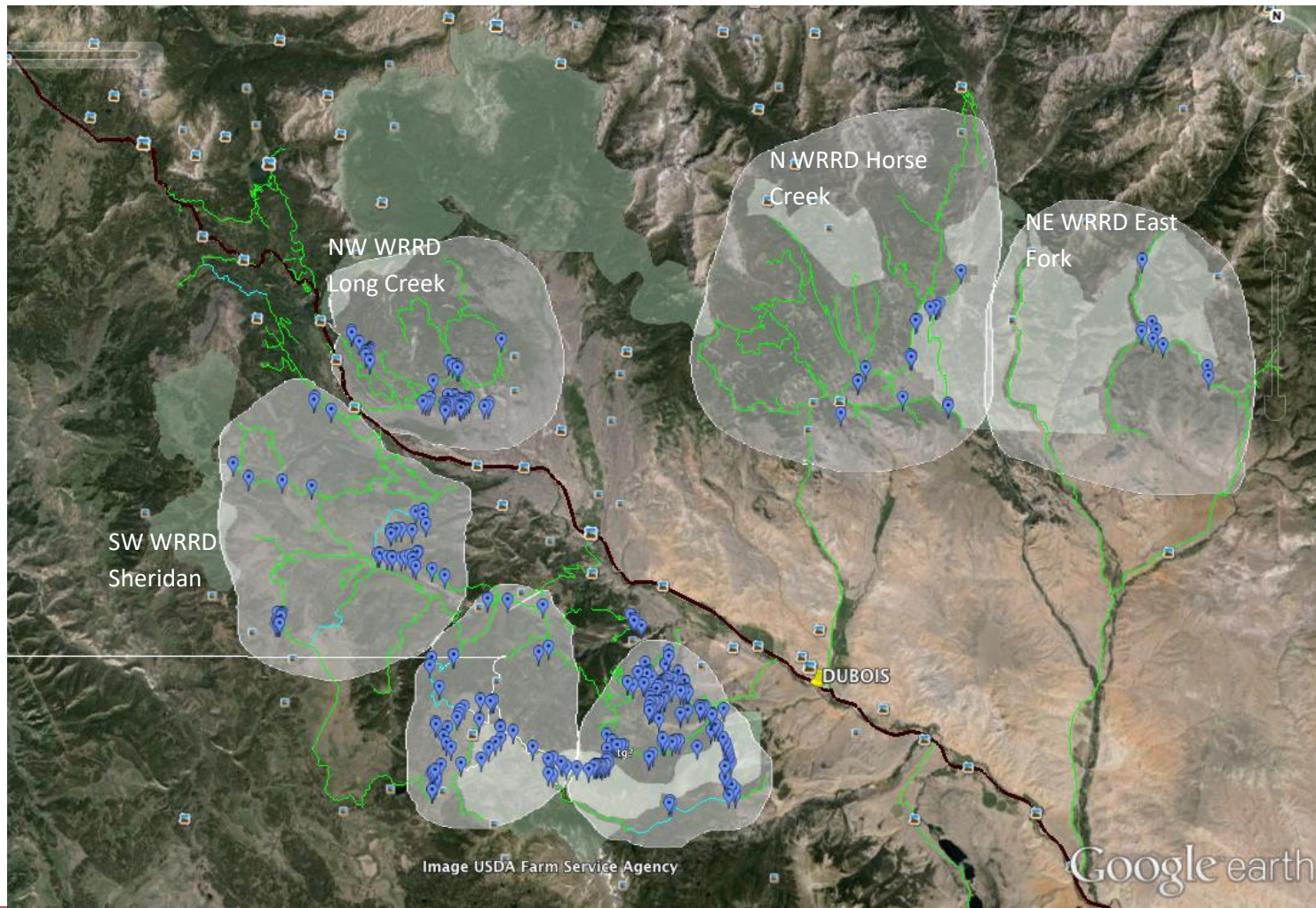


Attachment 2

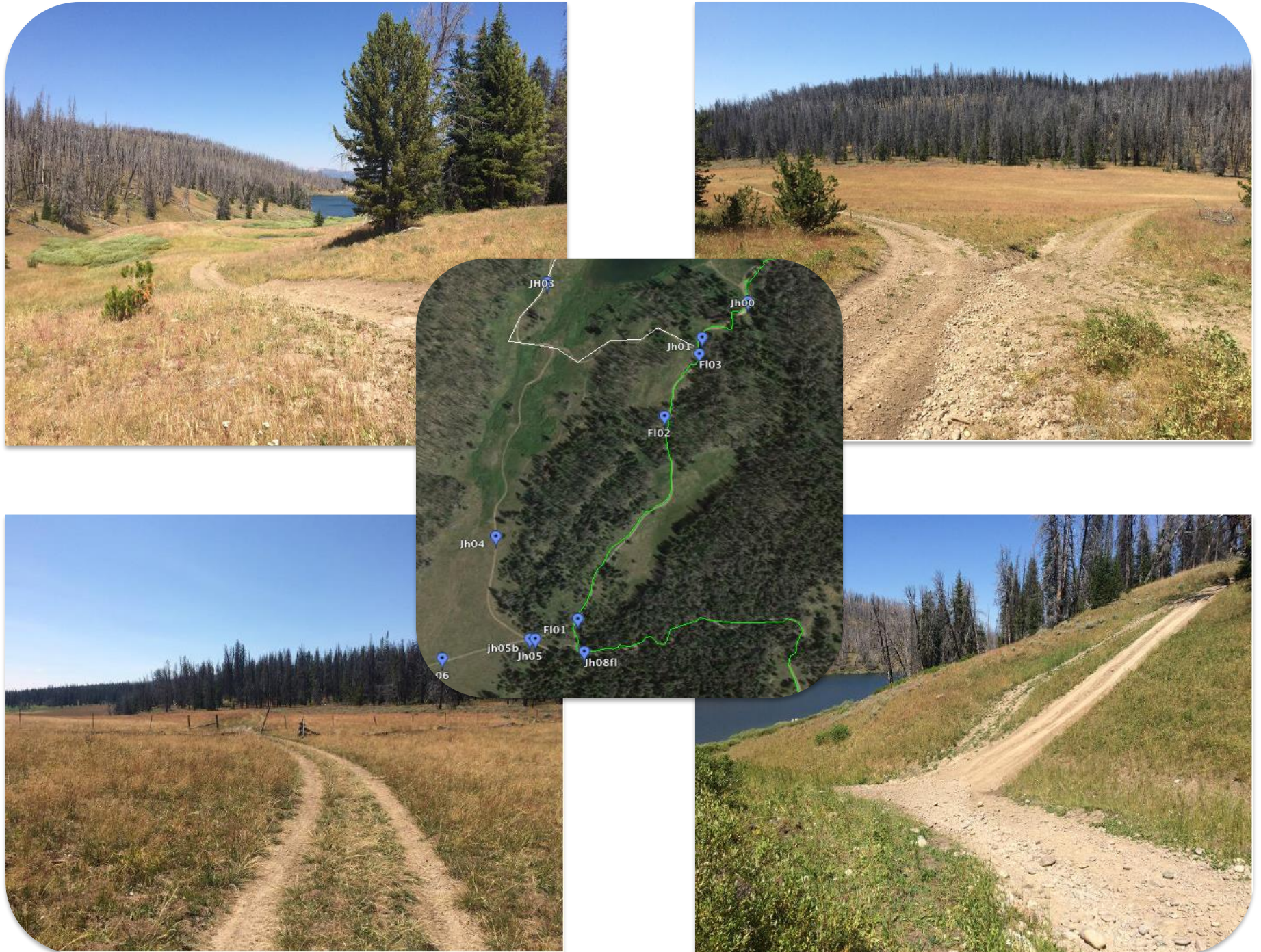
Examples of Infrastructure Priorities on the Wind River Ranger District



Green Lines indicate legal MVUM motorized
Blue Lines represent legal motorized trail (<50inch vehicles)

Blue Markers for Waypoint of motorized use observation
Shaded Green Areas show Inventoried Roadless Area layer

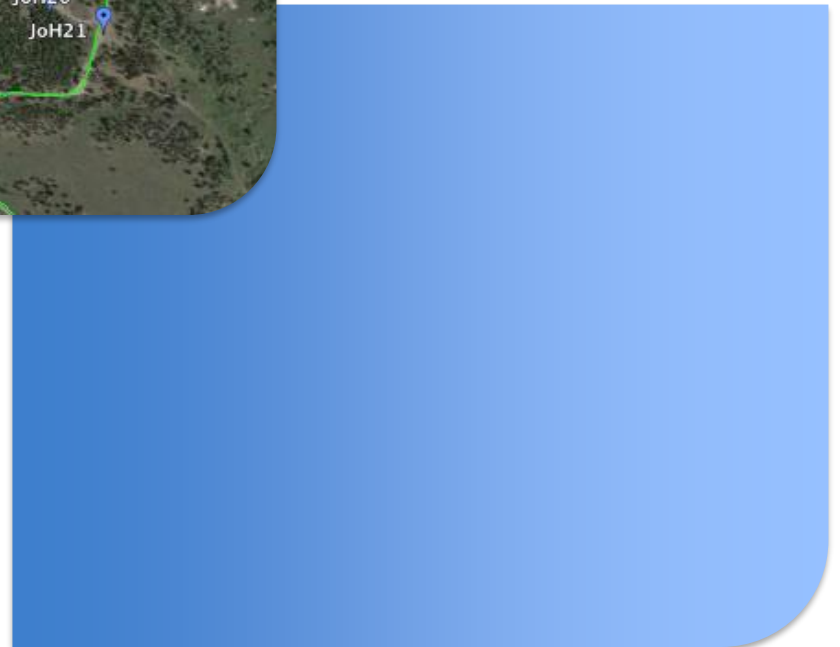
A.1. Sheridan, Fish Lake (SW WRRD). Multiple unauthorized routes with no closure notices. Dispersed camping concerns? Motorized use on well-established CRNC connects to Bridger Teton National Forest.



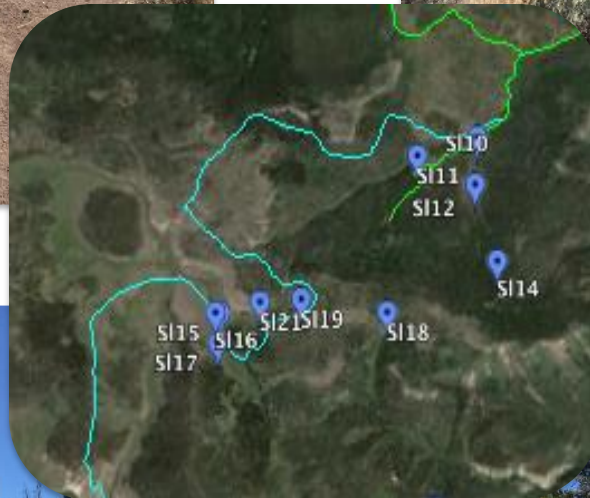
A2. Long Ck (NW WRRD). Multiple unauthorized routes not signed closed, system road not signed open.



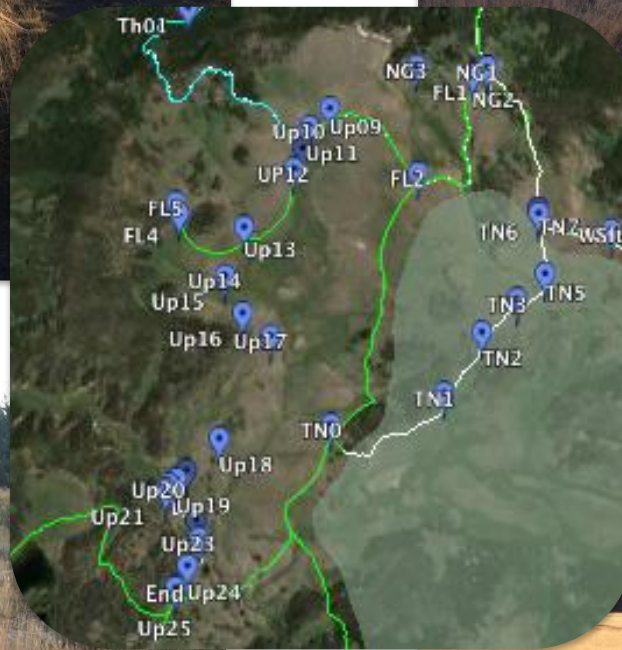
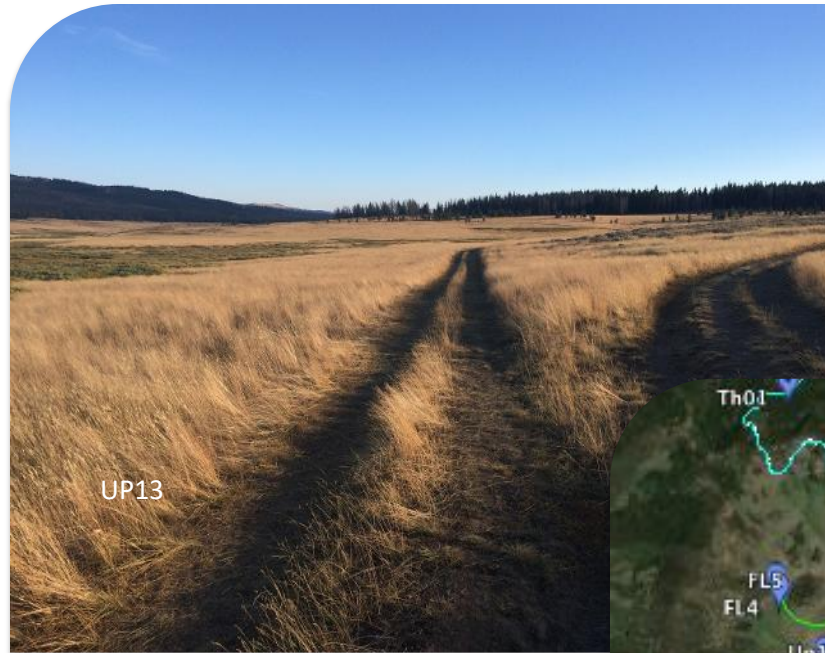
A3. Long Ck (NW WRRD). Well-established unauthorized road not signed closed, system road not signed open. CRNC leads to two significant unauthorized routes.



A4. Sheridan (SW WRRD). CRNC from ATV trail.



A5. Union Pass, 2632b (S WRRD). System road needs termination and CRNCs need closure infrastructure. Motorized use on well-established road connects to Bridger Teton National Forest.



A6. WildCat (SE WRRD). SR554.1e needs termination infrastructure. SR600 road leads to more UARs in roadless area.



Wpt JT08 (end of
554.1e)



Wpt TG11



Wpt TG17



Wpt TG06

A7. Wild Cat (SE WRRD).



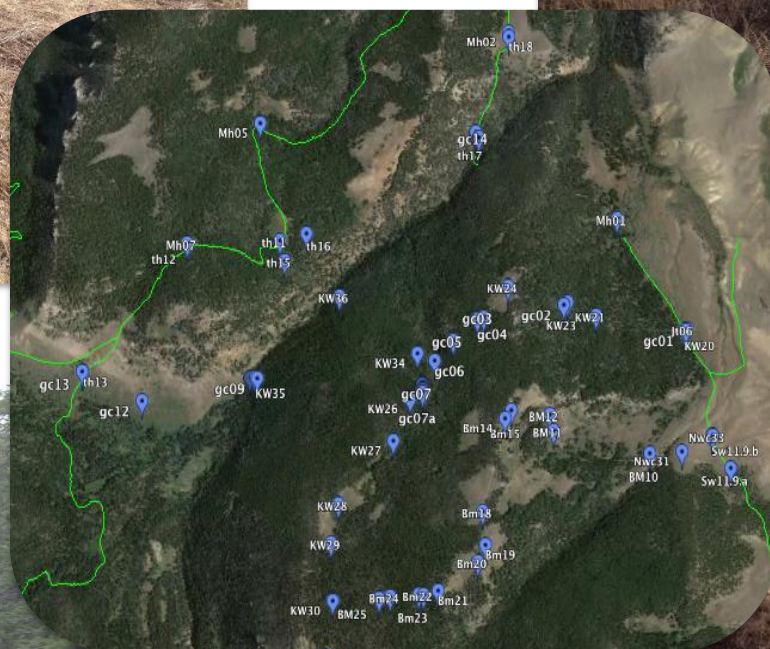
A8. Wild Cat, Bald Mtn (SE WRRD,). Three UARs leading to Bald Mtn, no closure infrastructure in place.



A9 Wild Cat, Geyser Creek (SE WRRD). Multiple miles of UARs from SR 554 and SR545, including user-created routes connecting to Bald Mtn. UAR.



WptGC01



WptGC03

