

EXHIBIT 38

MAY 31, 2019 @ 5:44 P.M. VIEW DOWNSTREAM AT ONE OF A KIND LOG JAM LOCATED AT 35.033897, -83.128544. NOTE THE SEDIMENT IMPOUNDED ON THE STREAM BED.



MAY 31 2019 @ 5:52 P.M. PHOTO OFFERS AN UPSTREAM VIEW OF THE DEPTH OF THE BLANKET OF SEDIMENT TAKEN FROM RIVER RIGHT STANDING IN FRONT OF THE MASSIVE LOG JAM LOCATED AT 35.033897, -83.128544.



MAY 31 2019 @ 5:54 P.M. PHOTO OFFERS AN UPSTREAM VIEW OF THE DEPTH OF THE BLANKET OF SEDIMENT TAKEN WHILE STANDING IN FRONT OF THE MASSIVE LOG JAM LOCATED AT 35.033897, -83.128544.



MAY 31 2019 @ 5:55 P.M. PHOTO OFFERS AN UPSTREAM VIEW OF THE DEPTH OF THE BLANKET OF SEDIMENT TAKEN STANDING IN FRONT OF THE MASSIVE LOG JAM LOCATED AT 35.033897, -83.128544.



WADING STAFF STUCK IN
SEDIMENT

MAY 31, 2019 @ 5:55 P.M. PHOTO EVIDENCES THE DEPTH OF THE BLANKET OF SEDIMENT THAT HAS ACCUMULATED IMMEDIATELY UPSTREAM OF THE MASSIVE LOG JAM LOCATED AT 35.033897, -83.128544



MAY 31, 2019 @ 5:55 P.M. PHOTO EVIDENCES THE DEPTH OF THE BLANKET OF SEDIMENT THAT HAS ACCUMULATED IMMEDIATELY UPSTREAM OF THE MASSIVE LOG JAM LOCATED AT 35.033897, -83.128544



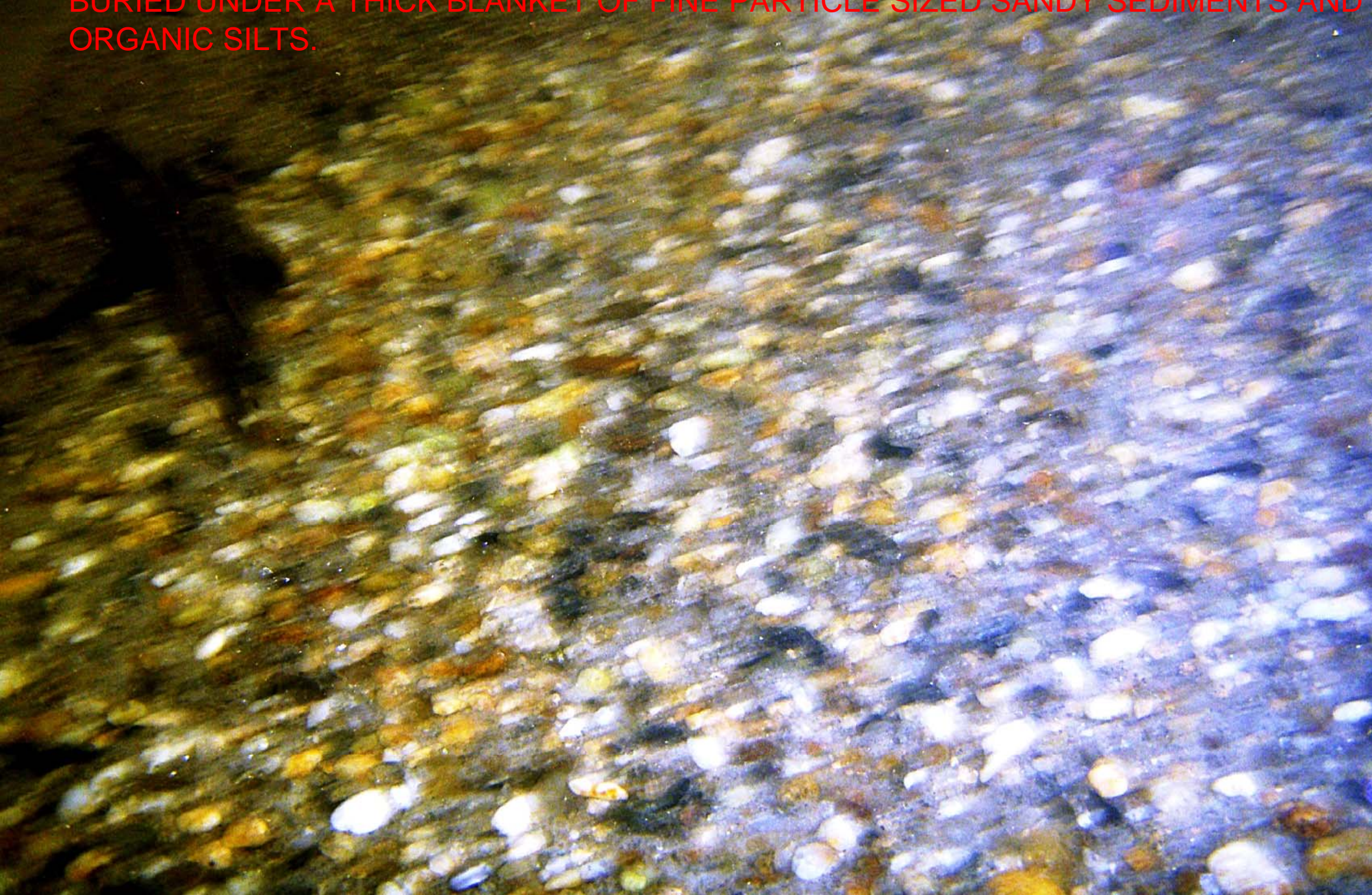
MAY 31, 2019 @ 5:55 P.M. PHOTO EVIDENCES THE FINE PARTICLE SIZED SANDY SEDIMENTS WHICH HAVE ACCUMULATED ON THE STREAM BED IMMEDIATELY UPSTREAM OF THE MASSIVE LOG JAM LOCATED AT 35.033897, -83.128544



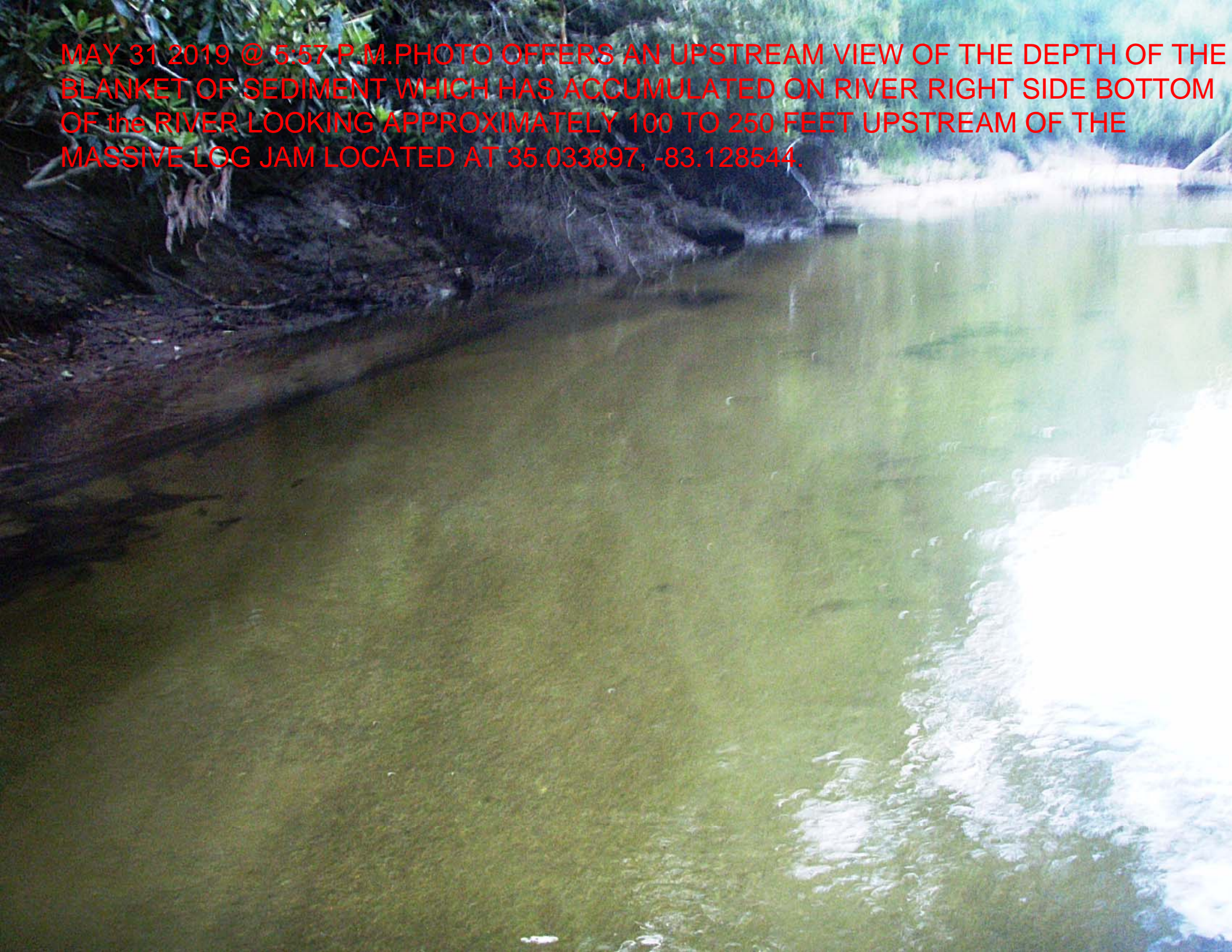
MAY 31, 2019 @ 5:56 P.M. PHOTO EVIDENCES THE FINE PARTICLE SIZED SANDY SEDIMENTS WHICH HAVE ACCUMULATED ON THE STREAM BED IMMEDIATELY UPSTREAM OF THE MASSIVE LOG JAM LOCATED AT 35.033897, -83.128544



MAY 31, 2019 @ 5:56 P.M. UNDERWATER PHOTO DEMONSTRATES HOW QUARTZ GRAVELS WHICH ARE SUITABLE FOR TROUT SPAWNING ARE PRESENT UPSTREAM OF THE MASSIVE LOG JAM LOCATED AT 35.033897, -83.128544 BUT HAVE BECOME BURIED UNDER A THICK BLANKET OF FINE PARTICLE SIZED SANDY SEDIMENTS AND ORGANIC SILTS.



MAY 31 2019 @ 5:57 P.M. PHOTO OFFERS AN UPSTREAM VIEW OF THE DEPTH OF THE BLANKET OF SEDIMENT WHICH HAS ACCUMULATED ON RIVER RIGHT SIDE BOTTOM OF THE RIVER LOOKING APPROXIMATELY 100 TO 250 FEET UPSTREAM OF THE MASSIVE LOG JAM LOCATED AT 35.033897, -83.128544.





SAND BANK ON RIVER LEFT

UPSTREAM

MAY 31 2019 @ 5:57 P.M. PHOTO OFFERS AN UPSTREAM VIEW OF THE DEPTH OF THE BLANKET OF SEDIMENT WHICH HAS ACCUMULATED ON RIVER CENTER PART OF THE BOTTOM OF THE RIVER LOOKING APPROXIMATELY 100 TO 250 FEET UPSTREAM OF THE MASSIVE LOG JAM LOCATED AT 35.033897, -83.128544.



MASSIVE SAND BANK ON RIVER LEFT

MAY 31 2019 @ 5:57 P.M. PHOTO OFFERS AN UPSTREAM VIEW OF THE DEPTH OF THE BLANKET OF SEDIMENT WHICH HAS ACCUMULATED ON RIVER LEFT PART OF THE BOTTOM OF THE RIVER LOOKING APPROXIMATELY 100 TO 250 FEET UPSTREAM OF THE MASSIVE LOG JAM LOCATED AT 35.033897, -83.128544.

MAY 31 2019 @ 5:58 P.M. PHOTO SHOWS WADING STAFF STUCK IN STREAM BOTTOM
SEDIMENT WHICH HAS ACCUMULATED ON RIVER LEFT APPROXIMATELY 100 TO 250
FEET UPSTREAM OF THE MASSIVE LOG JAM LOCATED AT 35.033897, -83.128544



MAY 31 2019 @ 5:58 P.M. PHOTO REVEALS THE DEPTH OF THE BLANKET OF SEDIMENT WHICH HAS ACCUMULATED ON RIVER LEFT APPROXIMATELY 100 TO 250 FEET UPSTREAM OF THE MASSIVE LOG JAM LOCATED AT 35.033897, -83.128544



MAY 31 2019 @ 5:59 P.M. VIEW IS DOWNSTREAM LOOKING AT SAND BANK ON RIVER LEFT SITUATED APPROXIMATELY 225 FEET UPSTREAM OF THE MASSIVE LOG JAM LOCATED AT 35.033897, -83.128544



MAY 31, 2019 @ 6:00 P.M. PHOTO DEMONSTRATES HOW QUARTZ GRAVELS WHICH ARE SUITABLE FOR TROUT SPAWNING ARE PRESENT 225 FEET UPSTREAM OF THE MASSIVE LOG JAM LOCATED AT 35.033897, -83.128544 BUT HAVE BECOME BURIED UNDER A THICK BLANKET OF FINE PARTICLE SIZED SANDY SEDIMENTS AND ORGANIC SILTS.



MAY 31, 2019 @ 6:00 P.M. UNDERWATER PHOTO DEMONSTRATES HOW QUARTZ GRAVELS WHICH ARE SUITABLE FOR TROUT SPAWNING ARE PRESENT ON THE NORTH CAROLINA HEADWATERS OF THE CHATTOOGA RIVER BUT HAVE BEEN BURIED IN TOO MANY LOCATIONS BY A BLANKET OF SEDIMENT WHICH EXCEEDS MORE THAN A FOOT IN DEPTH

