



KENTUCKY HEARTWOOD

Protecting the Beauty and Wellbeing of Kentucky's Native Forests

Paul Miller, Director
Kentucky Division of Water
300 Sower Boulevard
3rd Floor
Frankfort, KY 40601

RE: Ongoing landslides and sedimentation from logging in Daniel Boone National Forest

March 14, 2021

Dear Director Miller,

The following complaint is being submitted to the Kentucky Division of Water on behalf of Kentucky Heartwood. Over the past 16 months we have documented multiple, ongoing landslides which have occurred in logging units in the Redbird District of the Daniel Boone National Forest in Clay and Leslie Counties. Despite our providing detailed information about these landslides to the Daniel Boone National Forest on multiple occasions, the Forest Service has repeatedly downplayed the impacts as temporary and minimal. During this time the Forest Service has failed to implement any attempts at stabilization and remediation. Impacts to Kentucky waterways are current and ongoing.

Kentucky Heartwood notified the Daniel Boone National Forest of landslides and slope stability issues at the sites referenced in this complaint (along with other sites) beginning in late 2019. Since that time, previously documented landslides have grown substantially while more have occurred - most recently after the severe rain events earlier this month. We have documented multiple occurrences of sediment and debris reaching waterways and burying roads. Ulysses Creek Road was buried in large amounts of sediment in March 2020, and then buried again in March 2021. Each time large amounts of mud, cobble, and other debris entered the stream.

The logging units illustrated in this complaint were harvested as part of the Group One project, which was approved by the Daniel Boone National Forest in 2008. Unit 20, on Ulysses Creek, was logged in 2012. Unit 18, on Lower Jacks Branch, was logged in 2018. We think it likely that other landslides, mass wasting, and erosion are present at other logging sites in the Redbird District and believe that further investigation is warranted.

Attached to this letter is a document providing detailed site maps along with aerial and ground images of the referenced sites. We include comparisons of specific locations at different times

over the last 16 months to demonstrate that these sites are unstable, and that mass wasting and sedimentation are ongoing concerns.

We ask that the Kentucky Division of Water investigate these sites and compel the Daniel Boone National Forest to take responsibility for the impacts to Kentucky waterways resulting from their management of these sites.

I would be more than happy to provide additional information if needed. I can be reached at jim@kyheartwood.org or by calling [REDACTED]

Sincerely,

A handwritten signature in black ink that reads "Jim Scheff". The signature is written in a cursive, slightly slanted style.

Jim Scheff, Staff Ecologist
Kentucky Heartwood
P.O. Box 1482
Berea, KY 40403

Observed Landslides in Logging Sites Group One Project Redbird Ranger District Daniel Boone National Forest



Produced by Jim Scheff for Kentucky Heartwood

March 14, 2021

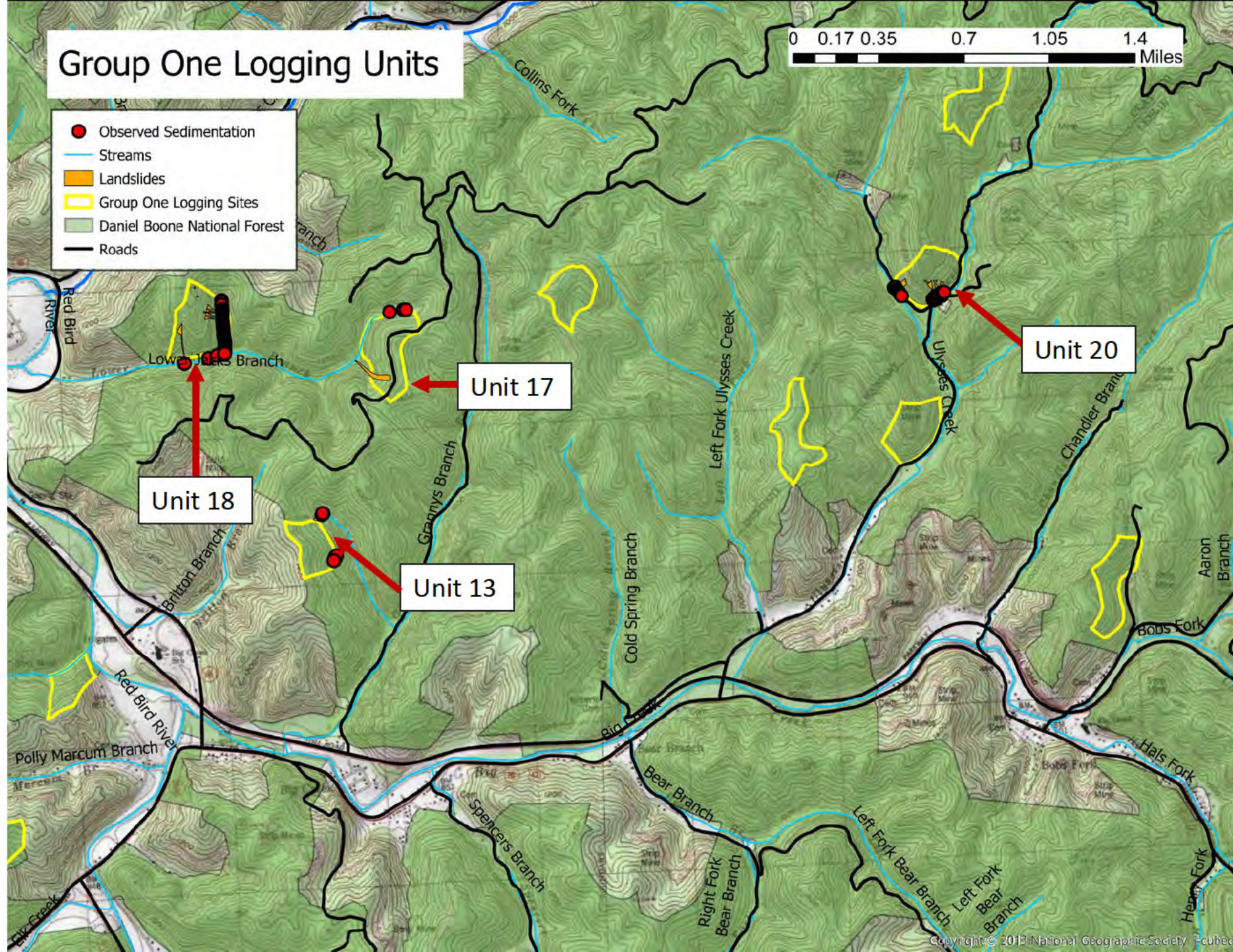
(Amended March 23, 2021)

Site observations recorded November 2019 through March 2021

Group One Logging Units

- Observed Sedimentation
- Streams
- Landslides
- Group One Logging Sites
- Daniel Boone National Forest
- Roads

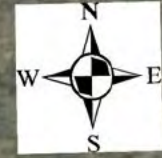
0 0.17 0.35 0.7 1.05 1.4 Miles






Lower Jack's Branch
Group One Redbird Project
Shelterwood Unit 18
Harvested 2018

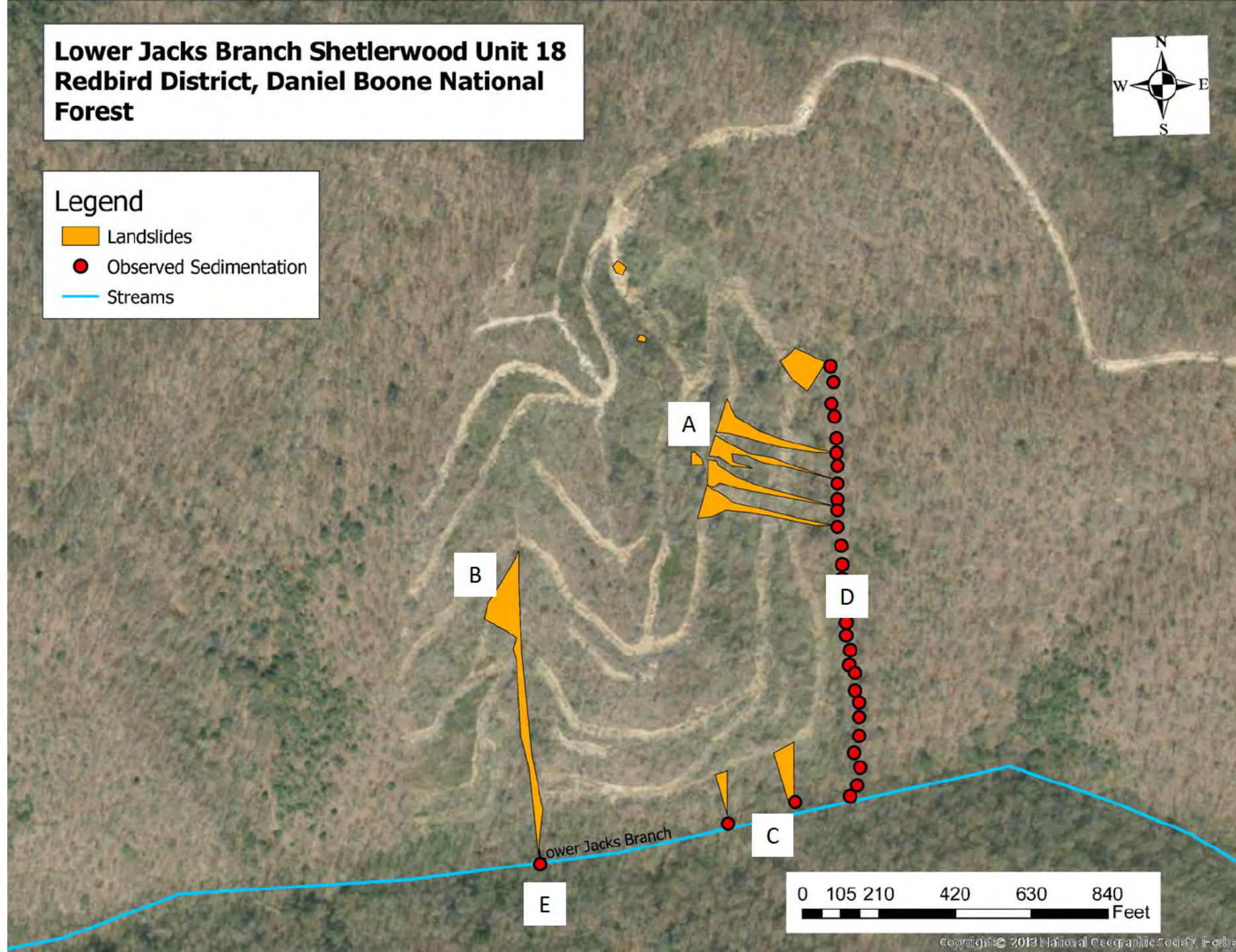
Lower Jack's Branch landslides first reported to Daniel Boone National Forest in December 2019

**Lower Jacks Branch Shetlerwood Unit 18
Redbird District, Daniel Boone National
Forest**






Legend

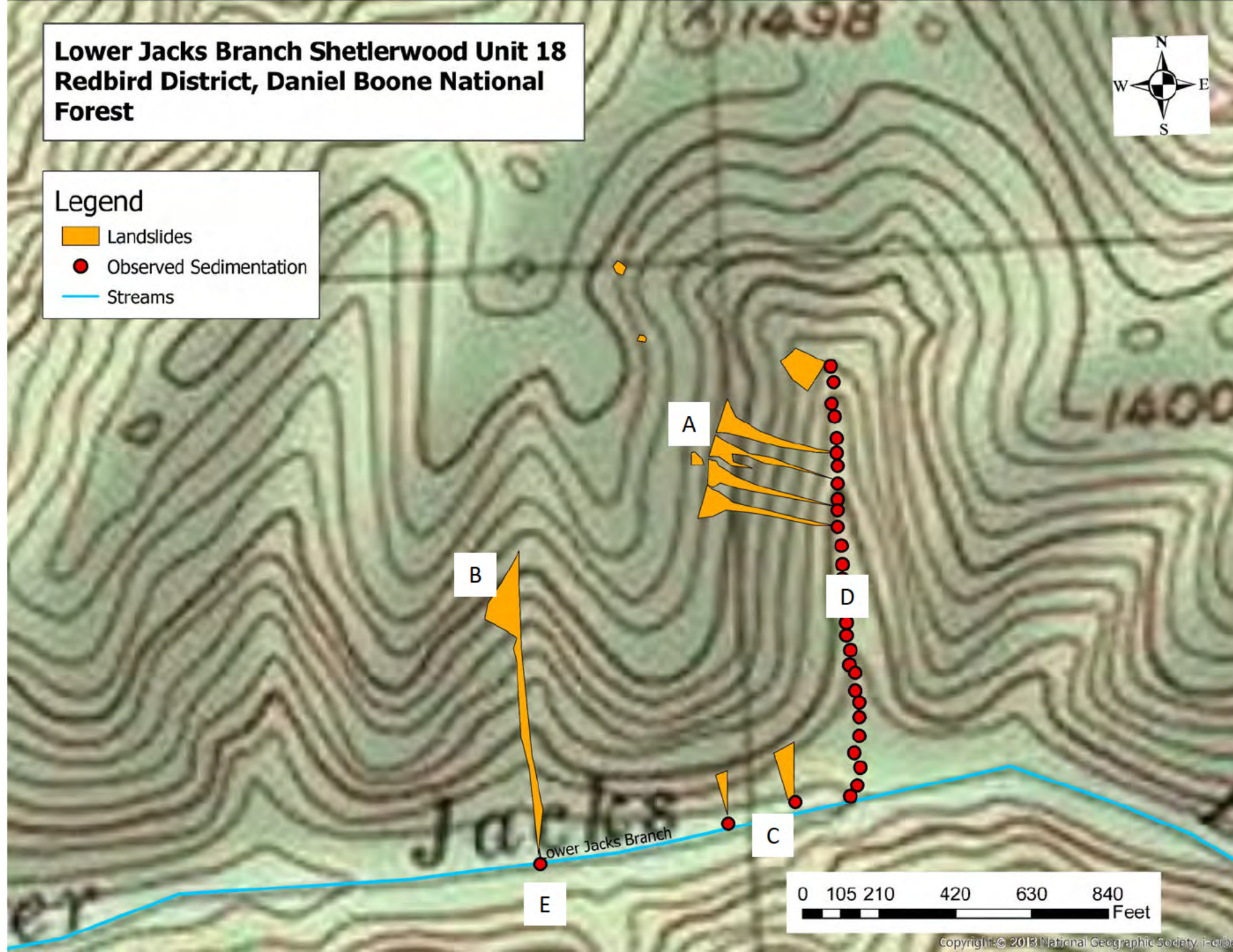
-  Landslides
-  Observed Sedimentation
-  Streams



**Lower Jacks Branch Shetlerwood Unit 18
Redbird District, Daniel Boone National
Forest**

Legend

-  Landslides
-  Observed Sedimentation
-  Streams



Lower Jacks Branch March 2021

A



Lower Jacks Branch March 2021

A



Lower Jacks Branch February 2020



Lower Jacks Branch February 2020

A



Lower Jacks Branch March 2021

B

An aerial photograph of a dry, eroded landscape. A light-colored, sandy path or gully runs diagonally from the upper left towards the bottom center. To the right of this path, a small, dark, narrow stream flows downwards. The surrounding terrain is covered with sparse, dry, brown vegetation and numerous bare, thin tree trunks. The overall color palette is dominated by browns and tans, indicating a dry, possibly winter or late autumn environment.

Lower Jacks Branch February 2020



Lower Jacks Branch February 2020



Lower Jacks Branch March 2021

B



Lower Jacks Branch March 2021

c



Lower Jacks Branch March 2021

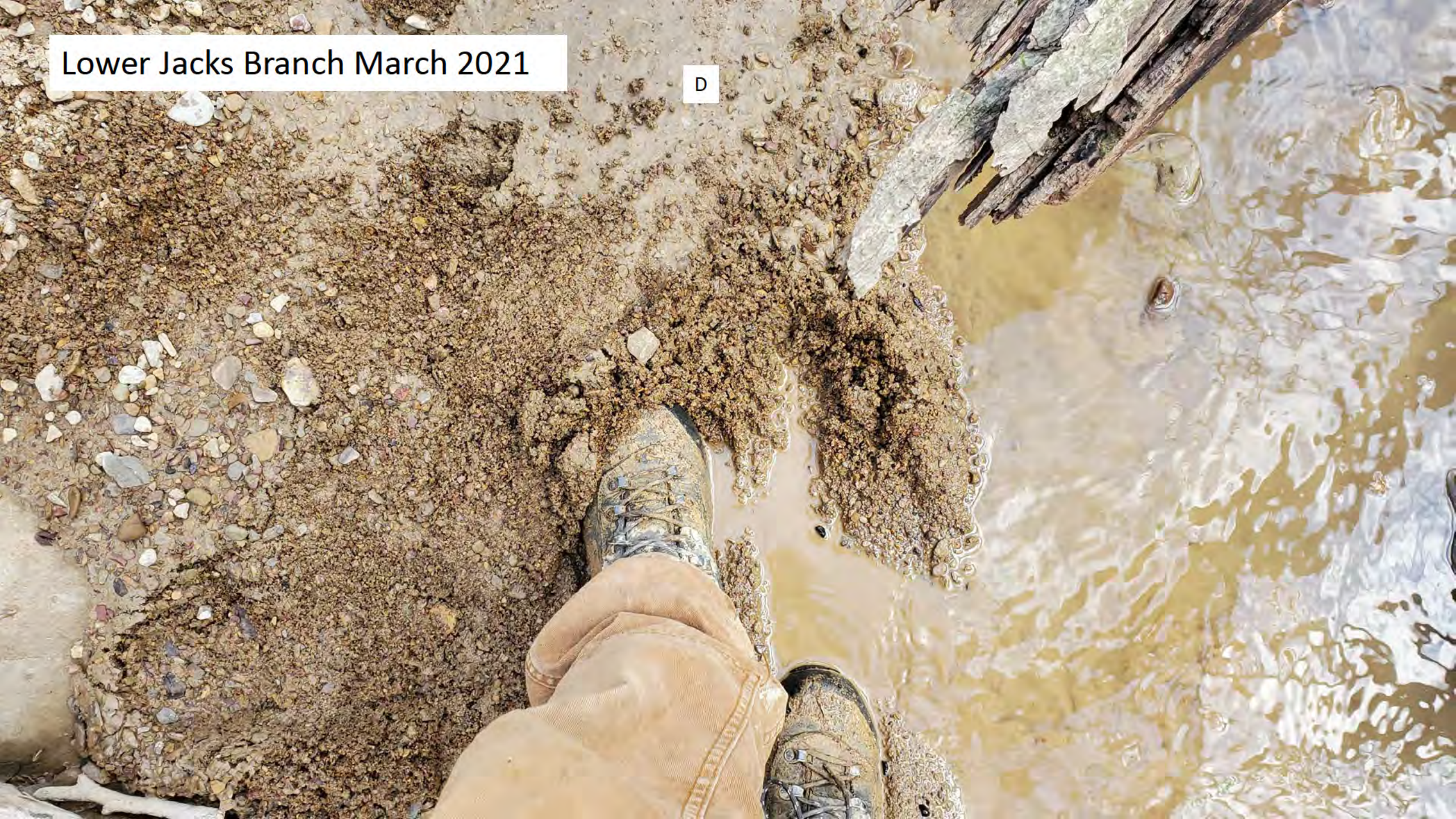


Lower Jacks Branch March 2021



Lower Jacks Branch March 2021

D



Lower Jacks Branch March 2021



D

Lower Jacks Branch March 2021

E

A photograph of a stream bed in a forest. The stream bed is composed of numerous light-colored, flat, and rounded rocks of various sizes. A large tree trunk, covered in moss, stands on the right side of the frame, with its roots extending over the stream bed. The water in the stream is shallow and clear, revealing the rocks beneath. The surrounding forest floor is covered with dry, brown leaves and some green ferns. The overall scene is a natural, undisturbed stream environment.

Lower Jacks Branch March 2021

B



Lower Jacks Branch March 2021



Lower Jacks Branch March 2021

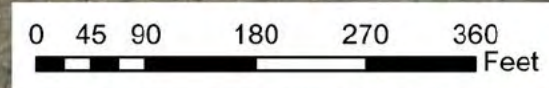
A






Ulysses Creek
Group One Redbird Project
Shelterwood Unit 20
Harvested 2012

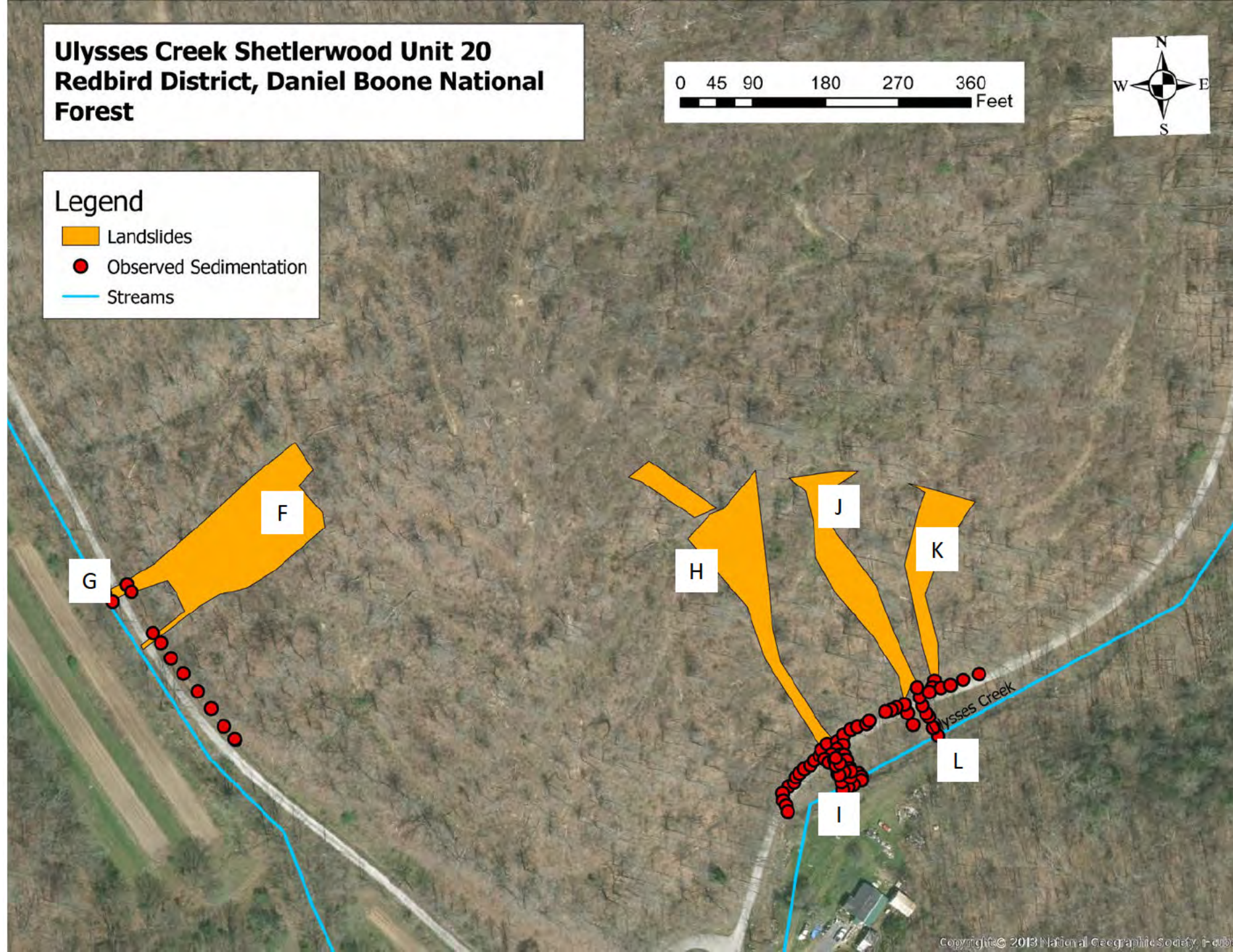
Ulysses Creek Unit 20 landslides first reported to Daniel Boone National Forest in March 2020
Landslides in Ulysses Creek Unit 14 (not pictured here) reported in December 2019

**Ulysses Creek Shetlerwood Unit 20
Redbird District, Daniel Boone National
Forest**

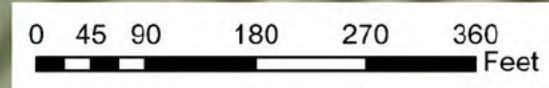


Legend




-  Landslides
-  Observed Sedimentation
-  Streams



**Ulysses Creek Shetlerwood Unit 20
Redbird District, Daniel Boone National
Forest**



Legend

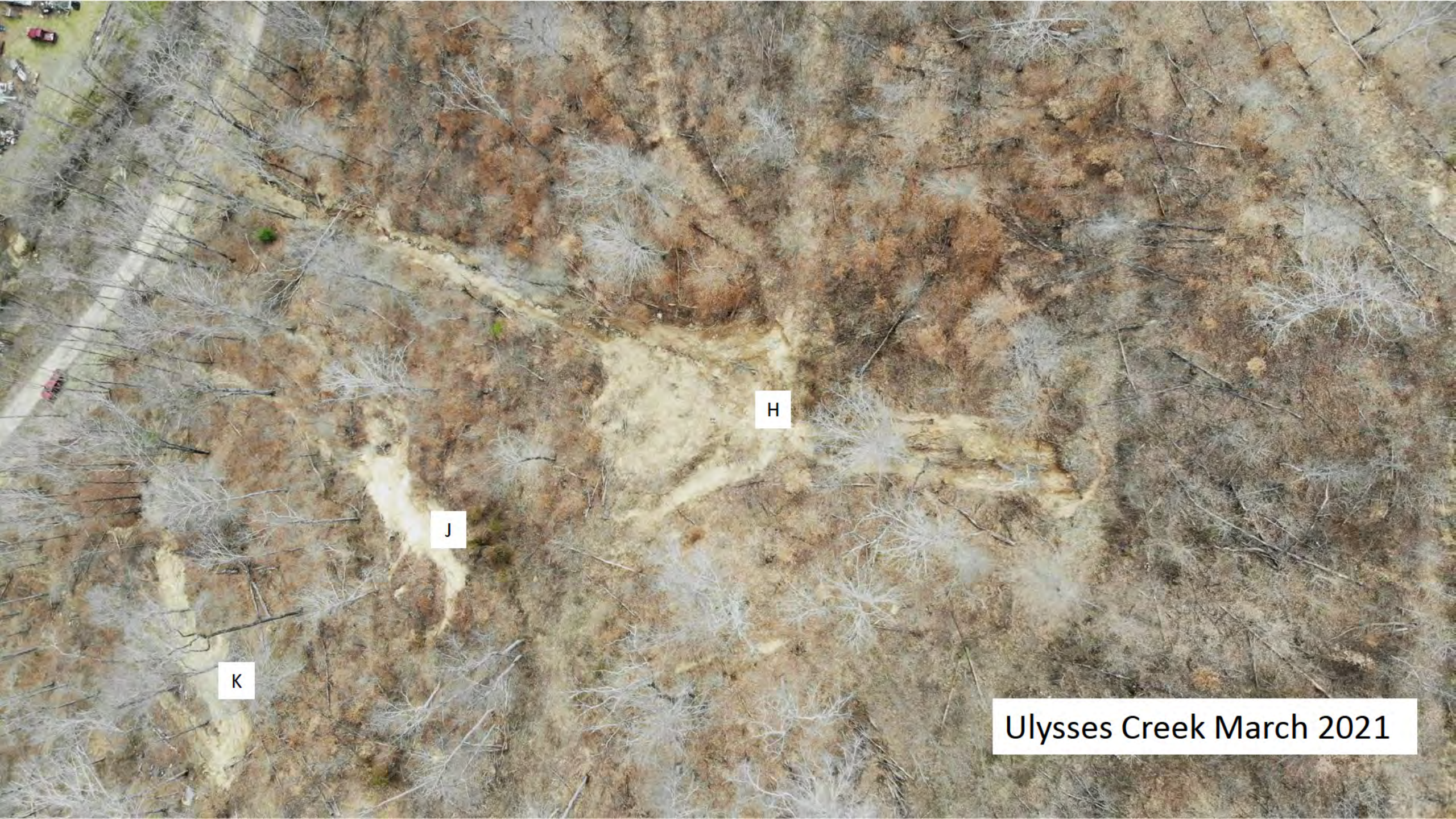
-  Landslides
-  Observed Sedimentation
-  Streams



Ulysses Creek March 2021

F





H

J

K

Ulysses Creek March 2021

H

J

K

Ulysses Creek March 2021

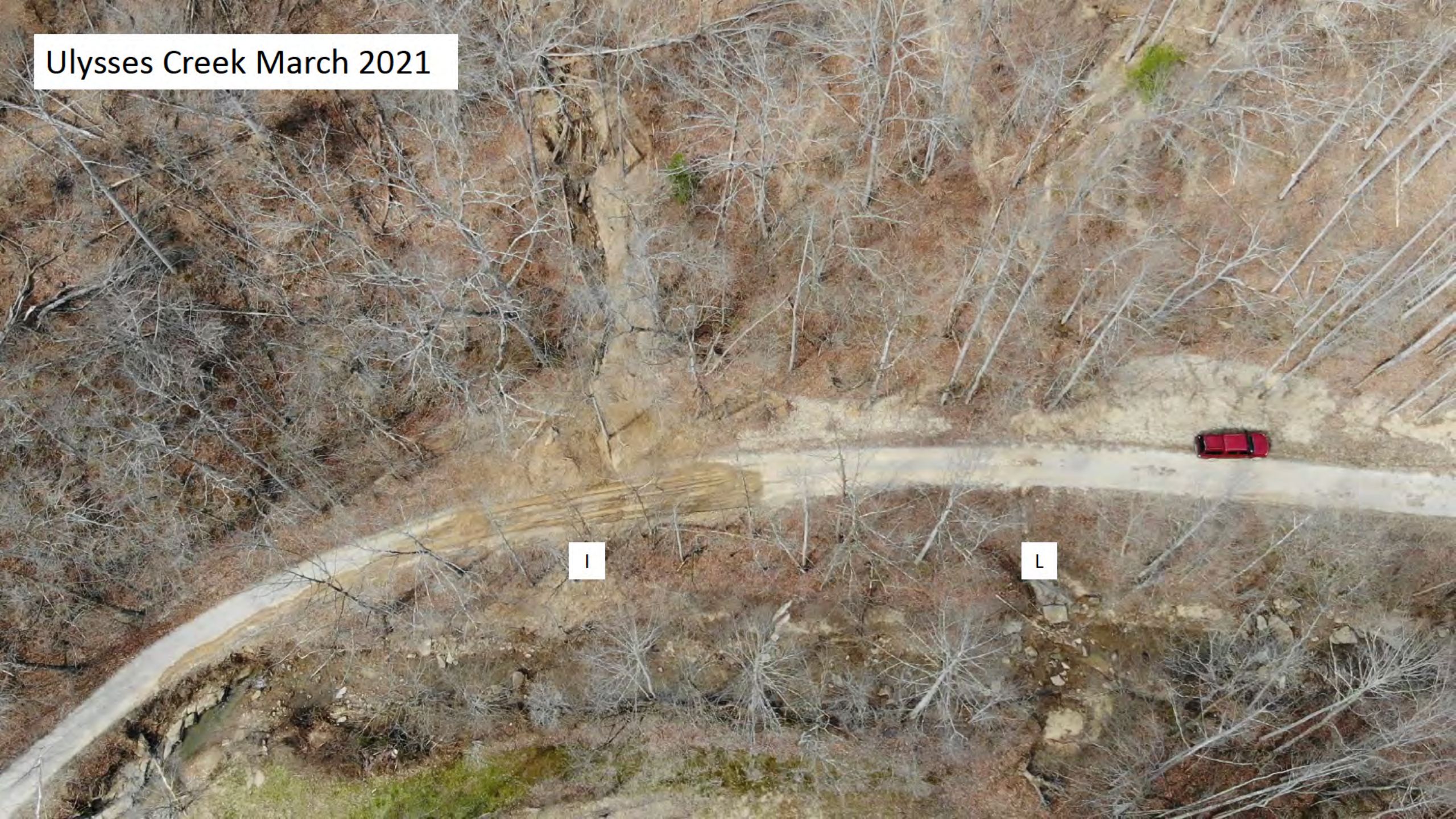
An aerial photograph of a forest landscape. A light brown dirt path or clearing runs vertically through the center-left of the image. The surrounding forest is composed of various types of trees, some with vibrant green foliage and others with bare, greyish branches. Two white labels with black text are overlaid on the image: 'H' is located near the top center, and 'J' is located in the middle right section.

H

Ulysses Creek May 2020

J

Ulysses Creek March 2021



Ulysses Creek May 2020

H



Ulysses Creek March 2021



Ulysses Creek March 2020



Ulysses Creek March 2020



Ulysses Creek March 2021

H

A photograph of a steep, eroded bank of Ulysses Creek in March 2021. The bank is composed of light brown soil and is marked with a white 'H' on the right side. The surrounding area is covered in dry, brown vegetation and bare trees, indicating a late winter or early spring setting.

Ulysses Creek March 2020



Ulysses Creek March 2021



Ulysses Creek March 2021



J

Ulysses Creek March 2021

F

A photograph of a steep, eroded bank of Ulysses Creek in March 2021. The bank is composed of light brown soil and numerous flat, layered rocks. A white label 'F' is placed on the bank. The top of the bank is lined with bare trees and a fallen log.

Ulysses Creek March 2021



Ulysses Creek March 2021

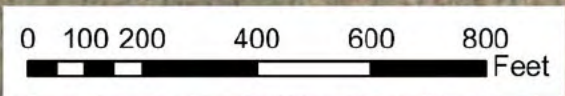
G



Lower Jack's Branch
Group One Redbird Project
Shelterwood Unit 17
Harvested 2017

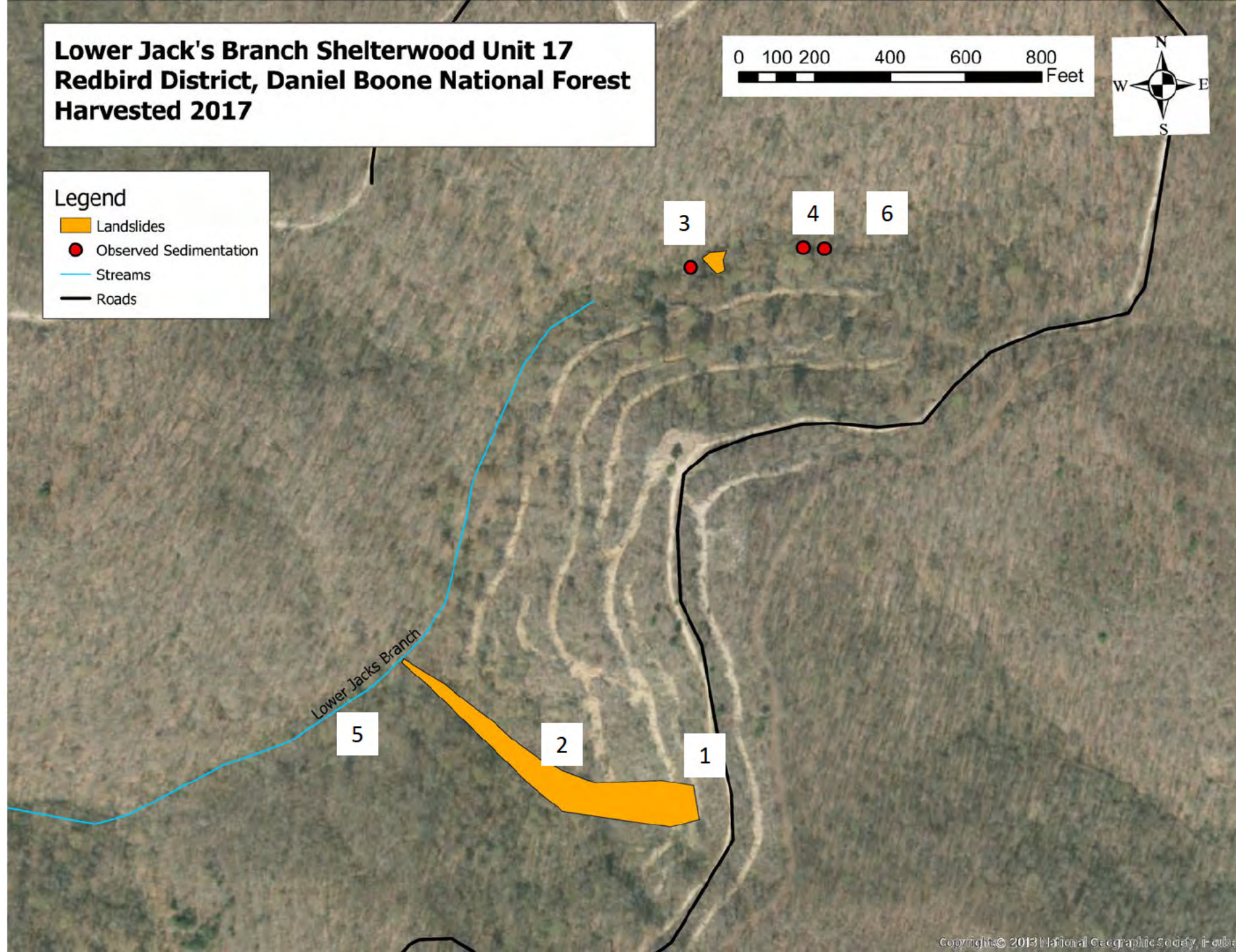
Primary landslide measures over 1000 feet of slope distance. Observed sedimentation not completely denoted because of extreme amount of sediment transported in this landslide.

Lower Jack's Branch Shelterwood Unit 17
Redbird District, Daniel Boone National Forest
Harvested 2017



Legend

- Landslides
- Observed Sedimentation
- Streams
- Roads







**Lower Jack's Branch Shelterwood Unit 17
Redbird District, Daniel Boone National Forest
Harvested 2017**

0 100 200 400 600 800
Feet



Legend

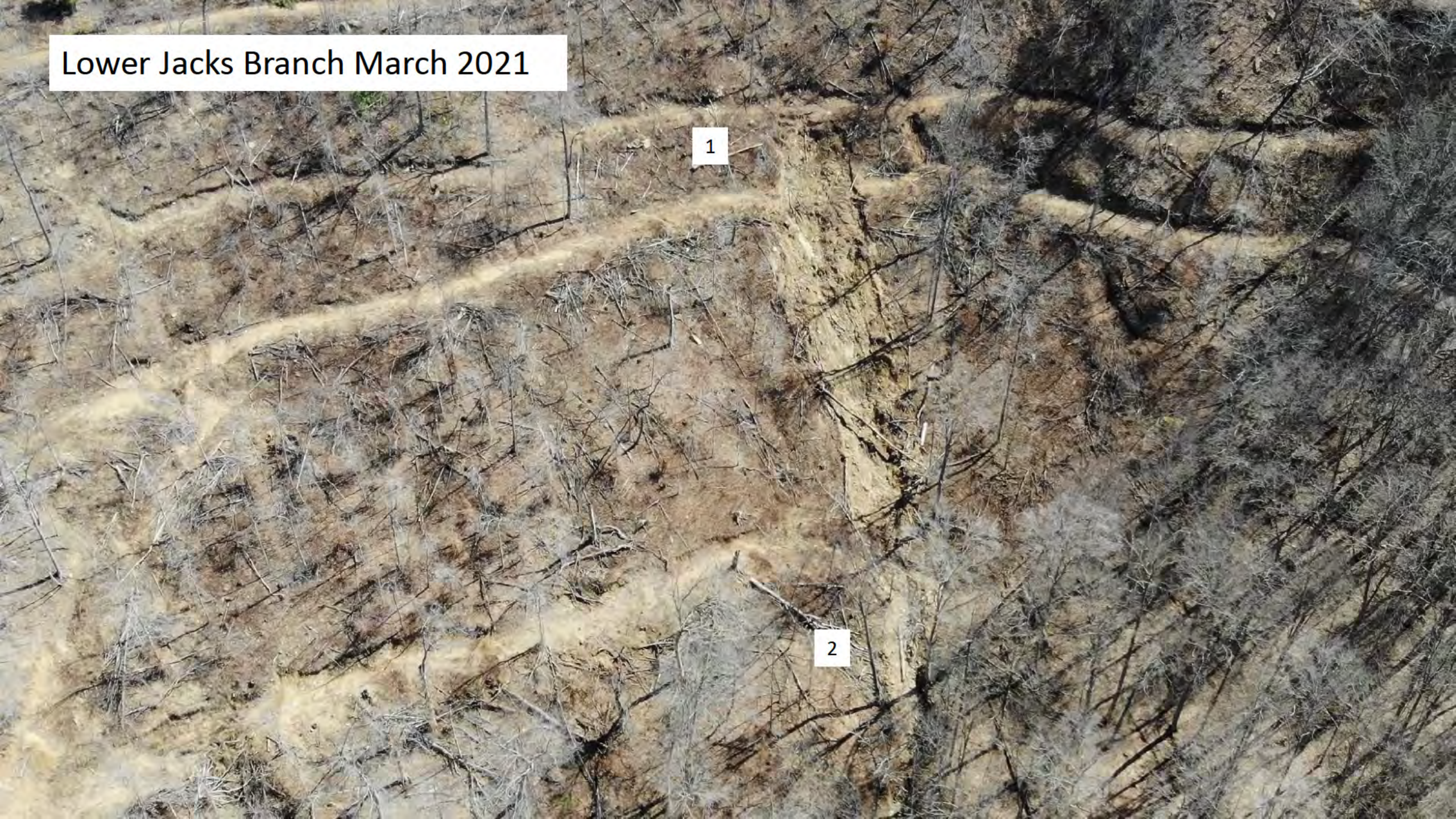
-  Landslides
-  Observed Sedimentation
-  Streams
-  Roads



Lower Jacks Branch March 2021

1

2



Lower Jacks Branch March 2021

2



Lower Jacks Branch March 2021

3

Lower Jacks Branch March 2021



1

Lower Jacks Branch March 2021

2

A photograph of a small waterfall in a rocky stream bed. The water is cascading over a series of dark, flat rocks. The surrounding banks are composed of reddish-brown soil and loose rocks. In the foreground, there are several fallen, brown leaves. A white box with the number '2' is positioned on the left bank, near the base of the waterfall.

Lower Jacks Branch March 2021

2



Lower Jacks Branch March 2021



Lower Jacks Branch March 2021

4

A photograph of a rocky stream bed with a small waterfall. The rocks are brown and covered with fallen leaves and some moss. A small white box with the number '4' is placed on the rocks.

Lower Jacks Branch March 2021

4

A photograph of a stream bed. A large, moss-covered log lies horizontally across the right side of the frame. The stream bed is composed of numerous light-colored, flat rocks and stones of various sizes. The water is shallow and clear, reflecting the surrounding environment. The banks are covered with dry, brown leaves and some green moss. A small white box with the number '4' is positioned in the center of the image.

Lower Jacks Branch March 2021

5

A photograph of a small waterfall or stream flowing over rocks in a wooded area. The water is clear and turbulent as it falls. The surrounding rocks are mossy and covered with fallen leaves. A small white box with the number 5 is overlaid on the water.

Lower Jacks Branch March 2021

6



Granny's Branch
Group One Redbird Project
Shelterwood Unit 13
Harvested 2017





Harvest extends to the very edge of a bench mine wall, with slash and debris piled over the edge and sedimentation down wall at several points. Documented landslide flows into upper tributary of Granny's Branch.

Granny's Branch Shelterwood Unit 13
Redbird District, Daniel Boone National Forest
Harvested 2017

0 80 160 320 480 640 Feet



Legend

-  Landslides
-  Observed Sedimentation
-  Streams
-  Roads

7



8







Granny's Branch Shelterwood Unit 13
Redbird District, Daniel Boone National Forest
Harvested 2017

0 80 160 320 480 640 Feet



Legend

-  Landslides
-  Observed Sedimentation
-  Streams
-  Roads



Granny's Branch March 2021



Granny's Branch March 2021

7



Granny's Branch March 2021

8

A photograph of a stream in a forest, labeled '8'. The stream is shallow and muddy, flowing through a wooded area with many bare trees and fallen branches. The ground is covered in fallen leaves and twigs. The background shows a steep bank with more trees and some green shrubs.