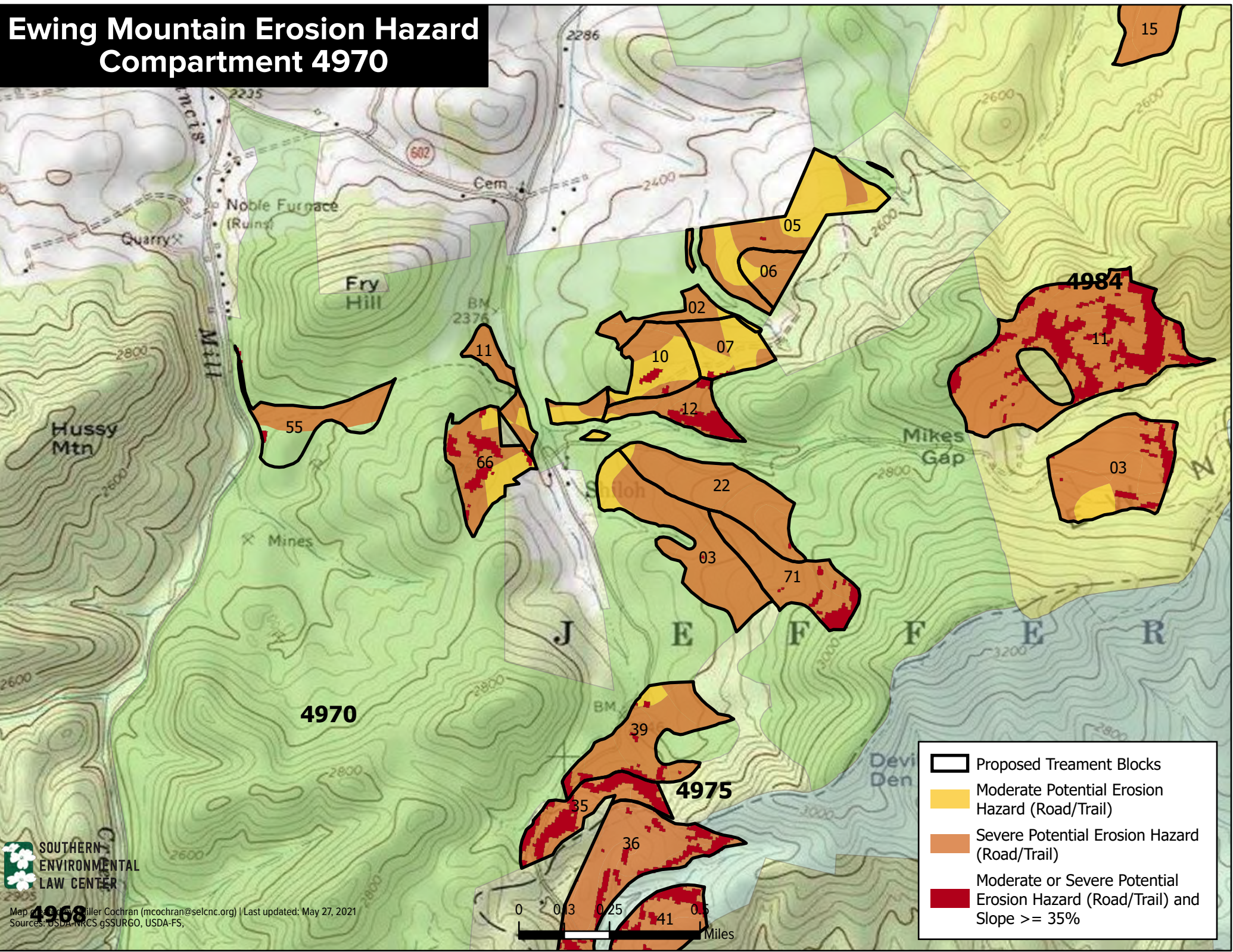
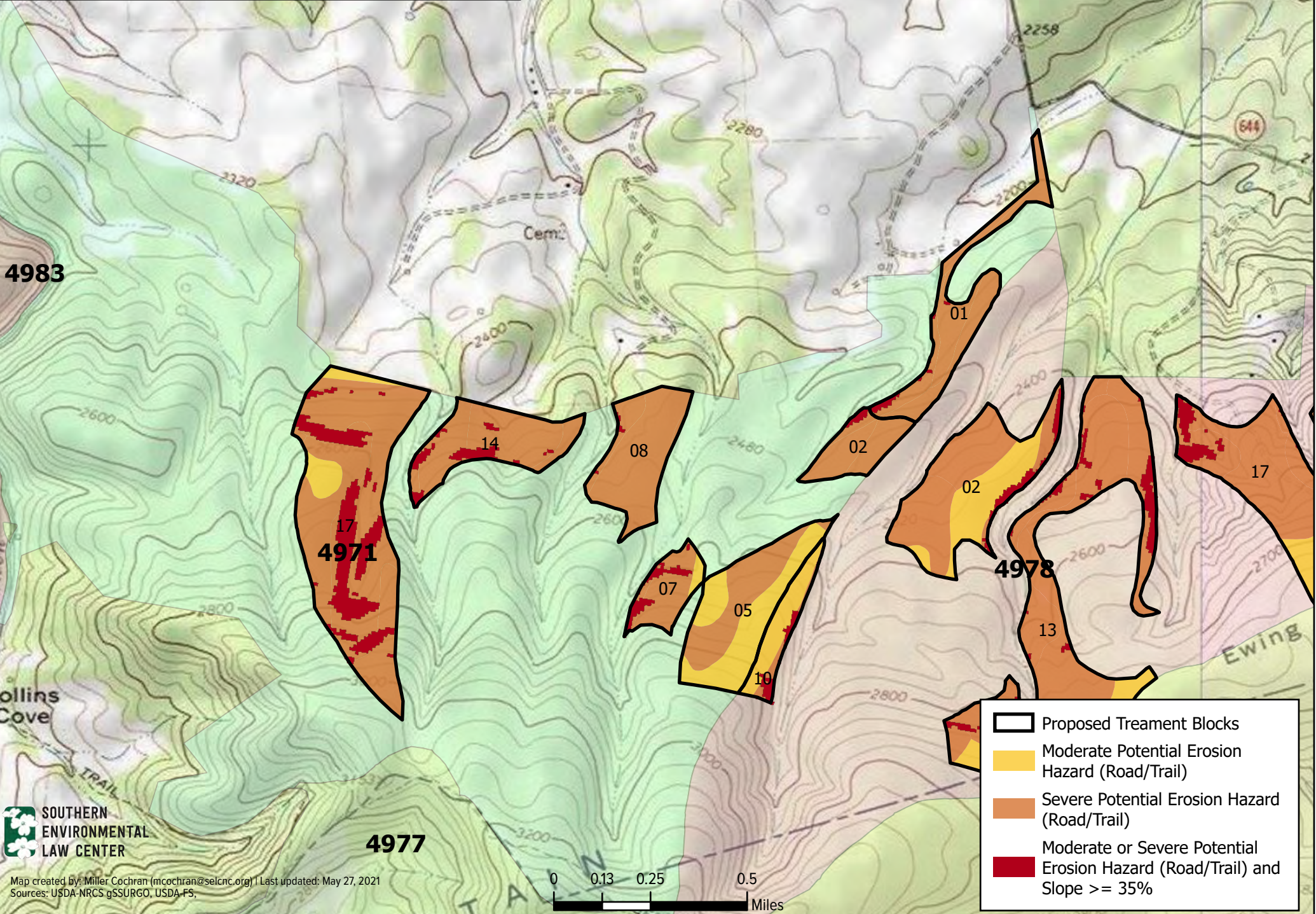


Ewing Mountain Erosion Hazard Compartment 4970



Ewing Mountain Erosion Hazard Compartment 4971



 SOUTHERN
ENVIRONMENTAL
LAW CENTER

Map created by: Miller Cochran (mcochran@selcnc.org) | Last updated: May 27, 2021
Sources: USDA-NRCS gSSURGO, USDA-FS,

**Ewing Mountain Erosion Hazard
Compartment 4972**

The map displays a topographic view of Ewing Mountain with various erosion hazard compartments outlined. The central compartment is labeled 4972. Other labeled compartments include 4970, 4973, 4975, 4977, and 4984. Each compartment is subdivided into numbered blocks (e.g., 01, 02, 03, 04, 06, 07, 09, 10, 11, 12, 15, 16, 22, 25, 29, 31, 35, 36, 39, 41, 71). The map features contour lines indicating elevation, with labels such as 2400, 2600, 2800, 3000, and 3200. Key geographical features include Mike's Gap, Devils Den, and several creeks and branches like Jones Branch, Cold Spring Branch, and Lick Branch. A legend in the bottom right corner defines the symbols used: a black outline for 'Proposed Treatment Blocks', yellow for 'Moderate Potential Erosion Hazard (Road/Trail)', orange for 'Severe Potential Erosion Hazard (Road/Trail)', and red for 'Moderate or Severe Potential Erosion Hazard (Road/Trail) and Slope >= 35%'. A scale bar at the bottom indicates distances from 0 to 0.6 miles. The map is credited to the Southern Environmental Law Center, with sources listed as USDA-NRCS gSSURGO and USDA-FS.

Legend:


- Proposed Treatment Blocks
- Moderate Potential Erosion Hazard (Road/Trail)
- Severe Potential Erosion Hazard (Road/Trail)
- Moderate or Severe Potential Erosion Hazard (Road/Trail) and Slope $\geq 35\%$


Map Information:


Map created by: Miller Cochran (mcochran@selc.org) | Last updated: May 27, 2021
Sources: USDA-NRCS gSSURGO, USDA-FS


Map created by: Miller Cochran (mcochran@seicnc.org) | Last updated: May 27, 2021
Sources: USDA-NRCS gSSURGO, USDA-FS,

Map created by: Miller Cochran (mcochrane)
Sources: USDA-NRCS, SSURGO, USDA-FS,

 Proposed Treatment Blocks

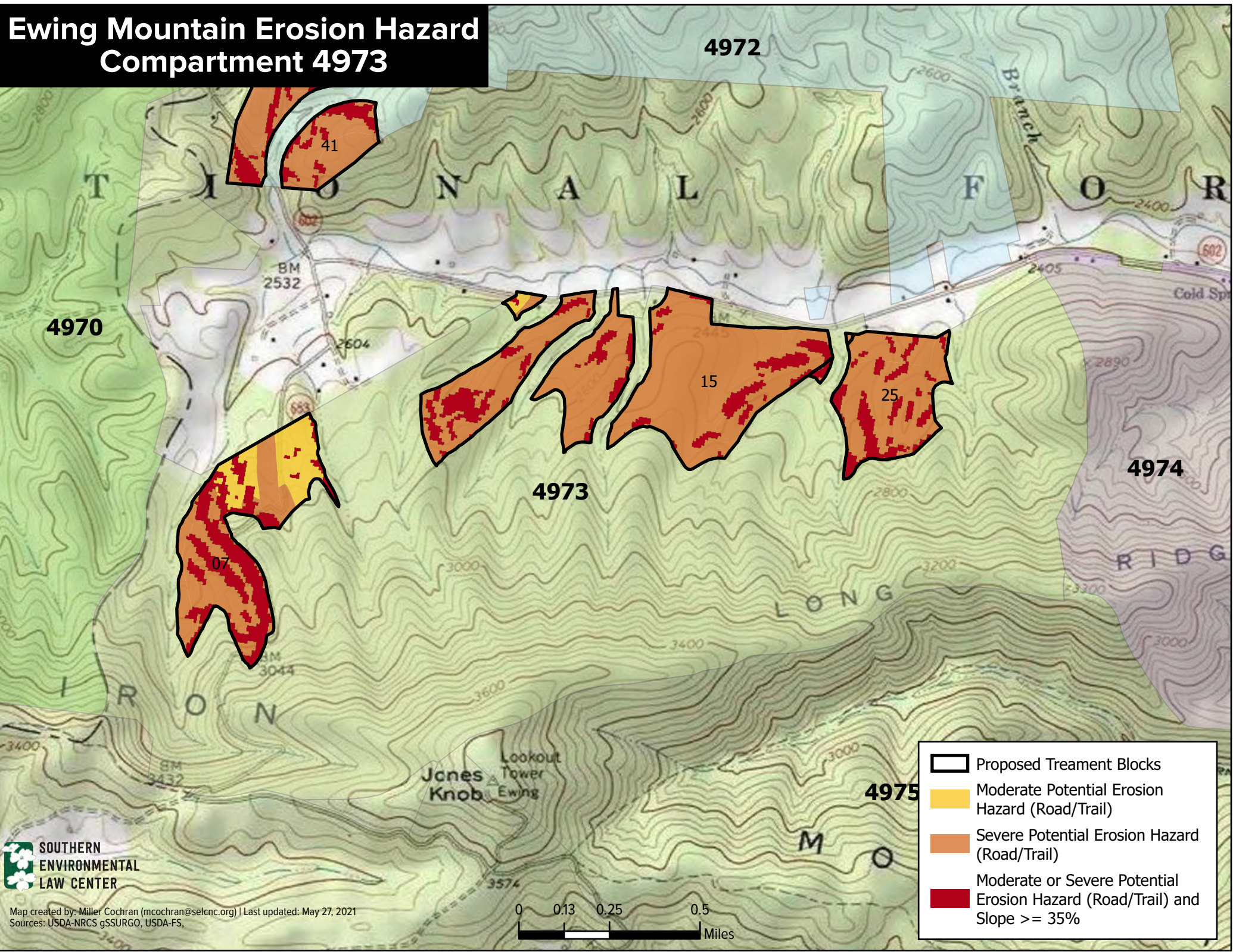
 Moderate Potential Erosion Hazard (Road/Trail)

 Severe Potential Erosion Hazard (Road/Trail)

 Moderate or Severe Potential Erosion Hazard (Road/Trail) and Slope $\geq 35\%$

A horizontal scale bar with tick marks at 0, 0.15, 0.3, and 0.6. The word "Miles" is written at the right end.





Ewing Mountain Erosion Hazard Compartment 4973



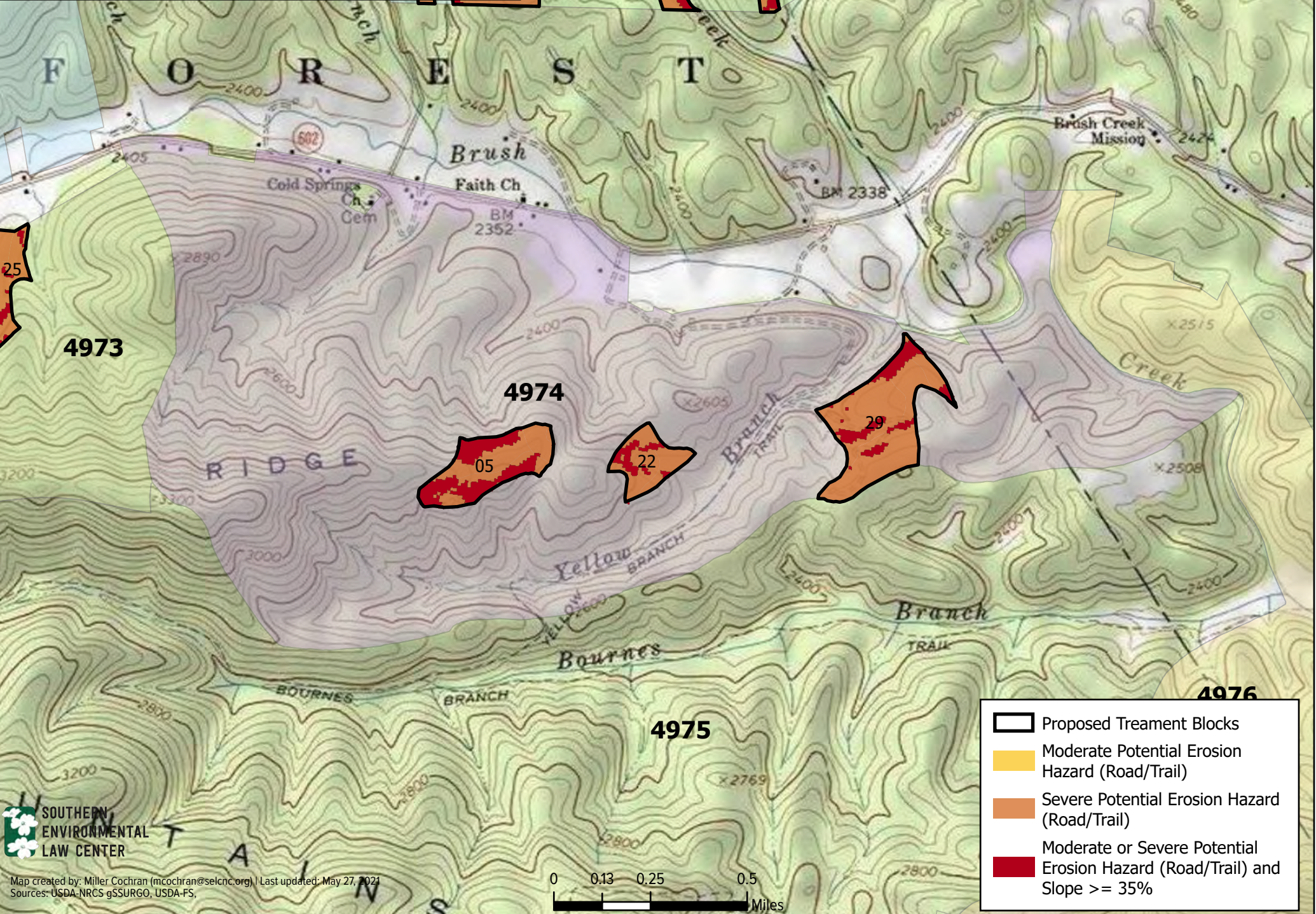
 SOUTHERN
ENVIRONMENTAL
LAW CENTER

Map created by: Miller Cochran (mcochran@selcnc.org) | Last updated: May 27, 2021
Sources: USDA-NRCS gSSURGO, USDA-FS,

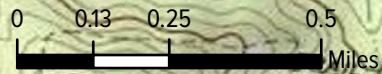
0 0.13 0.25 0.5
Miles

-  Proposed Treatment Blocks
-  Moderate Potential Erosion Hazard (Road/Trail)
-  Severe Potential Erosion Hazard (Road/Trail)
-  Moderate or Severe Potential Erosion Hazard (Road/Trail) and Slope $\geq 35\%$

Ewing Mountain Erosion Hazard Compartment 4974

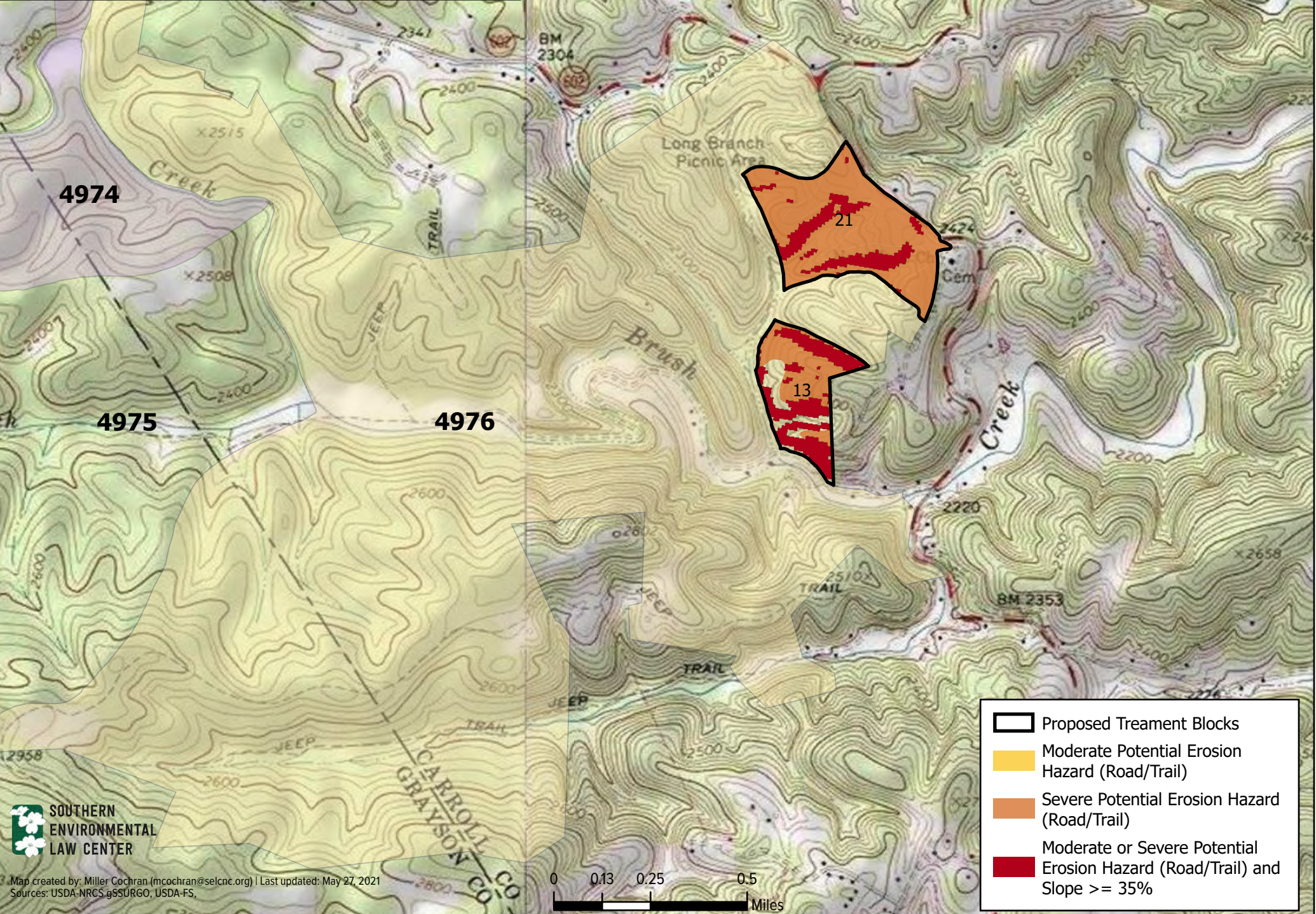


Map created by: Miller Cochran (mcochran@selcnc.org) | Last updated: May 27, 2021
Sources: USDA-NRCS gSSURGO, USDA-FS.



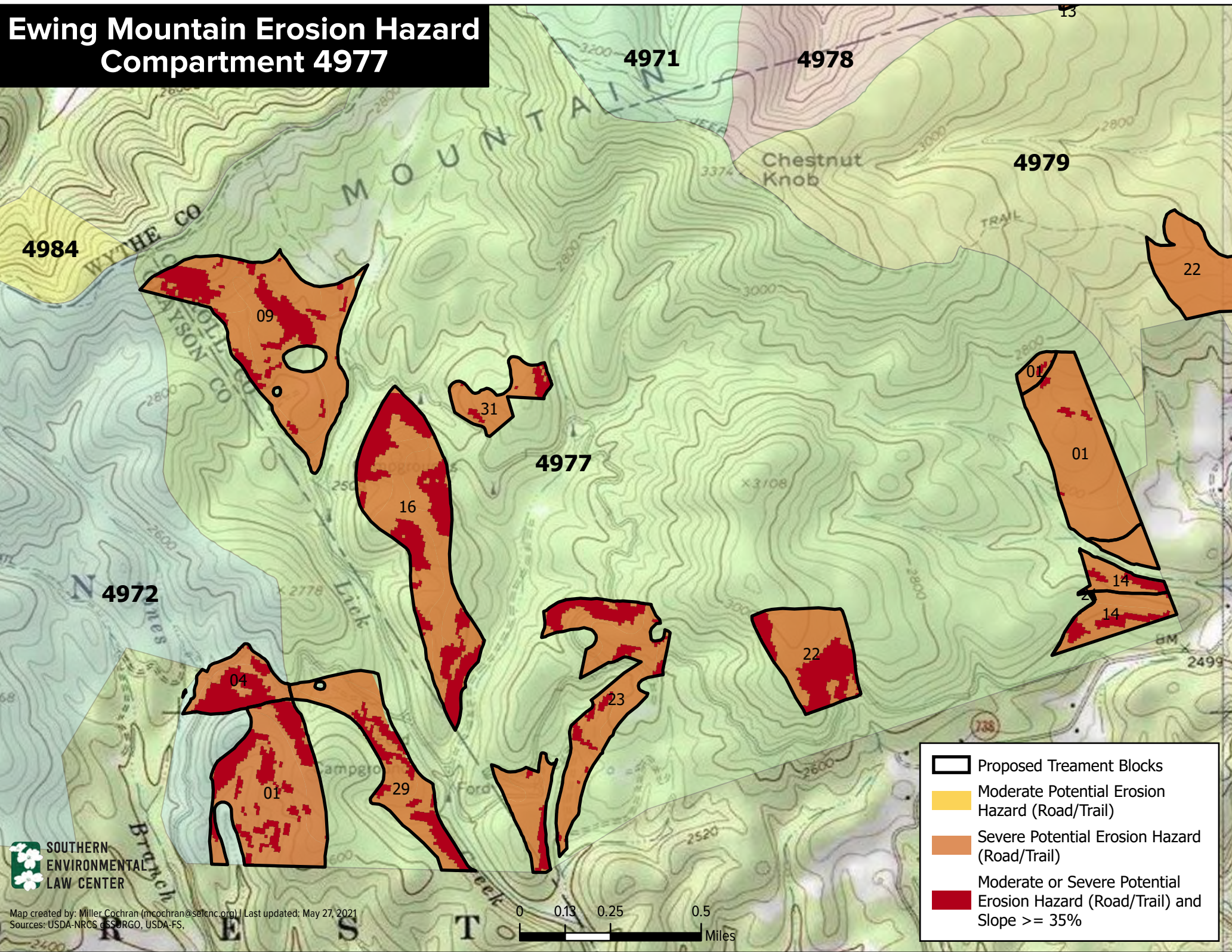
- Proposed Treatment Blocks
- Moderate Potential Erosion Hazard (Road/Trail)
- Severe Potential Erosion Hazard (Road/Trail)
- Moderate or Severe Potential Erosion Hazard (Road/Trail) and Slope $\geq 35\%$

Ewing Mountain Erosion Hazard Compartment 4976

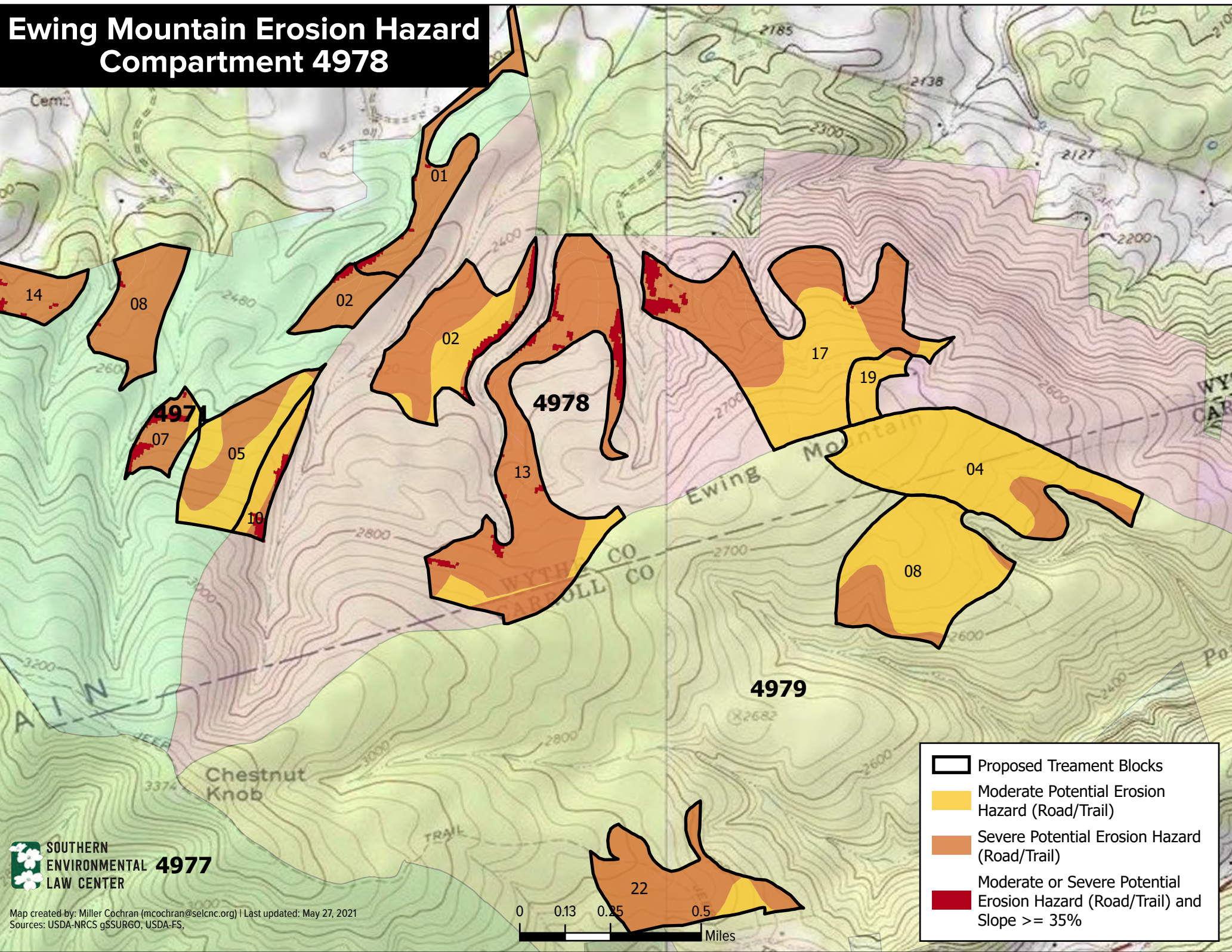


Map created by: Miller Cochran (mcochran@selcnc.org) | Last updated: May 27, 2021
Sources: USDA-NRCS gSSURGO, USDA-FS,

Ewing Mountain Erosion Hazard Compartment 4977



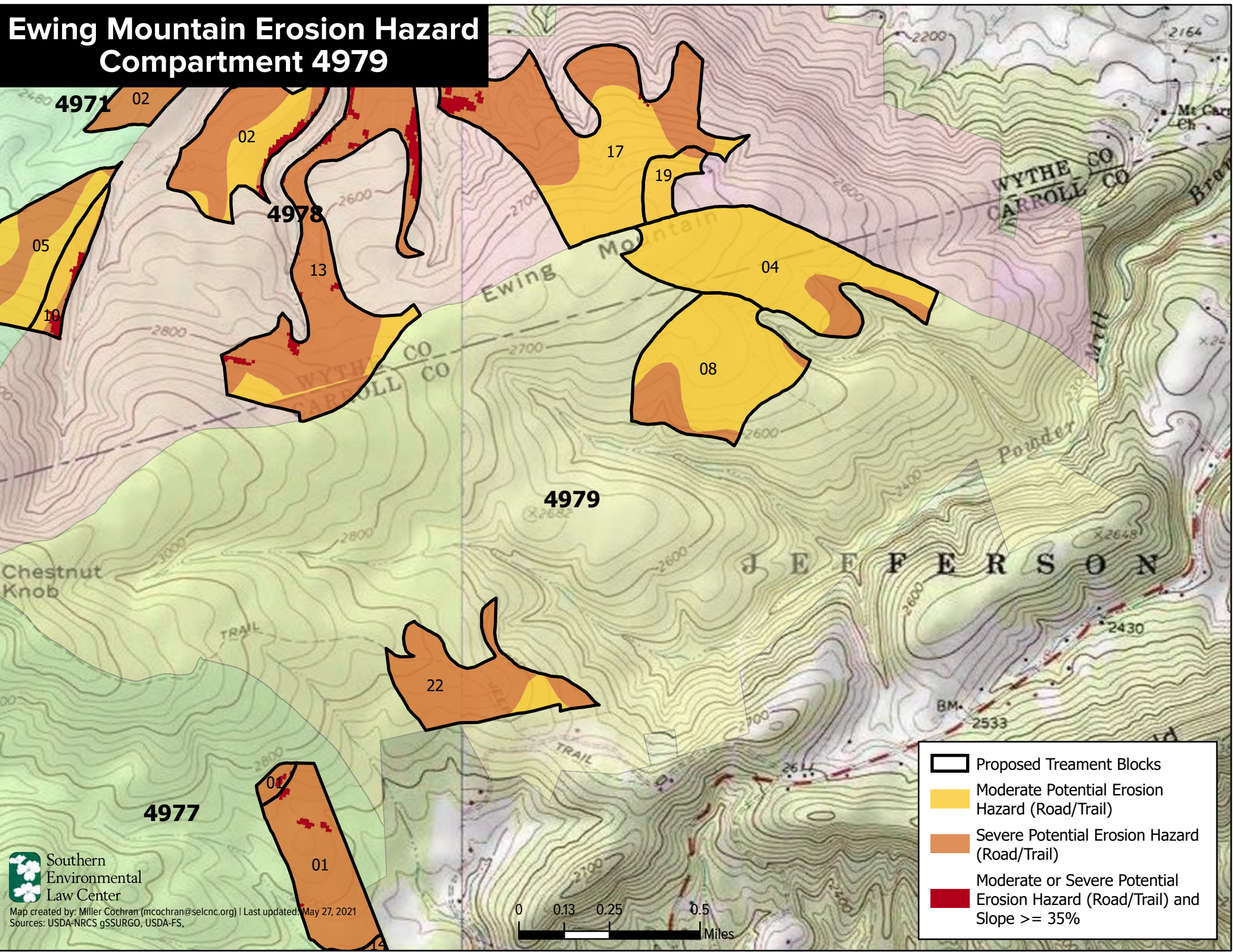
Ewing Mountain Erosion Hazard Compartment 4978



SOUTHERN ENVIRONMENTAL LAW CENTER 4977

Map created by: Miller Cochran (mcochran@selcnc.org) | Last updated: May 27, 2021
Sources: USDA-NRCS gSSURGO, USDA-FS,

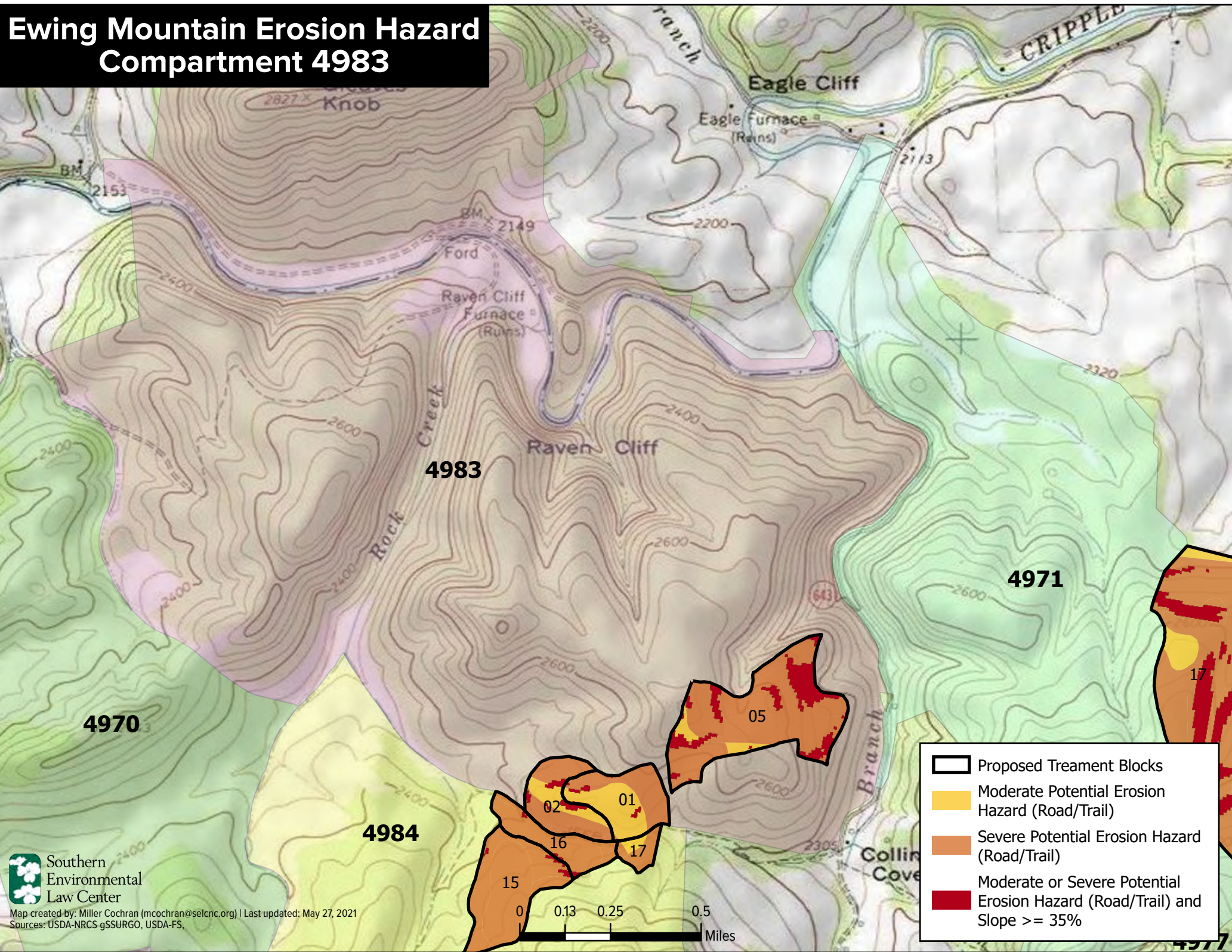
Ewing Mountain Erosion Hazard Compartment 4979



Southern
Environmental
Law Center

Map created by: Miller Cochran (mcochran@selcnc.org) | Last updated: May 27, 2021
Sources: USDA-NRCS gSSURGO, USDA-FS,

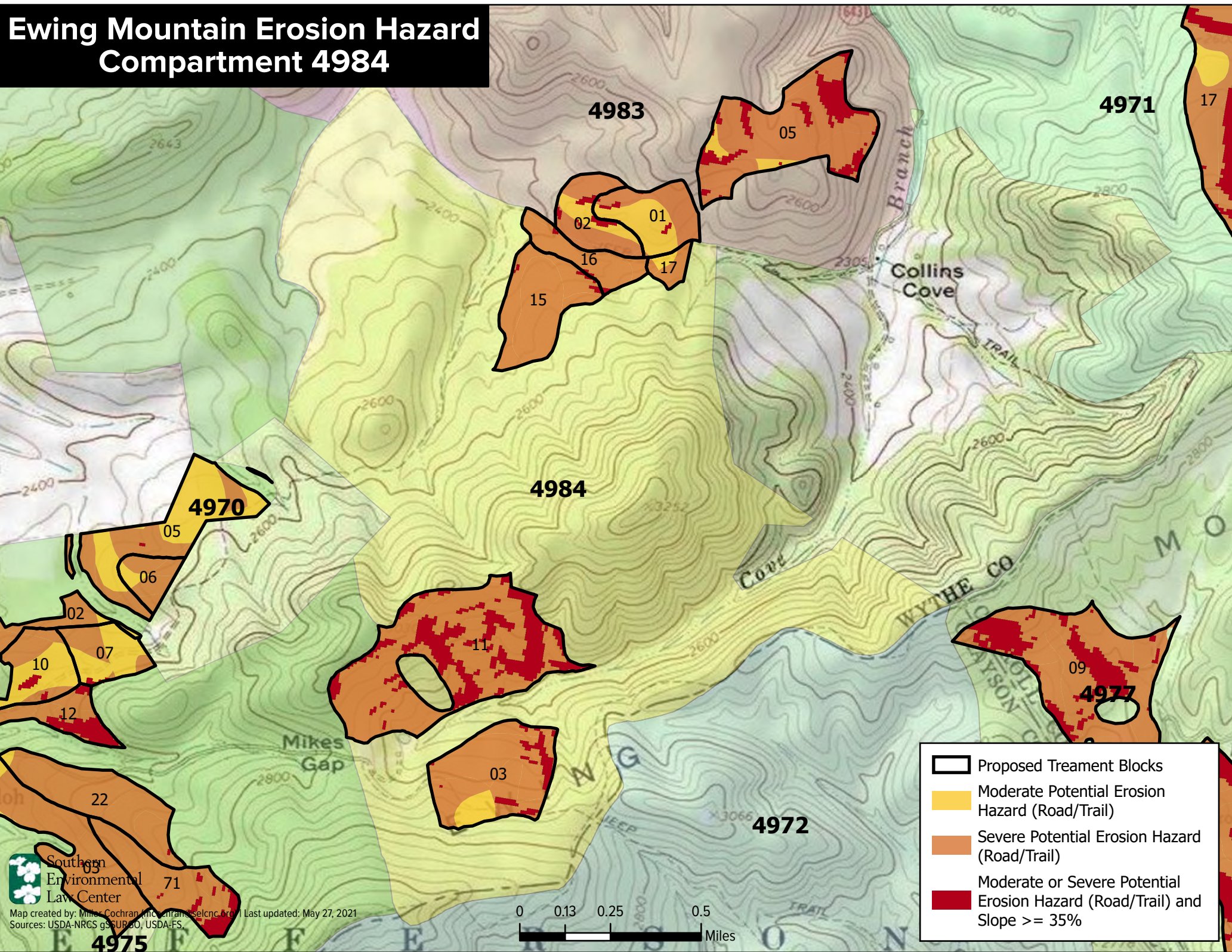
Ewing Mountain Erosion Hazard Compartment 4983



Southern
Environmental
Law Center

Map created by: Miller Cochran (mcochran@selcnc.org) | Last updated: May 27, 2021
Sources: USDA-NRCS gSSURGO, USDA-FS,

Ewing Mountain Erosion Hazard Compartment 4984



Map created by: Miles Cochran, mcochran@selcnc.org | Last updated: May 27, 2021
Sources: USDA-NRCS g5SUB-00, USDA-FS.