

KELSEY CREEK RANGE

NOTES:

- 1: LONG RANGE PRECISION COURSE OFFERS KNOWN AND UNKNOWN POINT TARGETS FOR LONG DISTANCE, LOW VOLUME, PRECISION MARKSMANSHIP
- 2: 3D ARCHERY COURSES COVER CHALLENGING AND UNIQUE TERRAIN
- 3: RIFLE GALLERIES MAY USE A TRADITIONAL FOOTPRINT OR A 'TARGET FIELD' OF KNOWN AND UNKNOWN DISTANCE TARGETS THAT MORE CLOSELY RELATE TO HUNTING SCENARIOS
- 4: OMNIDIRECTIONAL GALLERIES SUPPORT CONTEMPORARY SPORT SHOOTING
- 5: TOPOGRAPHY WAS LEVERAGED TO REDUCE CONSTRUCTION LEVEL OF EFFORT AS WELL AS IMPROVING SAFETY AND REDUCING ENVIRONMENTAL IMPACTS

POINTS FOR CONSIDERATION:

- PHASED BUILDOUT
- DEDICATED RIFLE ZERO RANGE, LOW VOLUME, KNOWN DISTANCE
- SITE ACCESS CONTROL
- MOVEMENT CONTROL WITHIN THE AREA, LIMITING ACCESS
- PERMANENT REACTIVE TARGETS

PROS:

- 1: WIDE VARIETY OF MARKSMANSHIP
- 2: TERRAIN FAVORS UNIQUE OPPORTUNITIES
- 3: REMOTE LOCATION WITH SIGNIFICANT STANDOFF FOR BOTH BALLISTIC AND ACOUSTIC CONSIDERATIONS
- 4: NO CONFLICTING USES IN THE AREA
- 5: RIFLE RANGE AREA OFFERS A HUNTING TYPE SCENARIO CHALLENGING MARKSMANSHIP WITH INCLINED AND DECLINED SHOTS ON REACTIVE, PERMANENT GAME SPECIES SILHOUETTES
- 6: NO TARGET ACCESS TO USERS

CONS:

- 1: CONTROLLING AND LIMITING ACCESS WILL REQUIRE ANTI-VEHICULAR GRADING, BARRIERS
- 2: FENCING, SIGNING, AND RELATED WILL BE CRITICAL AND RESILIENT

3D ARCHERY COURSE

11 poles on Archery Course

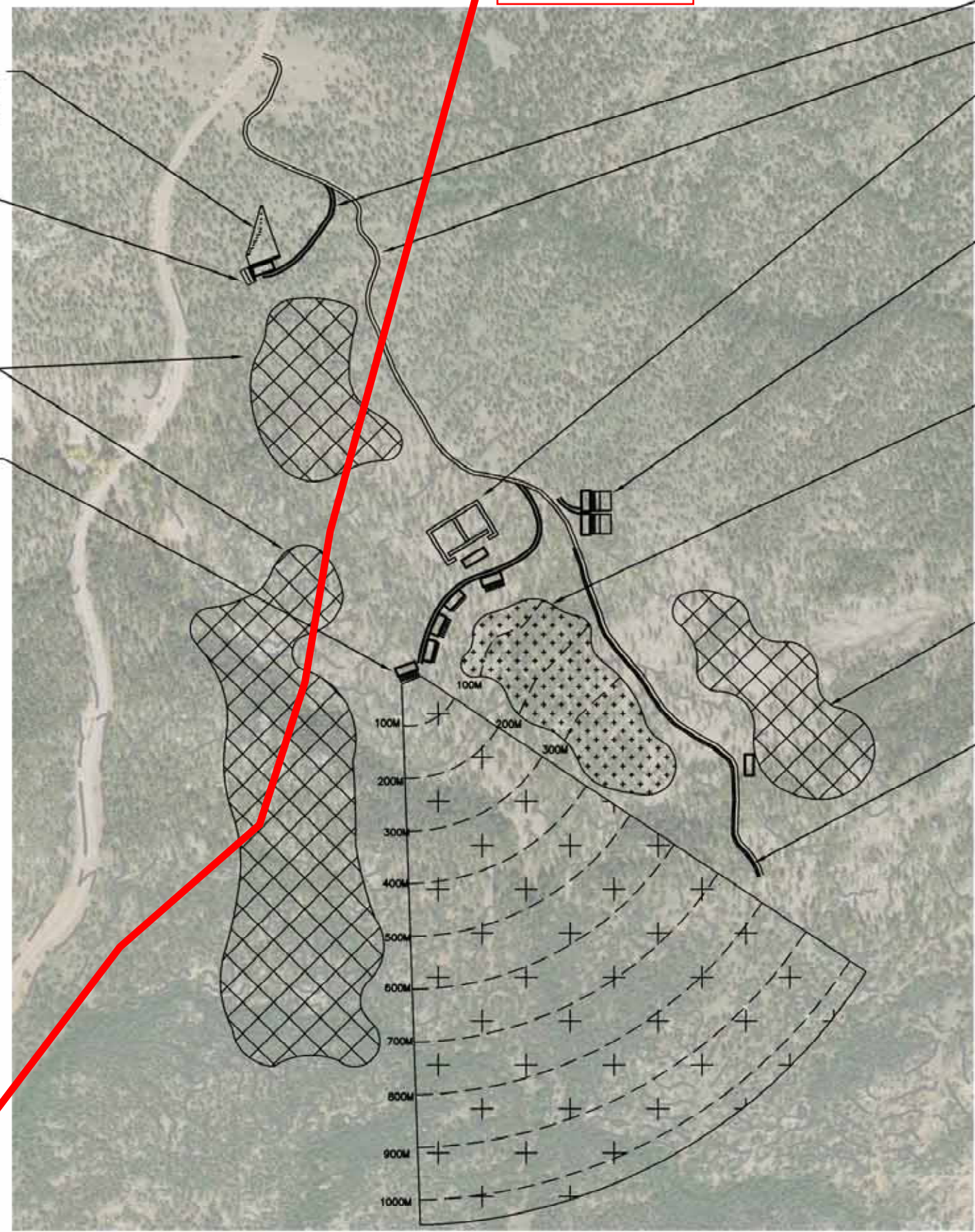
LONG RANGE PRECISION RIFLE RANGE (SEE NOTE)

TRADITIONAL ARCHERY RANGE

BEGINNER ARCHERY RANGE

A Phase line from tx 34444

A Phase line to tx12630 & others



DRAFT



App	Rev	Date	Description

DOUGLAS COUNTY COLORADO
 Engineering Division
 100 Third Street
 Castle Rock, Colorado 80104
 (303) 660-7490

KELSEY CREEK RANGE

Design	Drawn	Checked	Date	Created	Date Modified	Scale	Job No.

SHEET

OF SHEETS

© 2018 Douglas County, Colorado. All rights reserved. Kelsey Creek Range Master Plan