

GEOLOGIC MAP OF THE STIBNITE QUADRANGLE, VALLEY COUNTY, IDAHO

David E. Stewart, Eric D. Stewart, Reed S. Lewis, Kerrie N. Weppner, and Vincent H. Ilsborn

2016

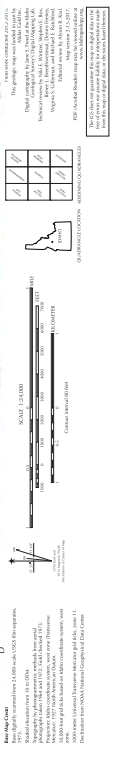
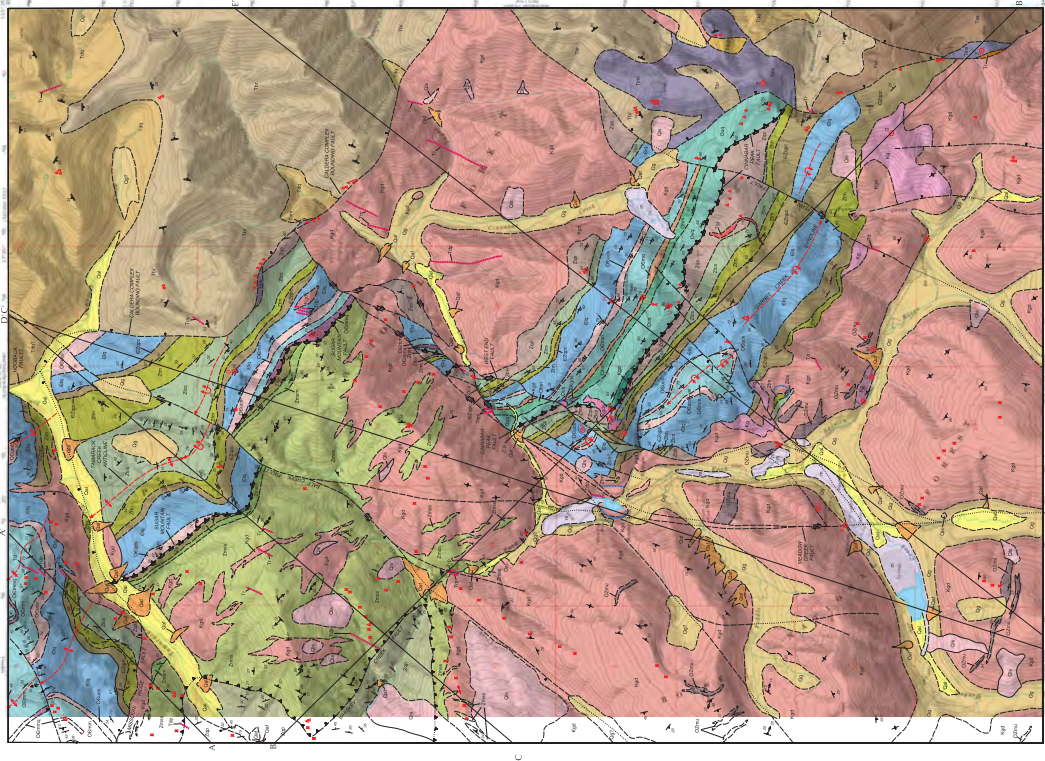
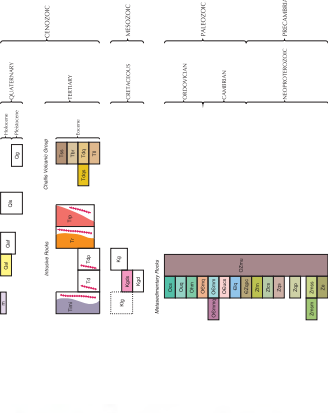


Table 1. Lithologic units in the Stibnite Quadrangle, Valley County, Idaho. The table lists various geological units with their names, symbols, and descriptions. It includes units such as Precambrian, Paleozoic, and Cenozoic rocks.

Figure 1. Geologic map of the Stibnite Quadrangle, Valley County, Idaho. The map shows the distribution of various geological units and features. The map is oriented with North at the top.



- INTRODUCTION
The Stibnite quadrangle is located in the southeastern corner of Valley County, Idaho. It is bounded by the Snake River to the west and the Stibnite River to the east. The map shows the distribution of various geological units and features. The map is oriented with North at the top.

- SYMBOLS
Geologic symbols used on this map are based on the International Geologic Map Symbols (IGMS) and the Idaho Geologic Map Symbols (IGMS-IDA). The symbols are used to represent different geological units and features.

- DESCRIPTION OF MAP UNITS
This section describes the various geological units shown on the map. It includes information about the age, composition, and structure of each unit. The units are color-coded to match the geologic map.

- SEDIMENTARY DEPOSITS
This section describes the sedimentary deposits shown on the map. It includes information about the type of sediment, the depositional environment, and the age of the deposits. The deposits are color-coded to match the geologic map.

MINERALIZATION
This section discusses the mineralization in the Stibnite Quadrangle. It describes the types of minerals found, their distribution, and the geological conditions that led to their formation. The minerals are color-coded to match the geologic map.

STRUCTURE
This section discusses the structural geology of the Stibnite Quadrangle. It describes the faults, folds, and other structural features that have shaped the region. The structures are color-coded to match the geologic map.

CONCLUSIONS
This section summarizes the findings of the geologic map. It discusses the overall geological history of the Stibnite Quadrangle and the implications of the map for future research and resource management.

ACKNOWLEDGMENTS
This section acknowledges the individuals and organizations that provided support and assistance during the preparation of the geologic map. It includes names and affiliations of the contributors.

WHIPPEN CREEK FAULT
This section discusses the Whippen Creek Fault, a major fault in the Stibnite Quadrangle. It describes the fault's location, orientation, and the geological units it separates.

OTHER FAULTS
This section discusses other faults in the Stibnite Quadrangle, including the Stibnite River Fault and the Snake River Fault. It describes their characteristics and their relationship to the Whippen Creek Fault.

REFERENCES
This section lists the references cited in the geologic map. It includes books, articles, and other publications that provide information about the geology of the Stibnite Quadrangle.

ACKNOWLEDGMENTS
This section acknowledges the individuals and organizations that provided support and assistance during the preparation of the geologic map. It includes names and affiliations of the contributors.



