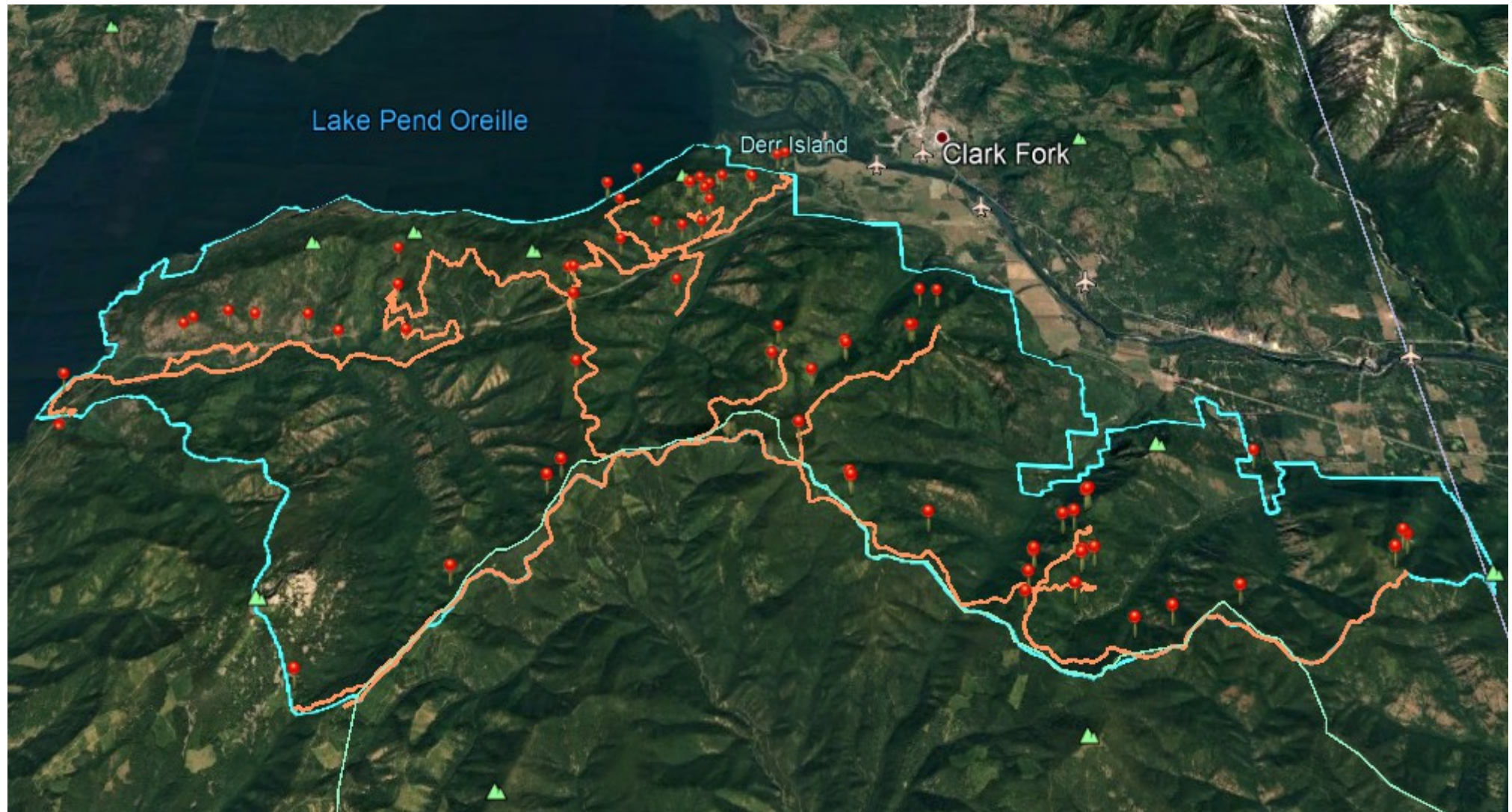


Gate and Barrier Effectiveness Inventory for the Buckskin-Saddle EA, IPNF August 15-16, 2020

Prepared for the Alliance for the Wild Rockies by
Paul Sieracki, MS Geospatial Analyst and Wildlife Biologist.



Acronyms and Road color key

PAM = Proposed Action Map.

G = Gate or Barrier.

White Roads are designated Closed on PAM.

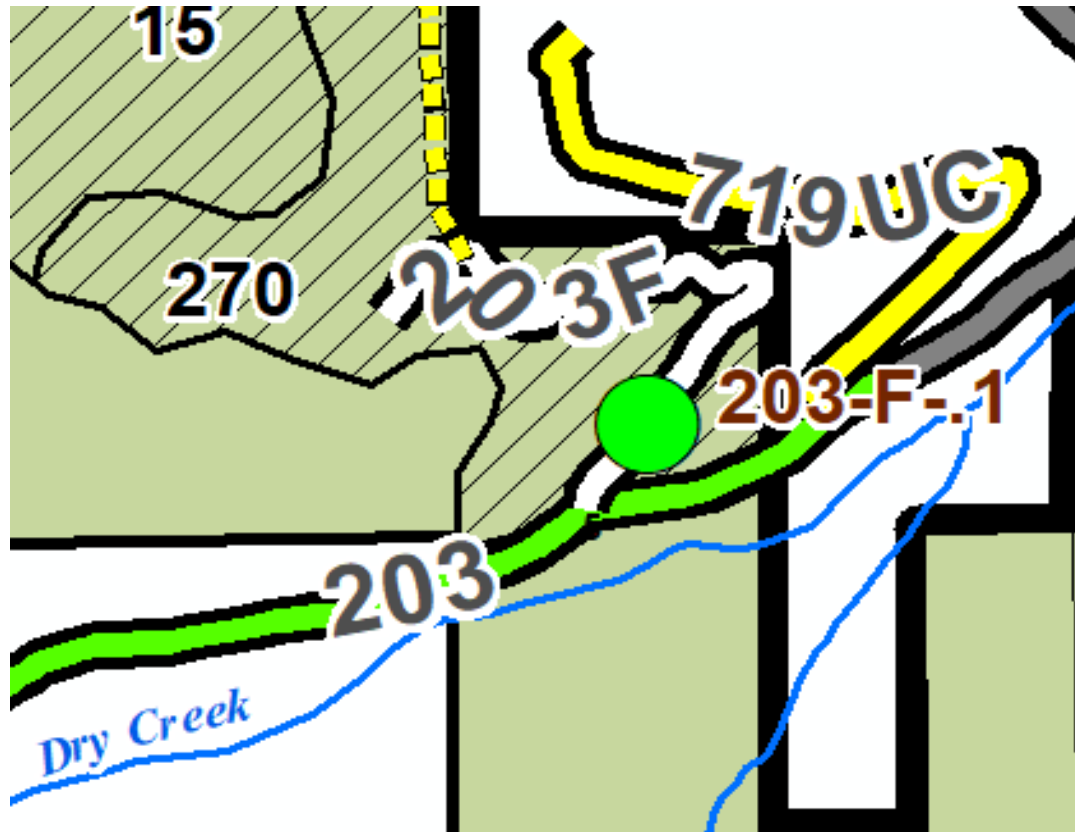
Yellow-Green Roads are designated
“Undetermined” on PAM.

Orange Roads are seasonally restricted.

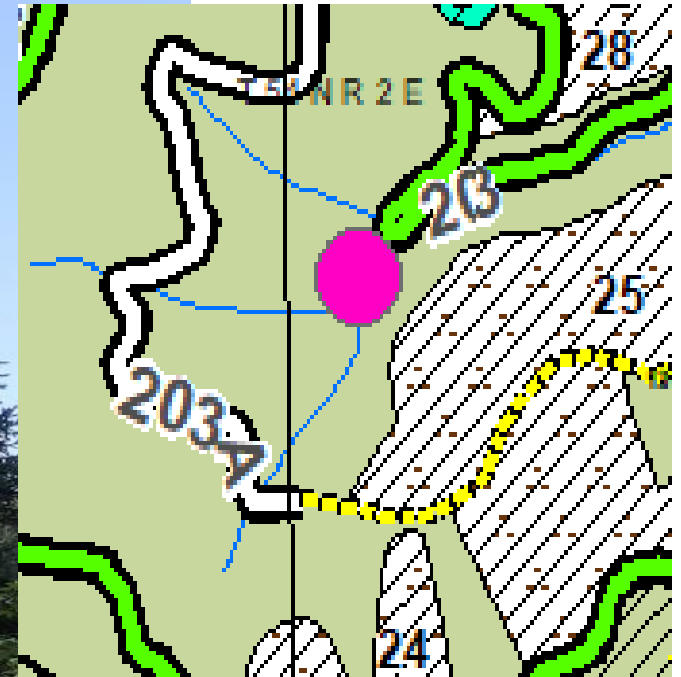
Green Roads are open year-round.

Jct. Road 203F x 203. Gate (G) 201-F-1

Gate closed, locked, grown in past it but there is a trail. One could slip a dirt bike under it. Not sure how far one could go. Not an effective closure. Labeled closed on Proposed Action Map (PAM).

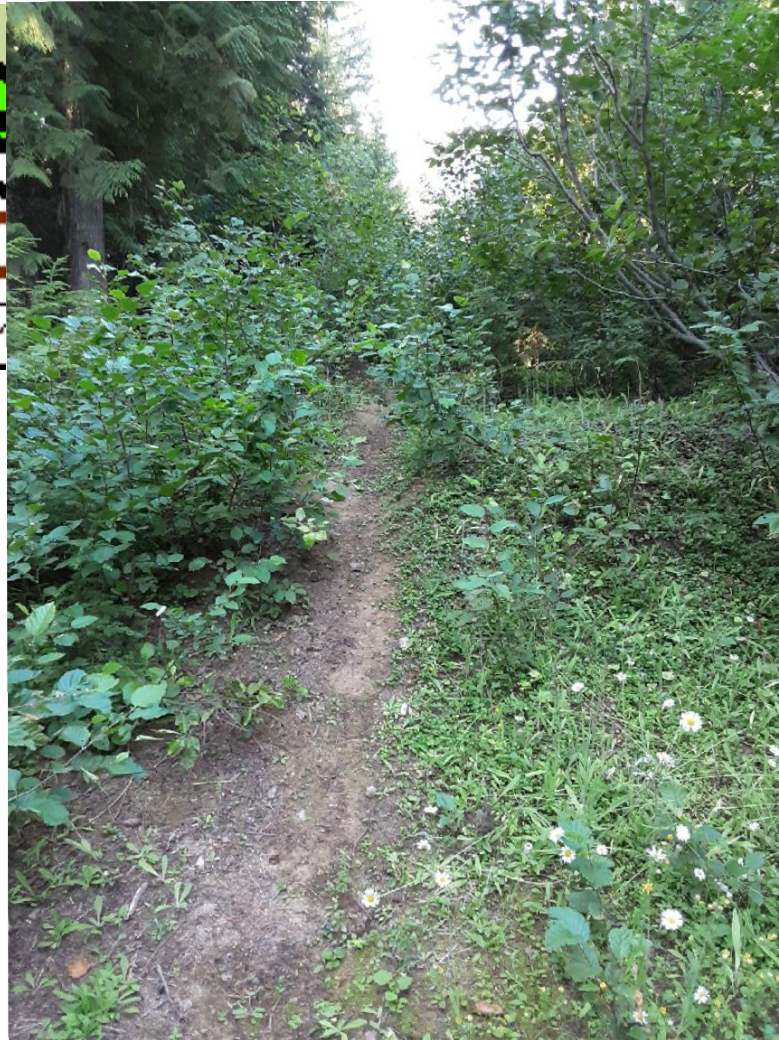
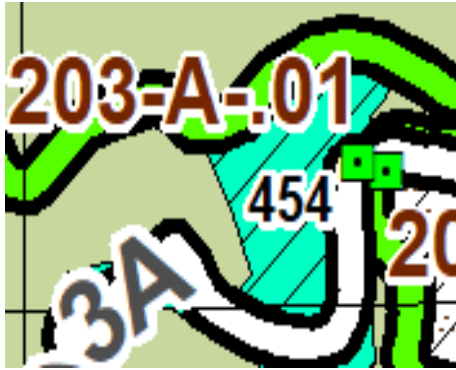


Road 203 at Switchback near Dry Creek.
Potential Old Growth needs to be field confirmed.



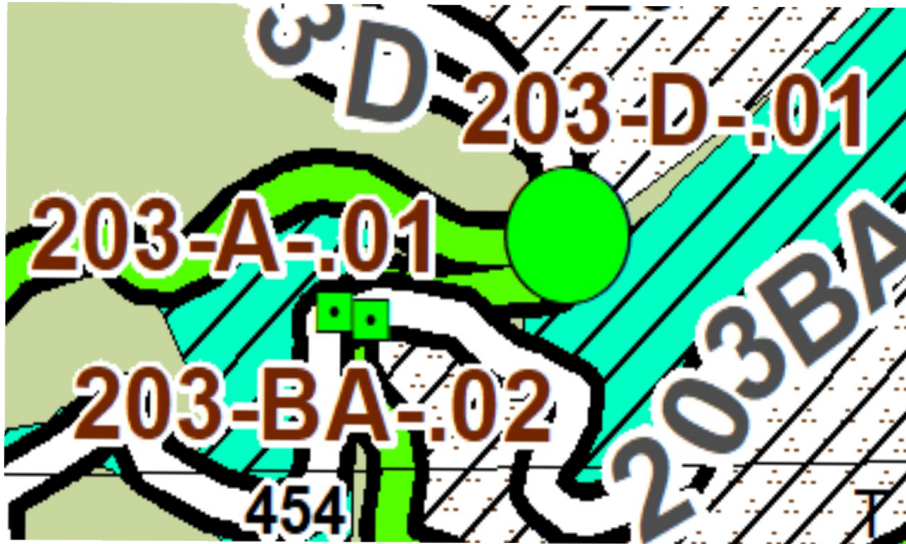
Jct. Rd. 203A x 203. G 203-A-01.

Dirt barrier, but accessible with dirt bikes. Not an effective closure.
Gate number might be juxtaposed with G 203-BA-02 adjacent to it.
Closed on PAM. Acronyms used in this survey: PAM = Proposed
Action Map. G = Gate or Barrier.



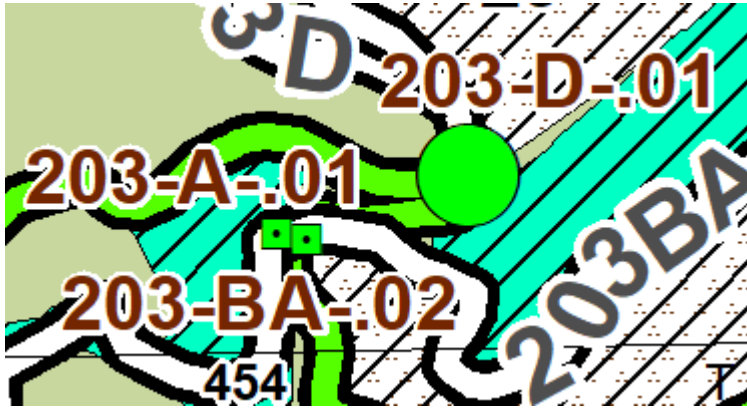
Road 203 BA x 203. G. 203-BA-02.

Closed by alder. Small hump also. Effectively closed by natural succession. Secure. Closed on PA Map.



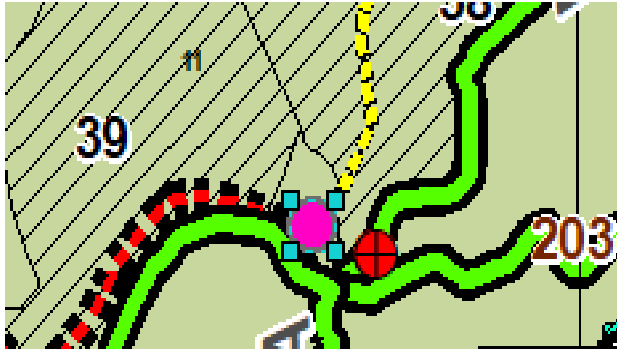
Road 203-D x 203. G 203-D-01.

Gate closed, locked, but dirt bike accessible on right. Road open past gate. Not secure. Closed on Proposed Action Map (PAM).



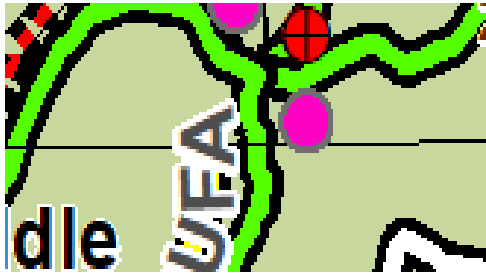
Trail 77 x 203.

Trail open to dirt bikes. No barrier limiting atv use. Must be counted as open for elk and grizzly bear security.



Unmapped Road x jct of Roads 203 and 332UFA.

Dirt barrier breached, driveable for at least 200 feet.



© 2020 Google
Image Landsat / Copernicus

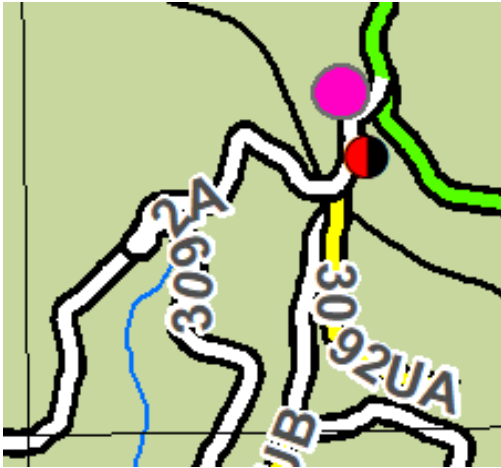
Road 332-UF x 332UFA.

Brushed in, Secure. Status undetermined on PAM.



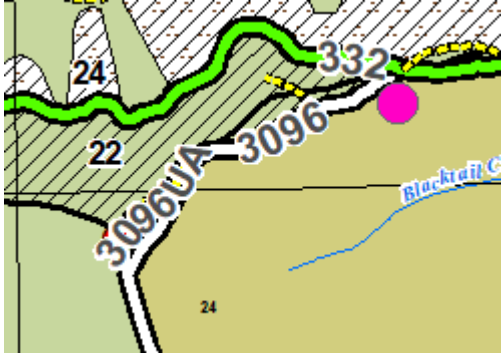
Roads 3092 A, B, UA road system.

Gated, breached, not secure. Closed on PAM.



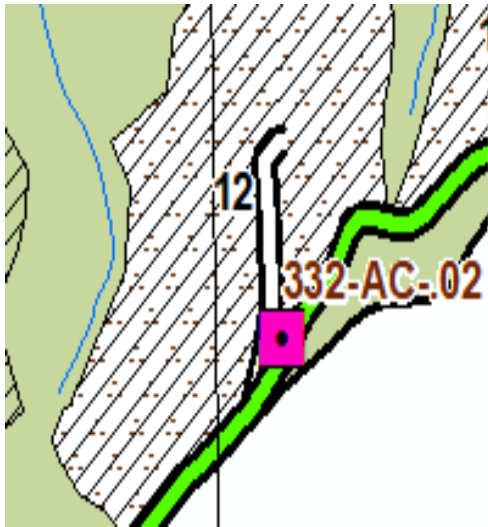
Road 3096-UA x 332.

Road Closed, trail past it, dirt bike accessible. Not secure. Closed on PAM.



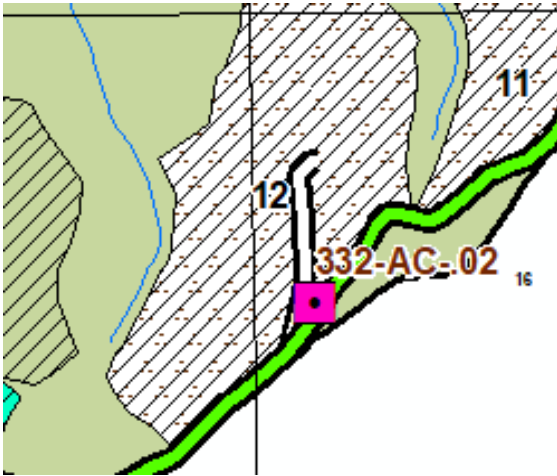
Spur on Rd. 332. G. 332-AC-02.

Spur barrier ineffective for dirt bikes, short road, +- 200 ft.
Closed on PAM.



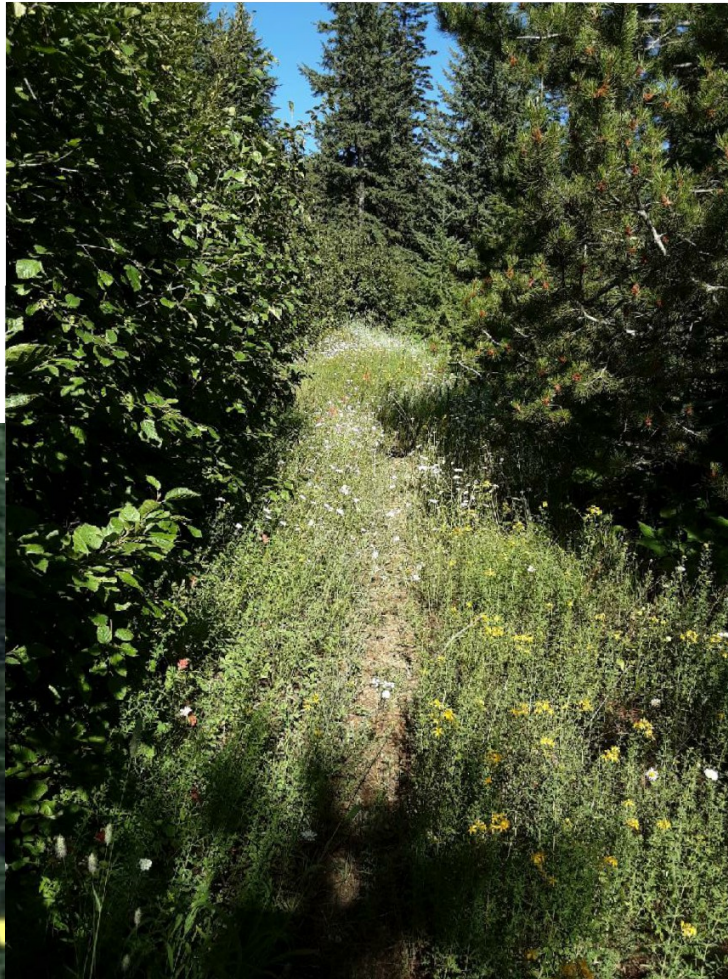
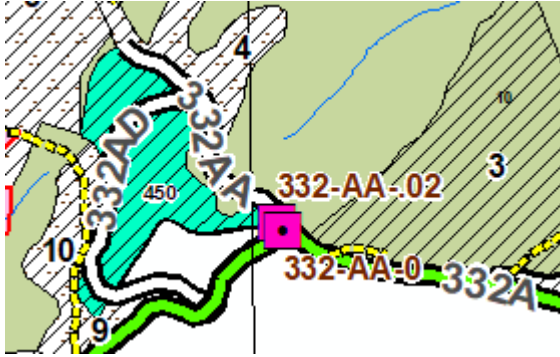
Road 332-AC-02 x 332.

Road Grown in; barriered, secure. Closed on PAM.



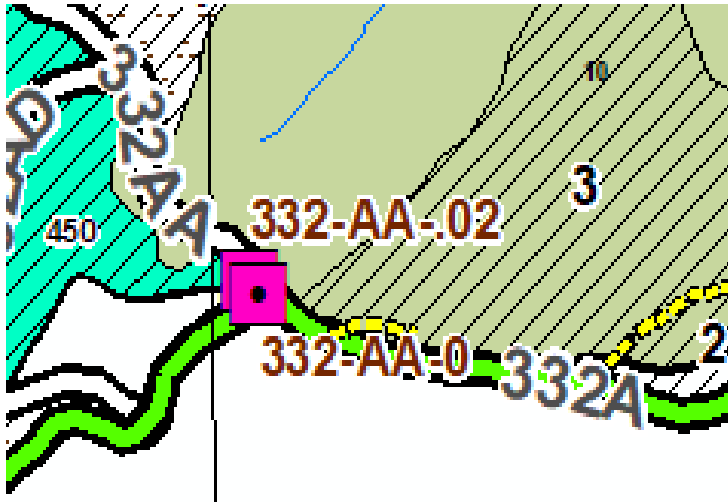
Road 332-AA x 332. Barrier 332-AA-0 or -02.

Not clear location on map. Located at higher pin on Google Earth Map below. Open, brushy but dirt bike accessible. Not secure. Closed on PAM.



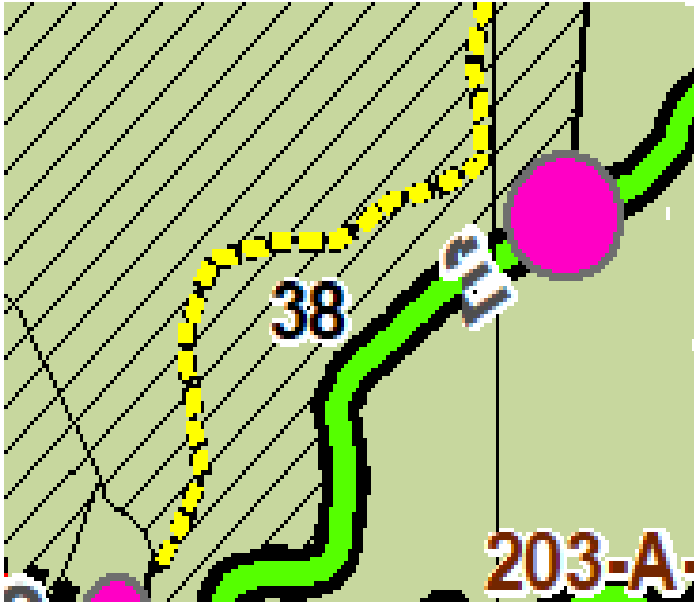
Road 332 x 332A. G. 332-AA-0.

Lower pin on Google Earth Map below. Open, no barrier, open on PAM.



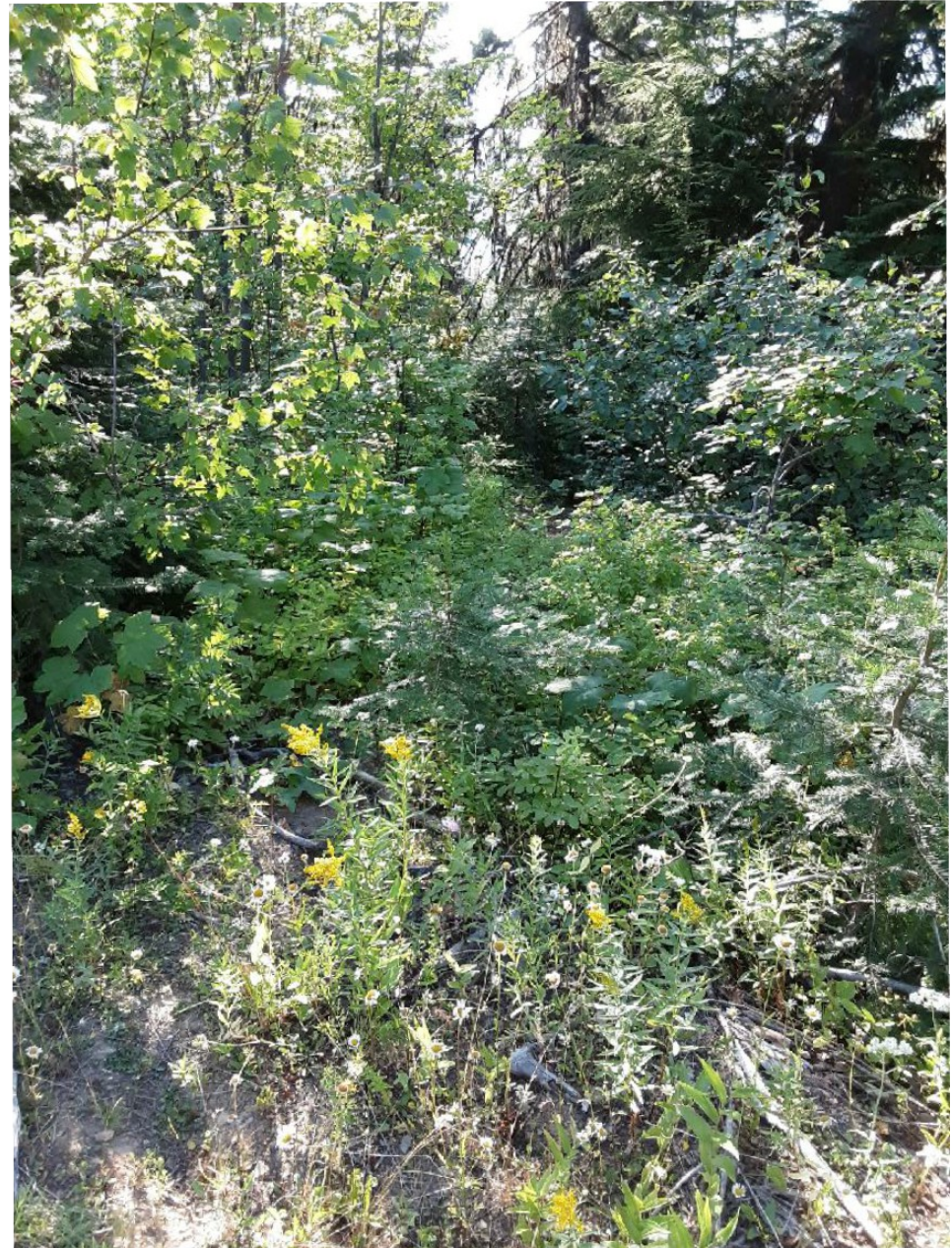
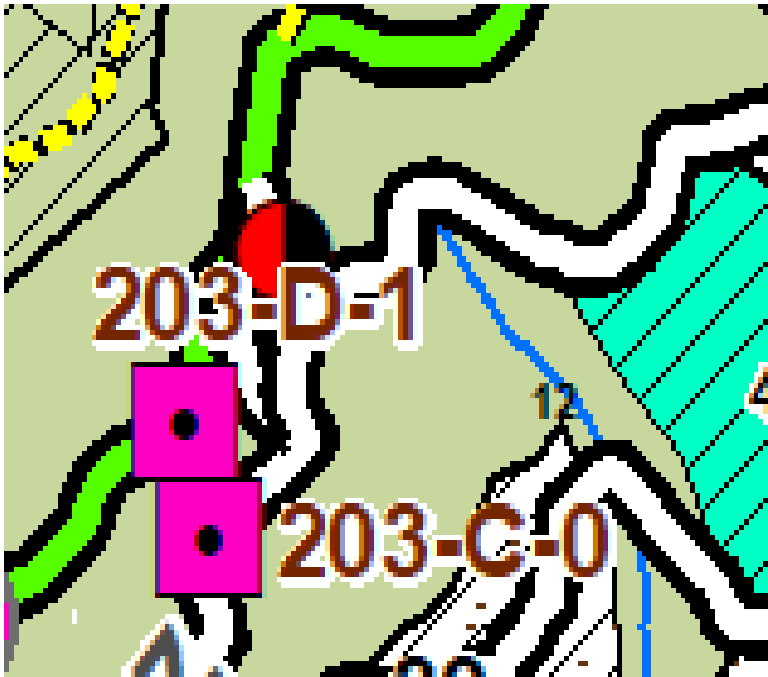
Unmapped Spur x Road 203E.

Atv, dirt bike accessible, no barrier, length unknown.



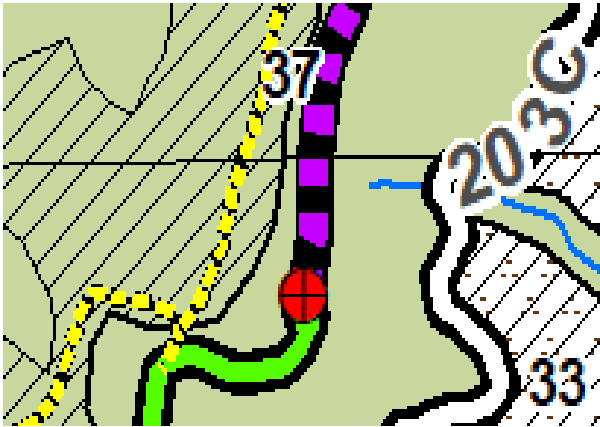
Roads 203C&D. G. 203-D-1.

Grown in, game trail present, secure, no barrier seen.
Closed on PAM.



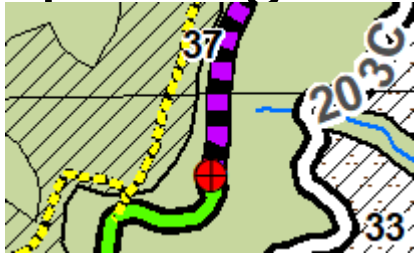
Trail 122 x Rd. 203E.

Motorcycle trail, not barriered to stop atv use. Must be noted as open for elk security habitat and grizzly bears. Campsite is on old spur road to the west.



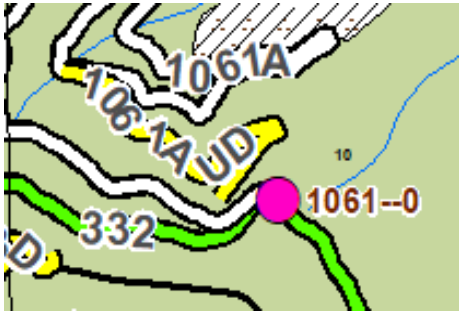
Unmapped Spur road x jct of Rd 203E and Trail 122.

Accesses campsite, about 250 feet on west side of parking lot.



Road 1061 x 332. G. 1061-0.

Road brushed in, gate destroyed. Secure. Closed on PAM.



Road 901 x 332.

Road open, no barrier. Not secure. Shown as closed on PAM.



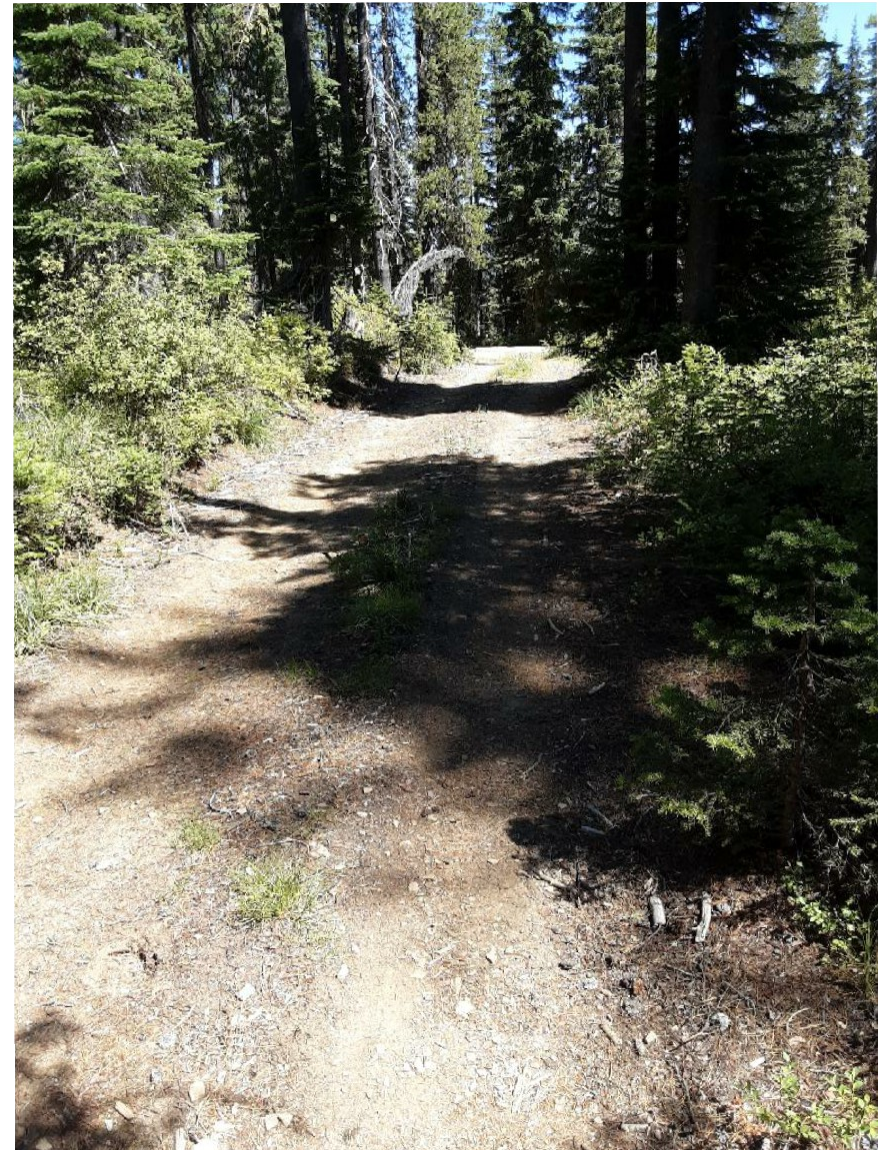
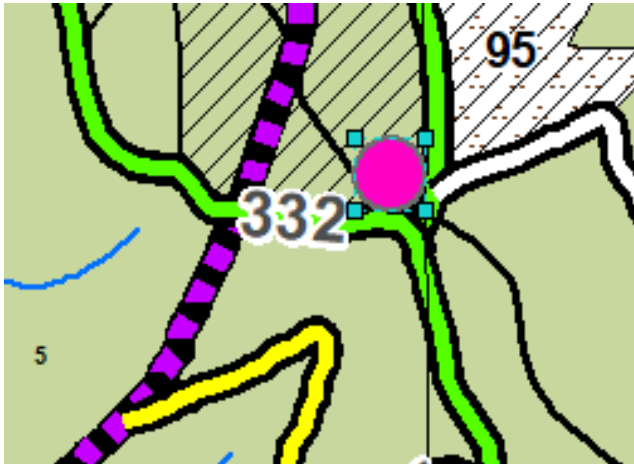
Spur, north side of Jct 332 and 901.

Open, goes to helispot. Not secure. Not mapped.



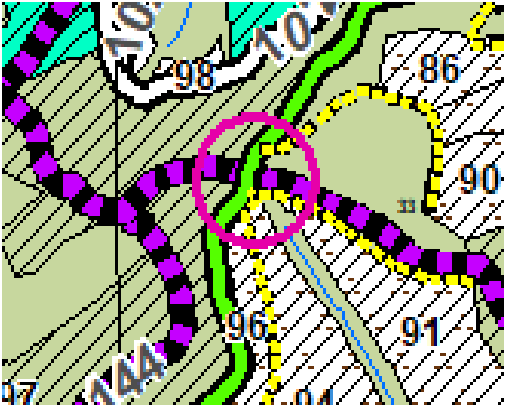
Unmapped cutoff road at jct of 332 and 102.1.

Open, not secure. Not mapped on PAM.



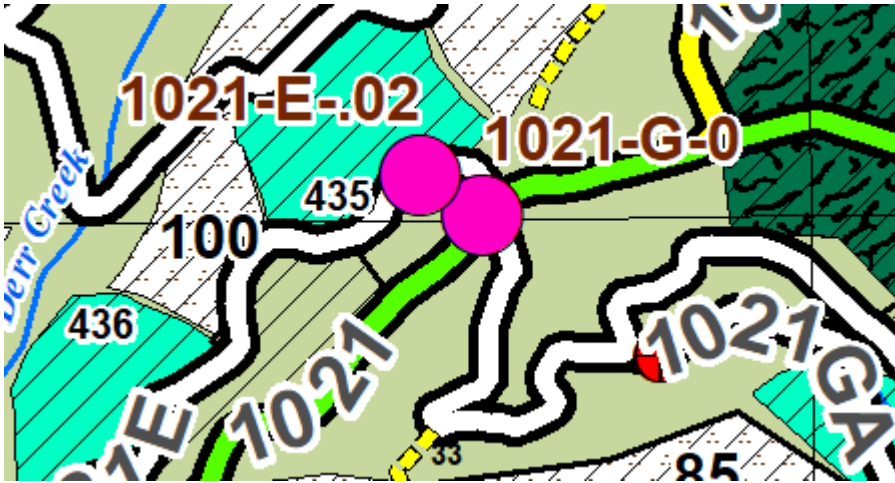
Trail 75 x Rd. 1021.

Designated motorcycle trail. Not secure and should not be counted as closed for elk or grizzly security habitat.



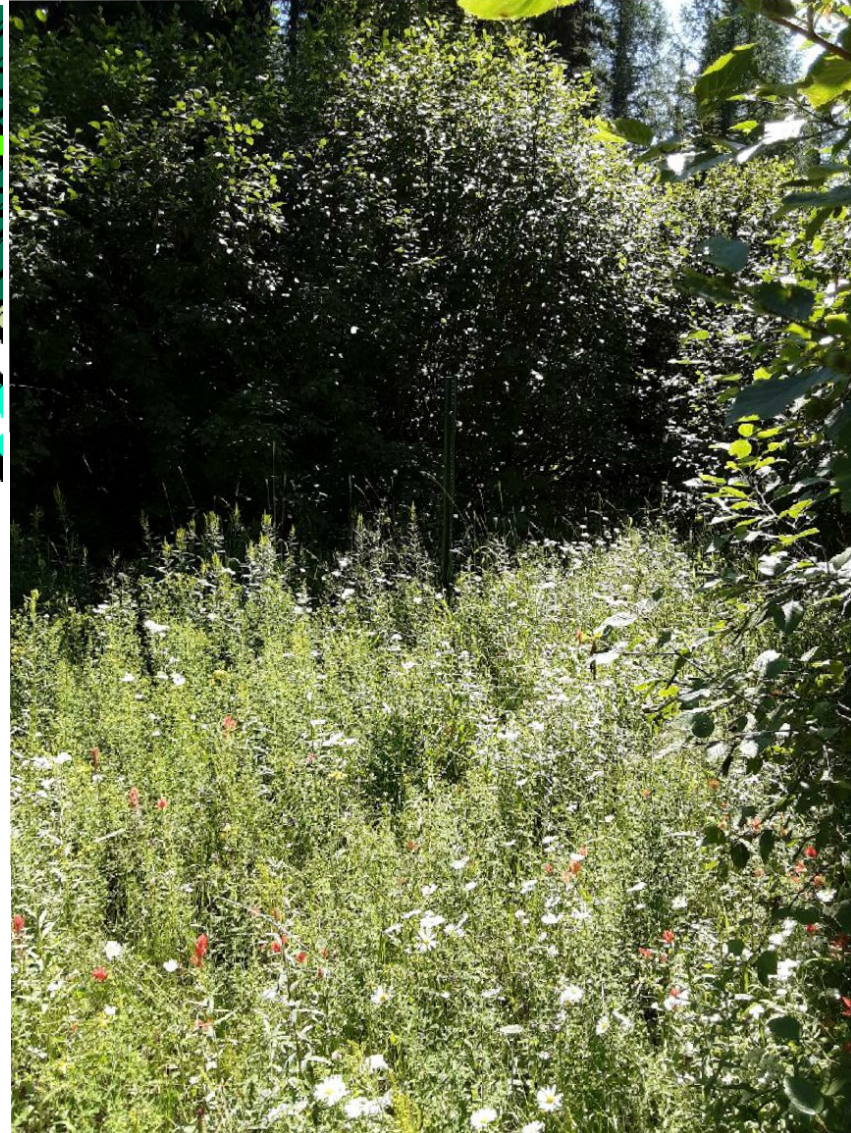
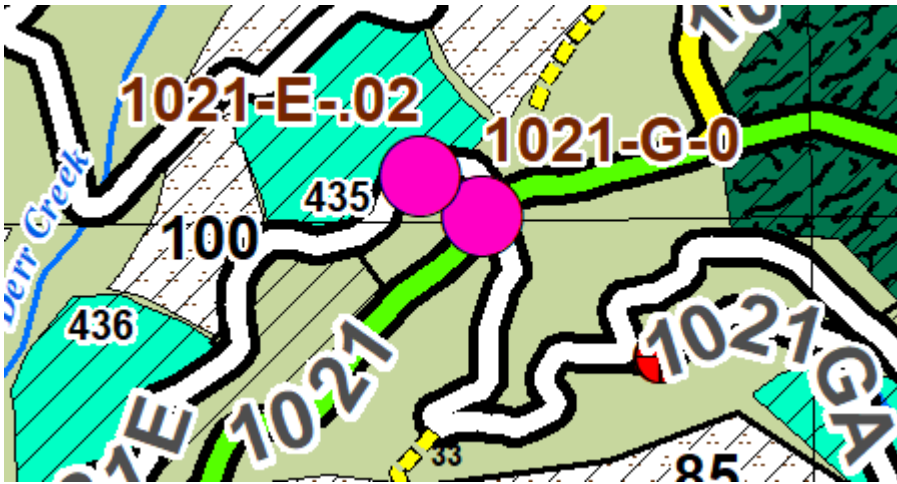
Road 1021E x 1021. G 1021-G-0.

Gate wrecked, closed by alder. Secure. Closed on PAM.



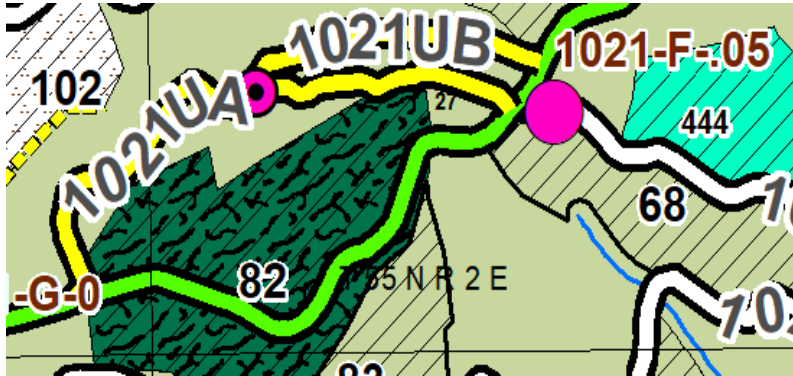
Rd. 1021GA x 1021. G. 1021-G-0.

Road closed by alder. No barrier or gate seen withing 100' of main road. Secure. Closed on PAM.



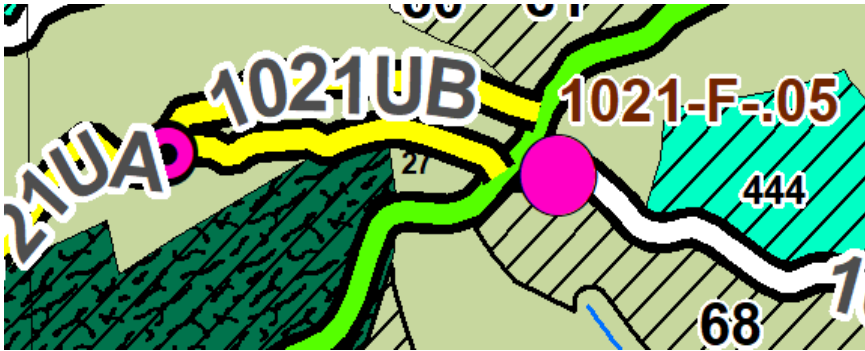
Road 1021F x 1021. G. 1021-F-05.

Gate, no lock, accessible to all, not secure. Closed on PAM.



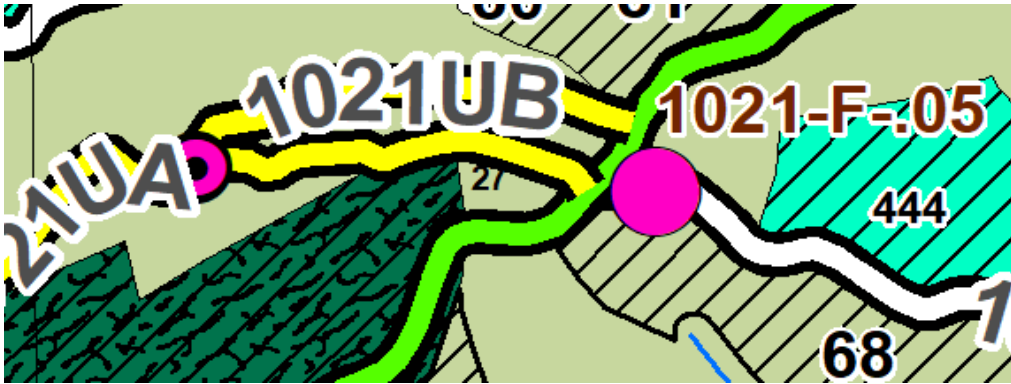
Road 1021 UA (UB?) x 1021.

Road brushed in, secure closed, did not walk in to gate location. Status undetermined on PAM.



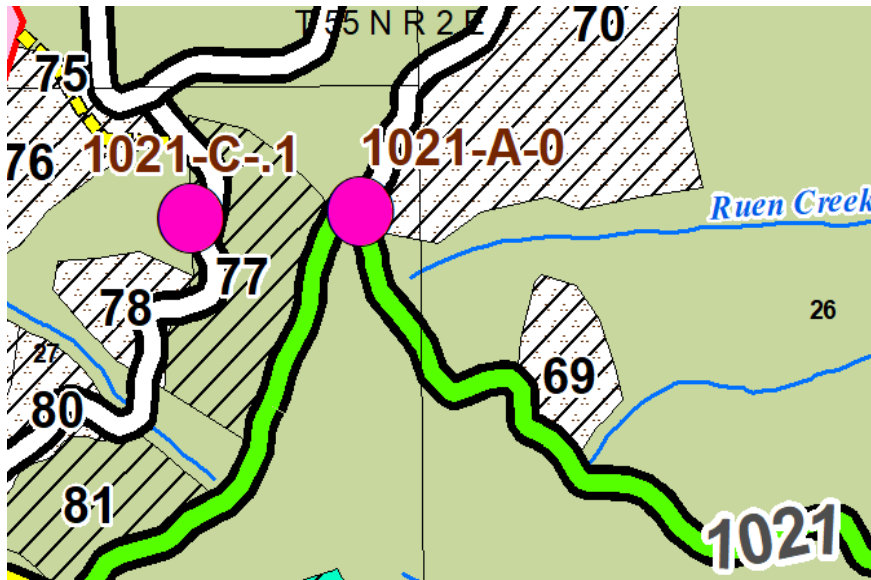
Road 1021-F x 1021. G. 1021-F-05.

Gate has no lock, accessible, can be circumvented by dirt bike, not secure. Closed on PAM.



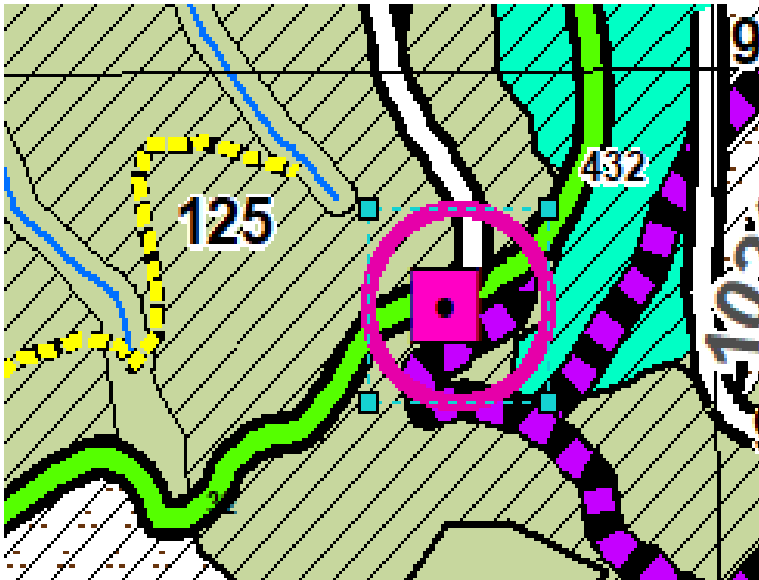
Road 1021A x 1021. G. 1021-A-0.

Gate closed, no lock. Road functionally closed by brush.
Secure. Closed on PAM.



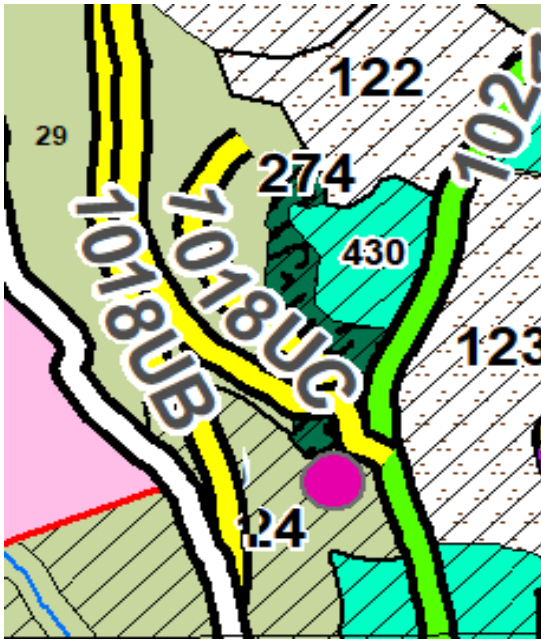
Road 1018 x 1024.

Closed, no photo. Secure. Closed on PAM.



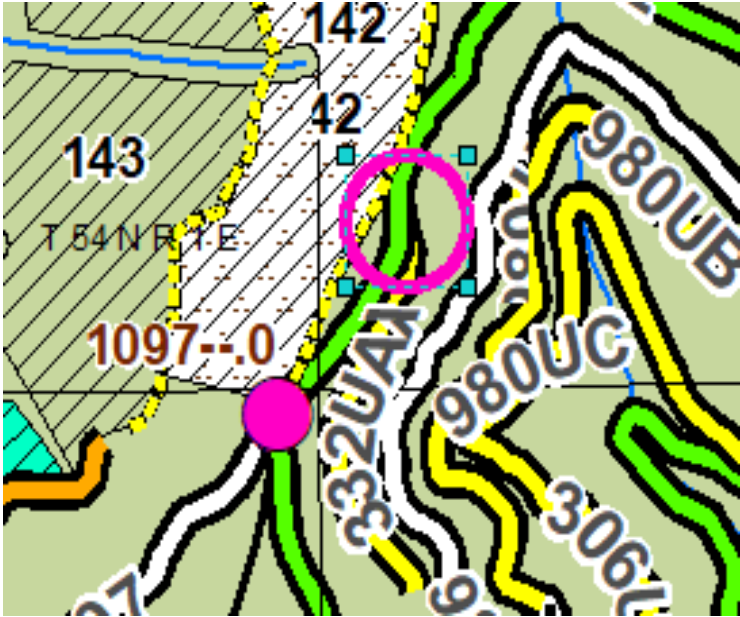
Road 1018UC & unmapped road x 1024.

Road open at interior junction, not secure. Status undetermined (yellow-green roads) on PAM.



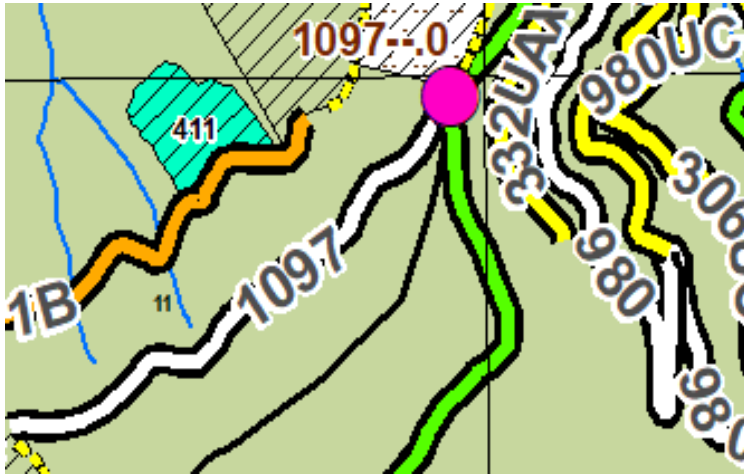
Road 332UAA x 332.

Road Closed by brush. Secure. Status undermined on PAM. Three dirt bikes passed on rd 332.



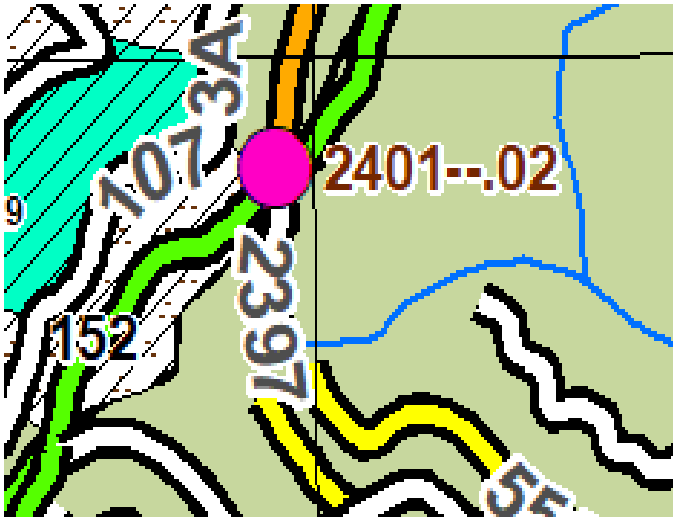
Road 1097 x 332. G. 1097-0.

Road open, gate wrecked. Not secure. Closed on PAM.



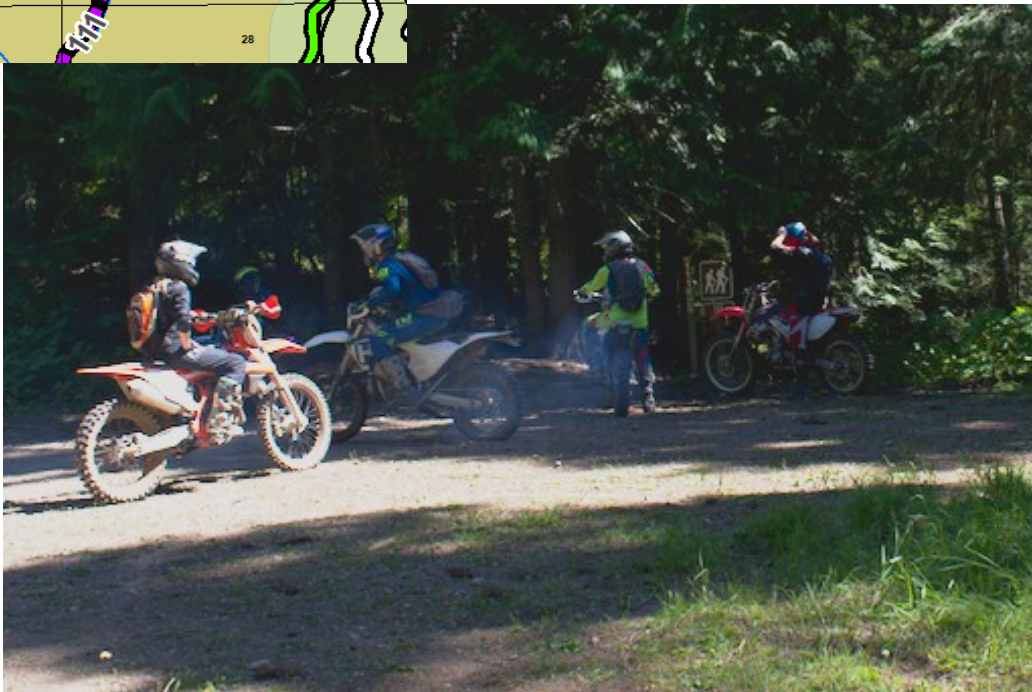
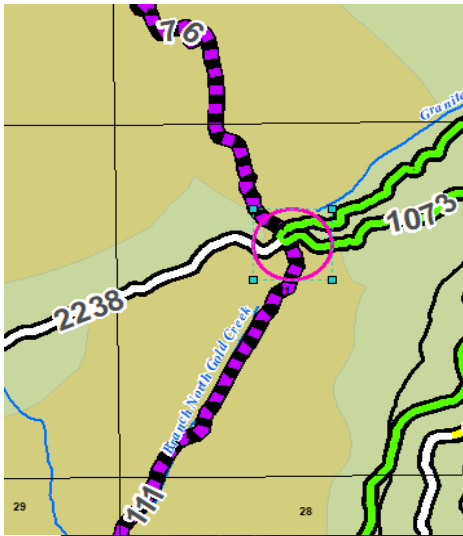
Road 2401 x 332. G 2401-02.

Road open, gate wrecked. Not secure. Status Seasonal on PAM.



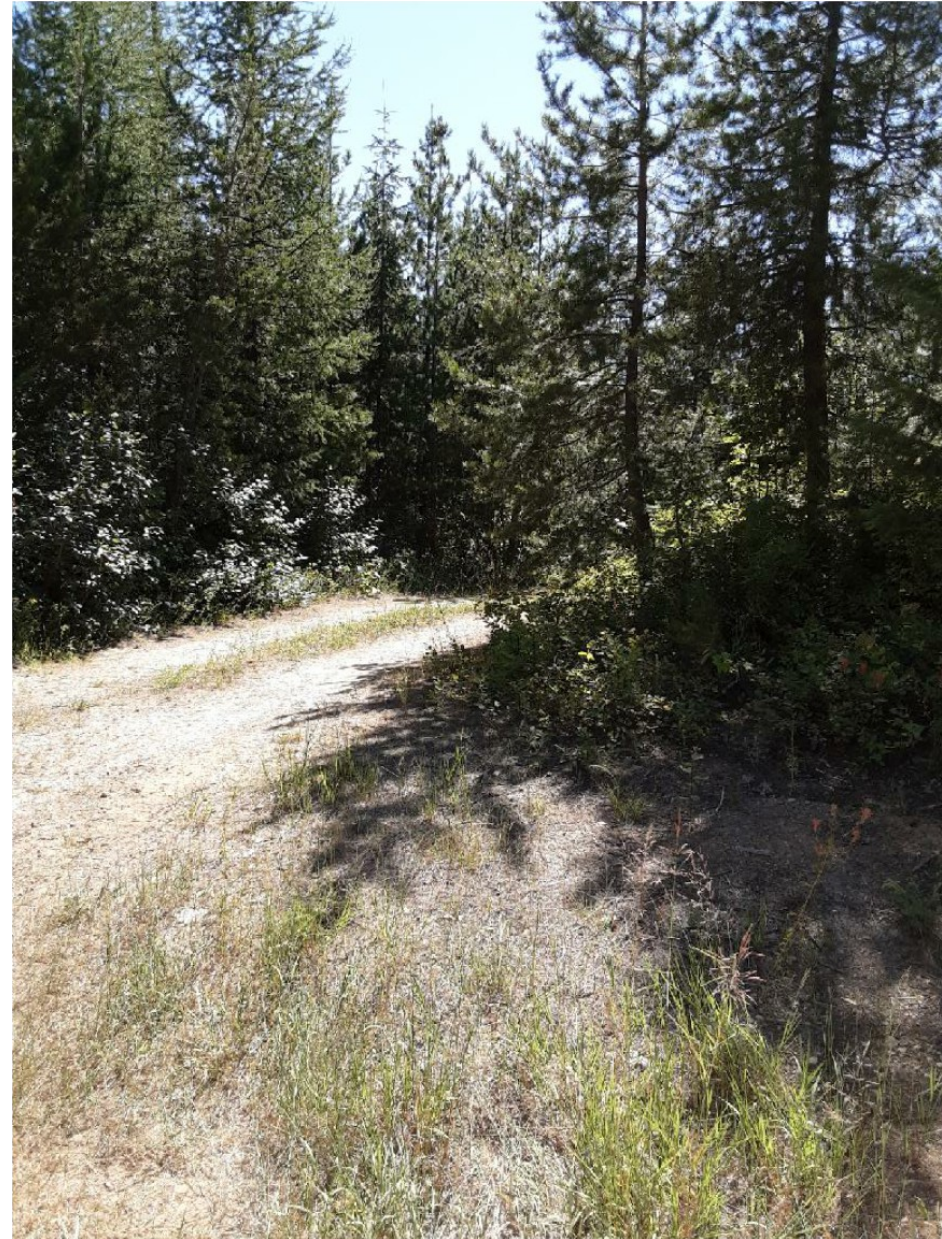
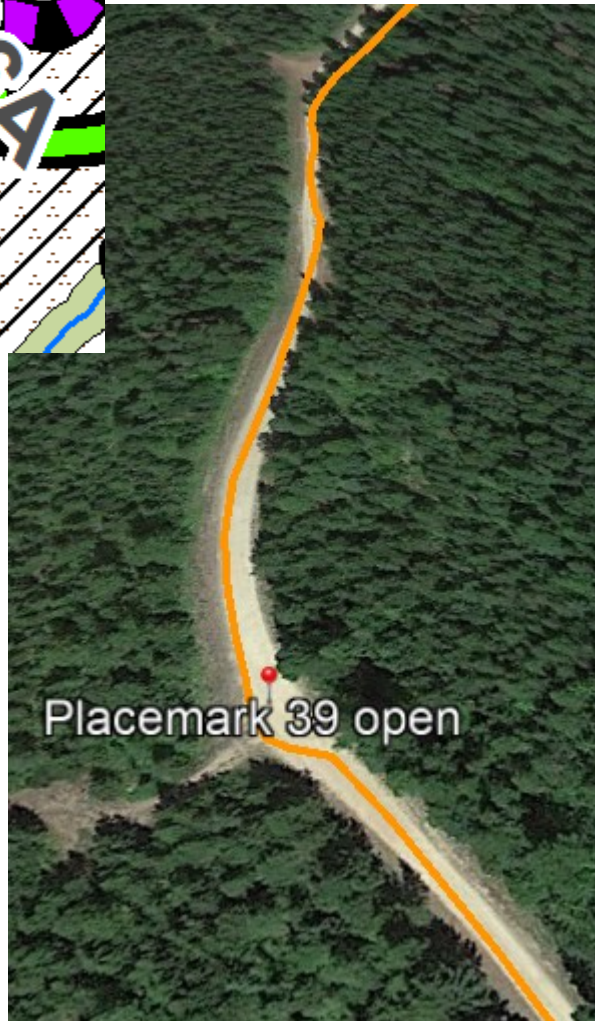
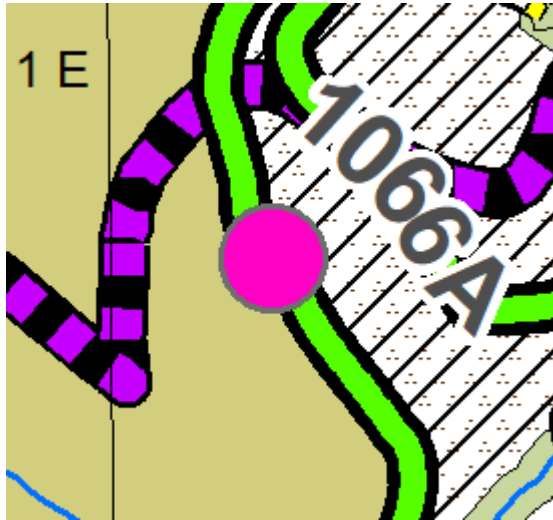
Trail 111 x Road 1073, 2238. Trail 16.

Trail 111 multiple use, open. 4 mountain bikers and dirt bikes photographed below at junction.

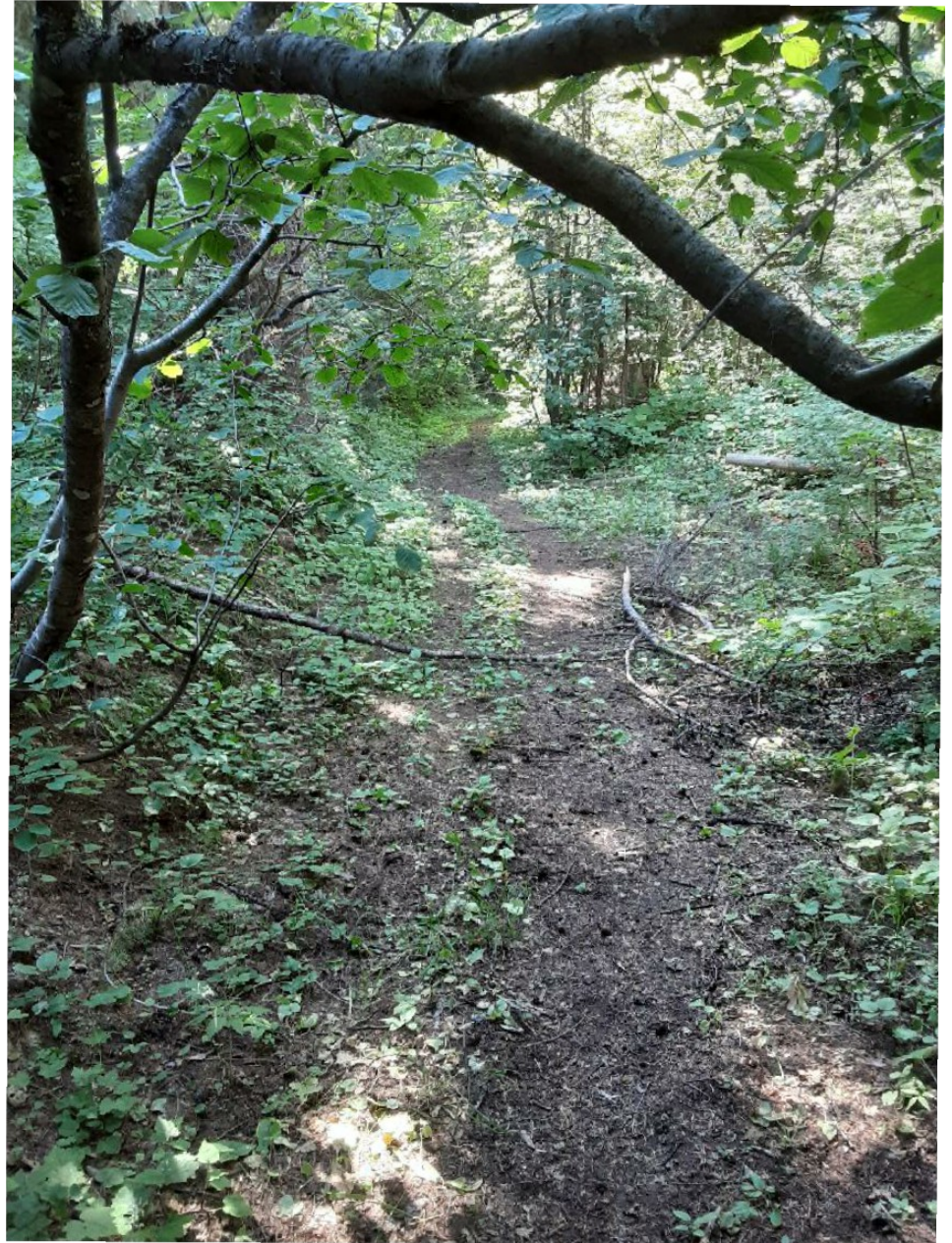
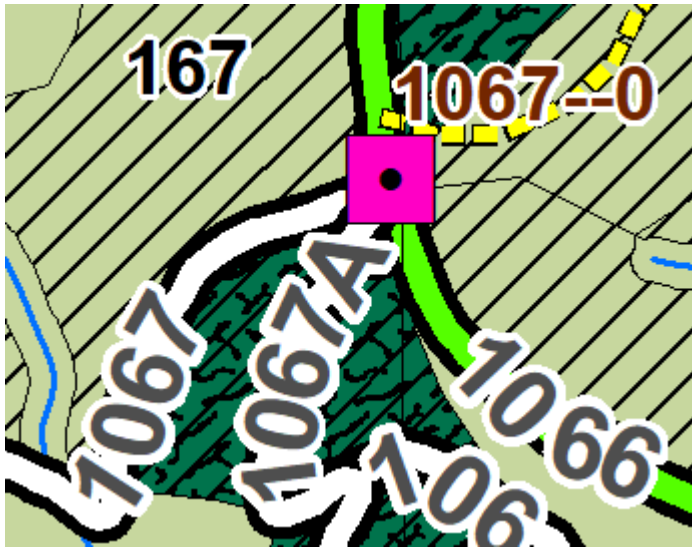


Unmapped Road x 1066.

Road is open for unknown distance. Not on PAM.

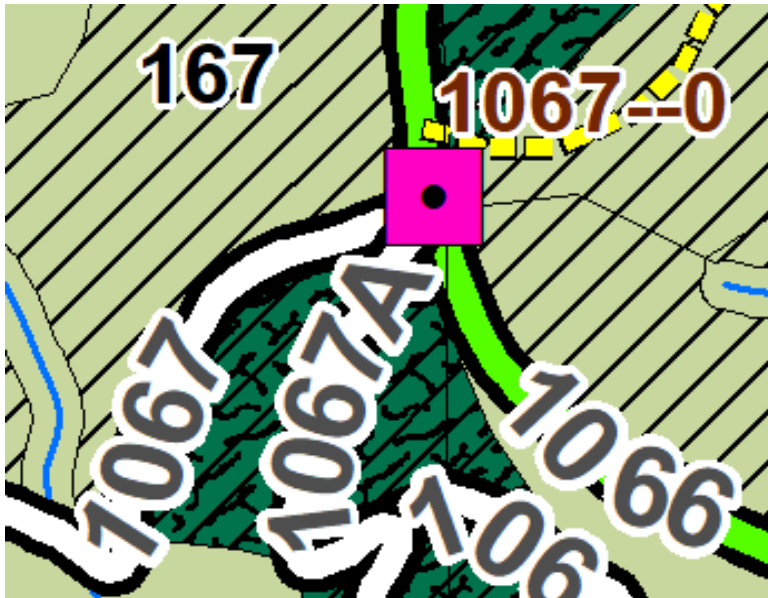


Road 1067 x 1066. G. 1067-0. Road open. Not secure. No barrier seen. Closed on PAM.



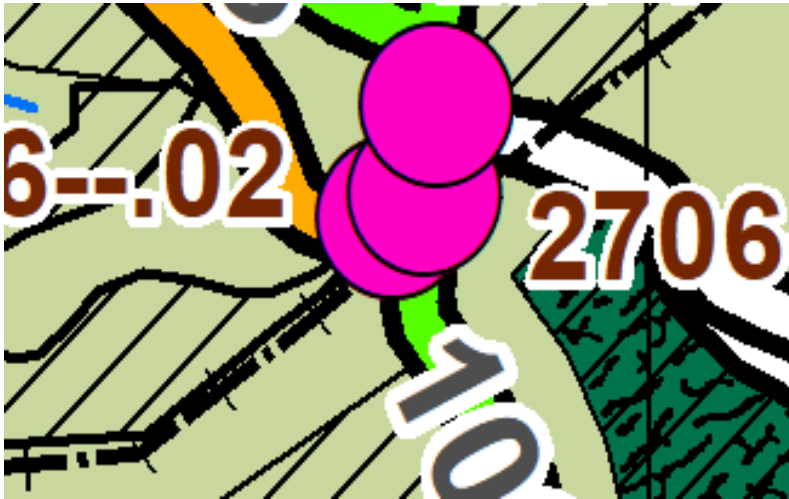
Road 1067A x 1066.

Road brushed in. Secure. Closed on PAM.



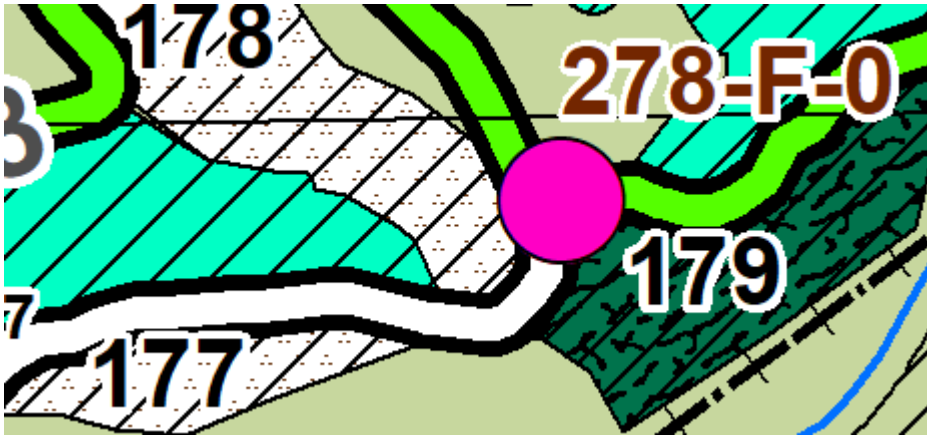
Power Transmission Access Road x 1066.

Open. Not mapped on PAM.



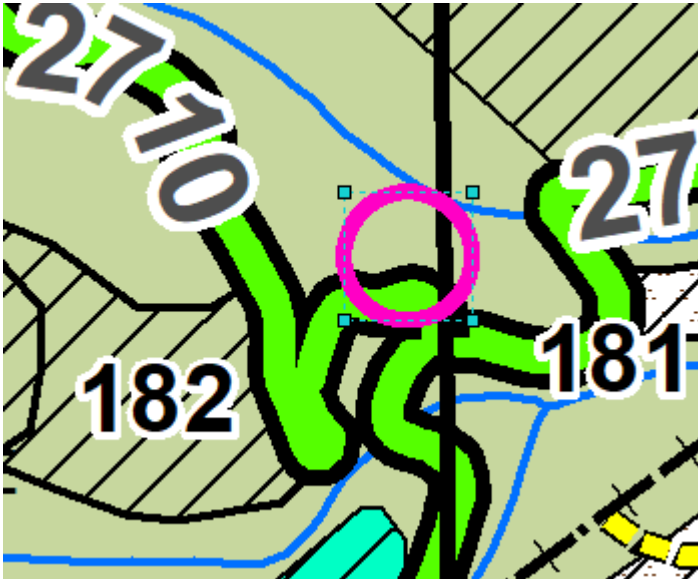
Road 278F x 278. G. 278-F-0.

Handicapped hunting access. Gate not locked, access around gate on left. Not secure. Closed on PAM.



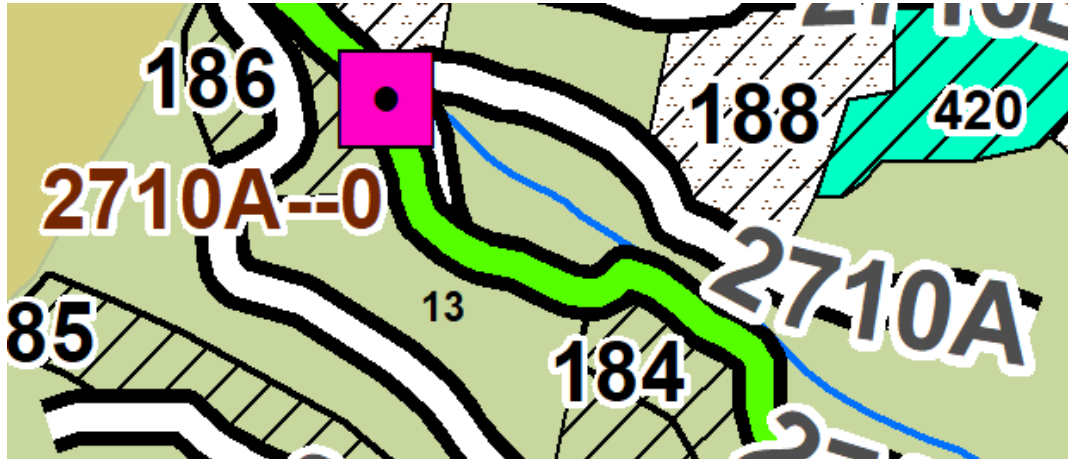
Unmapped Spur to Campsite x 2170.

Short spur to campsite. Not on PAM.



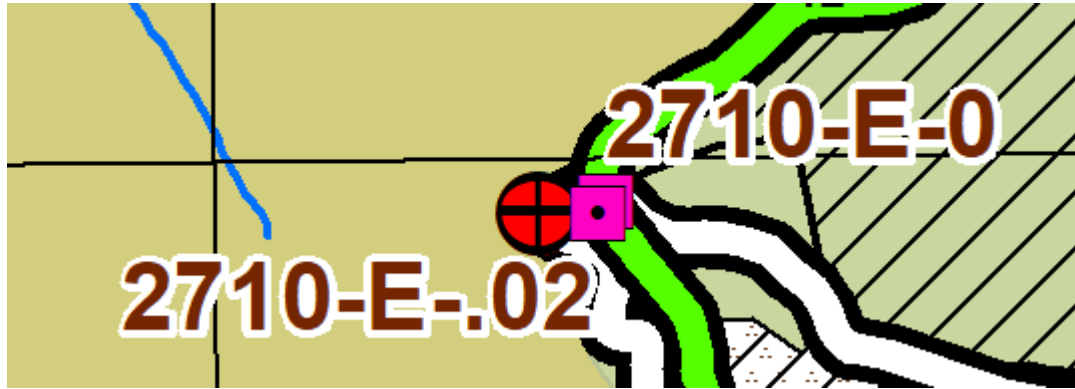
Road 2710A x 2710. G. 2710-0.

Road closed by alder. Secure. No barrier found. Closed on PAM.



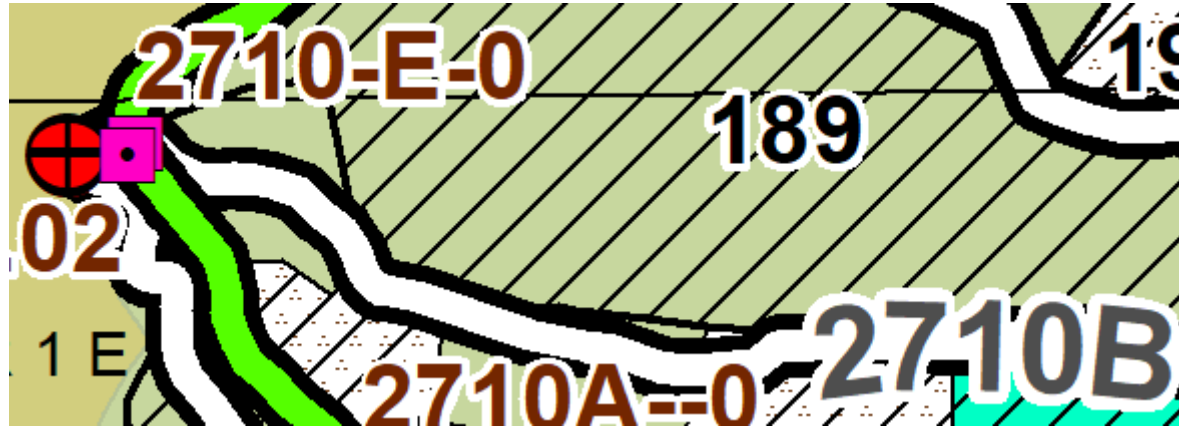
Road 2710E x 2710. G. 2710-E-02.

Road at end of orange track closed by alder. Secure.
Closed on PAM.



Road 2710B x 2710. B 2719-E-0.

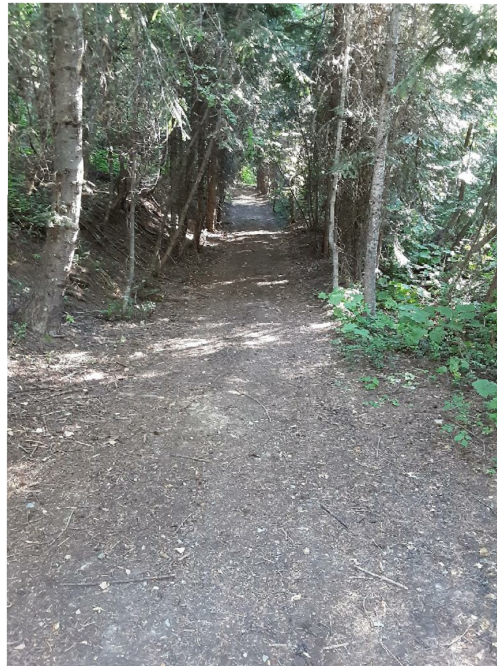
Closed by alder. No barrier seen near road. Closed on PAM.



Road 2710B x 2710 North end. G.

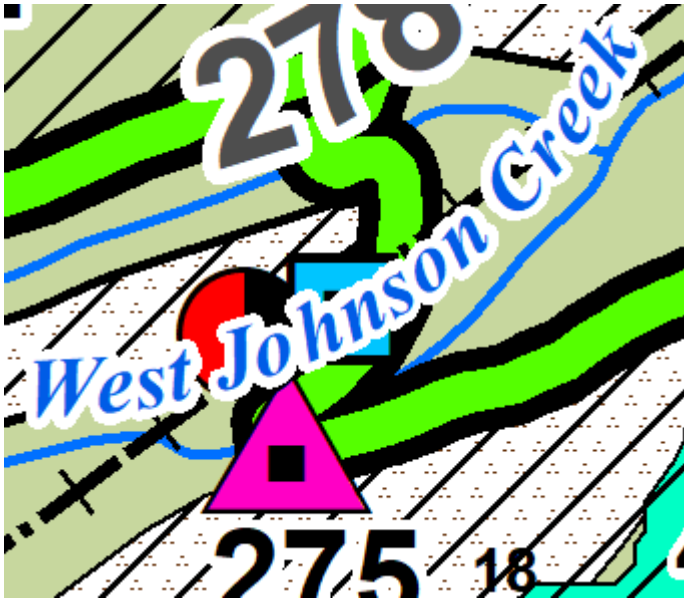
2710-B-02.

Road closed with concrete barrier and alder (right photo). Secure. Closed on PAM. Motorized trail open (left photo), Shown as a “Road Opportunity” on PAM. Not Secure. Should be counted as open for elk and grizzly security habitat.



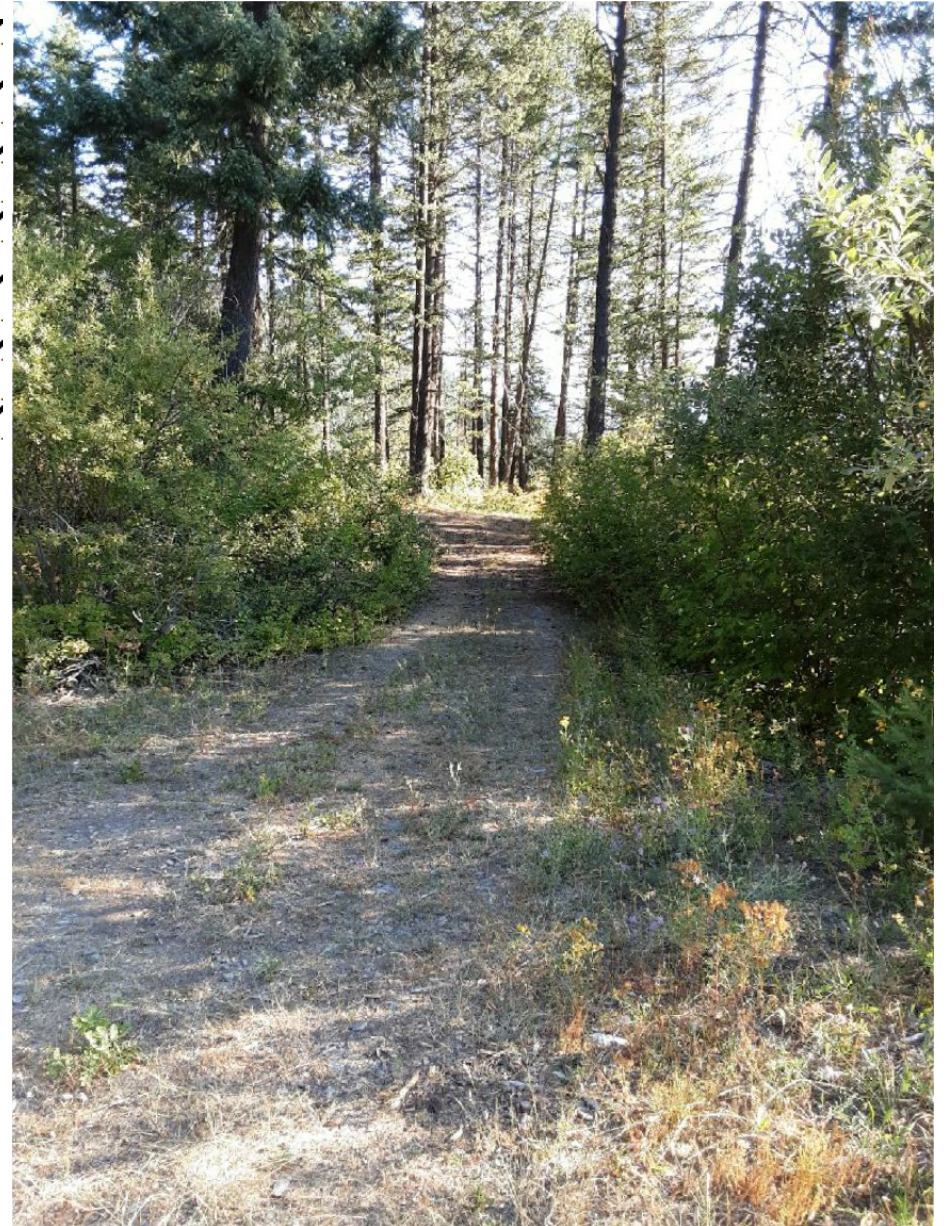
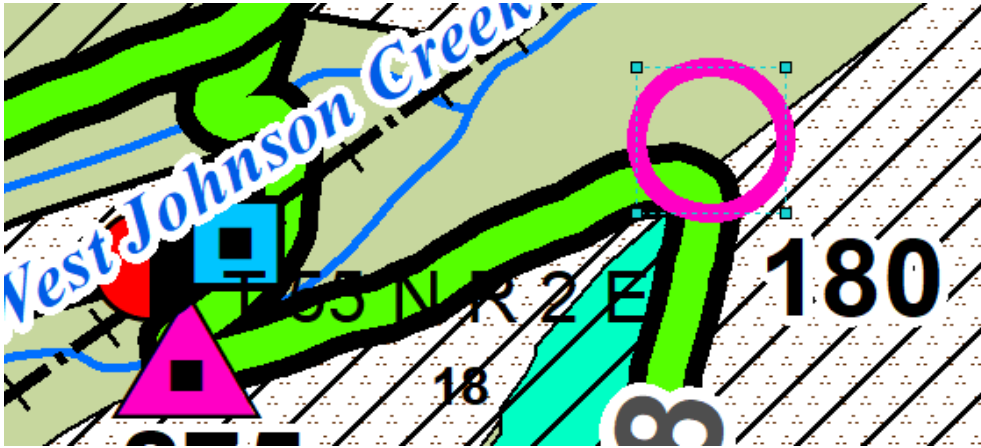
Road 1018.

Gate on road busted open. Road open on PAM.



Unmapped spur to campsite x 1018.

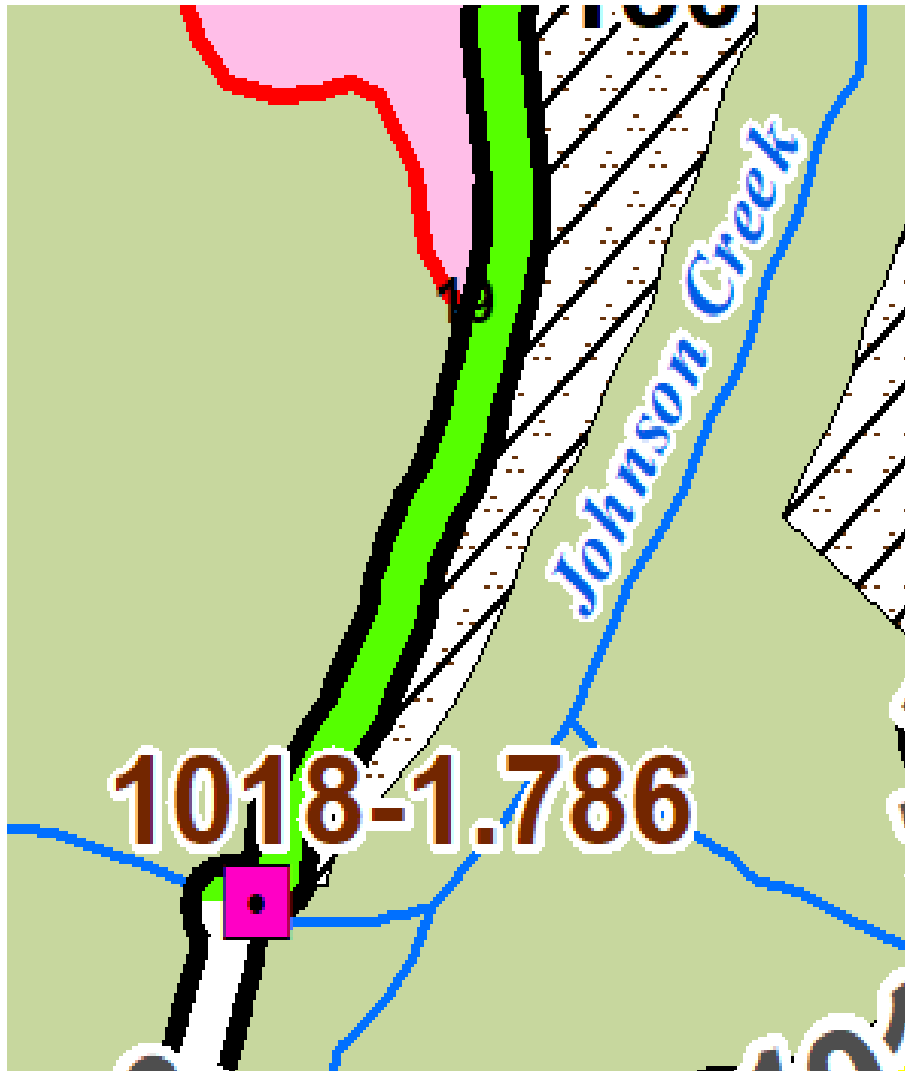
Short spur to campsite. Not mapped on PAM.



Trail 606 x 1018. G. 1018-1.786.

Start of dirt bike trail and road. Trail portion of road open to motorized use. Not Secure. Closed on PAM.

Much sedimentation from the trail where it crosses a perennial tributary of Johnson Creek (next page).



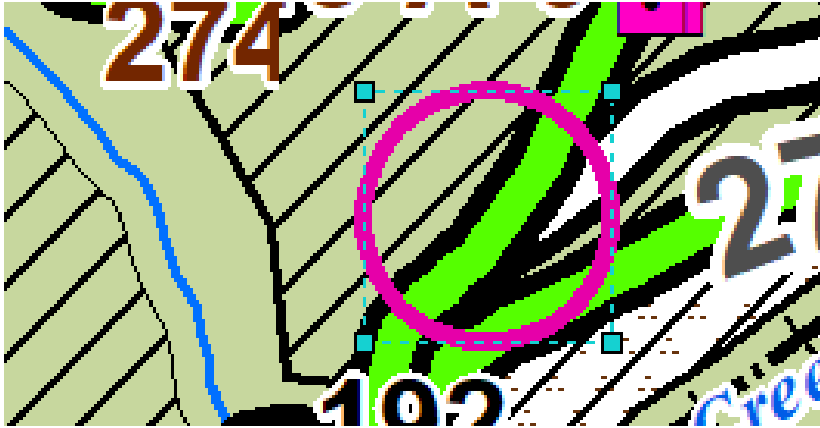
Trail 606.

Documentation of erosion and possible old slide in Google Earth photo and in photo from previous slide.



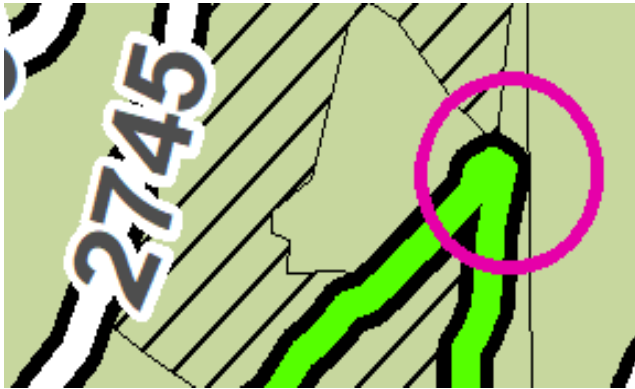
Unlabeled Road x 2745.

Concrete barrier and brush. Secure. Closed on PAM.



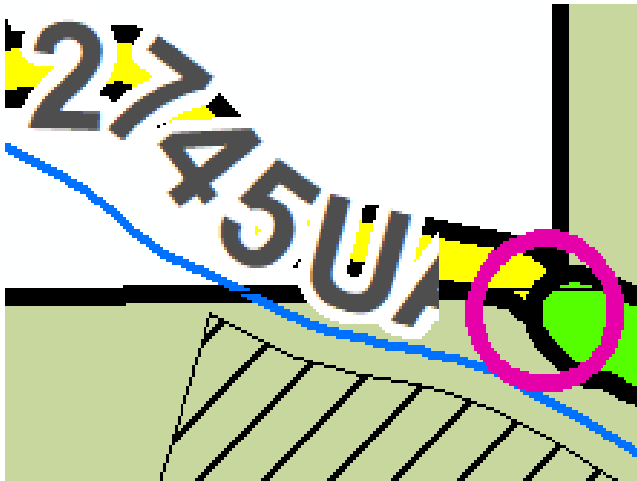
Unmapped Spur Road x 2745.

Spur grown in by brush. Secure. Not mapped on PAM.



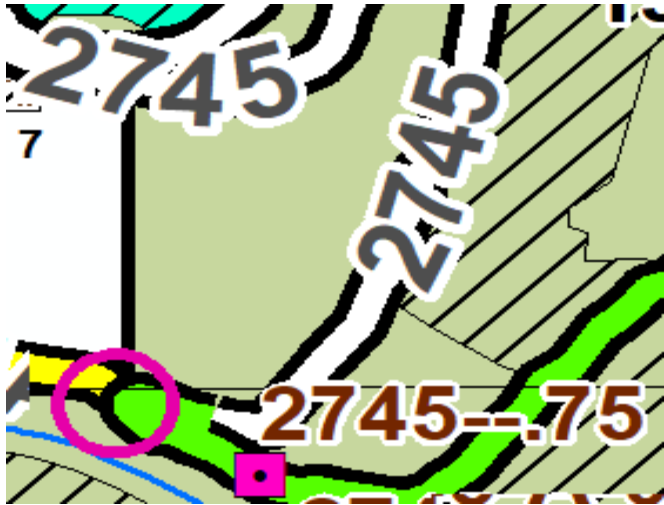
2745UA x 2745. Privately installed gate.

Not secure without documented use level agreement.
Undetermined status on PAM.



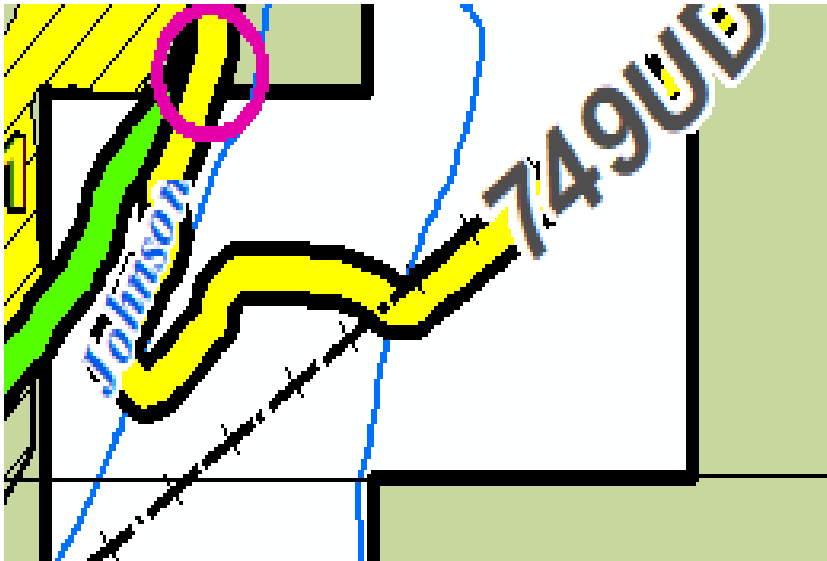
Road 2745 at barrier. G 2745-.75.

Concrete barrier pushed over, dirt bike accessible. Open to at least to placemark 53, upper right corner of Google Earth photo. Not secure. Closed on PAM.



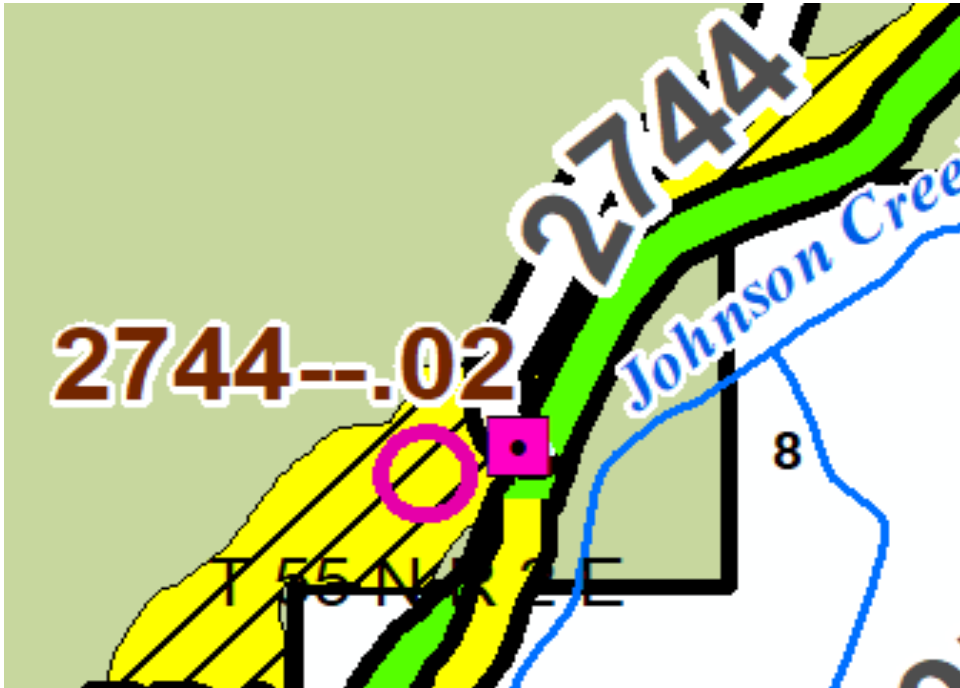
Road 749UD x 278. Private gate.

Not secure without use agreement by private owner. Status undetermined on PAM.



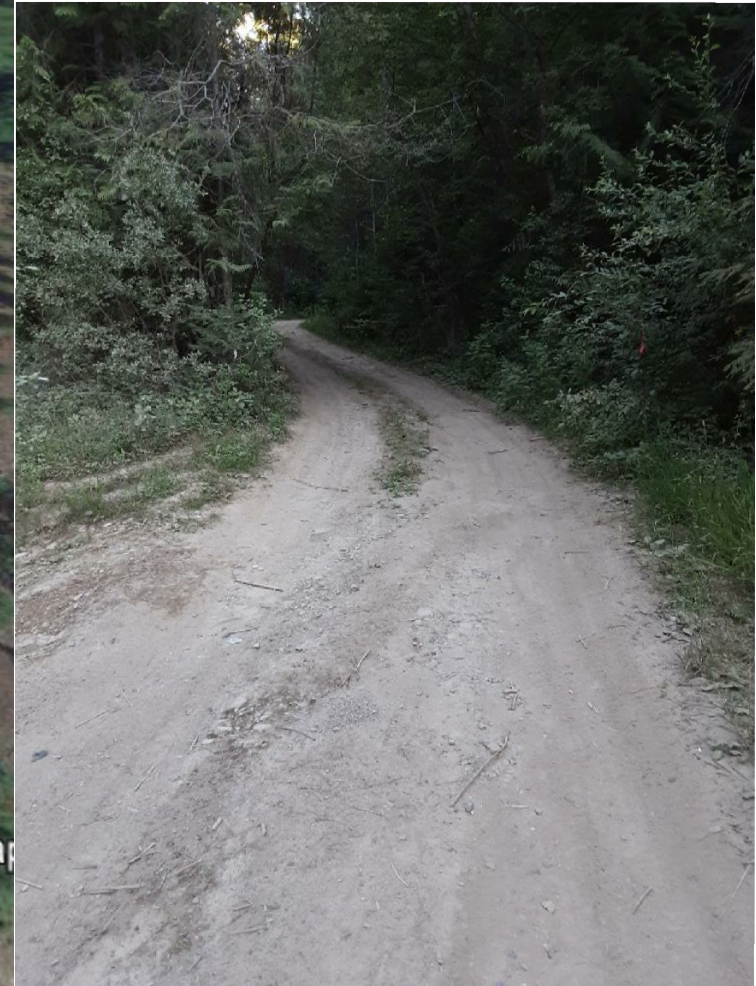
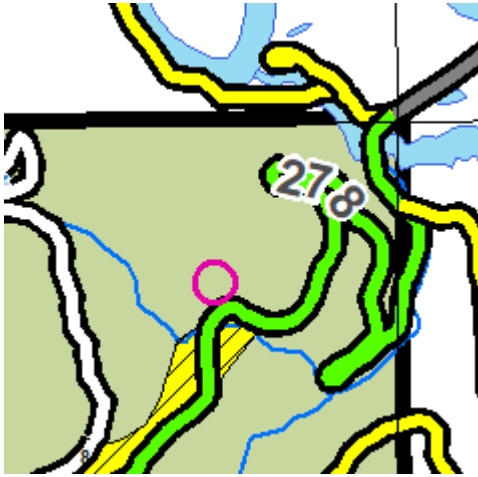
Road 2744 x 278. G 2744-02.

There is a junction with an unmapped road heading south (magenta circle). Both roads open and not secure. Closed on PAM.



Unmapped Road x 278.

Road open for undetermined distance. Not Secure. Not on PAM.
Camper on top of hill, did not go up road and disturb. (see next slide.)



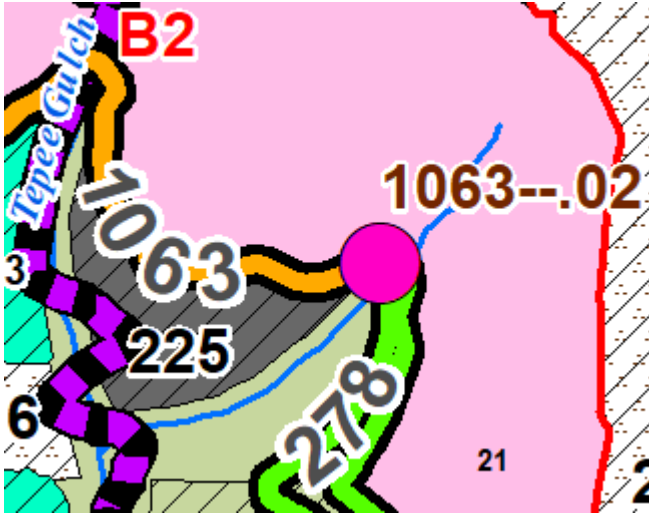
User created ATV trail x 278.

This trail goes uphill to the camper parked on unmapped road in previous slide. Not secure. Not mapped on PAM. GPS path is not entire road length.



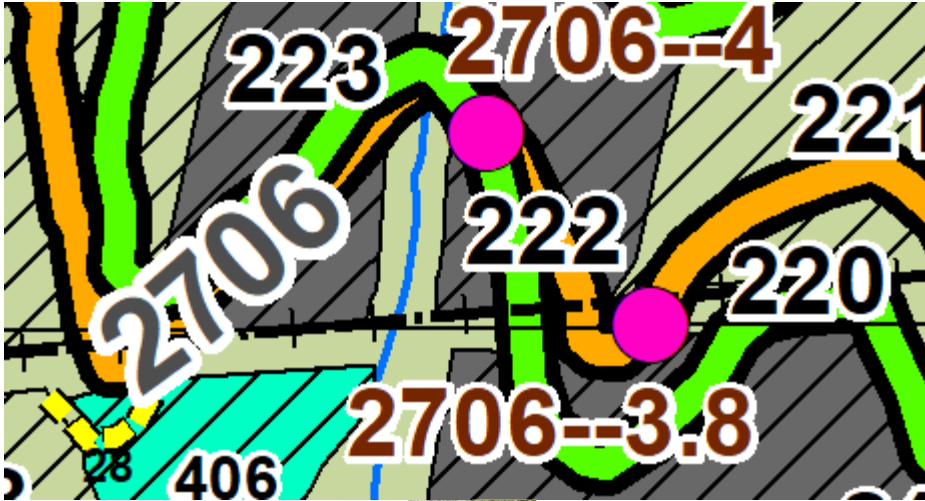
Road 1063 x 278. G. 1063-0.02.

Road open, gate open, locked. Seasonally restricted on PAM.



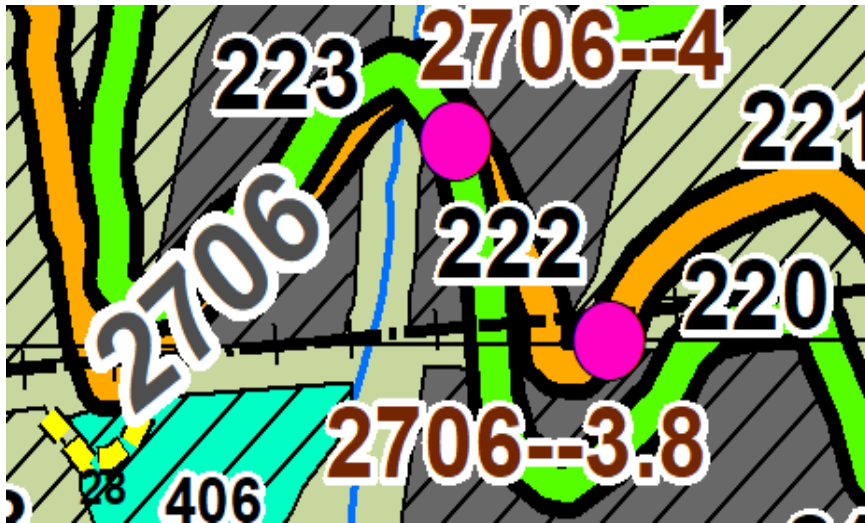
Road 2706 x 278. G. 2706-4.

Road gated, locked open. Seasonally Restricted on PAM.



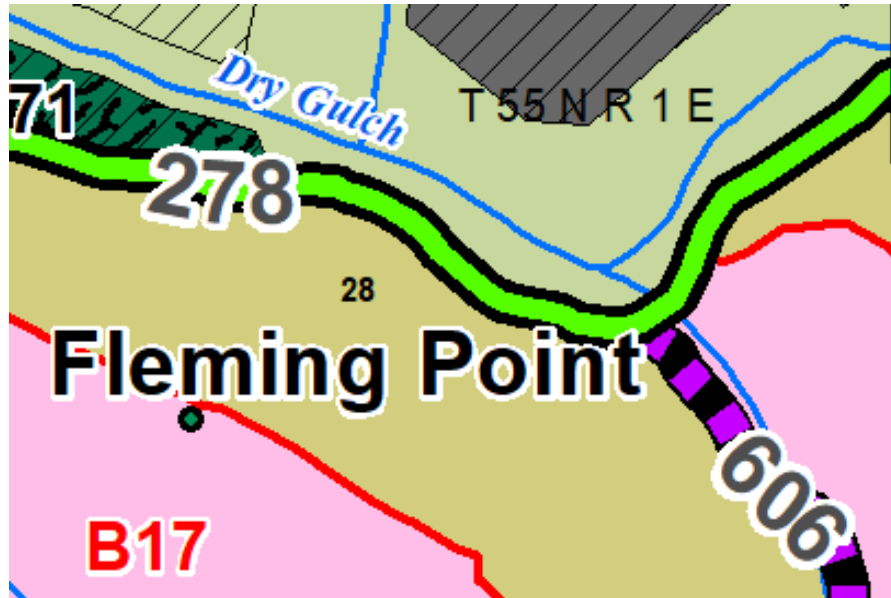
Road 2706 x 278. G. 2706-3-8.

Road open, gate locked open. No photo. Seasonally Restricted on PAM.



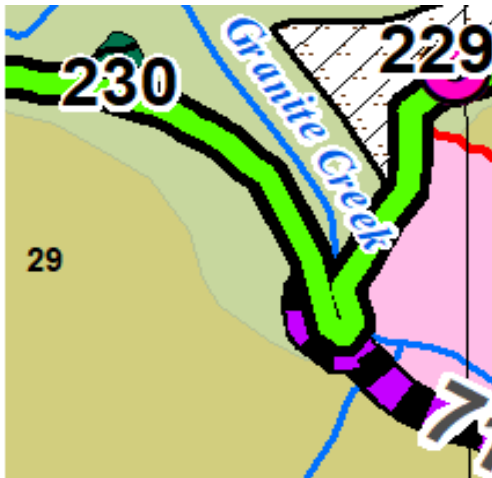
ATV Trail 606 x 278.

Trail open and not secure. Should be counted as open for elk and grizzly security. Mapped on PAM.



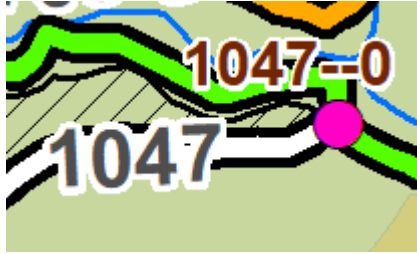
Trail 71 x 278.

Signed as hiking trail only. Trail has dirt bike use. Trail mapped as Motorcycle Trail on PAM. There is a conflict on allowed use between sign and map. Trail must be counted as open for elk and grizzly security.



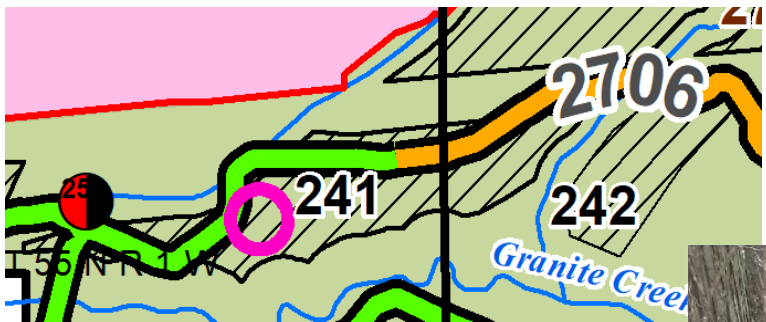
Road 1047 x 278. G 1047-0.

Gate closed but dirt bikes can get around on the right side, or slide under gate, possibly atv's also. Not secure, functionally open.
Closed on PAM.



User created atv trail off of Road 2706.

Not secure. Not mapped on PAM. GPS track does not delineate the entire road length.



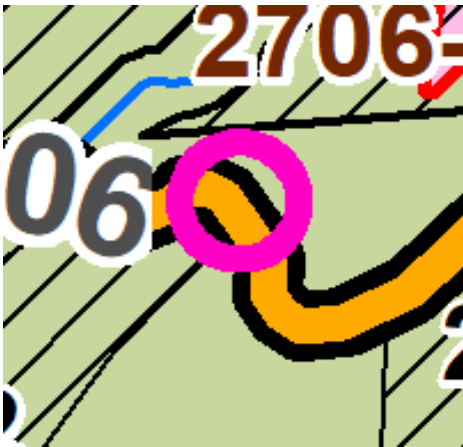
Road 2706.

Transition from year-round to seasonal restriction on PAM. Gate open with lock.



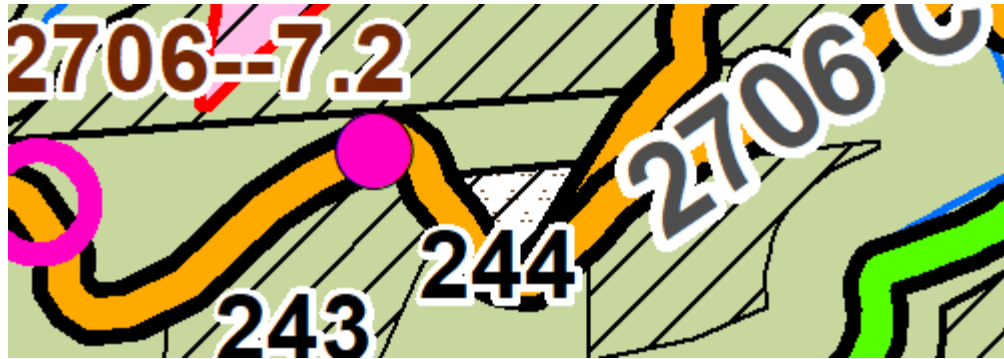
User created atv tracks up transmission corridor x 2706.

One of several atv tracks. Should be mapped and counted as open for elk and grizzly security. Not mapped on PAM.



Road 2706-C x 2706. G 2706-7.2.

No gate found. Not secure. Not mapped on PAM. No photo taken.



Road(s) up transmission line.

Open. Not mapped on PAM. Should be counted as open for elk and grizzly security.

