



**Montana High Divide Trails
Partnership Agreement
Signed and Submitted
September 25, 2007**

VISION AND RECOMMENDATIONS

- 1. Pledge of Cooperation**
- 2. Continental Divide National Scenic Trail –Travel**
- 3. Landscapes Recommended for Wilderness**
- 4. Landscapes Recommended as Conservation Areas**
- 5. Collaborative Trail Projects**

We pledge to work cooperatively to:

- Help national forest managers secure new funds and partnerships that help achieve goals of *Montana High Divide Trails*.
- Enlist volunteers from conservation, hiking, equestrian, bicycling and other communities to cooperate with national forest managers to maintain, restore and construct quiet mountain trails for public use and enjoyment.
- Support revised forest and travel plans consistent with the goals of *Montana High Divide Trails*.
- Support specific trail and stewardship projects that help achieve goals of *Montana High Divide Trails*.
- Support trail standards and education designed to minimize conflict and promote cooperation between quiet trail users, in keeping with goals of *Montana High Divide Trails*.
- Help national forest managers achieve national goals for completing, restoring and managing the Continental Divide National Scenic Trail between the Pintlers and Scapegoat Wilderness.
- Support congressional legislation that helps achieve the goals of *Montana High Divide Trails*.
- Cooperate with public land and wildlife managers to conserve, restore and enhance excellent habitats for fish and wildlife species along Montana's Continental Divide.
- Help expand public understanding and support for the goals and cooperative approach of *Montana High Divide Trails*.

VISION AND RECOMMENDATIONS

The *Montana High Divide Trails* Agreement proposes a carefully balanced package of recommendations for (1) Continental Divide National Scenic Trail, (2) Wilderness Areas, (3) Quiet Trail and Wildlife Conservation Areas, and (4) Specific Trail Projects to link communities and secure future public access to quiet mountain trails and natural splendors along Montana's High Divide.

TRAVEL RECOMMENDATIONS ALONG THE CONTINENTAL DIVIDE NATIONAL SCENIC TRAIL: From the Anaconda-Pintler Wilderness to the Scapegoat Wilderness:

We fully respect the history, purpose and intent of the Continental Divide National Scenic Trail (CDNST) as America's longest quiet mountain trail. With this common understanding, we support certain portions of the Continental Divide National Scenic Trail as traditional foot and pack trails, while other portions of the trail—such as those near Butte and Helena—we agree are well-suited for nonmotorized uses including bicycles, foot and pack stock.

We believe our recommendations are entirely consistent with national policy for the Continental Divide National Scenic Trail and the specific character of the trail on the Pintler, Butte, Jefferson, Helena, Lincoln, and Rocky Mountain Ranger Districts.

- Through the Anaconda-Pintler Wilderness and adjoining wilderness additions (see attached map) we agree the Continental Divide National Scenic Trail should be managed as a wilderness trail for traditional travel by foot and pack stock.
- Between the Mount Haggin Wildlife Management Area and Pipestone Pass we agree the Continental Divide National Scenic Trail should be managed for nonmotorized uses including foot, pack stock and bicycles.
- From Pipestone Pass to Elk Park we support nonmotorized uses including foot, pack stock and bicycles, including O'Neill Creek Inventoried Roadless Area and Whitetail-Haystack Inventoried Roadless Area.
- From Elk Park to Champion Pass we support nonmotorized uses of the Continental Divide Trail including foot, pack stock and bicycles.
- From Champion Pass north to Electric Peak, we endorse foot, pack stock and bicycle use of the Continental Divide Trail.
- Between Electric Peak and Bison Mountain—within the Electric Peak-Little Blackfoot (proposed) Wilderness—we agree the Continental Divide National Scenic Trail should be managed for traditional travel by foot and pack stock.
- From Bison Mountain to Josephine a new trail segment is planned for 2008 construction. Here we endorse travel by foot, stock and bicycles.
- From Josephine to MacDonald Pass we endorse travel by foot stock and bicycles. We also agree an important goal is restoration and relocation of the CDT to a single-track nonmotorized trail along the Divide between Jericho and Josephine.
- From MacDonald Pass north to Meyers Hill we endorse travel by foot stock and bicycles with eventual relocation of trail segments off roads to quiet mountain trail.
- From Meyers Hill north to Cellar Gulch Trail—within the Nevada Mountain Wilderness candidate area—we endorse travel by traditional foot and pack stock.
- From Cellar Gulch to Stemple Pass we endorse foot, pack stock and bicycles and relocation of the trail off roads to quiet single-track trail.
- From Stemple Pass to Flesher Pass we endorse foot, pack stock and bicycle travel.

- From Flesher to Rogers Pass we endorse foot, pack stock and bicycle travel with shared mitigation to provide security for grizzly bears habitat in this area
- From Rogers Pass north to the Scapegoat Wilderness—including the Silver King Addition to Scapegoat—we endorse travel by traditional foot and pack stock.

Table 1. Travel Recommendations Along the Continental Divide National Scenic Trail under the Montana High Divide Trails Agreement

| CD Trail Section | Public Lands | Trail Miles | Suitable Trail Uses |
|---|---|-------------|---------------------------|
| Anaconda-Pintler Wilderness—Interstate 15 | Beaverhead-Deerlodge NF/Fish Wildlife Parks | 41.3 | Foot, equestrian, bicycle |
| Interstate 15—Pipestone Pass | Beaverhead-Deerlodge | 21.3 | Foot, equestrian, bicycle |
| Pipestone P—Homestake Pass | Thompson Park | 6.7 | Foot, equestrian, bicycle |
| Homestake Pass—Elk Park | Beaverhead-Deerlodge | 29.2 | Foot, equestrian, bicycle |
| Elk Park—Champion Pass | Beaverhead-Deerlodge | 22.0 | Foot, equestrian, bicycle |
| Champion Pass—Electric Peak | Beaverhead-Deerlodge | 10.7 | Foot, equestrian, bicycle |
| Electric Peak—Bison Mtn Trail | Beaverhead-Deerlodge Helena | 11.5 | Foot and equestrian |
| Bison Mtn—MacDonald Pass | Helena/BDL NF | 21 | Foot, equestrian, bicycle |
| MacDonald Pass—Meyers Hill | Helena NF | 22.4 | Foot, equestrian, bicycle |
| Meyers Hill—Cellar Gulch Tr CDT | Helena NF | 12.9 | Foot and equestrian |
| Cellar Gulch—Stemple Pass | Helena NF | 5.1 | Foot, equestrian, bicycle |
| Stemple Pass—Flesher Pass | Helena NF | 11.3 | Foot, equestrian, bicycle |
| Flesher Pass—Rogers Pass | Helena NF | 11.1 | Foot, equestrian, bicycle |
| Rogers Pass—Scapegoat Wilderness | Helena/Lewis & Clark | 14.2 | Foot and equestrian |

HERITAGE LANDSCAPES RECOMMENDED FOR WILDERNESS:

We endorse the following outstanding special areas and urge they be recommended, managed and designated as wilderness:

- **Anaconda-Pintler Wilderness Inclusions** (Beaverhead-Deerlodge National Forest): We support inclusion of outstanding wildlands, rugged peaks, high lakes and streams adjoining the Anaconda-Pintler Wilderness along the Divide, as shown on map.
- **Dolus Lakes Wilderness** (Beaverhead-Deerlodge National Forest): We support wilderness for the remote Dolus Lakes area in the Flint Creek Range, with its high wilderness values, excellent habitat for wolverine and mountain goat, rugged terrain and outstanding opportunities for solitude and primitive recreation.
- **Humbug Spires Wilderness** (Bureau of Land Management): We support wilderness for the Humbug Spires Wilderness Study Area, with its dramatic granite spires, accessible from the Continental Divide.

- **Highlands Crest Wilderness** (Beaverhead-Deerlodge National Forest): We endorse the Highlands Crest Wilderness with its majestic snow-capped peaks, rugged high country, mountain goat, bighorn sheep and elk habitat southeast of Butte.
- **Electric Peak-Little Blackfoot Meadows Wilderness** (Beaverhead-Deerlodge / Helena National Forests): We support Wilderness for the heart of this wild area, imbedded within a larger backcountry area emphasizing quiet mountain trails and conservation of grizzly, wolverine, lynx, elk and native trout habitats.
- **Black Mountain Wilderness** (Helena National Forest): We support a Wilderness imbedded within a larger area emphasizing quiet mountain trails and wildlife habitat.
- **Nevada Mountain Wilderness** (Helena National Forest): We endorse Wilderness for the Nevada Mountain Area, with its outstanding backcountry hunting, skiing; and prime wilderness habitat for wolverine, grizzly, elk and lynx along the Continental Divide northwest of Helena.
- **Silver King Inclusion in Scapegoat Wilderness** (Helena / Lewis and Clark National Forests): We support inclusion of the Silver King-Falls Creek Addition to the Scapegoat Wilderness, including Red Mountain Research Natural Area, Indian Meadows, Falls Creeks, Dearborn and Elk-Benchmark wildlands, which adjoin the Scapegoat and connect to the South Fork Sun River.

**Table 2. Heritage Landscapes Recommended for Wilderness
 under the
 Montana High Divide Trails Agreement**

| Wilderness Heritage | National Forest | Acres (approx) | Comments |
|---|-----------------------------|---------------------------|--|
| Anaconda-Pintler Wilderness Inclusion | Beaverhead-Deerlodge | 33,200 | Mountain lakes, sub-alpine larch and mountain goats along Continental Divide. |
| Dolus Lakes | Beaverhead-Deerlodge | 9,400 | Rugged and remote corner of Flints |
| Humbug Spires | Bureau of Land Management | 11,175 | Dramatic Granite Spires along Divide Boundaries match BLM rec'd W. |
| Highlands Crest | Beaverhead-Deerlodge | 20,400 | Stunning 10,000' peaks south of Butte |
| Electric Peak-Little Blackfoot Meadows | Beaverhead-Deerlodge Helena | 22,000 | Wild habitat of grizzlies, wolverine, lynx, native trout. Wilderness imbedded in Quiet Trails/Wildlife Conservation Area. Boundaries match 06 winter agreement-Deerlodge Snowmobile Club |
| Black Mountain | Helena | 9,000 | Wilderness core adjoins quiet trails areas |
| Nevada Mountain | Helena | 43,500 | Carved cirques, wolverine and grizzlies Boundaries match 05 winter agreement- Lincoln Snowmobile Club |
| Silver King Inclusion in Scapegoat Wilderness | Helena/Lewis and Clark | 84,000 | Bob Marshall Wilderness Country, Boundaries match 05 winter agreement-Lincoln Snowmobile Club |
| Estimated Total: | | 232,675 | |

QUIET TRAIL AND WILDLIFE CONSERVATION AREAS:

We recommend the following lands be designated and managed as special backcountry management areas featuring quiet trails for foot, equestrian and bicycle travel and conservation of fish and wildlife habitats:

- **Continental Divide – Anaconda Range:** We support quiet trails and continued summer/fall nonmotorized management of national forest lands in upper Ten Mile and Twelve Mile Creeks along the Continental Divide.
- **Flint Creek Range:** In addition to Dolus Lakes Wilderness, we recommend conservation of three backcountry tracts offering quiet mountain trails:
 - West Flints encompassing Copper Creek Lakes, Dora Thorn, Crystal and Boulder High Lakes—boundaries match current Deerlodge Forest Plan A4 nonmotorized backcountry management area.

- Mount Powell/Trask Lakes: Trask Lakes Basin to summit of Mount Powell—boundaries match current Deerlodge Forest Plan A4 nonmotorized backcountry management area.
- Lost Creek Canyon Primitive Area: We support managing the recently acquired 6,000-acre Lost Creek Canyon northwest of Lost Creek State Park near Anaconda, for wildlife habitat, education and nonmotorized outdoor recreation including a system of quiet trails for foot, pack stock and bicycle use accessible from Anaconda.
- **Thompson Park:** We agree that this city park should be restored to the original use as designated in the early 20th century. These uses would limit motorized recreation and allow trail-based nonmotorized recreational uses—including foot, pack stock and bicycles.
- **O'Neil Creek Quiet Trails and Wildlife Conservation Area:** We agree this roadless landscape should be managed primarily for non-motorized management including foot, pack stock and bicycle uses. We encourage the U.S. Forest Service to relocate the Continental Divide National Scenic Trail in this area along the Continental Divide east of Butte.
- **Whitetail-Haystack Quiet Trails and Wildlife Conservation Area:** We agree the primary emphasis of this large roadless complex should be wildlife and quiet mountain trails. We recommend modest boundary changes to the draft forest and travel plans to protect extensive wetlands in Little Boulder Park and near Whitetail Reservoir by keeping this area in trail-based nonmotorized summer/fall recreational uses—including foot, pack stock and mountain bicycles.
- **Electric Peak—Little Blackfoot Quiet Trails and Wildlife Conservation Area:** The Quiet Trails/Wildlife Area surrounds a wilderness core to fully conserve this heritage landscape. From Cliff Mountain north to the forest boundary on the Pintler Ranger District, we support an extension of the current Deerlodge Forest Plan A4 nonmotorized area to match adjoining Electric Peak Recommended Wilderness on the Helena National Forest. To honor a pre-existing partnership agreement with Deerlodge Snowmobile Club, we recommend the summer/fall quiet trails area west of a north-south line from Kading—Cliff Mountain—Electric Peak be available for winter snowmobile use. Lands east of that line—consistent with the winter agreement—we endorse as recommended wilderness with Thunderbolt Creek nonmotorized year round with special wildlife emphasis. Bison Creek should remain trail-less to retain excellent wildlife habitat values.
- **MacDonald Pass Quiet Trails and Wildlife Conservation Area:** Wildland habitat for lynx, elk, moose, grizzly and wolverine in a key corridor along the Continental

Divide which includes Jericho Inventoried Roadless Area, portions of Helena's Ten Mile municipal watershed, the Continental Divide National Scenic Trail and Switchback Trail.

- **Mount Helena Ridge—South Hills Quiet Trails Area:** National forest lands in Helena's backyard link with city parks and open space to provide 75 miles of quiet trails, vistas and open space where Helenans find room to get away from it all, on foot, bicycle and horseback.
- **Sweeney Creek Quiet Trails and Wildlife Conservation Area:** Granite spires mark this overlooked 5,000+acre wildland gem, which stretches from the Helena Valley to the Continental Divide at Priest Pass. The entire area provides rich wildlife habitat for moose, elk, lynx and bear and educational opportunities abound.
- **Specimen Creek Quiet Trails and Wildlife Conservation Area:** Specimen Creek is a popular area for family hikes, picnics, bicycling, skiing and snowshoeing along the Continental Divide as well as a key wildlife corridor. Nonmotorized boundaries match 2005 winter recreation agreement with the Lincoln Snowmobile Club.
- **Rogers Pass Quiet Trails and Wildlife Conservation Area:** North of Flesher Pass the Continental Divide Trail climbs into the rugged windswept highlands of the Anaconda Hill Primitive Area straddling headwaters of the Big Blackfoot and Dearborn Rivers. Mountain goats, grizzlies, wolverine, lynx and elk inhabit this stretch of Montana's High Divide. Of special consideration is keeping space for grizzly sows and cubs to feed without interference in meadows along the Divide.

QUIET TRAIL PROJECTS:

Montana High Divide Trails envisions a wide-ranging and diverse system of quiet trails along the Continental Divide that offer mountain trails for everyone including seniors and families of all ages.

- **Garry Mountain Trail:** We support establishment of a bicycle loop trail around Garry Mountain readily accessible from the community of Anaconda.
- **Beaver Ponds Trails #105:** Located southwest of Butte, we support the completion of the Beaver Ponds Trail #105 Re-Route and the continuation of developing Forest Service network trails within the area between Homestake and Pipestone Pass.
- **Maud-S Access Trail to the Continental Divide:** We support completion of the Maud-S access trail to the Continental Divide. Completion of this trail would greatly improve access from Butte to new portion of the Continental Divide National Scenic Trail, which is proposed to follow the Continental Divide itself along the dramatic "East Ridge." Both trails will provide breathtaking vistas of rugged ranges in the heart of the Northern Rockies.
- **Thompson Park Trails:** Thompson Park is co-managed under 2006 agreement between Butte-Silver Bow County and the U.S. Forest Service. We support the restoration of a sustainable trail network within Thompson Park to encourage a range of quiet trail uses located in this popular forest area south of Butte.
- **Completion of Continental Divide National Scenic Trail:** Located to the south, east, and north of Butte, we support construction of the Continental Divide National Scenic Trail in a sustainable and cooperative fashion, and the enforcement of nonmotorized uses, including foot, pack stock and bicycles.
 - I-15 to Pipestone Pass;
 - Pipestone Pass to Homestake Pass;
 - Homestake Pass to Elk Park;
 - Elk Park to Champion Pass; and
 - Champion Pass to Electric Peak.
- **Red Rock—Basin Creek Trails:** We encourage the Jefferson Ranger District to restore and rehabilitate a series of connecting quiet single-track trails in the Red Rock, Fox Creek, Basin Creek and Joe Bowers drainages that would provide a fine system of loop trails for bicyclists, hikers, hunters and equestrians.
- **Cliff Mountain Crest Trail:** We encourage the Jefferson, Pintler and Helena Ranger Districts to cooperate in restoring and connecting a series of spectacular ridge trails linking Kading Campground to Cliff Mountain, Electric Peak and Cottonwood Lake, forming the Cliff Mountain Crest Trail. We recommend that bicycle use continue

| Table 3. Quiet Trails and Wildlife Conservation Areas under the Montana High Divide Trails Agreement | | | |
|---|-----------------------------|------------------------|---|
| Quiet Trails / Wildlife Areas | | National Forest | Acres |
| Field Notes | | | |
| Ten Mile High Lakes | Beaverhead-Deerlodge | 7,000 | High lakes, basins and 20,000+ peaks. On Wise River Ranger District |
| West Flints | Beaverhead-Deerlodge | 12,500 | Quiet trails, mountain lakes. Boundaries match A4 Nonmotorized Area with exception for winter snowmobile access |
| Mount Powell/Trask Lakes | Beaverhead-Deerlodge | 18,000 | Quiet trails, mountain lakes. Boundaries match A4 Nonmotorized Area with exception for winter snowmobile access |
| Lost Creek Canyon Primitive Area | Beaverhead-Deerlodge | 9,500 | Adopts proposal of Anaconda bicyclists for loop bike trails accessible from town |
| Thompson Park | Beaverhead-Deerlodge | 3,450 | Managed jointly by Butte-Silver Bow and USFS. |
| O'Neil Creek Backcountry | Beaverhead-Deerlodge | 7,400 | USFS plans to relocate CDNST to East Ridge on the Divide overlooking Butte. |
| Whitetail-Haystack Backcountry | Beaverhead-Deerlodge | 74,400 | Extensive, fragile wetlands along the Continental Divide. |
| Electric Peak-Little Blackfoot | Beaverhead-Deerlodge Helena | 28,000 | Quiet Trails/Wildlife Area combines with Wilderness to Conserve 50,000 acres |
| MacDonald Pass South (Jericho IRA) | Helena | 9,500 | Wildlife corridor/lynx habitat/CDNST links with Switchback Pass Trail |
| Mount Helena Ridge-South Hills ¹ | Helena | 17,300 | 75 miles of trails blend national forest and city of Helena Open Space lands |
| Sweeney Creek Backcountry | Helena | 5,500 | Excellent wildlife habitats link Helena Valley to Continental Divide |
| Specimen Creek ² Backcountry (South of Flesher Pass) | Helena | 20,000 | Wildlife corridor surrounds CDNST. Boundaries match 05 winter agreement with Lincoln Snowmobile Club |
| Rogers Pass (Anaconda Hill IRA) | Helena | 19,000 | Key grizzly habitat along CDNST Boundaries match 05 winter agreement |
| Estimated Total: | | 231,550 | |

¹ Mt Helena Ridge, South Hills, South Black Hall Meadows, portions of Lazyman IRA bordering Black Mountain Wilderness

² Specimen Roadless Area plus CDNST corridor

under the status quo within the Electric Peak Recommended Wilderness until the Cliff Mountain Crest Trail is completed and available for bicycle travel.

- **Elliston Bicycle Trail:** In the future we encourage the Helena Ranger District to establish a bicycle trail between the community of Elliston and Kading, eventually developing loop trail options in Hat Creek and near Kading
- **Completion of the Continental Divide National Scenic Trail:**
 - **Josephine—Bison Mountain:** We encourage the Helena and Jefferson Ranger Districts to (1) prioritize completion of planned 2008 new section of the Continental Divide National Scenic Trail between Josephine and Bison Mountain and (2) retain and restore as single-track existing trails including the Continental Divide Trail between Ontario and Bison Creeks and across the shoulder of Bison Mountain. This will provide 14.5-mile trail loop connecting the Helena and Beaverhead-Deerlodge National Forests along the Continental Divide. We recommend that bicycle use continue under the status quo within the Electric Peak Recommended Wilderness until the Josephine-Bison Continental Divide Trail is completed and available for bicycle travel. ³
 - **Jericho—Josephine:** We encourage the Helena National Forest to survey and construct a new section of Continental Divide National Scenic Trail from Bear Meadows to Josephine along the Continental Divide itself, with the eventual goal of a quiet single-track trail connecting MacDonald Pass to Josephine and Bison Mountain.
 - **Priest Pass—Meyers Hill:** A future priority for the Helena Ranger District following completion of travel plans is to relocate and restore the Continental Divide Trail to a quiet single track trail between Priest Pass and Meyers Hill.
- **Ridge—Bridge “Flume” Trail:** We support survey of new trail on the east end of the Lazyman Roadless Area which would provide a new trail for foot, bicycles, equestrian travel from Mount Helena Ridge Trail to Brooklyn Bridge Trail. A series of historic water flumes in this area provide ideal paths.
- **“SkiHi” Crest Trail:** We support reconstruction of sustainable new single-track trail to replace erosive old trails connecting the mountain crest from “Brooklyn Bridge” to SkiHi Peak, connecting to South Hills trails and open space lands near Tucker Gulch. The result will comprise a 22-mile arc of quiet single-track trails stretching from Mount Helena City Park to SkiHi Crest and back to Helena’s South Hills

³ Consistent with Helena Forest Plan goals for Electric Peak Recommended Wilderness.

- **Travis Creek "Flume" Trail:** We encourage the Helena Ranger District to survey historic water flumes which could provide year round trail access for bicyclists, hikers, equestrians, skiers and snowshoers to the Blackhall Meadows Trail.
- **Sweeney Creek Trails:** The Helena Ranger District is encouraged to work with neighbors and trail users to plan a modest quiet trail system that connects to Open Space lands and trails—respectful of key wildlife habitats.
- **Copper Lakes Trail:** The Lincoln Ranger District is encouraged to retain and restore as necessary, quiet single-track trails including Copper Lakes Trail #485, Stonewall Creek.

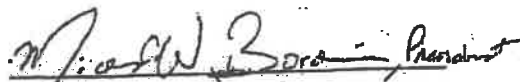
Table 4. New Trail Projects under the Montana High Divide Trails Agreement

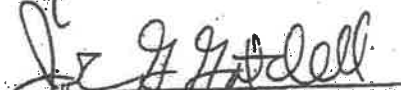
| Trail Projects | Public Lands | Miles | Field Notes |
|--|---|--------------|--|
| Garry Mountain | Beaverhead-Deerlodge/ Garry Mountain Wildlife Mgmt Area | | Anaconda Bicyclists seek quiet trail loop encircling Garry Mountain WMA |
| Continental Divide Trail Completion: | | | |
| I-15-Pipestone Pass | Beaverhead-Deerlodge | 21.3 | Complete Continental Divide Trail |
| Pipestone-Homestake Pass | Beaverhead-Deerlodge | 6.7 | Complete Continental Divide Trail |
| Homestake Pass-Elk Park | Beaverhead-Deerlodge | 29.2 | Complete Continental Divide Trail |
| Elk Park-Champion Pass | Beaverhead-Deerlodge | 22 | Complete Continental Divide Trail |
| Champion Pass-Electric Peak | Beaverhead-Deerlodge | 10.7 | Complete Continental Divide Trail |
| Beaver Ponds Trail #105 | Thompson Park | 6.1 | Trail access to Continental Divide |
| Maude S Trail | Beaverhead-Deerlodge | 2 | Trail access to Continental Divide |
| Electric Peak-Cottonwood Lake Trail (EP-Cottonwood Lake-Red Rock) | | 7.7 | 2008 Proposed Construction |
| Red Rock Creek Trails | Beaverhead-Deerlodge | 9.0 | Multiple bicycle loop trails |
| Cliff Mountain Crest Trail | Beaverhead-Deerlodge Helena | 10.5 | Survey to ID best links between Kading, Cliff Mountain and Electric Peak Trails. |
| SF Basin Creek-Fox Tails | Beaverhead-Deerlodge | 5.1 | ATV use allowed on SF Basin |
| Joe Bowers Trail | Beaverhead-Deerlodge | 3.0 | Quiet single-track / links to CDT |
| Elliston Bicycle Trail | Helena NF | 7.5 | Links to Hat Cr, Kading, Cliff Mountain, |
| Josephine-Bison Mountain Trails | Beaverhead-Deerlodge Helena | 14.4 | Complete 7.3 mi Continental Divide Trail / Create loop using existing CDT trail |
| Jericho High Divide Trail | Helena NF | 8.0 | Complete Continental Divide Trail / Easements needed across inholdings |
| "Ridge to Bridge" Trail | Helena NF | 2.2 | Historic water flumes plus new single-track / links to open space |
| "Skihi" Trail | Helena NF | 6.4 | Rehab plus new trail / links to open space |
| Travis Creek "Flume" Trail | Helena NF | 3 | Historic water flume / excellent trail |
| Sweeney Creek Trails | Helena NF | ? | Future trails potential |
| Mullan Pass-Meyers Hill | Helena NF | 13.1 | Complete Continental Divide Trail |
| Copper Lakes Trails | Helena NF | 4.5 | Combines single-track and old roads |
| | Estimated total | 191.4 | New and Restored Single Track Trails |


Tom Tidwell, Regional Forester
USDA Forest Service
September 25, 2007
Page 13 of 14

To this end we look forward to working with you and your staff on each of the National Forests and Ranger Districts along Montana's High Divide.

Sincerely,


Highlands Cycling Club

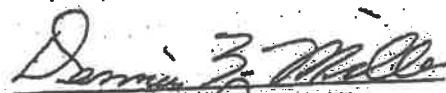

Montana Wilderness Association



Helena Bicycle Club

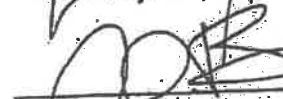

Helena Trail Riders

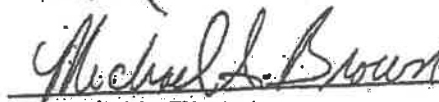

Helena Outdoor Club


Mile-High Back Country Horsemen


Last Chance Back Country Horsemen

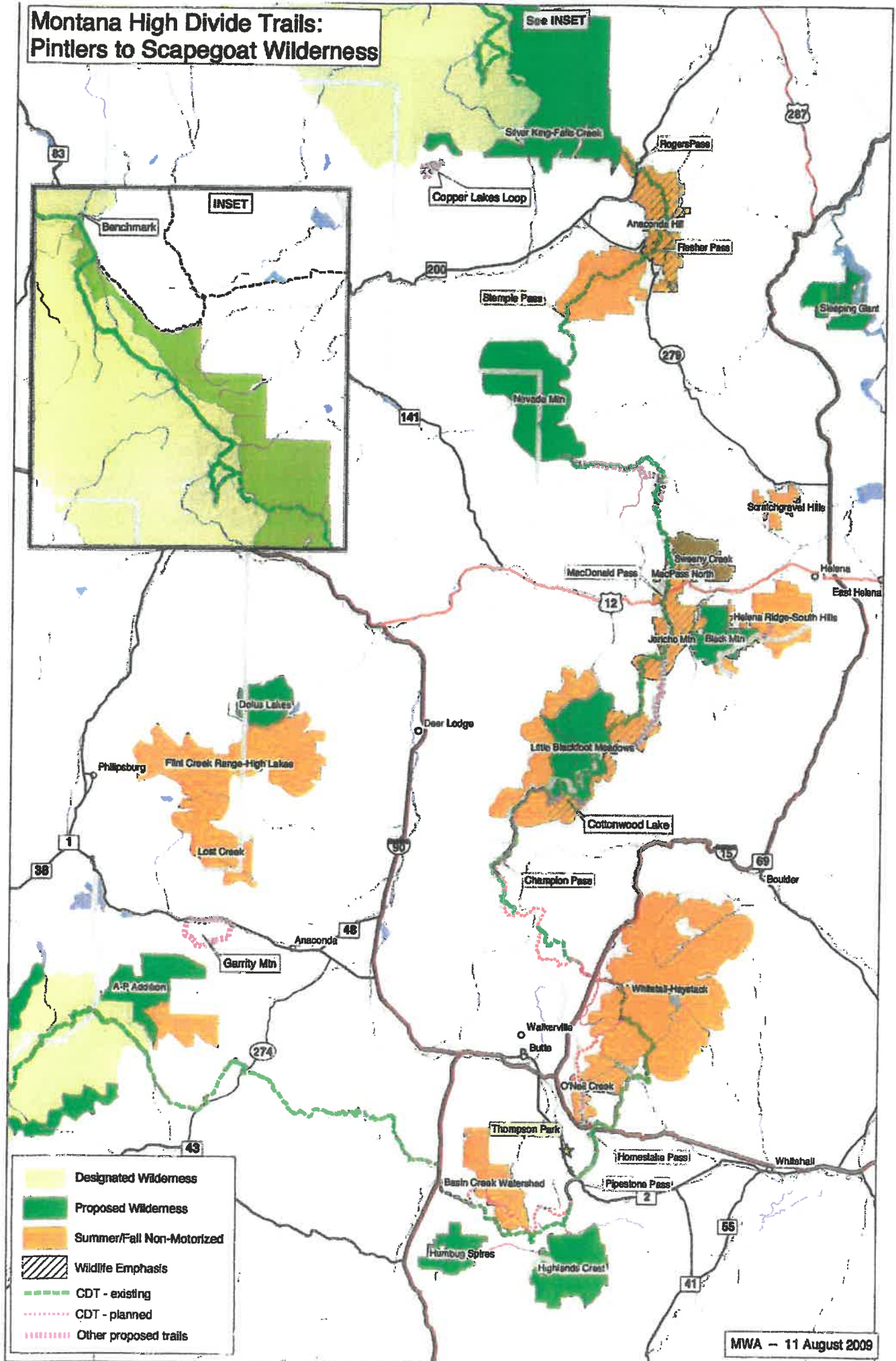

Great Divide Cycling Team


Prickly Pear Land Trust


Wild Divide Chapter
Montana Wilderness Association

cc: Abigail Kimbell, Chief, U.S. Forest Service
Joel Holtrop, Deputy Chief
Bruce Ramsey, Supervisor, Beaverhead-Deerlodge National Forest
Kevin Riordan, Supervisor, Helena National Forest
Lesley "Spike" Thompson, Supervisor, Lewis and Clark National Forest
Charlene Buca Gentry, Pintler District Ranger
Charlie Hester, Wise River District Ranger
Steve Edgeline, Butte District Ranger
Terry Sexton, Jefferson District Ranger
Duane Harp, Helena District Ranger
Amber Kamps, Lincoln District Ranger
Mike Munoz, Rocky Mountain District Ranger
Greg Warren, National Director, Continental Divide National Scenic Trail
Clint Blackwood, State Trails Coordinator, Montana Department of Fish, Wildlife
and Parks

Montana High Divide Trails: Pintlers to Scapegoat Wilderness



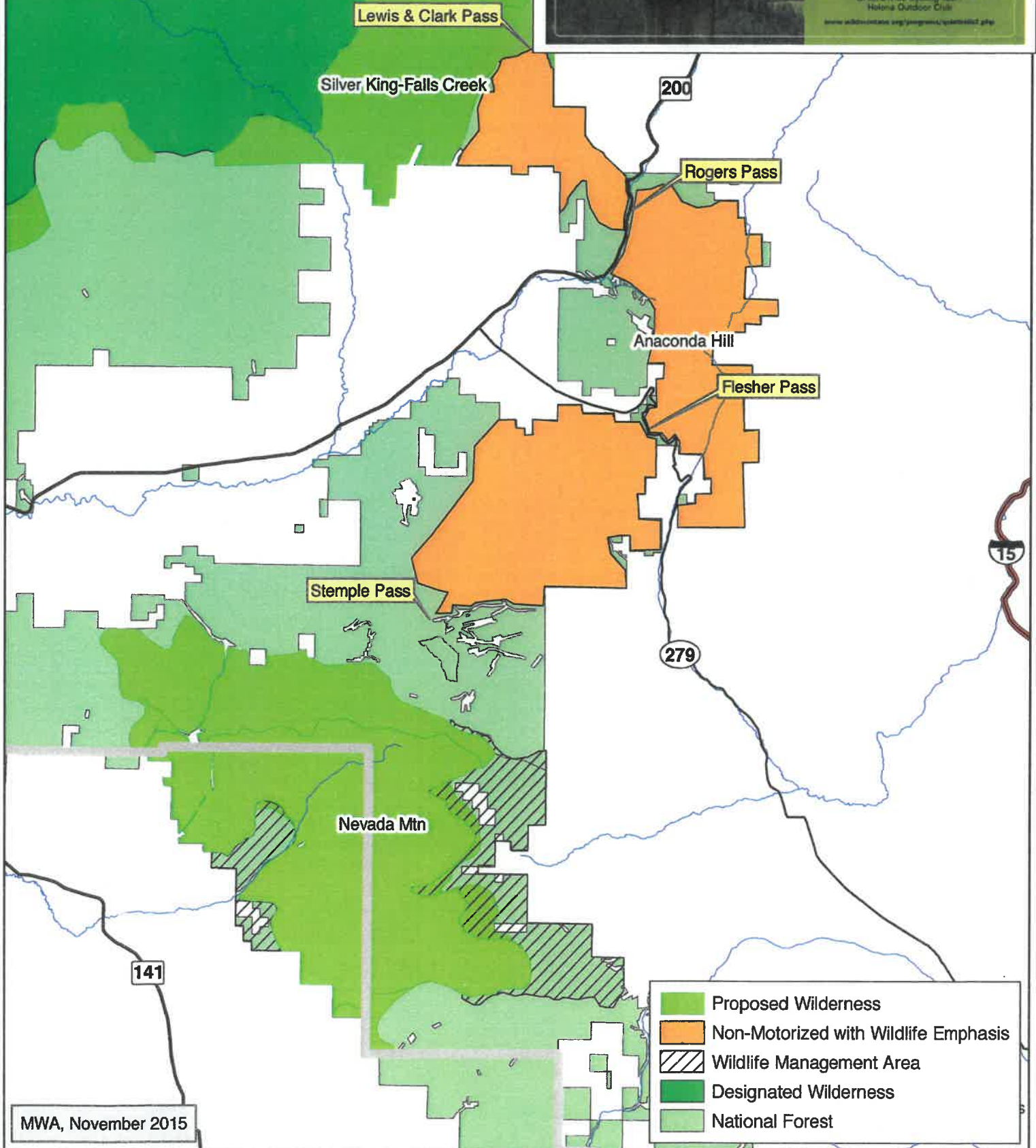
Continental Divide Helena-Lewis & Clark National Forests North



MONTANA HIGH DIVIDE TRAILS

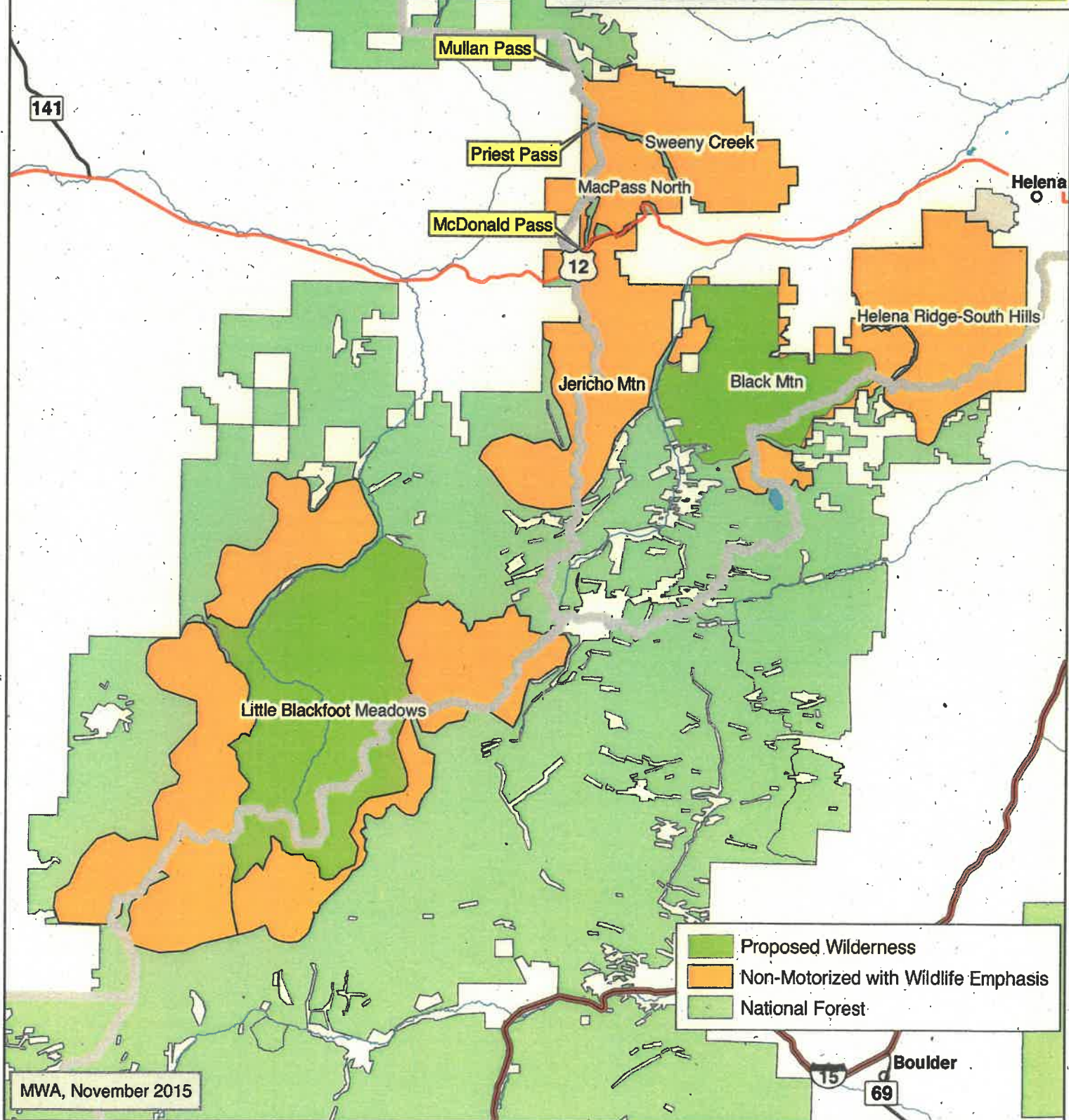
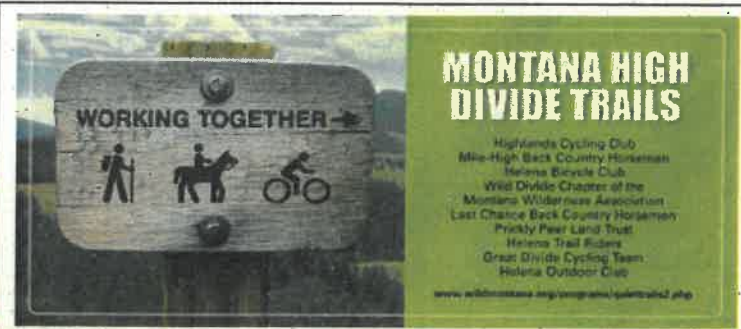
Highlands Cycling Club
 Mile-High Back Country Horsemen
 Helena Bicycle Club
 Wild Divide Chapter of the
 Montana Wilderness Association
 Last Chance Back Country Horsemen
 Prickly Pear Land Trust
 Helena Trail Riders
 Great Divide Cycling Team
 Helena Outdoor Club

www.wilddividetrails.org/programs/updates.html



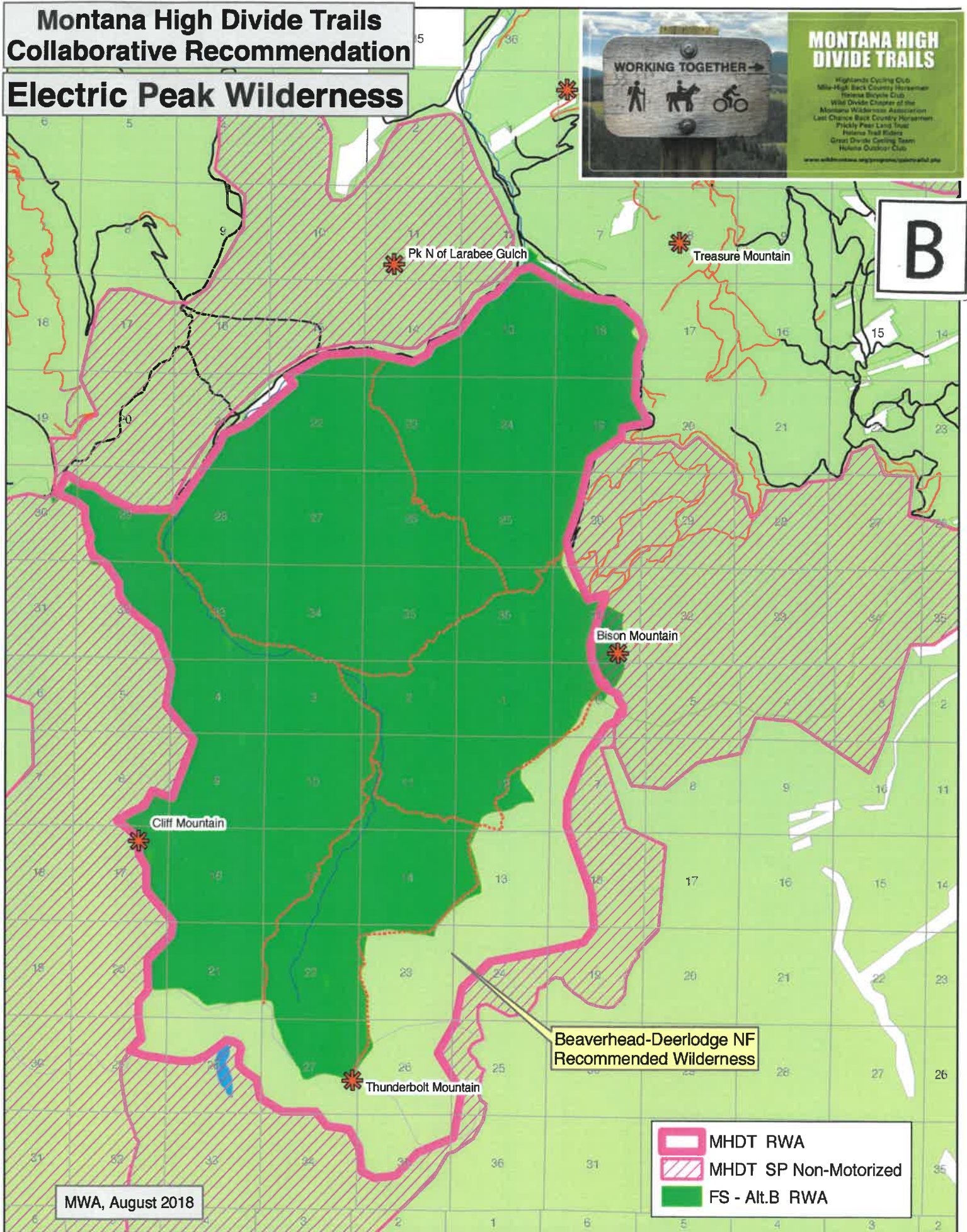
MWA, November 2015

Continental Divide Helena-Lewis & Clark National Forests South



Montana High Divide Trails Collaborative Recommendation

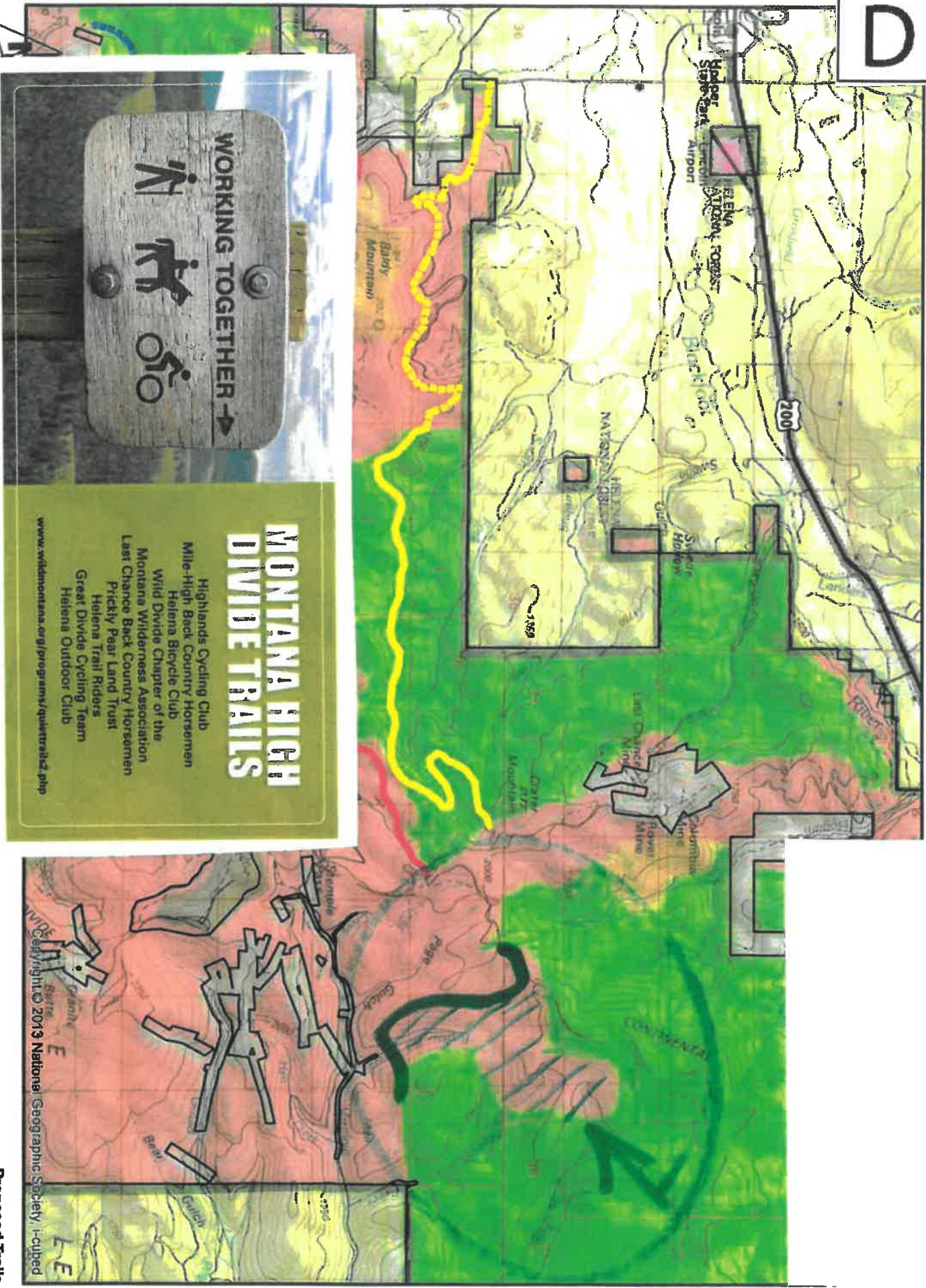
Electric Peak Wilderness



Nevada Mountain Wilderness



D

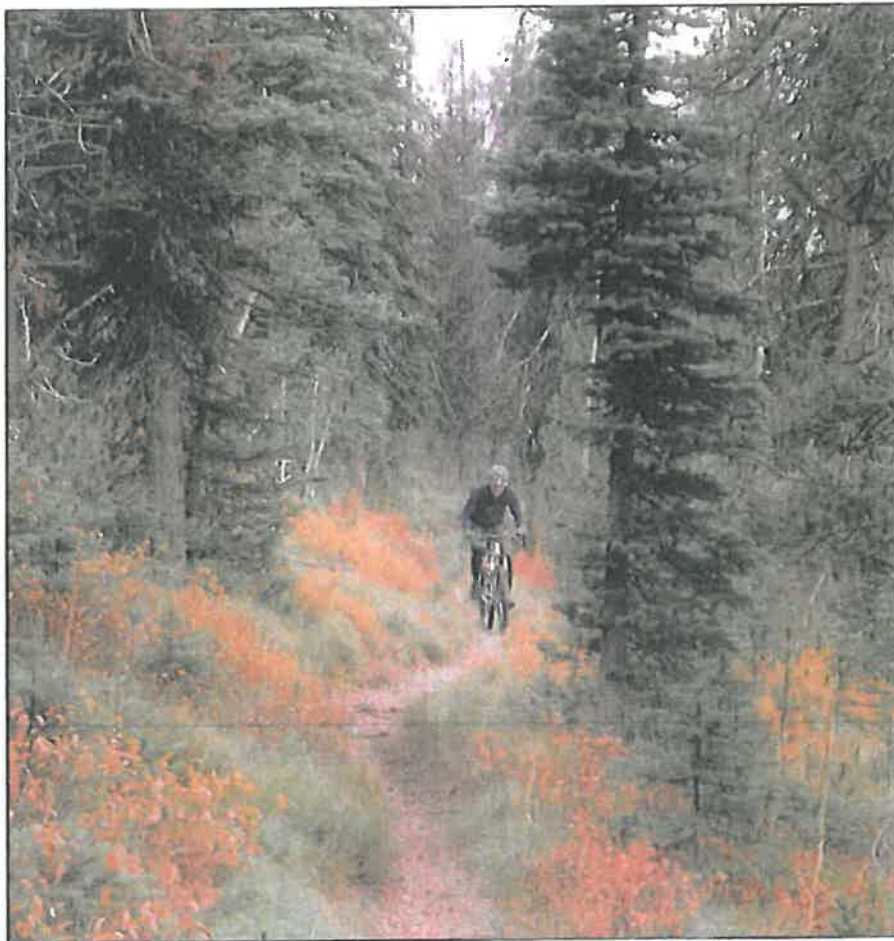


Stemple-Lincoln Trail (Requested)
Semi-Primitive Non-Motorized ROS

Proposed Trails
ROS Changes Required
Helena-Lewis and Clark National Forest
Plan Revision

Mountain Bicycle Trails Master Plan Lincoln, Montana

Fall/Winter 2009



PREPARED FOR: Lincoln Valley Chamber of Commerce

PREPARED BY: The International Mountain Bicycling Association - Trail Solutions program
PO Box 7578
Boulder, CO 80306



Baldy to Stemple Pass Trail

Sure to be the highlight of most bicyclists' visit to Lincoln, the Baldy to Stemple Pass trail will typify the high-quality, mountain bicycle-specific trail experience that defines the common understanding of an "epic ride". Winding along the ridgeline above Stemple Pass Road, the trail will provide stunning views to both the north and south, following a slightly descending alignment until passing Baldy Mountain and dropping onto the valley floor. This route has many options for users, who can ride it as an out-and-back, loop it by climbing Stemple Pass



Baldy to Stemple Pass Trail.

Road, shuttling up the road to Stemple Pass, or, for the serious rider, utilizing the trail as part of the "Southern Epic" loop.

Because much of this trail will be low-impact construction along the ridgeline the average per foot development cost is reduced.

Allowed uses: Pedestrians, bicyclists, equestrians

Managed uses: Pedestrians, bicyclists, equestrians

Approximate Length: 18.8 miles

Approximate Development Cost:
\$436,700



Stemple Pass.

Montana High Divide Trails Collaborative Recommendation

Red Mountain Addition Scapegoat Wilderness

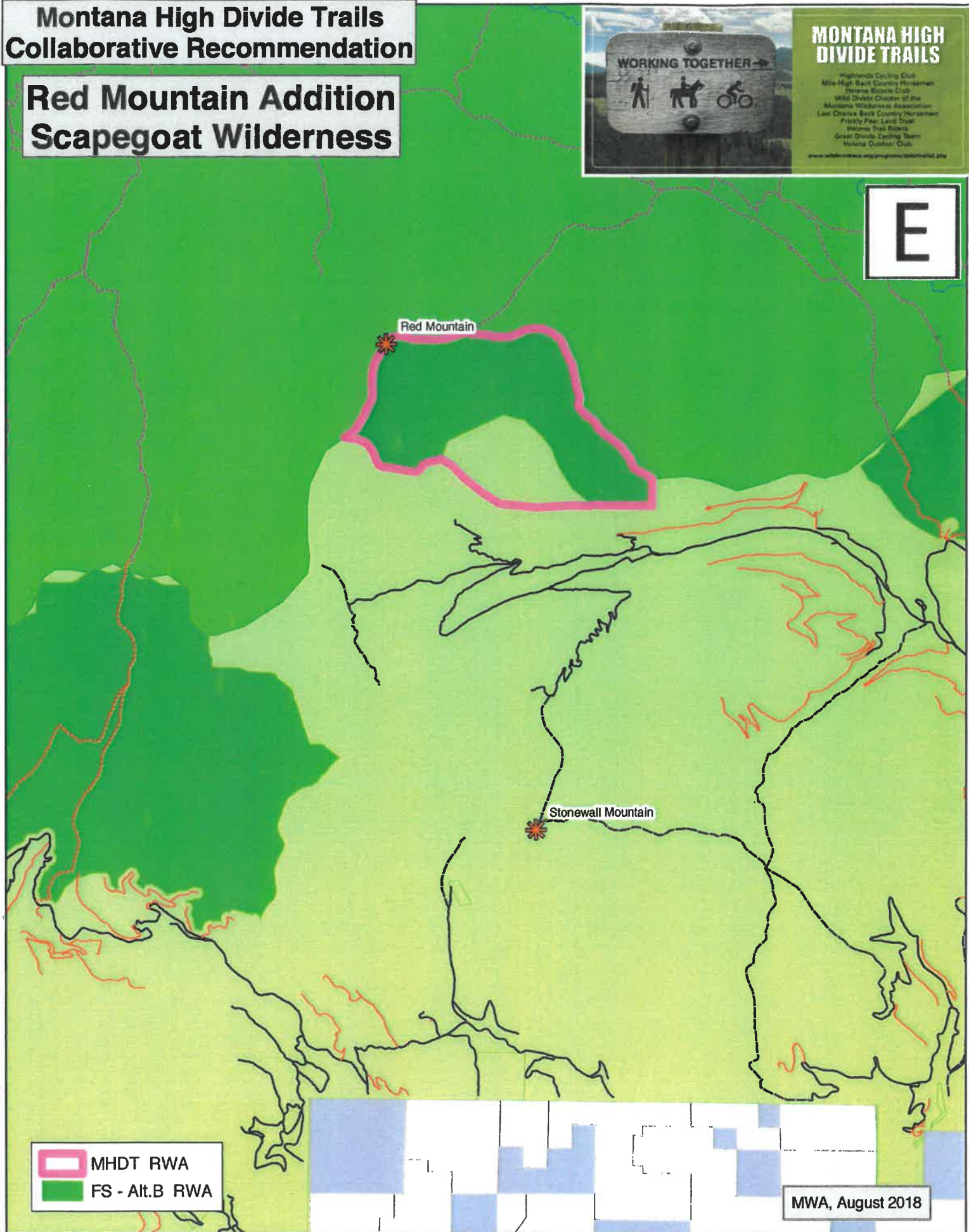


MONTANA HIGH DIVIDE TRAILS

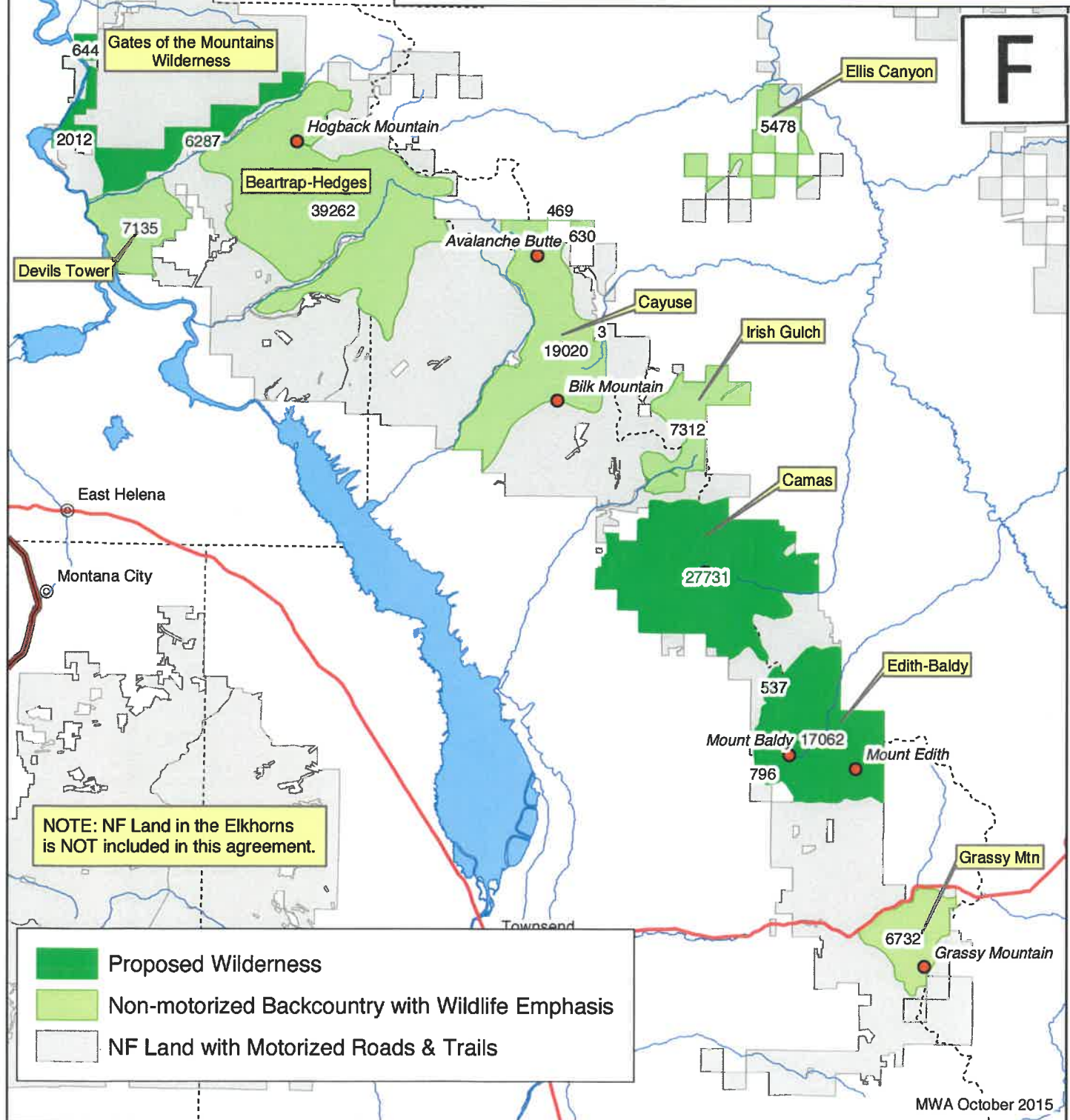
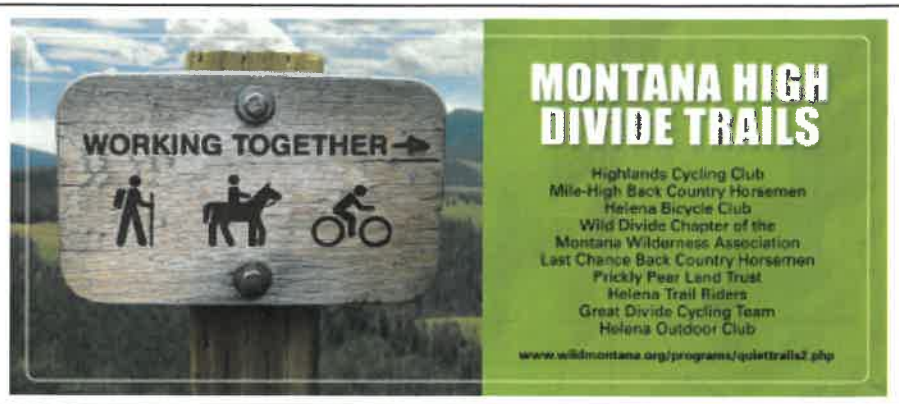
Highlands Cycling Club
Miss-High Back Country Horsemen
Jerome Back Country Club
Wild Divide Chapter of the
Montana Wilderness Association
Last Chance Back Country Horsemen
Paddy Peak Land Trust
Helena Trail Riders
Great Divide Cycling Team
Helena Outdoor Club

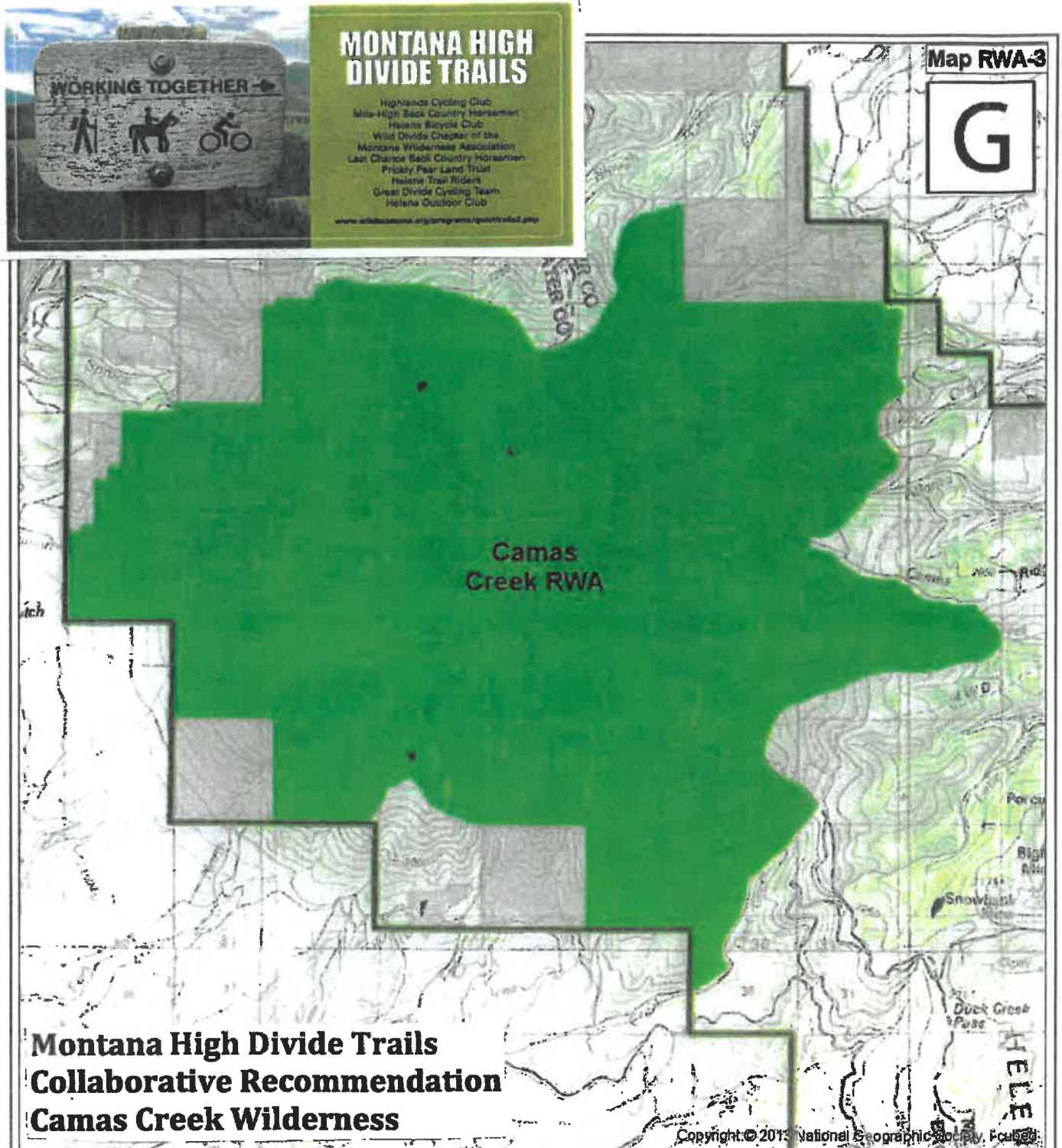
www.wilddividetrails.org/images/workingtogether.jpg

E



Big Belts Helena- Lewis & Clark National Forests





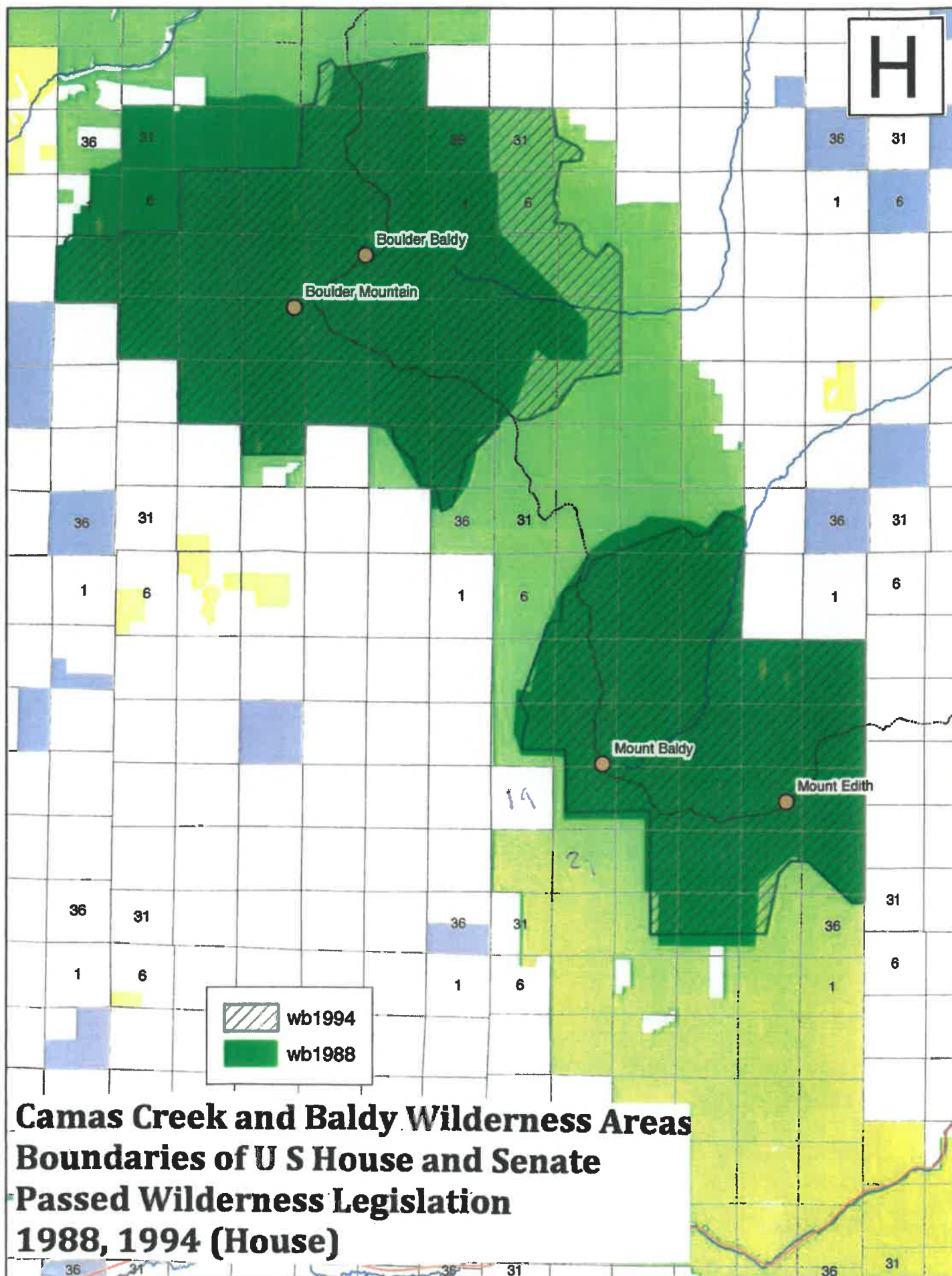
Camas Creek Recommended Wilderness Area Alternative D

- Forest Service Administrative Boundary
- Recommended Wilderness Area
- Non-National Forest System Land

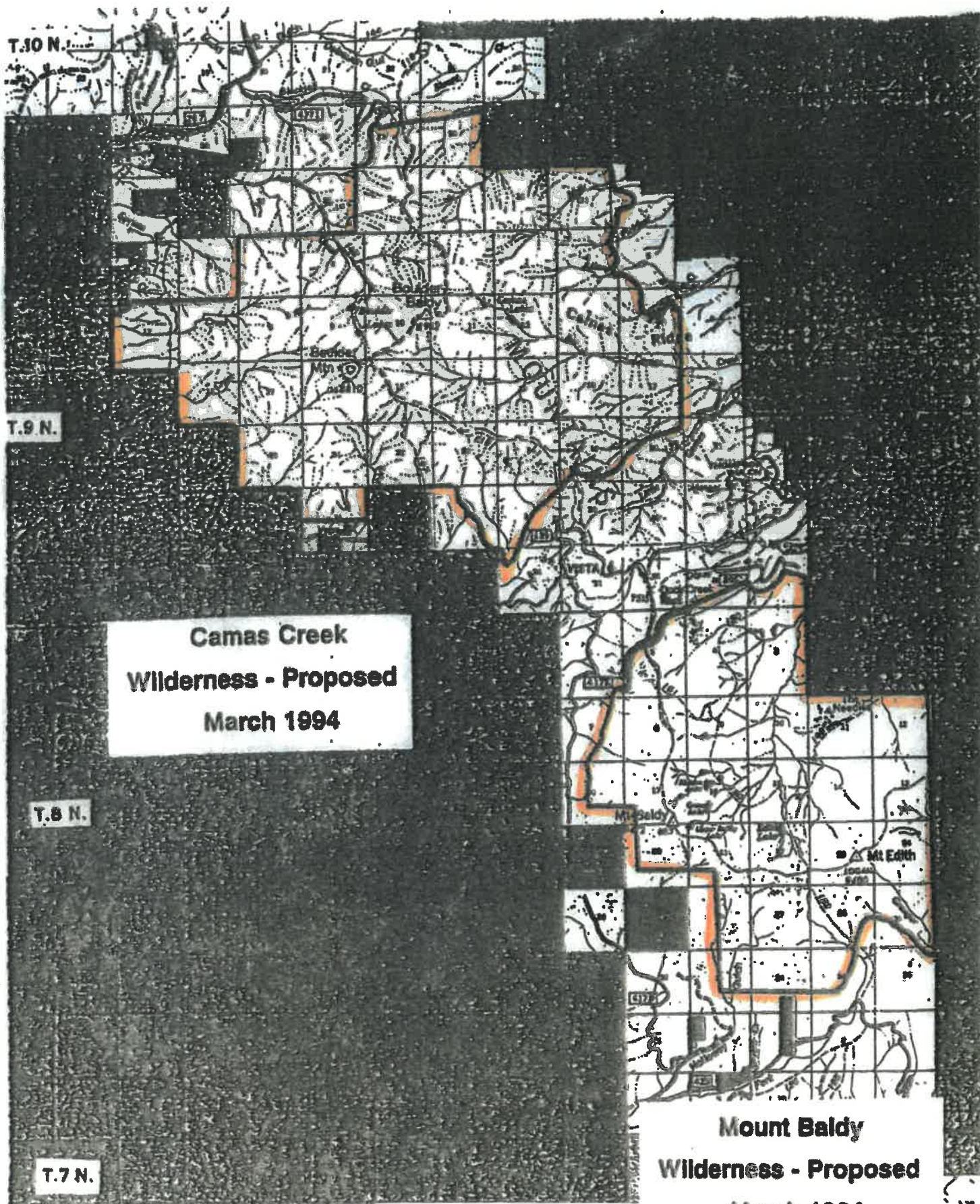
Helena - Lewis and Clark National Forest
 Forest Plan - Draft Environmental Impact Statement



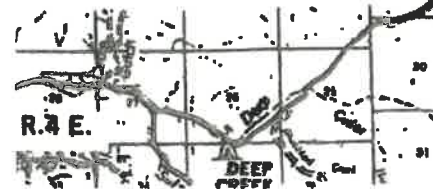
H



Camas Creek and Baldy Wilderness Areas
Boundaries of U S House and Senate
Passed Wilderness Legislation
1988, 1994 (House)

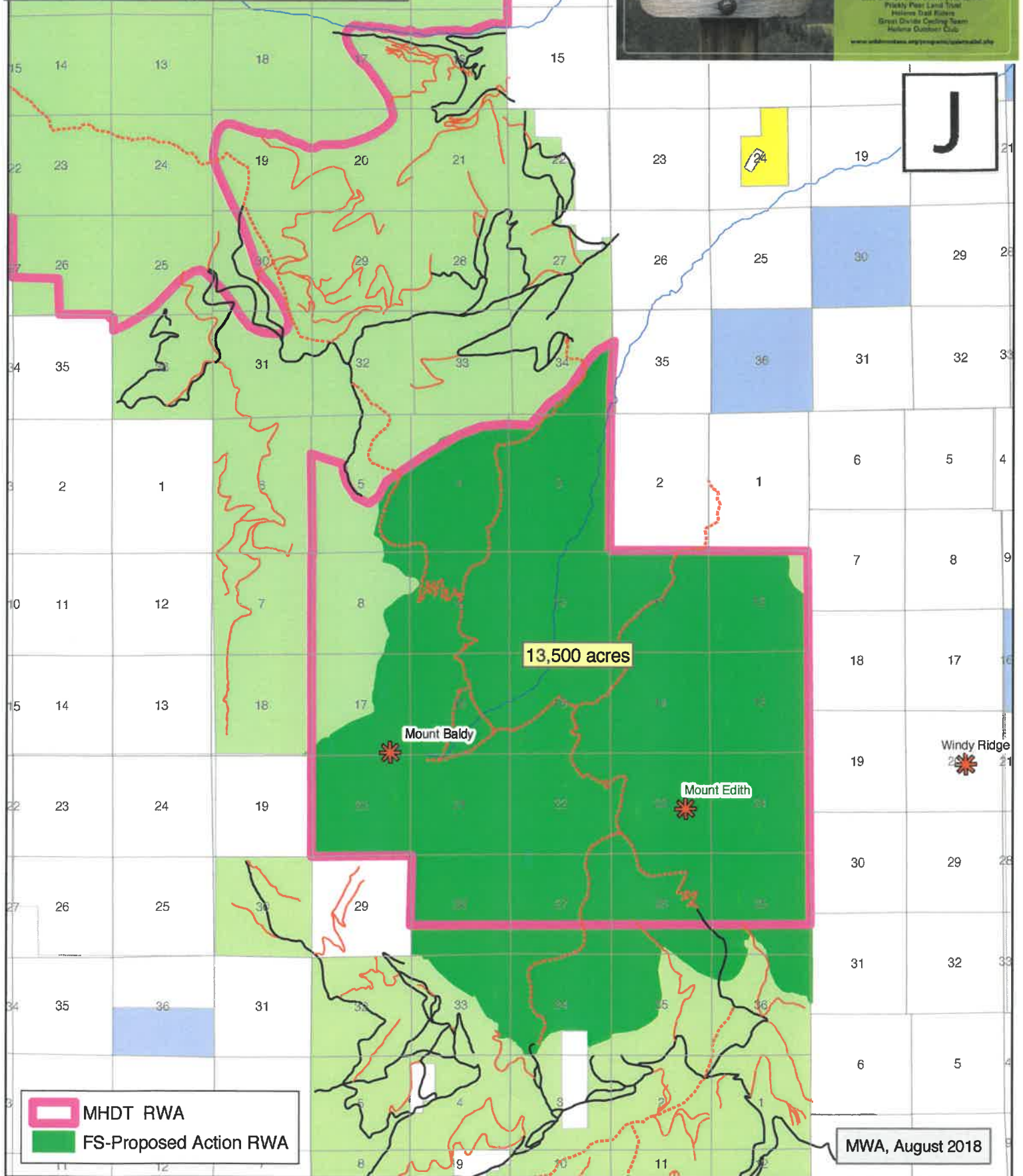


**Camas Creek and Baldy Wilderness Areas
Boundaries of U S House Passed
Montana Wilderness Legislation
1994**



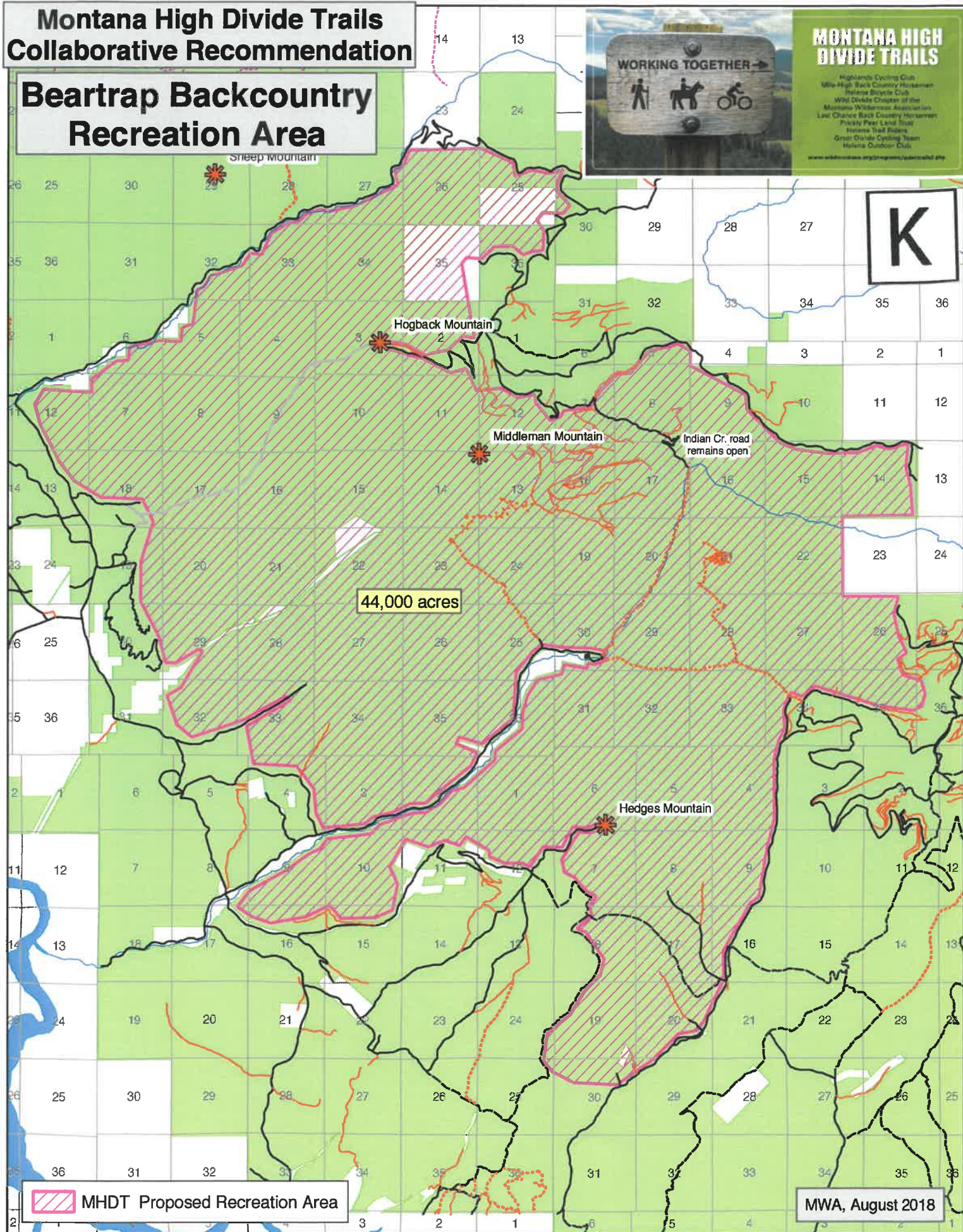
Montana High Divide Trails Collaborative Recommendation

Edith-Baldy Wilderness



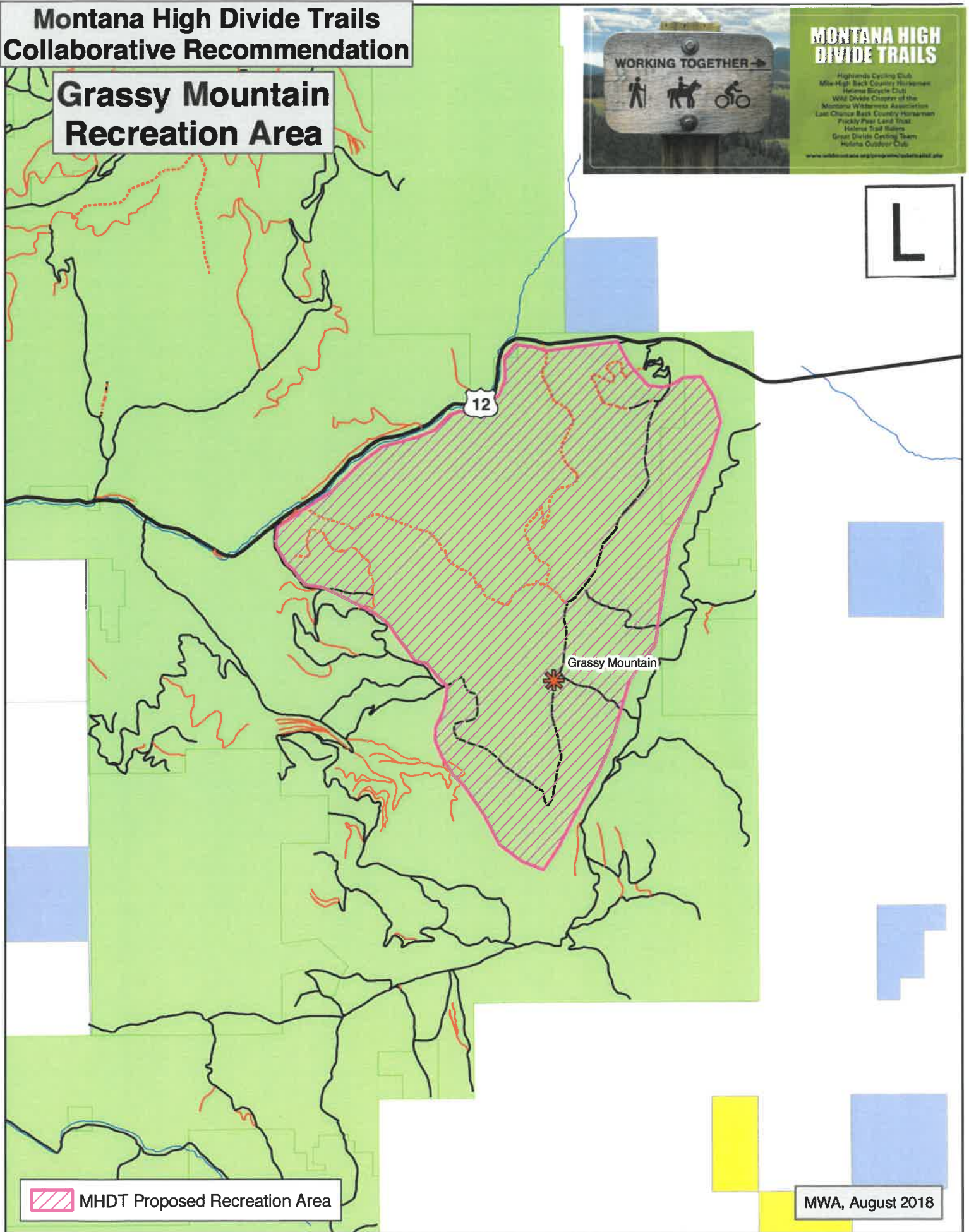
Montana High Divide Trails Collaborative Recommendation

Beartrap Backcountry Recreation Area



Montana High Divide Trails Collaborative Recommendation

Grassy Mountain Recreation Area





File Code: 2820

Date: July 20, 1998



Oil & Gas Leasing EIS Record of Decision

Hello,

Enclosed is the summary of the Final Supplemental Environmental Impact Statement (FSEIS) for oil and gas leasing on the Helena National Forest and Elkhorn Mountains portion of the Deerlodge National Forest together with the accompanying Record of Decision.

This decision is made with Forest Service and Bureau of Land Management authority. As Supervisor of the Helena National Forest, I am responsible for deciding which national forest lands will be made available for leasing and under what conditions. The BLM is responsible for issuing the actual leases on national forest lands and on private lands with federal minerals within national forest boundaries. The rationale for the decisions outlined within the Record of Decision reflects both agencies positions.

It has been nearly two years since the initial decision on oil and gas leasing on the Helena National Forest and the Elkhorn Mountain portion of the Deerlodge National Forest was issued and withdrawn. Since that time, further cumulative effects analysis has been completed and is included in this supplemental EIS.

Although my original decision provided stewardship for the natural resources on national forest lands, I have used the past two years to listen and to learn more about those resources. Parts of my decision remain the same; however, in some instances I have added additional requirements or chosen to make lands unavailable for leasing in order to provide additional protection to natural resources and features.

In short, the decision to allow oil and gas leasing includes several key points.

The area of the Rocky Mountain Front from Highway 200 north to the Lewis and Clark National Forest boundary, taking in the Alice Creek drainage east to the Helena National Forest boundary, will be available for leasing only through a 'no surface occupancy' (NSO) stipulation. This means that no ground disturbing activity can occur. I believe this condition affords the greatest protection to grizzly bear and wolf habitat, bull trout, and the historic Native American trail followed by members of the Lewis and Clark Expedition. If resources are developed on private land adjacent to national forest lands, the NSO leases provide the Forest Service the ability to recoup dollars for oil or gas drained from beneath national forest lands. Together with lease revenues, this would provide financial benefit to the United States treasury, the State of Montana, and Lewis and Clark County (see page 7 of the Record of Decision for more detail).





The Elkhorn Mountains will be unavailable for lease. I believe that the high public interest in wildlife and recreation and the low potential for oil and gas development in the Elkhorns warrants this protection.

The municipal watersheds for Helena (Ten Mile Creek) and East Helena (McClellan Creek) will be unavailable for lease under this decision.

The Black Mountain area will be included in the NSO stipulation outlined in the earlier decision for the Mount Helena area. This will tie together the Ten Mile watershed and the popular Mount Helena park to create a large area for recreational use, free of surface development.

This decision includes a NSO stipulation that will protect small but critical areas of mountain goat habitat across the Forest.

The U.S. Fish and Wildlife Service is proposing to list the Canada lynx as a threatened species in the contiguous United States under the Endangered Species Act. Canada lynx are found on portions of the Helena National Forest. Implementation of the leasing decision is not likely to jeopardize the continued existence of the Canada lynx or result in destruction or adverse modification of proposed critical habitat.

On June 10, 1998 the USFWS announced that the Upper Columbia River Basin bull trout are listed as a threatened species under the Endangered Species Act effective on July 10, 1998. Upper Columbia River Basin bull trout are found in portions of the Helena National Forest. I will not implement my decision to authorize the Bureau of Land Management to offer specific lands for lease on those national forest system lands where the Upper Columbia River Basin bull trout are found until the Forest Service completes its responsibilities under Section 7 of the Endangered Species Act.

I encourage you to review the summary and the Record of Decision. If you would like more detail on the analysis than is provided in the summary, please request the complete FSEIS from Tom Andersen at (406) 449-5201, ext 277. Mr. Andersen can also answer any questions you might have. Thank you.

Sincerely,

THOMAS J. CLIFFORD
Forest Supervisor

Enclosure: FSEIS Summary and ROD