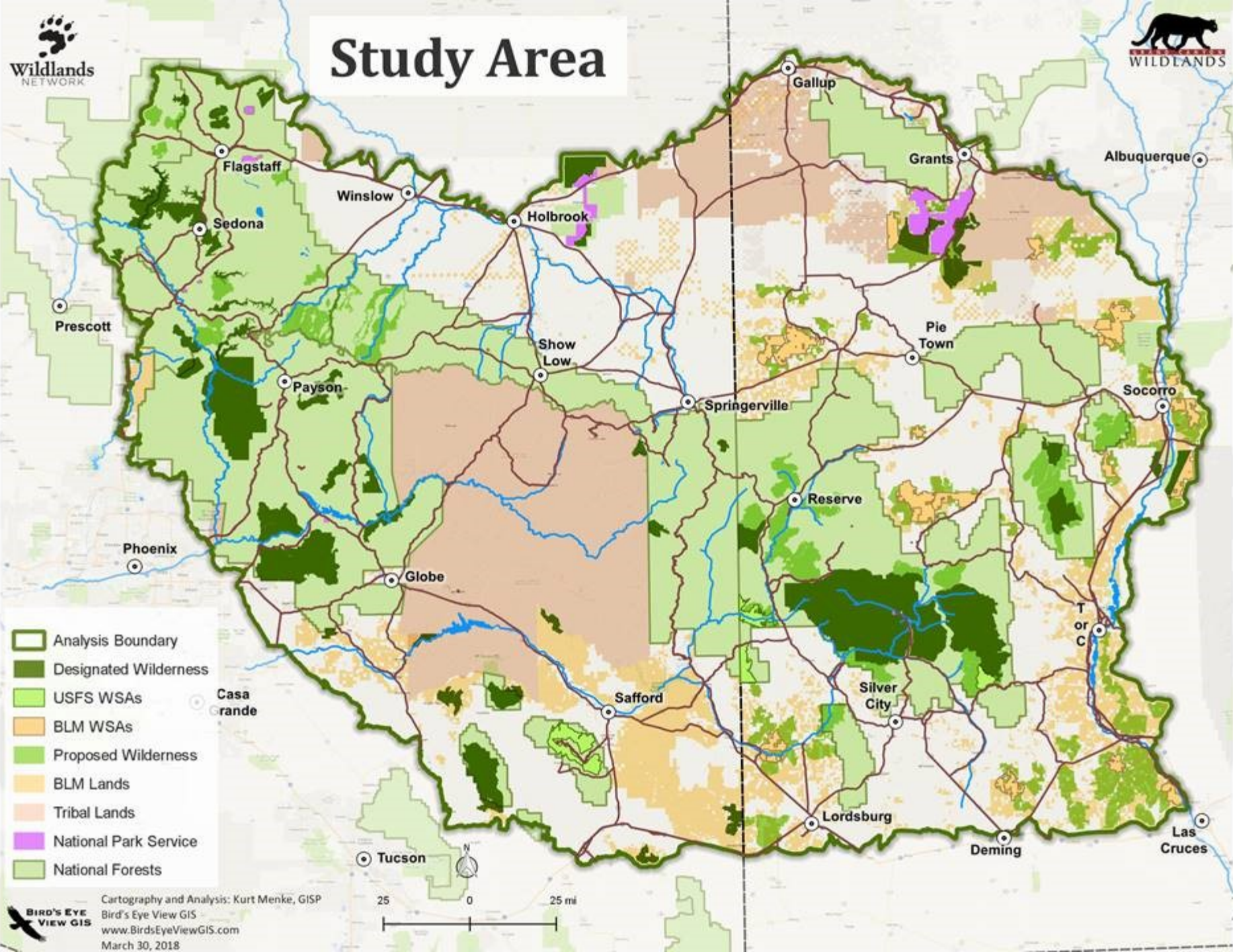
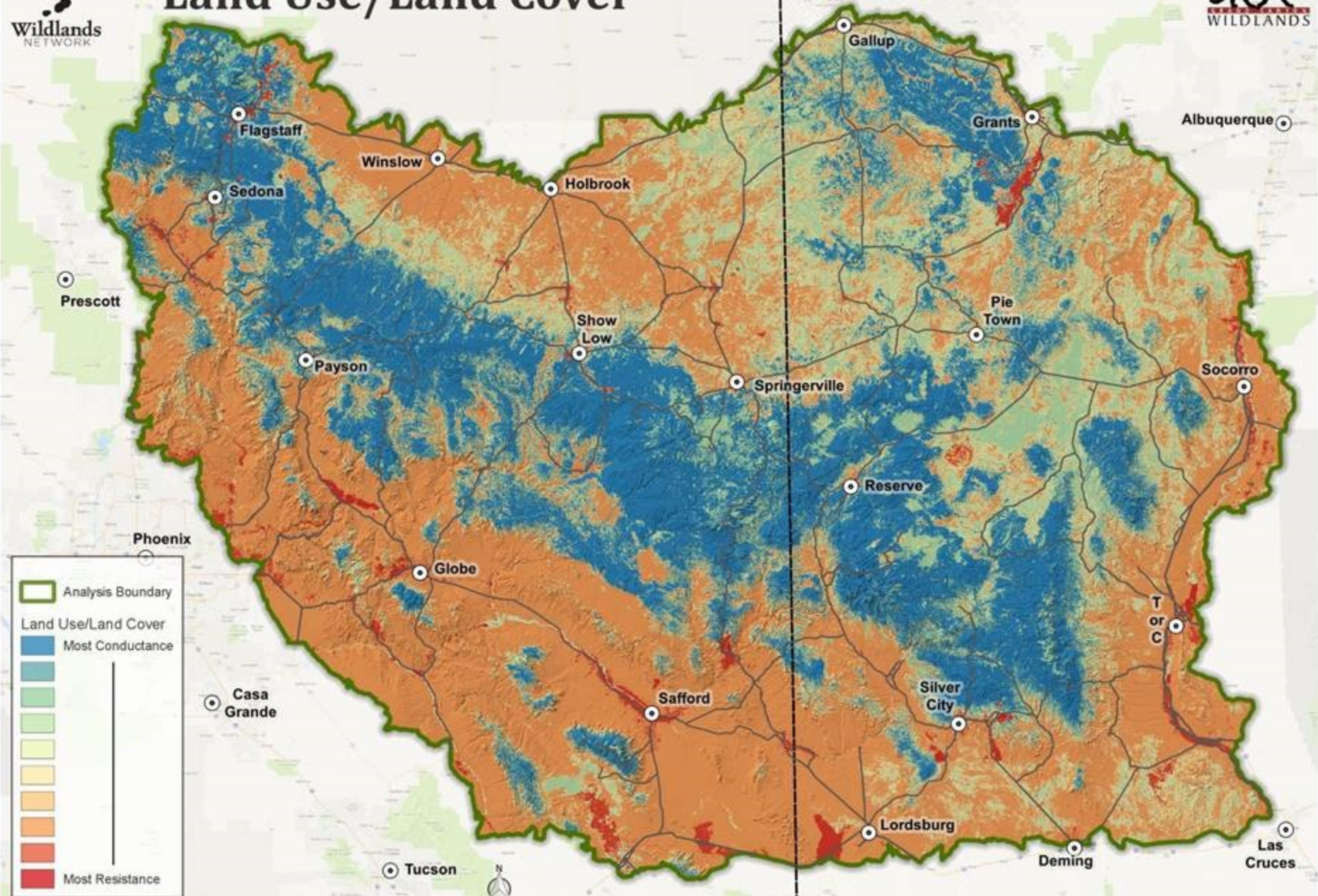


Study Area



-  Analysis Boundary
-  Designated Wilderness
-  USFS WSAs
-  BLM WSAs
-  Proposed Wilderness
-  BLM Lands
-  Tribal Lands
-  National Park Service
-  National Forests

Land Use/Land Cover



Analysis Boundary

Land Use/Land Cover

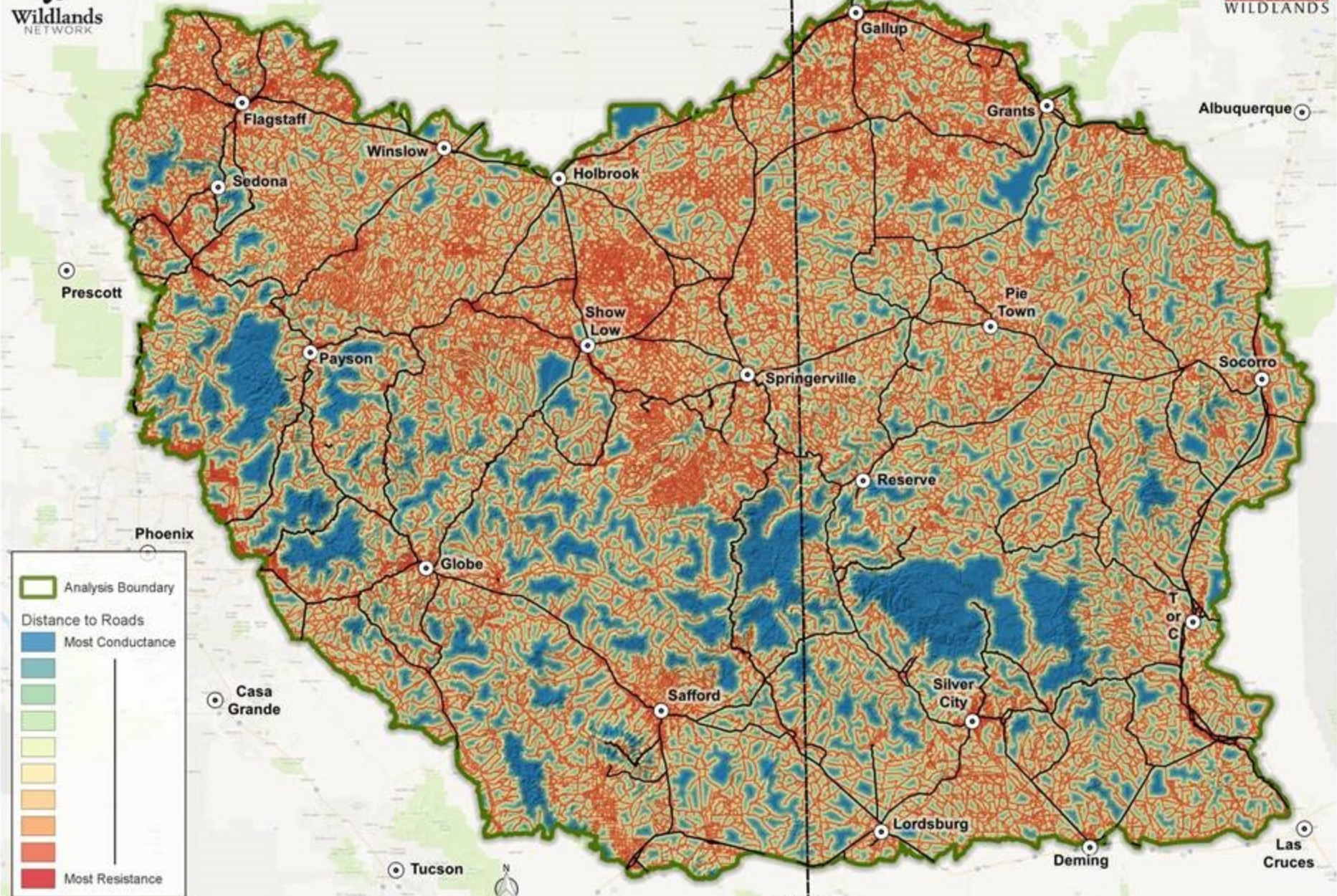
- Most Conductance
-
-
-
-
-
-
-
-
- Most Resistance

BIRD'S EYE VIEW GIS
Cartography and Analysis: Kurt Menke, GISP
Bird's Eye View GIS
www.BirdsEyeViewGIS.com
March 30, 2018



AZ NM

Distance to Roads



Analysis Boundary

Distance to Roads

Most Conductance

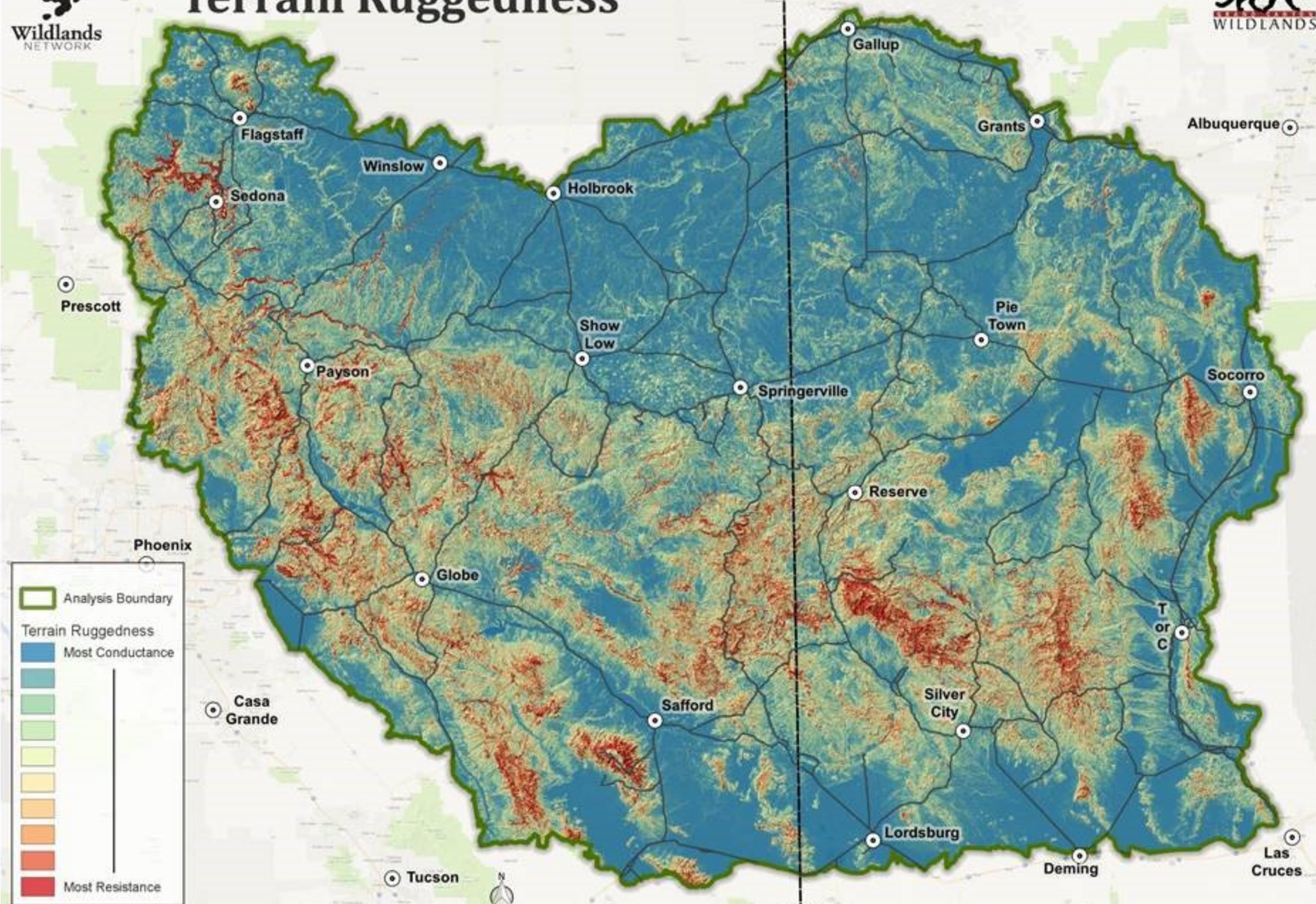
Most Resistance

Cartography and Analysis: Kurt Menke, GISP
Bird's Eye View GIS
www.BirdsEyeViewGIS.com
March 30, 2018



AZ NM

Terrain Ruggedness

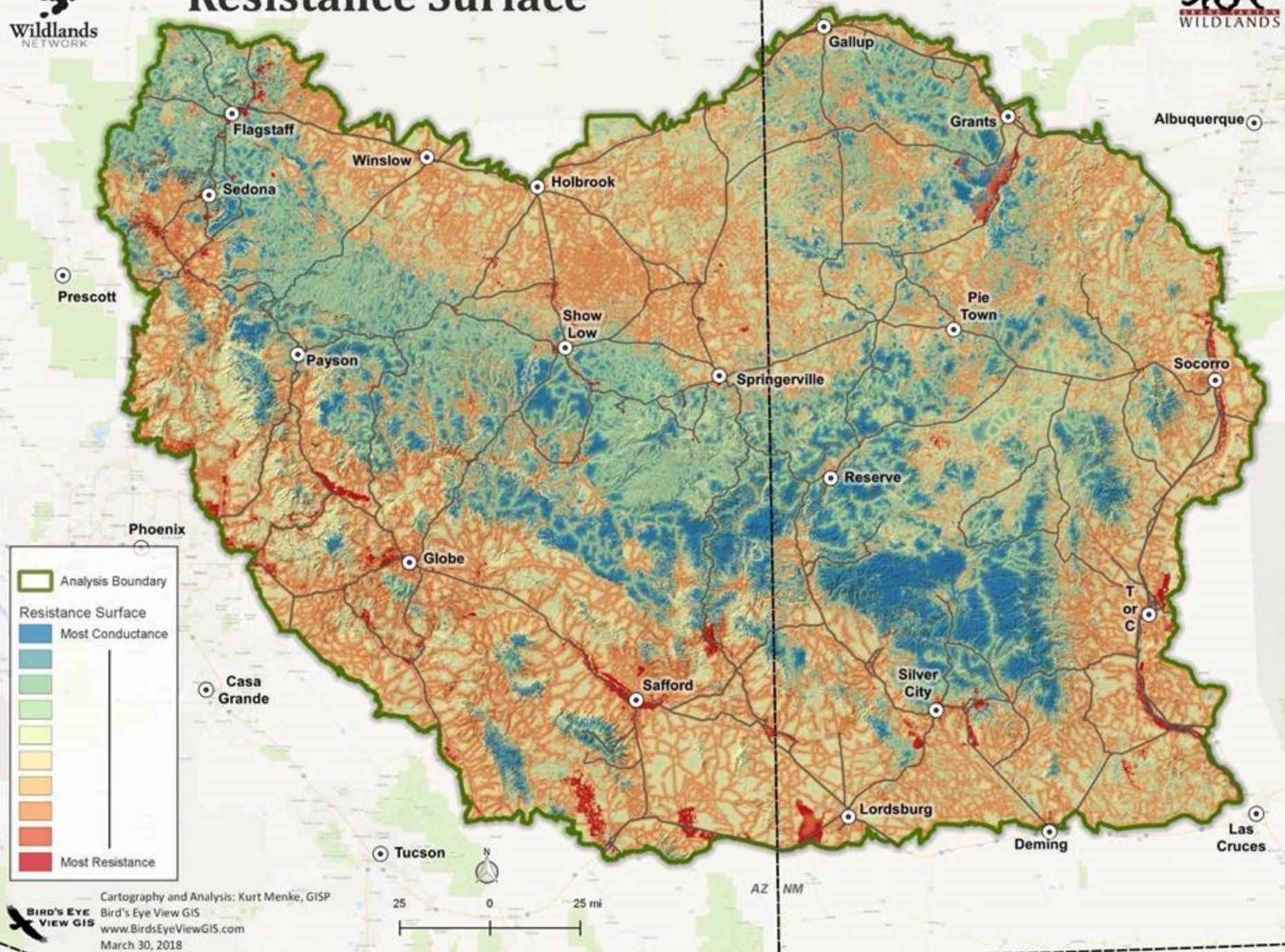


Cartography and Analysis: Kurt Menke, GISP
Bird's Eye View GIS
www.BirdsEyeViewGIS.com
March 30, 2018

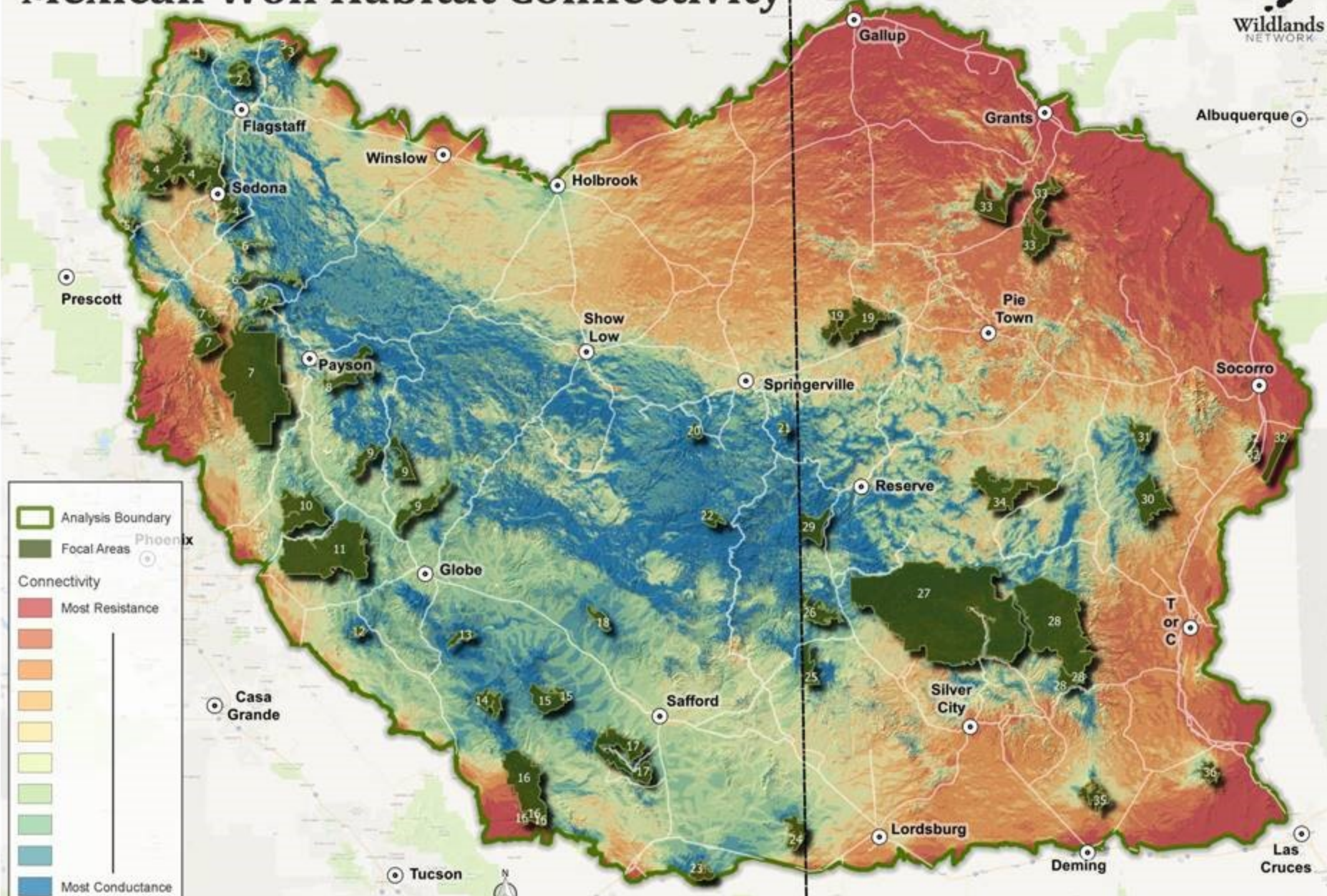


AZ NM

Resistance Surface



Mexican Wolf Habitat Connectivity



Analysis Boundary
Green outline

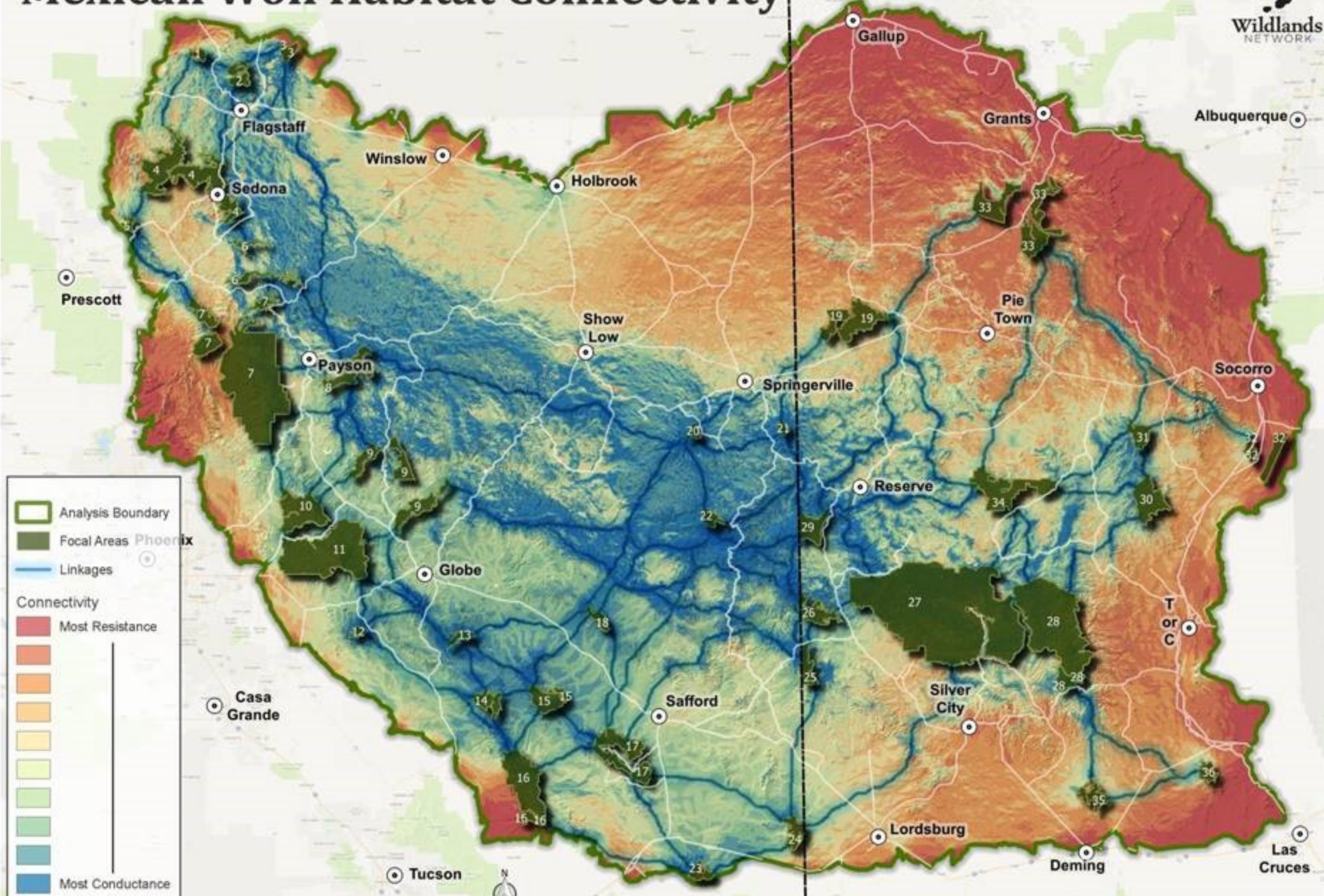
Focal Areas
Dark green polygons

Connectivity

- Most Resistance (Red)
- Most Conductance (Blue)



Mexican Wolf Habitat Connectivity

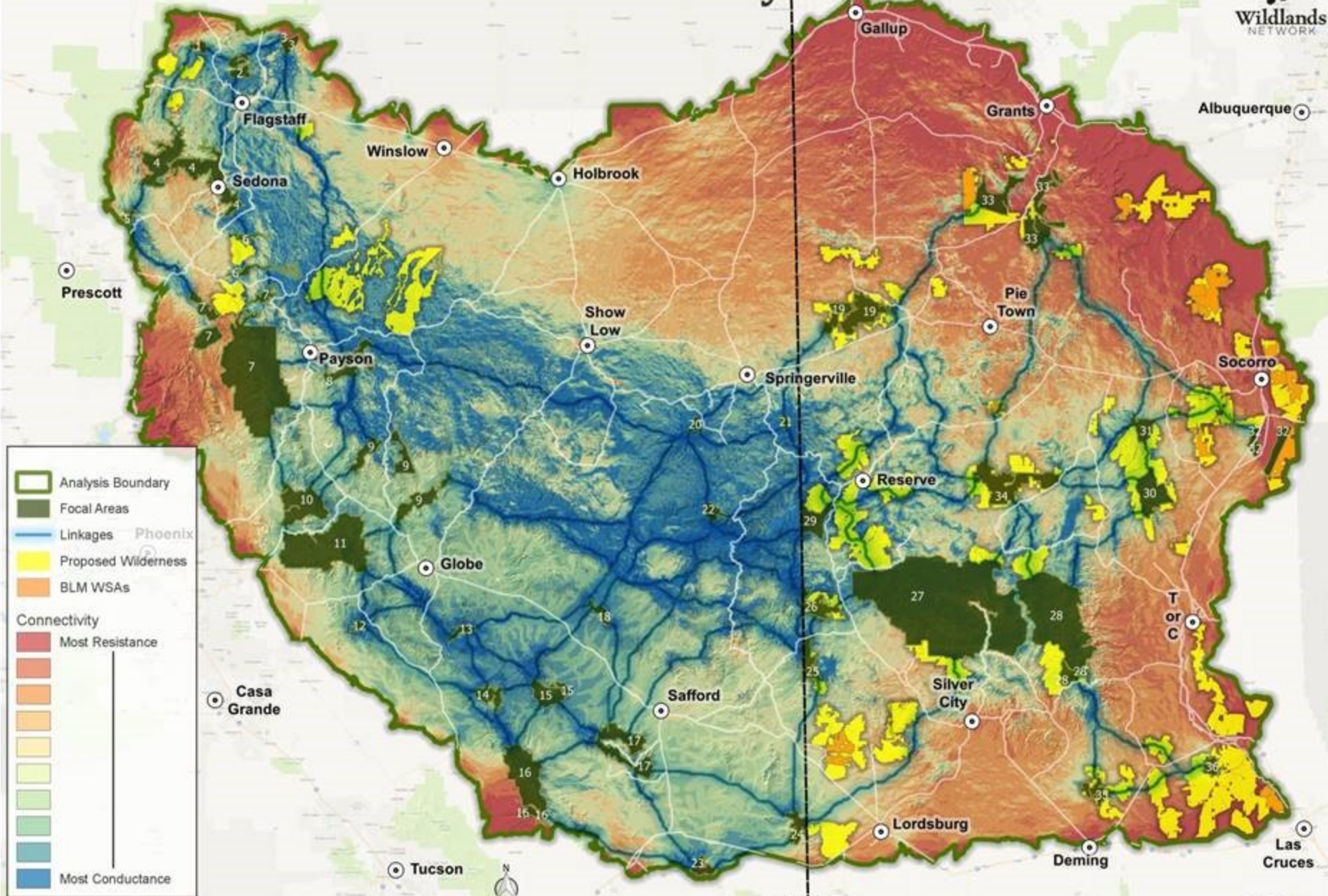


Analysis Boundary
Focal Areas Phoenix
Linkages

Connectivity

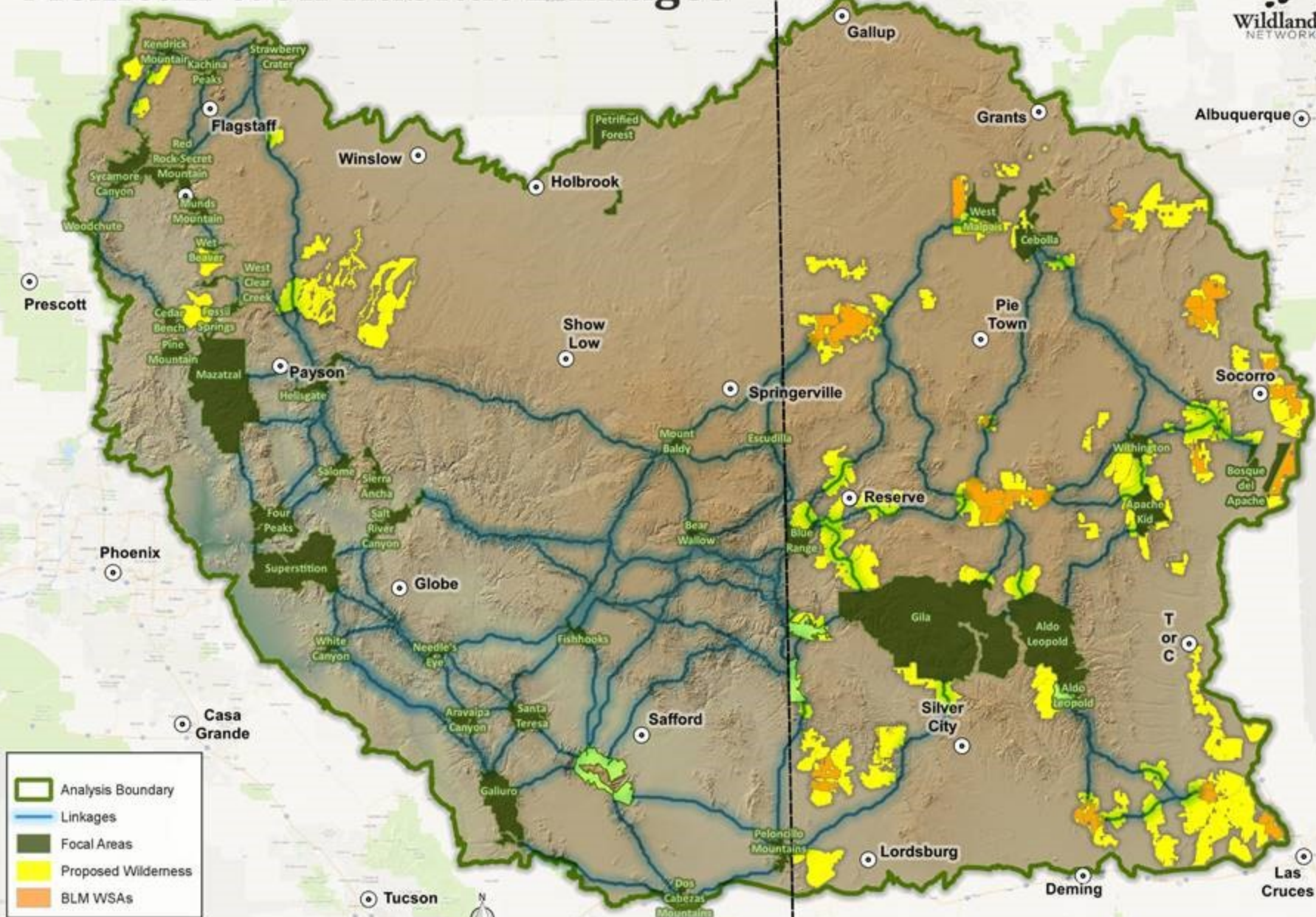
- Most Resistance
- Most Conductance

Mexican Wolf Habitat Connectivity

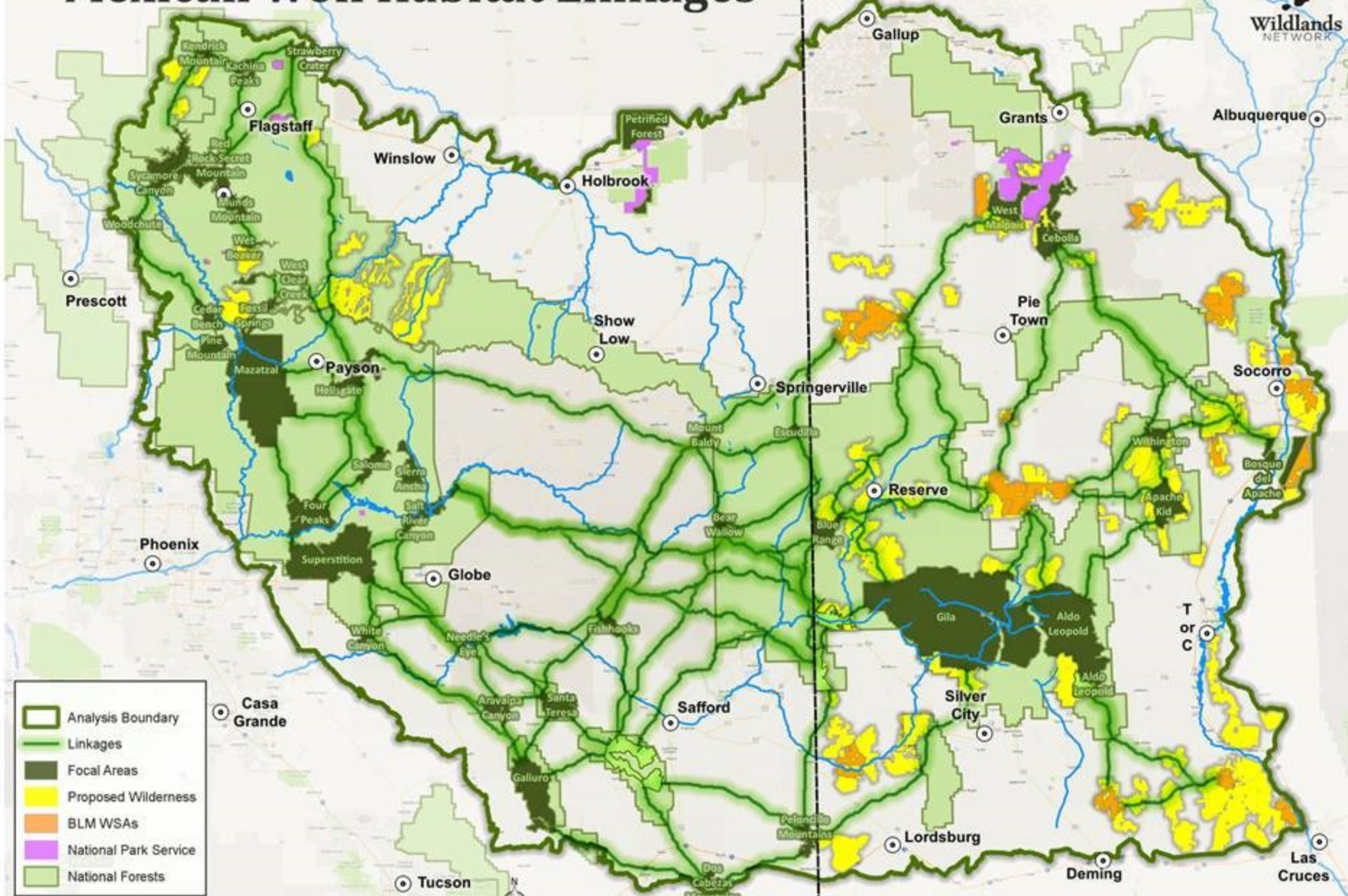


- Analysis Boundary
 - Focal Areas
 - Linkages
 - Proposed Wilderness
 - BLM WSAs
- Connectivity
- Most Resistance
 - Most Conductance

Mexican Wolf Habitat Linkages



Mexican Wolf Habitat Linkages



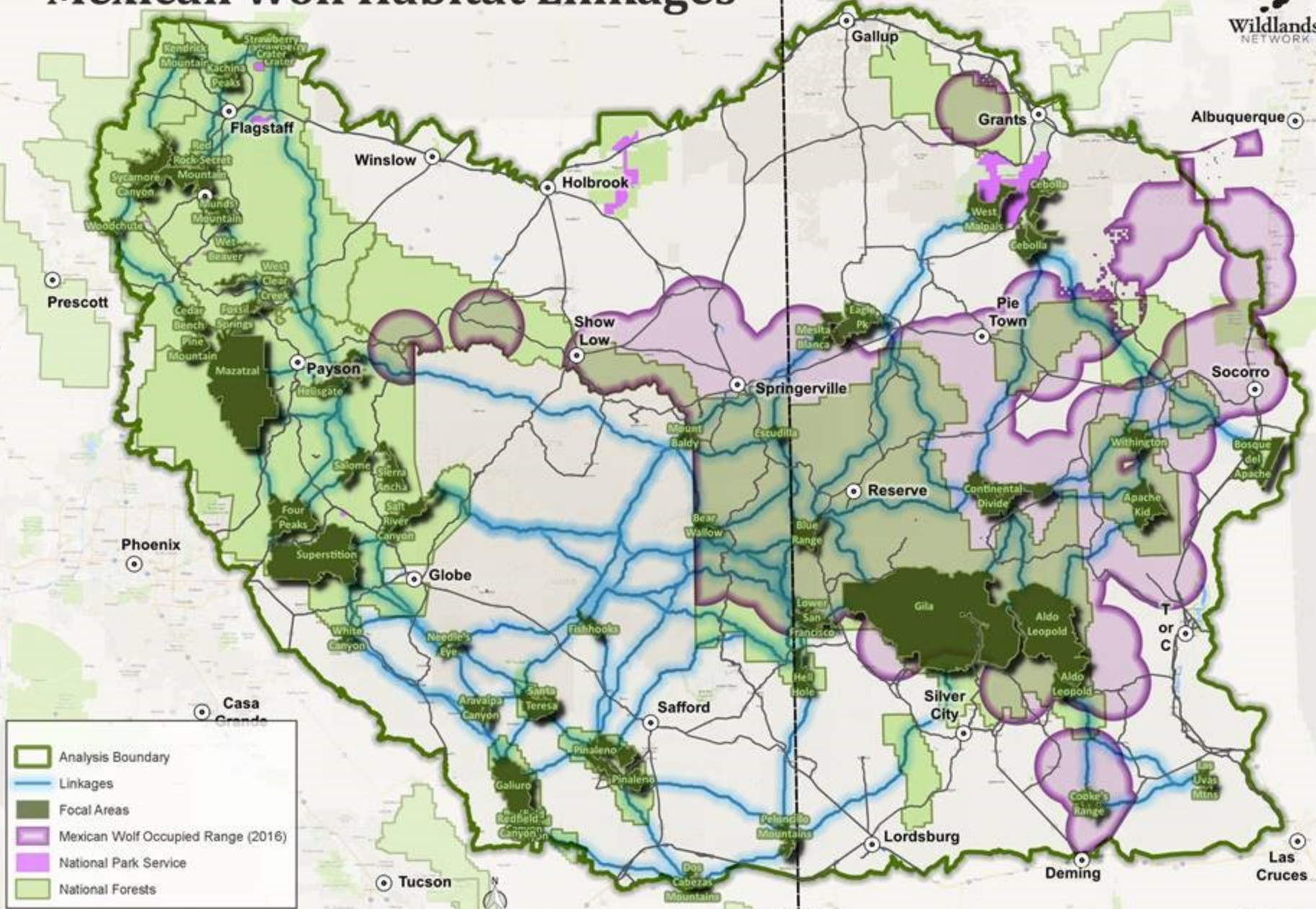
Cartography and Analysis: Kurt Menke, GIS
Bird's Eye View GIS
www.BirdsEyeViewGIS.com
March 30, 2018

25 0 25 mi

AZ NM



Mexican Wolf Habitat Linkages



Legend

- Analysis Boundary
- Linkages
- Focal Areas
- Mexican Wolf Occupied Range (2016)
- National Park Service
- National Forests

Cartography and Analysis: Kurt Menke, GISP
 Bird's Eye View GIS
 www.BirdsEyeViewGIS.com
 March 30, 2018



AZ NM