

**Modified Alternative B
(Proposed by Alaska
Snowmachiners)**

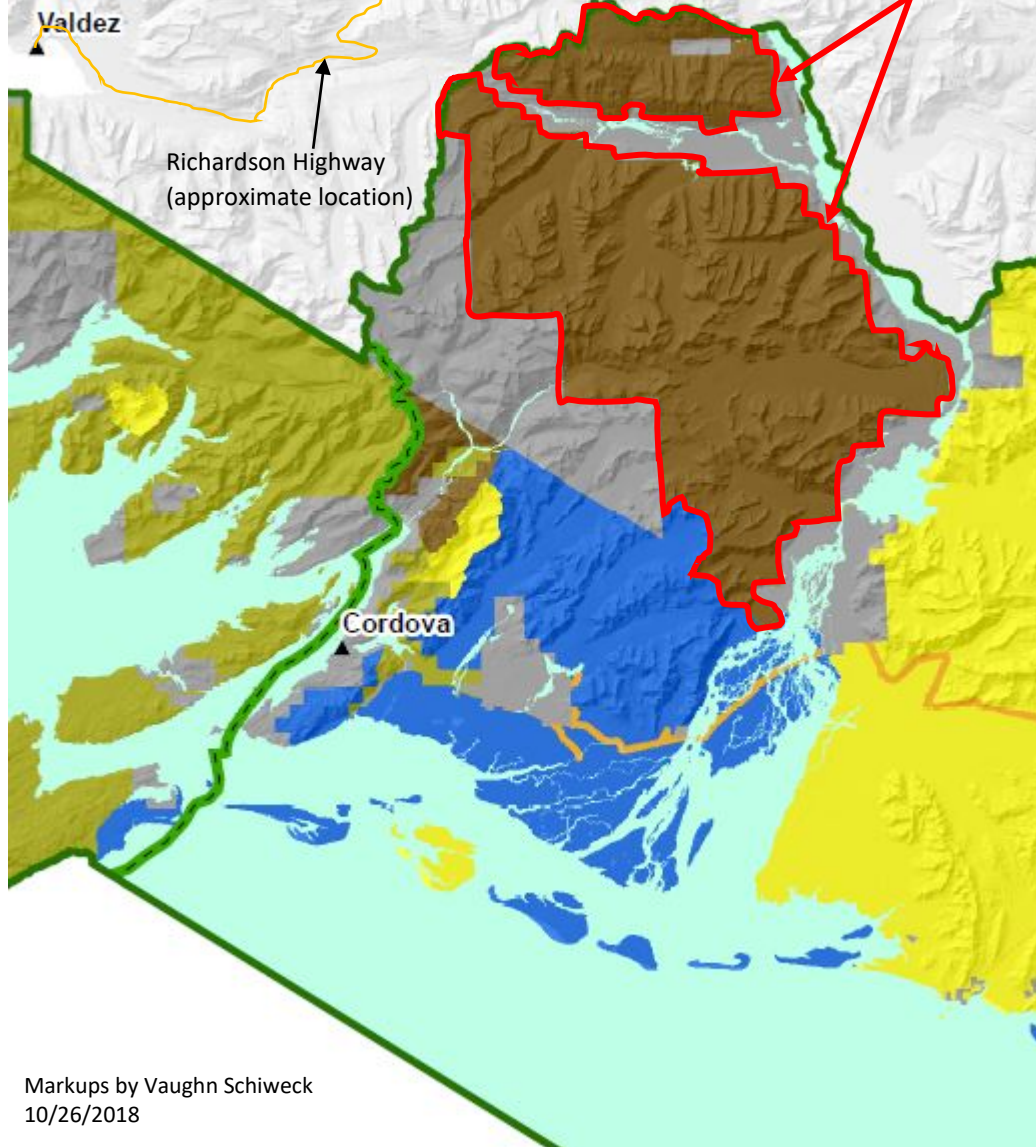








Table 8. Applicable managerial recreation opportunity spectrum

	Recreation Opportunity Spectrum Class	Surface Access¹	Air and Water Access¹
	Primitive	Nonmotorized, primitive trails, foot, horseback	Kayaks, canoes, motorboats, airplanes
	Semiprimitive nonmotorized	Nonmotorized, developed trails, foot, horseback, bicycles	Kayaks, canoes, motorboats, airplanes
	Semiprimitive nonmotorized (winter motorized allowed)	Nonmotorized summer, developed trails foot, horseback, bicycles, snowmachines	Kayaks, canoes, motorboats, airplanes, helicopter landings (winter only)
	Semiprimitive motorized	Motorized, snowmachines, off-highway vehicles, developed trails, foot, horseback, bicycles	Kayaks, canoes, motorboats, all aircraft
	Roaded natural	Motorized, off-highway vehicles, snowmachines, developed trails and roads, foot, horseback, bicycles	Kayaks, canoes, motorboats, all aircraft
	Rural	All types	All types

Markups by Vaughn Schiweck 10/26/2018