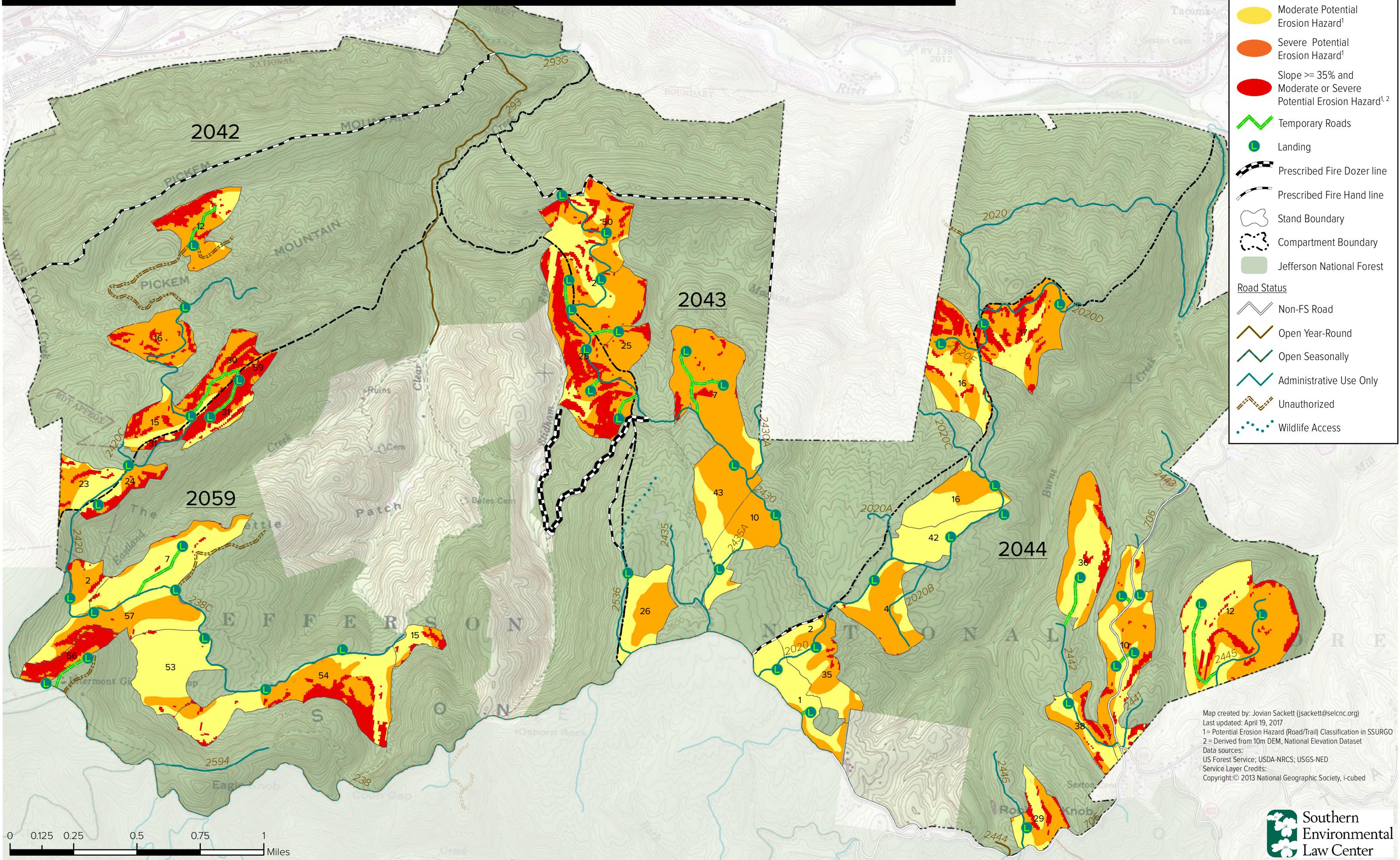


Nettle Patch: Potential Soil Erosion and Steep Slope Hazard in Stands Proposed for Timber Harvest



LEGEND

- Moderate Potential Erosion Hazard¹
- Severe Potential Erosion Hazard¹
- Slope \geq 35% and Moderate or Severe Potential Erosion Hazard^{1,2}
- Temporary Roads
- Landing
- Prescribed Fire Dozer line
- Prescribed Fire Hand line
- Stand Boundary
- Compartment Boundary
- Jefferson National Forest

Road Status

- Non-FS Road
- Open Year-Round
- Open Seasonally
- Administrative Use Only
- Unauthorized
- Wildlife Access

Map created by: Jovian Sackett (jsackett@selcnc.org)
 Last updated: April 19, 2017
 1 = Potential Erosion Hazard (Road/Trail) Classification in SSURGO
 2 = Derived from 10m DEM, National Elevation Dataset
 Data sources:
 US Forest Service; USDA-NRCS; USGS-NED
 Service Layer Credits:
 Copyright: © 2013 National Geographic Society, I-cubed

