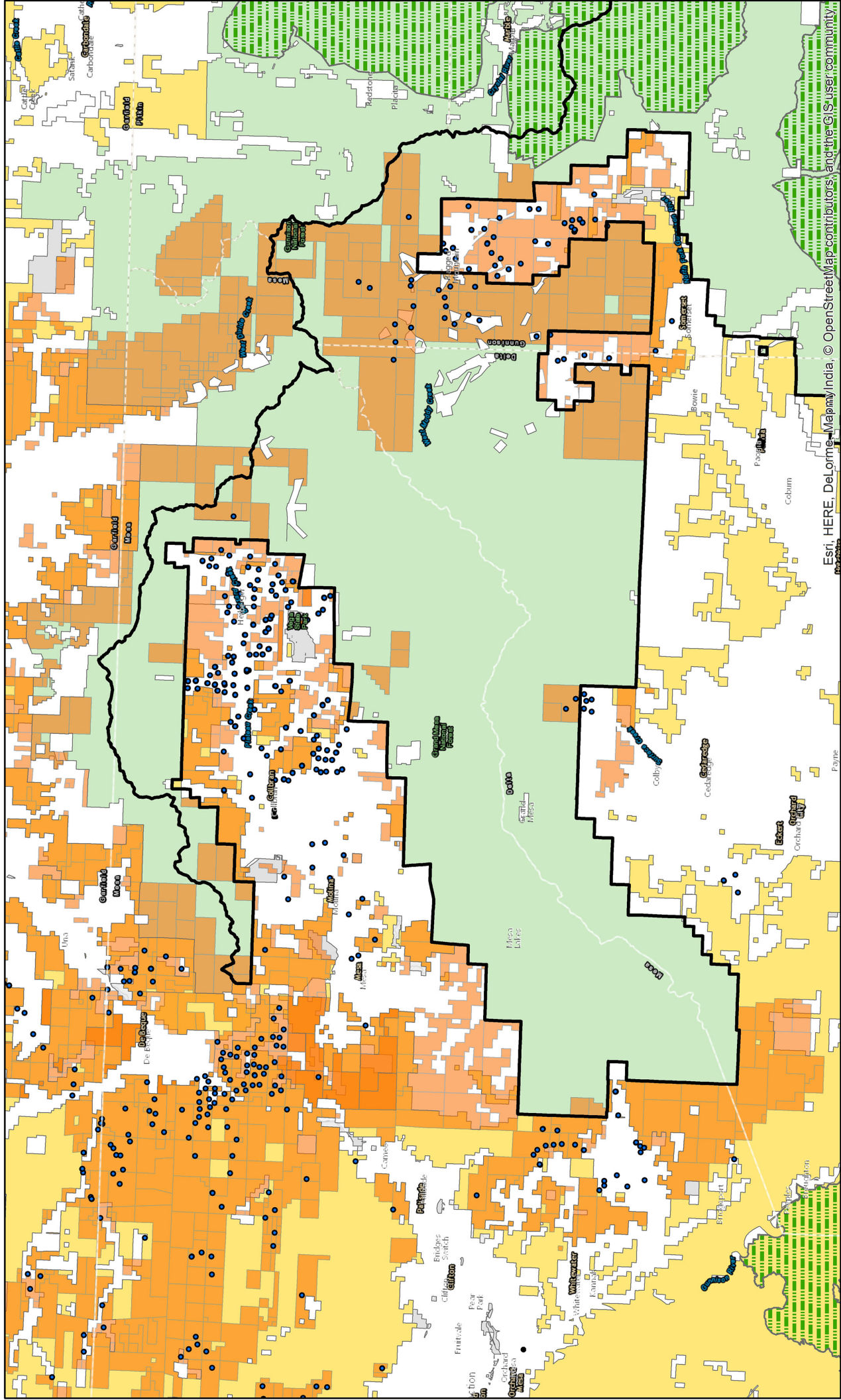


Land Ownership and Oil & Gas Development



GMUG Forest Boundaries
 US Forest Service
 Bureau of Land Management
 Private
 O&G Leases

Active O&G Wells
 CO Wilderness

US Fish and Wildlife Service
 National Park Service
 Other State, Federal, and Local

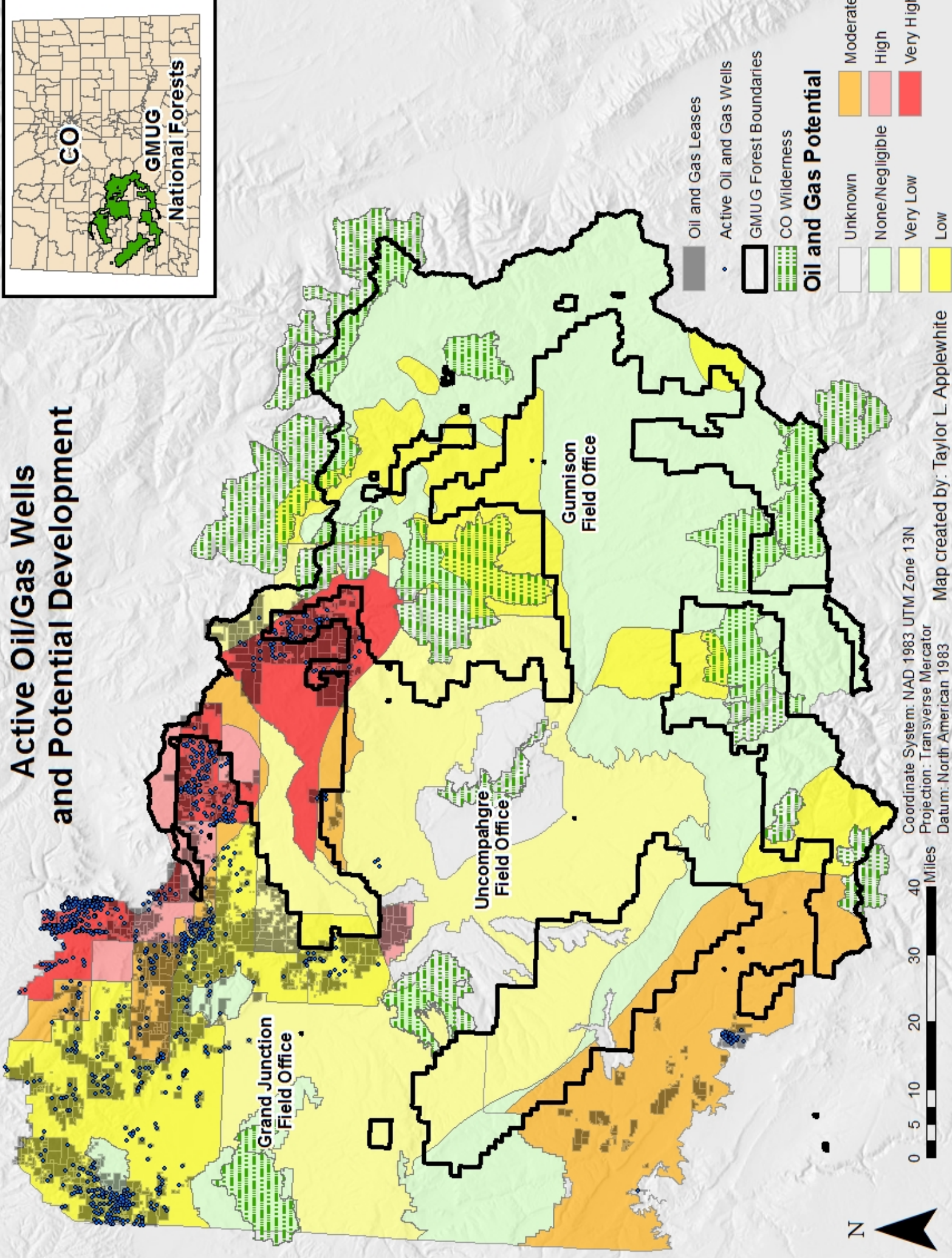
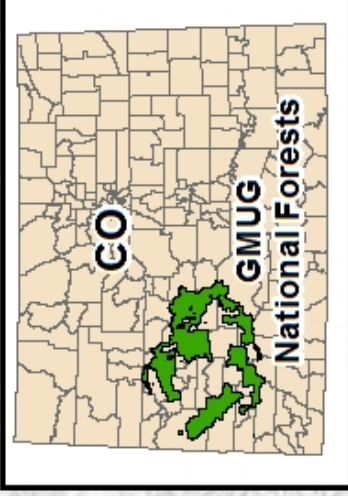
Esri, HERE, DeLorme, MapmyIndia, © OpenStreetMap contributors, and the GIS user community

Coordinate System: NAD 1983 UTM Zone 13N
 Projection: Transverse Mercator
 Datum: North American 1983
 Cartography By: Taylor L. Applewhite

0 2.5 5 10 15 20 Miles

N

Active Oil/Gas Wells and Potential Development



Oil and Gas Leases

Active Oil and Gas Wells

GMUG Forest Boundaries

CO Wilderness

Oil and Gas Potential

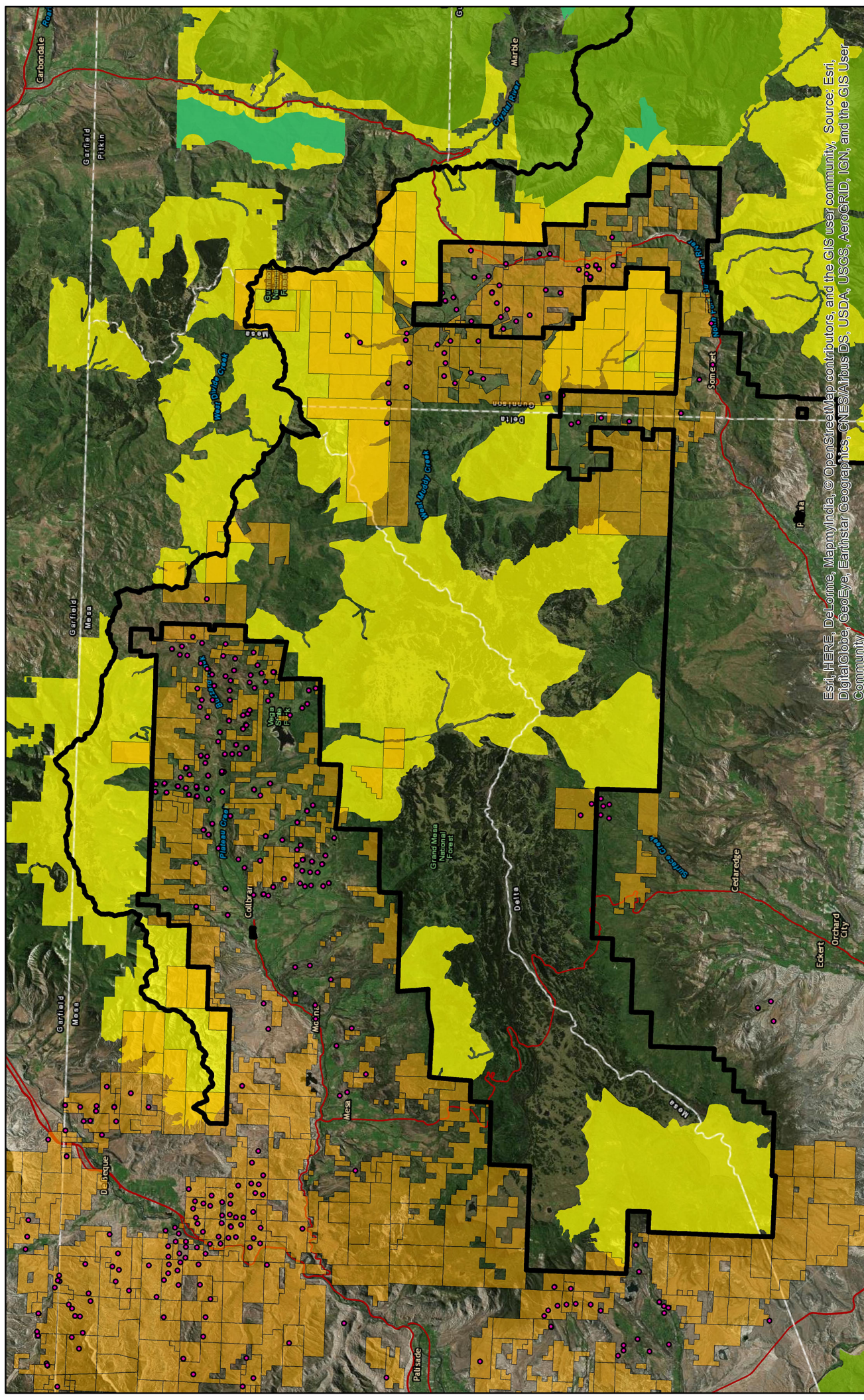
Unknown	Moderate
None/Negligible	High
Very Low	Very High
Low	

Coordinate System: NAD 1983 UTM Zone 13N
 Projection: Transverse Mercator
 Datum: North American 1983

0 5 10 20 30 40 Miles

Map created by: Taylor L. Appleswhite

GMUG Protected Areas in Proximity to Oil & Gas Development



- GMUG Forest Boundaries
- Roadless Areas
- Active Oil and Gas Wells
- Major Highways
- Oil and Gas Leases
- CO Wilderness
- Roadless Rule Upper Tier

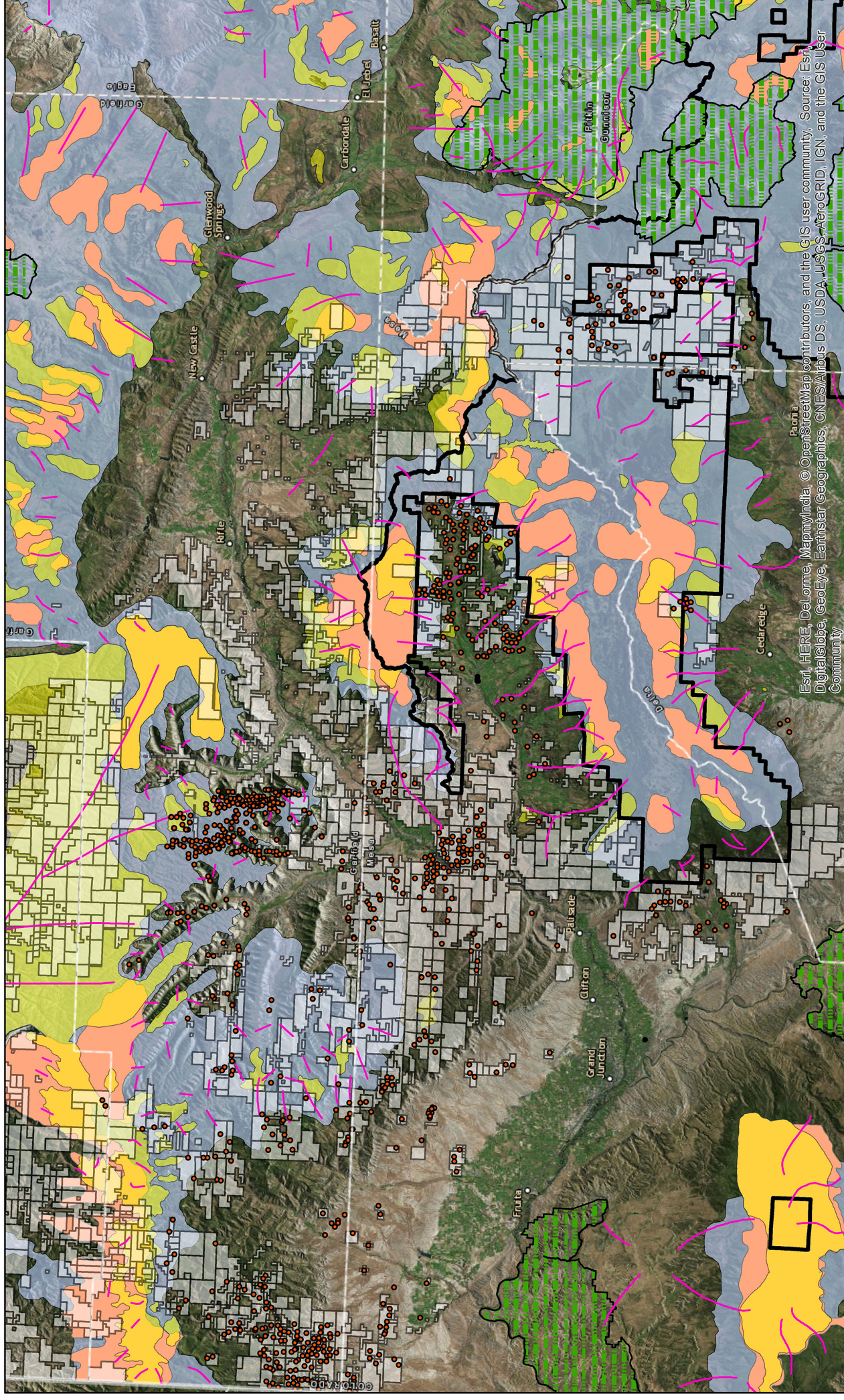


Cartography by: Taylor L. Applewhite

Coordinate System: NAD 1983 UTM Zone 13N
 Projection: Transverse Mercator
 Datum: North American 1983

ESRI, HERE, DeLorme, MapmyIndia, ©OpenStreetMap contributors, and the GIS user community. Source: Esri, DigitalGlobe, GeoEye, Earthstar Geographics, CNES/Airbus DS, USDA, USGS, AeroGRID, IGN, and the GIS User Community

Oil and Gas Development Near Elk Summer Habitat



	GMUG Forest Boundaries		General Migration Patterns
	CO Wilderness		Production Areas
	Active O&G Wells		Summer Range
	O&G Leases		Summer Concentration Areas

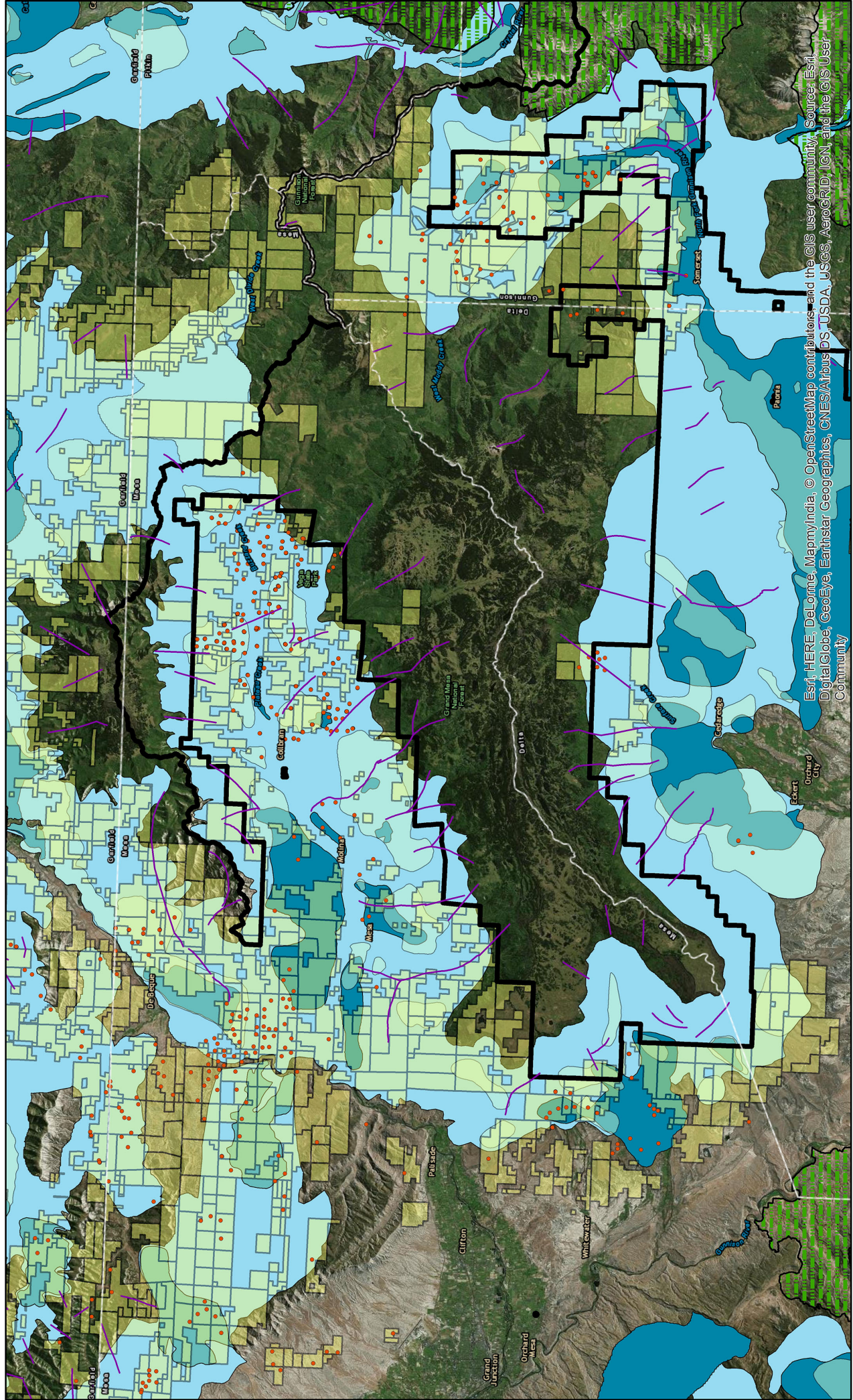


Coordinate System: NAD 1983 UTM Zone 13N
 Projection: Transverse Mercator
 Datum: North American 1983
 Units: Meter

Cartography By: Taylor L. Applewhite

Esri, HERE, DeLorme, MapmyIndia, ©OpenStreetMap contributors, and the GIS user community. Source: Esri, DigitalGlobe, GeoEye, Earthstar Geographics, CNES/Airbus DS, USDA, USGS, AeroGRID, IGN, and the GIS User Community

Oil and Gas Development Near Elk Winter Habitat



Legend:

- General Migration Patterns (purple line)
- Active O&G Wells (red dot)
- GMUG Forest Boundaries (black outline)
- O&G Leases (yellow)
- CO Wilderness (green with vertical lines)
- Winter Concentration Areas (light blue)
- Severe Winter Range (medium blue)
- Winter Range (lightest blue)

Scale: 0 2.5 5 10 15 20 Miles

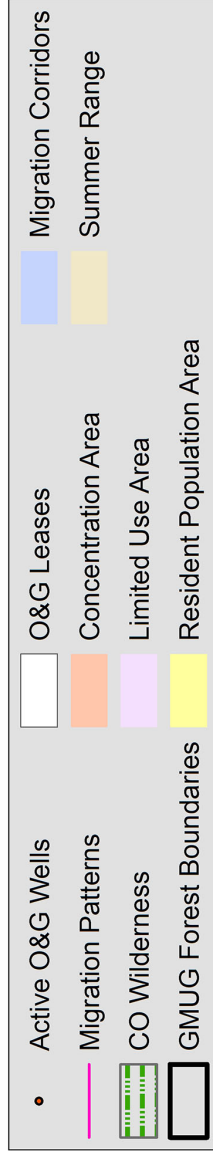
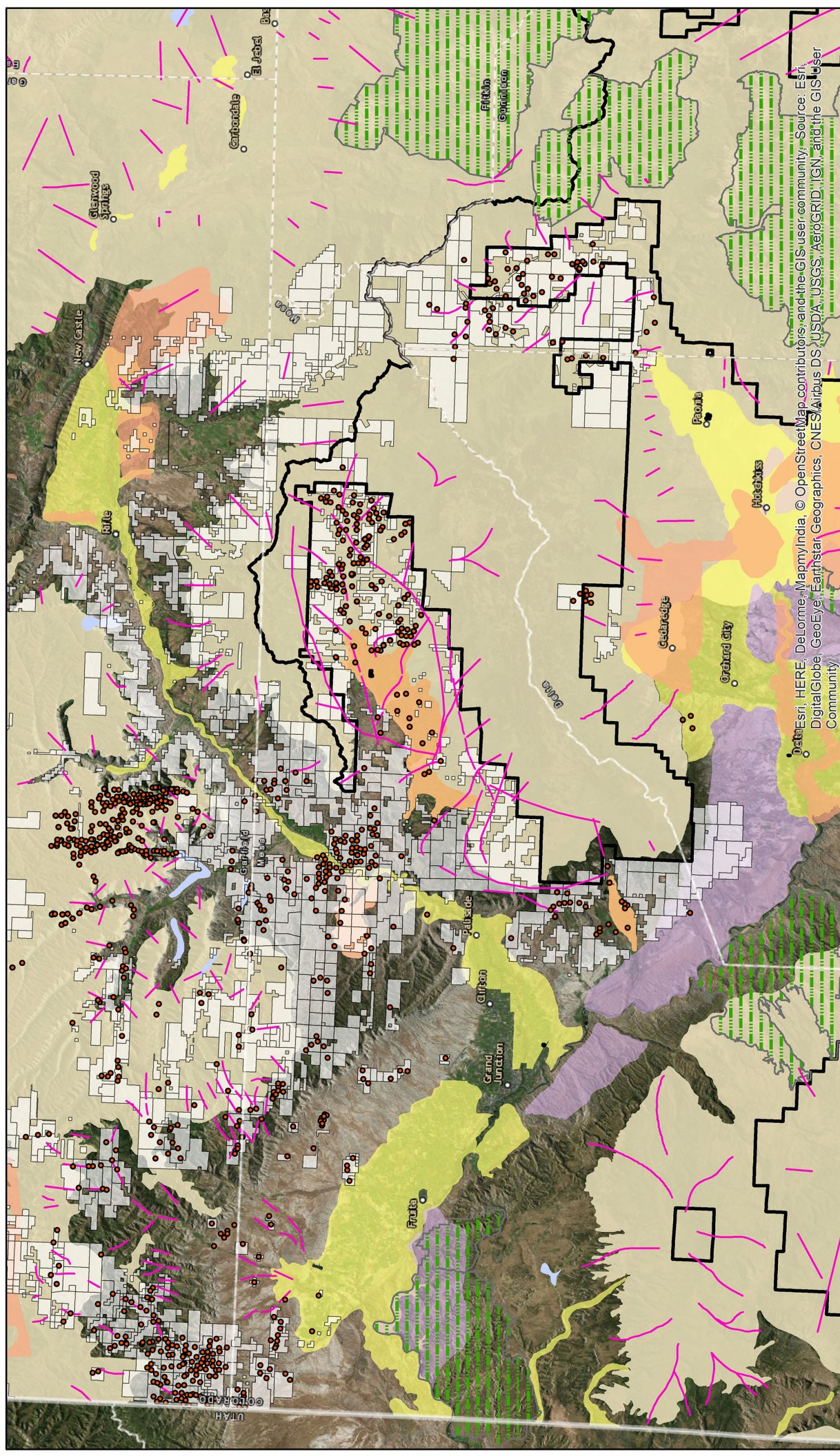
North Arrow: N

Coordinate System: NAD 1983 UTM Zone 13N
Projection: Transverse Mercator
Datum: North American 1983

Cartography By: Taylor L. Applewhite

Source: Esri, HERE, DeLorme, MapmyIndia, © OpenStreetMap contributors and the GIS user community. Source: Esri, DigitalGlobe, GeoEye, Earthstar Geographics, CNES/Airbus DS, USDA, USGS, AeroGRID, IGN, and the GIS User Community

Oil and Gas Development Near Mule Deer Summer Habitat



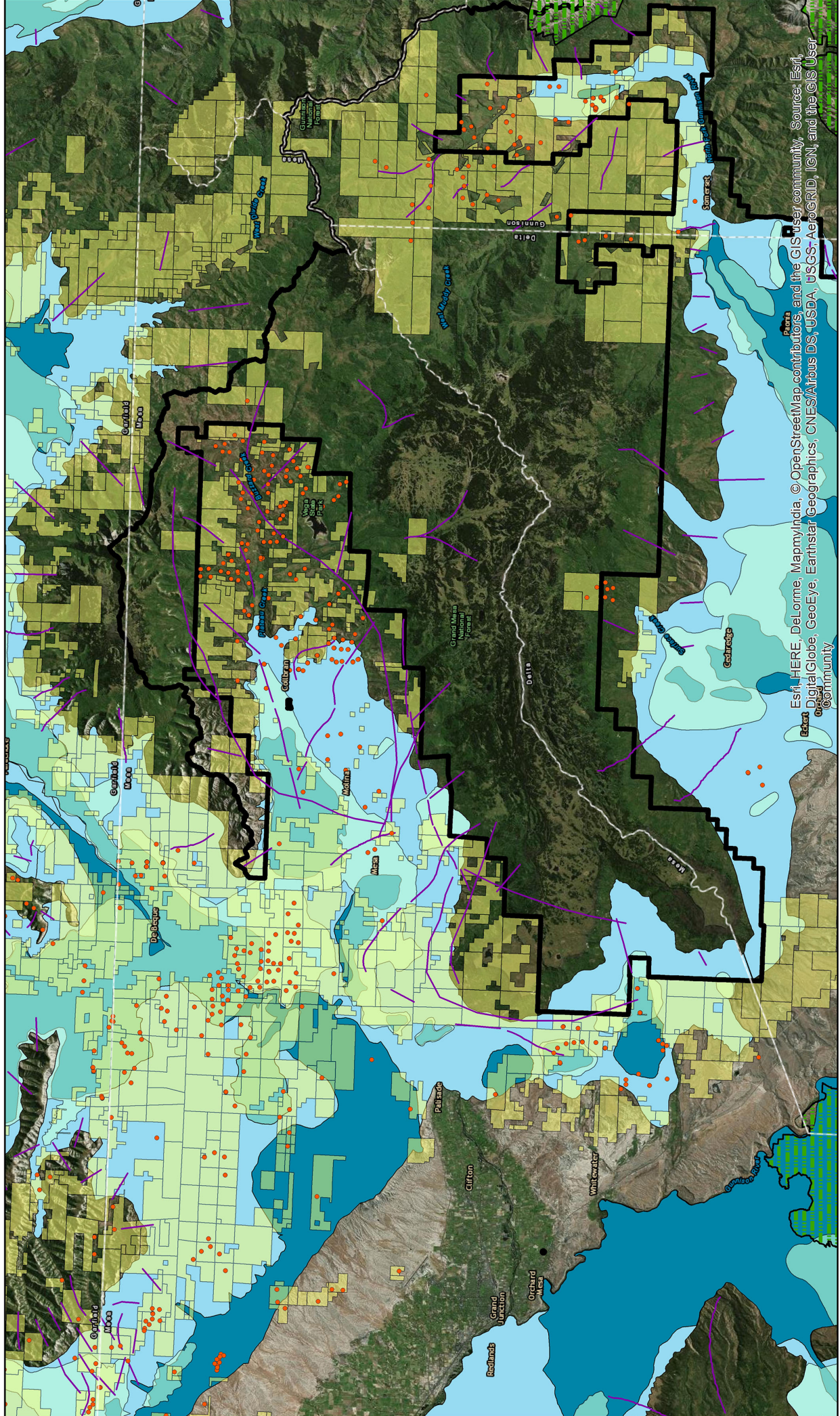
Coordinate System: NAD 1983 UTM Zone 13N
 Projection: Transverse Mercator
 Datum: North American 1983

Cartography By: Taylor L. Applewhite



Map data: HERE, HERE, DeLorme, MapmyIndia, © OpenStreetMap contributors, and the GIS user community. Source: Esri, DigitalGlobe, GeoEye, Earthstar Geographics, CNES/Airbus DS, USDA, USGS, AeroGRID, IGN, and the GIS user community

Oil and Gas Development Near Mule Deer Winter Habitat

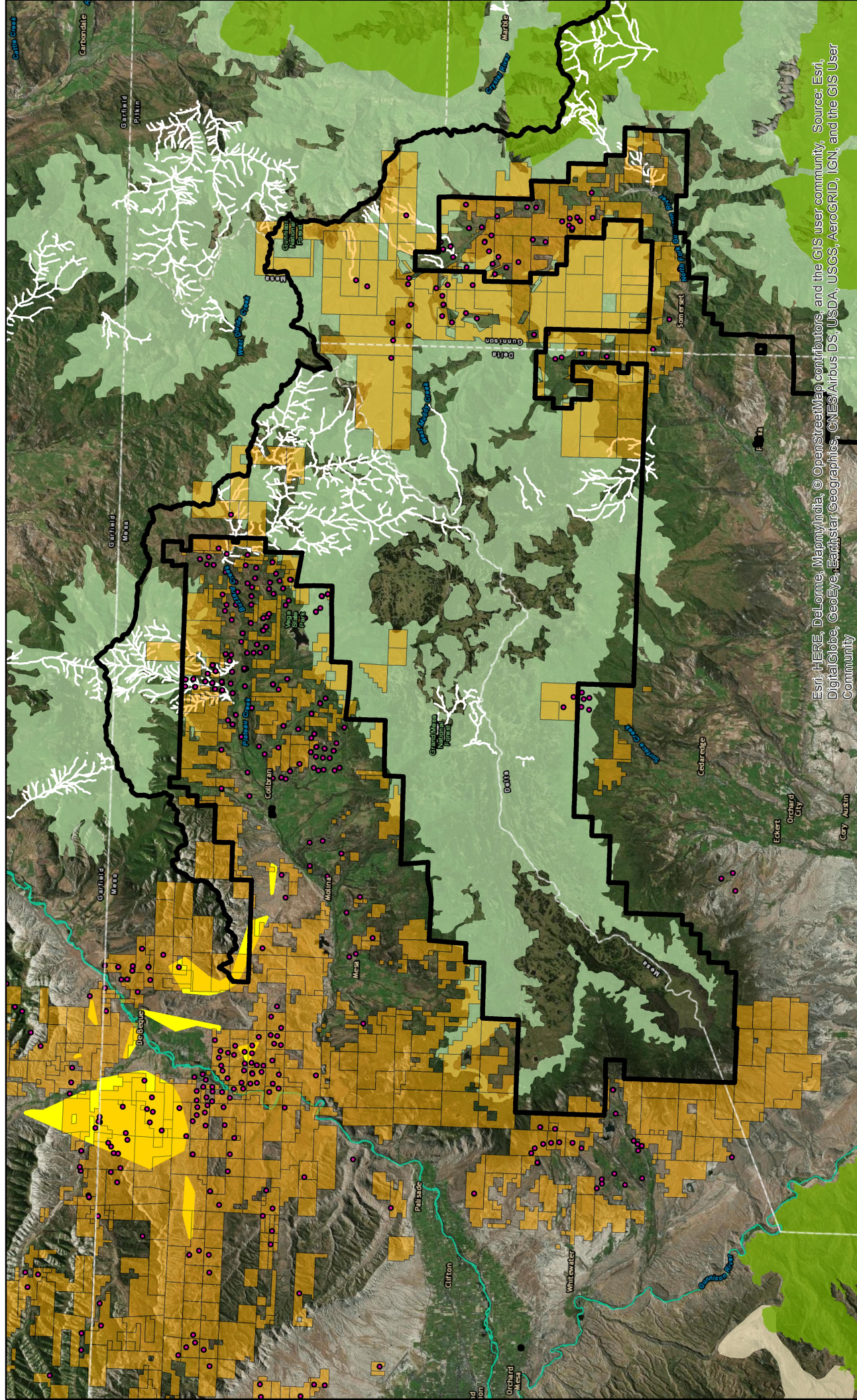


● Active O&G Wells	■ O&G Leases
■ CO Wilderness	■ Winter Concentration
— General Migration Patterns	■ Severe Winter Range
■ GMUG Forest Boundaries	■ Winter Range



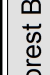







Esri, HERE, DeLorme, MapmyIndia, © OpenStreetMap contributors, and the GIS user community. Source: Esri, Esri, DigitalGlobe, GeoEye, Earthstar Geographics, CNES/Airbus DS, USDA, USGS, AeroGRID, IGN, and the GIS User Community

Cartography By: Taylor L. Applewhite
 Coordinate System: NAD 1983 UTM Zone 13N
 Projection: Transverse Mercator
 Datum: North American 1983

Critical Species Habitat (GMUG National Forests)



Esri, HERE, DeLorme, MapmyIndia, © OpenStreetMap contributors, and the GIS user community, Source: Esri, DigitalGlobe, GeoEye, Earthstar Geographics, CNES/Airbus DS, USDA, USGS, AeroGRID, IGN, and the GIS User Community

	GMUG Forest Boundaries		DeBeque Phacelia Habitat
	CO Wilderness		Colorado Pikeminnow Habitat
	Active Oil and Gas Wells		Lynx Potential Habitat
	Oil and Gas Leases		Gunnison Sage Grouse Lek Sites
			Cutthroat Trout Habitat
			Gunnison Sage Grouse Critical Habitat

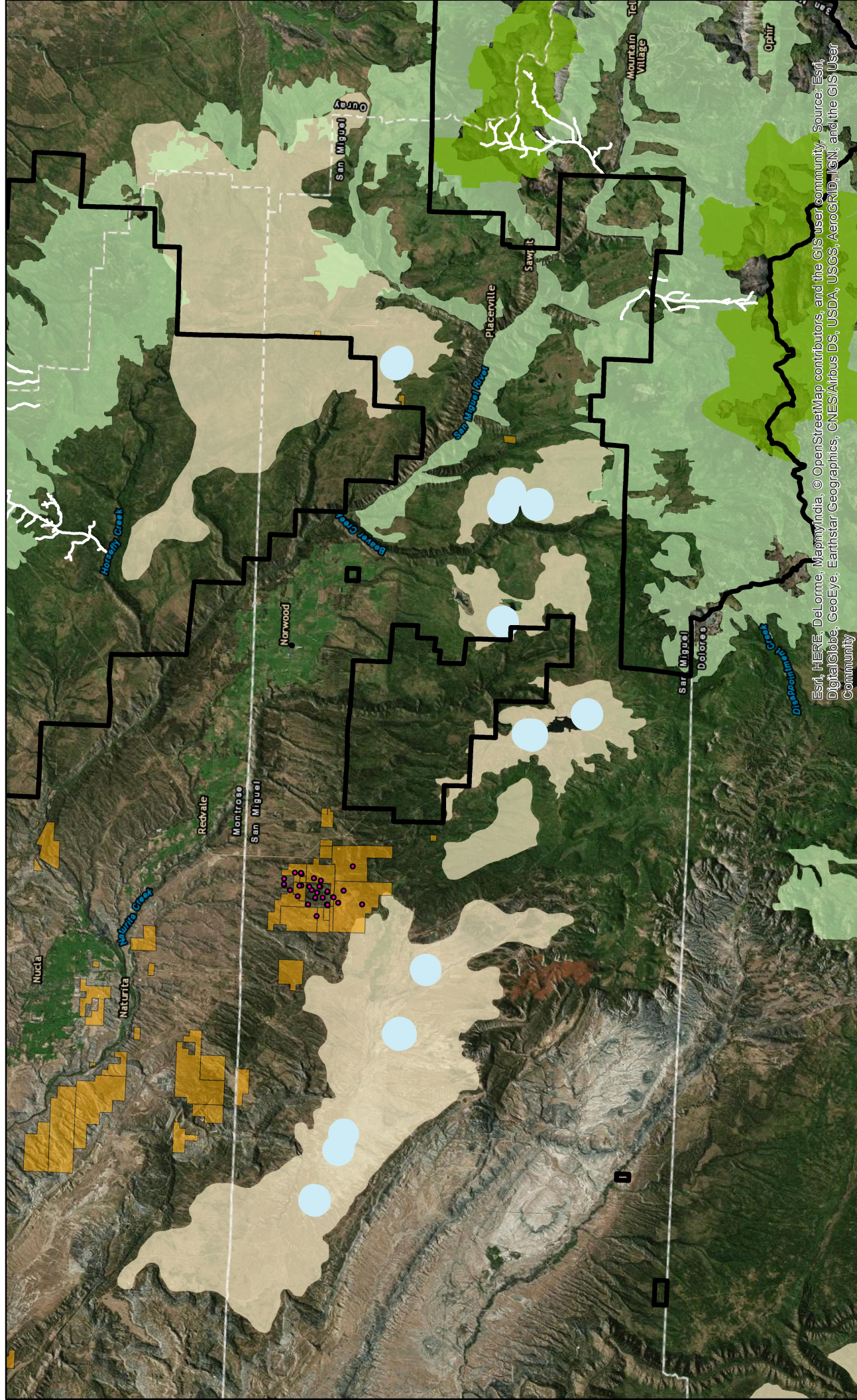
0 2 4 8 12 16 Miles

Coordinate System: NAD 1983 UTM Zone 13N
 Projection: Transverse Mercator
 Datum: North American 1983

Cartography By: Taylor L. Applewhite



Critical Species Habitat (GMUG National Forests)



	GMUG Forest Boundaries		Lynx Potential Habitat
	CO Wilderness		Gunnison Sage Grouse Lek Sites
	Active Oil and Gas Wells		Gunnison Sage Grouse Critical Habitat
	Oil and Gas Leases		Cutthroat Trout Habitat



Esri, HERE, DeLorme, MapmyIndia, © OpenStreetMap contributors, and the GIS user community, Source: Esri, DigitalGlobe, GeoEye, Earthstar Geographics, CNES/Airbus DS, USDA, USGS, AeroGRID, IGN, and the GIS User Community

Coordinate System: NAD 1983 UTM Zone 13N
 Projection: Transverse Mercator
 Datum: North American 1983

Cartography By: Taylor L. Applewhite