

Legend

- Recommended Wilderness (2016 Preferred Alternative)
- Mineral Land Holdings
- Mine
- Drillhole
- Road
- Trail



DRAWN: Jasper Geographics

SCALE: as shown

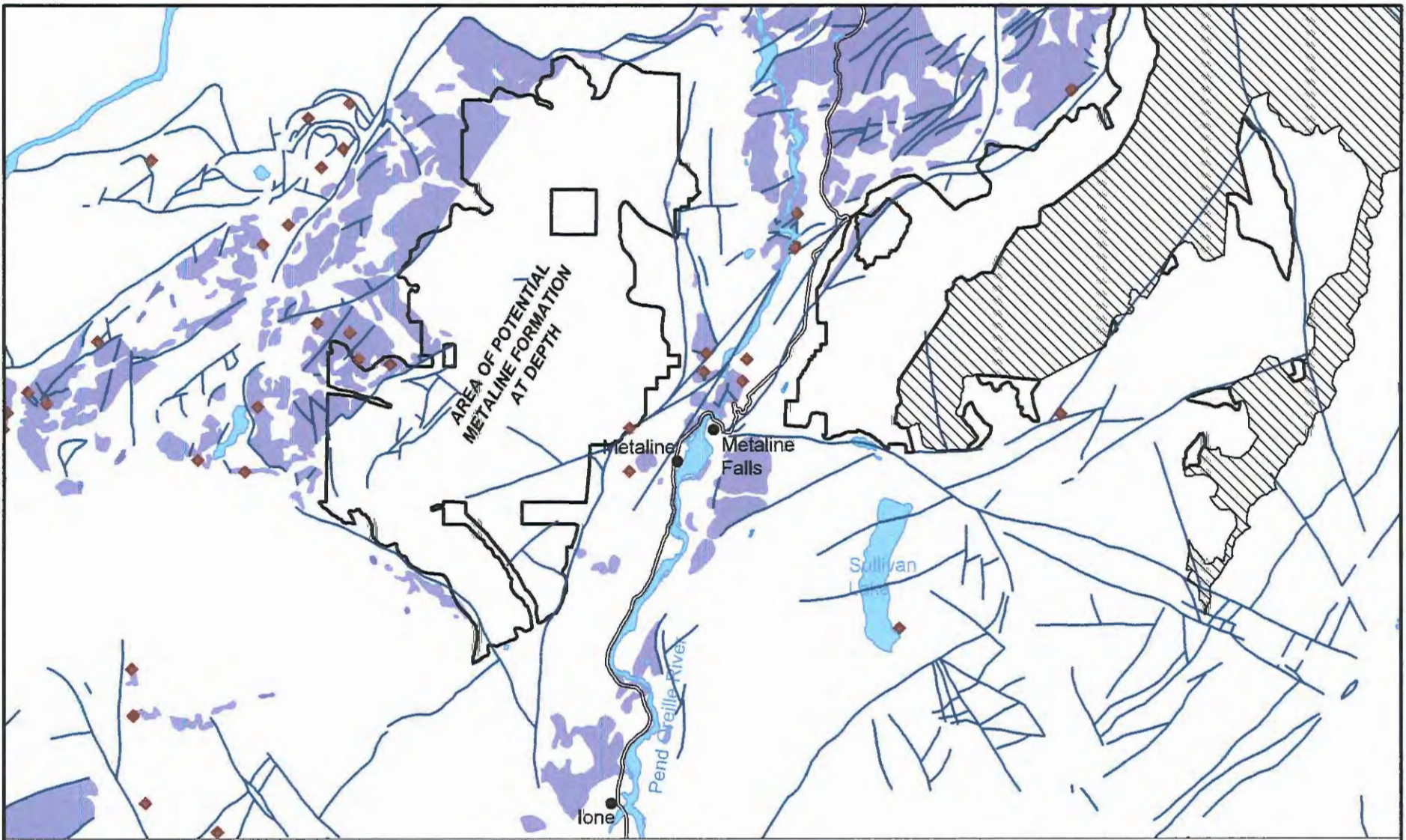
DATE: May 2016

Metaline Contact Mines

EFFECTS OF COLVILLE NF
PROPOSED REVISED LAND &
RESOURCE MGMT PLAN






FIGURE 1

**MINES, PROSPECTS &
DRILLHOLES IN THE
METALINE MINING DISTRICT**
Pend Oreille & Stevens Counties, WA



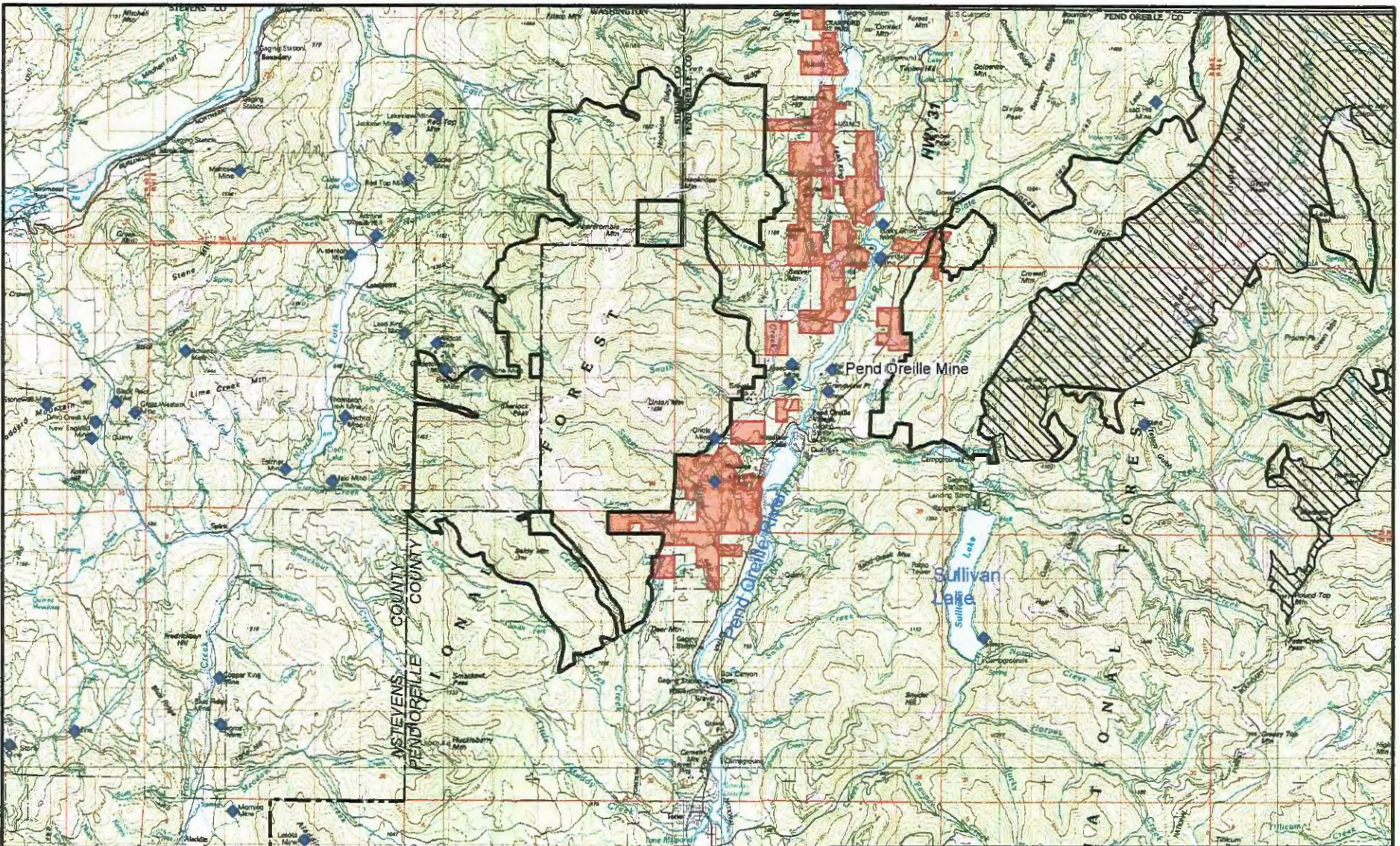
Modified after N.L. Joseph, 1990

Legend

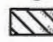



-  Salmo-Priest Wilderness
-  Recommended Wilderness (2016 Preferred Alternative)
-  Metaline Formation
-  Fault
-  Mine



 DRAWN: Jasper Geographics	Metaline Contact Mines	FIGURE 2
	EFFECTS OF COLVILLE NF PROPOSED REVISED LAND & RESOURCE MGMT PLAN	
Metaline Contact Mines DISTRIBUTION OF METALINE FORMATION IN NE WA Pend Oreille & Stevens Counties, WA		
SCALE: as shown DATE: May 2016		



Legend

-  Salmo-Priest Wilderness
-  Recommended Wilderness (2016 Preferred Alternative)
-  MCM Mineral Rights
-  Mine



Area of Interest



DRAWN: Jasper Geographics

SCALE: as shown

DATE: May 2016

Metaline Contact Mines

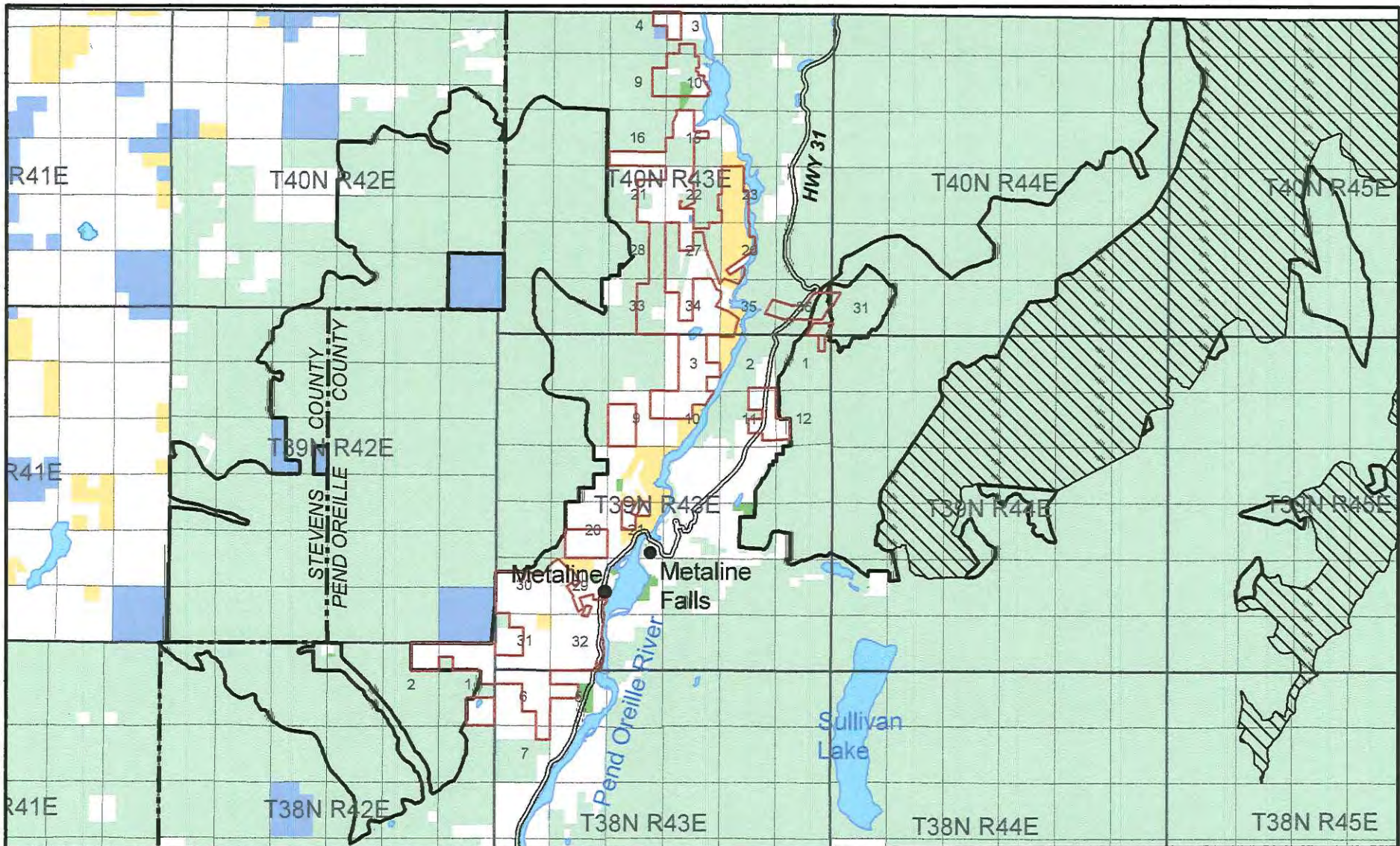
EFFECTS OF COLVILLE NF
PROPOSED REVISED LAND &
RESOURCE MGMT PLAN

FIGURE 3

Metaline Contact Mines

LOCATION MAP

Pend Oreille & Stevens Counties, WA

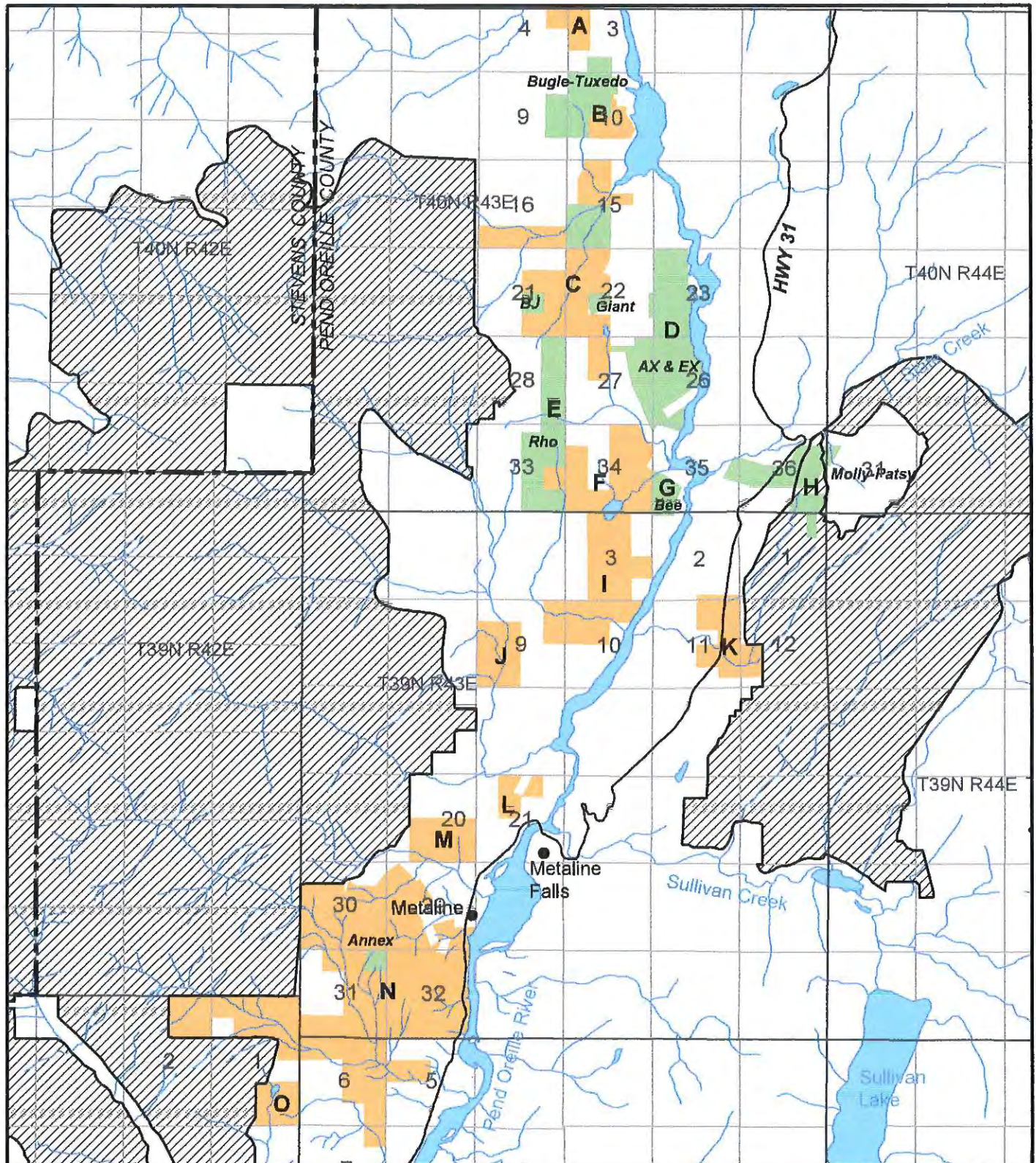


Legend


-  Salmo-Priest Wilderness
-  Recommended Wilderness (2016 Preferred Alternative)
-  MCM Mineral Rights in the Metaline District
-  USFS
-  State
-  BLM
-  Other Government
-  Private



 DRAWN: Jasper Geographics	Metaline Contact Mines EFFECTS OF COLVILLE NF PROPOSED REVISED LAND & RESOURCE MGMT PLAN	FIGURE 4
	Metaline Contact Mines LAND OWNERSHIP Pend Oreille & Stevens Counties, WA	
SCALE: as shown DATE: May 2016		



Legend

 Recommended Wilderness
(2016 Preferred Alternative)

 MCM Private/Fee Land Holdings

 MCM Unpatented Claims



DRAWN: Jasper Geographics

SCALE: as shown

DATE: May 2016

Metaline Contact Mines

EFFECTS OF COLVILLE NF
PROPOSED REVISED LAND &
RESOURCE MGMT PLAN

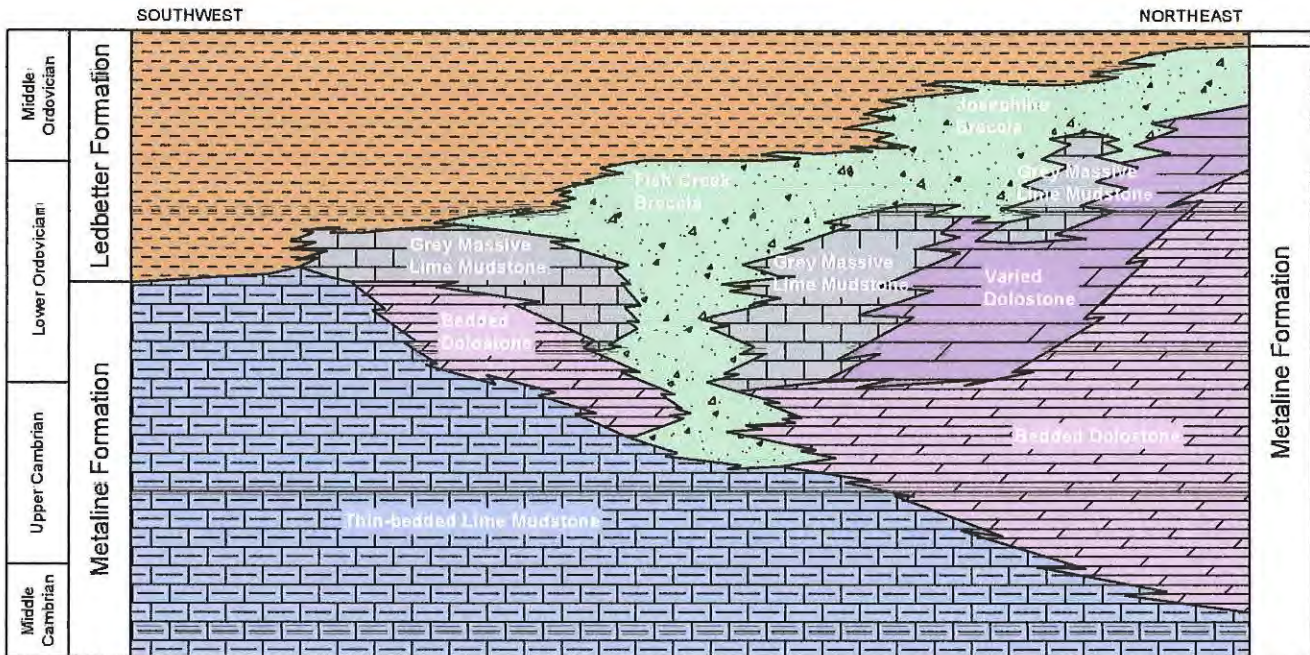
FIGURE 5

Metaline Contact Mines

INDEX MAP OF

MCM PARCEL GROUPS

Pend Oreille & Stevens Counties, WA

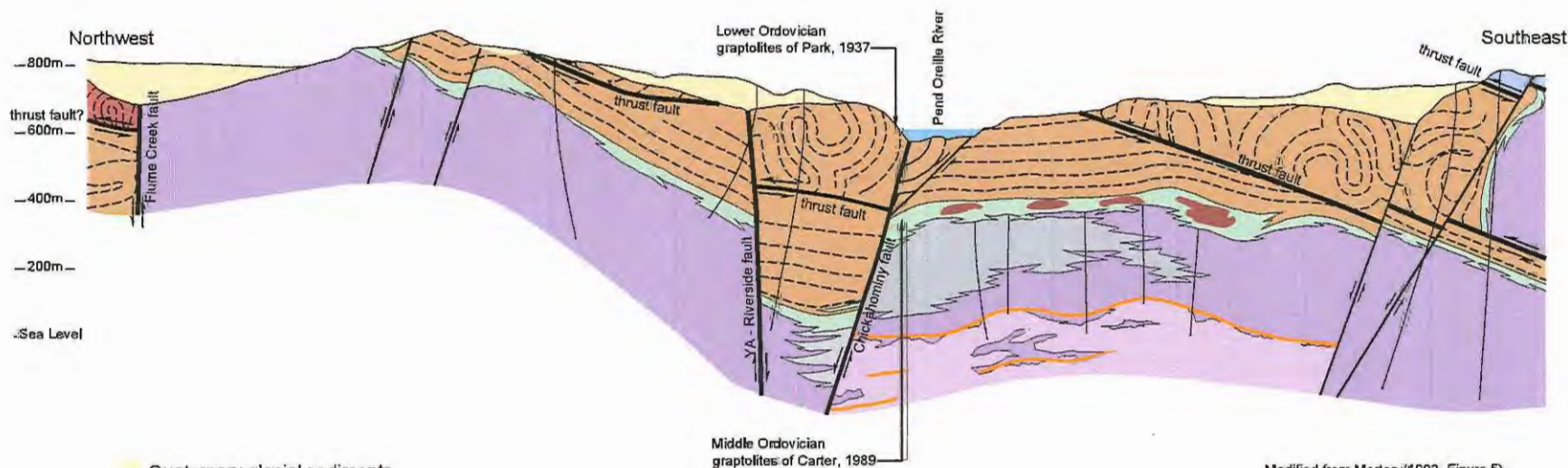


Diagrammatic cross-section illustrating relations among lithofacies in the Metaline Formation of northeastern Washington. Modified after Bush and others, 1991.

	Metaline Contact Mines	
	EFFECTS OF COLVILLE NF PROPOSED REVISED LAND & RESOURCE MGMT PLAN	FIGURE 6
Metaline Contact Mines METALINE FORMATION STRATIGRAPHY Pend Oreille & Stevens Counties, WA		
DRAWN: Jasper Geographics		
SCALE: not to scale		
DATE: May 2016		

Geologic Section across the
Metaline Mining District at the
Pend Oreille Mine
Pend Oreille County, Washington

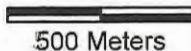
Look N35E



Modified from Morton (1992, Figure 5)


- Quaternary glacial sediments
 - Ledbetter Formation (L. Ord. - Sil.)
 - Josephine lithofacies
 - Varied dolostone lithofacies
 - Massive lime mudstone lithofacies
 - Bedded dolostone lithofacies
 - Bedded lime mudstone lithofacies
 - Lower Cambrian and upper Precambrian
- } Metaline Formation (L. Camb. - M. Ord.)

- Josephine Mineralization & Ore Zone (for representative purposes only)
- Yellowhead Ore Zone
- surface or underground drill hole



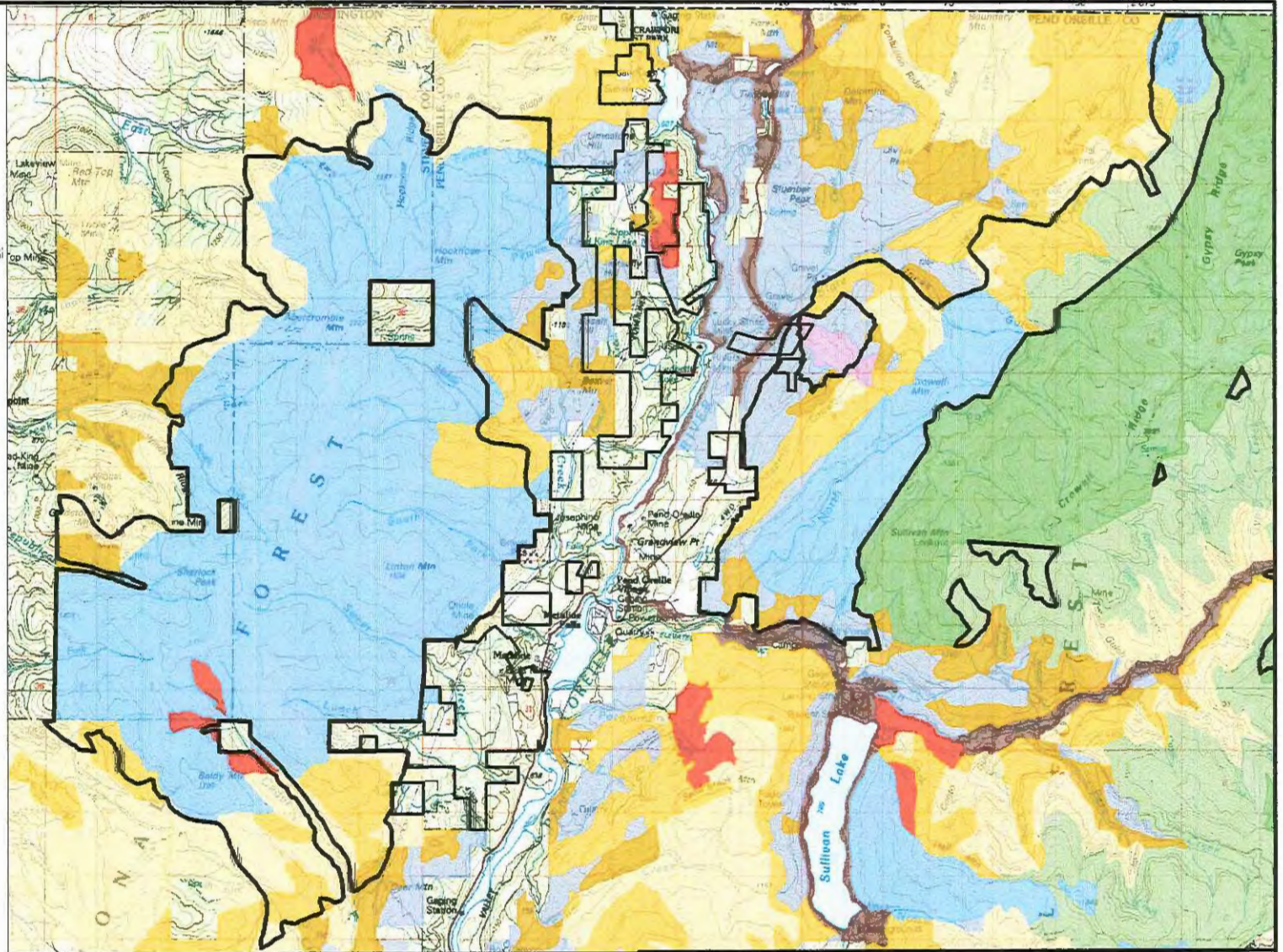
	Metaline Contact Mines	
	EFFECTS OF COLVILLE NF PROPOSED REVISED LAND & RESOURCE MGMT PLAN	FIGURE 7
Metaline Contact Mines		
GEOLOGIC SECTION		
Pend Oreille & Stevens Counties, WA		
DRAWN: J.A. MORTON JASPER GEOGRAPHICS		
SCALE: as shown		
DATE: May 2016		

Legend

-  Recommended Wilderness (2016 Preferred Alternative)
-  MCM Mineral Land Holdings

No Action Management Areas

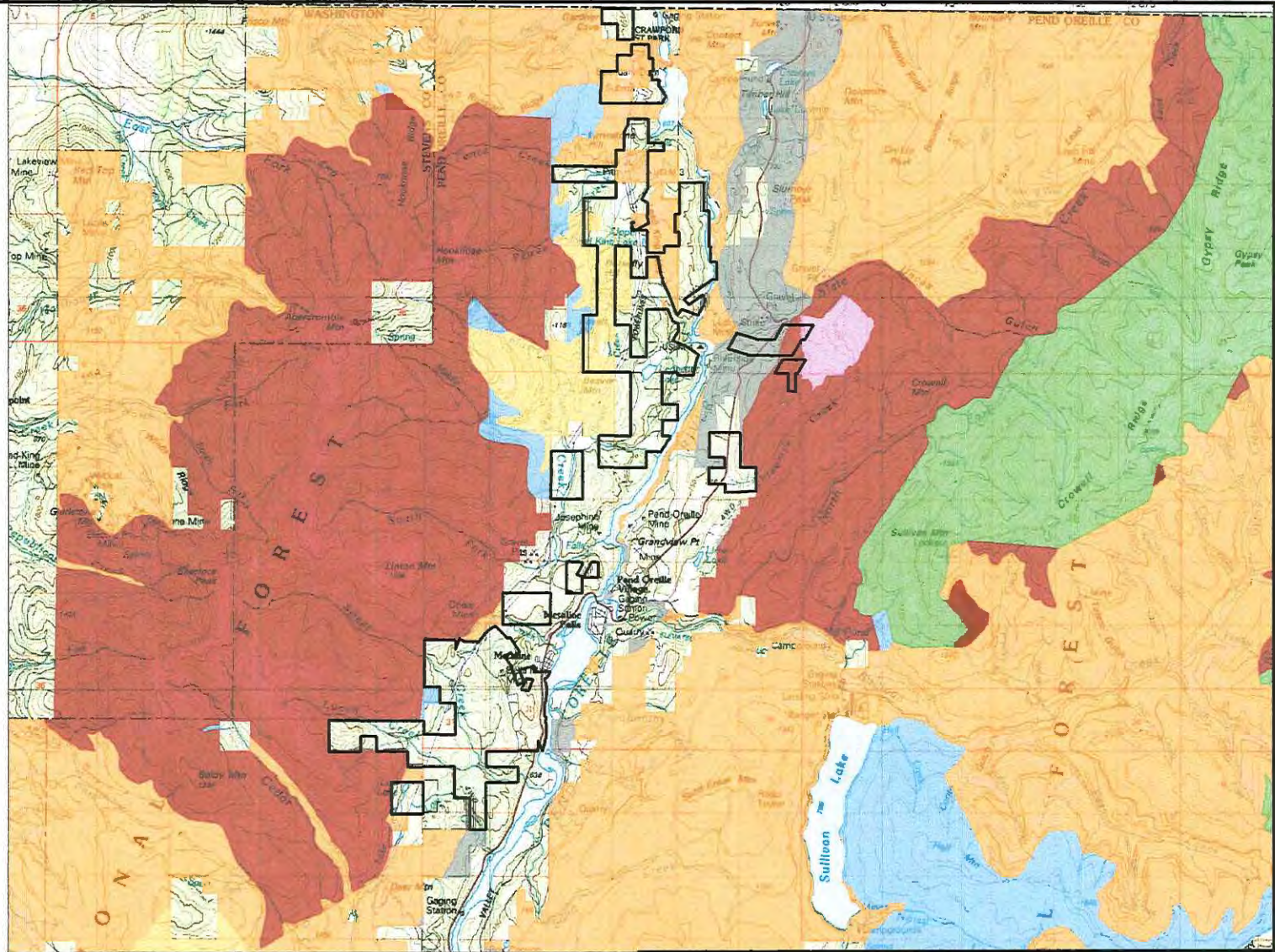
-  Caribou Habitat
-  Old Growth Dependent Species Habitat
-  Recreation
-  Research Natural Area
-  Scenic Timber
-  Scenic Winter Range
-  Semi-Primitive, Non-Motorized Recreation
-  Wilderness
-  Winter Range
-  Wood/Forage



 Metalline Contact Mines EFFECTS OF COLVILLE NF PROPOSED REVISED LAND & RESOURCE MGMT PLAN	FIGURE 8
	Metalline Contact Mines CURRENT STATUS - NO ACTION ALTERNATIVE Pend Oreille & Stevens Counties, WA
DRAWN: Jasper Geographics SCALE: as shown DATE: May 2016	


Legend

-  MCM Mineral Land Holdings
- Alternative P Management Areas**
-  Research Natural Area
-  Wilderness - Congressionally Designated
-  Wilderness - Recommended
-  Scenic Byways
-  Backcountry
-  Focused Restoration
-  General Restoration





	Metaline Contact Mines	
	EFFECTS OF COLVILLE NF PROPOSED REVISED LAND & RESOURCE MGMT PLAN	
DRAWN: Jasper Geographics	FIGURE 9	
SCALE: as shown	Metaline Contact Mines ALTERNATIVE P (PREFERRED ALTERNATIVE)	
DATE: May 2016	Pend Oreille & Stevens Counties, WA	


Legend


 MCM Mineral Land Holdings


Alternative O Management Areas

 Research Natural Area

 Wilderness - Congressionally Designated

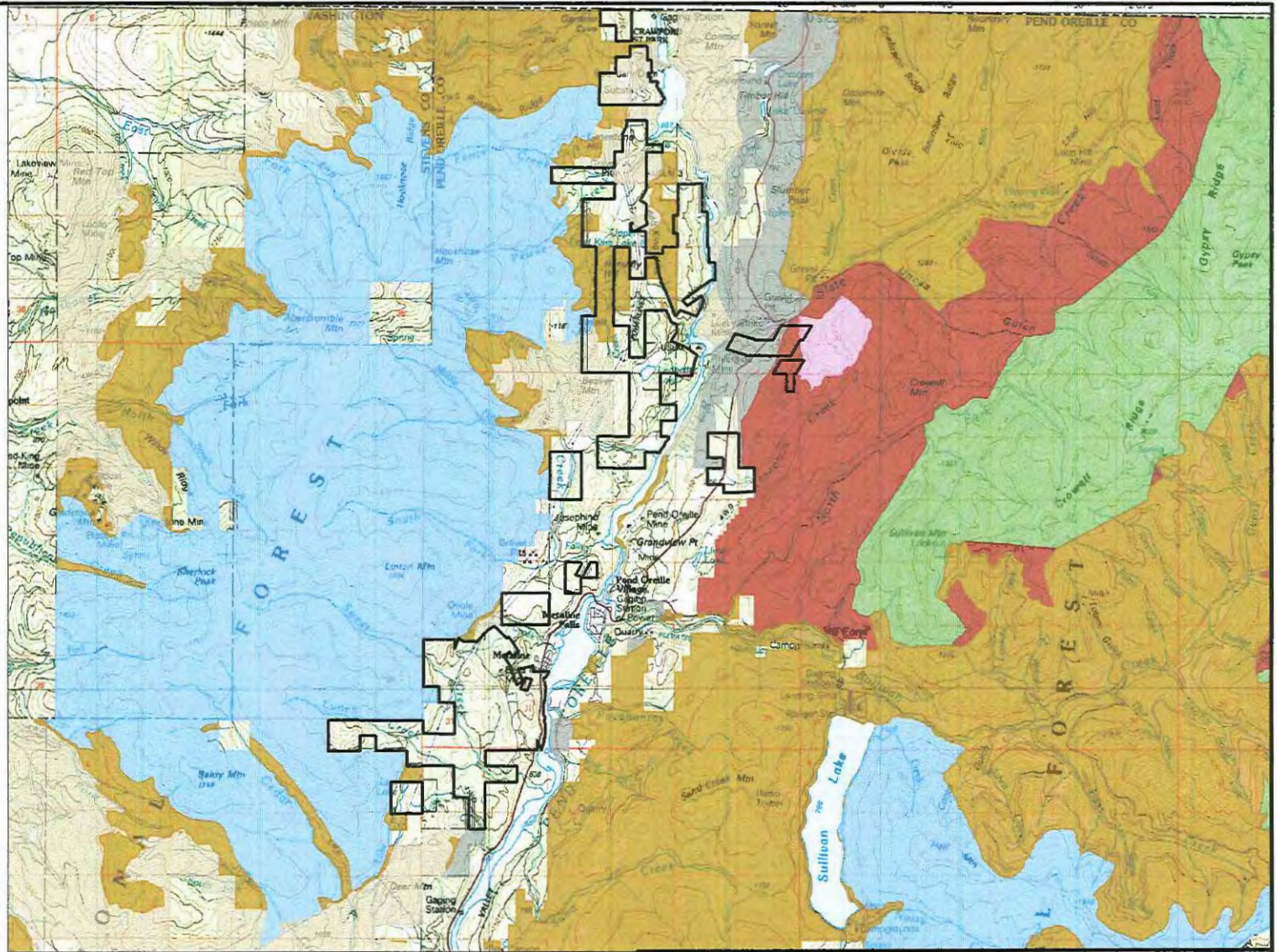
 Wilderness - Recommended

 Scenic Byways

 Backcountry

 Responsible

 Restoration



Metaline Contact Mines

EFFECTS OF COLVILLE NF PROPOSED REVISED LAND & RESOURCE MGMT PLAN **FIGURE 10**

DRAWN: Jasper Geographics

Metaline Contact Mines

ALTERNATIVE O

SCALE: as shown

DATE: May 2016

Pend Oreille & Stevens Counties, WA