

Transportation Infrastructure and Access on National Forests and Grasslands

A Literature Review

Introduction

The Forest Service transportation system is very large with 374,883 miles (603,316 km) of system roads and 143,346 miles (230,693 km) of system trails. The system extends broadly across every national forest and grasslands and through a variety of habitats, ecosystems and terrains. An impressive body of scientific literature exists addressing the various effects of roads on the physical, biological and cultural environment – so much so, in the last few decades a new field of “road ecology” has emerged. In recent years, the scientific literature has expanded to address the effects of roads on climate change adaptation and conversely the effects of climate change on roads, as well as the effects of restoring lands occupied by roads on the physical, biological and cultural environments.

The following literature review summarizes the most recent thinking related to the environmental impacts of forest roads and motorized routes and ways to address them. The literature review is divided into three sections that address the environmental effects of transportation infrastructure on forests, climate change and infrastructure, and creating sustainable forest transportation systems.

- I. [Impacts of Transportation Infrastructure and Access to the Ecological Integrity of Terrestrial and Aquatic Ecosystems and Watersheds](#)
- II. [Climate Change and Transportation Infrastructure Including the Value of Roadless Areas for Climate Change Adaptation](#)
- III. [Sustainable Transportation Management in National Forests as Part of Ecological Restoration](#)

I. Impacts of Transportation Infrastructure and Access to the Ecological Integrity of Terrestrial and Aquatic Ecosystems and Watersheds

It is well understood that transportation infrastructure and access management impact aquatic and terrestrial environments at multiple scales, and, in general, the more roads and motorized routes the greater the impact. In fact, in the past 20 years or so, scientists have realized the magnitude and breadth of ecological issues related to roads; entire books have been written on the topic, e.g., Forman et al. (2003), and a new scientific field called “road ecology” has emerged. Road ecology research centers have been created including the Western Transportation Institute at Montana State University and the Road Ecology Center at the University of California - Davis.¹

¹ See <http://www.westerntransportationinstitute.org/research/roadecology> and <http://roadecology.ucdavis.edu/>

Below, we provide a summary of the current understanding on the impacts of roads and access allowed by road networks to terrestrial and aquatic ecosystems, drawing heavily on Gucinski et al. (2000). Other notable recent peer-reviewed literature reviews on roads include Trombulak and Frissell (2000), Switalski et al. (2004), Coffin (2007), Fahrig and Rytwinski (2009), and Robinson et al. (2010). Recent reviews on the impact of motorized recreation include Joslin and Youmans (1999), Gaines et al. (2003), Davenport and Switalski (2006), Ouren et al. (2007), and Switalski and Jones (2012). These peer-reviewed summaries provide additional information to help managers develop more sustainable transportation systems

Impact on geomorphology and hydrology

The construction or presence of forest roads can dramatically change the hydrology and geomorphology of a forest system leading to reductions in the quantity and quality of aquatic habitat. While there are several mechanisms that cause these impacts (Wemple et al. 2001, Figure 1), most fundamentally, compacted roadbeds reduce rainfall infiltration, intercepting and concentrating water, and providing a ready source of sediment for transport (Wemple et al. 1996, Wemple et al. 2001). In fact, roads contribute more sediment to streams than any other land management activity (Gucinski et al. 2000). Surface erosion rates from roads are typically at least an order of magnitude greater than rates from harvested areas, and three orders of magnitude greater than erosion rates from undisturbed forest soils (Endicott 2008).

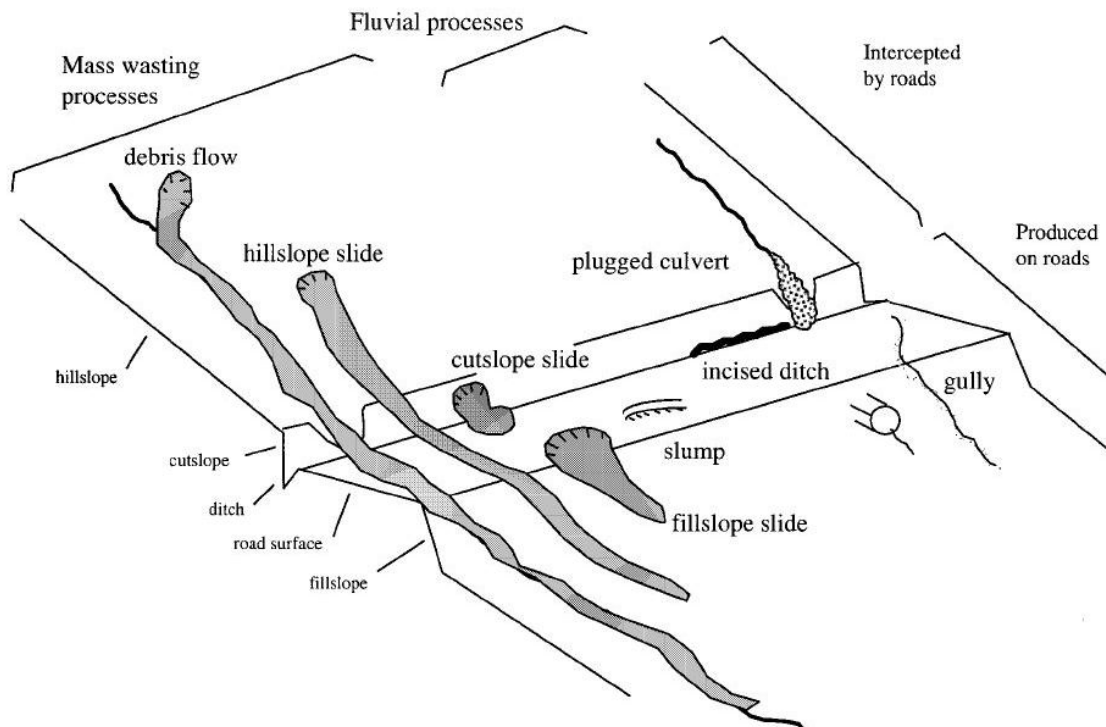


Figure 1: Typology of erosional and depositional features produced by mass-wasting and fluvial processes associated with forest roads (reprinted from Wemple et al. 2001)

Erosion of sediment from roads occurs both chronically and catastrophically. Every time it rains, sediment from the road surface and from cut- and fill-slopes is picked up by rainwater that flows into and on roads (fluvial erosion). The sediment that is entrained in surface flows are often concentrated into road ditches and culverts and directed into streams. The degree of fluvial erosion varies by geology and geography, and increases with increased motorized use (Robichaud et al. 2010). Closed roads produce less sediment, and Foltz et al. (2009) found a significant increase in erosion when closed roads were opened and driven upon. In drier landscapes, wind erosion following vehicle use can be a significant source of soil loss as well (Belnap 2003).

Roads also precipitate catastrophic failures of road beds and fills (mass wasting) during large storm events leading to massive slugs of sediment moving into waterways (Endicott 2008; Gucinski et al. 2000). This typically occurs when culverts are undersized and cannot handle the volume of water, or they simply become plugged with debris. The saturated roadbed can fail entirely and result in a landslide, or the blocked stream crossing can erode the entire fill down to the original stream channel.

The erosion of road- and trail-related sediment and its subsequent movement into stream systems affects the geomorphology of the drainage system in a number of ways. The magnitude of their effects varies by climate, geology, road age, construction / maintenance practices and storm history. It directly alters channel morphology by embedding larger gravels as well as filling pools. It can also have the opposite effect of increasing peak discharges and scouring channels, which can lead to disconnection of the channel and floodplain, and lowered base flows (Furniss et al. 1991; Joslin and Youmans 1999). The width/depth ratio of the stream changes which then can trigger changes in water temperature, sinuosity and other geomorphic factors important for aquatic species survival (Joslin and Youmans 1999; Trombulak and Frissell 2000).

Roads also can modify flowpaths in the larger drainage network. Roads intercept subsurface flow as well as concentrate surface flow, which results in new flowpaths that otherwise would not exist, and the extension of the drainage network into previously unchanneled portions of the hillslope (Gucinski et al. 2000; Joslin and Youmans 1999). Severe aggradation of sediment at stream structures or confluences can force streams to actually go subsurface or make them too shallow for fish passage (Endicott 2008; Furniss et al. 1991).

Impacts on aquatic habitat and fish

Roads can have dramatic and lasting impacts on fish and aquatic habitat. Increased sedimentation in stream beds has been linked to decreased fry emergence, decreased juvenile densities, loss of winter carrying capacity, and increased predation of fishes, and reductions in macro-invertebrate populations that are a food source to many fish species (Rhodes et al. 1994, Joslin and Youmans 1999, Gucinski et al. 2000, Endicott 2008). On a landscape scale, these effects can add up to: changes in the frequency, timing and magnitude of disturbance to aquatic habitat and changes to aquatic habitat structures (e.g., pools, riffles, spawning gravels and in-channel debris), and conditions (food sources, refugi, and water temperature) (Gucinski et al. 2000).

Roads can also act as barriers to migration (Gucinski et al. 2000). Where roads cross streams, road engineers usually place culverts or bridges. Culverts in particular can and often interfere with sediment transport and channel processes such that the road/stream crossing becomes a barrier for fish and aquatic species movement up and down stream. For instance, a culvert may

scour on the downstream side of the crossing, actually forming a waterfall up which fish cannot move. Undersized culverts and bridges can infringe upon the channel or floodplain and trap sediment causing the stream to become too shallow and/or warm such that fish will not migrate past the structure. This is problematic for many aquatic species but especially for anadromous species that must migrate upstream to spawn. Well-known native aquatic species affected by roads include Colorado River cutthroat trout (*Oncorhynchus clarki pleuriticus*), the Threatened Greenback cutthroat trout (*O. c. stomias*), and Rio Grande cutthroat trout (*O. c. virginalis*), as well as other native fishes and amphibians (Endicott 2008).

Impacts on terrestrial habitat and wildlife

Roads and trails impact wildlife through a number of mechanisms including: direct mortality (poaching, hunting/trapping) changes in movement and habitat use patterns (disturbance/avoidance), as well as indirect impacts including alteration of the adjacent habitat and interference with predatory/prey relationships (Wisdom et al. 2000, Trombulak and Frissell 2000). Some of these impacts result from the road itself, and some result from the uses on and around the roads (access). Ultimately, roads have been found to reduce the abundance and distribution of several forest species (Fayrig and Ritwinski 2009, Benítez-López et al. 2010).

Direct mortality and disturbance from road and trail use impacts many different types of species. For example, wide-ranging carnivores can be significantly impacted by a number of factors including trapping, poaching, collisions, negative human interactions, disturbance and displacement (Gaines et al. 2003). Road access has slowed the recovery of the Mexican Wolf (*Canis lupus baileyi*) with more than half of mortalities due to illegal shootings (USDI FWS 2012). Hunted game species such as elk (*Cervus canadensis*), become more vulnerable from access allowed by roads and motorized trails resulting in a reduction in effective habitat among other impacts (Rowland et al. 2005, Switalski and Jones 2012). Slow-moving migratory animals such as amphibians, and reptiles who use roads to regulate temperature are also vulnerable (Gucinski et al. 2000, Brehme et al. 2013). Several bird species are sensitive to disturbance on roads (Barton and Holmes 2007), and several authors have identified buffer zones (Table 1, Switalski and Jones 2008, Whittington and Allen 2008).

Habitat alteration is a significant consequence of roads as well. At the landscape scale, roads fragment habitat blocks into smaller patches that may not be able to support successfully interior forest species. Smaller habitat patches also results in diminished genetic variability, increased inbreeding, and at times local extinctions (Gucinski et al. 2000; Trombulak and Frissell 2000). Motorized trails and routes can also have cascading effects throughout the ecosystem. For example, on an intensively used ORV route in Idaho, native shrubs, bunch grasses, and microbiotic crust were greatly reduced close to the route and replaced with non-native cheat grass (*Bromus tectorum*) and the native shrub rabbitbrush (*Chrysothamnus* spp.; Munger et al. 2003). Because of these habitat changes, fewer reptiles were found alongside the route than were found 100 m away.

Table 1. A summary of raptor nest buffer zones recommended for areas associated with human disturbance (Reprinted from Switalski and Jones 2008)

Species		Median nest buffer (m) (range in parentheses)	Reference
American kestrel	Falco sparverius	125 (50-200)	Richardson and Miller (1997)
Ferruginous hawk	Buteo regalis	300	Hamann et al. (1999)
Bald eagle	Haliaeetus leucocephalus	400	Hamann et al. (1999)
Northern goshawk	Accipiter gentilis	450 (400-500)	Jones (1979)
Sharp-shinned hawk	Accipiter striatus	450 (400-500)	Jones (1979)
Cooper's hawk	Accipiter cooperii	525 (400-500)	Richardson and Miller (1997)
Prairie falcon	Falco mexicanus	650 (50-800)	Richardson and Miller (1997)
Golden eagle	Aquila chrysaetos	800 (200-1600)	Richardson and Miller (1997)
Peregrine falcon	Falco peregrinus	800 (800-1600)	Richardson and Miller (1997)
Red-tailed hawk	Buteo jamaicensis	800	Call (1979)
Mexican spotted owl	Strix occidentalis lucida	900	US Fish and Wildlife Service (1995)
Osprey	Pandion haliaetus	1000 (400-1500)	Richardson and Miller (1997)

Roads also change the composition and structure of ecosystems along buffer zones, called edge-affected zones. The width of edge-affected zones varies by what metric is being discussed; however, researchers have documented road-avoidance zones a kilometer or more away from a road (Table 2). In heavily roaded landscapes, edge-affected acres can be a significant fraction of total acres. For example, in a landscape area where the road density is 3 mi/mi² (not an uncommon road density in national forests) and where the edge-affected zone is estimated to be 500 ft from the center of the road to each side, the edge-affected zone is 56% of the total acreage.

Table 2: A summary of some documented road-avoidance zones for various species (adapted from Robinson et al. 2010).

Species	Avoidance zone		Reference
	m (ft)	Type of disturbance	
Snakes	650 (2133)	Forestry roads	Bowles (1997)
Salamander	35 (115)	Narrow forestry road, light traffic	Semlitsch (2003)
Woodland birds	150 (492)	Unpaved roads	Ortega and Capen (2002)
Spotted owl	400 (1312)	Forestry roads, light traffic	Wasser et al. (1997)
Marten	<100 (<328)	Any forest opening	Hargis et al. (1999)
Elk	500–1000 (1640-3281)	Logging roads, light traffic	Edge and Marcum (1985)
	100–300 (328-984)	Mountain roads depending on traffic volume	Rost and Bailey (1979)
Black bear	274 (899)	Spring, unpaved roads	Kasworm and Manley (1990)
	914 (2999)	Fall, unpaved roads	

Roads and trails also affect ecosystems and habitats because they are also a major vector of non-native plant and animal species. This can have significant ecological and economic impacts when the invading species are aggressive and can overwhelm or significantly alter native species and systems. In addition, roads can increase harassment, poaching and collisions with vehicles, all of which lead to stress or mortality (Wisdom et al. 2000).

Recent reviews have synthesized the impacts of roads on animal abundance and distribution. Fahrig and Rytwinski (2009) did a complete review of the empirical literature on effects of roads and traffic on animal abundance and distribution looking at 79 studies that addressed 131 species and 30 species groups. They found that the number of documented negative effects of roads on animal abundance outnumbered the number of positive effects by a factor of 5. Amphibians, reptiles, most birds tended to show negative effects. Small mammals generally showed either positive effects or no effect, mid-sized mammals showed either negative effects or no effect, and large mammals showed predominantly negative effects. Benítez-López et al. (2010) conducted a meta-analysis on the effects of roads and infrastructure proximity on mammal and bird populations. They found a significant pattern of avoidance and a reduction in bird and mammal populations in the vicinity of infrastructure.

Road density² thresholds for fish and wildlife

It is well documented that beyond specific road density thresholds, certain species will be negatively affected, and some will be extirpated. Most studies that look into the relationship between road density and wildlife focus on the impacts to large endangered carnivores or hunted game species, although high road densities certainly affect other species – for instance, reptiles and amphibians. Gray wolves (*Canis lupus*) in the Great Lakes region and elk in Montana and Idaho have undergone the most long-term and in depth analysis. Forman and Hersperger (1996) found that in order to maintain a naturally functioning landscape with sustained populations of large mammals, road density must be below 0.6 km/km² (1.0 mi/mi²). Several studies have since substantiated their claim (Robinson et al. 2010, Table 3).

A number of studies at broad scales have also shown that higher road densities generally lead to greater impacts to aquatic habitats and fish density (Table 3). Carnefix and Frissell (2009) provide a concise review of studies that correlate cold water fish abundance and road density, and from the cited evidence concluded that “1) no truly “safe” threshold road density exists, but rather negative impacts begin to accrue and be expressed with incursion of the very first road segment; and 2) highly significant impacts (e.g., threat of extirpation of sensitive species) are already apparent at road densities on the order of 0.6 km/km² (1.0 mi/mi²) or less” (p. 1).

² We intend the term “road density” to refer to the density all roads within national forests, including system roads, closed roads, non-system roads administered by other jurisdictions (private, county, state), temporary roads and motorized trails. Please see Attachment 2 for the relevant existing scientific information supporting this approach.

Table 3: A summary of some road-density thresholds and correlations for terrestrial and aquatic species and ecosystems (reprinted from Robinson et al. 2010).

Species (Location)	Road density (mean, guideline, threshold, correlation)	Reference
Wolf (Minnesota)	0.36 km/km ² (mean road density in primary range); 0.54 km/km ² (mean road density in peripheral range)	Mech et al. (1988)
Wolf	>0.6 km/km ² (absent at this density)	Jalkotzy et al. (1997)
Wolf (Northern Great Lakes region)	>0.45 km/km ² (few packs exist above this threshold); >1.0 km/km ² (no pack exist above this threshold)	Mladenoff et al. (1995)
Wolf (Wisconsin)	0.63 km/km ² (increasing due to greater human tolerance)	Wydeven et al. (2001)
Wolf, mountain lion (Minnesota, Wisconsin, Michigan)	0.6 km/km ² (apparent threshold value for a naturally functioning landscape containing sustained populations)	Thiel (1985); van Dyke et al. (1986); Jensen et al. (1986); Mech et al. (1988); Mech (1989)
Elk (Idaho)	1.9 km/km ² (density standard for habitat effectiveness)	Woodley 2000 cited in Beazley et al. 2004
Elk (Northern US)	1.24 km/km ² (habitat effectiveness decline by at least 50%)	Lyon (1983)
Elk, bear, wolverine, lynx, and others	0.63 km/km ² (reduced habitat security and increased mortality)	Wisdom et al. (2000)
Moose (Ontario)	0.2-0.4 km/km ² (threshold for pronounced response)	Beyer et al. (2013)
Black bear (North Carolina)	>1.25 km/km ² (open roads); >0.5 km/km ² (logging roads); (interference with use of habitat)	Brody and Pelton (1989)
Black bear	0.25 km/km ² (road density should not exceed)	Jalkotzy et al. (1997)
Bobcat (Wisconsin)	1.5 km/km ² (density of all road types in home range)	Jalkotzy et al. (1997)
Large mammals	>0.6 km/km ² (apparent threshold value for a naturally functioning landscape containing sustained populations)	Forman and Hersperger (1996)
Fish populations (Medicine Bow National Forest)	(1) Positive correlation of numbers of culverts and stream crossings and amount of fine sediment in stream channels (2) Negative correlation of fish density and numbers of culverts	Eaglin and Hubert (1993) cited in Gucinski et al. (2001)
Macroinvertebrates	Species richness negatively correlated with an index of road density	McGurk and Fong (1995)
Non-anadromous salmonids (Upper Columbia River basin)	(1) Negative correlation likelihood of spawning and rearing and road density (2) Negative correlation of fish density and road density	Lee et al. (1997)

Where both stream and road densities are high, the incidence of connections between roads and streams can also be expected to be high, resulting in more common and pronounced effects of roads on streams (Gucinski et al. 2000). For example, a study on the Medicine Bow National Forest (WY) found as the number of culverts and stream crossings increased, so did the amount of sediment in stream channels (Eaglin and Hubert 1993). They also found a negative correlation with fish density and the number of culverts. Invertebrate communities can also be impacted. McGurk and Fong (1995) report a negative correlation between an index of road density with macroinvertebrate diversity.

Anderson et al. (2012) also showed that watershed conditions tend to be best in areas protected from road construction and development. Using the US Forest Service's Watershed Condition Framework assessment data, they showed that National Forest lands that are protected under the Wilderness Act, which provides the strongest safeguards, tend to have the healthiest watersheds. Watersheds in Inventoried Roadless Areas – which are protected from road building and logging by the Roadless Area Conservation Rule – tend to be less healthy than watersheds in designated Wilderness, but they are considerably healthier than watersheds in the managed landscape.

Impacts on other resources

Roads and motorized trails also play a role in affecting wildfire occurrence. Research shows that human-ignited wildfires, which account for more than 90% of fires on national lands, is almost five times more likely in areas with roads (USDA Forest Service 1996a; USDA Forest Service 1998). Furthermore, Baxter (2002) found that off-road vehicles (ORVs) can be a significant source of fire ignitions on forestlands. Roads can affect where and how forests burn and, by extension, the vegetative condition of the forest. See Attachment 1 for more information documenting the relationship between roads and wildfire occurrence.

Finally, access allowed by roads and trails can increase of ORV and motorized use in remote areas threatening archaeological and historic sites. Increased visitation has resulted in intentional and unintentional damage to many cultural sites (USDI Bureau of Land Management 2000, Schiffman 2005).

II. Climate Change and Transportation Infrastructure including the value of roadless areas for climate change adaptation

As climate change impacts grow more profound, forest managers must consider the impacts on the transportation system as well as from the transportation system. In terms of the former, changes in precipitation and hydrologic patterns will strain infrastructure at times to the breaking point resulting in damage to streams, fish habitat, and water quality as well as threats to public safety. In terms of the latter, the fragmenting effect of roads on habitat will impede the movement of species which is a fundamental element of adaptation. Through planning, forest managers can proactively address threats to infrastructure, and can actually enhance forest resilience by removing unneeded roads to create larger patches of connected habitat.

Impact of climate change and roads on transportation infrastructure

In addition to a much warmer climate, it is expected that climate change will be responsible for more extreme weather events, leading to increasing flood severity, more frequent landslides, changing hydrographs (peak, annual mean flows, etc.), and changes in erosion and

sedimentation rates and delivery processes³. Roads and trails in national forests, if designed by an engineering standard at all, were designed for storms and water flows typical of past decades, and hence may not be designed for the storms in future decades. Hence, climate driven changes may cause transportation infrastructure to malfunction or fail (ASHTO 2012, USDA Forest Service 2010). The likelihood is higher for facilities in high-risk settings—such as rain-on-snow zones, coastal areas, and landscapes with unstable geology (USDA Forest Service 2010).

Forests fragmented by roads will likely demonstrate less resistance and resilience to stressors, like those associated with climate change (Noss 2001). First, the more a forest is fragmented (and therefore the higher the edge/interior ratio), the more the forest loses its inertia characteristic, and becoming less resilient and resistant to climate change. Second, the more a forest is fragmented characterized by isolated patches, the more likely the fragmentation will interfere with the ability of species to track shifting climatic conditions over time and space. Noss (2001) predicts that weedy species with effective dispersal mechanisms might benefit from fragmentation at the expense of native species.

Modifying infrastructure to increase resilience

To prevent or reduce road failures, culvert blow-outs, and other associated hazards, forest managers will need to take a series of actions. These include replacing undersized culverts with larger ones, prioritizing maintenance and upgrades (e.g., installing drivable dips and more outflow structures), and obliterating roads that are no longer needed and pose erosion hazards (USDA Forest Service 2010, USDA Forest Service 2012a, USDA Forest Service 2011, Table 4).

Olympic National Forest has developed a number of documents oriented at oriented at protecting watershed health and species in the face of climate change, including a 2003 travel management strategy and a report entitled *Adapting to Climate Change in Olympic National Park and National Forest*. In the travel management strategy, Olympic National Forest recommended that 1/3rd of its road system be decommissioned and obliterated (USDA Forest Service 2011a). In addition, the plan called for addressing fish migration barriers in a prioritized and strategic way – most of these are associated with roads. The report calls for road decommissioning, relocation of roads away from streams, enlarging culverts as well as replacing culverts with fish-friendly crossings (USDA Forest Service 2011a, Table 4).

³ <http://www.epa.gov/climatechange/impacts-adaptation/southwest.html>

Table 4: Current and expected sensitivities of fish to climate change on the Olympic Peninsula, associated adaptation strategies and action for fisheries and fish habitat management and relevant to transportation management at Olympic National Forest and Olympic National Park (excerpt reprinted from USDA Forest Service 2011a).

Current and expected sensitivities	Adaptation strategies and actions
Changes in habitat quantity and quality	<ul style="list-style-type: none">• Implement habitat restoration projects that focus on re-creating watershed processes and functions and that create diverse, resilient habitat.
Increase in culvert failures, fill-slope failures, stream adjacent road failures, and encroachment from stream-adjacent road segments	<ul style="list-style-type: none">• Decommission unneeded roads.• Remove sidecast, improve drainage, and increase culvert sizing on remaining roads.• Relocate stream-adjacent roads.
Greater difficulty disconnecting roads from stream channels	<ul style="list-style-type: none">• Design more resilient stream crossing structures.
Major changes in quantity and timing of streamflow in transitional watersheds	<ul style="list-style-type: none">• Make road and culvert designs more conservative in transitional watersheds to accommodate expected changes.
Decrease in area of headwater streams	<ul style="list-style-type: none">• Continue to correct culvert fish passage barriers.• Consider re-prioritizing culvert fish barrier correction projects.
Decrease in habitat quantity and connectivity for species that use headwater streams	<ul style="list-style-type: none">• Restore habitat in degraded headwater streams that are expected to retain adequate summer streamflow (ONF).

In December 2012, the USDA Forest Service published a report entitled “Assessing the Vulnerability of Watersheds to Climate Change.” This document reinforces the concept expressed by Olympic National Forest that forest managers need to be proactive in reducing erosion potential from roads:

“Road improvements were identified as a key action to improve condition and resilience of watersheds on all the pilot Forests. In addition to treatments that reduce erosion, road improvements can reduce the delivery of runoff from road segments to channels, prevent diversion of flow during large events, and restore aquatic habitat connectivity by providing for passage of aquatic organisms. As stated previously, watershed sensitivity is determined by both inherent and management-related factors. Managers have no control over the inherent factors, so to improve resilience, efforts must be directed at anthropogenic influences such as instream flows, roads, rangeland, and vegetation management....

[Watershed Vulnerability Analysis] results can also help guide implementation of travel management planning by informing priority setting for decommissioning roads and road reconstruction/maintenance. As with the Ouachita NF example, disconnecting roads from the stream network is a key objective of such work. Similarly, WVA analysis could also help prioritize aquatic organism passage projects at road-stream crossings to allow migration by aquatic residents to suitable habitat as streamflow and temperatures change” (USDA Forest Service 2012a, p. 22-23).

Reducing fragmentation to enhance aquatic and terrestrial species adaptation

Decommissioning and upgrading roads and thus reducing the amount of fine sediment deposited on salmonid nests can increase the likelihood of egg survival and spawning success (McCaffery et al. 2007). In addition, this would reconnect stream channels and remove barriers such as culverts. Decommissioning roads in riparian areas may provide further benefits to salmon and other aquatic organisms by permitting reestablishment of streamside vegetation, which provides shade and maintains a cooler, more moderated microclimate over the stream (Battin et al. 2007).

One of the most well documented impacts of climate change on wildlife is a shift in the ranges of species (Parmesan 2006). As animals migrate, landscape connectivity will be increasingly important (Holman et al. 2005). Decommissioning roads in key wildlife corridors will improve connectivity and be an important mitigation measure to increase resiliency of wildlife to climate change. For wildlife, road decommissioning can reduce the many stressors associated with roads. Road decommissioning restores habitat by providing security and food such as grasses and fruiting shrubs for wildlife (Switalski and Nelson 2011). See Attachment 3 for a map that displays wildlife corridors in Northern New Mexico.

Forests fragmented by roads and motorized trail networks will likely demonstrate less resistance and resilience to stressors, such as weeds. As a forest is fragmented and there is more edge habitat, Noss (2001) predicts that weedy species with effective dispersal mechanisms will increasingly benefit at the expense of native species. However, decommissioned roads when seeded with native species can reduce the spread of invasive species (Grant et al. 2011), and help restore fragmented forestlands. Off-road vehicles with large knobby tires and large undercarriages are also a key vector for weed spread (e.g., Rooney 2006). Strategically closing and decommissioning motorized routes, especially in roadless areas, will reduce the spread of weeds on forestlands (Gelbard and Harrison 2003).

Transportation infrastructure and carbon sequestration

The topic of the relationship of road restoration and carbon has only recently been explored. There is the potential for large amounts of carbon (C) to be sequestered by reclaiming roads. When roads are decompacted during reclamation, vegetation and soils can develop more rapidly and sequester large amounts of carbon. A recent study estimated total soil C storage increased 6 fold to 6.5×10^7 g C/km (to 25 cm depth) in the northwestern US compared to untreated abandoned roads (Lloyd et al. 2013). Another recent study concluded that reclaiming 425 km of logging roads over the last 30 years in Redwood National Park in Northern California resulted in net carbon savings of 49,000 Mg carbon to date (Madej et al. 2013, Table 5).

Kerekvliet et al. (2008) published a Wilderness Society briefing memo on the impact to carbon sequestration from road decommissioning. Using Forest Service estimates of the fraction of road miles that are unneeded, the authors calculated that restoring 126,000 miles of roads to a natural state would be equivalent to revegetating an area larger than Rhode Island. In addition, they calculate that the net economic benefit of road treatments are always positive and range from US\$0.925-1.444 billion.

Table 5. Carbon budget implications in road decommissioning projects (reprinted from Madej et al. 2013).

Road Decommissioning Activities and Processes	Carbon Cost	Carbon Savings
Transportation of staff to restoration sites (fuel emissions)	X	
Use of heavy equipment in excavations (fuel emissions)	X	
Cutting trees along road alignment during hillslope recontouring	X	
Excavation of road fill from stream crossings		X
Removal of road fill from unstable locations		X
Reduces risk of mass movement		X
Post-restoration channel erosion at excavation sites	X	
Natural revegetation following road decompaction		X
Replanting trees		X
Soil development following decompaction		X

Benefits of roadless areas and roadless area networks to climate change adaptation

Undeveloped natural lands provide numerous ecological benefits. They contribute to biodiversity, enhance ecosystem representation, and facilitate connectivity (Loucks et al. 2003; Crist and Wilmer 2002, Wilcove 1990, The Wilderness Society 2004, Strittholt and Dellasala 2001, DeVelice and Martin 2001), and provide high quality or undisturbed water, soil and air (Anderson et al. 2012, Dellasalla et al. 2011). They also can serve as ecological baselines to help us better understand our impacts to other landscapes, and contribute to landscape resilience to climate change.

Forest Service roadless lands, in particular, are heralded for the conservation values they provide. These are described at length in the preamble of the Roadless Area Conservation Rule (RACR)⁴ as well as in the Final Environmental Impact Statement (FEIS) for the RACR⁵, and include: high quality or undisturbed soil, water, and air; sources of public drinking water; diversity of plant and animal communities; habitat for threatened, endangered, proposed, candidate, and sensitive species and for those species dependent on large, undisturbed areas of land; primitive, semi-primitive non- motorized, and semi-primitive motorized classes of dispersed recreation; reference landscapes; natural appearing landscapes with high scenic quality; traditional cultural properties and sacred sites; and other locally identified unique characteristics (e.g., include uncommon geological formations, unique wetland complexes, exceptional hunting and fishing opportunities).

The Forest Service, National Park Service, and US Fish and Wildlife Service recognize that protecting and connecting roadless or lightly roaded areas is an important action agencies can take to enhance climate change adaptation. For example, the Forest Service National Roadmap for Responding to Climate Change (USDA Forest Service 2011b) establishes that increasing connectivity and reducing fragmentation are short and long term actions the Forest Service

⁴ Federal Register .Vol. 66, No. 9. January 12, 2001. Pages 3245-3247.

⁵ Final Environmental Impact Statement, Vol. 1, 3–3 to 3–7

should take to facilitate adaptation to climate change.⁶ The National Park Service also identifies connectivity as a key factor for climate change adaptation along with establishing “blocks of natural landscape large enough to be resilient to large-scale disturbances and long-term changes” and other factors. The agency states that: “The success of adaptation strategies will be enhanced by taking a broad approach that identifies connections and barriers across the landscape. Networks of protected areas within a larger mixed landscape can provide the highest level of resilience to climate change.”⁷ Similarly, the National Fish, Wildlife and Plants Climate Adaptation Partnership’s Adaptation Strategy (2012) calls for creating an ecologically-connected network of conservation areas.⁸

Roadless lands also are responsible for higher quality water and watersheds. Anderson et al. (2012) assessed the relationship of watershed condition and land management status and found a strong spatial association between watershed health and protective designations. Dellasalla et al. (2011) found that undeveloped and roadless watersheds are important for supplying downstream users with high-quality drinking water, and developing these watersheds comes at significant costs associated with declining water quality and availability. The authors recommend a light-touch ecological footprint to sustain the many values that derive from roadless areas including healthy watersheds.

⁶ Forest Service, 2011. *National Roadmap for Responding to Climate Change*. US Department of Agriculture. FS-957b. Page 26.

⁷ National Park Service. *Climate Change Response Program Brief*. <http://www.nature.nps.gov/climatechange/adaptationplanning.cfm>. Also see: National Park Service, 2010. *Climate Change Response Strategy*. http://www.nature.nps.gov/climatechange/docs/NPS_CCRS.pdf. Objective 6.3 is to “Collaborate to develop cross-jurisdictional conservation plans to protect and restore connectivity and other landscape-scale components of resilience.”

⁸ See <http://www.wildlifeadaptationstrategy.gov/pdf/NFWPCAS-Chapter-3.pdf>. Pages 55- 59. The first goal and related strategies are:

Goal 1: Conserve habitat to support healthy fish, wildlife, and plant populations and ecosystem functions in a changing climate.

Strategy 1.1: identify areas for an ecologically-connected network of terrestrial, freshwater, coastal, and marine conservation areas that are likely to be resilient to climate change and to support a broad range of fish, wildlife, and plants under changed conditions.

Strategy 1.2: Secure appropriate conservation status on areas identified in Strategy 1.1 to complete an ecologically-connected network of public and private conservation areas that will be resilient to climate change and support a broad range of species under changed conditions.

Strategy 1.4: Conserve, restore, and as appropriate and practicable, establish new ecological connections among conservation areas to facilitate fish, wildlife, and plant migration, range shifts, and other transitions caused by climate change.

III. Sustainable Transportation Management in National Forests as Part of Ecological Restoration

At 375,000 miles strong, the Forest Service road system is one of the largest in the world – it is eight times the size of the National Highway System. It is also indisputably unsustainable – that is, roads are not designed, located, or maintained according to best management practices, and environmental impacts are not minimized. It is largely recognized that forest roads, especially unpaved ones, are a primary source of sediment pollution to surface waters (Endicott 2008, Gucinski et al. 2000), and that the system has about 1/3rd more miles than it needs (USDA Forest Service 2001). In addition, the majority of the roads were constructed decades ago when road design and management techniques did not meet current standards (Gucinski et al. 2000, Endicott 2008), making them more vulnerable to erosion and decay than if they had been designed today. Road densities in national forests often exceed accepted thresholds for wildlife.

Only a small portion of the road system is regularly used. All but 18% of the road system is inaccessible to passenger vehicles. Fifty-five percent of the roads are accessible only by high clearance vehicles and 27% are closed. The 18% that is accessible to cars is used for about 80% of the trips made within National Forests.⁹ Most of the road maintenance funding is directed to the passenger car roads, while the remaining roads suffer from neglect. As a result, the Forest Service currently has a \$3.7 billion road maintenance backlog that grows every year. In other words, only about 1/5th of the roads in the national forest system are used most of the time, and the fraction that is used often is the best designed and maintained because they are higher level access roads. The remaining roads sit generally unneeded and under-maintained – arguably a growing ecological and fiscal liability.

Current Forest Service management direction is to identify and implement a sustainable transportation system.¹⁰ The challenge for forest managers is figuring out what is a sustainable road system and how to achieve it – a challenge that is exacerbated by climate change. It is reasonable to define a sustainable transportation system as one where all the routes are constructed, located, and maintained with best management practices, and social and environmental impacts are minimized. This, of course, is easier said than done, since the reality is that even the best roads and trail networks can be problematic simply because they exist and usher in land uses that without the access would not occur (Trombulak and Frissell 2000, Carnefix and Frissell 2009, USDA Forest Service 1996b), and when they are not maintained to the designed level they result in environmental problems (Endicott 2008; Gucinski et al. 2000). Moreover, what was sustainable may no longer be sustainable under climate change since roads designed to meet older climate criteria may no longer hold up under new climate scenarios (USDA Forest Service 2010, USDA Forest Service 2011b, USDA Forest Service 2012a, AASHTO 2012).

Forest Service efforts to move toward a more sustainable transportation system

The Forest Service has made efforts to make its transportation system more sustainable, but still has considerable work to do. In 2001, the Forest Service tried to address the issue by

⁹ USDA Forest Service. Road Management Website Q&As. Available online at http://www.fs.fed.us/eng/road_mgt/qanda.shtml.

¹⁰ See Forest Service directive memo dated March 29, 2012 entitled “Travel Management, Implementation of 36 CFR, Part 202, Subpart A (36 CFR 212.5(b))”

promulgating the Roads Rule¹¹ with the purpose of working toward a sustainable road system (USDA 2001). The Rule directed every national forest to identify a minimum necessary road system and identify unneeded roads for decommissioning. To do this, the Forest Service developed the Roads Analysis Process (RAP), and published Gucinski et al. (2000) to provide the scientific foundation to complement the RAP. In describing the RAP, Gucinski et al. (2000) writes:

“Roads Analysis is intended to be an integrated, ecological, social, and economic approach to transportation planning. It uses a multiscale approach to ensure that the identified issues are examined in context. Roads Analysis is to be based on science. Analysts are expected to locate, correctly interpret, and use relevant existing scientific literature in the analysis, disclose any assumptions made during the analysis, and reveal the limitations of the information on which the analysis is based. The analysis methods and the report are to be subjected to critical technical review” (p. 10).

Most national forests have completed RAPs, although most only looked at passenger vehicle roads which account for less than 20% of the system’s miles. The Forest Service Washington Office in 2010 directed that forests complete a Travel Analysis Process (TAP) by the end of fiscal year 2015, which must address all roads and create a map and list of roads identifying which are likely needed and which are not. Completed TAPs will provide a blueprint for future road decommissioning and management, they will not constitute compliance with the Roads Rule, which clearly requires the identification of the minimum roads system and roads for decommissioning. Almost all forests have yet to comply with subpart A.

The Forest Service in 2005 then tried to address the off-road portion of this issue by promulgating subpart B of the Travel Management Rule,¹² with the purpose of curbing the most serious impacts associated with off-road vehicle use. Without a doubt, securing summer-time travel management plans was an important step to curbing the worst damage. However, much work remains to be done to approach sustainability, especially since many national forests used the travel management planning process to simply freeze the footprint of motorized routes, and did not try to re-design the system to make it more ecologically or socially sustainable. Adams and McCool (2009) considered this question of how to achieve sustainable motorized recreation and concluded that:

As the agencies move to revise [off-road vehicle] allocations, they need to clearly define how they intend to locate routes so as to minimize impacts to natural resources and other recreationists in accordance with Executive Order 11644....¹³

¹¹ 36 CFR 215 subpart A

¹² 36 CFR 212 subpart B

¹³ Recent court decisions have made it clear that the minimization requirements in the Executive Orders are not discretionary and that the Executive Orders are enforceable. See

- *Idaho Conservation League v. Guzman*, 766 F. Supp. 2d 1056 (D. Idaho 2011) (Salmon-Challis National Forest TMP).
- *The Wilderness Society v. U.S. Forest Service*, CV 08-363 (D. Idaho 2012) (Sawtooth-Minidoka district National Forest TMP).
- *Central Sierra Environmental Resource Center v. US Forest Service*, CV 10-2172 (E.D. CA 2012) (Stanislaus National Forest TMP).

...As they proceed with designation, the FS and BLM need to acknowledge that current allocations are the product of agency failure to act, not design. Ideally, ORV routes would be allocated as if the map were currently empty of ORV routes. Reliance on the current baseline will encourage inefficient allocations that likely disproportionately impact natural resources and non-motorized recreationists. While acknowledging existing use, the agencies need to do their best to imagine the best possible arrangement of ORV routes, rather than simply tinkering around the edges of the current allocations.¹⁴

The Forest Service only now is contemplating addressing the winter portion of the issue, forced by a lawsuit challenging the Forest Service's inadequate management of snowmobiles. The agency is expected to issue a third rule in the fall of 2014 that will trigger winter travel management planning.

Strategies for identifying a minimum road system and prioritizing restoration

Transportation Management plays an integral role in the restoration of Forestlands. Reclaiming and obliterating roads is key to developing a sustainable transportation system. Numerous authors have suggested removing roads 1) to restore water quality and aquatic habitats (Gucinski et al. 2000), and 2) to improve habitat security and restore terrestrial habitat (e.g., USDI USFWS 1993, Hebblewhite et al. 2009).

Creating a minimum road system through road removal will increase connectivity and decrease fragmentation across the entire forest system. However, at a landscape scale, certain roads and road segments pose greater risks to terrestrial and aquatic integrity than others. Hence, restoration strategies must focus on identifying and removing/mitigating the higher risk roads. Additionally, areas with the highest ecological values, such as being adjacent to a roadless area, may also be prioritized for restoration efforts. Several methods have been developed to help prioritize road reclamation efforts including GIS-based tools and best management practices (BMPs). It is our hope that even with limited resources, restoration efforts can be prioritized and a more sustainable transportation system created.

GIS-based tools

Girvetz and Shilling (2003) developed a novel and inexpensive way to analyze environmental impacts from road systems using the Ecosystem Management Decision Support program (EMDS). EMDS was originally developed by the United States Forest Service, as a GIS-based decision support tool to conduct ecological analysis and planning (Reynolds 1999). Working in conjunction with Tahoe National Forest managers, Girvetz and Shilling (2003) used spatial data on a number of aquatic and terrestrial variables and modeled the impact of the forest's road network. The network analysis showed that out of 8233 km of road analyzed, only 3483 km (42%) was needed to ensure current and future access to key points. They found that the modified network had improved patch characteristics, such as significantly fewer "cherry stem" roads intruding into patches, and larger roadlessness.

Shilling et al. (2012) later developed a recreational route optimization model using a similar methodology and with the goal of identifying a sustainable motorized transportation system for the Tahoe National Forest (Figure 2). Again using a variety of environmental factors, the model identified routes with high recreational benefits, lower conflict, lower maintenance and

¹⁴ Page 105.

management requirements, and lower potential for environmental impact operating under the presumption that such routes would be more sustainable and preferable in the long term. The authors combined the impact and benefit analyses into a recreation system analysis “that was effectively a cost-benefit accounting, consistent with requirements of both the federal Travel Management Rule (TMR) and the National Environmental Policy Act” (p. 392).

The Wilderness Society in 2012 also developed a GIS decision support tool called “RoadRight” that identifies high risk road segments to a variety of forest resources including water, wildlife, and roadlessness (The Wilderness Society 2012, The Wilderness Society 2013). The GIS system is designed to provide information that will help forest planners identify and minimize road related environmental risks. See the summary of and user guide for RoadRight that provides more information including where to access the open source software.

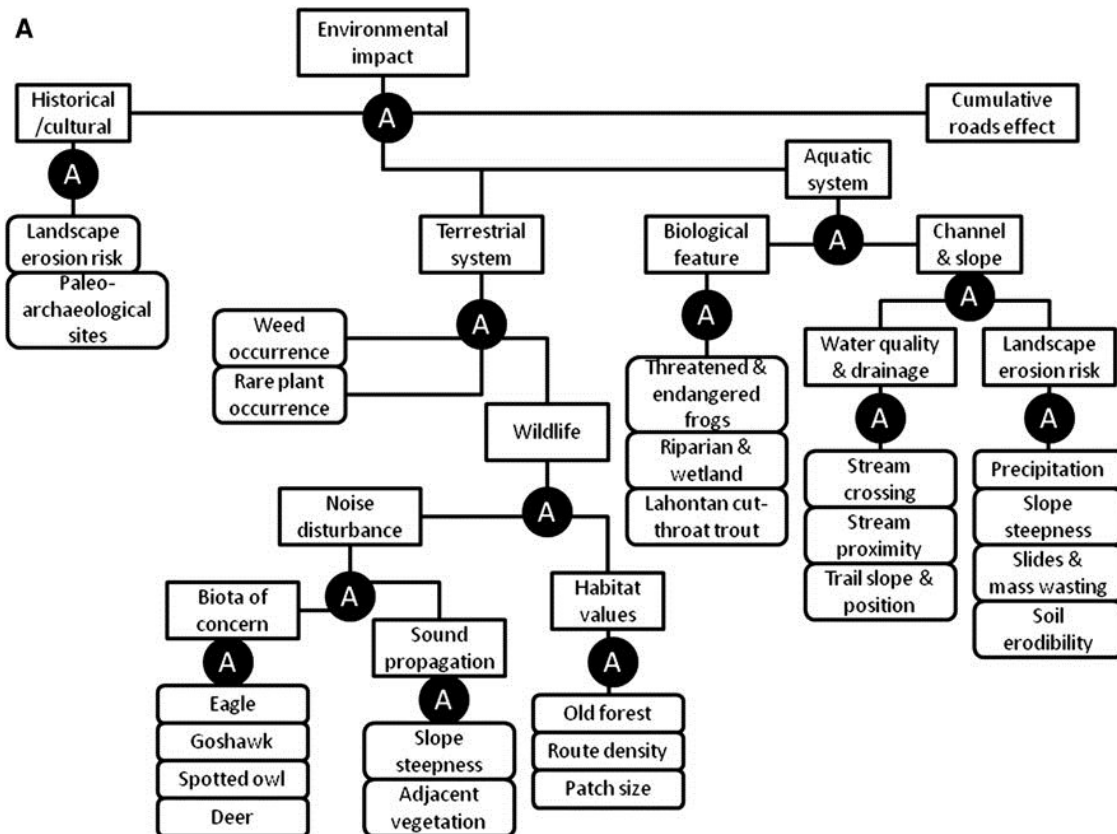


Figure 2: A knowledge base of contributions of various environmental conditions to the concept “environmental impact” [of motorized trails]. Rectangles indicate concepts, circles indicate Boolean logic operators, and rounded rectangles indicate sources of environmental data. (Reprinted from Shilling et al. 2012)

Best management practices (BMPs)

BMPs have also been developed to help create more sustainable transportation systems and identify restoration opportunities. BMPs provide science-based criteria and standards that land managers follow in making and implementing decisions about human uses and projects that affect natural resources. Several states have developed BMPs for road construction, maintenance and decommissioning practices (e.g., Logan 2001, Merrill and Cassaday 2003, USDA Forest Service 2012b).

Recently, BMPs have been developed for addressing motorized recreation. Switalski and Jones (2012) published, *“Off-Road Vehicle Best Management Practices for Forestlands: A Review of Scientific Literature and Guidance for Managers.”* This document reviews the current literature on the environmental and social impacts of off-road vehicles (ORVs), and establishes a set of Best Management Practices (BMPs) for the planning and management of ORV routes on forestlands. The BMPs were designed to be used by land managers on all forestlands, and is consistent with current forest management policy and regulations. They give guidance to transportation planners on where how to place ORV routes in areas where they will reduce use conflicts and cause as little harm to the environment as possible. These BMPs also help guide managers on how to best remove and restore routes that are redundant or where there is an unacceptable environmental or social cost.

References

- AASHTO. 2012. Adapting Infrastructure to Extreme Weather Events: Best Practices and Key Challenges. Background Paper. AASHTO Workshop. Traverse City, Michigan, May 20, 2012. Available at: http://climatechange.transportation.org/pdf/adapt_background5-20-12.pdf.
- Adams, J.C., and S.F. McCool. 2009. Finite recreation opportunities: The Forest Service, the Bureau of Land Management, and off-road vehicle management. *Natural Areas Journal* 49: 45–116.
- Anderson, H.M., C. Gaolach, J. Thomson, and G. Aplet. 2012. Watershed Health in Wilderness, Roadless, and Roaded Areas of the National Forest System. Wilderness Society Report. 11 p.
- Barton, D.C., A.L. Holmes. 2007. Off-highway vehicle trail impacts on breeding songbirds in northeastern California. *The Journal of Wildlife Management* 71(5):1817-1620.
- Battin J., M.W. Wiley, M.H. Ruckelshaus, R.N. Palmer, E. Korb, K.K. Bartz, and H. Imaki. 2007. Projected impacts of climate change on salmon habitat restoration. *Proceedings of the National Academy of Sciences of the United States of America* 104: 6720–6725.
- Baxter, C.V., C.A. Frissell, and F.R. Hauer. 1999. Geomorphology, logging roads, and the distribution of bull trout spawning in a forested river basin: implications for management and conservation. *Transactions of the American Fisheries Society* 128: 854–867.
- Baxter, G. 2002. All terrain vehicles as a cause of fire ignition in Alberta forests. *Advantage* (Publication of the Forest Engineering Research Institute of Canada) 3(44): 1-7.
- Beazley, K., T. Snaith, F. MacKinnon, and D. Colville. 2004. Road density and the potential impacts on wildlife species such as American moose in mainland Nova Scotia. *Proceedings of the Nova Scotia Institute of Science* 42: 339-357.
- Belnap, J. 2003. The world at your feet: desert biological soil crusts. *Frontiers in Ecology and the Environment* 1(5):181-189.
- Benítez-López, A., R. Alkemade, and P.A. Verweij. 2010. The impacts of roads and other infrastructure on mammal and bird populations: a meta-analysis. *Biological Conservation* 143: 1307-1316.
- Beyer, H.L., R. Ung, D.L. Murray, and M.J. Fortin. 2013. Functional responses, seasonal variation and thresholds in behavioural responses of moose to road density. *Journal of Applied Ecology* 50: 286–294.
- Brehme, C.S., and J.A. Tracey, L.R. McClenaghan, and R.N. Fisher. 2013. Permeability of roads to movement of scrubland lizards and small mammals. *Conservation Biology* 27(4): 710–720.
- Bowles, A.E. 1997. Responses of wildlife to noise. In *Wildlife and recreationists: coexistence through management and research*. Edited by R.L. Knight and K.J. Gutzwiller. Island Press, Washington, DC. p. 109–156.

- Brody, A.J., and M.R. Pelton. 1989. Effects of roads on black bear movements in western North Carolina. *Wildlife Society Bulletin* 17: 5-10.
- Call, M. 1979. Habitat management guides for birds of prey. Bureau of Land Management, Technical Note 338, Denver 70 p. Available at:
<https://archive.org/download/habitatmanagemen00call/habitatmanagemen00call.pdf>
- Carnefix, G., and C. A. Frissell. 2009. Aquatic and Other Environmental Impacts of Roads: The Case for Road Density as Indicator of Human Disturbance and Road-Density Reduction as Restoration Target; A Concise Review. Pacific Rivers Council Science Publication 09-001. Pacific Rivers Council, Portland, OR and Polson, MT. Available at:
<http://www.pacificrivers.org/science-research/resources-publications/road-density-as-indicator/download>
- Coffin, A. 2006. From roadkill to road ecology: A review of the ecological effects of roads. *Journal of Transport Geography* 15: 396-406.
- Crist, M.R., and B. Wilmer. 2002. Roadless Areas: The Missing Link in Conservation. The Wilderness Society, Washington D.C.
- Davenport, J., and T.A. Switalski. 2006. Environmental impacts of transport related to tourism and leisure activities. In: *The ecology of transportation: managing mobility for the environment*, editors: J Davenport and Julia Davenport. Dordrecht, Netherlands: Kluwer Academic Publishers. 333-360. Available at:
http://www.wildlandscpr.org/files/uploads/PDFs/d_Switalski_2006_Enviro_impacts_of_transport.pdf
- DellaSala, D., J. Karr, and D. Olson. 2011. Roadless areas and clean water. *Journal of Soil and Water Conservation*, vol. 66, no. 3. May/June 2011.
- DeVelice, R., and J.R. Martin. 2001. Assessing the extent to which roadless areas complement the conservation of biological diversity. *Ecological Applications* 11(4): 1008-1018.
- Endicott, D. 2008. National Level Assessment of Water Quality Impairments Related to Forest Roads and Their Prevention by Best Management Practices. A Report Prepared by the Great Lakes Environmental Center for the Environmental Protection Agency, Office of Water, December 4, 2008. 259 pp.
- Edge, W.D., and C.L. Marcum. 1985. Movements of elk in relation to logging disturbances. *Journal of Wildlife Management* 49(4): 926-930.
- Fahrig, L., and T. Rytwinski. 2009. Effects of roads on animal abundance: an empirical review and synthesis. *Ecology and Society* 14(1): 21.
Available at: <http://www.ecologyandsociety.org/vol14/iss1/art21/>.
- Foltz, R.B. N.S. Copeland, and W.J. Elliot. 2009. Reopening abandoned forest roads in northern Idaho, USA: Quantification of runoff, sediment concentration, infiltration, and interrill erosion parameters. *Journal of Environmental Management* 90: 2542-2550.

- Forman, R. T. T., and A.M. Hersperger. 1996. Road ecology and road density in different landscapes, with international planning and mitigation solutions. Pages 1–22. IN: G. L. Evink, P. Garrett, D. Zeigler, and J. Berry (eds.), Trends in Addressing Transportation Related Wildlife Mortality. No. FLER- 58-96, Florida Department of Transportation, Tallahassee, Florida.
- Foreman, R.T.T., D. Sperling, J.A. Bissonette et al. 2003. Road Ecology – Science and Solutions. Island Press. Washington, D.C. 504 p.
- Furniss, M.J., T.D. Roelofs, and C.S. Yee. 1991. Road construction and maintenance. In: Meehan, W.R., ed. Influences of forest and rangeland management on salmonid fishes and their habitats. Spec. Publ. 19. Bethesda, MD: American Fisheries Society. p. 297-323.
- Gaines, W.L., P. Singleton, and R.C. Ross. 2003. Assessing the cumulative effects of linear recreation routes on wildlife habitats on the Okanogan and Wenatchee National Forests. Gen. Tech. Rep. PNW-GTR-586. Portland, OR: U.S. Department of Agriculture, Forest Service, Pacific Northwest Research Station. 79 p. Available at: <http://www.montanawildlife.com/projectsissues/Assessingthecumulativeeffectsoflinearrecreationroutesonwildlifehabitats.pdf>
- Gelbard, J.L., and S. Harrison. 2003. Roadless habitats as refuges for native grasslands: interactions with soil, aspect, and grazing. Ecological Applications 13(2): 404-415.
- Girvetz, E., and F. Shilling. 2003. Decision Support for Road System Analysis and Modification on the Tahoe National Forest. Environmental Management 32(2): 218–233
- Grant, A., C.R. Nelson, T.A. Switalski, and S.M. Rinehart. 2011. Restoration of native plant communities after road decommissioning in the Rocky Mountains: effect of seed mix composition & soil properties on vegetative establishment. Restoration Ecology 19: 160-169.
- Gucinski, M., J. Furniss, R. Ziemer, and M.H. Brookes. 2000. Forest Roads: A Synthesis of Scientific Information. Gen. Tech. Rep. PNWGTR-509. Portland, OR: U.S. Department of Agriculture, Forest Service, Pacific Northwest Research Station. 103 p. Available at: <http://www.fs.fed.us/pnw/pubs/gtr509.pdf>.
- Hamann, B., H. Johnston, P. McClelland, S. Johnson, L. Kelly, and J. Gobielle. 1999. Birds. In: G. Joslin, and H. Youmans (ed), Effects of Recreation on Rocky Mountain Wildlife: A Review for Montana Committee on Effects of Recreation on Wildlife, Montana Chapter of the Wildlife Society. P. 3.1-3.3.
- Hargis, C.D., J.A. Bissonette, and D.T. Turner. 1999. The influence of forest fragmentation and landscape pattern on American martens. Journal of Applied Ecology 36(1): 157–172.
- Hebblewhite, M., R.H. Munro, E.H Merrill. 2009. Trophic consequences of postfire logging in a wolf-ungulate system. Forest Ecology and Management 257(3): 1053-1062.

- Holman, I.P., R.J. Nicholls, P.M. Berry, P.A. Harrison, E. Audsley, S. Shackley, and M.D.A. Rounsevell. 2005. A regional, multi-sectoral and integrated assessment of the impacts of climate and socio-economic change in the UK. Part II. Results. *Climatic Change* 71: 43-73.
- Jalkotzy, M.G., P.I. Ross, and M.D. Nasserden. 1997. The effects of linear developments on wildlife: a review of selected scientific literature. Prepared for Canadian Association of Petroleum Producers. Arc Wildlife Services, Ltd., Calgary, AB. 115 p.
- Jensen W.F., T.K. Fuller, and W.L. Robinson. 1986. Wolf (*Canis lupus*) distribution on the Onterio-Michigan border near Sault Ste. Marie. *Canadian Field-Naturalist* 100: 363-366.
- Jones, S. 1979. The accipiters: goshawk, Cooper's hawk, sharp-shinned hawk. Habitat Management Series for Unique or Endangered Species Report Number 17. Technical Note 335, USDI Bureau of Land Management, 55 p.
- Joslin, G., and H. Youmans, coordinators. 1999. Effects of recreation on Rocky Mountain wildlife: A Review for Montana. Committee on Effects of Recreation on Wildlife, Montana Chapter of The Wildlife Society. 307 p. Available at: <http://joomla.wildlife.org/Montana/index>
- Kasworm, W.F., and T.L. Manley. 1990. Road and trail influences on grizzly bears and black bears in northwest Montana. *International Conference on Bear Research and Management* 8: 79-84.
- Kerkvliet, J., J. Hicks, and B. Wilmer. 2008. Carbon Sequestered when Unneeded National Forest Roads are Revegetated. The Wilderness Society Briefing Memo. Available at: http://wilderness.org/sites/default/files/legacy/brief_carbonandroads.pdf.
- Lee, D., J. Sedell, B.E. Rieman, R. Thurow, and J. Williams. 1997. Broad-scale assessment of aquatic species and habitats. In: An assessment of ecosystem components in the interior Columbia basin and portions of the Klamath and Great Basins. Edited by T.M. Quigley and S.J. Arbelbide. General Technical Report PNW-GTR-405. USDA Forest Service, Pacific Northwest Research Station, Portland, OR. Vol III. p. 183-196.
- Lloyd, R., K. Lohse, and T.P.A. Ferre. 2013. Influence of road reclamation techniques on forest ecosystem recovery. *Frontiers in Ecology and the Environment* 11(2): 75-81.
- Loucks, C., N. Brown, A. Loucks, and K. 2003. USDA Forest Service roadless areas: potential biodiversity conservation reserves. *Conservation Ecology* 7(2): 5. Available at: <http://www.ecologyandsociety.org/vol7/iss2/art5/>
- Logan, R. 2001. Water Quality BMPs for Montana Forests. Montana Department of Environmental Quality. Missoula, MT. 60p. Available at: <https://dnrc.mt.gov/Forestry/Assistance/Practices/Documents/2001WaterQualityBMPGuide.pdf>
- Lyon, L.J. 1983. Road density models describing habitat effectiveness for elk. *Journal of Forestry* 81: 592-595.

- Madej, M., J. Seney, and P. van Mantgem. 2013. Effects of road decommissioning on carbon stocks, losses, and emissions in north coastal California. *Restoration Ecology* 21(4): 439–446.
- McCaffery M., T.A. Switalski, and L. Eby. 2007. Effects of road decommissioning on stream habitat characteristics in the South Fork Flathead River, Montana. *Transactions of the American Fisheries Society* 136: 553-561.
- McGurk, B.J., and D.R. Fong, 1995. Equivalent roaded area as a measure of cumulative effect of logging. *Environmental Management* 19: 609-621.
- Mech, L D. 1989. Wolf population survival in an area of high road density. *American Midland Naturalist* 121: 387-389.
- Mech, L. D., S.H. Fritts, G.L. Radde, and W.J. Paul. 1988. Wolf distribution and road density in Minnesota. *Wildlife Society Bulletin* 16: 85-87.
- Merrill, B.R., and E. Cassaday. 2003. Best Management Practices for Road Rehabilitation – Road – Stream Crossing Manual. California State Parks. Eureka, CA. 25p. Available at: http://www.parks.ca.gov/pages/23071/files/streamcrossingremovalbmp5_03.pdf
- Mladenoff, D.J., T.A. Sickley, R.G. Haight, and A.P. Wydeven. 1995. A regional landscape analysis and prediction of favorable gray wolf habitat in the Northern Great Lakes region. *Conservation Biology* 9: 279-294.
- Munger J.C., B.R. Barnett, S.J. Novak, A.A. Ames. 2003. Impacts of off-highway motorized vehicle trails on the reptiles and vegetation of the Owyhee Front. Idaho Bureau of Land Management Technical Bulletin 03-3:1-23.
- Moore, T. 2007. [unpublished draft]. National Forest System Road Trends, Trends Analysis Submitted to Office of Management and Budget. United States Department of Agriculture, Forest Service, Engineering Staff, Washington Office, Washington, DC.
- National Fish, Wildlife and Plants Climate Adaptation Partnership (NFWPCAP). 2012. National Fish, Wildlife and Plants Climate Adaptation Strategy. Association of Fish and Wildlife Agencies, Council on environmental Quality, Great Lakes Indian Fish and Wildlife Commission, National Oceanic and Atmospheric Administration, and U.S. Fish and Wildlife Service. Washington, DC.
- Noss, R.F. 2001. Beyond Kyoto: forest management in a time of rapid climate change. *Conservation Biology* 15(3): 578-590.
- Ortega, Y.K., and D.E. Capen. 2002. Roads as edges: effects on birds in forested landscapes. *Forest Science* 48(2): 381–396.
- Ouren, D.S., C. Haas, C.P. Melcher, S.C. Stewart, P.D. Ponds, N.R. Sexton, L. Burris, T. Fancher, and Z.H. Bowen. 2007. Environmental effects of off-highway vehicles on Bureau of Land Management lands: A literature synthesis, annotated bibliographies, extensive

bibliographies, and internet resources: U.S. Geological Survey, Open-File Report 2007-1353, 225 p.

Parmesan, C. 2006. Ecological and evolutionary responses to recent climate change. *Annual Review of Ecology, Evolution, and Systematics* 37: 637-669.

Quigley, T.M., and S.J. Arbelbide, tech. eds. 1997. An assessment of ecosystem components in the interior Columbia basin and portions of the Klamath and Great Basins: volume 1 and volume 3. Gen. Tech. Rep. PNW-GTR-405. Portland, OR: U.S. Department of Agriculture, Forest Service, Pacific Northwest Research Station.
Available at: http://www.fs.fed.us/pnw/publications/pnw_gtr405/.

Reynolds, K. 1999. Netweaver for EMDS user guide (version1.1); a knowledge base development system. General technical Report PNW-GTR-471. USDA Forest Service, Pacific Northwest Research Station, Portland, OR.

Rhodes, J.J., McCullough, D.A., and F.A. Espinosa. 1994. A coarse screening process for evaluation of the effects of land management activities on salmon spawning and rearing habitat in ESA consultations. Tech. Rep. 94-4. Portland, OR: Columbia River Intertribal Fish Commission. 127 p.

Richardson, C.T., and C.K. Miller. 1997. Recommendations for protecting raptors from human disturbance: a review. *Wildlife Society Bulletin* 25: 634-638.

Rieman, B., D. Lee, G. Chandler, and D. Myers. 1997. Does wildfire threaten extinction for salmonids? Responses of Redband Trout and Bull Trout Following Recent Large Fires on the Boise National Forest, in Greenlee, J. M., Proceedings: First Conference on Fire Effects on Rare and Endangered Species and Habitats. Coeur d'Alene, Idaho. International Association of Wildland Fire. Fairfield, WA. p. 47-57.

Robichaud, P.R., L.H. MacDonald, and R.B. Foltz. 2010. Fuel management and Erosion. In: Cumulative Watershed Effects of Fuels Management in the Western United States. USDA Forest Service RMRS-GTR-231. P. 79-100. Available at:
http://www.fs.fed.us/rm/pubs/rmrs_gtr231/rmrs_gtr231_079_100.pdf

Robinson, C., P.N. Duinker, and K.F. Beazley. 2010. A conceptual framework for understanding, assessing, and mitigation effects for forest roads. *Environmental Review* 18: 61-86.

Rooney, T.P. 2006. Distribution of ecologically-invasive plants along off-road vehicle trails in the Chequamegon National Forest, Wisconsin. *The Michigan Botanist* 44:178-182

Rost, G.R., and J.A. Bailey. 1979. Distribution of mule deer and elk in relation to roads. *Journal of Wildlife Management* 43(3): 634-641.

Rowland, M.M., M.J. Wisdom, B.K. Johnson, and M.A. Penninger. 2005. Effects of roads on elk: implications for management in forested ecosystems. Pages 42-52. IN: Wisdom, M.J., technical editor, The Starkey Project: a Synthesis of Long-term Studies of Elk and Mule Deer.

Reprinted from the 2004 Transactions of the North American Wildlife and Natural Resources Conference, Alliance Communications Group, Lawrence, KS.

- Schiffman, L. 2005. Archaeology, Off-Road Vehicles, and the BLM. Published online April 20, 2005. Archeaology.
Available at: <http://www.archaeology.org/online/features/southwest/>
- Semlitsch, R.D., T.J. Ryan, K. Hamed, M. Chatfield, B. Brehman, N. Pekarek, M. Spath, and A. Watland. 2007. Salamander abundance along road edges and within abandoned logging roads in Appalachian forests. *Conservation Biology* 21: 159-167.
- Shilling, F., J. Boggs, and S. Reed. 2012. Recreational System Optimization to Reduce Conflict on Public Lands. *Environmental Management* 50: 381–395.
- Strittholt, J., and D. Dellasala. 2001. Importance of Roadless Area Conservation in Forested Ecosystems: Case Study of the Klamath-Siskiyou Region of the United States. In *Conservation Biology* 15(6): 1742-1754.
- Switalski, T.A., J.A. Bissonette, T.H. DeLuca, C.H. Luce, and M.A. Madej. 2004. Benefits and impacts of road removal. *Frontiers in Ecology and the Environment*. 2(1): 21-28.
Available at: http://www.fs.fed.us/rm/pubs_other/rmrs_2004_switalski_t001.pdf
- Switalski, A., and A. Jones, editors. 2008. Best Management Practices for Off-Road Vehicle Use on Forestlands: a Guide for Designating & Managing Off-Road Vehicle Routes. *Wildlands CPR and the Wild Utah Project*. Missoula, MT. 51 p.
- Switalski, T.A., and C.R. Nelson. 2011. Efficacy of road removal for restoring wildlife habitat: black bear in the Northern Rocky Mountains, USA. *Biological Conservation* 144: 2666-2673.
- Switalski, T.A., and A. Jones. 2012. Off-road vehicle best management practices for forestlands: A review of scientific literature and guidance for managers. *Journal of Conservation Planning* 8: 12-24.
- The Wilderness Society. 2004. Landscape Connectivity: An Essential Element of Land Management. Policy Brief. Number 1.
- The Wilderness Society. 2012. Rightsizing the National Forest Road System: A Decision Support Tool. Available at:
<http://www.landscapecollaborative.org/download/attachments/12747016/Road+decommissioning+model+-overview+2012-02-29.pdf?version=1&modificationDate=1331595972330>.
- The Wilderness Society. 2013. RoadRight: A Spatial Decision Support System to Prioritize Decommissioning and Repairing Roads in National Forests User Guide. RoadRight version: 2.2, User Guide version: February, 2013.
Available at:
<http://www.landscapecollaborative.org/download/attachments/18415665/RoadRight%20User%20Guide%20v2.2.pdf?api=v2>

- Thiel, R.P. 1985. The relationships between road densities and wolf habitat in Wisconsin. *American Midland Naturalist* 113: 404-407.
- Trombulak S., and C. Frissell. 2000. Review of Ecological Effects of Roads on Terrestrial and Aquatic Communities. *Conservation Biology* 14(1): 18-30.
- USDA Forest Service. 1996a. National Forest Fire Report, 1994. Washington DC.
- USDA Forest Service. 1996b. Status of the interior Columbia basin: summary of scientific findings. Gen. Tech. Rep. PNW-GTR-385. Portland, OR: U.S. Department of Agriculture, Forest Service, Pacific Northwest Research Station; U.S. Department of the Interior, Bureau of Land Management. 144 p.
- USDA Forest Service. 1998. 1991-1997 Wildland Fire Statistics. Fire and Aviation Management, Washington, D.C.
- USDA Forest Service. 1999. Roads Analysis: Informing Decisions about Managing the National Forest Transportation System. Misc. Rep. FS-643. Washington, D.C.: USDA Forest Service. 222 p. Available at: http://www.fs.fed.us/eng/road_mgt/DOCSroad-analysis.shtml
- USDA Forest Service. 2001a. Final National Forest System Road Management Strategy Environmental Assessment and Civil Rights Impact Analysis. U.S. Department of Agriculture Forest Service Washington Office, January 2001.
- USDA Forest Service. 2010. Water, Climate Change, and Forests: Watershed Stewardship for a Changing Climate, PNW-GTR-812, June 2010, 72 p. Available at: http://www.fs.fed.us/pnw/pubs/pnw_gtr812.pdf.
- USDA Forest Service. 2011a. Adapting to Climate Change at Olympic National Forest and Olympic National Park. Forest Service Pacific Northwest Research Station General Technical Report, PNW-GTR-844, August 2011. Available at: http://www.fs.fed.us/pnw/pubs/pnw_gtr844.pdf
- USDA Forest Service. 2011b. National Roadmap for Responding to Climate Change. US Department of Agriculture. FS-957b. 26 p. Available at: http://www.fs.fed.us/climatechange/pdf/Roadmap_pub.pdf.
- USDA Forest Service. 2012a. Assessing the Vulnerability of Watersheds to Climate Change: Results of National Forest Watershed Vulnerability Pilot Assessments. Climate Change Resource Center.
- USDA Forest Service. 2012b. National Best Management Practices for Water Quality Management on National Forest System Lands. Report# FS-990. 177p. Available at: http://www.fs.fed.us/biology/resources/pubs/watershed/FS_National_Core_BMPs_April2012.pdf
- USDI Fish and Wildlife Service. 1993. Grizzly bear recovery plan. Missoula, MT. 181p.

- USDI Fish and Wildlife Service. 1995. Recovery Plan for the Mexican Spotted Owl (*Strix occidentalis lucida*). US Fish and Wildlife Service, Albuquerque, NM. Available at: http://warnercnr.colostate.edu/~alanf/reprints/mso_rec_plan.pdf
- USDI Fish and Wildlife Service. 1999. Endangered and Threatened Wildlife and Plants; Determination of Threatened Status for Bull Trout in the Coterminous United States; Final Rule. Federal Register Volume 64, Number 210 (Monday, November 1, 1999). p. 58922.
- USDI Fish and Wildlife Service. 2012. Mexican Wolf Recovery Program: Progress Report #15, U.S. Fish and Wildlife Service, Albuquerque, NM. 60 p.
- USDI Bureau of Land Management. 2000. Strategic paper on cultural resources at risk. Bureau of Land Management, Washington, D.C. 18 p.
- USDI National Park Service. 2010. Climate Change Response Strategy. National Park Service Climate Change Response Program, Fort Collins, Colorado.
Available at: http://www.nature.nps.gov/climatechange/docs/NPS_CCRS.pdf.
- van Dyke, F.G., R.H. Brocke, H.G. Shaw, B.B Ackerman, T.P. Hemker, and F.G. Lindzey. 1986. Reactions of mountain lions to logging and human activity. Journal of Wildlife Management. 50(1): 95–102.
- Wasser, S.K., K. Bevis, G. King, and E. Hanson. 1997. Noninvasive physiological measures of disturbance in the northern spotted owl. Conservation Biology 11(4): 1019–1022.
- Wemple, B.C., J.A. Jones, and G.E. Grant. 1996. Channel network extension by logging roads in two basins, western Cascades, OR. Water Resources Bulletin 32: 1195-1207.
- Wemple, B.C., F.J. Swanson, and J.A. Jones. 2001. Forest Roads and geomorphic process interactions, Cascade Range, Oregon. Earth Surface Process and Landforms 26: 191-204.
Available at: <http://andrewsforest.oregonstate.edu/pubs/pdf/pub2731.pdf>
- Whittington, D.M., and G.T. Allen. 2008. Guidelines for Raptor Conservation in the Western United States. U.S. Fish and Wildlife Service, Region 9. Division of Migratory Bird Management, Washington D.C. 142 p.
- Wilcove, D.S. 1990. The role of wilderness in protecting biodiversity. Natural Resources and Environmental Issues: Vol. 0, Article 7.
- Wisdom, M.J., R.S. Holthausen, B.C. Wales, C.D. Hargis, V.A. Saab, D.C. Lee, W.J. Hann, T.D. Rich, M.M. Rowland, W.J. Murphy, and M.R. Eames. 2000. Source habitats for terrestrial vertebrates of focus in the interior Columbia basin: Broad-scale trends and management implications. Volume 1 – Overview. Gen. Tech. Rep. PNW-GTR-485. Portland, OR: U.S. Department of Agriculture, Forest Service, Pacific Northwest Research Station.
- Wydeven, A.P, D.J. Mladenoff, T.A. Sickley, B.E. Kohn, R.P. Thiel, and J.L. Hansen. 2001. Road density as a factor in habitat selection by wolves and other carnivores in the Great Lakes Region. Endangered Species Update 18(4): 110-114.

Attachments

Attachment 1: Wildfire and Roads Fact Sheet

Attachment 2: Using Road Density as a Metric for Ecological Health in National Forests: What Roads and Routes should be Included? Summary of Scientific Information

Attachment 3: Wildlife Corridors in Northern New Mexico



Roads and Fire: A Proven Relationship



Photo: Lou Anegli Digital

Roaded Forests Are at a Greater Risk of Experiencing Wildfires than Unroaded Forests

- A wildland fire ignition is almost twice as likely to occur in a roaded area than in a roadless area. (USDA 2000, Table 3-18)
- The location of large wildfires is often correlated with proximity to busy roads. (Sierra Nevada Ecosystem Project, 1996)
- High road density increases the probability of fire occurrence due to human-caused ignitions. (Hann, W.J., et al. 1997)
- Unroaded areas have lower potential for high-intensity fires than roaded areas because they are less prone to human-caused ignitions. (DellaSala, et al. 1995)
- The median size of large fires on national forests is greater outside of roadless areas. (USDA 2000, Table 3-22)
- A positive correlation exists between lightning fire frequency and road density due to increased availability of flammable fine fuels near roads. (Arienti, M. Cecilia, et al. 2009)
- Human caused wildfires are strongly associated with access to natural landscapes, with the proximity to urban areas and roads being the most important factor (Romero-Calcerrada, et al. 2008)

For more information, contact Gregory H. Aplet, Ph.D., Senior Forest Scientist, at greg_aplet@twc.org or 303-650-5818 x104.

HUMAN ACTIVITY AND WILDFIRE

- Sparks from cars, off-road vehicles, and neglected campfires caused nearly 50,000 wildfire ignitions in 2000. (USDA 2000, Fuel Management and Fire Suppression Specialist Report, Table 4.)
- More than 90% of fires on national lands are caused by humans (USDA 1996 and 1998)
- Human-ignited wildfire is almost 5 times more likely to occur in a roaded area than in a roadless area (USDA 2000, Table 3-19).

There are 375,000 miles of roads in our national forests.



1615 M St. N.W.
Washington, D.C. 20036

(202) 833-2300

wilderness.org



Roads and Fire: A Proven Relationship



Photo: USDA Forest Service, Coconino National Forest

References

Arienti, M. Cecilia; Cumming, Steven G., et al. 2009. Road network density correlated with increased lightning fire incidence in the Canadian western boreal forest. *International Journal of Wildland Fire* 2009, 18, 970–982

DellaSala, D.A., D.M. Olson and S.L. Crane. 1995. Ecosystem management and biodiversity conservation: Applications to inland Pacific Northwest forests. Pp. 139-160 in: R.L. Everett and D.M. Baumgartner, eds. *Symposium Proceedings: Ecosystem Management in Western Interior Forests*. May 3-5, 1994, Spokane, WA. Washington State University Cooperative Extension, Pullman, WA.

Hann, W.J., et al. 1997. An Assessment of Ecosystem Components in the Interior Columbia Basin and Portions of the Klamath and Great Basins: Volume II, Ch. 3, p. 882

Romer-Calcerrada, Raul. 2008. GIS analysis of spatial patterns of human-caused wildfire ignition risk in the SW of Madrid (Central Spain). *Landscape Ecol.* 23:341-354.

Sierra Nevada Ecosystem Project. 1996. Status of the Sierra Nevada: Sierra Nevada Ecosystem Project, Final Report to Congress Volume I: Assessment summaries and management strategies. Wildland Resources Center Report No. 37. Center for Water and Wildland Resources, University of California, Davis, CA.

USDA Forest Service. 1996. National Forest Fire Report 1994. Washington, D.C.

USDA Forest Service. 1998. 1991-1997 Wildland fire statistics. Fire and Aviation Management, Washington, D.C.

USDA. 2000. Forest Service Roadless Area Conservation Rule Final Environmental Impact Statement, Ch. 3,.



1615 M St. N.W.
Washington, D.C. 20036

(202) 833-2300

wilderness.org



**Attachment 2: Using Road Density as a Metric for Ecological Health in National Forests:
What Roads and Routes should be Included?
Summary of Scientific Information
Last Updated, November 22, 2012**

I. Density analysis should include closed roads, non-system roads administered by other jurisdictions (private, county, state), temporary roads and motorized trails.

Typically, the Forest Service has calculated road density by looking only at open system road density. From an ecological standpoint, this approach may be flawed since it leaves out of the density calculations a significant percent of the total motorized routes on the landscape. For instance, the motorized route system in the entire National Forest System measures well over 549,000 miles.¹ By our calculation, a density analysis limited to open system roads would consider less than 260,000 miles of road, which accounts for less than half of the entire motorized transportation system estimated to exist on our national forests.² These additional roads and motorized trails impact fish, wildlife, and water quality, just as open system roads do. In this section, we provide justification for why a road density analysis used for the purposes of assessing ecological health and the effects of proposed alternatives in a planning document should include closed system roads, non-system roads administered by other jurisdictions, temporary roads, and motorized trails.

Impacts of closed roads

It is crucial to distinguish the density of roads physically present on the landscape, whether closed to vehicle use or not, from “open-road density” (Pacific Rivers Council, 2010). An open-road density of 1.5 mi/mi² has been established as a standard in some national forests as protective of some terrestrial wildlife species. However, many areas with an open road density of 1.5 mi/mi² have a much higher inventoried or extant hydrologically effective road density, which may be several-fold as high with significant aquatic impacts. This higher density occurs because many road “closures” block vehicle access, but do nothing to mitigate the hydrologic alterations that the road causes. The problem is

¹ The National Forest System has about 372,000 miles of system roads. The forest service also has an estimated 47,000 miles of motorized trails. As of 1998, there were approximately 130,000 miles of non-system roads in our forests. Non-system roads include public roads such as state, county, and local jurisdiction and private roads. (USFS, 1998) The Forest Service does not track temporary roads but is reasonable to assume that there are likely several thousand miles located on National Forest System lands.

² About 30% of system roads, or 116,108 miles, are in Maintenance Level 1 status, meaning they are closed to all motorized use. (372,000 miles of NFS roads - 116,108 miles of ML 1 roads = 255,892). This number is likely conservative given that thousands of more miles of system roads are closed to public motorized use but categorized in other Maintenance Levels.

further compounded in many places by the existence of “ghost” roads that are not captured in agency inventories, but that are nevertheless physically present and causing hydrologic alteration (Pacific Watershed Associates, 2005).

Closing a road to public motorized use can mitigate the impacts on water, wildlife, and soils only if proper closure and storage technique is followed. Flow diversions, sediment runoff, and illegal incursions will continue unabated if necessary measures are not taken. The Forest Service’s National Best Management Practices for non-point source pollution recommends the following management techniques for minimizing the aquatic impacts from closed system roads: eliminate flow diversion onto the road surface, reshape the channel and streambanks at the crossing-site to pass expected flows without scouring or ponding, maintain continuation of channel dimensions and longitudinal profile through the crossing site, and remove culverts, fill material, and other structures that present a risk of failure or diversion. Despite good intentions, it is unlikely given our current fiscal situation and past history that the Forest Service is able to apply best management practices to all stored roads,³ and that these roads continue to have impacts. This reality argues for assuming that roads closed to the public continue to have some level of impact on water quality, and therefore, should be included in road density calculations.

As noted above, many species benefit when roads are closed to public use. However, the fact remains that closed system roads are often breached resulting in impacts to wildlife. Research shows that a significant portion of off-road vehicle (ORV) users violates rules even when they know what they are (Lewis, M.S., and R. Paige, 2006; Frueh, LM, 2001; Fischer, A.L., et. al, 2002; USFWS, 2007.). For instance, the Rio Grande National Forest’s Roads Analysis Report notes that a common travel management violation occurs when people drive around road closures on Level 1 roads (USDA Forest Service, 1994). Similarly, in a recent legal decision from the Utah District Court , *Sierra Club v. USFS*, Case No. 1:09-cv-131 CW (D. Utah March 7, 2012), the court found that, as part of analyzing alternatives in a proposed travel management plan, the Forest Service failed to take a hard look at the impact of continued illegal use. In part, the court based its decision on the Forest Service’s acknowledgement that illegal motorized use is a significant problem and that the mere presence of roads is likely to result in illegal use.

In addition to the disturbance to wildlife from ORVs, incursions and the accompanying human access can also result in illegal hunting and trapping of animals. The Tongass National Forest refers to this in its EIS to amend the Land and Resources Management Plan. Specifically, the Forest Service notes in the EIS that Alexander Archipelego wolf mortality due to legal and illegal hunting and trapping is related not only to roads open to motorized access, but to all roads, and that *total road densities* of 0.7-1.0 mi/mi² or less may be necessary (USDA Forest Service, 2008).

As described below, a number of scientific studies have found that ORV use on roads and trails can have serious impacts on water, soil and wildlife resources. It should be expected that ORV use will continue to

³ The Forest Service generally reports that it can maintain 20-30% of its open road system to standard.

some degree to occur illegally on closed routes and that this use will affect forest resources. Given this, roads closed to the general public should be considered in the density analysis.

Impacts of non-system roads administered by other jurisdictions (private, county, state)

As of 1998, there were approximately 130,000 miles of non-system roads in national forests (USDA Forest Service, 1998). These roads contribute to the environmental impacts of the transportation system on forest resources, just as forest system roads do. Because the purpose of a road density analysis is to measure the impacts of roads at a landscape level, the Forest Service should include all roads, including non-system, when measuring impacts on water and wildlife. An all-inclusive analysis will provide a more accurate representation of the environmental impacts of the road network within the analysis area.

Impacts of temporary roads

Temporary roads are not considered system roads. Most often they are constructed in conjunction with timber sales. Temporary roads have the same types environmental impacts as system roads, although at times the impacts can be worse if the road persists on the landscape because they are not built to last.

It is important to note that although they are termed temporary roads, their impacts are not temporary. According to Forest Service Manual (FSM) 7703.1, the agency is required to "Reestablish vegetative cover on any unnecessary roadway or area disturbed by road construction on National Forest System lands within 10 years after the termination of the activity that required its use and construction." Regardless of the FSM 10-year rule, temporary roads can remain for much longer. For example, timber sales typically last 3-5 years or more. If a temporary road is built in the first year of a six year timber sale, its intended use does not end until the sale is complete. The timber contract often requires the purchaser to close and obliterate the road a few years after the Forest Service completes revegetation work. The temporary road, therefore, could remain open 8-9 years before the ten year clock starts ticking per the FSM. Therefore, temporary roads can legally remain on the ground for up to 20 years or more, yet they are constructed with less environmental safeguards than modern system roads.

Impacts of motorized trails

Scientific research and agency publications generally do not decipher between the impacts from motorized trails and roads, often collapsing the assessment of impacts from unmanaged ORV use with those of the designated system of roads and trails. The following section summarizes potential impacts resulting from roads and motorized trails and the ORV use that occurs on them.

Aquatic Resources

While driving on roads has long been identified as a major contributor to stream sedimentation (for review, see Gucinski, 2001), recent studies have identified ORV routes as a significant cause of stream sedimentation as well (Sack and da Luz, 2004; Chin et al.; 2004, Ayala et al.; 2005, Welsh et al.; 2006). It

has been demonstrated that sediment loss increases with increased ORV traffic (Foltz, 2006). A study by Sack and da Luz (2004) found that ORV use resulted in a loss of more than 200 pounds of soil off of every 100 feet of trail each year. Another study (Welsh et al., 2006) found that ORV trails produced five times more sediment than unpaved roads. Chin et al. (2004) found that watersheds with ORV use as opposed to those without exhibited higher percentages of channel sands and fines, lower depths, and lower volume – all characteristics of degraded stream habitat.

*Soil Resources*⁴

Ouren, et al. (2007), in an extensive literature review, suggests ORV use causes soil compaction and accelerated erosion rates, and may cause compaction with very few passes. Weighing several hundred pounds, ORVs can compress and compact soil (Nakata et al., 1976; Snyder et al., 1976; Vollmer et al., 1976; Wilshire and Nakata, 1976), reducing its ability to absorb and retain water (Dregne, 1983), and decreasing soil fertility by harming the microscopic organisms that would otherwise break down the soil and produce nutrients important for plant growth (Wilshire et al., 1977). An increase in compaction decreases soil permeability, resulting in increased flow of water across the ground and reduced absorption of water into the soil. This increase in surface flow concentrates water and increases erosion of soils (Wilshire, 1980; Webb, 1983; Misak et al., 2002).

Erosion of soil is accelerated in ORV-use areas directly by the vehicles, and indirectly by increased runoff of precipitation and the creation of conditions favorable to wind erosion (Wilshire, 1980). Knobby and cup-shaped protrusions from ORV tires that aid the vehicles in traversing steep slopes are responsible for major direct erosional losses of soil. As the tire protrusions dig into the soil, forces far exceeding the strength of the soil are exerted to allow the vehicles to climb slopes. The result is that the soil and small plants are thrown downslope in a “rooster tail” behind the vehicle. This is known as mechanical erosion, which on steep slopes (about 15° or more) with soft soils may erode as much as 40 tons/mi (Wilshire, 1992). The rates of erosion measured on ORV trails on moderate slopes exceed natural rates by factors of 10 to 20 (Iverson et al., 1981; Hinckley et al., 1983), whereas use on steep slopes has commonly removed the entire soil mantle exposing bedrock. Measured erosional losses in high use ORV areas range from 1.4-242 lbs/ft² (Wilshire et al., 1978) and 102-614 lbs/ft² (Webb et al., 1978). A more recent study by Sack and da Luz (2003) found that ORV use resulted in a loss of more than 200 lbs of soil off of every 100 feet of trail each year.

Furthermore, the destruction of cryptobiotic soils by ORVs can reduce nitrogen fixation by cyanobacteria, and set the nitrogen economy of nitrogen-limited arid ecosystems back decades. Even small reductions in crust can lead to diminished productivity and health of the associated plant community, with cascading effects on plant consumers (Davidson et al., 1996). In general, the deleterious effects of ORV use on cryptobiotic crusts is not easily repaired or regenerated. The recovery time for the lichen component of crusts has been estimated at about 45 years (Belnap, 1993). After this time the crusts may appear to have regenerated to the untrained eye. However, careful observation will

⁴ For a full review see Switalski, T. A. and A. Jones (2012).

reveal that the 45 year-old crusts will not have recovered their moss component, which will take an additional 200 years to fully come back (Belnap and Gillette, 1997).

*Wildlife Resources*⁵

Studies have shown a variety of possible wildlife disturbance vectors from ORVs. While these impacts are difficult to measure, repeated harassment of wildlife can result in increased energy expenditure and reduced reproduction. Noise and disturbance from ORVs can result in a range of impacts including increased stress (Nash et al., 1970; Millspaugh et al., 2001), loss of hearing (Brattstrom and Bondello, 1979), altered movement patterns (e.g., Wisdom et al. 2004; Preisler et al. 2006), avoidance of high-use areas or routes (Janis and Clark 2002; Wisdom 2007), and disrupted nesting activities (e.g., Strauss 1990).

Wisdom et al. (2004) found that elk moved when ORVs passed within 2,000 yards but tolerated hikers within 500 ft. Wisdom (2007) reported preliminary results suggesting that ORVs are causing a shift in the spatial distribution of elk that could increase energy expenditures and decrease foraging opportunities for the herd. Elk have been found to readily avoid and be displaced from roaded areas (Irwin and Peek, 1979; Hershey and Legee, 1982; Millspaugh, 1995). Additional concomitant effects can occur, such as major declines in survival of elk calves due to repeated displacement of elk during the calving season (Phillips, 1998). Alternatively, closing or decommissioning roads has been found to decrease elk disturbance (Millspaugh et al., 2000; Rowland et al., 2005).

Disruption of breeding and nesting birds is particularly well-documented. Several species are sensitive to human disturbance with the potential disruption of courtship activities, over-exposure of eggs or young birds to weather, and premature fledging of juveniles (Hamann et al., 1999). Repeated disturbance can eventually lead to nest abandonment. These short-term disturbances can lead to long-term bird community changes (Anderson et al., 1990). However when road densities decrease, there is an observable benefit. For example, on the Loa Ranger District of the Fishlake National Forest in southern Utah, successful goshawk nests occur in areas where the localized road density is at or below 2-3 mi/mi² (USDA, 2005).

Examples of Forest Service planning documents that use total motorized route density or a variant

Below, we offer examples of where total motorized route density or a variant has been used by the Forest Service in planning documents.

- The Mt. Taylor RD of the Cibola NF analyzed open and closed system roads and motorized trails together in a single motorized *route* density analysis. Cibola NF: Mt. Taylor RD Environmental Assessment for Travel Management Planning, Ch.3, p 55.
http://prdp2fs.ess.usda.gov/Internet/FSE_DOCUMENTS/stelprdb5282504.pdf.

⁵ For a full review see: Switalski, T. A. and A. Jones (2012).

- The Grizzly Bear Record of Decision (ROD) for the Forest Plan Amendments for Motorized Access Management within the Selkirk and Cabinet-Yaak Grizzly Bear Recovery Zones (Kootenai, Lolo, and Idaho Panhandle National Forests) assigned route densities for the designated recovery zones. One of the three densities was for Total Motorized Route Density (TMRD) which includes open roads, restricted roads, roads not meeting all reclaimed criteria, and open motorized trails. The agency's decision to use TMRD was based on the Endangered Species Act's requirement to use best available science, and monitoring showed that both open and closed roads and motorized trails were impacting grizzly. Grizzly Bear Plan Amendment ROD. Online at cache.ecosystem-management.org/48536_FSPLT1_009720.pdf.
- The Chequamegon-Nicolet National Forest set forest-wide goals in its forest plan for both open road density and total road density to improve water quality and wildlife habitat.

I decided to continue reducing the amount of total roads and the amount of open road to resolve conflict with quieter forms of recreation, impacts on streams, and effects on some wildlife species. ROD, p 13.

Chequamegon-Nicolet National Forest Land and Resource Management Plan Record of Decision. Online at http://www.fs.usda.gov/Internet/FSE_DOCUMENTS/stelprdb5117609.pdf.

- The Tongass National Forest's EIS to amend the forest plan notes that Alexander Archipelago wolf mortality due to legal and illegal hunting and trapping is related not only to roads open to motorized access, but to all roads, and that *total road densities* of 0.7-1.0 mi/mi² or less may be necessary.

Another concern in some areas is the potentially unsustainable level of hunting and trapping of wolves, when both legal and illegal harvest is considered. The 1997 Forest Plan EIS acknowledged that open road access contributes to excessive mortality by facilitating access for hunters and trappers. Landscapes with open-road densities of 0.7 to 1.0 mile of road per square mile were identified as places where human-induced mortality may pose risks to wolf conservation. The amended Forest Plan requires participation in cooperative interagency monitoring and analysis to identify areas where wolf mortality is excessive, determine whether the mortality is unsustainable, and identify the probable causes of the excessive mortality.

More recent information indicates that wolf mortality is related not only to roads open to motorized access, but to all roads, because hunters and trappers use all roads to access wolf habitat, by vehicle or on foot. Consequently, this decision amends the pertinent standard and guideline contained in Alternative 6 as displayed in the Final EIS in areas where road access and associated human caused mortality has been determined to be the significant contributing factor to unsustainable wolf mortality. The standard and guideline has been modified to ensure that a range of options to reduce mortality risk will be considered in these areas, and to specify that total road densities of 0.7 to 1.0 mile per square mile or less may be necessary. ROD, p 24.

Tongass National Forest Amendment to the Land and Resource Management Plan Record of Decision and Final EIS. January 2008. http://tongass-fpadjust.net/Documents/Record_of_Decision.pdf

References

- Anderson, D.E., O.J. Rongstad, and W.R. Mytton. 1990. Home range changes in raptors exposed to increased human activity levels in southeastern Colorado. *Wildlife Bulletin* 18:134-142.
- Ayala, R.D., P. Srivastava, C.J. Brodbeck, E.A. Carter, and T.P. McDonald. 2005. Modeling Sediment Transport from an Off-Road Vehicle Trail Stream Crossing Using WEPP Model. American Society of Agricultural and Biological Engineers, 2005 ASAE Annual International Meeting, Paper No: 052017.
- Belnap, J. 1993. Recovery rates of cryptobiotic crusts: inoculant use and assessment methods. *Great Basin Naturalist* 53:89-95.
- Belnap, J. and D.A. Gillette. 1997. Disturbance of biological soil crusts: impacts on potential wind erodibility of sandy desert soils in SE Utah. *Land Degradation and Development* 8: 355-362.
- Brattstrom, B.H., and M.C. Bondello. 1979. The effects of dune buggy sounds on the telencephalic auditory evoke response in the Mojave fringe-toed lizard, *Uma scoparia*. Unpublished report to the U.S. Bureau of Land Management, California Desert Program, Riverside, CA. 31p.
- Chin, A., D.M. Rohrer, D.A. Marion, and J.A. Clingenpeel. 2004. Effects of all terrain vehicles on stream dynamics. Pages:292-296 in Guldin, J.M. technical compiler, Ovachita and Ozark Mountains Symposium: ecosystem management research. General technical report SRS-74. Ashville, NC: USDA, FS, Southern Research Station.
- Davidson, D.W, W.D. Newmark, J.W. Sites, D.K. Shiozawa, E.A. Rickart, K.T. Harper, and R.B. Keiter. 1996. Selecting Wilderness areas to conserve Utah's biological diversity. *Great Basin Naturalist* 56: 95-118.
- Dregne, H.E. 1983. Physical effects of off-road vehicle use. Pages 15-30 in R.H. Webb and H.G. Wilshire. *Environmental Effects of Off-Road Vehicles: Impacts and Management in Arid Regions*. Springer-Verlag, New York.
- Foltz, R.B. 2006. Erosion from all terrain vehicle (ATV) trails on National Forest lands. The American Society of Agricultural and Biological engineers (ASABE). Paper# 068012. St. Joseph, MI.
- Frueh, LM. 2001. Status and Summary Report on OHV Responsible Riding Campaign. Prepared by Monaghan and Associates for the Colorado Coalition for Responsible OHV Riding. Available at http://www.wildlandscpr.org/files/CO%20OHV%20Focus%20Group%20StatusSummaryReport_1.pdf.

The Wilderness Society et al. Scoping Letter 4/3/2015
Appendix H Attachment 2

Gucinski, H., M. J. Furniss, R. R. Ziemer, and M. H. Brookes. 2001. Forest roads: a synthesis of scientific information. Gen. Tech. Rep. PNWGTR-509. U.S. Department of Agriculture, Forest Service, Pacific Northwest Research Station, Portland, OR. <http://www.fs.fed.us/pnw/pubs/gtr509.pdf>

Hamann, B., H. Johnston, P. McClelland, S. Johnson, L. Kelly, and J. Gobielle. 1999. Birds. Pages 3.1-3.34 in Joslin, G. and H. Youmans, coordinators Effects of Recreation on Rocky Mountain Wildlife: A Review for Montana.

Hershey, T.J., and T.A. Leege. 1982. Elk movements and habitat use on a managed forest in north-central Idaho. Idaho Department of Fish and Game. 32p.

Hinckley, B.S., Iverson, R.M. and B. Hallet. 1983. Accelerated water erosion in ORV-use areas. Pages 81-96 in Webb, R.H. and H.G. Wilshire, editors, Environmental Effects of Off-Road Vehicles. Springer-Verlag, New York.

Irwin, L.L., and J.M. Peek. 1979. Relationship between road closure and elk behavior in northern Idaho. Pages 199-205 in Boyce, M.S. and L.D. Hayden-Wing, editors, North American Elk: Ecology, Behavior, and Management. Laramie, WY: University of Wyoming.

Iverson, R.M., Hinckley, B.S., and R.H. Webb. 1981. Physical effects of vehicular disturbance on arid landscapes. Science 212: 915-917.

Janis, M.W., and J.D. Clark. 2002. Responses of Florida panthers to recreational deer and hog hunting. Journal of Wildlife Management 66(3): 839-848.

Lewis, M.S., and R. Paige. 2006. Selected Results From a 2006 Survey of Registered Off-Highway Vehicle (OHV) Owners in Montana. Responsive Management Unit Research Summary No. 21. Prepared for Montana Fish, Wildlife and Parks. <http://fwp.mt.gov/content/getItem.aspx?id=19238>

Millspaugh, J.J. 1995. Seasonal movements, habitat use patterns and the effects of human disturbances on elk in Custer State Park, South Dakota. M.S. Thesis. Brookings, SD: South Dakota State University.

Millspaugh, J.J., G.C. Brundige, R.A. Gitzen, and K.J. Raedeke. 2000. Elk and hunter space-use sharing in South Dakota. Journal of Wildlife Management 64(4): 994-1003.

Millspaugh, J.J., Woods, R.J. and K.E. Hunt. 2001. Fecal glucocorticoid assays and the physiological stress response in elk. Wildlife Society Bulletin 29: 899-907.

Misak, R.F., J.M. Al Awadhi, S.A. Omar, and S.A. Shahid. 2002. Soil degradation in Kabad area, southwestern Kuwait City. Land Degradation & Development. 13(5): 403-415.

Nakata, J.K., H.G. Wilshire, and G.G. Barnes. 1976. Origin of Mojave Desert dust plumes photographed from space. *Geology* 4(11): 644-648.

Nash, R.F., G.G. Gallup, jr., and M.K. McClure. 1970. The immobility reaction in leopard frogs (*Rana pipiens*) as a function of noise induced fear. *Psychonomic Science* 21(3): 155-156.

Ouren, D.S., Haas, Christopher, Melcher, C.P., Stewart, S.C., Ponds, P.D., Sexton, N.R., Burris, Lucy, Fancher, Tammy, and Bowen, Z.H., 2007, Environmental effects of off-highway vehicles on Bureau of Land Management lands: A literature synthesis, annotated bibliographies, extensive bibliographies, and internet resources: U.S. Geological Survey, Open-File Report 2007-1353, 225 p.

Pacific Rivers Council. 2010. Roads and Rivers 2: An Assessment of National Forest Roads Analyses. Portland, OR <http://pacificrivers.org/science-research/resources-publications/roads-and-rivers-ii/download>

Pacific Watershed Associates. 2005. Erosion Assessment and Erosion Prevention Planning Project for Forest Roads in the Biscuit Fire Area, Southern Oregon. Prepared for Pacific Rivers Council and The Siskiyou Project. Pacific Watershed Associates, Arcata, California. <http://pacificrivers.org/files/post-fire-management-and-sound-science/Final%20Biscuit%20PWA%20Report.pdf>

Phillips, G.E. 1998. Effects of human-induced disturbance during calving season on reproductive success of elk in the upper Eagle River Valley. Dissertation. Fort Collins, CO: Colorado State University.

Preisler, H.K., A.A. Ager, and M.J. Wisdom. 2006. Statistical methods for analyzing responses of wildlife to human disturbance. *Journal of Applied Ecology* 43: 164-172.

Rowland, M.M., M.J. Wisdom, B.K. Johnson, and M.A. Penninger. 2005. Effects of roads on elk: implications for management in forested ecosystems. Pages 42-52. IN: Wisdom, M.J., technical editor, The Starkey Project: a Synthesis of Long-term Studies of Elk and Mule Deer. Reprinted from the 2004 Transactions of the North American Wildlife and Natural Resources Conference, Alliance Communications Group, Lawrence, KS.

Sack, D., and S. da Luz, Jr. 2003. Sediment Flux and Compaction Trends on Off-Road Vehicle (ORV) and other Trails in an Appalachian Forest Setting. *Physical Geography* 24 (6): 536-554.

Snyder, C.T., D.G. Frickel, R.E. Hadley, and R.F. Miller. 1976. Effects of off-road vehicle use on the hydrology and landscape of arid environments in central and southern California. U.S. Geological Survey Water-Resources Investigations Report #76-99. 45p.

Switalski, T. A. and A. Jones. 2012. Off-road Vehicle Best Management Practices for Forestlands: A Review of Scientific Literature and Guidance for Managers. *Journal of Conservation Planning*. Vol. 8 (2014). Pages 12 – 24.

The Wilderness Society et al. Scoping Letter 4/3/2015
Appendix H Attachment 2

USFWS, Nevada Fish and Wildlife Office. 2007. 12-Month Finding on a Petition to List the Sand Mountain Blue Butterfly (*Euphilotes pallescens* ssp. *arenamontana*) as Threatened or Endangered with Critical Habitat. Federal Register, Vol. 72, No. 84. See pages 24260-61. <http://www.wildlandscpr.org/denial-petition-list-sand-mountain-blue-butt...>

USDA Forest Service (USFS) 1994. Rio Grande National Forest Roads Analysis Process Report. See pages 76-77 and 118.

USDA Forest Service. (USFS) 1998. National Forest System Roads and Use. Available online at http://www.fs.fed.us/eng/road_mgt/roadsummary.pdf.

USDA Forest Service. (USFS) 2008. Tongass National Forest Amendment to the Land and Resource Management Plan Record of Decision and Final EIS. http://tongass-fpadjust.net/Documents/Record_of_Decision.pdf

Vollmer, A.T., B.G. Maza, P.A. Medica, F.B. Turner, and S.A. Bamberg. 1976. The impact of off-road vehicles on a desert ecosystem. *Environmental Management* 1(2):115-129.

Webb, R.H., Ragland, H.C., Godwin, W.H., and D. Jenkins. 1978. Environmental effects of soil property changes with off-road vehicle use. *Environmental Management* 2: 219-233.

Webb, R.H.. 1983. Compaction of desert soils by off-road vehicles. Pages 51-79 in: Webb, R.H. and Wilshire, H.G., editors, *Environmental Effects of Off-Road Vehicles*. Springer-Verlag, New York.

Welsh, M.J., L.H. MacDonald, and E. Brown, and Z. Libohova. 2006. Erosion and sediment delivery from unpaved roads and off-highway vehicles (OHV). Presented at AGU fall meeting. San Francisco, CA.

Wilshire, H.G., G.B. Bodman, D. Broberg, W.J. Kockelman, J. Major, H.E. Malde, C.T. Snyder, and R.C. Stebbins. 1977. Impacts and management of off-road vehicles. The Geological Society of America. Report of the Committee on Environment and Public Policy.

Wilshire, H.G., Nakata, J.K., Shipley, S., and K. Presteggaard. 1978. Impacts of vehicles on natural terrain at seven sites in the San Francisco Bay area. *Environmental Geology* 2: 295-319.

Wilshire, H.G. 1980. Human causes of accelerated wind erosion in California's deserts. Pages 415-433 in D.R. Coates and J.B. Vitek, editors, *Thresholds in Geomorphology*. George Allen & Unwin, Ltd., London.

Wilshire, H.G. 1992. The wheeled locusts. *Wild Earth* 2: 27-31.

Wisdom, M.J., R.S. Holthausen, B.C. Wales, C.D. Hargis, V.A. Saab, D.C. Lee, W.J. Hann, T.D. Rich, M.M. Rowland, W.J. Murphy, and M.R. Eames. 2000. Source habitats for terrestrial vertebrates of focus in the interior Columbia basin: Broad-scale trends and management implications. Volume 1 – Overview. Gen. Tech. Rep. PNW-GTR-485. Portland, OR: U.S. Department of Agriculture, Forest Service, Pacific Northwest Research Station. <http://www.fs.fed.us/pnw/pubs/gtr485/gtr485vl.pdf>

Wisdom, M.J., H.K. Preisler, N.J. Cimon, and B.K. Johnson. 2004. Effects of off-road recreation on mule deer and elk. Transactions of the North American Wildlife and Natural Resource Conference 69.

Wisdom, M.J. 2007. Shift in Spatial Distribution of Elk Away from Trails Used by All-Terrain Vehicles. Report 1, May 2007, USDA Forest Service, Pacific Northwest Research Station, La Grande, OR.

Wildlife Migration Corridors of Northern New Mexico

